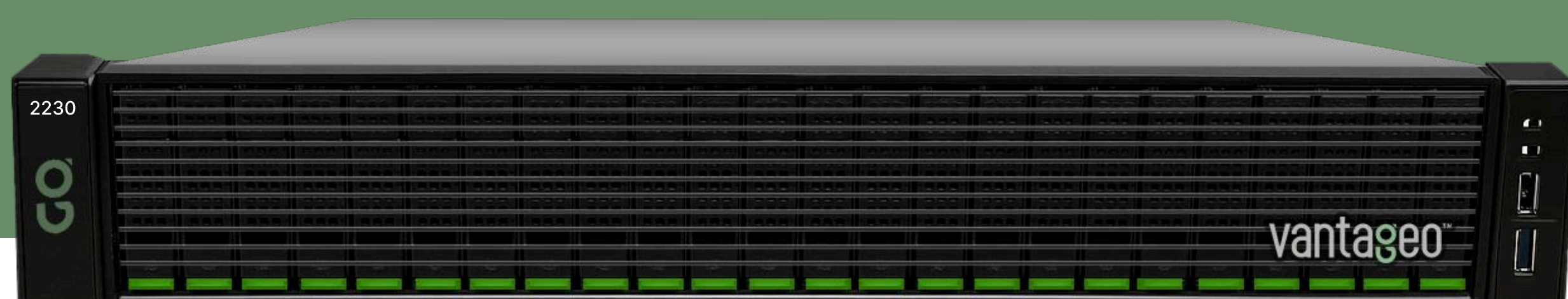


Vantageo 2230-RT

Flexible, Scalable, and Secure



Unleash Unmatched Performance with the Dual 3rd Generation Intel® Xeon® Scalable Processor Server

Overview

The Vantageo 2230-RT is a powerful and versatile rack server, multipurpose-built to deliver exceptional performance for challenging and emerging workloads. Its powered by dual 3rd Generation Intel® Xeon® Scalable processors, with up to 40 cores each, make it an ideal platform for accelerating application performance using accelerator cards and storage scalability. The server supports upto 16DDR4 ECC DIMM slots with a maximum capacity of 4TB. It also features embedded management capabilities that allow for easy hardware monitoring, boot from USB device, console redirection, and more. With its 2U form factor, the Vantageo 2230-RT strikes an optimal balance between resources, providing the ideal solution for the most demanding environments. Additionally, the server comes equipped with storage controllers and I/O ports making it a versatile solution for variety workloads.

- This means that the chassis can accommodate a variety of storage configurations, depending on the specific needs of the user. This provides plenty of storage options for businesses of all sizes.
- The server features a sleek bezel that enhances the appearance of the server while providing additional protection against dust and other contaminants.
- The server is designed to operate in a variety of environments. It has a recommended operating temperature range of 10°C to 35°C (50°F to 95°F) and a non-operating temperature range of -40°C to 70°C (-40°F to 158°F). It also has non-operating humidity of up to 90%, non-condensation at 35°C

Features

Scaling Innovation with Challenging and Emerging Workloads :-

The Vantageo 2230-RT chassis supports up to 24 or 16 of 2.5-inch SAS/SATA (HDD/SSD) drive bays up to 12/8 NVMe SSD drive bays or up to 12 or 8 of 3.5-inch SAS/SATA (HDD/SSD) drive bays.

Vantageo 2230-RT

- High bandwidth dual socket option optimized for virtualized environments
- 2 Slots PCI-E Gen 4x8 / 3 Slots PCI-E Gen4x16

Autonomous Collaboration For Enhancing Efficiency and Accelerating Operations:-

The Vantageo 2230-RT server features embedded management that allows for autonomous collaboration, enhancing efficiency, and accelerating operations. The server also supports FAN PWM duty cycle/SMBIOS 3.0/PnP/Wake on LAN/ACPI 6.1/ACPI sleeping states S4, S5, providing advanced power management capabilities.

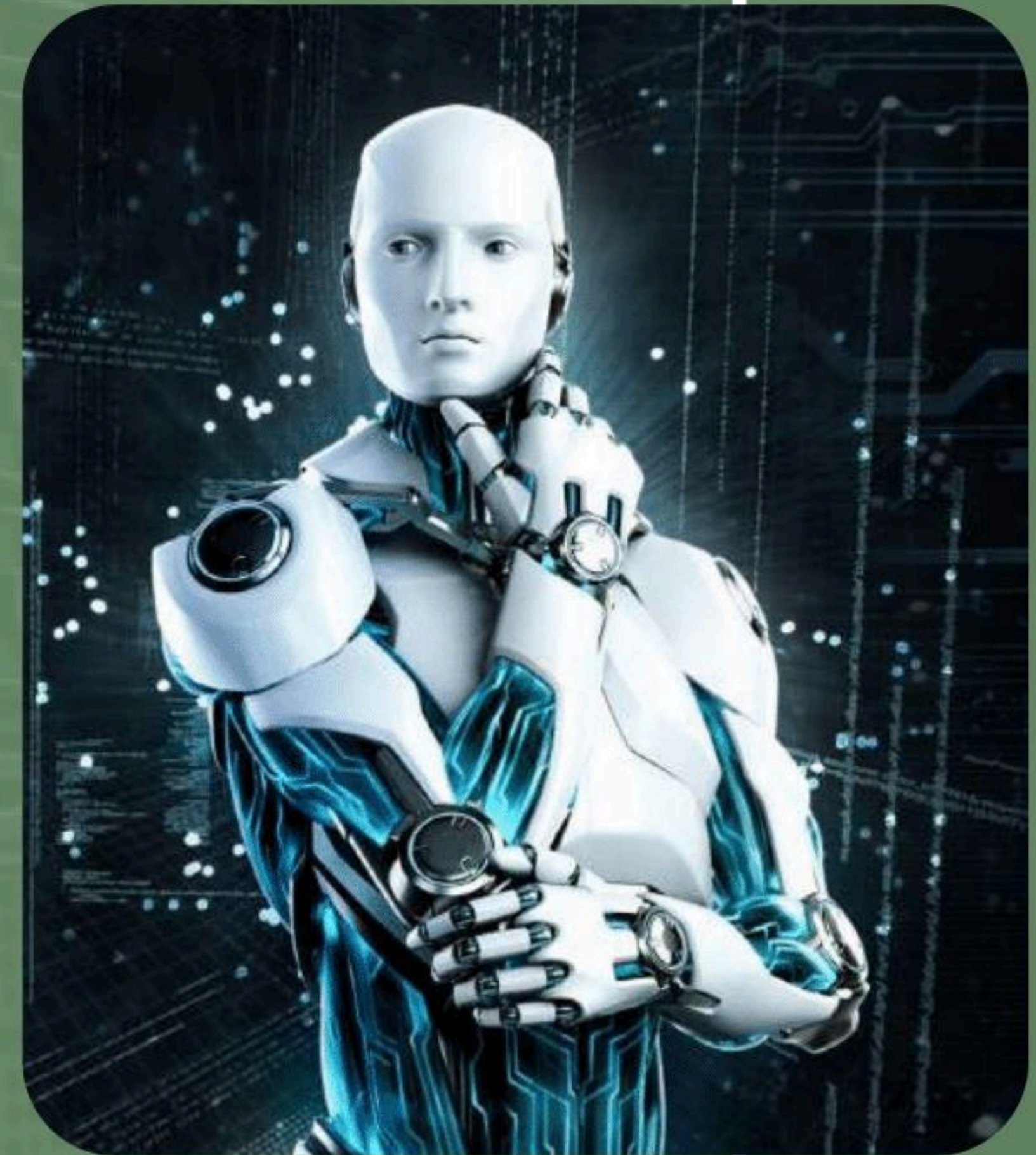
- The hardware monitor/ boot from USB device/ PXE via LAN/ storage/ console redirection/ user configurable features provide greater flexibility in managing and controlling the server.
- The server's FAN PWM duty cycle regulates the fan speed, minimizing power consumption and noise levels.
- The IPMI 2.0 compliant baseboard management controller (BMC) and 10 or 100 or 1000 Mb/s MAC interface further enhance remote management capabilities

Summary of Vantageo 2230-RT

The Vantageo 2230-RT server is a high-performance, versatile solution that can handle a wide range of workloads. With its extensive drive bay options, powerful processors, and ample memory capacity, it is well-suited for organizations that require large storage capacities and high-performance computing capabilities. Its embedded management capabilities also make it an efficient and easy-to-use solution for IT infrastructure management. Overall, the Vantageo 2230-RT server is an excellent choice for a reliable and high-performance server solution.

- The server is designed to provide maximum security for your data assets and infrastructure. It features Secure Boot, TPM 1.2/2.0 optional, and cryptographically signed firmware.
- The server is compatible with a variety of operating systems, including Red Hat® Enterprise Linux, SUSE® Linux Enterprise Server, Ubuntu® Server LTS, Microsoft Windows Server®, and VMware® ESXi.

- The Vantageo 2230-RT server enables high-performance computing for complex financial calculations and data analysis. With ample memory capacity and storage options, it efficiently stores and retrieves data. It best fit for BFSI application due to it's scalability, flexibly and performance.
- It is ideal for telecom workloads, since it offers high bandwidth, powerful processors, ample memory, and extensive drive bay options. Experience proactive resilience and efficient IT infrastructure management
- This makes Vantageo 2230-RT server an ideal choice for organizations that require efficient management for IT infrastructure.



Vantageo 2230-RT			
Features	Technical Specification		
Processor	Dual 3nd Generation Intel® Xeon® Scalable processors, up to 40 cores each		
Chip Set	Intel C621A		
Memory	16 DDR4 ECC DIMM slots, Supports RDIMM /RDIMM 3DS/LRDIMM/LRDMM 3DS, up to 3200MT/s, 4TB max		
Raid controller Options	Onboard Raid Support – Intel RSTe Supports Raid 0/1/10/5 PCIe Gen4/Gen3 SAS 3.0 (12Gbs)	Supported Cache – 2GB/4GB/8GB Supported Cache – 2GB/4GB/8GB	Supported Cache Protection Supported Raid Level – 0/1/5/6/10/50/60 Supported Media – SAS/SATA/NVMe
Drive bays	Front drive bays: Up to 24 x 2.5" SAS/SATA (HDD/SSD) up to 12/8 NVMe SSD Front drive bays: Up to 16 x 2.5" SAS/SATA (HDD/SSD) up to 12/8 NVMe SSD Front drive bays: Up to 12 x 3.5" SAS/SATA (HDD/SSD) Front drive bays: Up to 8 x 3.5" SAS/SATA (HDD/SSD) Rear 2 * 2.5" SAS/SATA(HDD/SSD)		
Storage NVMe	Connector(M.2) (2) 22110/2280 (by PCIe interface)		
Power supplies	Redundant CRPS 1+1, 800/1200/1600W(TITANIUM)	High Performance PWM Fan(s)	
Dimensions	Form factor: Rack (2U)	Height: 90mm Width: 490mm Length: 723mm (Max.) Weight: Max. 32 kg *Dimensions do not include bezel	
Embedded management	IPMI 2.0 compliant baseboard management controller (BMC)/10/100/1000 Mb/s MAC interface Hardware Monitor/Boot from USB device/PXE via LAN/Storage/Console Redirection/ User Configurable FAN PWM Duty Cycle/SMBIOS 3.0/PnP /Wake on LAN/ACPI 6.1/ACPI sleeping states S4,S5		
Security	TPM 1.2/2.0 optional Cryptographically signed firmware Secure Boot		
I/O & Ports	2x USB3.0 ports (rear) 1x D-Sub 15-pin VGA port (rear) 2x GbE ports + 1x GbE dedicated for IPMI (1) 2x12-pin SSI front panel header 3x Mini-SAS HD from PCH SATA-III	2x PCI-E Gen 4x8 / 3x PCI-E Gen4x16 NVMe-Connector (M.2) 2x 2210/2280 (by PCI-E interface)	
Supported operating systems	Microsoft Windows Server® VMware® ESXi Red Hat® Enterprise Linux SUSE® Linux Enterprise Server Ubuntu® Server LTS	For specifications and interoperability details, operability details, see Vantageo.com/OSsupport	
operating Environment	Operating Temp. 10° C~35° C (50° F~95° F) Non Operating Temp. -40° C~ 70° C (-40° F ~ 158° F)	In/Non Operating Humidity 90%, non-condensation 35° C)	
Recommended support	24x7 - 4 hours Response, Next Business Day Call to Resolution CTR 24x7 - 4 hours Response, 24 Hours Call to Resolution CTR 24x7 - 4 Hours Response, 6 Hours Call to Resolution CTR Default support Next Business Day Consulting and deployment offerings are also available. Contact Vantageo representative for the more information.		

Disclaimer: Technical data is subject to modification and delivery subject to availability. . Any liability that the data and illustrations are complete, actual or correct is excluded. Designations may be trademarks and/or copyrights of the respective manufacturer, the use of which by third parties for their own purposes may infringe the rights of such owner.