



# PHOBJIKHA VALLEY TOUR

OFF BEAT —  
BHUTAN

15-24 AUGUST 2025 | 12-21 SEPTEMBER 2025

FLAT 49,999/- PER PERSON 9N & 10D

## Day 1

- Arrival at Bagdogra airport and proceed to Phuentsholing Travel Time – 4 hrs
- Arrive in Phuentsholing and embark on the unforgettable experience
- of crossing the Indo-Bhutan border on foot.
- Check out your locality in Phuentsholing and try local cuisines or simply relax in the charismatic environment of Bhutan.
- Night stay at Phuentsholing – Amochu View Hotel/ Or Similar

## Day 2

- Phuentsholing to Thimphu (Transfer to Thimpu post immigration) Travel Time – 6 hrs
- Sightseeings on the way:
  - The eight boddhi stupa at Gedu.
  - Confluence point (Sangam) of the beautiful Pachhu and Wangchu.
- Night stay at Thimphu – Orovilla/ Or Similar

## Day 3

- Thimphu local sightseeing:
  - Buddha point – a huge statue of Buddha
  - Takins Preserve Area– Rare mountain animal called Takin (Bhutan National Animal), surrounded by dense forest.
  - The 13 Arts and craft School
  - Postal Museum – Print your personalized stamps here
  - Leisure time at Thimphu town.
- Overnight stay at Thimphu – Orovilla/ Or Similar

## Day 4

- Thimphu to Phobjikha valley Travel Time –3.5 hrs
- A break at Dochula pass (3000m) in between Thimphu and Punakha to check the breathtaking view of the eastern Himalayas
- A visit at Chimi Lhakhang (the fertility temple) to understand the devine story of Lama Drukpa Kuenley and the tradition of fertility.
- Night stay at Phobjekha – My home resort / Or Similar





Day 5

- Day tour in Phobjekha.
- A hike from Hotel – Visit the black crane centre crossing through– Bayta Village– Gangtey Monestry – Kumbu Village –then the roosting site of the heavenly bird– the black neck crane back to hotel. We carry out this hike with the pack lunch
- OR a Visit at Gangtey monastery, natural trail hike (1.5 hrs) and visit crane centre
- Night stay at Phobjekha – My home resort/ Or Similar



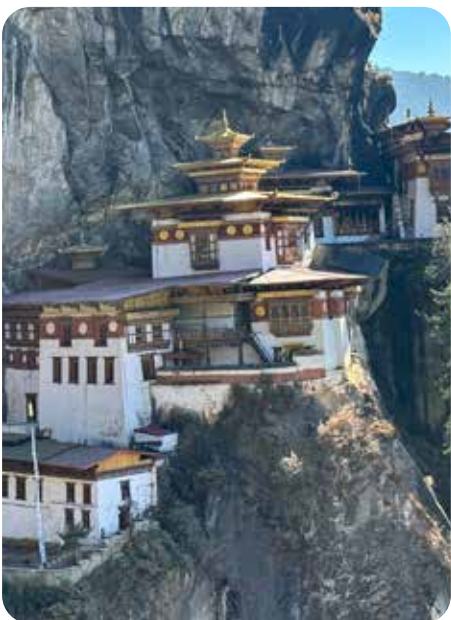
Day 6

- Phobjekha to Punakha Travel Time – 2 hrs
- Visit the majestic fort of Punakha (Punakha Dzong).
- Visit the longest suspension bridge, which is over the male river (Pochhu)
- Do the most popular river rafting (on self expense)
- Night stay at Punakha– Pema Karpo/ Or Similar



Day 7

- Punakha to Paro Travel Time – 3 hrs
- A visit at Chelela Pass, the highest motorable mountain pass that stands at an elevation of 3988m approx. the view from Chelela pass, Jomolhari(2nd highest), mt. Gangkar Phuensum(highest of Bhutan) and mt. Kanchanjunga(3rd highest in the world)
- Visit National Museum of Bhutan OR Leisure time at Paro town in the evening.
- Night stay at Paro– Drukchen Hotel/ Or Similar



Day 8

- The Great Tiger's nest hike – A day hike up to one of the sacred sites in the world, Tiger's nest temple
- Visit to the Farm house for a traditional hot stone bath in the evening.
- Night stay at Paro – Hotel Drukchen/ Or Similar



Day 9

- Paro to phuentsholing Travel Time – 5.5 hrs
- Hire Traditional dress for pictures and leisure time to shop souvenirs & local products.
- Visit Paro International airport view point– one of the most dangerous airports in the world.
- A short visit at Namgay Artisanal Brewery and then head for Phuentsholing.
- Night stay at Phuentsholing – Amochu hotel/ Or Similar



Day 10 21 Sept 2025

- Phuentsholing to Bagdora drop. Travel Time – 4 hrs
- After breakfast, one may start for airport and then to your destination.

འབྲུག་གི་ས་ཁོངས་ལྷན་ཁག་གི་ལྷན་ཁག་།



# INCLUSIONS

- 9 Nights accommodation in 3 star hotels on double sharing.
- Accomodations – 1 Night Phuentsholing, 2 Nights Thimpu, 3 Night Bumthang, 1 Night at Phobjikha, 2 Nights at Paro.
- Complimentary Breakfast (9) at accommodated hotels.
- Complimentary Dinner (8) at accommodated hotels in Thimpu, Bumthang, Phobjikha, Paro
- Your Tourist SIM Card will get a 100Rs talk time and 1 GB internet.
- Pickup & Drop from Bagdogra Airport (IXB) on SIC basis.
- All transfers and sightseeing as per Itinerary on SIC basis.
- Assistance for Tourist Permits to Travel to Thimphu, Paro, Phobjikha and Punakha.
- Driver allowances, toll tax, parking charges, state taxes.
- Licensed Bhutanese Trip Guide to assist throughout the trip.
- Sustainable Development Fee (SDF) Included.

# EXCLUSIONS

- Any Airfare or Train Fare.
- Dinner in Phuentsholing – Day 1
- Lunch, any extra meal/beverages not mentioned in the package.
- Entry fees for the monuments/ sites mentioned in the itinerary (Refer Expense List for the same)
- Additional sightseeing or extra usage of vehicle, other than mentioned in the itinerary or Optional Tours.
- Any activities, monuments entrance fee or transfers other than mentioned in the Itinerary.
- Any expenses caused by reasons beyond our control such as rescheduling or cancellations e.g. flights cancellations, any accidents, weather conditions, medical evacuations, riots, strikes etc. Such expenses will have to be paid directly.
- Travel Insurance.
- Any other expenses specifically not mentioned above.





## KEY TIPS TO ENSURE SMOOTH TRIP TO BHUTAN:

This is an exclusive itinerary crafted to experience the most authentic experience of Bhutan

Remember as a traveller we represent our home country and suggest embracing this opportunity to showcase it in positive aspects

## IMMIGRATION

Documents required

- Originals of Voter Card issued through Post Office.
- OR Passport (Validity of 6 months)

## CURRENCY IN BHUTAN

- Do not rely on the ATM at Phuentsholing please carry sufficient cash
- Indian currency is widely accepted in Bhutan, no need to exchange
- Make sure of carrying sufficient cash as credit cards are not yet widely accepted.
- Rs.2000 notes are not acceptable

## TIPPING

- Tipping in Bhutan is not mandatory but recommended for hotel staff, guides and drivers at the end of the tour

## NETWORK CONNECTIVITY

- Your Indian network will work until Phuentsholing, afterwards a tourist SIM card will be provided before leaving for Thimpu.
- Your Tourist SIM Card will get a 100Rs talk time and 1 GB internet.

## WEATHER

- We will be sharing instructions closer to the date. But you can check weather forecast to plan your clothes accordingly
- It's advisable to bring a mix of lightweight clothing for daytime and warmer layers for the evenings. A jacket can be handy.
- NOTE: Stay informed about weather changes; closer to your travel date for accurate forecasts as conditions may vary.
- Avoid wearing shorts during sightseeing, you can't go inside any temple or monasteries then. Please take off your hats and sunglasses while going inside any religious places.





# MEALS

- Breakfast and Buffet Dinner will be provided as per Chef's special of the day.
- In Bhutan, dinner is typically served around 7-9 PM since the majority of restaurants in the country close by that time.
- Lunch will be on your own expense to explore the local food during the travel. Remember this is an offbeat trip, in remote places we may not be able to get access to Indian food/ snacks. The idea is to explore and experience and respect the Bhutanese culture through their food.

# BHUTANESE CUISINE

- Ema Datshi, Kewa Datshi
- Red Rice
- Suja – Salty Butter Tea
- Ara – Traditional Fermented Alcohol
- Indian cuisine is generally available in Bhutan, whether roadside or at the hotel

# EXPENSE GUIDE

- Buddha Point – 500/- per person
- Black Neck Crane Centre – 150/- per person.
- Royal Heritage Museum – 500/- per person.
- Punakha Dzong – 500/- per person
- Fertility Temple – 500/- per person.
- Tiger's Nest Temple – 1000/- per person. (The trek to monastery is free of charge, entry tickets are only required those who want to visit inside the temple. Photography equipments are prohibited.)
- Hot Stone Bath – 2000/- per person.
- River Rafting – 2000/- per person.
- Takin's Preserve Area – 300/- per person
- National Bhutan Museum – 500/- per person



- The monastery is at 700m above the base camp.
- It's an easy to moderate hike.
- Cafeteria is available at the halfway point to rest and get a closer view of the monastery.
- Light layers to remove or put on as per convenience.
- A pair of shoes with solid grip is sufficient
- You can carry light snacks or energy bar since it's not available at the base.
- You can rent a walking pole from the base camp.
- Carry a small day bag and a water bottle.





# BASIC TRAVEL TIPS

- **Be on time**, during a group travel punctuality is crucial to ensure covering places and spend sufficient time at the places.
- Bhutan is 30 minutes ahead of India.
- Bhutan's power outlet's are similar to India.
- Co-ordinating with tour guide is crucial to ensure the best out of this trip
- Complimentary SIM Card will be provided post immigration.
- Smoking is not allowed in public places, it's allowed in private places.
- Refrain from passing negative comments on the culture or chief abbot of the country or royal family of Bhutan.
- Use Zebra Crossing while crossing the roads, otherwise police might trouble you.
- Respect other cultures and learn about local customs. Locals are very sensitive, you may not want to sound rude.
- Always ask for permission if you are photographing a person.

# BASIC GREETING

- Bhutan's official language is Dzongkha, however English is widely spoken.
- Hello – Kuzo Zangpo
- Thank you – Kadrin Che

# CANCELLATION POLICY

- Booking amount is non refundable.
- Any cancellation within the 30 days of the trip date, No Refund shall be granted.
- No refund if you fail to show up on the day of departure under the given timeline that has been provided to you beforehand.
- If the entire trip is cancelled due to natural calamities or unforeseen circumstances such as rain, snowfall, earthquake, landslides, strikes, bandhs, COVID-19 restrictions, or local government restrictions then travelers will receive a travel voucher for the same amount. This voucher can be used within 365 days of issuance for same destination trip worth the same amount. Please note that this is an exceptional scenario and only applies to full trip cancellations, not partial changes or cancellations that may occur due to other unforeseen reasons.
- Travel should be a respectful, safe, and enjoyable experience for everyone.
- If in our opinion your behaviour is causing distress, danger or annoyance to any of our other guests or any third party we reserve the right to terminate your arrangements with us immediately. No refunds will be issued if you are removed from a tour because of a violation of this Traveller Conduct Policy.
- Hotels will be confirmed as per the room availability.
- The rates quoted in the packages are on per person basis & valid for Indian nationals only.
- Vehicle will be available as per itinerary and point to point basis.

Numerous factors such as weather and road conditions, natural calamity, the physical ability of participants etc. may bring alteration in the itinerary. We reserve the right to make necessary changes in the schedule in the interest of safety, comfort and general well-being!



# PICK & DROP TIME

- Pickup Time: Between 02:00 PM to 04:00 PM from Bagdogra Airport on day 1
- Drop Time: Between 03:00 PM to 04:00 PM to Bagdogra Airport on last day
- Airport Pickup and Drop will be done in a batches as per the group size.

**NOTE:**

- On Day 1, If you've booked an early flight, please wait inside the airport. Our journey will commence when everyone has arrived.
- On Last Day, we will depart at 8:30 AM from Phuentsholing. We'll conclude the trip by dropping you off at the airport between 1:00 PM – 2:00 PM. You are free to book any flight departing after 3:00 PM. In the case of a late flight, you have the option to wait at the airport.
- If your pickup or drop falls outside our designated time, you can arrange a separate vehicle at your own expense.
- The designated pick-up location is Bagdogra Airport only. If you are arriving by train or bus, please make your way to Bagdogra Airport for the pick-up.

# HOTELS & VEHICLE INFO

Phuentsholing	<a href="#">Amochu View/ Ghaden Hotel / Similar</a>
Thimpu	<a href="#">Orovilla/ Similar</a>
Phoebjeka	<a href="#">My Home Resort / Similar</a>
Bumthang	<a href="#">DorjiBee Farmhouse/ Similar</a>
Punakha	<a href="#">Pema Karpo/ Similar</a>
Paro	<a href="#">Drukchen / Similar</a>

- We use 3\* Premium Category Hotels Certified by Department of Tourism Bhutan
- By default the rooms are base category, non view rooms.
- You can upgrade the room category at additional cost at the time of booking.
- The Vehicle will depend on the no. of pax of the group on SIC basis

# FAQ'S

✦ **We're a couple, do we need to share a room?**

No Sharing with any other traveller. You will get a room for 2 of you.

✦ **I'm travelling Solo, how will I be accommodated?**

Solo travelers will share rooms with same-gender solo travelers.

✦ Is SDF or Visa Charges are included in this cost?

Yes SDF/ Visa Charges are included.

✦ What currency is used in Bhutan?

Indian currency is valid in Bhutan. No need to exchange.

✦ Can we make online payments or UPI in Bhutan?

No! Currently there is no procedure to pay online in Bhutan by Indian People.

✦ Is veg food or Indian cuisine is available in Bhutan?

Yes, vegetarian food is widely available. You will get many Indian dishes.

✦ Who is this experience best suited for?

There isn't an age restriction on any of our experiences, everyone is welcome. However, the average customer is anywhere between 20 – 35 years old. The experiences involve a good amount of time spent with the group. Depending on what experience you're opting for, there could be a lot of walking and physical exertion.

✦ What Identity proofs are valid for travelling in Bhutan?

For Adults – Voter Card or Valid Passport

**Note: Aadhaar Card is not valid in Bhutan**

✦ Is Bhutan safe for solo travelling?

Certainly, Bhutan is one of the safest destination for solo travelers.

Joining a group trip with Roohconnect can cut down travel costs.

# WHY ROOH CONNECT?



SHREYA PATIL

Founder, Curator - rooh\_connect

Rooh Connect is a travel community that focuses on authentic, raw experiences. We connect like-minded travelers with locals, creating deep, meaningful interactions with the people, culture, and land.

We're not a travel agency. Instead, we collaborate with locals to offer immersive, sustainable journeys that give back to the community. It's about forging genuine connections and experiencing each destination in its truest form.

With Rooh Connect, travel becomes more than sightseeing—it's about bonding with the place, its people, and making an impact together.

@rooh\_connect\_

info@roohconnect.com



Unique Offbeat  
Itineraries



Affordable  
Costs



Empower  
Locals



Experience  
Oriented Travel



# THE UNFILTERED

**rooh  
connect**  
driving real experiences



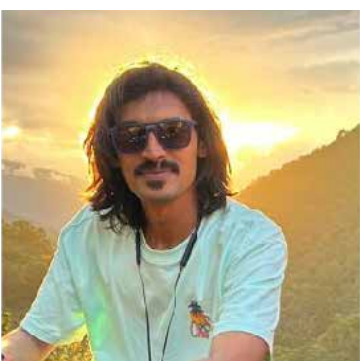
I will definitely recommend Roohconnect for your future trips as they to the proper planing of the entire trip with consideration of ones comfort zone...They can also plan or add a event/place as per your choice and their convenience..So cheers to Roohconnect..

**AKSHAY**  
MUMBAI



I will say, just go for it and you won't regret your decision, not even for a moment.

**RASIKA**  
MUMBAI



The trip organiser curated the tour to perfection, nothing felt amiss. The vibes were great, the travel a great success! With the amount of professionalism and smoothly that was demonstrated, you've have never guessed it was their first planned excursion.

**SRIVARDHAN**  
BANGALORE



Connect with "Roohconnect" if you are a traveller than a tourist! Coz you'll get to experience the offbeat.

**HARSHITHA**  
BANGALORE



The name "RoohConnect" is a true representation of its meaning, which is to connect with the soul. The itinerary of RoohConnect was beautiful, off-beat and different than the other itineraries I found. Trips are supposed to give us a break from our day-to-day hectic life and I feel that there is no point in following the same hectic schedule on trip also. This trip of RoohConnect helped me truly connect with the location and culture of people in Bhutan. I was able to experience the authenticity of that place deeply which would have been difficult with fast paced and busy itineraries which we usually get. Hoping more and more raw, authentic and beautiful trips from RoohConnect. And more power for your vision :)

**PRASAD**  
MUMBAI



My trip to Bhutan with Roohconnect was an unforgettable experience. The itinerary was meticulously planned, perfectly balancing adventure, cultural immersion, and relaxation. The warmth and kindness of the locals greatly enhanced our journey, making even the most challenging aspects feel rewarding. Each day was filled with breathtaking landscapes and rich traditions that deepened our understanding of Bhutanese culture. Roohconnect created an atmosphere of camaraderie, allowing our group to bond despite not knowing each other beforehand. If you're looking for a travel experience that combines cultural depth, adventure, and meaningful connections, I highly recommend Roohconnect for your journey to Bhutan

**ASAD**  
DELHI

## TO BOOK TO YOUR SLOT



**+91 9004296698**