

Katalog Reco-Brandt 2025

botanical/reconstruction models





National Flower - botanical model

- Nature identical model of the national flower of the United Arab Emirates (UAE)
- Flattened shape and deep growing taproot as an adaption to survive in dry, sandy environments
- Very short flowering period after
- Seed bulbs in shape of a roman "Tribulus".

- Epoxy-resin cast from original plants made by silicone molds
- Permanent in shape and color

Size circa (Diorama): 60 x 35cm



Desert botanical model

- Very complex model of a typical shrub of the Arabian Deserts
- Flattened shape and deep growing taproot as an adaption to survive in dry sand
- Very short flowering period after rain
- Seed bulbs are in shape of a roman "Tribulus" weapon
- Predator wasps act as pollinator

- Epoxy-resin cast from original plants made by silicone moulds
- Permanent in shape and color

Size circa: 55 x 40cm

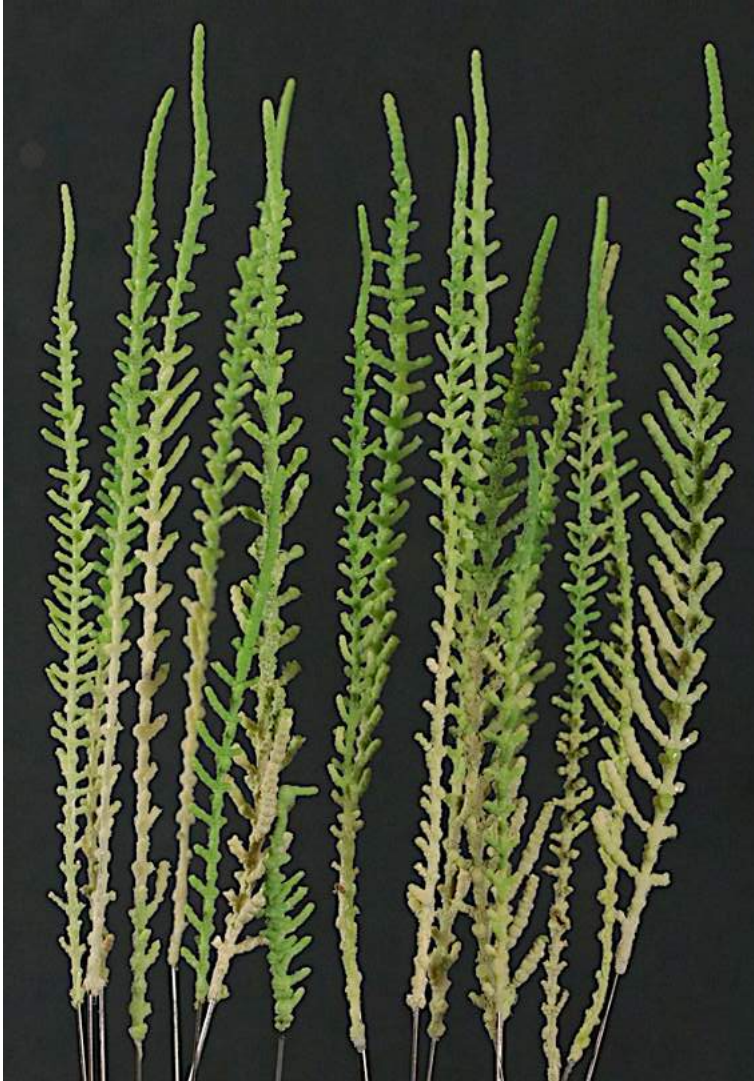


Desert botanical model

- Very complex model of a typical shrub of the Arabian Deserts
- Flattened shape and deep growing taproot as an adaption to survive in dry sand
- Very short flowering period after rain
- Seed bulbs are in shape of a roman "Tribulus" weapon
- Predator wasps act as pollinator

- Epoxy-resin cast from original plants made by silicone moulds
- Permanent in shape and color

Size circa: 55 x 40cm



Desert botanical model

- typical saltwort shrub of the Arabian shores
- succulent plant as an adaption to survive in hypersaline areas
- Epoxy-resin cast from original plants made by silicone moulds
- Permanent in shape and color

Size circa: 25 x 20 cm



Delicate botanical model

- Poisonous plant that appear in Europe, North Africa and South America
- Cast from an original plant
- Nature identical appearance
- Permanent in shape and color
- Highly detailed moulds reproduces even the most fragile anatomical detail in microscopical accuracy
- Pre-colored epoxy resin with hand-painted details

Size circa: 80 x 45cm

Desert botanical model

- Microscopical reproduction of the velvet surface
- Cast from an original plant
- Permanent in shape and color
- Nature identical quality down to microscopic details



Size: 30 x 25cm





botanical models

- The saffron crocus originates from the Middle East
- The stamen of the autumn flowering Saffron-crocus is the most precious spice in the world.

- Epoxy-resin cast from original plants made by silicone moulds
- Permanent in shape and color

Size: 22 x 10cm



Rare botanical models

- Rare helleborine orchid of the Middle East (Cyprus to Himlayas)
- flowers imitating smell of aphids to attract predator wasps as pollinator
- Grows on vertical cliffs with permanent moisture

- Cast from original plant
- 100% permanent in shape and colour for exhibition use

Size circa: 80 x 35cm



Rare botanical models

- Horseshoe bee-orchid of southeast europe
- flowers imitating females of special bees in shape and smell (sexual imitation)
- Cast from original plant

- 100% permanent in shape and colour for exhibition use

Size circa: 26 x 23cm

Desert botanical model

- small desert shrub
- Host plant of desert truffle *Tirmania nivea*
- Cast from an original plant
- Permanent in shape and color
- Nature identical quality down to microscopic details

size: 15 x 15cm





Mushroom model

- Arabian desert truffle
- Growing on *Helianthemum lippi*
- Epoxy-resin cast from original mushroom made with silicone moulds
- Permanent for exhibition use
- Natural identical in shape and colour

Size circa: 6 x 6cm



Mushroom model

- Wood ear fungus
- Growing on elderberry wood
- famous as Asian Mu-Err medicinal mushroom
- Epoxy-resin cast from original mushroom made with silicone moulds
- Permanent for exhibition use
- Natural identical in shape and colour

Size circa: 40 x 18 cm

Mushroom evolution model

- Octopus mushroom is a neophyte invader from Australia
- Imitates dead meat in colour and smell to attract carrion flies transporting its spores
- Epoxy-resin cast from original mushroom made by silicone molds
- Nature identical in shape and colour
- Permanent for exhibition use

Size: 2 x 2 to 23 x 15cm





Mushroom model

- Yellow stagshorn fungus
- Growing on oak wood
- Epoxy-resin cast from original mushroom made with silicone moulds
- Permanent for exhibition use
- Natural identical in shape and colour

Size circa: 15 x 32 cm



front



back

Mushroom model

- Rare coral shaped fungus
- Permanent for exhibition use
- Epoxy-resin cast from original mushroom made with silicone moulds
- Natural identical in shape and colour

Size: 13 x 10cm



Mushroom model

- Poorman's beefsteak fungus
- Growing on oak wood
- Epoxy-resin cast from original mushroom made with silicone moulds
- Permanent for exhibition use
- Natural identical in shape and colour

Size circa: 28 x 25cm



Mushroom model

- Tiered tooth fungus
- Growing on beech wood
- Epoxy-resin cast from original mushroom made with silicone moulds
- Permanent for exhibition use
- Natural identical in shape and colour

Size circa: 12 x 11 cm



front



back

Mushroom model

- Violett coral fungus
- Growing on beech litter
- Epoxy-resin cast from original mushroom made with silicone moulds
- Permanent for exhibition use
- Natural identical in shape and colour

Size circa: 5 x 5 cm



Mushroom model

- coral fungus
- Growing on beech litter
- Epoxy-resin cast from original mushroom made with silicone moulds
- Permanent for exhibition use
- Natural identical in shape and colour

Size circa: 8 x 10 cm



Mushroom model

- Scarlett cup fungus
- Growing on beech & alder wood
- Epoxy-resin cast from original mushroom made with silicone moulds
- Permanent for exhibition use
- Natural identical in shape and colour

Size circa: 4 x 12 cm



Animal model

- Marine iguana
- Endemic at Galapagos
- on artificial separate artificial lava-stone rock
- high detailed epoxy-resin model

- Permanent for exhibition use
- Natural identical in shape and colour

Size circa: 160 x 70cm



1st place Best in Europe – Scientific Models (Master 2023)

- Oldest recorded herbivorous vertebrate (Permian, 280 Million years ago)
- Award winning manufacturing method (European Taxidermy Championships (ETC))
- Fiber-glass in epoxy resin with polyurethane-foam filling
- Life-like and naturalistic sculpting



Size circa (Diorama) : 150 x 90cm



3rd place Excellence Award 2023

- Permian Predator (280 Million years ago)
- Award winning manufacturing method (European Taxidermy Championships (ETC))
- Fiber-glass in epoxy resin with polyurethane-foam filling
- Life-like and naturalistic sculpting

Size circa (Diorama) : 150 x 90cm



2nd place Best in Europe – Scientific Models (Master 2021)

- Prominent Permian vertebrate (280 Million years)
- Award winning manufacturing method (European Taxidermy Championships (ETC))
- Fiber-glass in epoxy resin with polyurethane-foam filling
- Life-like and naturalistic sculpting



Size circa (Diorama) : 150 x 80cm



1st place Best in Europe – Scientific Models (Master 2021)

- Recent Coelacanth fish from the Indian Ocean
- Referred to as „living fossil“ as last remaining Genus of a more than 400 Million years old fish family
- Spectacular discovery in 1938 at Komores Islands
- Award winning manufacturing process (European Taxidermy Championships (ETC))
- Life-like and naturalistic sculpting
- Fiber-glass in epoxy resin with polyurethane-foam filling

Size circa (Diorama) : 160 x 90cm



2nd place Best of collective artist 2018

- Recent Neotonic cave amphibian
- Cooperation work with P. Mildner
- Award winning manufacturing process (European Taxidermy Championships (ETC))
- Life-like and naturalistic sculpting

Size circa (Diorama) : 55 x 40cm



Paleontological Model

- Permian Pareiasaur (260 Million years ago)
- Award winning manufacturing method (European Taxidermy Championships (ETC))
- Fiber-glass in epoxy resin with polyurethane-foam filling
- Life-like and naturalistic sculpting

Size circa: 50 x 25cm



Reconstruction model

- Mysterious Permian Chimaera fish (260 Million years ago)
- Male specimen with elongated curved spines
- Life-like and naturalistic sculpting

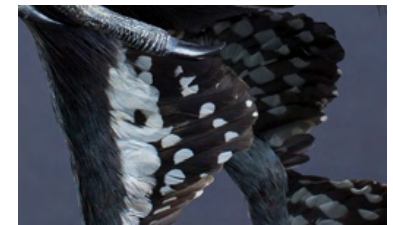
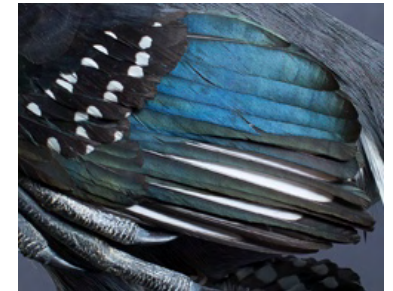
Size circa: 65 x 60cm



Reconstruction model

- Feathered dinosaur with multiple birdlike features from Upper Chinese Jurassic (160 Mill. years)
- Use of coloured and reshaped feathers and skin parts of various current birds species
- Cooperation work with M. Fischer (Biodesigns, Germany)

Size circa: 60 x 37cm





Reconstruction model

- Triassic crinoid with 20 arms (235 Million years ago)
- Variable postures
- Life-like and naturalistic sculpting

Size circa: 80 x 25cm





Best of Europe & Best in World Habitat Award 2023

- high quality botanical model of a complex marsh-land ecosystem

Size circa: 45 x 45cm



Best of show & Best of collective artist 2021

- Display presents the complex ecosystem of the Ghost orchid
- Relationships between mushroom mycelium and orchid bulb
- World-class mounts of small mammals by C. Blumenstein
- Multiple award-winning botanical model

Size circa: 50 x 30cm





Best of collective artist 2018

- Display presents the complex ecosystem of an orchid-meadow
- World-class mounts of small mammals by C. Blumenstein (Germany)

Size circa: 80 x 70cm



NEW - Botanical model

- Complete Lady orchid specimen including root bulbs
 - Epoxy-resin cast from original plants made by silicone molds
 - Complete Lady orchid specimen including root bulbs
- Size circa: 60 x 30





Parasitic botanical model

- Parasitic plant leeching on salt-tolerant shrubs
- Native to Middle East (UAE)
- Medically utilized herb

- Models made to last permanently under normal museum conditions
- No color fading
- Fixated with inner steel wire -> ready to be installed at exhibition displays
- Nature identical appearance

Size circa: 58 x 15cm, 30 x 15cm



Very rare botanical models

- Almost extinct orchid with very fragmented populations
- The Small-dotted orchid is a spectacular plant of south-eastern Europe from Greece to Azerbaijan
- Epoxy-resin cast from original plants made by silicone moulds
- Permanent in shape and color

Size circa: 55 x 40cm



National Flower - botanical models

- National flower of the kingdom of Bhutan
- The blue poppy is a symbol of the Himalayan landscapes
- Microscopical details on flowers, stem, furry leaves and capsules

- Epoxy resin cast from original plant
- 100% permanent in shape and colour for exhibition use

Size circa: 65 x 22cm

Endangered botanical models

- Elder-flowered orchid in three types of flowering colours
- Spectacular and most endangered Orchid
- Cast from original plant – nature identical appearance
- 100% permanent in shape and colour for exhibition use

Sizes circa: 28 x 15cm, 34 x 17cm





Endangered botanical models

- most endangered species, affected by destruction of its habitats
- cast from an original plant
- Reco-Brandt botanical models are most important tools: nature conservation, teaching and education



- international awarded manufacturing method
- 100% permanent for exhibition use
- Nature identical appearance

Sizes circa:

9 x 6 to 18 x 11cm



Endangered botanical models

- Endangered plant of biodiverse dryland meadows
- The self-pollinating bee orchid, once a Mediterranean plant, spread further northern habitats in Europe due to global warming
- Microscopically accurate hand-painted flowers (using binoculars)
- Epoxy-resin cast from original plant made by silicone molds
- 100% permanent in shape and colour

Size circa: 22 x 11cm



Endangered botanical model

- Endangered plant of biodiverse dryland meadows
- The Late spider orchid has complex sexual deception flowers imitating female sand bees to attract males as pollinators
- Microscopical accurate hand-painted flowers (using binoculars)
- Epoxy-resin cast from original plant made by silicone molds
- 100% permanent in shape and colour for exhibition use

Size circa: 25 x 12cm



Endangered endemic botanical models

- Endangered plant of biodiverse dryland meadows
- The Kotschyis bee orchid has complex sexual deception flowers imitating female sand bees to attract males as pollinators endemic to Cyprus
- Epoxy-resin cast from original plant made by silicone moulds
- 100% permanent in shape and colour for exhibition use
- Microscopical accurate hand-painted flowers (using binoculars)

Sizes circa: 18 x 11 to 26 x 13cm



Endangered botanical models

- Frog orchid in three types of flowering colours depending on habitat
- Most endangered specie
- Cast made from from original plant
- 100% permanent in shape and colour for exhibition use

Size circa: 28 x 10cm



Rare botanical model

- The Sparse-flowered orchid is a rare Mediterranean plant growing on low nutrition rocky meadows, especially in southern Italy and Greece
- Epoxy-resin cast from original plants made by silicone moulds
- Permanent in shape and color

Size circa: 28 x 24cm



Rare botanical models

- Natural identical botanical models of rare western marsh orchids
- Cast made from original plant
- Pre-colored Epoxy resin with hand-painted details

Size circa: 50 x 20cm, 43 x 20cm



Rare botanical models

- Violet limodore orchid is a mycoheterotrophic plant lacking chlorophyll
- Leeches on various mushroom mycelium
- Rare plant of Mediterranean forests
- Cast from original plant
- 100% permanent in shape and colour

Size circa: 55 x 10cm, 43 x 10cm

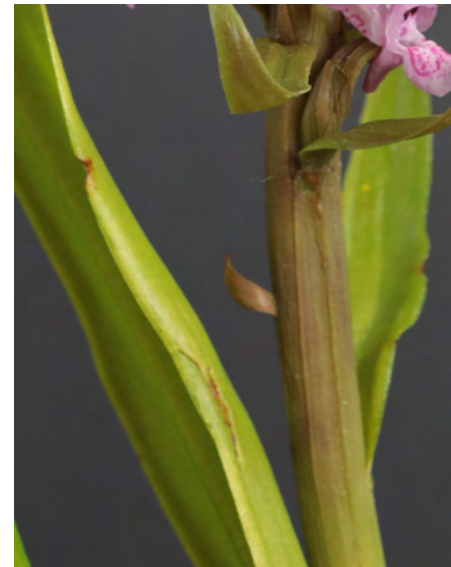


Botanical model

- Prettiest orchids in Europe
- Cast from original plant
- Pre-coloured Epoxy-resin for popping colour effect

Size circa: 56 x 22cm, 48 x 22cm





Botanical models

- Naturel identical botanical models of marsh orchids in two shades of flowering colour
- Cast made from original plant
- Pre-coloured Epoxy-resin

Size circa: 32 x 20cm, 25 x 20cm



Botanical models

- Cast from original plant
- 100% permanent for exhibition use
- Pre-coloured Epoxy-resin
- Nature identical appearance

Size circa: 40 x 22cm



Botanical models

- Early-purple orchid and pale orchid together with their beautiful yellow- pink crossbreed
- Epoxy-resin cast from original plants made in silicone moulds
- Details down to microscopic level
- Permanent in shape and color for exhibition use

Size circa: 42 x 20, 25 x 20cm



Botanical models

- The flowers of the monkey orchid opens from top down – just the opposite as most species of genus *Orchis*
- Epoxy-resin cast from original plants made by silicone moulds
- Permanent in shape and color

Size circa: 42 x 20cm, 37 x 20cm



Mushroom model

- Pink bonnet mushroom
- Growing on spruce litter
- Epoxy-resin cast from original mushroom made with silicone moulds
- Permanent for exhibition use
- Natural identical in shape and colour

Size circa (Diorama): 11 x 25 cm



Mushroom models

- Summer cep mushroom
- Epoxy-resin cast from original mushroom made with silicone moulds
- nature identical in shape and colour
- Permanent color and shape for exhibition use

Size circa: 12 x 11cm



front

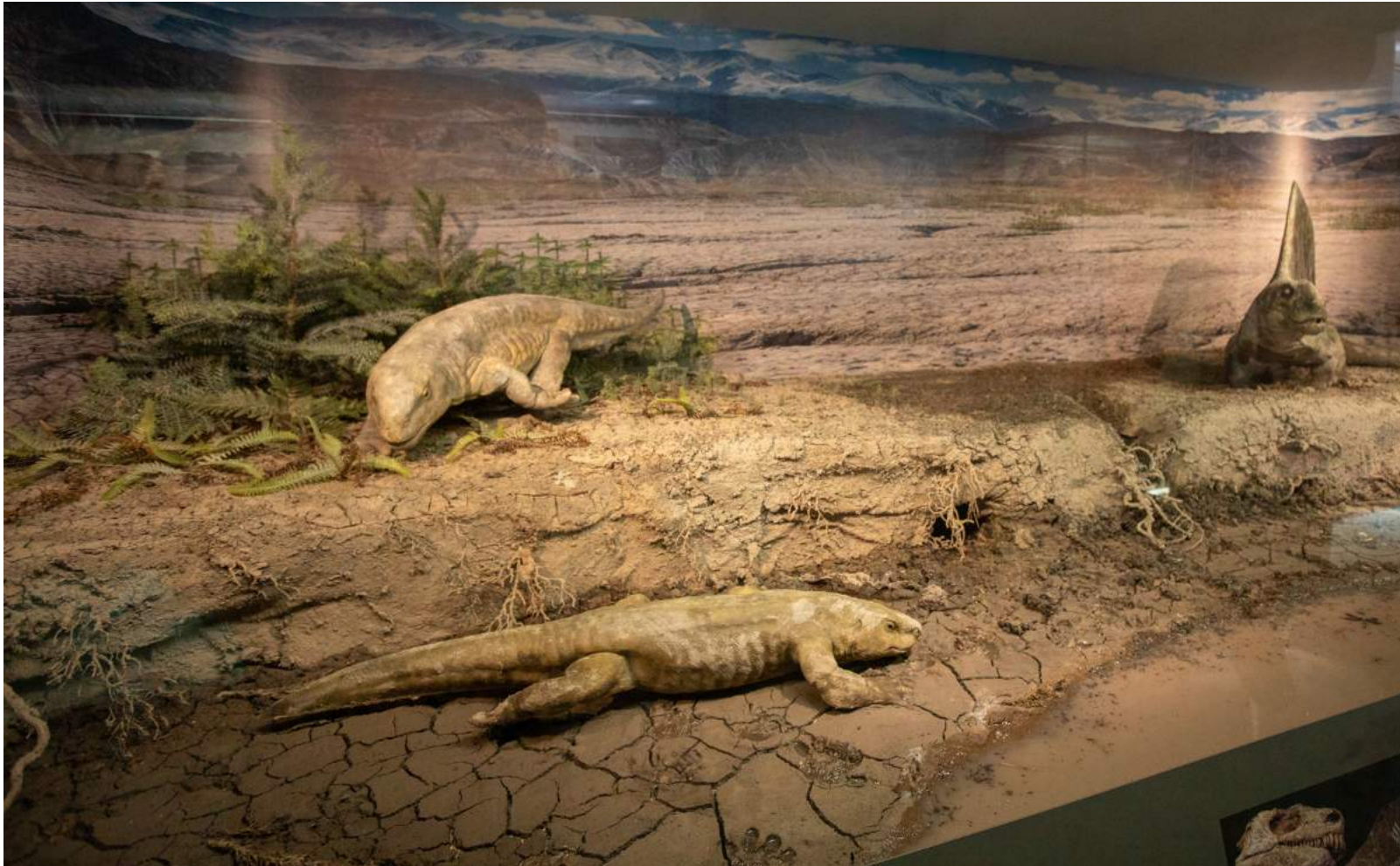


back

Parasite mushroom/ zoological models

- Precious medicinal mushroom from the Himalayas
- Spores infect a moth caterpillar ready to metamorphose in soil, kills it and digest it to grow its spiny fungus
- Epoxy-resin cast from original mushroom made with silicone moulds
- nature identical in shape and colour
- Permanent color and shape for exhibition use

Size circa: 8 x 4cm



Diorama Bromacker landscape – Natural History Museum Erfurt, Germany

- international awarded reconstruction models of *Dimetrodon teutonius*, *Orobates pabsti* and *Diadectes absitus* together with their fossilized footprint trackmarks *Ichniotherium cottae* & *sphaerodactylus* and *Dimetropus* sp.
- including information about fossil remains, landscape relief, climate and ecological conditions

Size: 500 x 240cm

Reconstruction models:

- common Permian neotonic amphibians
Melanerpeton sp. & *Apateon* sp. of lakes and ponds

Size: 25 x 10cm



Reconstruction models:

- lifetimes in larvae-status
- handmade epoxy-resin models

Size: 25 x 10cm



Reconstruction model:

- Permian boomerang-head amphibian of lakes and streams
- flattened body for camouflage like a flat fish
- enormous head as a special suction pump organ to dig out prey animal

Size: 28 x 15cm



Reconstruction model:

- early Triassic rauisuchian reptile
- small agile predator
- one of the earliest bipedal runner (while in high speed)
- fossilized trackmarks called Rotodactylus sp.

Size: 75 x 20cm

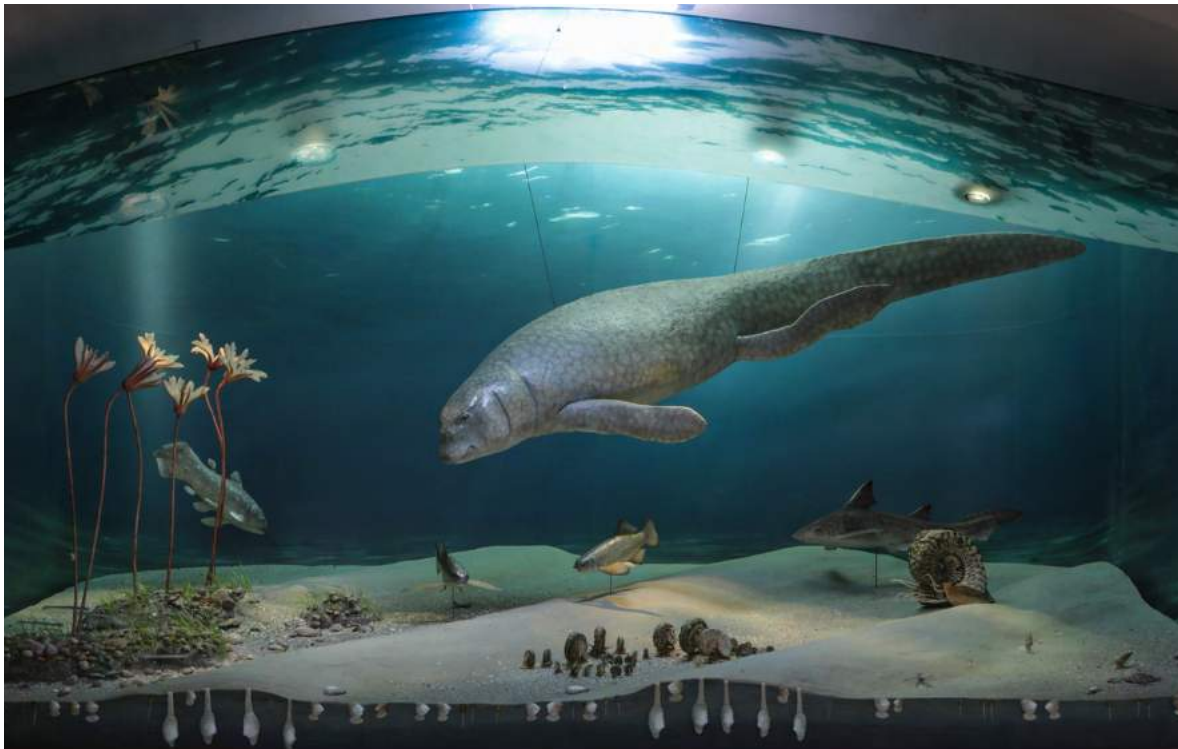


Diorama – Natural History Museum Ohrdruf, Germany

complete reconstruction of a praehistoric marine ecosystem of Middle Triassic age (234 Million years ago) including more than 25 fossil species

- digging seashells (*Pleuromya* sp., *Myophoria* sp. etc)
- school of grazing ammonites (*Ceratites evolutus*) in social structure

- crawling nautiloid predator (*Sephardonutilus tridorsatus*)
- reef builders (*Placunopsis ostracina*, *Coenothyris vulgaris*, *Punctospirella fragilis*)
- filtrating Crinoids *Encrinus liliiformis* and fishlike Conodonts
- various fishes (*Acrodus* sp., *Dollopterus* sp. *Gyrolepis* sp., *Coeleacanth*)
- massive marine sauropterygian reptile *Placodus gigas*



Size: 550 x 230cm



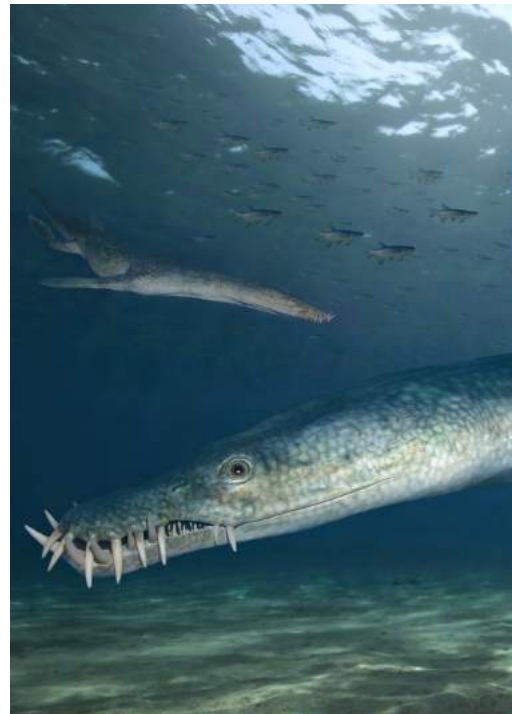
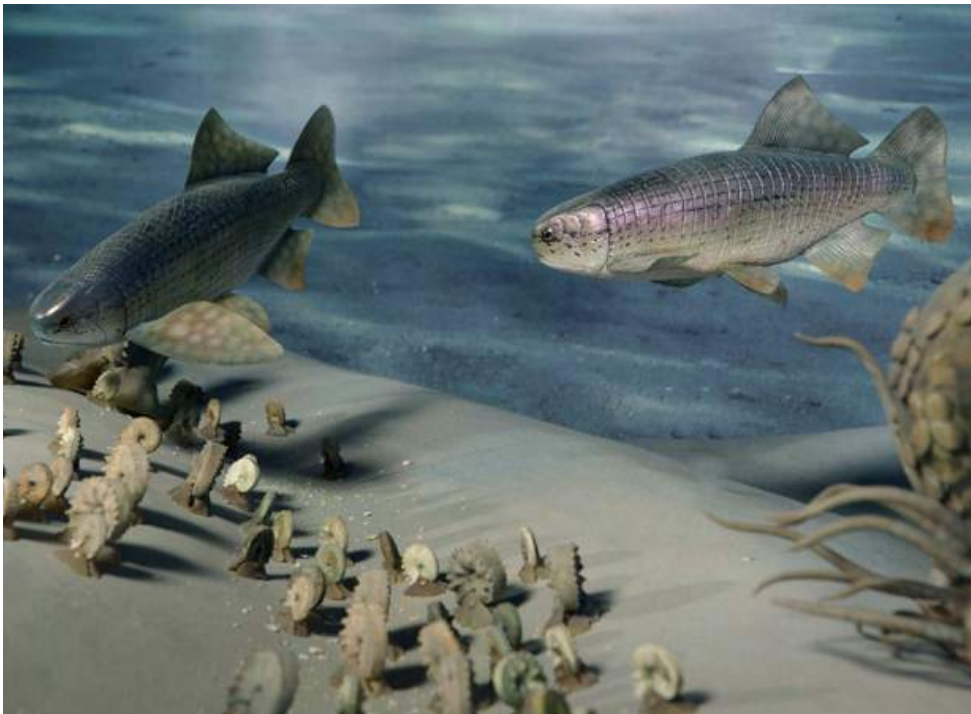
Size: 500 x 240cm

Diorama – Natural History Museum Erfurt, Germany

- complete reconstruction of a prehistoric marine ecosystem of Middle Triassic age (234 Million years ago) including more than 20 fossil species
- huge school of benthic grazing ammonites (*Ceratites spinosus*) with more than 100 sexual dimorph individuals in demographic age structure
- crawling nautiloid predator (*Sephardonautilus tridorsatus*)
- various fishes (*Acrodus* sp., *Dollopterus* sp. *Gyrolepis* sp., *Saurichthys* sp. and *Coeleacanth Garnbergia* sp.)

Diorama – Natural History Museum Erfurt, Germany

- various fishes (*Dollopterus* sp.)
- marine sauropterygian fish-eating predator reptile *Nothosaurus jagisteus*
- marine sauropterygian fish predator reptile *Nothosaurus jagisteus*



Diorama – Natural History Museum Erfurt, Germany

- reconstruction of a complete marine hard ground ecosystem of the Middle Triassic (236 Million years ago)
- Encrinus - Placunopsis bioherm with more then 20 species
- famous ten-armed filtrating crinoids *Encrinus liliiformis*
- shells (*Placunopsis* sp., *Plagiostoma* sp., *Pleuronectites* sp. etc.) and brachiopods (*Coenothyris vulgaris*, *Tetractinella trigonella*)
- urchins *Serpianotiaris* sp., seacucumber *Theelia* sp., starfishes *Trichasteropsis* sp., *Aplocoma* sp etc.
- scientifically still undescribed Coelacanth (*Whiteia* sp.)



140 x 70cm

