



THE METABOLIC SCAM



INTELLIGENCE BRIEFING



A Field Intelligence Brief on
Leptin, Light, and Mitochondrial Truth



★ JOSHUA HACKETT, M.D. ★



OPENING DISPATCH



This is not another diet PDF.

★ You have been told your body is broken because you lack discipline. That story is **incomplete** at best—and **fraudulent** at worst.

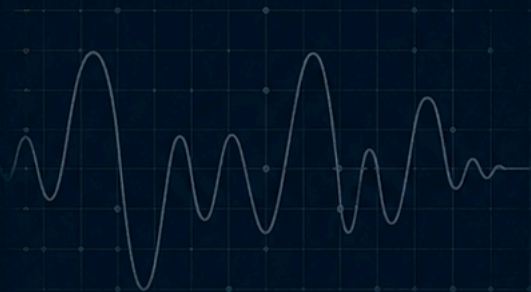
★ You do not have a **calorie problem** first. You have a **signal problem**.

★ In the pages ahead, you will see the hidden **upstream controls** behind hunger, fat storage, fatigue, sleep, thyroid function, and long-term metabolic collapse.

★ This briefing is your first look at the **signal beneath the symptoms**.

★
**Your body
is not
broken.**

**Your signal
is jammed.**



THE CALORIE CULT

[THEY TAUGHT YOU TO BLAME YOURSELF]

They told you it was so simple:

Eat less.

Move more.

Count the calories.

Close the rings.

Track the macros.

Buy the app.

Join the program.

Take the shot.

Try harder.

And if it failed? Who got the blame?

Not Weight Watchers.

Not Noom.

Not MyFitnessPal.

Not the food companies engineering dopamine bombs in a laboratory.

Not the drug companies waiting downstream with a lifetime subscription model.

Not the medical system measuring glucose while ignoring the light environment that helped break the metabolism in the first place.

Oh no...

That was your fault.

Your hunger was weakness.

Your cravings were indiscipline.

Your fatigue was laziness.

Your weight regain was moral failure.

That story is not just incomplete. It is metabolically illiterate. And the only person who paid the price in this exchange was **YOU**.

Reality is, your body is not a calculator.

It is not a bank account.

It is not a spreadsheet.

Your body is a living electrical system.

It reads the sun.

It measures darkness.

It tracks season.

It listens to temperature.

It responds to food timing.

It senses stress.

It runs on mitochondria.

It obeys leptin before it obeys your calorie app.

And when the signal is jammed, the system defends itself. It is far more sophisticated than diets, obesity doctors and weight loss injections give it credit for.

You cut calories, but your brain now reads famine.

You train harder, but your mitochondria now leak more.

You skip breakfast, but your circadian clock loses the plot.

You eat “perfectly” under blue light at 9 p.m. Circadian biology only laughs.

This is the part the calorie priests do not want to touch. Because they can't. They don't know how.

THE REAL STORY

[YOUR BODY IS NOT A CALCULATOR. IT IS A RECEIVER]

Calories matter. But nowhere near like you've been told. When you get this right, you can basically forget about them.

They enter a system already governed by light, time, temperature, stress, sleep, leptin, and mitochondrial charge.

The calorie crowd wants metabolism to be simple.

Not because it is true.

Because simple sells.

A calorie equation can be packaged into an app.

A macro plan can be sold in a spreadsheet.

A step goal can be gamified on your wrist.

A drug can be prescribed when the whole thing collapses.

But your biology was not built by Silicon Valley, Weight Watchers, or the endocrinology department at a hospital that has fluorescent lights in every hallway and vending machines near the ICU.

Your biology was built under the sun.

It was shaped by sunrise.

It was sharpened by darkness.

It was trained by cold.

It was fed by season.

I assure you, these are not wellness tips. They are operating instructions.

And when those instructions get scrambled, your metabolism does exactly what it was designed to do. It protects you. What does that look like?

It slows down.

It stores energy.

It increases hunger.

It lowers thyroid output.

It breaks sleep.

It drives cravings.

It pushes you toward stimulation because your mitochondria are starving for a clean signal.

These without a doubt sound familiar. What is important to understand is that they don't represent failure.

That is ancient biology responding to modern chaos.

The tragedy is that the centralized model sees the downstream mess and calls it disease.

High glucose? Drug it.

Obesity? Drug it.

Low thyroid? Drug it.

Poor sleep? Drug it.

Low mood? Drug it.

You get the point. But almost nobody asks the forbidden question:

What signal created this state in the first place?

Because once you ask that, the room gets very uncomfortable.

You have to talk about artificial light.

You have to talk about indoor living.

You have to talk about screens in children's faces.

You have to talk about late-night eating.

You have to talk about processed food engineered for dopamine.

You have to talk about broken sleep, disconnected feet, dead seasons, fake temperatures, and a medical system that studies humans as if they are divorced from the planet that built them.

That is the real story.

CLASSIFIED

MEET LEPTIN: THE BURIED MASTER SWITCH

Leptin is not just an appetite hormone. It is the **upstream messenger** that tells your brain whether you have enough energy to live, thrive, reproduce, and burn fat—or not.

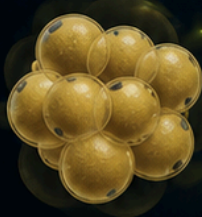


When leptin works, your brain knows: **WE HAVE ENOUGH ENERGY.**

When leptin breaks, your brain thinks: **WE ARE STARVING.**

1. FAT CELLS REPORT

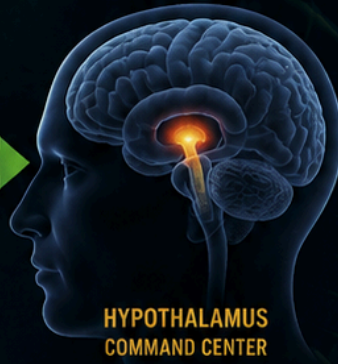
Your fat cells release leptin into the bloodstream based on how much energy is stored.



LEPTIN SIGNAL

2. BRAIN RECEIVES

Leptin crosses the blood-brain barrier and lands in the hypothalamus—your metabolic command center.



3. BODY EXECUTES

The hypothalamus uses the leptin signal to run the entire metabolic empire.

- BURN FAT
- REGULATE THYROID
- CONTROL HUNGER
- PRODUCE ENERGY
- SUPPORT FERTILITY
- BUILD IMMUNITY
- SLEEP DEEPLY
- LIVE LONGER

WHEN LEPTIN RESISTANCE HITS

The signal gets distorted. The brain thinks you're in famine—no matter how much you eat.

1. FAT CELLS SHOUT

Leptin is still released, but the signal is weak, noisy, or ignored.



DISTORTED SIGNAL

2. BRAIN MISREADS

The hypothalamus thinks energy is low. It triggers survival mode.



3. BODY DEFENDS

Your biology does what it's designed to do in a perceived famine.

- SLOW METABOLISM
- INCREASE HUNGER
- STORE FAT
- LOWER THYROID
- CRAVE CARBS
- POOR SLEEP
- LOW ENERGY
- REDUCE FERTILITY

WHAT JAMS THE LEPTIN SIGNAL?

 ARTIFICIAL LIGHT AT NIGHT	 PROCESSED FOODS	 SEDENTARY INDOOR LIFE	 EMF & WIRELESS EXPOSURE	 LATE NIGHT EATING	 CHRONIC STRESS	 POOR SLEEP	 LACK OF COLD EXPOSURE
-------------------------------	---------------------	---------------------------	-----------------------------	-----------------------	--------------------	----------------	---------------------------

LEPTIN IS THE MASTER SWITCH.

FIX THE SIGNAL, AND THE BODY CAN FINALLY DO WHAT IT WAS BUILT TO DO.

THE SIGNAL BEFORE THE CALORIES



YOUR METABOLISM STARTS AT SUNRISE



Before food. Before caffeine.
Before screens. **Your brain**
needs the sun.

Your metabolism does not begin at breakfast. It begins at sunrise.



1. LIGHT HITS THE EYE

Morning light tells the brain what time it is.



2. THE CLOCK GETS SET

The circadian system organizes hormones, energy, and alertness.



3. LEPTIN GETS CONTEXT

The brain interprets energy correctly when timing is clear.



4. MITOCHONDRIA GET ORDERS

Cells know when to burn, repair, and perform.



FIRST FIELD TEST: Get outside within 30 minutes of waking for 10–20 minutes.



MODERN LIFE SCRAMBLES

THE SIGNAL

[MODERN LIFE IS A METABOLIC JAMMING DEVICE]

Your biology was built for sunrise, darkness, movement, season, cold, clean food, and real sleep. Instead, it got screens, seed oils, snack culture, LED nights, synthetic comfort, and a medical system pretending none of it matters.

This is where the polite wellness people start getting nervous.

Because if metabolism is controlled by signal, then we have to ask an uncomfortable question:

Who is corrupting the signal?

Not in theory. In your actual life. It takes confrontation, it takes not ignoring reality any longer.

So, who is corrupting your signal?

Your phone.

Your laptop.

Your LED bulbs.

Your late-night Netflix habit.

Your DoorDash dinner at 9:30 p.m.

Your kid's iPad.

Your "healthy" protein bar.

Your office lighting.

Your sleep tracker.

Welcome to the modern zoo. You've been in a cage and didn't even realize it.

[WHAT'S JAMMING YOUR SIGNAL?]

ARTIFICIAL LIGHT AT NIGHT

The crime:

Blue light after sunset tells the brain that day never ended.

The cost:

Melatonin disruption, poor repair, circadian confusion, broken leptin rhythm.

Reality:

Your phone is not just stealing attention. It is stealing darkness.

INDOOR LIVING

The crime:

Humans now spend most of life separated from the sun, earth, weather, and seasonal light.

The cost:

Weak circadian signaling, poor mitochondrial charge, low biological orientation.

Reality:

You cannot outsource the sun to a supplement company.

PROCESSED FOOD

The crime:

Factory food hijacks dopamine while pretending to be nourishment.

The cost:

Cravings, overeating, inflammation, distorted satiety, metabolic confusion.

Reality:

They did not design that snack to satisfy you. They designed it to survive your better judgment.

CONSTANT SNACKING

The crime:

The body never gets a clean fasting signal.

The cost:

Insulin noise, leptin noise, gut-clock disruption, no metabolic rhythm.

Reality:

Grazing is for cattle. Humans are rhythmic animals.

LATE-NIGHT EATING

The crime:

Food arrives when the body should be repairing.

The cost:

Liver confusion, poor sleep, impaired fat burning, circadian collapse.

Reality:

A perfect meal at the wrong time becomes bad information.

WIRELESS AND TECH SATURATION

The crime:

The nervous system is never off-grid.

The cost:

Signal noise, poor recovery, stress physiology, mitochondrial pressure.

Reality:

Your biology did not evolve inside a router.

THERMAL COMFORT

The crime:

Never cold. Never hot. Never challenged by the environment.

The cost:

Weak mitochondrial adaptation, poor thermogenesis, soft biology.

Reality:

Comfort is useful. Worshipped comfort is decay with good upholstery.

FAKE FITNESS CULTURE

The crime:

Training harder while ignoring light, sleep, food timing, and recovery.

The cost:

Inflammation, cortisol load, poor fat oxidation, “fit but fried” physiology.

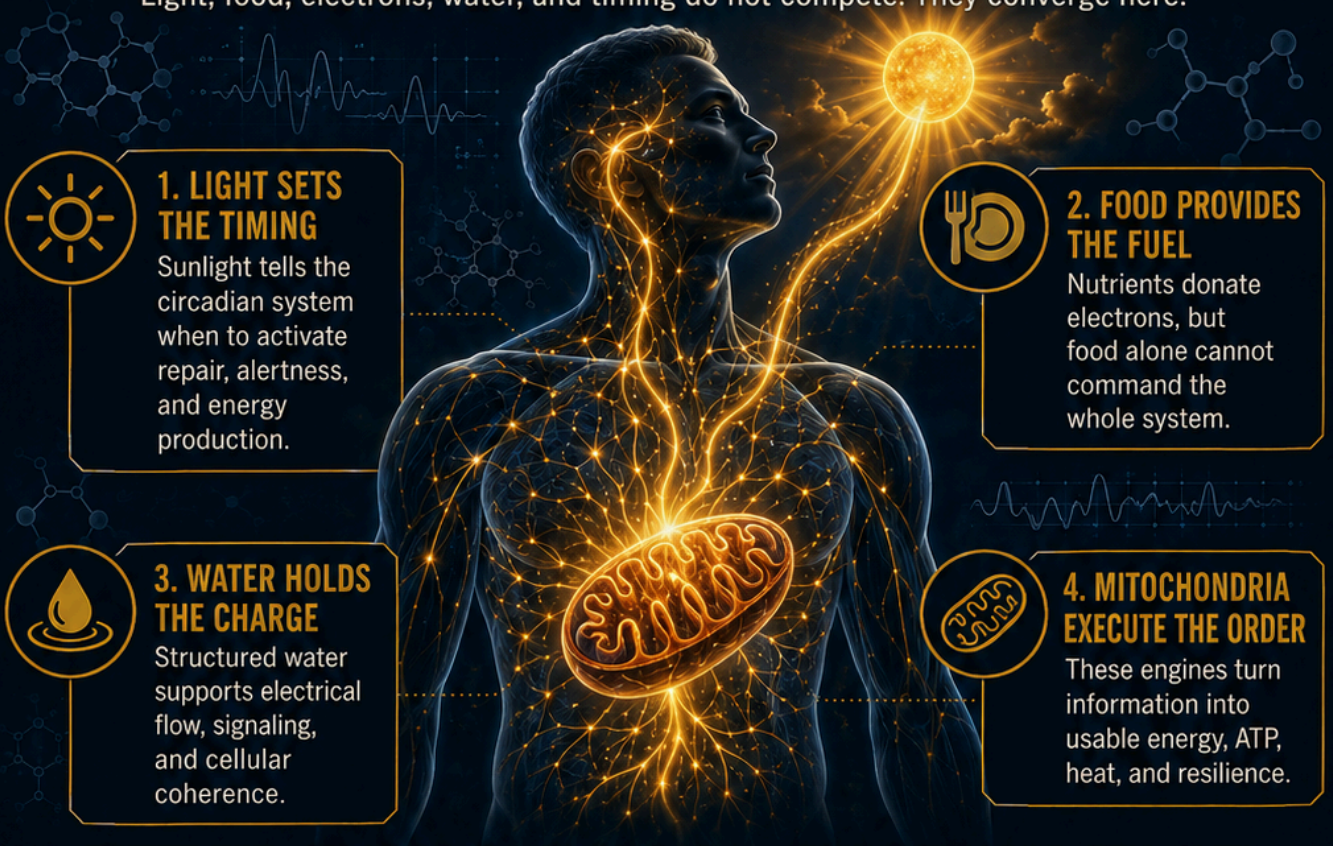
Reality:

You cannot out-burpee a broken circadian clock.

POWER GRID

MITOCHONDRIA: THE POWER GRID BENEATH THE SCAM

★
Light, food, electrons, water, and timing do not compete. They converge here.



1. LIGHT SETS THE TIMING

Sunlight tells the circadian system when to activate repair, alertness, and energy production.



2. FOOD PROVIDES THE FUEL

Nutrients donate electrons, but food alone cannot command the whole system.



3. WATER HOLDS THE CHARGE

Structured water supports electrical flow, signaling, and cellular coherence.



4. MITOCHONDRIA EXECUTE THE ORDER

These engines turn information into usable energy, ATP, heat, and resilience.

★★ **When the signal is clean, the power grid hums.** ★★
★★ **When the signal is broken, the whole organism pays the price.** ★★

★ WHEN THE GRID BREAKS DOWN ★



LOW ENERGY



BRAIN FOG



CRAVINGS



INFLAMMATION



POOR SLEEP



SLOW FAT LOSS



MOOD
INSTABILITY



FRAGILE
RESILIENCE



SIGNAL MODEL: Restore light, timing, sleep, and environment — and mitochondria can finally do their job.

★★★

STATUS CHECK

ARE YOU ALREADY IN IT?

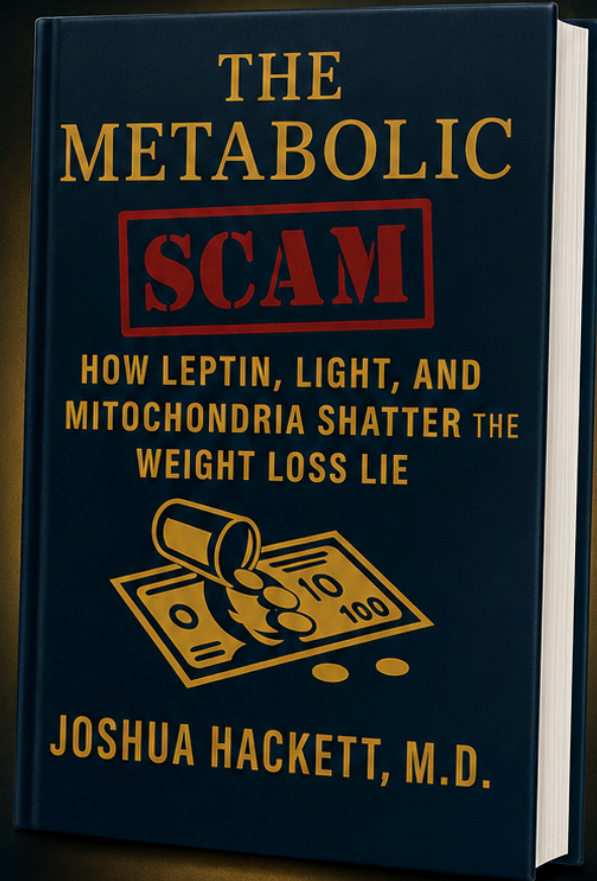
★ **ARE YOU THE CUSTOMER OR THE CAPTIVE?** ★

- 🎯 You wake up tired.
- 🎯 Your phone sees your face before the sun does.
- 🎯 Your food comes from factories.
- 🎯 Your cravings feel louder than your discipline.
- 🎯 Your sleep is fragile.
- 🎯 Your energy is borrowed from caffeine.
- 🎯 Your metabolism feels like it is defending fat instead of burning it.
- 🎯 Your doctor says your labs are "fine," but your body keeps filing complaints.

That is not random. That is the modern metabolic cage. This briefing shows you the battlefield. The book shows you how the war was built.

INSIDE THE FULL CASE:

- ★ The calorie cult
- ★ The buried master switch
- ★ The captured environment
- ★ The enemy vectors
- ★ The subscription model
- ★ The sovereign alternative



★ **»» READ THE FULL CASE ««**

BUY THE METABOLIC SCAM ON AMAZON 

★ The Metabolic Scam: Intelligence Briefing • Joshua Hackett, M.D. ★



KNOW THY ENEMY

[THE ENVIRONMENT IS THE WEAPON]

Now that you understand the calorie grid, you can finally see the attack.

The modern world did not merely change your food.

It changed your light.

It changed your sleep.

It changed your temperature.

It changed your electromagnetic field.

It changed your movement.

It changed your meal timing.

It changed your relationship to the sun, the earth, the seasons, and your own mitochondrial signal.

Then it called the collapse “aging.”

Then it called the weight gain “overeating.”

Then it called the fatigue “depression.”

Then it called the cravings “lack of willpower.”

Then it sold you a subscription.

That is the scam. You're the cow, they get the cash.

The enemy is not one villain in a black robe stroking a hairless cat, though admittedly that would make the documentary easier to cast.

The enemy is an architecture. Built over generations of lies and deceit.

A system of incentives.
A system of products.
A system of indoor captivity.
A system of artificial light.
A system of processed food.
A system of pharmaceutical dependency.
A system of digital overstimulation.
A system that breaks the signal, then sells treatment for the symptoms.

This is why the calorie cult is so useful to the machine.

It keeps your eyes pointed at the plate while the environment quietly rewires the organism.

It tells you to count almonds while your retina is being blasted by blue light at midnight.

It tells you to hit your protein goal while your mitochondria are drowning in artificial signals.

It tells you to close your fitness rings while your circadian clock is bleeding out under LED bulbs, Wi-Fi routers, late-night screens, and food engineered to hijack dopamine.

It tells you metabolism is a math problem because math problems are easy to monetize.

Reality check: you are a solar-powered, water-based, electrically governed, mitochondria-driven mammal living inside a synthetic cage and being told the cage is progress.

The cage has names:

Big Food.
Big Pharma.
Big Tech.
Centralized medicine.
Corporate wellness.
The wearable economy.
The calorie app economy.
The GLP-1 subscription economy.
The fake fitness economy.
The artificial light economy.

LIGHT CAPTURE

ENEMY VECTOR 01: THE WEAPONIZATION OF LIGHT

Control the light, and you control the clock. Control the clock, and you control the metabolism.



- 5000K LED
- SCREEN GLARE
- BLUE LIGHT
- DISRUPTED SIGNALS

- NATURAL LIGHT ENVIRONMENT**
- SUNRISE EXPOSURE
 - DAYLIGHT BALANCE
 - DIM EVENINGS
 - DARK NIGHTS

1. SUNRISE SETS THE CLOCK



Morning light anchors circadian timing and gives the brain an honest report of time and energy.

2. LED NIGHTS FAKE MIDDAY



Screens, LEDs, and artificial indoor glare tell the brain that the day never ended.

3. MELATONIN FALLS. CORTISOL RISES.



The light environment shifts repair, sleep depth, appetite signaling, and leptin timing.

4. THE ORGANISM PAYS THE PRICE



Poor sleep, cravings, brain fog, fat gain, low recovery, and metabolic confusion follow.

★★★ **The body cannot tell time if the light lies to it.** ★★★



POOR SLEEP



CRAVINGS



FAT GAIN



BRAIN FOG



CIRCADIAN CHAOS



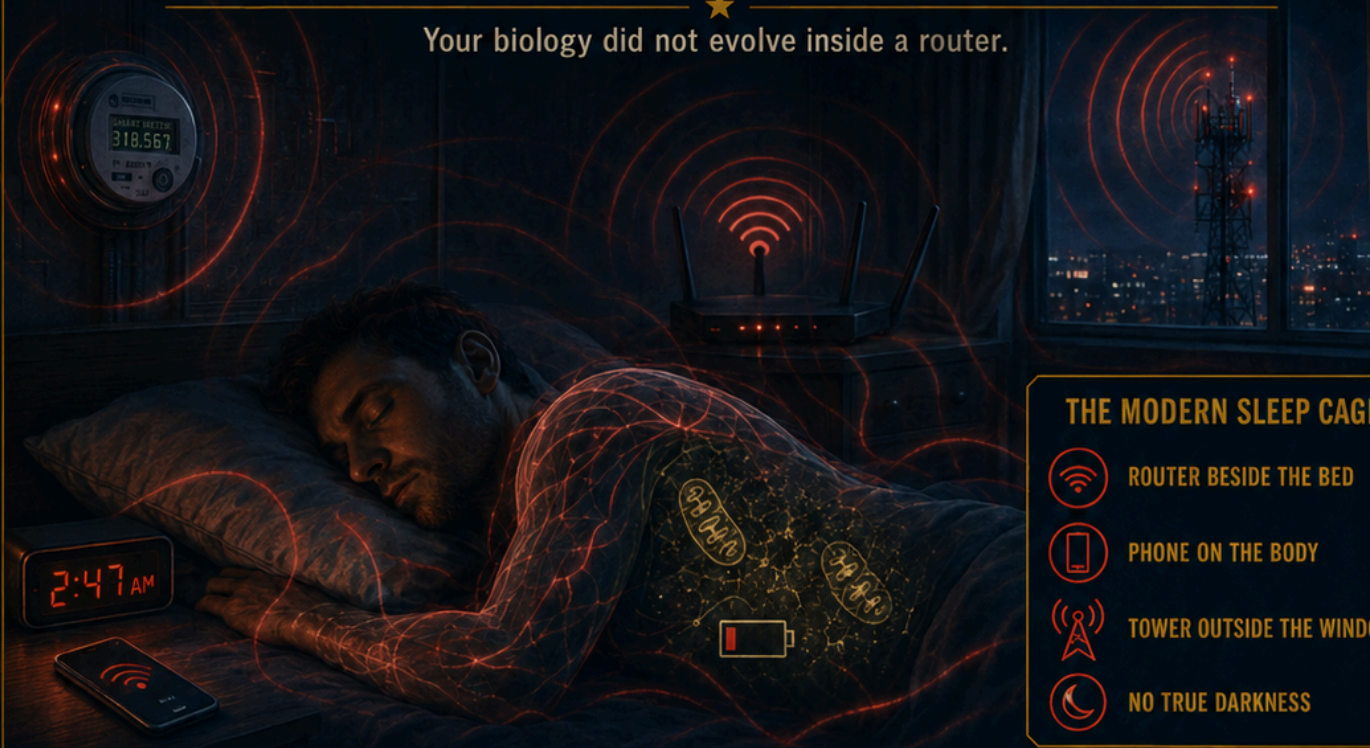
THE ENEMY HIDES IN PLAIN SIGHT: THE SCREEN, THE BULB, THE OFFICE, THE CASINO, THE NIGHT. ★

THE METABOLIC SCAM: INTELLIGENCE BRIEFING • Joshua Hackett, M.D.



**BIOELECTRIC
FOG**

ENEMY VECTOR 02: THE BIOELECTRIC FOG

★
Your biology did not evolve inside a router.



THE MODERN SLEEP CAGE

-  ROUTER BESIDE THE BED
-  PHONE ON THE BODY
-  TOWER OUTSIDE THE WINDOW
-  NO TRUE DARKNESS

1. THE ROOM NEVER GOES QUIET



Wireless signals, blinking devices, and powered walls keep the nervous system inside a synthetic field.

2. THE BODY LOSES ORIENTATION



The organism evolved with earth signals, darkness, and distance from man-made frequencies.

3. RECOVERY GETS DISTORTED



Sleep depth, autonomic balance, and repair suffer when the signal environment stays noisy.

4. THE ORGANISM PAYS THE PRICE



Poor sleep, fatigue, brain fog, agitation, and metabolic confusion follow.

★★★ An organism cannot fully recover in a field that never powers down. ★★★



POOR SLEEP



BRAIN FOG



FATIGUE



AGITATION



METABOLIC STRESS



THE ENEMY HIDES IN PLAIN SIGHT: THE ROUTER, THE PHONE, THE TOWER, THE SMART ROOM. ★

THE METABOLIC SCAM: INTELLIGENCE BRIEFING • Joshua Hackett, M.D.

STOP MANAGING THE WRECKAGE. RECLAIM THE SIGNAL

[BY NOW, THE PATTERN SHOULD BE OBVIOUS. LET'S RECAP]

[THE ENEMY]

OFFICIAL NARRATIVE

- Calories first.
- Leptin ignored.
- Morning light dismissed.
- Artificial light normalized.
- Indoor life accepted.
- Food timing treated as irrelevant.
- Symptoms managed downstream.
- Sleep sedated.
- Hunger suppressed.
- Fatigue stimulated.
- Exercise used as punishment.
- Drugs presented as destiny.
- Authority outsourced.
- ***The body treated as broken.***

[THE REALITY]

SOVEREIGN MODEL

- Light before food.
- Leptin before calories.
- Environment before macros.
- Mitochondria before medication.
- Darkness before sleep drugs.
- Food timing before food math.
- Cold and heat as metabolic signals.
- Movement as biology, not punishment.
- Symptoms treated as intelligence.
- Medicine used wisely, not worshipped.
- Nature used before subscription.
- ***Authority reclaimed.***

The scam was not merely bad diet advice.

The scam was teaching you to look downstream while the upstream environment was captured.

The sovereign model turns your attention back to the source.

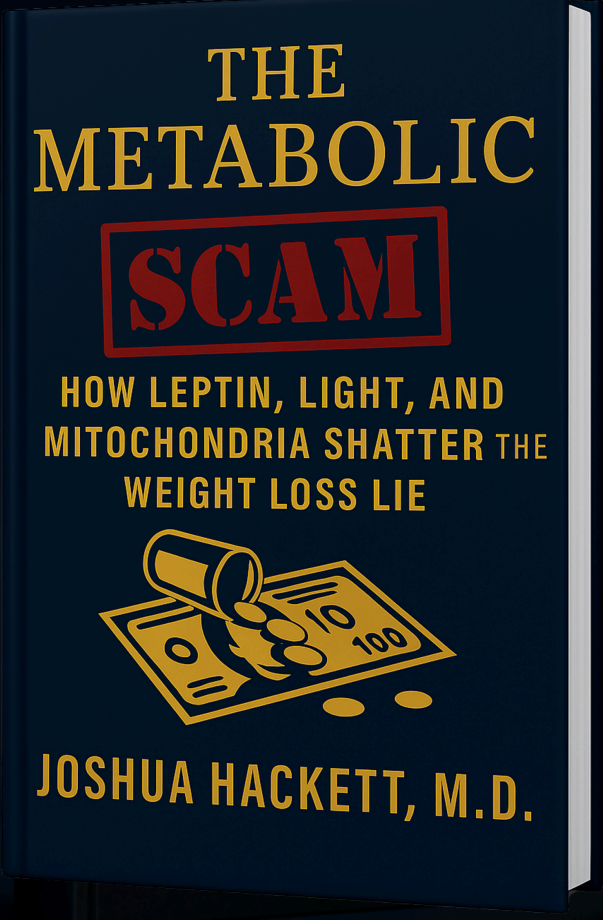
INTELLIGENCE BRIEFING COMPLETE

YOU HAVE SEEN THE BATTLEFIELD. NOW READ THE FULL CASE.

This briefing exposed the architecture behind the metabolic scam:

- ✓ The calorie cult.
- ✓ The buried master switch.
- ✓ The captured environment.
- ✓ The enemy vectors.
- ✓ The subscription model.
- ✓ The sovereign alternative.

The book gives you the full investigation.



INSIDE THE FULL BOOK:

 <p>The complete morning light protocol</p>	 <p>Leptin resistance explained like you've never seen before</p>	 <p>Mitochondria, signal, and your metabolic power grid</p>	 <p>Environmental warfare and the bioelectric attack</p>	 <p>The sovereign model to restore command of your biology</p>
--	--	--	--	---

STOP MANAGING THE WRECKAGE. START RECLAIMING THE SIGNAL.

 **GET YOUR COPY ON AMAZON** 

"The system profits when you stay confused. You win when you understand."

 THE METABOLIC SCAM: INTELLIGENCE BRIEFING | JOSHUA HACKETT, M.D. 

