

# Vanalar



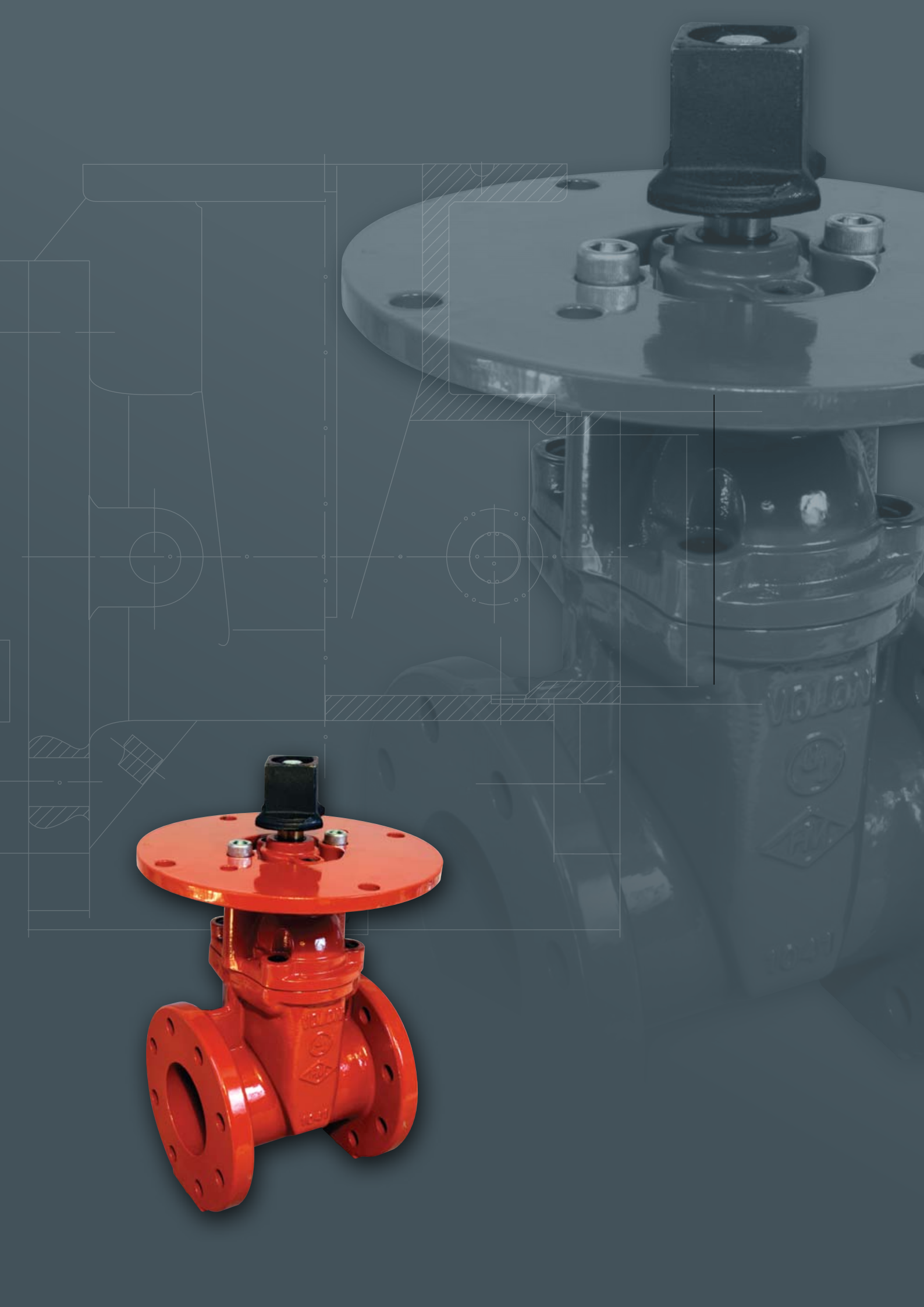
Yangın Tesisat Vanaları



[www.teknoyangin.com.tr](http://www.teknoyangin.com.tr)

[www.fireshop.com.tr](http://www.fireshop.com.tr)





# İçindekiler

## Tekno Yangın

1986 yılında yangın sektöründe çalışmaya başlayan kurucularımız 1995 yılından itibaren “Tekno Yangın” olarak faaliyetine devam etmektedir.

**Tekno Yangın** 25 yıllık tecrübe birikimine sahip konusunda uzman kadrosu ile yurt içi ve yurt dışında operasyonel sistem tasarım, uygulama ve geliştirme projeleri gerçekleştirmektedir.

**Kadro**; fonksiyonlarında uzun yıllar çeşitli firmalarda ve kademelerde görev yapmış ve teknolojik gelişmeleri yakından izleyen deneyimli kişilerden oluşmaktadır.

## Misyonumuz

Misyonumuz, teknolojik gelişmeleri yakından ve sürekli takip edip, müşterilerimizle bu bilgileri paylaşarak uygun ve ekonomik çözümler sunmaktır.

## Hizmetlerimiz

TEKNO olarak; müteahhitlere, proje firmalarına, perakende satış firmalarına hizmet vermekteyiz.

## Hizmetlerimizi şu şekilde gruplayabiliriz;

**Projelendirme ve Danışmanlık;** Yurt içi ve yurt dışında gerçekleştirilen işlerde, Türkiye Yangın Yönetmeliği, NFPA, EN, VdS, LPCB, SNIP normlarında ve uluslararası sigorta şirketlerinden (FM) onaylı projelendirme yapmaktayız.

**Projelendirme;** Avan, ana tasarım, uygulama, atölye imalatı için gerekli çalışmaları ve hidrolik hesapları kapsamaktadır. Bu amaçla, Türkiye’de 3 boyutlu yangınla mücadele sistemi tasarım programını (Autosprink VR Production System) kullanan ilk ve tek firma olmaktan gurur duyuyoruz.

**Malzeme temini;** Geniş malzeme portföyümüz ve stoklarımız ile hizmet vermekteyiz.

**Süpervizyon, devreye alma.**

**TEKNO, ÇÖZÜM ORTAĞINIZ..**



## İÇİNDEKİLER

Sertifikalarımız.....	5
Kelebek Vana Yivli-Dişli .....	6
Yükselen Milli Vana .....	7
Kelebek Vana Flanşlı.....	8
Kelebek Vana Yivli .....	9
OSY Yükselen Milli Vana Flanşlı.....	10
OSY Yükselen Milli Vana Yivli .....	11
NRS Yükselmeyen Milli Vana Yivli Flanşlı .....	12
NRS Yükselmeyen Milli Vana Yivli .....	13
NRS Yükselmeyen Milli vana .....	14
İşaret Direği .....	15
Çek Vana Yivli .....	16
Basınç Emniyet Vanası.....	17
Basınç Düşürücü Vana .....	18
Süpervizör Vana.....	19
Referanslar .....	20-21
Faaliyet Alanlarımız .....	22



*Dođru  
tercih...*

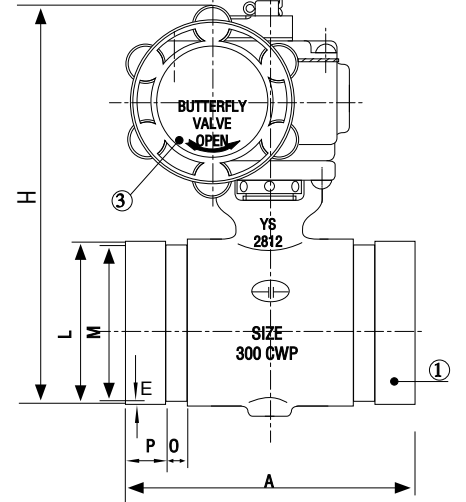
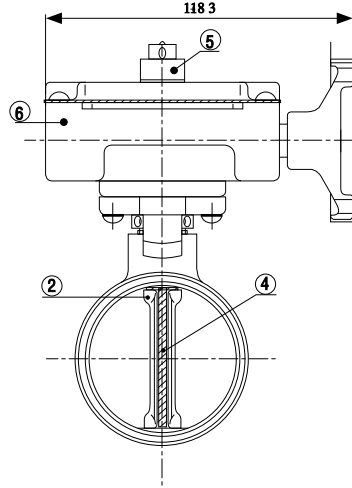


# Sertifikalarımız



## Kelebek Vana (Yivli) (300 PSI)

### Butterfly Valve Grooved

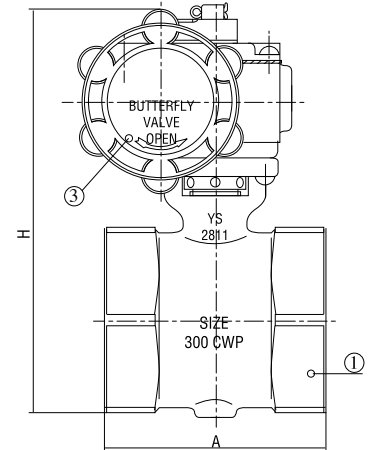
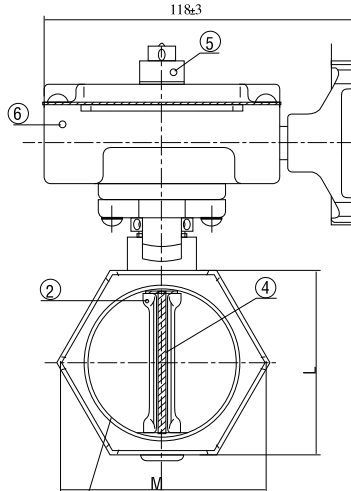
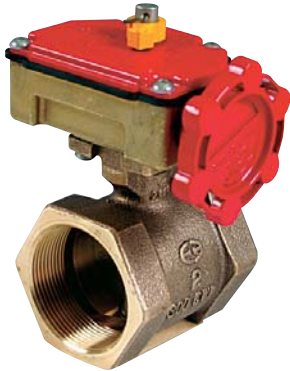


MATERIAL LIST		
NO.	Part Name	Material
1	Body	Bronze B584
2	Disc	ST. Steel 304
3	Handwheel	WCB A216
4	Seat	Viton
5	Indicator	Powder Metal
6	Housing	Brass

Size	1 1/2" DN30		1 1/2" DN40		2" DN50		2 1/2" DN65	
A	±98	1.78	102	±2.03	104	±2.03	114	±2.54
H	±132.2	2.54	138.9	±2.54	154.2	±2.54	167.2	±2.54
P	±15.88	0.76	15.88	±0.76	15.88	±0.76	15.88	±0.76
O	±7.95	0.76	7.95	±0.76	7.95	±0.76	7.95	±0.76
M	±38.99	0.38	45.09	±0.38	57.15	±0.38	69.09	±0.46
L	±42.4	0.41	48.3	±0.48	60.3	±0.61	73	±0.76
E	1.6		1.6		1.6		1.98	

## Kelebek Vana (Dişli) (300 PSI)

### Butterfly Valve Threaded

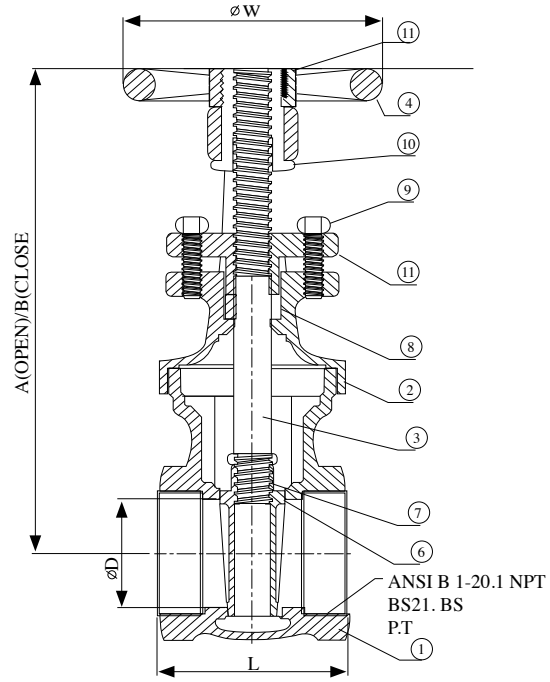


MATERIAL LIST		
NO.	Part Name	Material
1	Body	Bronze B584
2	Disc	ST. Steel 304
3	Handwheel	WCB A216
4	Seat	Viton
5	Indicator	Powder Metal
6	Housing	Brass

DIMENSION (mm)				
Size	1"	1 1/2"	2"	2 1/2"
A±2	54	66.7	73	114
H±3	125.4	130.2	142.1	167.2
L(REF)	39.7	49.2	55.6	86.5
M(REF)	44.5	55	60.3	96

## OSY Yükselen Milli Vana (Dişli) 300 PSI

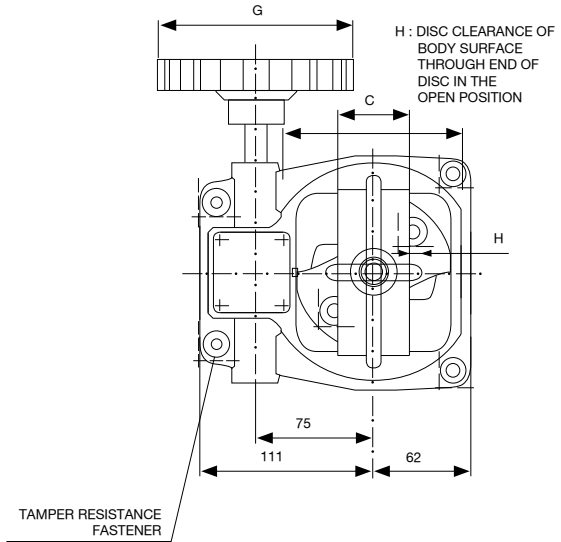
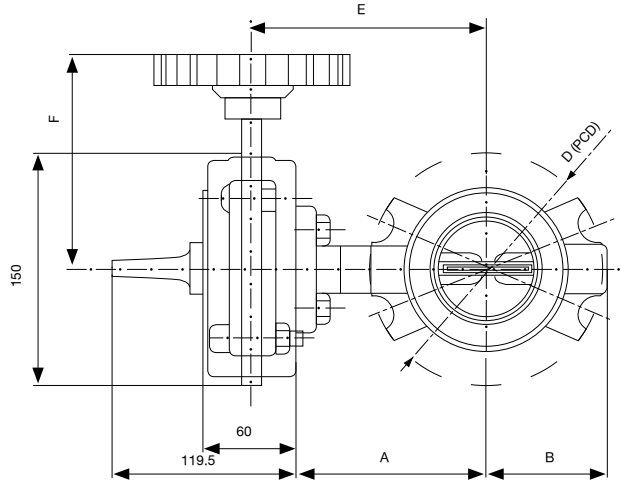
□ OSY Gate Valve



Dimensions (mm)				
Size	A + 2	L + 0.5	ØD	ØW+3
¾ "	173	145,5	20	80
1"	196,5	163	25	80
1 ¼ "	220,5	181,5	32	80
1 ½ "	243	197	37,5	100
2"	276	227	50	120

Material List			
No	Name	Material	Qty
1	Body	Bronze	1
2	Bonnet	Bronze	1
3	Stem	Brass	1
4	Handwheel	Cast Iron	1
5	Packing Gland	Bronze	1
6	Disc	Bronze	1
7	Disc Pin	SS-304	1
8	Gland Packing	Graphite	1
9	Stud	Steel	2
10	Yoke Bushing	Brass	1
11	Set Screw	Steel	1

## Kelebek Vana (Flanşlı) 300PSI □ Butterfly Valve Flanged

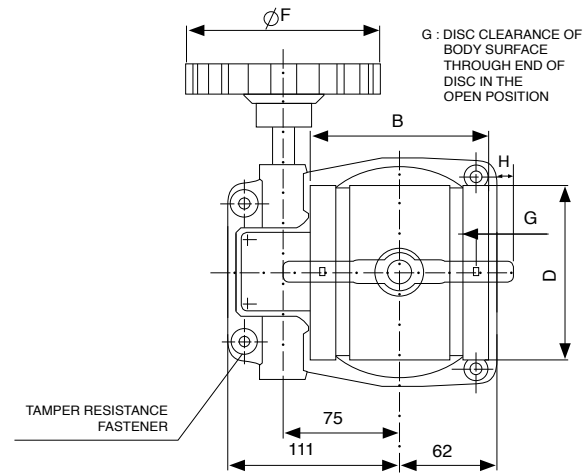
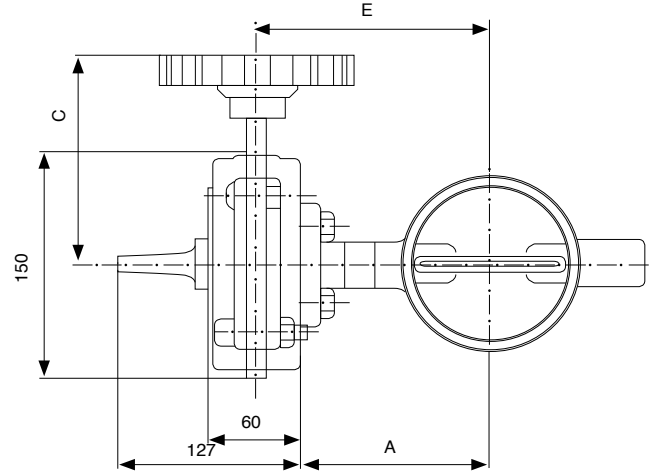


Size	A	B	C	D	E	F	G	H
2 ½ "	4.3(105)	3.80(96.4)	3.80(96.4)	2.87(73.0)	5.31(135)	5.04(128)	5.04(128)	
3"	4.41(112)	3.60(92)	3.80(96.4)	3.50(88.9)	5.59(142)	5.04(128)	5.04(128)	
4"	5.71(145)	4.30(108)	4.54(115.4)	4.50(114.3)	6.89(175)	5.04(128)	5.04(128)	
6"	7.05(179)	5.71(145)	5.21(132.4)	6.63(168.3)	8.23(209)	8.66(220)	8.66(220)	0.28(7.10)
8"	8.03(204)	6.70(170)	5.80(147.4)	8.63(219.1)	9.21(234)	8.66(120)	8.66(220)	0.95(24.2)

Working Pressure : 300 PSI (21.4 Bars)  
 Max. Test Pressure : 600,PSI (42,8 Bars)  
 Max. Working Temp : 250 F. (120C.)

## Kelebek Vana (Yivli) 300PSI

□ Butterfly Valve Grooved



Size	A	B	C	D	E	F	G	H
2 ½ "	5.35 (136)	3.43(46)	1.81(46)	5.88(149.4)	6.54(166)	5.31(135)	5.04(128)	0.32(8.2)
3"	5.63(143)	3.66(93)	1.81(46)	6.62(168.2)	6.81(173)	5.31(135)	5.04(128)	0.57(14.5)
4"	6.14(156)	4.29(109)	2.05(52)	7.88(200.2)	7.32(186)	5.31(135)	5.04(128)	0.89(22.7)
6"	7.40(188)	5.67(144)	2.20(56)	10.06(296.8)	8.58(218)	8.66(193)	8.66(220)	1.79(45.4)
8"	8.74(222)	6.54(166)	2.28(58)	13.0(330.2)	9.92(252)	8.66(193)	8.66(220)	2.72(69.1)

Working Pressure : 300 PSI (21.4 Bars)  
 Max. Test Pressure : 600 PSI (42.8 Bars)  
 Max. Working Temp : 250 F. (120 C.)

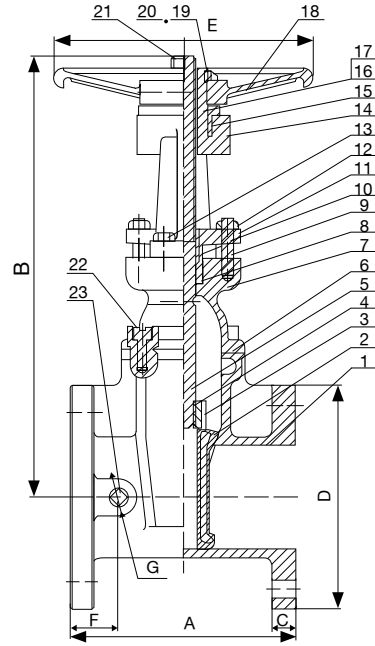


## OSY Yükselen Milli Vana (Flanşlı) 250PSI / 300 PSI

□ Rising Stem Flanged Joint Ends  
Resilient Wedge Gate Valves



Flanged



**AWWA C509**

MATERIAL LIST		
PART	SPECIFICATION	
1	Valve Body	Ductile Iron ASTM A 536
2	Resilient Wedge	Ductile Iron ASTM A 536/EPDM ASTM D 2000
3	Wedge Nut	Bronze ASTM B 584 UNS C83600
4	Dower Pin	Stainless Steel ASTM A 276 UNS S42000
5	Stem Back Seat O-ring	EPDM ASTM D 2000
6	Bonnet Gasket	EPDM ASTM D 2000
7	Bonnet	Ductile Iron ASTM A 536
8	Stem Packing	EPDM ASTM D 2000
9	Threaded Rod	Carbon Steel Zinc Plated
10	Gland Bushing	ASTM B 584 Bronze ASTM B 584
11	Gland	ASTM A 126-B Cast Iron ASTM A 126-B
12	Gland Nut	Stainless Steel 18-8

MATERIAL LIST		
PART	SPECIFICATION	
13	Yoke Screw	Alloy Steel ASTM A 574M Zinc Plated
14	Yoke	Cast Iron ASTM A126-B
15	Yoke	Bronze ASTM B 584
16	Flat Point Set Screw	Alloy Steel ASTM F 912M Black Oxide
17	Yoke Bushing Retainer	Cast Iron ASTM A126-B
18	Handwheel	Ductile Iron ASTM A 536
19	Handwheel Nut	Carbon Steel Zinc Plated
20	Flat Head Screw	Carbon Steel Zinc Plated
21	Stem	Bronze ASTM B 150 UNS C61400
22	Bonnet Screw	Alloy Steel ASTM A 574M Zinc Plated
23	NPT Pipe Plug	Malleable Iron ANSI B16.3 (Epoxy Coated)

Size		Dimension																Bolt Circle		Flange Holes	Turns To Open	Weight	
		A		B Open		B Closed		C		D		E		F		G						Lbs	Kg
In	mm	In	mm	In	mm	In	mm	In	mm	In	mm	In	mm	In	mm	In	mm	In	mm				
2 1/2	65	7.5	190	17.8	453	14.9	378	0.69	17.5	7.0	178	7.9	200	1.50	38	1.6	40	5.50	140	4	8.8	45	20
3	80	8.0	203	19.7	500	15.9	405	0.75	19.0	7.5	191	7.9	200	1.73	44	2.1	54	6.00	152	4	10.5	53	24
4	100	9.00	229	21.0	534	16.6	422	0.94	24.0	9.0	229	10.2	260	2.13	54	2.1	54	7.50	191	8	10.4	94	43
6	150	10.5	267	29.3	744	22.9	581	1.00	25.4	11.0	279	12.4	315	2.24	57	2.5	64	9.50	241	8	15.7	154	70
8	200	11.5	292	37.0	939	28.5	724	1.13	28.6	13.5	343	14.8	375	2.48	63	2.8	70	11.75	298	8	17.2	247	112
10	250	13.0	330	44.8	1139	34.5	877	1.19	30.2	16.0	406	16.4	416	2.56	65	2.8	70	14.25	362	12	21.4	349	159
12	300	14.0	356	52.2	1326	39.9	1014	1.25	31.8	19.0	483	17.5	445	2.91	74	3.4	86	17.00	432	12	25.5	484	220



## OSY Yükselen Milli Vana (Yivli) 250PSI / 300 PSI

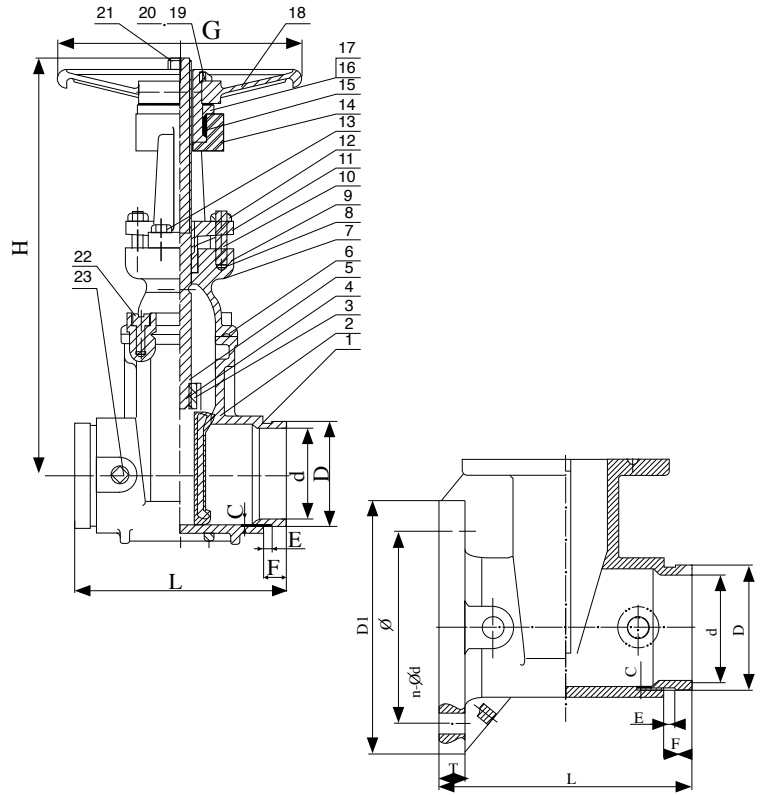
## Rising Stem Groove Joint Ends Resilient Wedge Gate Valves



GroovexGroove



Fig x Groove



**AWWA C509**

MATERIAL LIST	
PART	SPECIFICATION
1	Valve Body Ductile Iron ASTM A 536
2	Resilient Wedge Ductile Iron ASTM A 536/EPDM ASTM D 2000
3	Wedge Nut Bronze ASTM B 584 UNS C83600
4	Dowel Pin Stainless Steel ASTM A 276 UNS S42000
5	Steam Back Seat O-Ring EPDM ASTM D 2000
6	Bonnet Gasket EPDM ASTM D 2000
7	Bonnet Ductile Iron ASTM A 536
8	Stem Packing EPDM ASTM D 2000
9	Threaded Rod Carbon Steel Zinch Plated
10	Gland Bushing Bronze ASTM B 584
11	Gland Cast Iron ASTM A126-B

MATERIAL LIST	
PART	SPECIFICATION
12	Gland Nut A536 Steel 18-8
13	Yoke Screw Alloy Steel ASTM A 574M Zinc Plated
14	Yoke Cast Iron ASTM A126-B
15	Yoke Bushing Bronze ASTM B 584
16	Flat Point Set Screw Alloy Steel ASTM F 912M Black Oxide
17	Yoke Bushing Retainer Cast Iron ASTM A126-B
18	Handwheel ASTM A 536 Ductile Iron ASTM A 536
19	Handwheel Nut Carbon Steel Zinch Plated
20	Flat Head Screw Carbon Steel Zinch Plated
21	Stem Bronze ASTM B 150 UNS C61400
22	Bonnet Screw Alloy Steel ASTM A 574M Zinc Plated

Size		Dimension																		Bolt Circle	Flange Holes	Turns To Open	
		L		C		D		E		F		G		d		D1		T					
In	mm	In	mm	In	mm	In	mm	In	mm	In	mm	In	mm	In	mm	In	mm	In	mm	In	mm		
3	80	8.0	203	0.08	2	3.50	89	0.35	9	0.98	25	10.00	254	3.0	73	7.5	191	0.75	19	6.00	152.5	4-Ø19	10.5
4	100	9.00	229	0.08	2	4.49	114	0.35	9	0.98	25	10.00	254	4.0	100	9.0	229	0.94	24	7.50	190.5	8-Ø19	13.75
6	150	10.5	267	0.08	2	6.61	168	0.35	9	0.98	25	12.40	315	6.0	150	11.0	279	1.00	25.4	9.50	241	8-Ø23	16
8	200	11.5	292	0.09	2,3	8.62	219	0.47	12	1.22	31	14.76	375	8.0	200	13.5	343	1.13	28.6	11.73	298.5	8-Ø23	17.5
10	250	13	330	0.1	2.55	10.74	272,9	0.52	13.2	1.25	31.7	16.38	416	10	250	15.98	406	1.19	30.2	14.25	362	12-Ø23	21.5
12	300	14	356	0.13	3.35	12.78	3245	0.52	13.2	1.25	31.7	17.52	445	12	300	19.2	483	1.25	31.8	17.01	432	12-Ø23	26

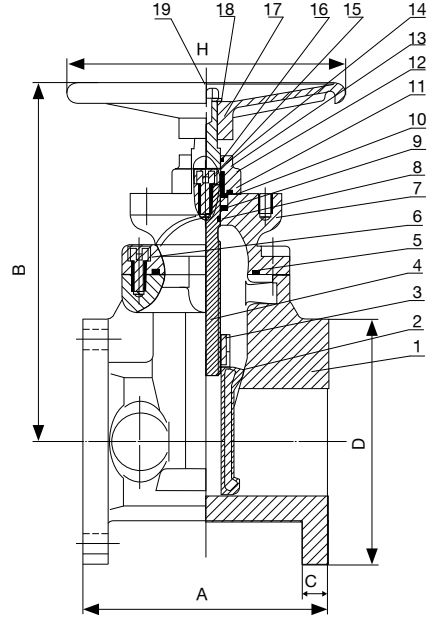


## NRS Yükselmeyen Milli Vana (Flanşlı) 250PSI / 300PSI

□ Non-rising Stem Flanged Ends Resilient Wedge Gate Valves



Flanged



**AWWA C509**

MATERIAL LIST		
PART	SPECIFICATION	
1	Valve Body	Ductile Iron ASTM A 536
2	Resilient Wedge	Ductile Iron ASTM A 536/EPDM ASTM D 2000
3	Wedge Nut	Bronze ASTM B 584 UNS C83600
4	Stem	Bronze ASTM B 150 UNS C61400
5	Bonnet Gasket	EPDM ASTM D 2000
6	Bonnet Screw	Alloy Steel ASTM A 574M Zinc Plated
7	Bonnet	Ductile Iron ASTM A 536
8	Stem Primary O-Ring	EPDM ASTM D 2000
9	Stem Thrust Washer (lower)	Bronze ASTM B 584 UNS C83600
10	Stem Thrust Washer (Upper)	Stainless Steel ASTM A 276 UNS S41000

MATERIAL LIST		
PART	SPECIFICATION	
11	Gland Seal O-Ring	EPDM ASTM D 2000
12	Stem Seal Bushing	Bronze ASTM B 584 UNS C83600
13	Stem Secondary O-Ring (2)	EPDM ASTM D 2000
14	Gland Flange	Ductile Iron ASTM A 536
15	Gland Flange Screw	Alloy Steel ASTM A 574M Zinc Plated
16	Stem Ring Wiper	EPDM ASTM D 2000
17	Square Operating Nut	Cast Iron ASTM A126-B
17(A)	Handwheel (Optional)	Ductile Iron ASTM A 536
18	Flat Washer	Carbon Steel Zinc Plated
19	Screw	Alloy Steel ASTM A 574M Zinc Plated

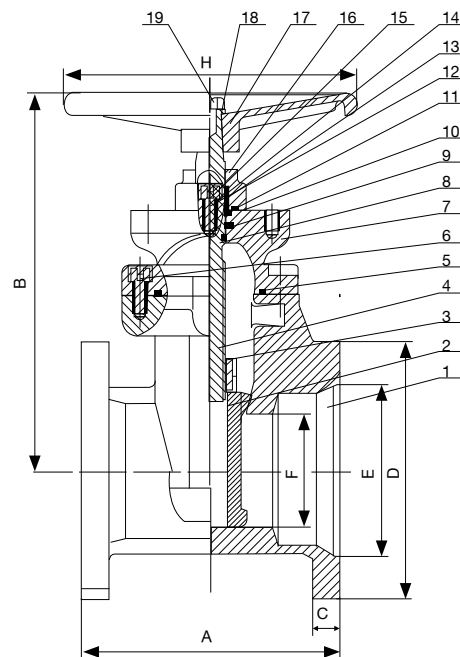
Size		Dimension										Bolt Circle		Flange Holes	Turns To Open	Weight	
		A		B		C		D		H						lbs	Kg
In	mm	In	mm	In	mm	In	mm	In	mm	In	mm	In	mm				
2	50	7.0	178	10.0	255	0.63	16.0	6.0	152	7.9	200	4.75	121	4	6.5	30	14
2 1/2	65	7.5	190	11.3	287	0.69	17.5	7.0	178	7.9	200	5.50	140	4	8.8	35	16
3	80	8.0	203	12.6	321	0.75	19.0	7.5	191	10.2	260	6.00	152	4	10.6	45	20
4	100	9.0	229	13.5	344	0.94	24.0	9.0	229	10.2	260	7.50	191	8	13.0	71	32
6	150	9.1	267	17.4	441	1.00	25.4	11.0	279	14.8	375	9.50	241	8	15.6	122	55
8	200	11.5	292	20.8	529	1.13	28.6	13.5	343	14.8	375	11.75	298	8	17.3	196	89
10	250	13.0	330	24.2	614	1.19	30.2	16.0	406	15.7	400	14.25	362	12	21.4	294	134
12	300	14.0	356	27.6	700	1.25	31.8	19.0	483	19.7	500	17.00	432	12	25.3	426	194

## NRS Yükselmeyen Milli Vana (Flanşlı) 250PSI / 300PSI

□ Mechanical Joint Ends Resilient Wedge Gate Valves



Mechanical Joint



**AWWA C509**

MATERIAL LIST		
PART	SPECIFICATION	
1	Valve Body	Ductile Iron ASTM A 536
2	Resilient Wedge	Ductile Iron ASTM A 536/EPDM ASTM D 2000
3	Wedge Nut	Bronze ASTM B 584 UNS C83600
4	Stem	Bronze ASTM B 584 UNS C83600
5	Bonnet Gasket	EPDM ASTM D 2000
6	Bonnet Screw	Alloy Steel ASTM A 574M Zinc Plated
7	Bonnet	Ductile Iron ASTM A 536
8	Stem Primary O-Ring	EPDM ASTM D 2000
9	Stem Thrust Washer (lower)	Bronze ASTM B 584 UNS C83600
10	Stem Thrust Washer (Upper)	Stainless Steel ASTM A 276 UNS S41000

MATERIAL LIST		
PART	SPECIFICATION	
11	Gland Seal O-Ring	EPDM ASTM D 2000
12	Stem Seal Bushing	Bronze ASTM B 584 UNS C83600
13	Stem Secondary O-Ring (2)	EPDM ASTM D 2000
14	Gland Flange	Ductile Iron ASTM A 536
15	Gland Flange ScREW	Alloy Steel ASTM A 574M Zinc Plated
16	Stem Ring Wiper	EPDM ASTM D 2000
17	Square Operating Nut	Cast Iron ASTM A126-B
17(A)	Handwheel (Optional)	Ductile Iron ASTM A 536
18	Flat Washer	Carbon Steel Zinc Plated
19	Screw	Alloy Steel ASTM A 574M Zinc Plated

Size		Dimension														Bolt Circle	Flange Holes	Turns To Open	Weight		
		A		B		C		D		E		F		H					Lbs	Kg	
In	mm	In	mm	In	mm	In	mm	In	mm	In	mm	In	mm	In	mm	In	mm				
3	80	8.0	203	12.7	322	0.94	24	7.7	196	4.9	126	3.1	80	12.2	260	6.19	157	4	10.8	43	20
4	100	10.0	254	13.5	344	1.00	26	9.1	232	6.0	153	3.9	100	10.2	260	7.50	191	4	13.0	70	36
6	150	11.5	292	17.4	441	1.06	27	11.1	283	8.1	206	5.9	150	14.8	375	9.50	241	6	15.7	112	51
8	200	11.5	292	20.8	529	1.12	28	13.4	340	10.3	261	7.9	200	14.8	375	11.75	298	6	17.3	170	77
10	250	13.0	330	24.2	614	1.18	30	15.7	400	12.3	313	9.8	250	15.7	400	14.00	356	8	21.4	267	121
12	300	14.0	356	27.6	700	1.25	32	18.0	456	14.4	367	11.8	300	19.7	500	16.25	413	8	25.3	388	176



## NRS Yükselmeyen Milli Vana (Yivli) (250PSI / 300PSI)

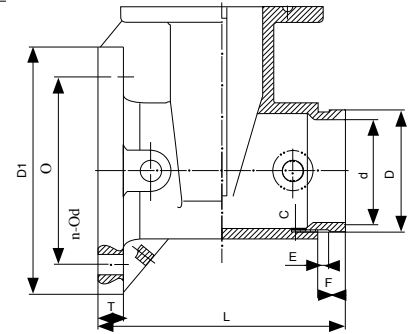
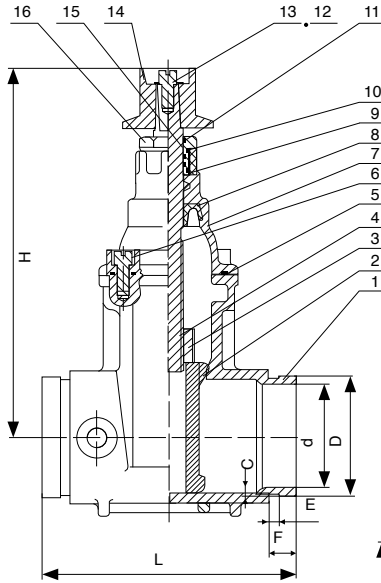
□ Non-rising Stem Groove Joint Ends Resilient Wedge Gate Valves



GroovexGroove



Flg x Groove



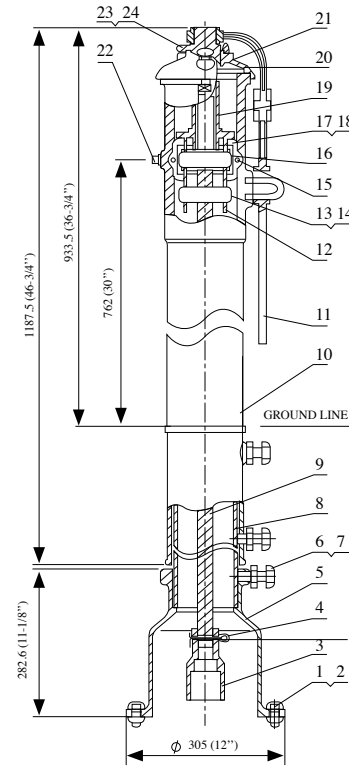
**AWWA C509**

MATERIAL LIST			MATERIAL LIST		
PART	SPECIFICATION		PART	SPECIFICATION	
1	Valve Body	Cast Iron ASTM A 536	10	Gland Seal O-Ring	EPDM ASTM D 2000
2	Resilient Wedge	Ductile Iron ASTM A 536/EPDM ASTM D 2000	11	Stem Ring Wiper	EPDM ASTM D 2000
3	Wedge Nut	Bronze ASTM B 584 UNS C83600	12	Operating Nut Washer	Carbon Steel Zinc Plated
4	Stem	Stainless Steel ASTM A 276 UNS S41000	13	Operating Nut Screw	Alloy Steel ASTM A 574M Zinc Plated
5	Bonnet Gasket	EPDM ASTM D 2000	14	Square Operating Nut	Cast Iron ASTM A126-B
6	Bonnet Screw	Alloy Steel ASTM A 574M Zinc Plated	14(A)	Handwhell (Optional)	Ductile Iron ASTM A 536
7	Bonnet	Cast Iron ASTM A 126-B	15	Stem Primary O-Ring	EPDM ASTM D 2000
8	Stem Primary O-Ring	EPDM ASTM D 2000	16	Stem Seal Bushing	Brass ASTM B 16 UNS C36000
9	Stem Thrust Washer	Stainless Steel ASTM A 276 UNS S41000			

Size	Dimension																				Bolt Circle	Flange Holes	Turns To Open				
	L		H Open		H Closed		C		D		E		F		G		D		D1					T			
In	mm	In	mm	In	mm	In	mm	In	mm	In	mm	In	mm	In	mm	In	mm	In	mm	In	mm	In	mm	In	mm		
3	80	8.0	203	20.1	510	15.9	405	0.08	2	3.50	89	0.35	9	0.98	25	10.00	254	3.0	73	7.5	191	0.75	19	6.00	152.5	4-ø19	10.5
4	100	9.00	229	22.4	568	16.6	422	0.08	2	4.49	114	0.35	9	0.98	25	10.00	254	4.0	100	9.0	229	0.84	24	7.50	190.5	8-ø19	13.75
6	150	10,5	267	30.3	769	22.9	581	0.08	2	6.61	168	0.35	9	0.98	25	12,40	315	6.0	150	11.0	279	1.00	25.4	9.50	241	8-ø23	16
8	200	11.5	292	37.8	960	28.5	724	0.09	2,3	8.62	219	0.47	12	1.22	31	14,76	375	8.0	200	13.5	343	1,13	28.6	11.73	298.5	8-ø23	17.5
10	250	13	330	45.1	1145	35.1	891	0.1	2,55	10.74	272.9	0.52	13.2	1.25	31.7	16,38	416	10	250	16	406	1,19	30.2	14.25	362	12-ø26	21.5
12	300	14	356	52.4	1330	40.2	1020	0.13	3,35	12.78	324.5	0.52	13.2	1.25	31.7	17,52	445	12	300	19.2	483	1,25	31.8	17.01	432	12-ø26	26

## İşaret Direği

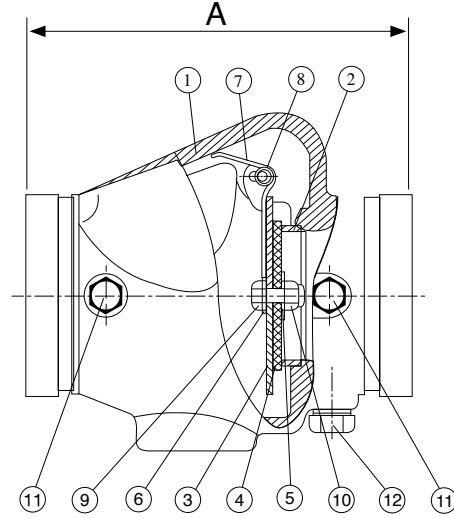
□ Post Indicator



Materials List		
No.	Component	Material
1	Hex Cap Screw	Carbon Steel ASTM A307B
2	Hex Tut	Carbon Steel ASTM A307B
3	Crane Coupling	Ductile Iron ASTM A536 Gr. 65-45-12
4	Cotter Pin	Stainless Steel AISI 304
5	Base Falnge	Cast Iron ASTM A126 Class B
6	Hex Nut	Carbon Steel ASTM A307B
7	Hex Cap Screw	Carbon Steel ASTM A307B
8	Standpipe	Carbon Steel ASTM A53
9	Stem 1" Square	Carbon Steel AISI 1045
10	Body	Cast Iron ASTM A126 Class B
11	Locking Wrench	Ductile Iron ASTM A536 Gr. 65-45-12
12	Target Carrirer Nut	Bronze ASTM B62 C83600
		Stainless Steel AISI 304
13	Hex Cap Screw	Carbon Steel ASTM A307B
14	Hex Nut	Carbon Steel ASTM A307B
15	Hex Cap Screw	Carbon Steel ASTM A307B
16	Target	Cast Aluminium
17	Window Glass	Plexiglass
18	Gasket	PTFE
19	Operating Nut	Bronze ASTM B62 C83600
		Stainless Steel AISI 304
20	Top section	Cast Iron ASTM A126 Class B
21	Snap Ring	Stainless Steel AISI 1066
22	Plug	Malleable Iron
23	Square Nut	Carbon Steel ASTM A307B
24	Hex Cap Screw	Carbon Steel ASTM A307B

## Çek Vana (Yivli) 350PSI

□ Check Valve



### Material Specifications

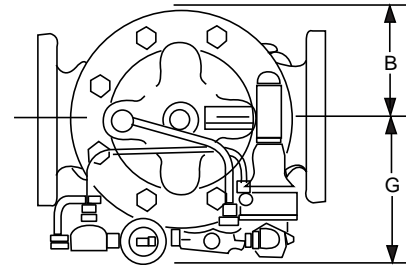
#### PART SPECIFICATION

1. Body Ductile Iron ASTM A 536
2. Seat Bronze
3. Clapper Stainless Steel 304
4. Facing Seal EPDM Rubber
5. Clamping Ring Stainless Steel 304
6. Gasket EPDM Rubber
7. Spring Stainless Steel 302
8. Hinge Pin Stainless Steel 303
9. Bolt Stainless Steel 304
10. Locknut Stainless Steel 303
11. Plung 1/4" NPT Carbon Steel
12. Plung 1/2" NPT Carbon Steel

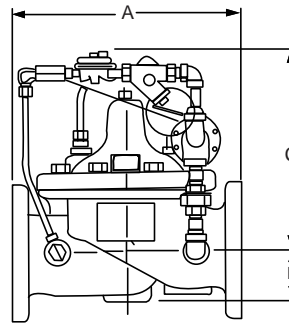
Part Number	size		OD mm	A		Weight	
	In.	mm		In.	mm	lbs	kg
VCG01-073	2 1/2	65	73	7,20	183	11	5
VCG01-076	3OD	65	76,1	7,20	183	11	5
VCG01-089	3	80	88,9	7,80	198	13	6
VCG01-114	4	100	114,3	8,58	218	20	9
VCG01-165	6 1/2OD	150	165,1	10,63	270	40	18
VCG01-168	6	150	168,3	10,63	270	40	18
VCG01-219	8	200	219,1	12,8	325	73	33

## Basınç Emniyet Vanası

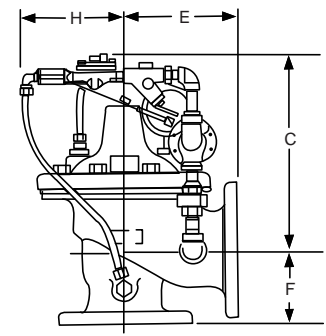
□ Relief Valve



Model 50BKG1 Globe



Model 2050BKG1 Angle

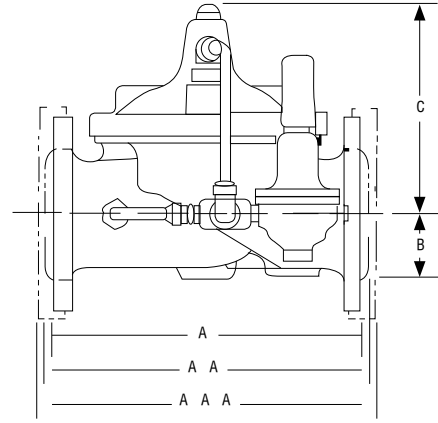


Valve Size (mm)	50	65	80	100	150	200	250	300
<b>Threaded Ends</b>	238	279	318	-	-	-	-	-
<b>A 150 Flanged</b>	238	279	305	381	508	645	756	864
300 Flanged	254	295	337	397	533	670	790	902
300 x 150	-	-	327	389	522	657	773	883
<b>B</b>	84	102	116	146	200	254	300	356
<b>C</b>	305	311	318	330	363	414	457	522
<b>D</b>	38	43	65	81	109	135	235	273
<b>Threaded Ends</b>	121	140	159	-	-	-	-	-
<b>E 150 Flanged</b>	121	140	152	191	254	324	378	432
300 Flanged	127	149	162	200	267	337	395	451
<b>Threaded Ends</b>	83	102	114	-	-	-	-	-
<b>F 150 Flanged</b>	83	102	102	127	152	203	219	349
300 Flanged	89	109	111	135	165	216	236	366
<b>G &amp; H</b>	152	170	109	200	216	248	337	362

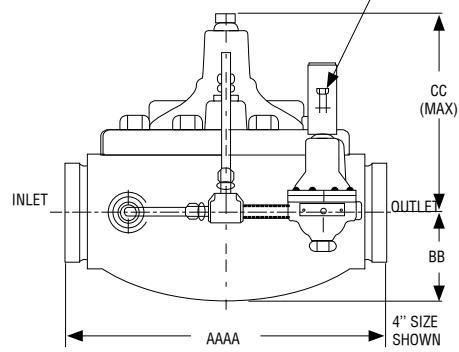
Selection Guidelines	
Flow Capacity Table	
Valve Size	Maximum Flow Rate (GPM of Water)
1 1/2"	160
2"	262
2 1/2"	373
3"	576
4"	992
6"	2251
8"	3900
10"	6150
When Ordering Please Specify	
1. Model Number 90-21	
2. Size	
3. Globe or Angle Pattern	
4. Main Valve Body and Cover Material	
5. Threaded, Flanged or Grooved	
6. Pressure Class	
7. Optional Epoxy Coating (specify with suffix "KC")	

## Basınç Düşürücü Vana

### □ Pressure Reducing Valve



PRESSURE REDUCING CONTROL ADJUSTMENT.  
 TURN THE ADJUSTING STEM CLOCKWISE TO INCREASE THE SETTING

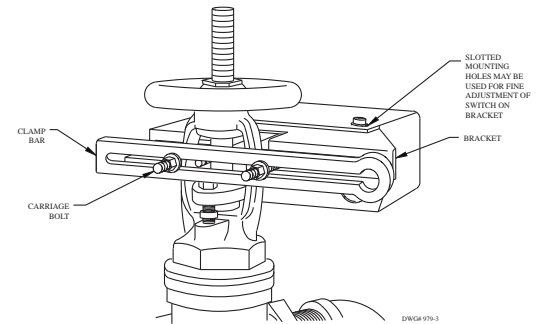
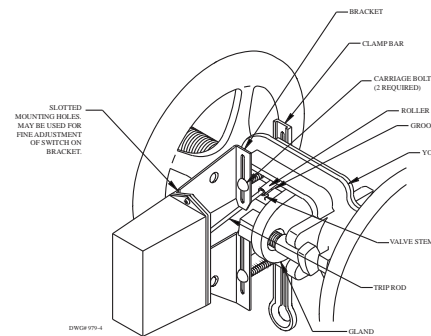
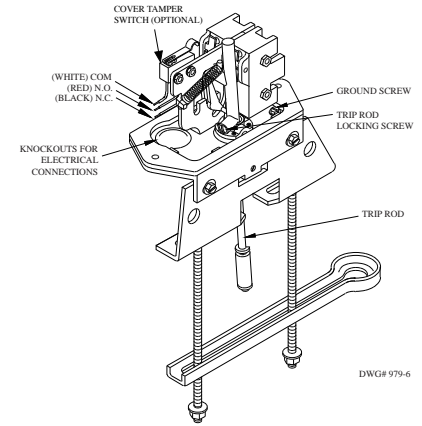
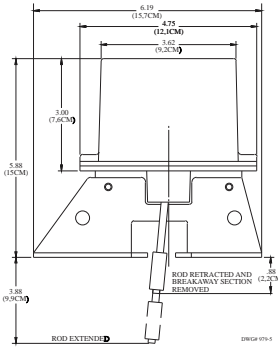


Specifications	
Sizes	Globe: 2" - 12" flanged Angle: 2" - 12" flanged
End Details	150 and 300 ANSI B16.42
Pressure Ratings	class - 175 psi Max. class - 300 psi Max. Water, to 180°F Max.
Materials	<b>Main Valve Body &amp; Cover</b> Ductile Iron ASTM A-536 Naval Bronze ASTM B61 Other Material Available <b>Standard Main Valve Trim:</b> Bronze Seat, Teflon Coated Stainless Steel Stem, Delrin Sleeved <b>Standard Pilot Control System:</b> Cast Bronze with Stainless Steel trim
Adjustment Range	Available in the following relief pressure ranges: 20-200 psi (150 Class) 100-300 psi (300 Class)
Optional	Protective epoxy resin coating of wetted surfaces of main valve cast iron components (UL listed HNFX EX2855)

VALVE SIZE (mm)	40	50	65	80	100	150	200	250
A THREADED	184	238	279	318	-	-	-	-
AA 150 ANSI	216	238	279	305	381	506	645	756
AAA 300 ANSI	229	254	295	337	397	533	670	270
AAAA GROOVED	216	228	279	318	381	508	645	-
B	28	38	43	65	81	109	135	235
BB GROOVED	52	54	73	6.00	4.13	6.00	184	-
C (MAX)	140	161	192	208	270	340	406	435
CC (MAX) GROOVED	104	127	175	165	223	281	369	-
D	71	84	102	116	146	200	254	300
DD GROOVED	71	84	102	116	146	200	254	-
E THREADED	83	121	140	159	-	-	-	-
EE 150 ANSI	102	121	140	152	191	254	324	378
EEE 300 ANSI	108	127	149	162	200	267	349	395
EEEE GROOVED	-	121	-	152	191	-	-	-
F THREADED	48	83	102	114	-	-	-	-
FF 150 ANSI	102	83	102	102	127	152	203	219
FFF 300 ANSI	108	89	109	111	135	165	216	236
FFFF GROOVED	-	121	-	114	127	-	-	-
G (MAX)	191	197	197	203	228	241	267	292
GG (MAX)	206	203	-	207	236	267	292	-

# OSY Süpervizör Anahtarı

## □ Valve Supervisory Switch



<b>Dimensions</b>	6.19" L x 2.25" W x 5.88" H	
	17.7cm L x 5.7cm W x 14.6cm H	
<b>Weigth</b>	2 IBS (.9 kg)	
<b>Enclosure</b>	Cover - Die - Cast	
	Finish - Red Spatter Enamel	
	Base - Die Cast Zinc	
	All parts have corrosion resistant finishes	
<b>·Cover Tamper</b>	Tamper resistant screws	
	Optional cover tamper kit available	
<b>Contact Ratings</b>	OSYSU-1: One set of SPDT (Form C)	
	OSYSU-2: Two sets of SPFT (Form C)	
	15.00 Amps at 125/250VAC	
	2.50 Amps at 30 VCD	
<b>Enviromental Limitations</b>	40°F to 140°F (-40°C to 60°C)	
	NEMA 4 and NEMA 6P Enclosure (IP67)	
	Indoor or outdoor use (Not for use in hazardous locations)	
<b>Conduit Entrances</b>	2 knockouts for 1/2" conduit provided	
<b>Service Use</b>	Automatic Sprinkler	NFPA-13
	One or two family dwelling	NFPA-13D
	Residential occupancy up to four stories	NFPA-13R
	National Fire Alarm Code	

# Bazı Referanslarımız

- Tav - Makedonya Üsküp Havaalanı
- Ağaoğlu İnşaat – My Town Ispartakule
- Ağaoğlu İnşaat – My Town Bahçelievler
- Avrupa Konutları Atakent 2 Şantiyesi
- İTÜ Maçka Kampüsü
- Beylikdüzü Solarkent Konut Projesi  
AYDINLI GRUP – İstanbul -2010
- Nestle – İlave Depo Binası – Bursa
- Renault – Lojistik Binası – Bursa
- Procter Gamble - Nijerya
- Marshall Boya (Akzo Nobel Boya Üretim Tes.) - Gebze
- M.S.B. ( Milli Savunma Bakanlığı ) Hava Savunma Okulu  
ve Eğitim Merkezi Komutanlığı - Çekmeköy
- Anadolu Şişecam Topkapı Fabrikası – Topkapı
- Marshall Boya (Akzo Nobel Boya Üretim Tes.) - Gebze
- Farplas - Gebze
- Philsa Faz III Projesi - Torbalı - İzmir
- İsdemir Benzol Tankları – İskenderun
- Kayalar Kimya Boya Üretim Tesisleri - İstanbul
- Renault – Üretim Tesisleri – Bursa
- Maya Center - Şişli / İstanbul
- Tepebaşı Müzesi - Taksim - İstanbul
- Koçtaş - Alemdar - İstanbul
- Tema Mağazacılık (L.C. Waikiki) - İkitelli - İstanbul
- Marshall Boya (Akzo Nobel Boya Üretim Tes.) - Gebze
- Sheraton Otel Genişleme - Ankara
- Philip Morris - Izhora / St Petersburg - Rusya
- Tei - Tusaş Motor Sanayi - Eskişehir
- AGT (Bakü – Ceyhan) Petrol Boru hattı Projesi  
Gürcistan ve Azerbaycan
- Ceylan Intercontinental - İstanbul
- Astana Havaalanı - Kazakistan
- Carrefour - Ankara
- Ahmet Rasim Paşa Yalısı (Ajia Otel) - İstanbul
- Philips Morris - Gll Genişleme - Almata - Kazakistan
- Metro Gross Market - Beylikdüzü - İstanbul
- Delphi Automotive - İzmir
- Samal Kulesi - Almata - Kazakistan
- Euro-Centrum - Varşova - Polonya
- Carrefour - Ankara
- Championsa - Fulya - İstanbul
- Tco - Atyrau - Kazakistan
- Kurksky Alışveriş Merkezi - Moskova - Rusya



- Tmmmo - İzmir
- Polat Tower Residence – İstanbul
- Kosifler - İstanbul
- Philsa (Philip Morris) Eğitim Merkezi - Torbalı - İzmir
- Sabah Yayıncılık - İstanbul
- Sabah Yayıncılık - Adana
- Sabah Yayıncılık - Antalya
- Yenikaramursel Alışveriş Merkezi - Şişli - İstanbul
- Conrad Hilton - İstanbul
- Arçelik - Sincan
- Dolmabahçe Sarayı - İstanbul
- Gazal - Gebze
- Erkunt Dökümhane - Sincan
- General Motors / Opel - Torbalı - İzmir
- Championsa - İstanbul
- Radisson Hotel - St Petersburg – Rusya
- LM Paketleme - Almaata - Kazakistan
- Philip Morris - Izhora / St Petersburg- Rusya
- Philip Morris - Almata - Kazakistan
- Türkiye İş Bankası Merkez Kulesi - İstanbul
- İncirlik Hava Üssü - Adana
- Alcatel - İstanbul
- Çarşamba Havaalanı - Samsun
- Colgate Palmolive - Gebze
- ABB - İstanbul
- Philip Morris - Krasnodar Topacprom 3RD Phase - Rusya
- R. J. Reynolds (JTI) Warehouse Project - Torbalı - İzmir
- Philsa (Phillip Morris) (Büyüme) - Torbalı - İzmir
- Philsa (Phillip Morris) Battery Plant - Torbalı - İzmir
- Talya Kongre Salonu - Antalya
- Ministry of Russian Foreign Affairs - Moskova - Rusya
- Tekfen - Uçak Hangarı - İstanbul
- Akaltan Hotel - Aşkabat - Türkmenistan
- Maksan - İstanbul
- Kar Yapı Business Centre - Eyüp - İstanbul
- Krasnodar Tobacprom First Phase (Philip Morris) - Rusya
- Packard Electric - General Motors - Bursa
- Bayer Türk - Gebze
- Çırağan Sarayı Oteli - İstanbul
- R. J. Reynolds Second Phase - İzmir
- Petrowsky Alışveriş Merkezi - Moskova
- Birleşik Alman İlaç Deposu - İstanbul
- Holiday Inn - İstanbul



Tav - Makedonya, Üsküp Havaalanı



Philip Morris - Kazakistan



İş Bankası, Kuleler



Sharaton Hotel, Ankara



İncirlik Hava Üssü



Dolmabahçe Sarayı



Philip Morris Rusya



Atatürk Havalimanı İstanbul

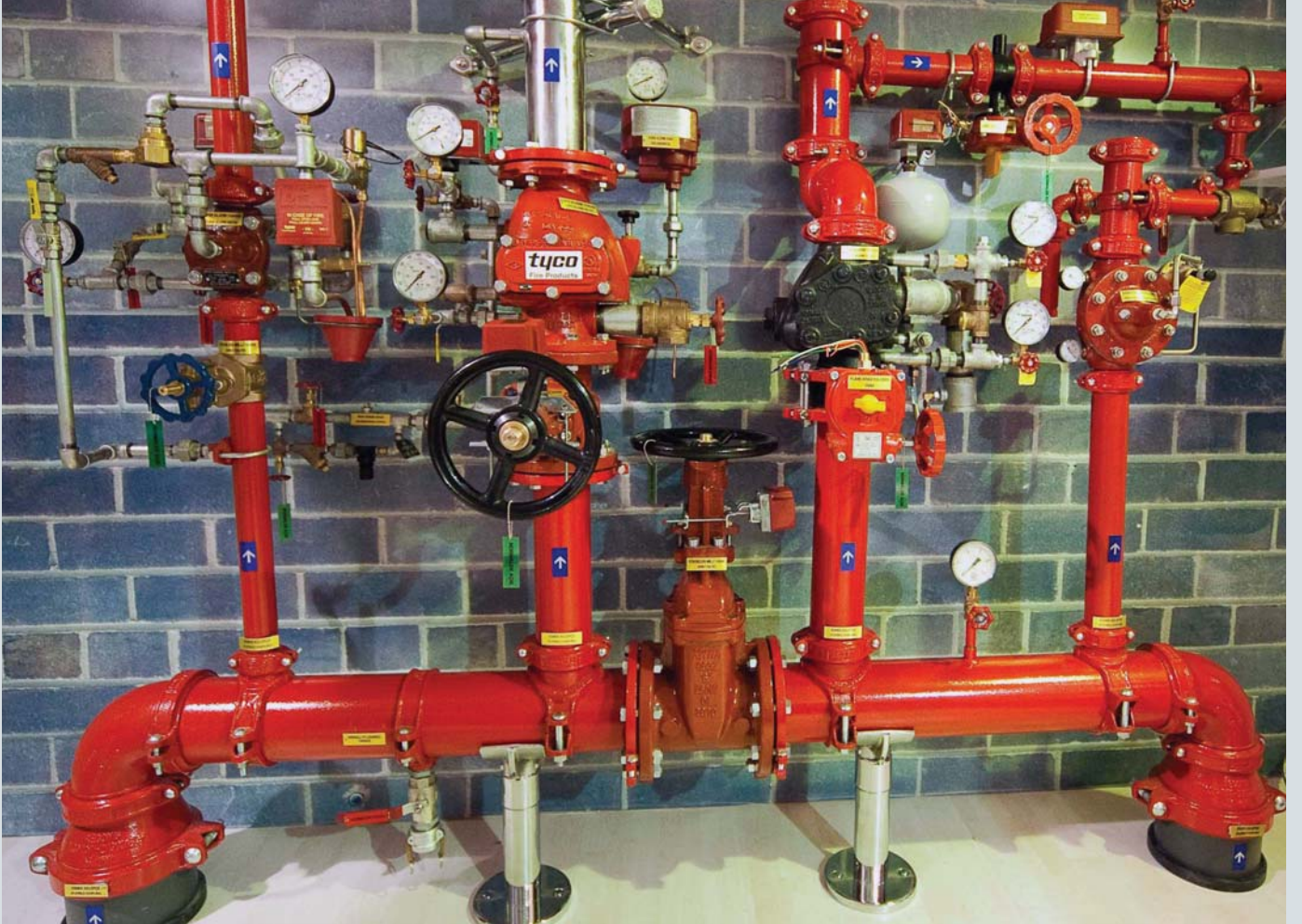


Eura Centrum Varşova



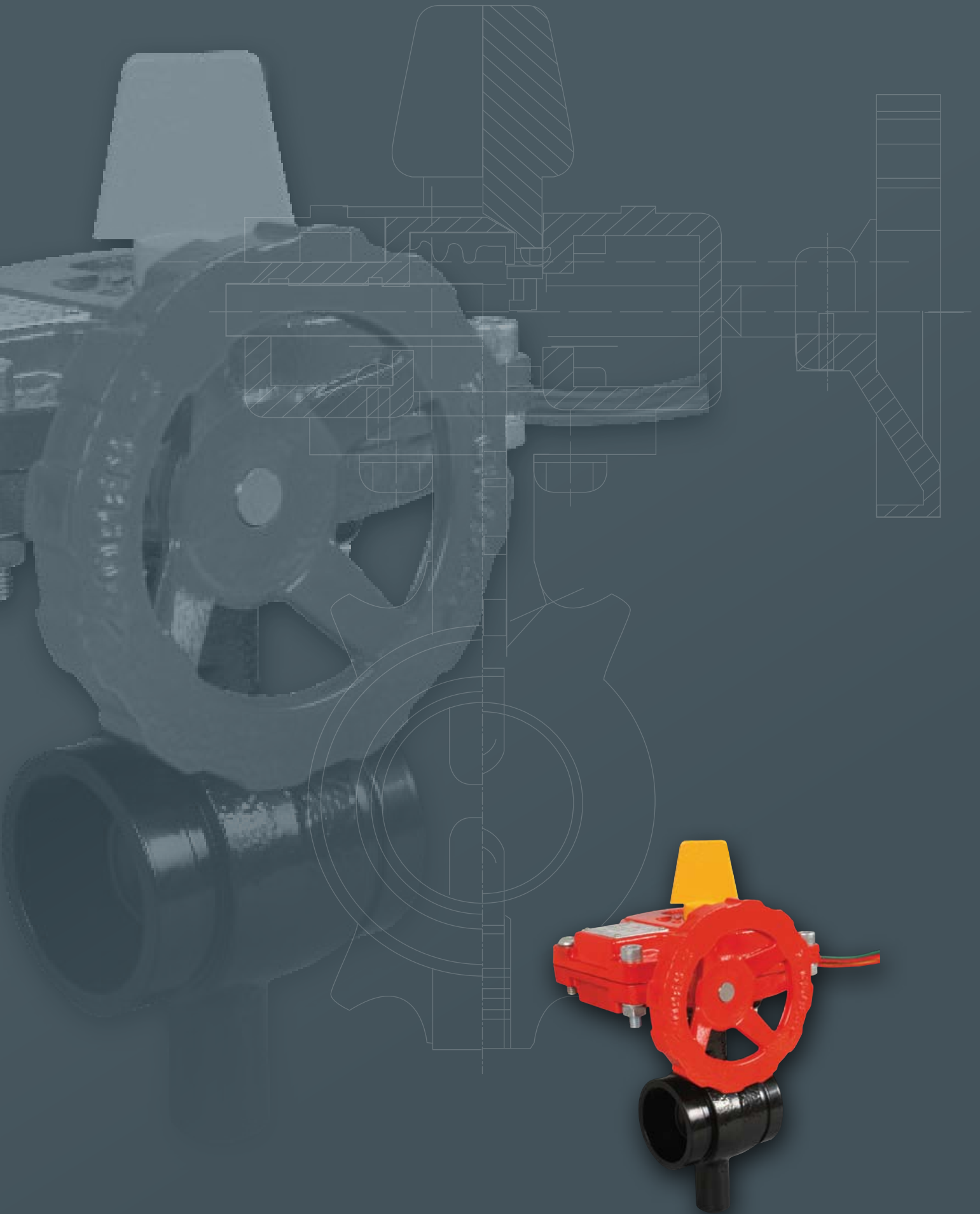
BMW Kosifler

# Faaliyet Alanlarımız



- SULU SÖNDÜRME SİSTEMLERİ
- KÖPÜKLÜ SÖNDÜRME SİSTEMLERİ
- GAZLI SÖNDÜRME SİSTEMLERİ
- DUMAN TAHLİYE SİSTEMLERİ
- ALGILAMA SİSTEMLERİ

- PASİF KORUMA SİSTEMLERİ
- 3D PROJELENDİRME VE DESTEK HİZMETLERİ
- DANIŞMANLIK VE BAKIM HİZMETLERİ
- MALZEME TEMİNİ VE STOKTAN SATIŞ





www.fireshop.com.tr

STOKTAN  
HEMEN  
TESLİM



**TEKNO YANGIN ve HAVALANDIRMA SİSTEMLERİ LTD. ŞTİ**

Acıbadem Cad. İbrahimağa Konutları A-2 Blok D.4

34718 Acıbadem, Kadıköy - İstanbul

Tel: 0216 327 8505 pbx Faks: 0216 327 87 43 - 428 81 98

info@teknoyangin.com.tr

www.teknoyangin.com.tr

www.fireshop.com.tr