



FEATURES

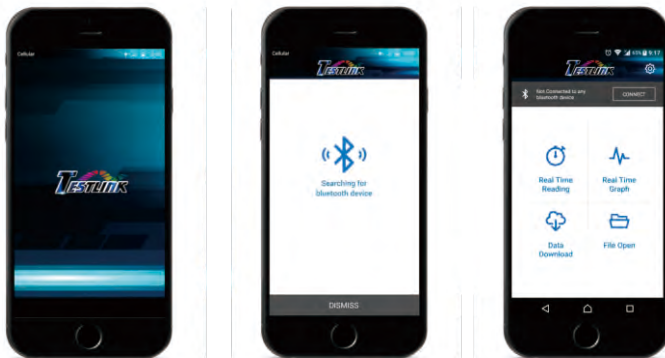
- Recall Function To Instantly Read-out Up To 100 Sets Manually Saved Data
- Min/Max/Avg Recording Of All Channels USB Interface
- Large Backlit LCD Shows All Channels On Display
- Measures K, J, E, T, N, R, S Type Thermocouples
- Temperature Alarm Function Data Hold Function
- Datalogging Up To 32,000 Points Each Channel
- Dew Point And Wet Bulb Measurement
- Adjustable Auto Power Off Time Setting
- Fast Response With High Accuracy
- Interchangeable Digital Probe
- PC Software Included
- Bluetooth Capability
- Unit °C, °F, K, RH



NEW!



LED Back Light



APP available for iOS & Android system

SPECIFICATIONS

Measurement Range:

Probe: 0%~100%RH; -20°C~60°C, -4°F~140°F
 Thermocouple: -200°C~1370°C; -328°F~2498°F

Accuracy:

Probe: ±2.5%RH; ±0.8°C; ±1.5°F
 Thermocouple: ±0.1%rdg+0.7°C; ±0.1%rdg+1.4°F

Resolution:

0.1%RH; 0.1°C; 0.1°F; 0.1K

Input Protection: 30Vrms Maximum

Battery Type: 1.5V AAA size Battery x 4 pcs

Operating Condition: 0°C to 50°C(<90%RH)

Storage Condition: -20°C to 60°C(<75%RH)

Dimensions: 187 x 75 x 29 (mm)

Accessories:

User's manual, micro USB cable, battery, Windows software, carrying case, K type bead probe x 1 pc, BT-01 Bluetooth adapter.



CENTER®

CENTER TECHNOLOGY CORP.

4F, No.415, Jung-Jeng Road, Shu-Lin Dist.,

New Taipei City 238, Taiwan

TEL: 886-2-26763926 E-Mail : center@centertek.com

FAX: 886-2-26763925 http : //www.centertek.com

* The specifications and other information in this catalogue are subject to change without prior notice.

Distributed by:

CENTER 317 Humidity Temperature Meter (Dew Point, Wet Bulb)

CENTER 317 is a 2.5% accuracy humidity temperature meter. The "Pull Up sensor protector" protects the unit while carrying it around. The backlight LCD helps the operator to get reading in dark environment. It can be checked or calibrated with our optional calibration cells.



FEATURES:

- Dew Point And Wet Bulb Temperature Measurement
- Fast Response
- Auto Shut Off For Battery Saving
- Max/Min Function
- Dual Displays: Primary Display For Humidity; Secondary Displays For Temperature



SPECIFICATIONS

Range	Temperature: -20 ~ 60°C; -4 ~ 140°F; Humidity: 0 ~ 99%RH Dew Point Temperature: -20°C ~ 60°C; -4 ~ 140°F
Accuracy	±0.8°C, 1.6°F ±2.5%RH
Resolution	0.1°C; 0.1°F; 0.1%RH
Operation Temp	Temperature: -20°C ~ 60°C; Humidity: 0°C ~ 55°C
Storage Temp	-10°C ~ 60°C (< 70%RH)
Battery	1.5V, size AA battery x 4
Dimensions	210x65x43 mm
Weight	Approx.265g

CENTER 31 Hygro Thermometer (With Alarm)

CENTER 31 is our proposed full time environmental monitoring system. Its detachable probe and can be verified or calibrated through optional signal extending cable and our standard calibration cell. Monitoring limit can be set on this unit. Once the environmental condition is out of the setup condition, the unit will send the warning with buzzing and blinking display.



FEATURES:

- Large, Easy-to-read Dual LCD Displays Humidity And Temperature
- 3%RH Humidity Accuracy
- Calibration Available On Site
- Desk Or Wall Mount
- Max/Min Value Monitor
- Audible And Visual Alarms, With Adjustable Set Points, Warns If Limits Are Exceeded



SPECIFICATIONS

Range	Temperature: -20 ~ 60°C; -4 ~ 140°F; Humidity: 0 ~ 100%RH Dew Point Temperature: -20°C ~ 60°C; -4 ~ 140°F
Accuracy	±0.8°C, 1.5°F ±3%RH
Resolution	0.1°C; 0.1°F; 0.1%RH
Operation Temp	Temperature: -20°C ~ 60°C; Humidity: 0°C ~ 55°C
Storage Temp	-10°C ~ 70°C (0 ~ 70%RH)
Battery	1.5V, size AAA battery x 4
Dimensions	140x105x26 mm
Weight	Approx.265g



CENTER 318 Datalogger Hygro Thermometer (PC Interface)

CENTER 318 is our new hygro thermometer. Its detachable probe can be easily extended with option extending cable or the operator can directly connect the probe to the base unit to form standard humidity tester. It is also a data logger with 16,000 data memory. With the stand on the unit, it is easy to set to anywhere for data collecting.



LED Back Light



FEATURES:

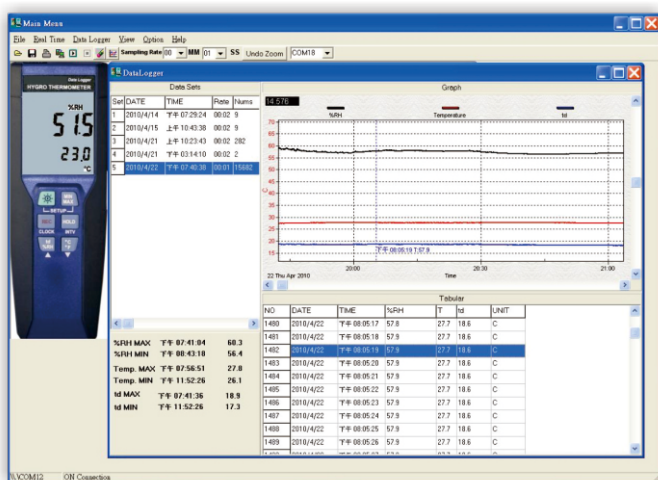
- Interchangeable Digital Probes
- Thermistor Sensor For Temperature Measurement, Fast Response Time
- Dual Display
- Dew Point Measurement
- PC Interface
- 16,000 Records Data Logger
- Auto Shut Off For Battery Saving
- Extending Cable Available
- Tilt Stand



SPECIFICATIONS

Sensor	Electronic capacitance polymer film sensor/NTC
Range	Temperature: -20 ~ 60°C; -4 ~ 140°F; Humidity: 0 ~ 100%RH
Accuracy	±0.8°C, 1.5°F ±2.0%RH
Resolution	0.1°C; 0.1°F; 0.1%RH
Response Time(@t90)	Humidity: 60 sec. ; Temperature: 10 sec
Operation Temp	0°C ~ 40°C (< 80%RH)
Storage Temp	-10°C ~ 60°C (< 70%RH)
Parameters Displayed	Relative humidity, temperature and dew point.
Battery	9V battery
Dimensions	Meter: 185x65x36 mm ; Probe: 94x15mm Dia
Weight	Approx.285g

● WINDOWS BASED SOFTWARE INTERFACE



Option:
(TL-002) Probe Extending Cable
(CENTER 33% & 75%RH) Humidity Cell

SOFTWARE
TestLink SE-318

CENTER 315 Humidity Temperature Meter (Compact Size)



CENTER 315/316 are small size humidity temperature meters. With the help of the innovative sensor, the response time is 30 sec and the accuracy is better than 3%. With the optional calibration cell the operator can also perform the calibration by themselves on site regularly.

FEATURES:

- Fast Response Time
- Auto Shut Off For Battery Saving
- REL Function
- Max/Min Function
- Dual Displays:
Primary Display For Humidity;
Secondary Displays For
Temperature



SPECIFICATIONS

Range	Temperature: -20 ~ 60°C; -4 ~ 140°F; Humidity: 0 ~ 100%RH
Accuracy	±0.8°C, 1.6°F ±3%RH
Resolution	0.1°C; 0.1°F; 0.1%RH
Operation Temp	0°C ~ 40°C (< 80%RH)
Storage Temp	-10°C ~ 60°C (< 70%RH)
Battery	9V battery
Dimensions	240x54x34 mm
Weight	Approx.220g

CENTER 316 Humidity Temperature Meter (Compact Size, Dew Point, Wet Bulb)



FEATURES:

- Dew Point And Wet Bulb
Temperature Measurement
- Fast Response Time
- Auto Shut Off For Battery Saving
- Max/Min Function
- Dual Displays:
Primary Display For Humidity;
Secondary Displays For
Temperature



SPECIFICATIONS

Range	Temperature: -20 ~ 60°C; -4 ~ 140°F; Humidity: 0 ~ 100%RH
Accuracy	±0.8°C, 1.6°F ±3%RH
Resolution	0.1°C; 0.1°F; 0.1%RH
Operation Temp	0°C ~ 40°C (< 80%RH)
Storage Temp	-10°C ~ 60°C (< 70%RH)
Battery	9V battery
Dimensions	240x54x34 mm
Weight	Approx.220g

CENTER 310/311 Humidity Temperature Meter (PC Interface)

CENTER 310 is our standard humidity temperature meter. By applying high performance sensor, the tester has rapid response and long time stability.

CENTER 311 had also included a thermocouple input that can use normal thermocouple probes.



FEATURES:

- Dual Input (311)
- Triple Display
- PC Interface
- Timer Function (310)
- REL Function (311)
- Auto Power Off
- Hold Function
- Max/Min Function
- Resolution 0.1°C, 0.1°F, 0.1%RH

311 Dual Input Hygrometer



SPECIFICATIONS

Range & Accuracy	Temperature: -20 ~ 60°C.....±0.7°C -4 ~ 140°F.....±1.4°F (K-Type): -200 ~ 1370°C.....±0.3%rdg + 1°C -328 ~ 2498°F.....±0.3%rdg + 2°F
Humidity	0 ~ 100%RH.....±2.5%RH
Input Protection	60V DC or 24Vrms AC Maximun
Battery	9V battery
Dimensions	Meter: 186x64x30 mm Probe: 190(L)x15(Dia) mm
Weight	Approx.320g

CENTER 313/314 Datalogger Humidity Temperature Meter (PC Interface)

CENTER 313/314 are data loggers enhanced from 310/311. We have built memory for 16,000 records in these testers. The sampling period is programmable and there is a real time clock in the tester. The Windows based software that comes with each unit is very easy to operate. The users only have to connect the cable and call the program and no extra setup is needed.



FEATURES:

- Dual Input (314)
- Triple Display (314)
- PC Interface
- 16,000 Records Data Logger Per Channel
- Auto Power Off
- Clock Function
- Hold Function
- Max/Min Function
- Resolution 0.1°C, 0.1°F, 0.1%RH

314 Dual Input Datalogger Hygrometer



SPECIFICATIONS

Range & Accuracy	Temperature: -20 ~ 60°C.....±0.7°C -4 ~ 140°F.....±1.4°F (K-Type): -200 ~ 1370°C.....±0.3%rdg + 1°C -328 ~ 2498°F.....±0.3%rdg + 2°F
Humidity	0 ~ 100%RH.....±2.5%RH
Input Protection	60V DC or 24Vrms AC Maximun
Battery	9V battery
Dimensions	Meter: 186x64x30 mm Probe: 190(L)x15(Dia) mm
Weight	Approx.320g

The comparison table of Humidity Temperature Meters

FUNCTION TABLE

MODEL	CENTER 310	CENTER 311	CENTER 313	CENTER 314	CENTER 315	CENTER 316	CENTER 317	CENTER 31	CENTER 318
Input Channel	Single	Dual	Single	Dual	Single	Single	Single	Single	Single
K Type Sensor		●		●					●
PC Interface	●	●	●	●					●
Data Logger			●	●					●
REL Function		●			●				
Internal Clock Function			●	●					●
TIMER Function	●		●	●					
Data Hold Function	●	●	●	●	●	●	●		●
MAX/MIN Function	●	●	●	●	●	●	●	●	●
REC Fuction			●	●					●
Dew Point & Wet Bulb						●	●	Dew Point	Dew Point
Alarm								●	
INTV Function			●	●					●
Auto Power Off	●	●	●	●	●	●	●		●
Back Light							●		●
Tilt Stand								●	●

STANDARD ACCESSORIES

MODEL	CENTER 310	CENTER 311	CENTER 313	CENTER 314	CENTER 315	CENTER 316	CENTER 317	CENTER 31	CENTER 318
Battery	●	●	●	●	●	●	●	●	●
Operation Manual	●	●	●	●	●	●	●	●	●
Carrying Case	●	●	●	●			●		●
Thermocouple Probe		TP-K01 x 1PC		TP-K01 x 1PC					
USB Cable	Option	Option	Option	Option					●
RS-232 Cable	Option	Option	●	●					
Software	Option	Option	●	●					●
RP-31 (Humidity Probe)								●	Option
RP-32 (Humidity Probe)								Option	●
TL-002 (Probe Cxtending Cable)								Option	Option

