

From USD 1405



Yoga & Snorkeling Retreat

Maldives Liveaboard · MV Princess Rani

Trip Highlights

- Daily sunrise & sunset yoga on deck
- Guided snorkeling on pristine reefs
- Island hopping & sandbank picnics
- Full board meals (tea, coffee & water)
- Air-conditioned cabins with en-suite
- Manta and whaleshark excursion

Included

- 7 nights, double occupancy
- Full board: breakfast, lunch, dinner
- Drinking water, tea & coffee
- Island visits & Male' tour on request
- Airport meet & greet + transfers
- Taxes incl. (TGST 17%) & Green Tax, Tips (USD 15 per day per person)

Not Included

- International flights
- Soft & alcoholic drinks
- Rental equipment

Season

May - October 2026

Every week: Saturday - Saturday

Min group size: 15, max 22 guests,

Book & Contact

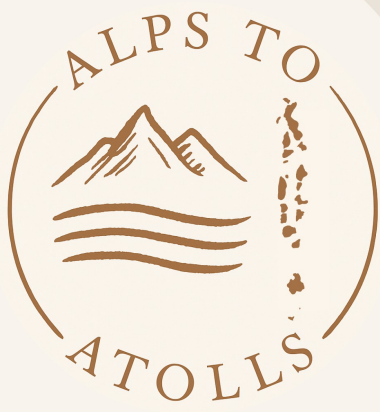
Hafil Hassan

alps.to.atolls@gmail.com

+43 676 4898029

Reserve





Route - Best of Maldives

Yoga Snorkeling Retreat · MV Princess Rani

From USD 1405

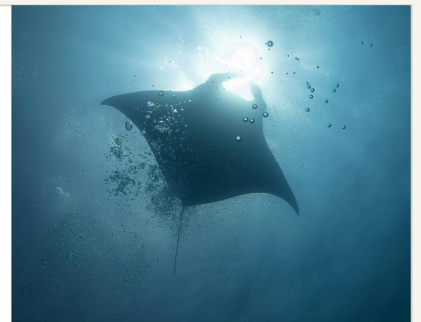
North Malé Atoll

Known for its clear lagoons and vibrant reef gardens, this atoll offers relaxed snorkeling over shallow coral reefs teeming with reef fish, turtles, and the occasional reef shark.



South Malé Atoll

Famous for its colorful soft corals and abundant marine life, including eagle rays, reef sharks, and large schools of fish.



Vaavu Atoll

Nicknamed the aquarium for its rich biodiversity. Snorkelers may encounter nurse sharks, turtles, and schools of jacks, as well as enjoy sandbanks and turquoise lagoons.



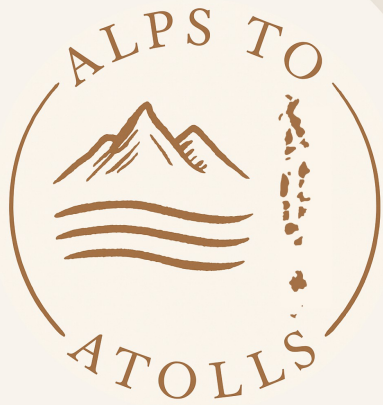
South and North Ari Atoll

World-renowned for year-round whale shark encounters. Known for spectacular thilas (submerged pinnacles). It offers multiple manta cleaning stations



This is a wild ocean, not an aquarium — conditions and unpredictable wildlife are natural and unpredictable. While we plan each route for the best chances, sighting of specific species cannot be guaranteed. Weather can also influence our itinerary, especially during July and August when conditions may be more changeable.

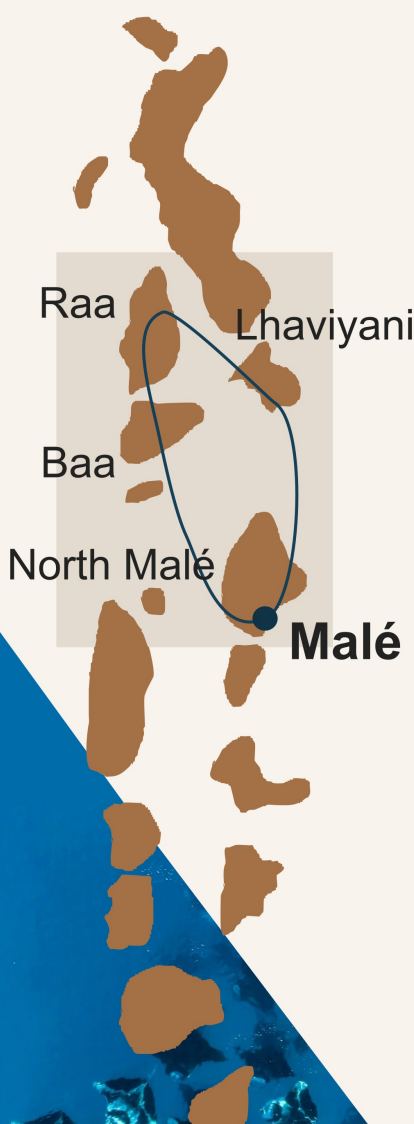




Route 2: Hanifaru Bay

UNESCO Biosphere Reserve

From USD 1575



North Malé Atoll
Known for its clear lagoons and vibrant reef gardens, this atoll offers relaxed snorkeling over shallow coral reefs teeming with reef fish, turtles, and the occasional reef shark.



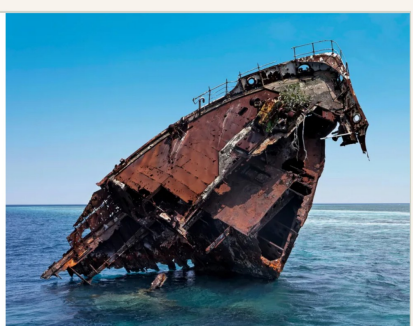
Baa Atoll
• Famous **Hanifaru Bay**, one of the best places to see manta ray and whale shark gatherings.
• Diverse reef life: turtles, reef sharks, and thriving coral ecosystems.



Raa Atoll
• Remote and less frequented, with untouched reefs and excellent visibility.
• Home to schooling fish, turtles, and occasional manta sightings.

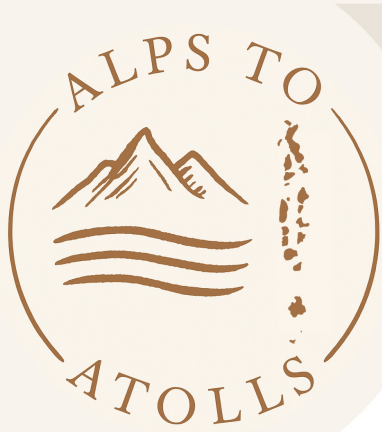


Lhaviyani Atoll
• Known for famous dive site "Shipyard": two 40 year-old wrecks which are covered with a variety of soft and hard corals.
•



This is a wild ocean, not an aquarium — conditions and unpredictable. wildlife are natural and unpredictable. While we plan each route for the best chances, sighting of specific species cannot be guaranteed. Weather can also influence our itinerary, especially during July and August when conditions may be more changeable.





PRINCESS RANI

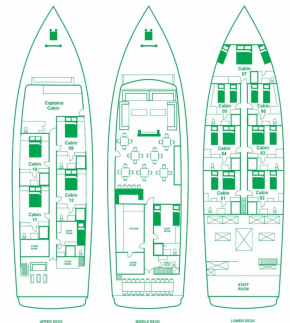
Introducing the boat

A 33.87m x 9.86m wooden-hulled safari yacht, Princess Rani combines comfort, space, and Maldivian charm. Purpose-built for diving, snorkeling, surfing, and yoga trips, she carries a maximum of 27 guests with ease.



Highlights

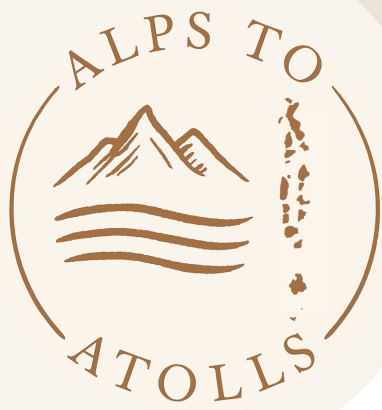
- Spacious dhoni (dive tender) for all diving/snorkeling activities.
- Experienced crew with years of service to guests from around the world.
- Cruising speed: 9 knots (max 11 knots) with modern Doosan Daewoo engine.
- Freshwater maker (50 tons/day), two 50kW generators.



Accommodation

- 1 Family Cabin — sleeps 4 (double + 2 singles), ensuite.
- 4 Triple Cabins — double + single bed, sleeps 3, ensuite.
- 2 Twin Cabins — two single beds, sleeps 2, ensuite.
- 4 Double Cabins — double bed, sleeps 2, ensuite.
- All cabins have individually controlled air conditioning and private bathrooms.





Terms & Conditions

MV Princess Rani

- The rate is calculated based on one free space above 20 pax (a group leader, guide, or a photographer)
- To confirm the booking minimum of 15 paid passengers is required.
- Check-in time from 12:00 hrs. / check out at 9:00 hrs.
- The prices quoted are non-commissionable
- Individual rates are quoted per person per night on a double/twin sharing basis
- A single occupancy supplement of 70% will be charged if the guest is not sharing with another paid guest.
- Maximum number of guests: 22 pax
- In special condition cases, an additional guest can be accommodated in shared triple rooms. An extra charge will be applied for each extra guest as mentioned above.

Sailing Hours and Embarkation/Disembarkation

The maximum sailing hours per day are 4 - 5 hours, and the cruise will not sail between 1700 hrs

Booking Conditions

- A 50% non-refundable deposit to confirm the reservation is to be paid within 7 days of the invoice receipt.
- Balance is due 45 days before the arrival.
- If booking is made less than 45 days before arrival, 100% to be paid within 7 days of receipt of the invoice to confirm the booking.
- Please indicate the client's name and dates of your preferred trip in the payment reference when making remittances.
- CANCELLATION FEES: 50% deposit is not refundable, 45 days before arrival: 100%
- USD 30 will be added to each transaction of an invoice raised as an inward bank handling fee.
- Late check-out charges will be applied at 50% of the rate above

Information Needed for Booking

- Full name of the guests as they appear in the passport with passport number
- Nationality and Date of birth of the guests.
- Flight details, both arrival and departure flights. If you are staying in a resort/ hotel the night before your cruise, please provide us with the name of the resort or hotel so we can arrange the meeting at Male's airport.
- Special dietary requirements

