

# CDS10-EC4

## Smart Gas Sensor Module

### Datasheet

## » Overview

### Easy solution for gas detection

The CDS10 Gas Sensor Module is an intelligent gas sensor module from EC Sense with a two wire 4-20 mA and RS485 Modbus-RTU output signal, where one of the two signals can be selected. The module utilizes a smart microprocessor with high-reliability Electrochemical Gas Sensing Technology and intelligent algorithm calculation. The CDS10 is a smart solution that combines temperature and humidity in one sensor module for industrial safety applications.

The CDS10 Gas Sensor Module is suitable for indoor and outdoor environments. It detects gas, temperature and humidity and easily receives all data simultaneously. The changing state of gas is closely related to temperature and humidity, for which this combination of the CDS10 Gas Sensor Module provides a professional solution with a RS485 and temperature and humidity signal output.

The intelligent Gas Sensor Module provides a self-test which evaluates the sensor performance without a gas measurement. Therefore, it is the perfect solution for smart home and IoT applications. The data is put out through the output signal or RS485 transmission command, which makes it easy and convenient to determine the right time to perform maintenance and replacement.

Each CDS10 Sensor Module has been professionally calibrated with the gas. It can be instantly used without prior warm-up time and the calibration information is stored in the flash chip. There is a calibration software from EC Sense in case a recalibration with the RS485 output is required or the 4-20 mA output signal needs to be corrected.

The CDS10 Gas Sensor Module has the standard 4-20 mA two-wire or RS485 Modbus-RTU output signal that allows for quick instrument and system setup or connection to display, DCS, PLC and other systems.

## » Key Features

- ☞ 4-20 mA standard two-wire and RS485 Modbus-RTU output, 24V DC power supply
- ☞ Detects single gas + temperature and humidity at the same time
- ☞ With calibration, sensor performance and life-testing output
- ☞ Fast signal stability time at power on
- ☞ Suitable for indoor and outdoor environments, sensor can work in -40 °C to +55 °C
- ☞ Long lifetime, anti-poisoning
- ☞ Response time is fast and has a stable zero point without drift, anti-electromagnetic interference ability
- ☞ Integrated safety protection enables use in potentially explosive environments
- ☞ Electronic circuit boards have a dust and corrosion resistant coating
- ☞ CE EN61326-1:2013, EMI, RoHS approved



## » Applications

- ☞ Industrial Gas Safety Monitoring
- ☞ Industrial Process Gas Monitoring
- ☞ Air Exchange System and Air Purifier
- ☞ Food Storage Insecticides Monitoring
- ☞ Wastewater Treatment, Garbage Disposal, Biogas Safety Monitoring
- ☞ Medical & Health Care
- ☞ Semiconductor Gas Monitoring
- ☞ Transformer Failure and Power Chamber Environment Monitoring
- ☞ Warehouse Logistics Environment Monitoring



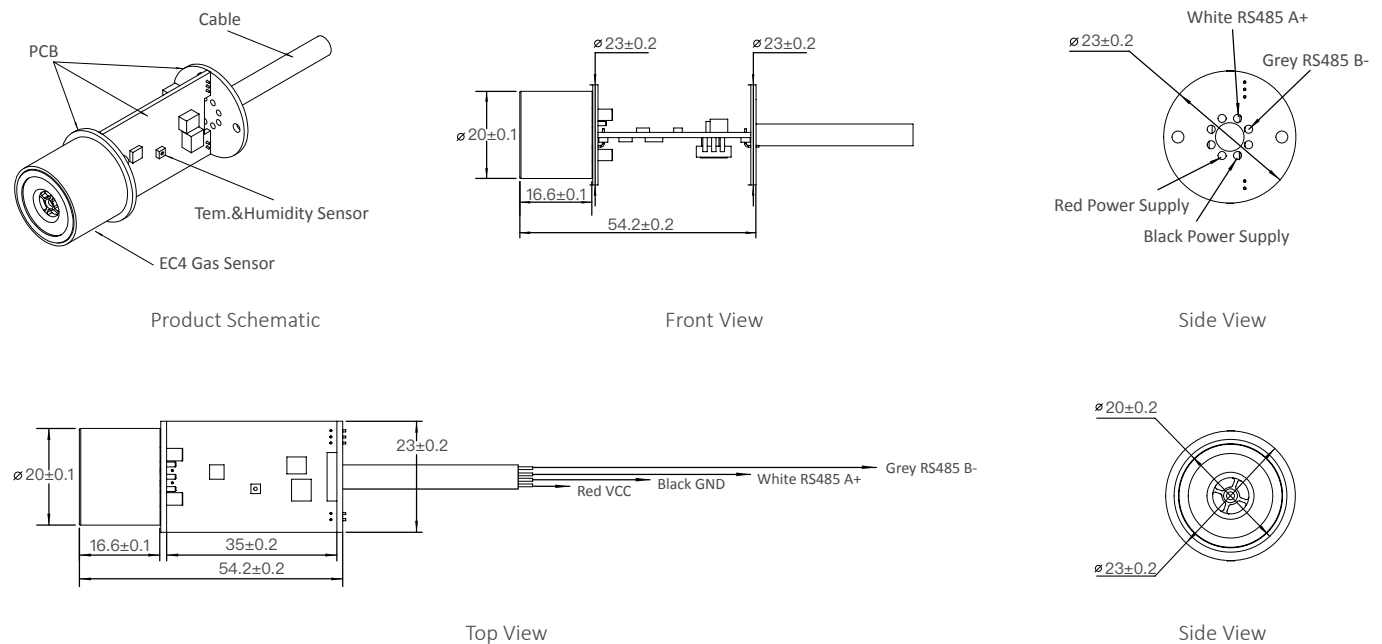
## » Principle

The CDS10 Sensor Module is a durable product. It converts the original small current signals of the gas sensors into a standard 4-20 mA or RS485 Modbus-RTU output through a digital circuit.

The Sensor Module uses the Electrochemical Sensing Technology. It employs a three-electrode arrangement- the working, the counter and the reference electrodes- in which concentration measurements can be performed continuously and the sensor operates at a fixed potential. The gas of interest (target gas) diffuses through a diffusion barrier, like a capillary, into the cell to the working electrode, where an electrochemical reaction takes place. There are oxidation and reduction reactions. The current flowing through the cell is direct proportional to the concentration of the target gas. A reference electrode keeps the potential constant together with a potentiostat.

## » Mechanical Diagram

CDS10-EC4 Smart Gas Module Mechanical Diagram unit: mm



## » Technology Specifications

### Gas Sensor Specifications

|                        |                                    |
|------------------------|------------------------------------|
| Principle              | Electrochemical Sensing Technology |
| Accuracy               | $\pm 5\%$ (Measurement value)      |
| Repeatability          | $< 2\%$                            |
| Long-Term Drift        | $< 5\%$ /year                      |
| Sensor Life Expectancy | $> 3$ years                        |
| Warranty               | 12 months                          |

**Temperature & Relative Humidity Sensor Specification (Inside housing)**

| Parameters  | Range            | Resolution | Accuracy | Response Time      | Long-Term Drift |
|-------------|------------------|------------|----------|--------------------|-----------------|
| Temperature | -40 °C to +85 °C | 0.01 °C    | ± 0.2 °C | < 5s to 30s @ t63% | < 0.02 °C/year  |
| Humidity    | 0-100% RH        | 0.01% RH   | ± 2% RH  | 8s @ t63%          | < 0.25% RH/year |

Note: This parameter cannot be obtained when the 4-20 mA output is selected. It is only applicable to the RS485 output.

**Electrical Parameters**

|                         |  |
|-------------------------|--|
| Output Signal Interface | 4-20 mA two-wires (Only gas sensor output, without Temperature and Humidity)<br>Or RS485 Modbus-RTU (Gas, with temperature and humidity sensor signal output)  |
| Fault Output            | 3.5 mA Fault Signal: Sensor signal is weak<br>3 mA Fault Signal: Sensor failure or sensor disconnection<br>RS485 Modbus-RTU output with sensor life and performance detection and early sensor failure warning |
| Supply Voltage          | 12 to 24V DC   |
| Supply Current          | 3 to 22 mA   |
| Power Consumption       | < 0.6 W  |
| Maximum Loop Resistance | < 500Ω @ 24V DC  |

**Environmental Parameters**

|                       |                                       |
|-----------------------|---------------------------------------|
| Operating Temperature | Sensor can work from -40 °C to +55 °C |
| Operating Humidity    | 15-95% RH non-condensing              |
| Working Pressure      | Air pressure ± 10 %                   |
| Storage Temperature   | 0 °C to 20 °C                         |

**Mechanical Parameters**

|                    |   |
|--------------------|---|
| Size               | 542 x 23 mm   |
| Power Cable Length | 1 m   |
| Weight             | 37.99 g   |
| Warranty           | 12 months   |
|                    | Red: VCC    Black: GND    White: RS485 A+    Grey: RS485 B- |

**Certification**

|   |
|---|
| Ex ia IIC Ga Intrinsic safety (certificated Temperature T6 -40 °C to + 55 °C) |
| CE Certificated EN61326-1:2013, EMC, 2014/30/EU                               |

## » Order Information

| Product                               | Gas Formula      | Partnumber                            | Range      | Resolution | Response Time |
|---------------------------------------|------------------|---------------------------------------|------------|------------|---------------|
| Smart Bromine Sensor Module           | Br <sub>2</sub>  | 04-CDS10-EC4-Br <sub>2</sub> -1-01    | 0-1 ppm    | 0.001 ppm  | T90 < 60 s    |
| Smart Chlorine Sensor Module          | Cl <sub>2</sub>  | 04-CDS10-EC4-Cl <sub>2</sub> -5-01    | 0-5 ppm    | 0.001 ppm  | T90 < 60 s    |
|                                       |                  | 04-CDS10-EC4-Cl <sub>2</sub> -50-01   | 0-50 ppm   | 0.01 ppm   | T90 < 60 s    |
| Smart Chlorine Dioxide Sensor Module  | ClO <sub>2</sub> | 04-CDS10-EC4-ClO <sub>2</sub> -5-01   | 0-5 ppm    | 0.001 ppm  | T90 < 60 s    |
| Smart Fluoride Sensor Module          | F <sub>2</sub>   | 04-CDS10-EC4-F <sub>2</sub> -5-01     | 0-5 ppm    | 0.001 ppm  | T90 < 60 s    |
| Smart Hydrogen Chloride Sensor Module | HCl              | 04-CDS10-EC4-HCl-30-01                | 0-30 ppm   | 0.001 ppm  | T90 < 60 s    |
| Smart Hydrogen Fluoride Sensor Module | HF               | 04-CDS10-EC4-HF-10-01                 | 0-10 ppm   | 0.001 ppm  | T90 < 60 s    |
| Smart Ammonia Sensor Module           | NH <sub>3</sub>  | 04-CDS10-EC4-NH <sub>3</sub> -100-01  | 0-100 ppm  | 0.01 ppm   | T90 < 60 s    |
|                                       |                  | 04-CDS10-EC4-NH <sub>3</sub> -500-01  | 0-500 ppm  | 0.1 ppm    | T90 < 60 s    |
|                                       |                  | 04-CDS10-EC4-NH <sub>3</sub> -1000-01 | 0-1000 ppm | 0.1 ppm    | T90 < 60 s    |

### Disclaimer

The EC Sense performance data stated above is based on data obtained under test conditions using the EC Sense gas distribution system and AQS test software. In the interest of continuous product improvement, EC Sense reserves the right to change design features and specifications without notice. We are not responsible for any loss, injury or damage caused by this. EC Sense assumes no responsibility for any indirect loss, injury or damage resulting from the use of this document, the information contained therein or any omissions or errors herein. This document does not constitute an offer to sell. The data it contains are for informational purposes only and cannot be considered a guarantee. Any use of the given data must be evaluated and determined by the user to comply with federal, state and local laws and regulations. All specifications outlined are subject to change without notice.

### Warning

EC Sense sensors are designed for use in a variety of environmental conditions. However, due to the principles and characteristics of electrochemical sensors and to ensure normal use, users must strictly follow this article during storage, assembly and operation of the module. General-purpose PCB circuit board application methods and illegal applications or violation of the application will not be covered by the warranty. Although our products are highly reliable, we recommend checking the module's response to the target gas prior to utilization to ensure on-site use. At the end of the products service life, please do not discard any electronics in the domestic waste, instead follow the local governments electronic waste recycling regulations for disposal.



**Business Centre  
Europe and the Rest of the World**

EC Sense GmbH  
Wangener Weg 3  
82069 Hohenschäftlarn, Germany  
Tel: +49(0)8178-99992-10 Fax: +49(0)8178-99992-11  
Email: [office@ecsense.com](mailto:office@ecsense.com)  
[www.ecsense.com](http://www.ecsense.com)

**Business Centre  
Asia**

Ningbo AQSystems Technology Co., Ltd.  
6 Building, Zhong Wu Technology Park No.228,  
Jin Gu North Road, Yinzhou District NingBo,  
Zhejiang Province, P.R. China Post Code: 315100  
Tel: +86(0)574 88097236, 88096372  
Email: [info@aq-s-de.com](mailto:info@aq-s-de.com)  
[www.ecsense.cn](http://www.ecsense.cn)