

# M-AASHIYANA WELFARE FOUNDATION



# OVERVIEW

Our Vision

Our Mission

Programs and Initiatives

MAWF Global Assembly

MAWF Global Council

MAWF Global Insight

MAWF Legacy Wall

Partnerships Across Sectors

Upcoming Events

Contact information

# Our Vision

**M-Aashiyana** envisions a compassionate global family where individuals of all ages feel secure, valued, and connected. By bridging generational gaps, we foster mutual respect and create nurturing environments rooted in love and dignity.

Our mission transcends caste, creed, and borders, empowering communities to uplift one another through empathy and inclusion. We believe homes should be places where elders share wisdom, children find belonging, and kindness breaks down all barriers. Through shared experiences, we cultivate resilience and build safe spaces that embody our vision for a more united, caring world.





# Our Mission

- To establish Mission Aashiyana homes in 100+ countries.
- To provide free, 5-star living for orphans and senior citizens.
- To create a global network of NGOs and social leaders.
- To empower youth and women through education, skills, and leadership.
- To Global reach in 100+ countries.
- To Empower elderly with care & dignity.
- To Empower 10M+ women globally.
- To Ensure education, healthcare & skill development.





# Programs & Initiatives

1. MAWF Smile Box
2. Global Knowledge Exchange Program
3. Corporate Partnerships & CSR Integration
4. Mission Aashiyana
5. World Femme Parliament
6. MAWF Hospital
7. MAWF Education Centres



# Programs & Initiatives

## MAWF Smile Box

Our interactive donation campaign invites communities to contribute joy and support through conveniently placed collection boxes in offices, schools, apartments, and public spaces. These boxes welcome donations of toys, clothes, books, and essential items, fostering a spirit of giving close to home. Dedicated volunteers take on the vital role of distributing these gifts to orphanages, slums, and shelters, ensuring every contribution reaches those who need it most. This simple, heartfelt initiative spreads warmth, dignity, and hope far beyond the collection points.



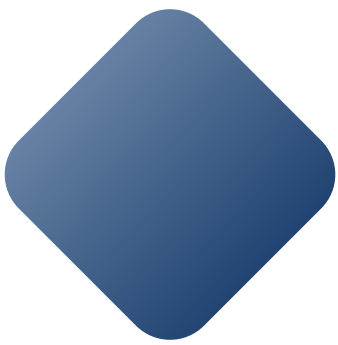


# Programs & Initiatives



## Global Knowledge Exchange Program

We empower students with future-ready global skills in key areas such as Artificial Intelligence, Coding, Innovation, Sustainability, Leadership, Communication, and Creative Thinking. Our programs are designed to cultivate critical thinking and problem-solving abilities that prepare learners for tomorrow's challenges. In collaboration with esteemed educators from Harvard, Stanford, Cambridge, and more, we bring world-class education directly into classrooms. Students engage with live UNSDG projects, connecting theory with impactful real-world applications.



# Programs & Initiatives

## Corporate Partnership and CSR Integration

At MAWF Welfare Foundation, we believe that corporates have the power to drive transformative change in society. We engage businesses through various impactful initiatives designed to align corporate social responsibility (CSR) with meaningful outcomes. Our CSR collaborations invite companies to sponsor Mission Aashiyana blocks, participate in Smile Box drives, or support orphan care programs, ensuring that their contributions create measurable impact aligned with the United Nations Sustainable Development Goals (UN SDGs).





# Programs & Initiatives

## Mission Aashiyana

At M-Aashiyana Welfare Foundation (MAWF), The Mission Aashiyana is not just a project it is the soul of our vision, born from deep compassion, lived experiences, and a burning desire to restore dignity, love, and belonging to two of the most vulnerable sections of our society — the elderly and orphans. In a world where parents dedicate their entire lives to nurturing their children, too often their own twilight years are met with loneliness, abandonment, or humiliation within the very walls they once called home.



# Programs & Initiatives

## The World Femme Parliament

The **World Femme Parliament** for Gender Equality is an exclusive platform dedicated to amplifying the voices of women leaders, entrepreneurs, policymakers, and activists who are committed to advancing gender equality, eliminating discrimination, and creating global opportunities for women's empowerment.

This initiative serves as a vital hub for collaboration and innovation, fostering dialogue among diverse stakeholders while sharing best practices and strategies that empower women across various sectors.





# Programs & Initiatives

## MAWF Hospital

**MAWF Hospital** is redefining rural healthcare by integrating cutting-edge knowledge with compassionate service. We train staff and community health workers in global healthcare innovations like AI-assisted diagnostics, sustainable treatment methods, and leadership in public health. Through partnerships with leading global educators, we bring expert insights directly to our rural campus. Practical exposure through UN SDG-driven initiatives ensures care is both locally relevant and globally informed.

MAWF Hospital is not just a place of healing—it's a hub for learning, innovation, and health empowerment.





# MAWF Global Assembly

The M Aashiyana Welfare Foundation (MAWF) proudly introduces the **MAWF Global Assembly** — a powerful international collective of changemakers, leaders, institutions, and advocates committed to building a more compassionate, inclusive, and equitable world. With the mission to establish MAWF's humanitarian presence in 100+ countries, the Global Assembly serves as our unified platform to connect, collaborate, and catalyze impact at both grassroots and global levels.

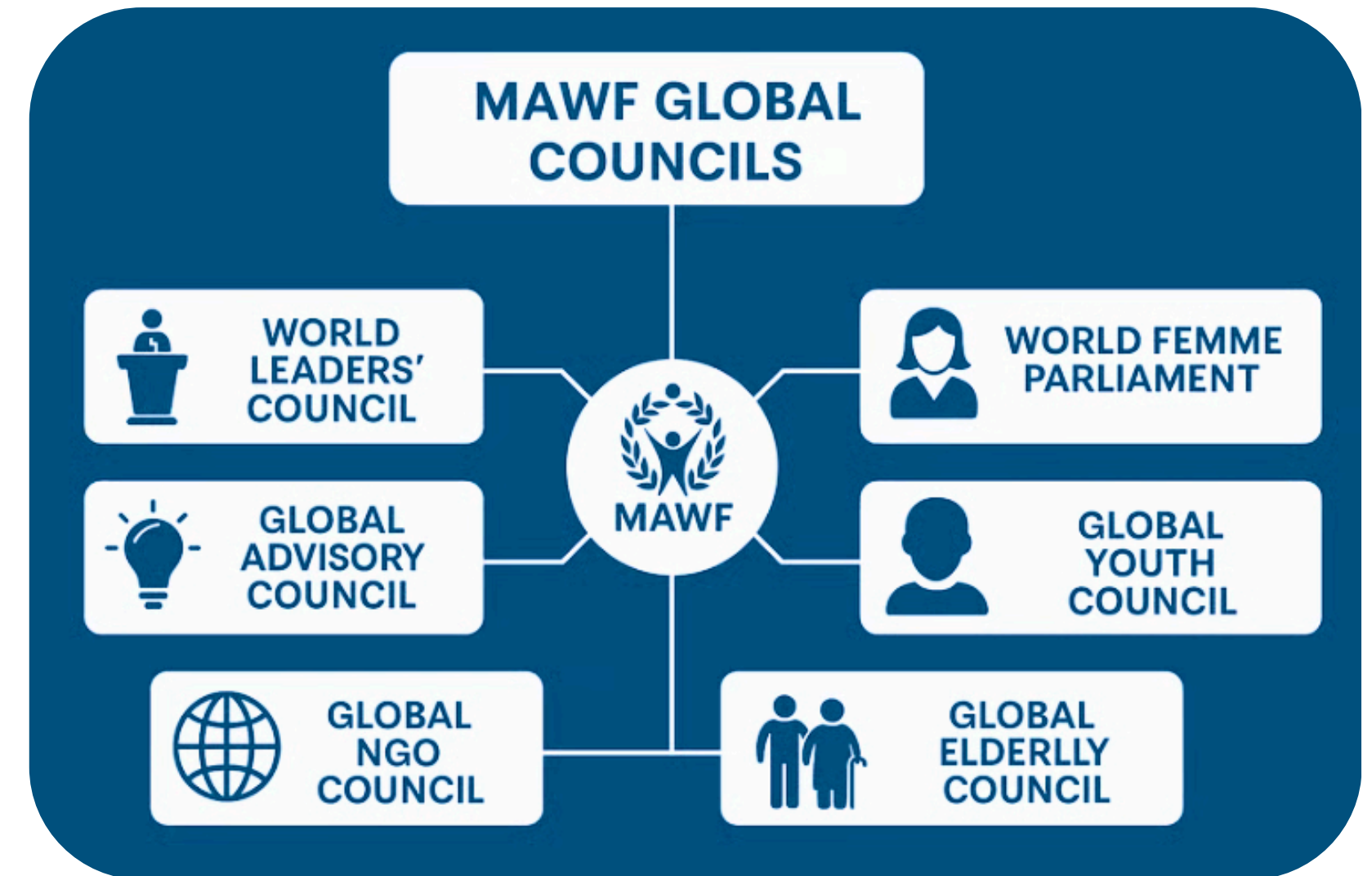




# MAWF Global Council

At M-Aashiyana Welfare Foundation (MAWF), we believe that real change begins when voices are heard, valued, and implemented through action.

Our **Global Councils** serve as high impact platforms uniting world leaders, policymakers, civil society organizations, youth, women, elderly advocates, and global experts to collaborate on solutions that uplift humanity. Each council operates with one unified vision: To transform compassion into global policies and action that empower lives across all stages of society.



# MAWF Global Insight

At the heart of every thriving society lies a simple truth: we rise by lifting others. Our welfare foundation was born from this principle, driven by a shared mission to foster equity, dignity, and opportunity for all.

Across continents, people face challenges that transcend borders—poverty, lack of access to education and healthcare, climate vulnerability, and social injustice. These issues are not confined by geography; they are part of a global story that demands a global response.



*For more information visit us @ [MAWFGLOBAL](https://www.mawfglobal.org)*





# MAWF Legacy Wall

At M-Aashiyana Welfare Foundation (MAWF), we believe that every great movement for humanity has been led by individuals whose courage, compassion, and conviction have transformed lives and communities.

**The MAWF Legacy Wall** stands as a lasting tribute to these global changemakers, leaders, visionaries, and unsung heroes whose extraordinary contributions continue to inspire, empower, and uplift.

This is not merely a wall — it is a living monument where stories of service and sacrifice are celebrated and remembered.





# Partnership Across Sectors

- ◆ School Collaboration.
- ◆ University Collaboration.
- ◆ Hospital Collaboration.
- ◆ Corporate Collaboration.
- ◆ NGO Collaboration.
- ◆ Old-age Home Collaboration.
- ◆ Orphange Collaboration.



# Upcoming Events

## Indian Nobel Summit 2025

The Indian Nobel Summit 2025 is a grand confluence of global visionaries, changemakers, and dignitaries from all walks of life, coming together to ignite impactful conversations, celebrate nobility, and align with the vision of a "Vikshit Bharat 2047." With participants from India and abroad, the summit will host over 200 influential individuals, including international delegates, embassy representatives, and domain experts. This prestigious event aims to foster collaboration and innovation, addressing pressing global challenges through shared insights and experiences.





# Upcoming Events

## The Pink Parliament

**The Pink Parliament** is a bold, transformative global initiative that brings together women leaders, changemakers, and emerging voices from around the world to engage in meaningful dialogue, foster global solidarity and drive real change for women's empowerment. Launched under the visionary movement Pink Evolution and spearheaded by the World Femme Parliament, Pink Parliament is building a worldwide platform where women's voices are not only heard — but actively shape global policies, strategies, and action.



# Contact Us - Be the Change With Us

 **E-mail : [office@m-aashiyana.com](mailto:office@m-aashiyana.com)**

For general inquiries, volunteering, or partnerships.

 **Website : <https://m-aashiyana.com/>**

Explore our programs, stories, and impact.

 **Phone/WhatsApp : +91 9266535691 | +91 9211233635**

Available Monday-Friday, 10 AM to 6 PM IST

 **Follow Us On :**



Click on the specific icons to redirect to it.







*Thank You*