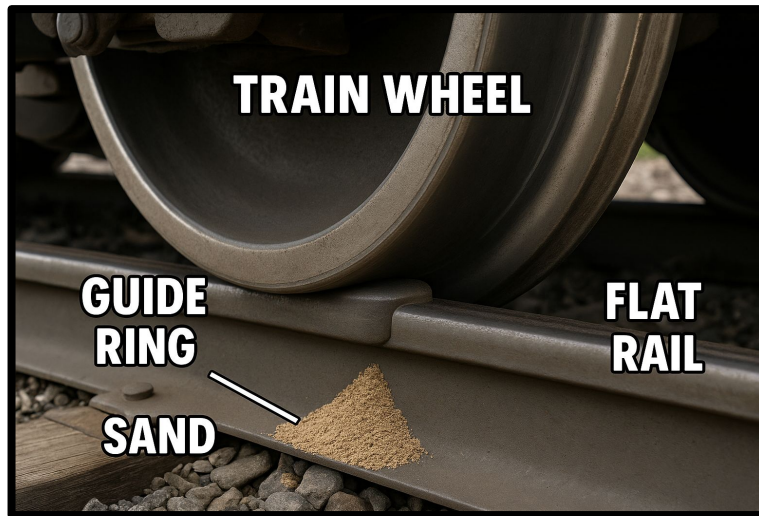


Decodable Texts: Long Vowel Teams: ai

"Today, let's find words that have the long A sound spelled with 'ai.' This story has a fun project you might want to try after reading!"



Rain Chains: A Smart Way to Guide Rain

Trains are big and heavy. How do they stay on thin rails?

Trains have wide wheels with a small rail guide. This guide is a raised ring on the wheel. It helps the train stay on the rail and not slide away.

The rails stay flat and smooth. If a rail bends or breaks, a train may fail to stay on the track. That is why people check the rails each day.

Rain can make rails slick. Trains use sand to gain grip. Sand goes on the rails to help the train wheels stay in place.

With safe rails, strong wheels, and smart people, trains can go fast and stay on the right path!

After reading the story, have your child point to and slowly sound out each practice word.

train

rails

fail

rain

gain



Name: _____

How Trains Stay on the Rails

1. How do train wheels help keep a train on the rails?

- A. They are thin and flat.
- B. They have a small guide ring.
- C. They are shaped like big blocks.
- D. They use chains to hold tight.

2. What do people do to help trains stay safe?

- A. They paint the rails each day.
- B. They check the rails for bends or breaks.
- C. They make the rails go uphill.
- D. They keep the rails covered in sand.

3. Fill in the blank:

Trains use _____ to help the wheels stay in place when the rails are wet.

4. Why is it important for people to check train rails every day?

5. How does the guide ring on a train wheel help?



Coaching Guide

Target Skill: Long Vowel Team 'ai'

Genre: Nonfiction – Science & Technology

High-Frequency Words: the, they, on, are, with, can

Before Reading

1. Remind them of the target skill: "Today we're reading nonfiction and looking for words with the long A sound spelled with 'ai.'"
 2. Have you ever seen a train? What did it look like?
 3. Why do you think it's important for trains to stay on their tracks?
-

During Reading

1. **Sounding Out Support:** Remind kids that the 'ai' spelling makes the long A sound like in "train."
 2. Watch for target skill words as you read!
 3. What do trains use to help gain grip on wet rails?
 4. Try reading the last line with a strong, confident voice to show how safe trains can be!
-

After Reading

1. Can you retell how trains stay safe on their tracks?
 2. Why is rain a problem for train rails?
 3. Would you want to check rails each day? Why or why not?
 4. Find and highlight 5 words with the 'ai' spelling.
 5. **Fluency Tip:** Try reading the story again and read the facts like you're teaching someone new!
-

Activity Idea

Draw a simple train wheel and show where the rail guide ring is. Label the rail, the guide ring, and the wheel. Write a short sentence to explain how each part helps keep the train safe. Then, share your drawing with someone and teach them what you learned!

Coaching Tip

Support kids by praising their careful reading of new nonfiction words and encouraging them to teach others what they learned!

