



SINKAI

**MŪSŲ KOMPETENCIJA ŠIANDIEN
JŪSŲ SĖKMĖ RYTOJ**



CONTENT

- 1 Asphalt production equipment
 - 1.1 Asphalt production equipment and components KOVINARSKA WIBAU
 - 1.2 Automation and modernization of asphalt plants
 - 1.3 Used asphalt plants and components
 - 1.4 Drying drum
 - 1.5 Burners
 - 1.6 Bitumen tanks
 - 1.7 Silo
 - 1.8 Weighing systems
 - 1.9 Dosing systems
 - 1.10 IBC dosing/storage containers
 - 1.11 Polymer modified bitumen production equipment
 - 1.12 Bitumen emulsion production equipment
 - 1.13 Packing equipment
- 2 Chemical additives and pigments for asphalt
- 3 Road construction equipment
 - 3.1 Soil stabilization and compaction equipment STEHR
 - 3.2 Combined road maintenance machines
 - 3.3 Soil stabilization spreader SPREADTECK
- 4 Spare parts for asphalt production equipment
 - 4.1 Spare parts for asphalt mixers
 - 4.2 Valves and drives
 - 4.3 Milling picks
 - 4.4 Filter bags
 - 4.5 Polyurethane products
 - 4.6 Bulk material transport systems, elevators and spare parts
 - 4.7 Screens for asphalt mixers and quarry equipment
 - 4.8 Paver parts

ASPHALT PRODUCTION EQUIPMENT

ASPHALT PRODUCTION EQUIPMENT AND COMPONENTS KOVINARSKA - WIBAU

- Asphalt plants producing from 80 to 160t/h;
- Plants are manufactured in standard configurations or according to customer needs;
- Energy-saving optimized system;
- High-quality insulation materials are used;
- Automatically cleaning filter;
- Asphalt production equipment is manufactured in Europe;



Asphalt plant advantages:

- High-performance Wibau mixer;
- High-pressure bitumen injection in the mixer guarantees the integrity of the asphalt mixture;
- Fully automated PLC control process;
- Compatible with other equipment;
- Burner options:
 - Natural gas;
 - Fuel oil;
 - Coal flour;

AUTOMATION AND MODERNIZATION OF ASPHALT PLANTS



- Modernization of asphalt plants.
- Installation and automation of a new control system.
- Advantages of the Miprotek M4 control system we are installing: Accurate fault detection function.
- You do not need to call a specialist, because the program identifies the exact location of the fault.
- Simple and convenient program management.
- The most frequently used functions are visible in the main window.
- Reliable Phoenix modules are used in the automation, ensuring uninterrupted smooth operation.
- Online help.

USED ASPHALT MIXING PLANTS AND COMPONENTS

- We act as an intermediary in the sale of used equipment.
- We advise on the renovation and modernization of plants.
- We assess the condition of used equipment.
- We dismantle and assemble equipment.
- We provide plant transportation services.



DRYING DRUM

The inner shell of the drum is made of thick-walled special steel, optionally from 10 to 12 mm: on the combustion side from 16Mo3, on the charging side from Hll steel.

Differently shaped blades in the material feeding, heat exchanger and burner zones guarantee efficient heat transfer.

Blades on the combustion side from 16Mo3, on the charging side from Hll steel.

The blades are fastened with bolted connections, making them easy to replace.

The outer walls of the drum are insulated with an air lining layer with a sheet metal casing.

The charging wall is made of 16Mo3 steel, the charging wall from Hll steel.

The steel frame of a stable construction, the friction wheels are driven by 4 separate gear motors with adjustable drive rollers.

The burner opening is adjustable according to the existing burner.



BURNERS

We offer Vitotherm burners for industry and asphalt production.

Burner systems for (bio)oil, (bio)gas and LPG.

Vitotherm burner systems can be customized according to customer needs and specific requirements.

Single block burner:

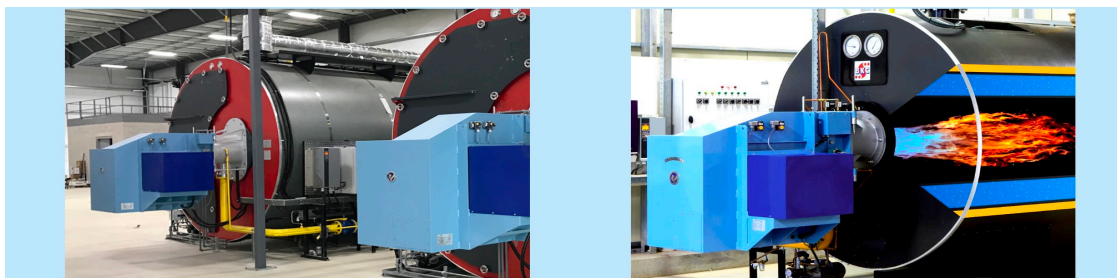


Compactly designed industrial burner systems.

They do not take up much space, are easy to install and maintain.

Two-block burners: The burner consists of two units that are connected by a duct.

The fan can be placed in another room, thus reducing the noise level.



BITUMEN TANKS



We manufacture bitumen tanks according to individual needs.

Bitumen tanks are heated with thermal oil or electricity.

Tank size from 2 to 100 cubic meters.

The tank can be divided into two sections.

Insulation from 100 to 300mm, without a cold bridge.

Automatic temperature maintenance.

Continuous level measurement.

Temperature change without heating the tank and at a positive outdoor temperature, no more than 3°C per day.

Complete with a safety overpressure valve.

If necessary, complete with a mixer for storing polymer bitumen.

Electrically heated tanks are equipped with two heating levels:

- bottom heating - for constant temperature maintenance;
- powerful flange heater - for defrosting or rapid temperature increase.

Installation of bitumen tanks.

SILO

Bulk material silos;

Mineral flour silos;

Silos can be equipped with:

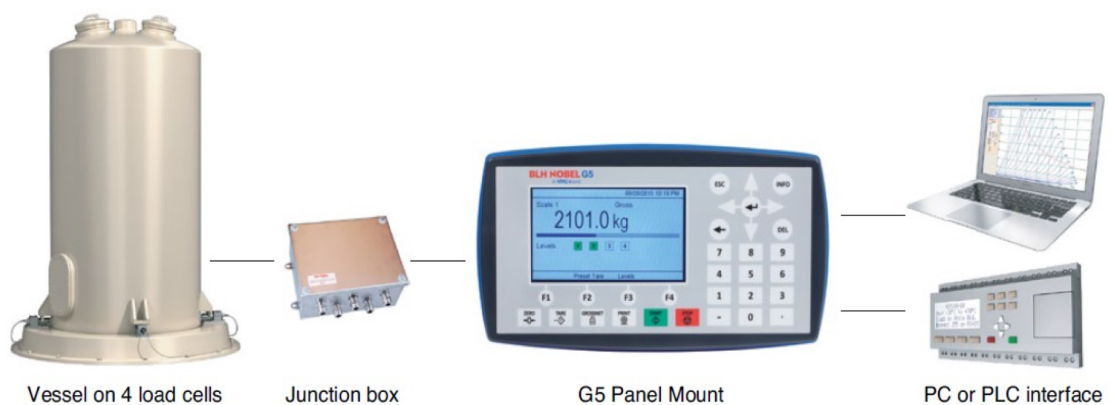
- Conveying systems;
- Dust removal filters;
- Dampers;



WEIGHING SYSTEMS

WEIGHING SYSTEMS FOR BUNKERS

A sensor is installed on each leg of the bunker, which measures the metal deformation. A weighing computer is installed in the panel in the cabin. There are tare and zero buttons. When the tare button is pressed, the actual weight loaded into the trailer is displayed.



DOSING SYSTEMS

Dosing involves the addition of liquid additives and/or solids to mixtures. Additives can be added to the bitumen or directly to the mixer.

Pneumatic dosing of polymer and cellulose fiber granules.

Dosing of liquide additives

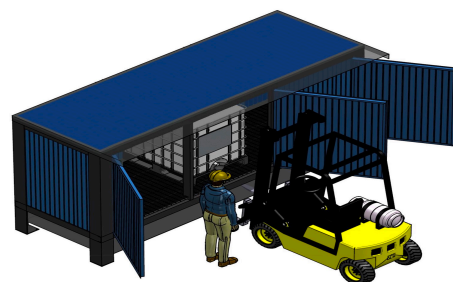
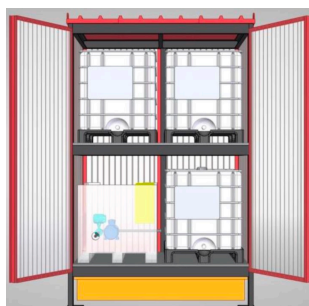


IBC PLASTIC CONTAINERS FOR DOSING/STORAGE

Metal double-deck container, holding 4 IBC containers or single-deck container, holding 3 IBC containers.

Protected from atmospheric influences, has a lock to prevent unauthorized persons from entering.

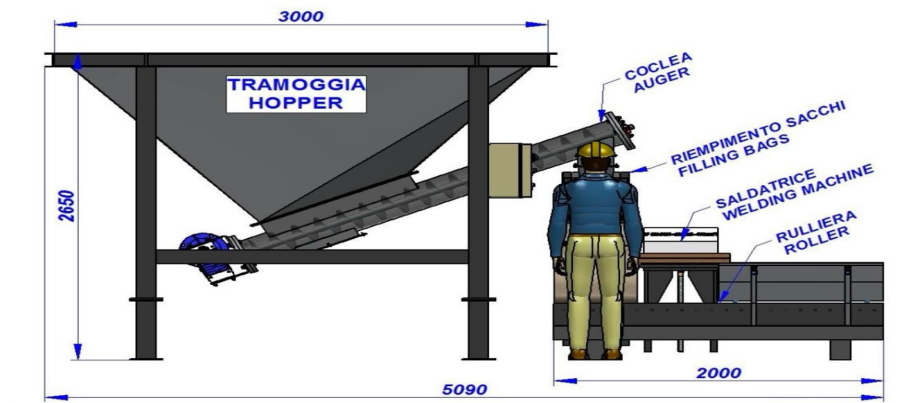
A collection tank for hazardous materials is installed under the entire storage container.



PACKING EQUIPMENTS

Cold asphalt packaging line in plastic bags:

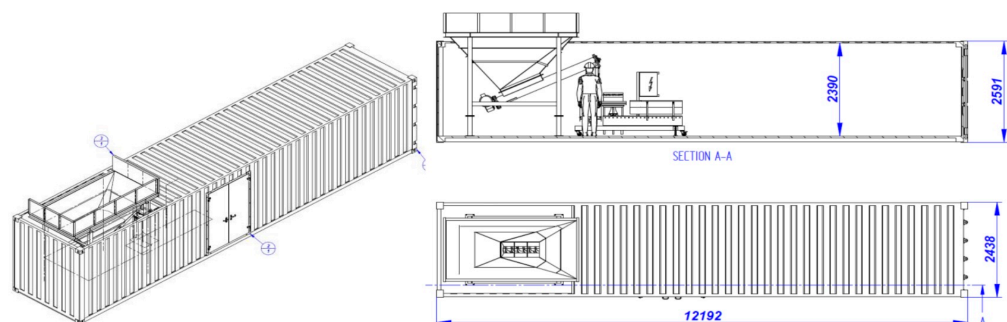
Packaging equipment can be mechanical, semi-automatic and automatic.



We equip the packaging line with a soldering machine, conveyors, air compressor and a manipulator for transferring bags.

All equipment, already during production, can be placed in a sea container, in which electrical installations, racks as needed, lighting, doors with locks and external device connections are installed.

The container is covered with an anti-corrosion coating and can be painted in the color of your choice.



CHEMICAL ADDITIVES AND PIGMENTS FOR ASPHALT

CHEMICAL ADDITIVES FOR ASPHALT



- Adhesion promoters for all types of bitumen;
- StarDope Asphalt laying temperature reducing additives WarmMIX 2G;
- Refreshing additives for old asphalt;
- Flux Oil - for cold mixes;
- Transparent binding additives for colorless and colored coatings Mortars for colored areas (tennis courts, pedestrian and bicycle paths, crossings).

PIGMENTS



Pigment for asphalt flour is packed in 20 or 25kg bags;
The weight is calculated to reduce the burden on the worker;
Dust-free packaging;
The recommended pigment ratio is 0.03 percent of the weight of the materials;

ROAD CONSTRUCTION EQUIPMENT

SOIL STABILIZATION AND COMPACTING TECHNOLOGY STEHR

Road construction equipment;
 Well drilling equipment;
 Channel milling equipment;
 Soil stabilization equipment;
 Soil compaction technique;



COMBINATED ROAD MAINTENANCE MACHINES

Combined road maintenance machines;
 Emulsion sprayers;
 Asphalt crack repair machines;



STABILIZATION SPREADER SPREADTEC



- Precision spreading technology with manual hydraulic or full electronic automatic rate control;
- In-house designed software control, diagnostics and operating system;
- Manual & automatic independent hydraulic control of floor, auger & metering rotor;
- Manual flow & proportional hydraulic control of valves;
- Telematic remote monitoring on all automatic model

Versions;

- Manual or automated cleaning cycle for end of day;
- Low and high spread applications;
- Low dust operation;
- Ease of operation;
- Minimal service & maintenance;

SPARE PARTS FOR ASPHALT PRODUCTION EQUIPMENT

PARTS FOR ASPHALT MIXING PLANTS

Parts for asphalt mixers: blades, blades, armor and brackets.

We offer mixer parts for Teltomat and Benninghoven factories.

We manufacture wear-resistant parts according to your needs and sample.

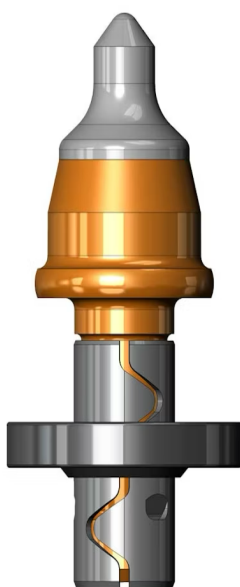


VALVES AND ACTUATORS

The Swedish company Ceon ab designs and manufactures a wide range of products for general industry, oil and gas pipelines, and the marine industry. High quality, certified valves and actuators are supplied worldwide.



MILLING PICKS



Elementsix offers the highest quality milling teeth.

D-Power innovative road milling teeth with a synthetic diamond tip, the service life of which lasts 40 times longer than a standard milling tooth. Master Grade M-Series Road Picks are manufactured using patented Nano technology, which ensures greater resistance to wear and breakage, thus extending the service life by up to 50%.

Milling teeth for soil stabilization techniques;

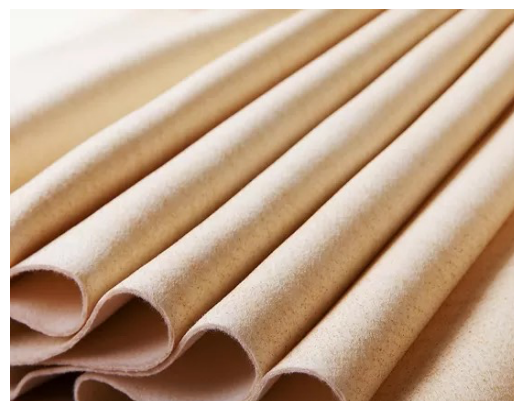
T-Series standard road milling teeth;

FILTER BAGS

The highest quality materials are used for the production of filter bags;

Aramid material - maximum operating temperature 200°C;

Standard material - homopolymer acrylic. Maximum operating temperature 120°C;



Filter bags are manufactured for all types of asphalt mixing plants;

We manufacture non-standard products according to individual needs.

Upon request, filter sleeves can be impregnated;

POLYURETHANE PRODUCTS

For industry: rollers, conveyors;

For concrete plants: blades and guards;

For road construction equipment: scrapers for compaction rollers, scrapers for snowplows;

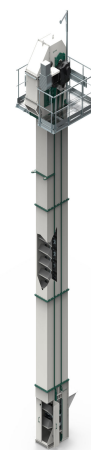
For ship side guards;

Individual orders from polyurethane, and metal and polyurethane compounds.



BULK MATERIALS TRANSPORTATION SYSTEMS, ELEVATORS AND SPARE PARTS

- Chain elevators;
- Belt elevators;
- Screw conveyors;
- Pipelines;
- Spare parts;
- Manufactured according to individual orders;



SCREENS FOR ASPHALT MIXERS AND QUARRY EQUIPMENT

Flexible metal screens;
Stainless steel wire screens;
Self-cleaning screens;
Polyurethane screens;
Rubber screens;
Perforated screens;



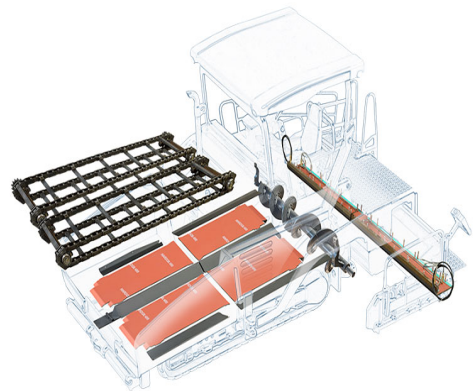
PAVER PARTS

We produce replaceable and wear parts that are extremely durable and perfectly suited to pavers.

The high quality and durability of the parts are based on thoughtful development and production.

As well as on continuous optimization of the parts: during the development process, we maintain close cooperation with our customers and carefully respond to any feedback received from practice.

This allows us to constantly innovate our products. Our production is mainly based on experience and instincts, as well as on the precision ensured by the latest technologies, such as modern CNC machines and laser robots. All parts are made in Germany.



CONTACTS

UAB SINKAI

Registration code: 30246325

VAT code: LT100006318119

AB SEB bankas: LT92 7044 0600 0787 1932

AB Šiaulių bankas: LT66 7189 9000 5046 7314

Address:

Didžiųjų Gulbinų str. 3

LT14281, Vilnius

Lithuania

info@sinkai.eu

Simonas Sinkevičius

simas@sinkai.eu

+370 62023190