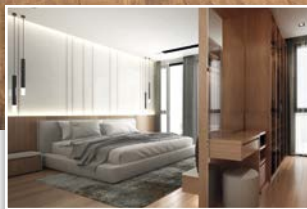
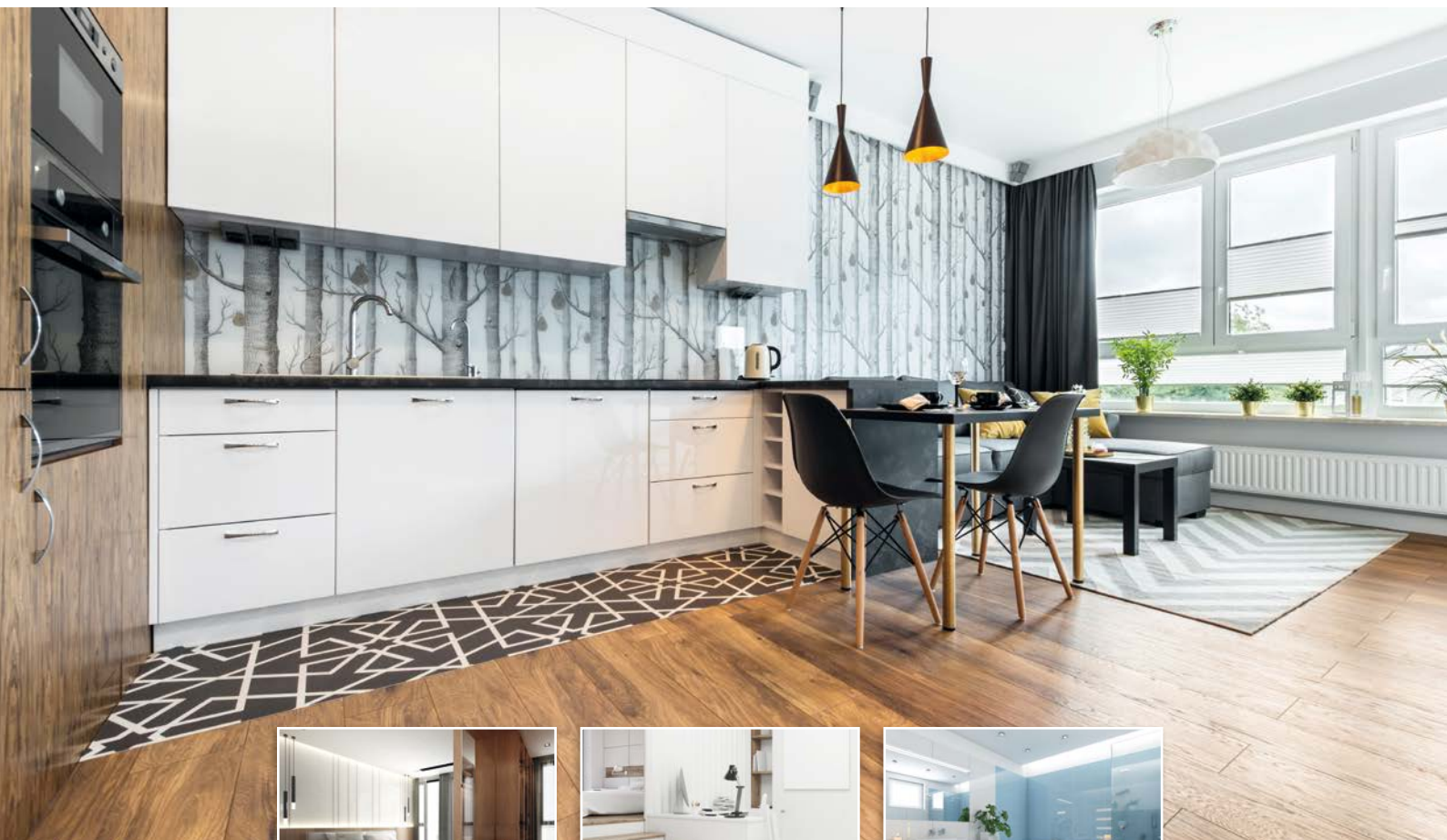


PUR-Hotmelts for **Flat Lamination**



Adhesive systems for bedroom, living room, kitchen, and bathroom furniture



Adhesives for Modular Furniture

Adhesive systems for kitchen and bathroom furniture as well as living room and bedroom furniture

Modular furniture has become indispensable in living rooms and bedrooms. They are everyday objects in the form of cabinets, dressers, or media consoles which can be found in almost every living room and bedroom. The furniture panels are often made of wood-based materials such as MDF or particleboard. To create a pleasing appearance, the surfaces are decoratively coated. Without suitable adhesives, this would not be possible. The same applies to assembly bonding. Durability, perfectly laminated surfaces or edging without a visible glue line define the demanding requirements profile of the adhesive. For a simple and efficient production process, the adhesive plays a key role. Especially for bathroom or kitchen furniture, the use of the right adhesive is crucial. This is the only way to produce furniture that will withstand external influences for many years. These are above all heat, moisture or steam.

Polyurethane-based adhesives offer by far the best performance in this respect. KLEIBERIT micro-emission adhesives are especially being used more and more in this area. They enable increased occupational safety and are more environmentally friendly in production.

Laminating furniture fronts

Flat furniture panels made of wood-based materials such as particleboard or MDF are typical components of modular furniture. According to the appearance and quality requirements, the surfaces of the furniture panels are finished with decorative materials. Whether real wood veneers or plastic films made of ABS, PMMA or PET - the variety of decors is vast. This offers furniture designers almost unlimited possibilities.

Flat lamination is used for:

- Furniture and kitchen fronts
- Furniture side panels
- Furniture back panels
- Shelves

Super matt or high-gloss decors, for example, are currently in trend. To achieve this visual effect, a mirror-smooth surface bonding is required. Especially with thin decor, this becomes a challenge, since the visual differences become noticeable with the slightest unevenness. In the long term, it is also important to ensure excellent resistance to moisture, heat and steam.

Micro-Emission Adhesives for Flat Lamination

Product	Viscosity 120 °C [mPa·s]	Viscosity 140 °C [mPa·s]	Open time 20 °C [min]	Characteristics/Applications
706.1.50	18,000	9,000	< 8	The adhesive for high gloss, extremely high surface-smoothness, no labelling required, high initial strength, approval for maritime applications (IMO certificate)
706.2.50	12,000	6,000	< 6	No labelling required, good high gloss characteristics and excellent transfer after pressing both of the parts to be bonded
706.7.50	14,000	6,000	< 6	No labelling required, high initial strength for impermeable materials e.g. HPL
711.0.02	8,000	4,000	< 1	For lightfast and transparent bonding, no yellowing of the joint, Complete Line
711.3.03	10,000	5,000	< 4	Excellent adhesion to many plastics, very good roller stability
716.8.50	16,000	8,000	< 6	No labelling required, plastiziser resistant lamination of flexible coatings e.g. LVT flooring and excellent adhesion to plastics

Reactive PUR Hotmelts for Flat Lamination

Product	Viscosity 120 °C [mPa·s]	Viscosity 140 °C [mPa·s]	Open time 20 °C [min]	Characteristics/Applications
706.0.00	12,000	6,000	1-2	All-rounder, also for manual process, approval for maritime applications (IMO certificate)
706.0.09	12,000	6,000	1-3	Good for bonding plastics, FDA conform, MDI < 1 %
706.1.00	12,000	6,000	< 4	The all-rounder with excellent initial strength, approval for maritime applications (IMO certificate)
706.4.00	35,000	15,000	3-4	Very high initial strength, for materials with high memory forces
706.7.00	20,000	9,000	4-5	Extreme high initial strength, especially for HPL with very high memory forces
706.9.00	30,000	20,000	4-5	Long open time, for pressure sensitive cores
709.1.00	11,000	5,000	3-4	Product for inorganic materials, excellent metal adhesion
709.3.00	8,000	4,000	< 3	The adhesive for high gloss, extremely high surface-smoothness
711.2.00	10,000	5,000	1-3	Plastics specialist for materials which are difficult to wet
711.3.00	12,000	6,000	2-3	For bonding of diffusion proof materials, no gassing/bubbling, approval for maritime applications (IMO certificate), MDI < 1 %
711.9.06		20,000	< 5	Very high initial strength, high viscous product for porous and pressure sensitive cores
716.8.00	12,000	6,000	< 8	Plastiziser resistant, lamination of flexible coverings, eg. LVT flooring



high gloss



LVT flooring



sandwich panels



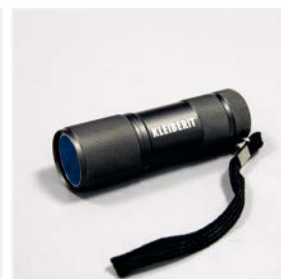
Complete Line

Cleaners

Product	Packaging	Characteristics/Applications
760.3.00	bag 20 kg	Special cleaner in mini-flake form for cleaning the application and dosing rollers on flat lamination lines
761.6.00	aluminium can 200 g, standup pouch 400 g, pouch pack 1.8 kg, pouch pack 18 kg, drum 50 kg, drum 180 kg	Cleaning of tank and drum melters, gear pumps and transport hoses, metal application units (e.g. slot nozzle, roller); combines the function of flushing cleaners like KLEIBERIT 761.7 and the intensive cleaner KLEIBERIT 826.0 in just one product
761.7.00	aluminium bags 1.5 kg, pouch pack 15 kg, pail 20 kg, drum 150 kg	Cleaning of tank and drum melters, gear pumps and transport hoses, metal application units (e.g. slot nozzle, roller)
761.8.00	pail 20 kg, fiber drum 136 kg	Powder, special cleaner for application and dosing rollers on flat lamination lines
820.0.05	canister 4.5 kg	Cleaning of teflon cheeks
822.2.05	canister 5 kg	Cleaning agent for metal rollers
823.3.05	canister 4.5 kg	Cold cleaner for removal of hardened adhesive residue on machine parts, tools and devices
826.0.05	canister 4.5 kg	Cleaning liquid for removing cured adhesive residue using heat

Additional service products

Product	Article number	Packaging
Gloves	898.5.9527	1 pair
Arm protectors	898.6.9527	1 pair
Grease	883.1.0081	12 x 270 g
Cleaning cloths	893.8.9500	10 kg
LED UV light	-	1 pc



A separate adhesive series is available for high-gloss surfaces. For other decors, we also have the right adhesive in our portfolio. We also offer tried-and-tested inline solutions that skillfully combine the bonding of surface and edge (e.g. complete line process).

Our engineers have decades of experience in bonding a wide variety of material combinations. They are familiar with the various machines and application methods on the market and are highly committed to developing tailor-made bonding processes together with our customers.

Would you like expert advice? Work with us to find the right adhesive. Contact us directly by e-mail or phone.

KLEBCHEMIE M. G. Becker GmbH & Co. KG
 Max-Becker-Str. 4
 76356 Weingarten/GERMANY
 Phone: +49 7244 62-0
 Fax: +49 7244 700-0
 Email: info@kleiberit.com
www.kleiberit.com