

7 days
**Assam &
Meghalaya**
ITINERARY




Embrace
HOLIDAYS
www.embraceholidays.com

 +91 701 244 8988, 952 600 1926

 /embraceholidays  /embraceholidays



7 days
Assam & Meghalaya

DAY
1



Dinner

Arrive at Guwahati Airport, meet & greet. Drive to Kaziranga (approx. 5–6 hrs). Check-in to hotel. Evening at leisure. Overnight stay at Kaziranga.

Arrival
Guwahati
Kaziranga



DAY

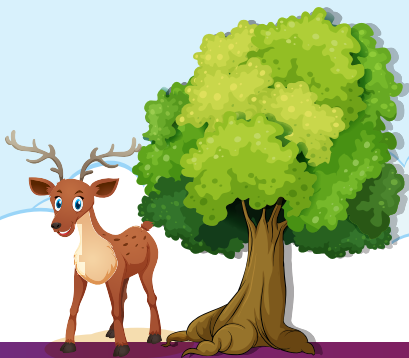
2



B/F - Dinner

Breakfast at the hotel. Afternoon, Jeep Safari at Kaziranga National Park. Then visit Orchid park. Evening cultural show at Kaziranga and overnight stay at hotel.

Kaziranga
Safari Day



7 days Assam & Meghalaya

DAY
3



B/F - Dinner

Kaziranga Shillong

Breakfast and check-out. Drive to Shillong (approx. 5-6 hrs).
En route visit Umiam Lake (boating optional).
Evening Police Bazaar for shopping.
Overnight stay at Shillong.

DAY
4



B/F - Dinner

Shillong Cherrapunjee Excursion

Visit Mawkdok Viewpoint, Wah Kaba Falls, Nohkalikai Falls,
Mawsmi Cave, Seven Sisters Falls and Garden of Caves.
Return to Shillong.
Overnight stay at Shillong.





7 days

Assam & Meghalaya

DAY
5
B/F - Dinner



Mawlynnong Dawki Day Trip

Visit Mawlynnong – Asia's Cleanest Village. Walk to the Living Root Bridge and see the Balancing Rock. Proceed to Dawki for boating on the Umngot River (subject to weather & water level). Return to Shillong.
Overnight stay at Shillong.



DAY
6
B/F - Dinner



Shillong Guwahati

Breakfast and check-out. Drive to Guwahati (approx. 3–4 hrs). Check in to hotel. After sometime Visit Kamakhya Temple, Balaji Temple and Brahmaputra Riverfront. Evening enjoy Sunset Cruise on the Brahmaputra River.
Overnight stay at Guwahati.



7 days Assam & Meghalaya

DAY

7



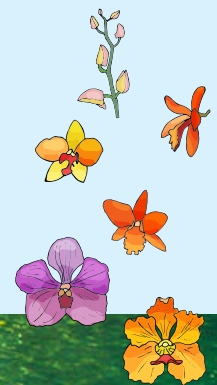
B/F

Departure

Breakfast and check-out.

Transfer to Guwahati Airport for onward journey.

Tour ends with beautiful memories.





7 days Assam & Meghalaya

Package Inclusions

- Airfare
- Accommodation on double sharing basis in 3 star deluxe hotels
- Meals on MAP plan (Breakfast & Dinner)
- All transfers and sightseeing by A/c coach
- Jeep Safari at Kaziranga National Park
- Brahmaputra sunset River Cruise
- Cultural show ticket at Kaziranga
- Driver allowance, toll tax and parking charges
- Hotel taxes and service charges

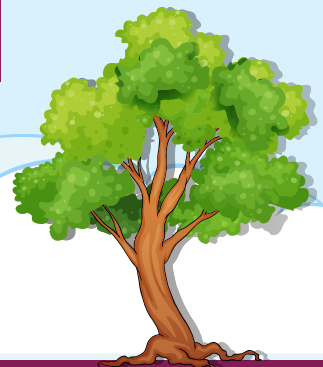
Package Exclusions

- Entry fees at monuments and sightseeing points
- Boating charges (Umiam Lake / Dawki)
- Personal expenses and beverages
- Anything not mentioned under cost includes

For bookings & more information:

Call: +91 7012448988, 9526001926

Package ID:EH/AM/2026



7 days Assam & Meghalaya

Terms and Conditions

Embrace Holidays reserves the right to amend, alter, postpone or cancel any of the tours announced or advertised, without assigning any reason. In case of a complete cancellation, money paid by the tour participant will be refunded deducting the third party or vendor booking charges like air tickets, but no compensation claim will be entertained. In case of unforeseen situations, natural or man-made, like, acts of God, riots, wars, accidents, embargo, terror attacks, coup, strike, natural calamities, bad weather or unforeseen circumstances, premature cancellations or no show - all these will be entirely to the customer account and no claim / refund for the same shall be accepted. Company reserves the right to change / modify / vary and alter the tour itinerary if it becomes necessary. In such cases, compensations or claiming of refunds by the tour participant will not be entertained for limitation and also for the non-availability of certain services including parks, museums, restaurants, sightseeing shopping etc. even though included in tour itinerary. The tariff of the tour quoted is calculated as per the rates prevailing at the time of quoting it. Embrace Holidays reserves the right to change the tariff in the event of modification / alteration / change / variation in the said rates before the date of departure. Tour tariff is based on departure from Cochin, unless specifically mentioned the boarding destination. Group tour costs are based on a minimum 20, 25 or 30 passengers travelling together in the group and minimum number of FIT tours are 2. In a group tour, if there is a drastic fall in the number, then the offered itinerary, meal plan, vehicle and other services may change accordingly. In case of non-availability of rooms in same hotel, Company has the right to split the accommodation in different hotels for a group. Hotel accommodation is generally provided on Twin sharing basis in standard rooms and the third bed is often a roll-away mattress put in a twin-bedded room. Single passengers, should share a room either on a twin or triple sharing basis depending on the booking. If we do not have another single person to share with, an additional cost will be applicable. Air conditioning, central heating and other facilities are provided by the hotels depending upon various factors including weather / climatic conditions, local systems, tour type, etc. As a Holiday company / Tour Operator, Embrace Holidays does not have any control over Airlines, Railways, Coach Companies, Shipping Companies, Hotels, Local Transport or any other facilities, provided by the third parties. The company is not responsible for the delays or deficiencies in the services provided by outside agencies. Also please be aware of that the company does not have any control on holidays, schedules of opening and closing timings, entry ticket rates etc. of the tourist attractions. In the computerized reservation system of Indian Railways/Airlines, the berths / seats once reserved cannot be changed. Tour participants will have to travel by the same berth/seat as mentioned in the ticket, issued by Indian Railways/Airline. Company shall not be responsible for any loss, damage or injury to person, property, or otherwise in connection with any accommodation, transportation or other services, resulting-directly or indirectly- from any act of dangers, fire, accident break-down in machinery or equipment, breakdown of transport, wars, civil disturbances, strikers, riots, thefts, pilferages, epidemic, medical or custom department regulations, defaults or any other causes. Tour cancellations, or modifications by any participant should be in email to our official mailbox.

Please read our full Terms and Conditions, on: <https://embraceholidays.com/official/terms>

By purchasing/booking a service/product from Embrace Holidays it is assumed that you agree to these terms and conditions.

Cancellation Policy

Period of Cancellation

Booking Advance:

46 days & above before departure:

45-21 days:

20 -15 days:

14 -0 days before departure:

Air tickets taken separately exclusive of package cost

Train /Bus / Ferry / Cruise tickets:

Visa:

Insurance:

Cancellation Charges

100% of the booking advance.

(If not otherwise mentioned, the first payment shall be considered as Booking advance, exclusive of air, land and water travel tickets.)

25% of the total tour cost or booking advance whichever is higher.

50% of the total tour cost or booking advance whichever is higher.

75% of the total tour cost or booking advance whichever is higher.

100% of the total tour cost.

As per Airline policy / 100% non-refundable within 30 days.

As per the policy of the concerned provider.

Non-refundable.

Non-refundable.

The above mentioned cancellation policy is applicable on total tour cost. GST & TCS to be paid additional over and above the cancellation charges.

Booking advance will not be refunded under any circumstances. In case of a part payment, whatever the amount paid at the time of cancellation will be considered as the total tour cost. It has been clarified that the cancellations are non-transferable and cannot be applied towards future bookings. Embrace Holidays reserves the right to modify the cancellation policy at any time, with or without prior notice, at its sole discretion.

* images are indicative only.

* All booking confirmations are subject to availability.

* For all claims, disputes of whatsoever nature relating to the tours the courts, forums and tribunals in Kozhikode alone shall have exclusive jurisdiction.

Our packages does not generally include travel insurance. However, we strongly recommend travelers to get covered with a suitable travel insurance policy before they embark on their holiday trips. Contact us for any assistance in buying a policy from our empanelled Insurance Companies.

Embrace
HOLIDAYS

For bookings & more information :

Call : +91 7012 448 988, 952 600 1926

9/1585-B1, Second Floor, Reema Complex,
Post Karaparamba, PIN: 673010
Kozhikode, Kerala, India.

+91 9526001926, 97466 01926, 7012448988

info@embraceholidays.com, embraceholidays@gmail.com

www.embraceholidays.com

[/embraceholidays](https://www.facebook.com/embraceholidays)

[/embraceholidays](https://www.instagram.com/embraceholidays)

Bank Account Details:

Name : Embrace Holidays

Account No: 248905001333

Bank : ICICI Bank

Karaparamba, Kozhikode

IFSC : ICIC0002489

[G Pay](#) [Paytm](#) [PhonePe](#) [amazon pay](#) [BHIM](#)

Transfer the money to the given bank account. You can use Bank Transfer through NEFT, RTGS or any UPI platforms.

ICICI Bank



4.9 STAR
CUSTOMER RATING

