



Beauty
Beyond the Peaks.

Almaty

Kazakistan

04 NIGHTS
05 DAYS

For bookings & more information :
Call : +91 701 244 8988, 952 600 1926

 /embraceholidays

 /embraceholidays

Travel itinerary 2026


Embrace
HOLIDAYS

Arrival

DAY 1

Arrival at Almaty. Meet and greet from our representative at airport. Then you will be transferred to the hotel. Check-in to the hotel and overnight stay at hotel.

DAY 2



BREAKFAST

Shymbulak Mountains/Zenkov Cathedral/Arbat Street

Breakfast at the hotel. Then start your tour to:

Shymbulak mountains a stunning mountain escape nestled in the magnificent Zailiisky Alatau mountains, just a short distance from Almaty, Kazakhstan! Whether you're an adrenaline junkie, a nature lover, or simply seeking a serene retreat, Shymbulak offers an unforgettable experience.

Ride the cable car up the majestic Shymbulak mountains, where you can indulge in outdoor activities like hiking or simply revel in the breathtaking natural scenery.

After the visit proceed to Zenkov Cathedral which is a stunning example of Russian orthodox architecture, known for its colorful exterior and ornate interior and visit the eternal flame nearby.

Then to Arbat walking street which is lively pedestrian street lined with shops, cafes and street performers.

Overnight stay at hotel.

DAY 3



BREAKFAST

Kolsai lake & Charyn Canyon

Breakfast from hotel

Embark on an unforgettable journey to some of Kazakhstan's most stunning natural wonders:

Kolsai Lake: a series of three alpine lakes renowned for their crystal-clear waters and picturesque surroundings, offering opportunities for hiking and photography.

Charyn Canyon, black canyon, lunar canyon: marvel at the grandeur of this geological wonder, known for its striking red rock formations and dramatic landscapes resembling the grand canyon

Back to hotel and overnight stay at hotel



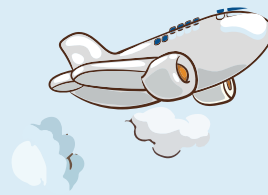
Kolsai Lake & Charyn Canyon

Kok Tobe • Mountain

DAY
4



BREAKFAST



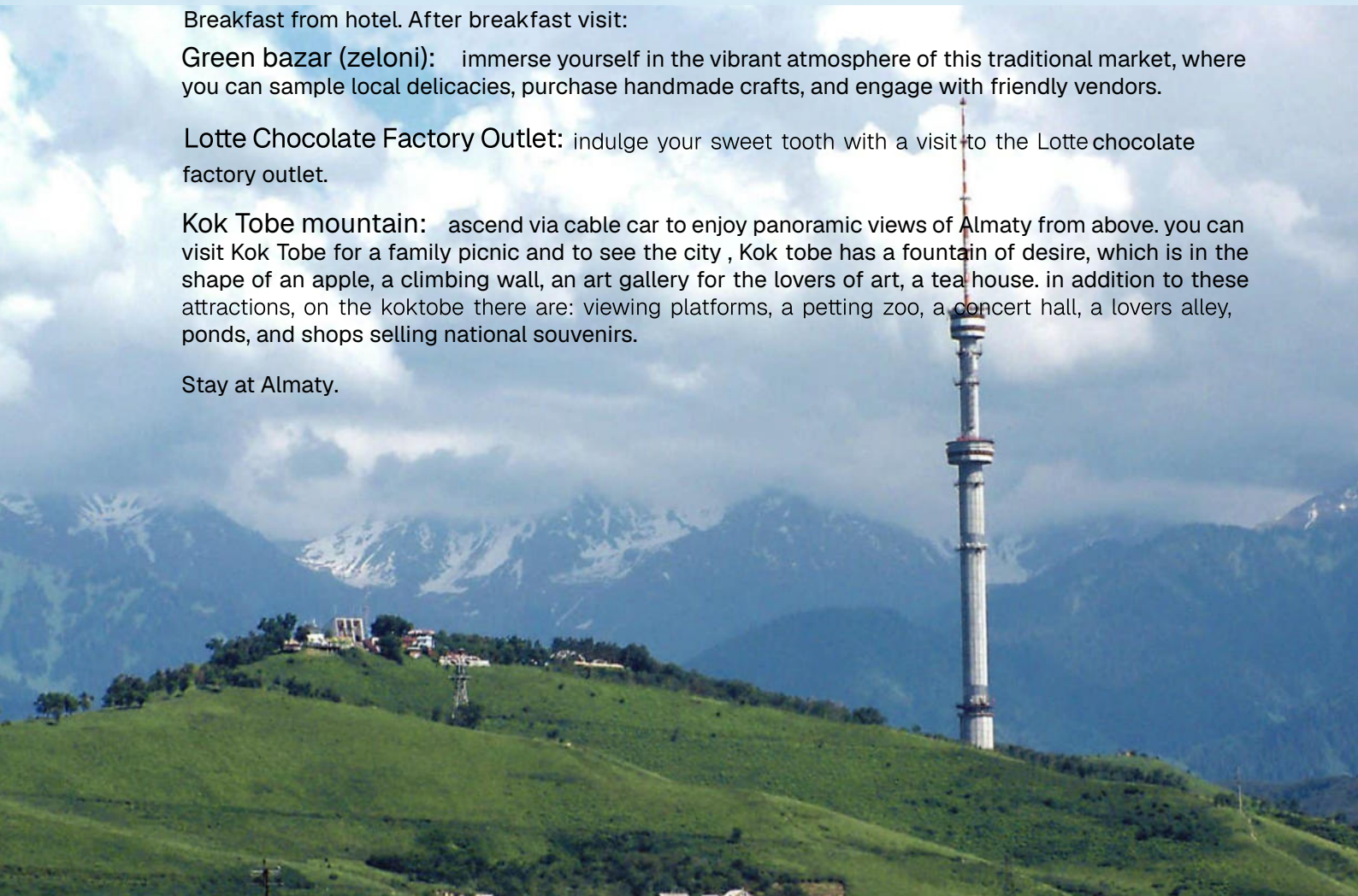
Breakfast from hotel. After breakfast visit:

Green bazar (zeloni): immerse yourself in the vibrant atmosphere of this traditional market, where you can sample local delicacies, purchase handmade crafts, and engage with friendly vendors.

Lotte Chocolate Factory Outlet: indulge your sweet tooth with a visit to the Lotte chocolate factory outlet.

Kok Tobe mountain: ascend via cable car to enjoy panoramic views of Almaty from above. you can visit Kok Tobe for a family picnic and to see the city , Kok tobe has a fountain of desire, which is in the shape of an apple, a climbing wall, an art gallery for the lovers of art, a tea house. in addition to these attractions, on the koktobe there are: viewing platforms, a petting zoo, a concert hall, a lovers alley, ponds, and shops selling national souvenirs.

Stay at Almaty.





DAY 5  **BREAKFAST**

Pack up your belongings and ready for check out from the hotel. Our vehicle will transfer you to the airport. On the way as per the flight schedule explore Almaty city and continue for your journey to home town with the unforgettable memories of Almaty Kazakhstan.





Beauty beyond the peaks

Inclusions:

- Airfare
- 04 Nights accommodation at Voyage Hotel or similar with breakfast
- All transfers and sightseeing in Pvt vehicle
- Shymbulak Mountain cable car tickets
- Kok Tobe cable car tickets
- Entry tickets for sightseeing
- Off road vehicle Charyn Canyon

Exclusions:

- Any meals not mentioned in the itinerary
- Travel Insurance
- Any activities not mentioned in the inclusions
- Any transport outside specified itinerary
- Any additional cultural experience or shows that may require extra payment



Terms and Conditions

Embrace Holidays reserves the right to amend, alter, postpone, or cancel any of the tours announced or advertised without assigning any reason. In case of a complete cancellation, the money paid by the tour participant will be refunded after deducting third-party or vendor booking charges such as air tickets. However, no compensation claims will be entertained.

In case of unforeseen situations, natural or man-made—such as acts of God, riots, wars, accidents, embargoes, terror attacks, coups, strikes, natural calamities, bad weather, or any unforeseen circumstances—premature cancellations or no-show will be entirely at the customer's risk, and no claim or refund for the same shall be accepted.

The company reserves the right to change, modify, vary, or alter the tour itinerary if it becomes necessary. In such cases, compensation or refund claims will not be entertained for limitations or for the non-availability of certain services, including parks, museums, restaurants, sightseeing, shopping, etc., even if they were included in the tour itinerary.

The tariff of the tour quoted is calculated based on the rates prevailing at the time of quoting. Embrace Holidays reserves the right to change the tariff in the event of any modification, alteration, change, or variation in said rates before the date of departure.

Tour tariff is based on departure from Cochin unless specifically mentioned otherwise as the boarding destination.

Group tour costs are based on a minimum of 20, 25, or 30 passengers traveling together, and a minimum number of FIT (Free Independent Traveller) tours is 2. In a group tour, if there is a drastic fall in the number of participants, the offered itinerary, meal plan, vehicle, and other services may change accordingly.

In case of non-availability of rooms in the same hotel, the company has the right to split the accommodation into different hotels for a group. Hotel accommodation is generally provided on a twin-sharing basis in standard rooms; the third bed is often a roll-away mattress placed in a twin-bedded room.

Single passengers must share a room either on a twin or triple-sharing basis depending on booking. If we do not have another single person to share with, an additional cost will apply.

Air-conditioning, central heating, and other facilities are provided by hotels depending on various factors including weather, climatic conditions, local systems, and tour type.

As a holiday company/tour operator, Embrace Holidays does not have any control over airlines, railways, coach companies, shipping companies, hotels, local transport, or any other services provided by third parties. The company is not responsible for delays or deficiencies in services provided by outside agencies. Please note that the company also has no control over holidays, schedule changes, opening/closing timings, or ticket rates of tourist attractions.

In the computerized reservation system of Indian Railways/Airlines, the berths/seats once reserved cannot be changed. Tour participants will have to travel in the same berth/seat as mentioned in the ticket issued by Indian Railways/Airlines.

The company shall not be responsible for any loss, damage, or injury to person, property, or otherwise in connection with accommodation, transportation, or other services resulting—directly or indirectly—from any act of danger, fire, accident, breakdown of machinery or equipment, breakdown of transport, wars, civil disturbances, strikes, riots, thefts, pilferage, epidemics, medical or customs regulations, defaults, or any other causes.

Tour cancellations or modifications by any participant must be sent via email to our official mailbox.

Please read our full Terms and Conditions, on: <https://embraceholidays.com/official/terms> **By purchasing/booking a service/product from Embrace Holidays it is assumed that you agree to these terms and conditions.**

Cancellation Policy

Period of Cancellation Cancellation Charges

Booking Advance	: 100% of the booking advance. (If not otherwise mentioned, the first payment shall be considered as Booking advance, exclusive of air, land and water travel tickets.)
46 days & above before departure	: 25% of the total tour cost or booking advance whichever is higher.
45-21 days	: 50% of the total tour cost or booking advance whichever is higher.
20 -15 days	: 75% of the total tour cost or booking advance whichever is higher.
14 -0 days before departure	: 100% of the total tour cost.

Air tickets taken separately exclusive of package cost : As per Airline policy / 100% non-refundable within 30 days.

Train /Bus / Ferry / Cruise tickets : As per the policy of the concerned provider.

Visa : Non-refundable.

Insurance : Non-refundable.

The above mentioned cancellation policy is applicable on total tour cost. GST & TCS to be paid additional over and above the cancellation charges.

Booking advance will not be refunded under any circumstances. In case of a part payment, whatever the amount paid at the time of cancellation will be considered as the total tour cost. It has been clarified that the cancellations are non-transferable and cannot be applied towards future bookings. Embrace Holidays reserves the right to modify the cancellation policy at any time, with or without prior notice, at its sole discretion.

* images are indicative only.

* All booking confirmations are subject to availability.

* For all claims, disputes of whatsoever nature relating to the tours the courts, forums and tribunals in Kozhikode alone shall have exclusive jurisdiction

Our packages does not generally include travel insurance. However, we strongly recommend travelers to get covered with a suitable travel insurance policy before they embark on their holiday trips. Contact us for any assistance in buying a policy from our empanelled Insurance Companies.



For bookings & more information :
Call : +91 7012 448 988, 952 600 1926

9/1585-B1, Second Floor, Reema Complex,
Post Karaparamba, PIN: 673010
Kozhikode, Kerala, India.
+91 9526001926, 97466 01926, 7012448988
info@embraceholidays.com, embraceholidays@gmail.com
www.embraceholidays.com

[f /embraceholidays](https://www.facebook.com/embraceholidays) [ig /embraceholidays](https://www.instagram.com/embraceholidays)

Bank Account Details:

Name : Embrace Holidays
Account No: 248905001333
Bank : ICICI Bank
Karaparamba, Kozhikode
IFSC : ICIC0002489



Transfer the money to the given bank account. You can use Bank Transfer through NEFT, RTGS or any UPI platforms.

