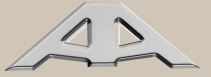


**ASTONDOA**  
YACHTS







# 53 HardTop

## SPECIFICATIONS

<b>BUILT</b>	<b>LENGTH</b>	<b>ENGINES</b>
2009	17.50m	2 x 1050hp MAN
<b>REFIT</b>	<b>BEAM</b>	<b>CRUISING SPEED</b>
2023	4.60m	26 knots
	<b>DRAFT</b>	<b>Max.Speed</b>
	1.10m	35 Knots

## DESCRIPTION

The 53HT is the latest incorporation to **Astondoa's** exclusive Hard-Top range. A line of boats with an avant-garde, sporty and captivating character.

It is a yacht with clean, sporty lines that flow along the length of the boat, with a suggestive and provocative profile.

The large bow, a hallmark of the range, and the large glass surfaces that blend in with the very lines of the boat, creating a unique silhouette in its segment of size that will be the centre of attention wherever it goes, stand out.

These large windows not only stand out for their beauty, but also for the integration of the sea into life on board, which, together with the retractable sunroof, and the hydrolic swim platform will make the experience on board the 53HT

## ACCOMMODATION

**GUESTS** 10 [day] **CABINS** 3 **CREW** 2













