



Aberhafesp Community Association

NEWSLETTER

Charity No.1043185

Spring 2026

FROM THE CHAIR

4:04 a.m. that is. The burden of writing this is starting to weigh a bit, though it's not that there isn't a choice of topics; far from it, there's too much stuff out there. Unfortunately a lot is negative. But the (self imposed) rules of fairness, interest (hopefully), relevance to our community and non-political (impossible but worth a try) tend to restrict my musings. Some things I cannot comment on.

The Middle East: An exercise in insanity? Like the fact that the amount of money we pay for fuel, fertilisers and ultimately food, mortgages, plastics etc. etc. is dependent on who controls a 24 mile stretch of water (Straight of Hormuz) No, can't discuss. It's political.

Net zero: The Environment has been politicised despite being the most important thing we have. Oops. Just strayed over a boundary there. So that's another no to anything more here.

Local high schools: Newtown and Llanfair have come out of special measures whereas Llanidloes joins Welshpool in being in special measures. It appears Powys Education has some serious underlying problems. It would be good to know what's happening as these are catchment schools for our young people. Comments anyone? You guessed it, nothing more from me on this.

Newtown Health and Wellbeing Hub: This will offer – for an estimated £30m - lots of good things (!). Yet we have to travel to Swansea if we have a stroke, Birmingham for serious cancer treatment, Shrewsbury or Aberystwyth for some treatments Would someone like to pick this one up and find out what's going on? £30m would buy a lot of good hospital facilities around here. Instead it seems to be being earmarked to replace existing facilities. (What will happen to the Newtown Library for instance?)

Air Ambulance update: In brief, a couple of things have happened since the last Newsletter edition. (I can comment on this one!)

1. The proposed site chosen by the Air Ambulance charity up in Denbighshire (between St Asaph and Holywell) has met with local opposition on a number of fronts (lack of consultation, quiet neighbourhood, development disturbance etc.). The lack of consultation claim gives further evidence that the Charity has always, for some reason, had a predetermined outcome on their efforts to close the Welshpool and Caernarfon bases. There is apparently an existing and now unused police helicopter base in Rhuddlan, all of about 5 miles from the proposed site.
2. The proposed new [Newtown Health and Wellbeing Hub](#) makes no mention of it being a base for the proposed rapid response vehicles promised by the Powys Health Board to replace the air ambulances. Strikes me that this is an opportunity missed.

At our local **Community Centre** level, things are very solid indeed thanks to continued effort by some good people. Thanks to the organisers, helpers and everybody else involved, but especially visitors who have come to Bingo, Rory and Stuart, Hywel & Johnny, the Wander-Inn, watched 6-Nations rugby (Mr Chef person... Big Thanks for food) ... And a special mention to ME for Defib and First Aid things, and Alison for gardening.



Thanks to Nigel, Perry and Dave for the massive tree pruning shift and Steve Pryce for brush removal. Help yourself to wood (if there's any left at the Centre).

I look forward to seeing you at one of our regular events, the Coffee Morning (18th April), at the live music gig with Jeb & Clovis on Saturday 25th April or even at the Ceilidh with local band Ffonic on Saturday 27th June.

And anyone who wants to replace me writing this is more than welcome! I'll sleep well tonight.

John Bateson: ACA Chair

RECENT EVENTS

(you might have missed)



Kinga Kuciel, Stuart Jones, Marilyn Bedworth, Rory Evans and John Bateson accepting a £400 donation for NFS raised from an evening of Stories and Music at Aberhafesp Community Centre on 17th January.



Tickets were sold out well in advance



A member of St John Ambulance Caersws provided a refresher CPR and Defibrillator course on **SATURDAY 28TH MARCH**

FUTURE EVENTS FOR 2026

FORTNIGHTLY

Good Friday 3rd APRIL

We are celebrating with a Chocolate Theme, plus a raffle.

The BAR opens 6.00 pm

EYES DOWN 7.30 pm

£10.00 A BOOK of 8 games including the snowball currently at £200

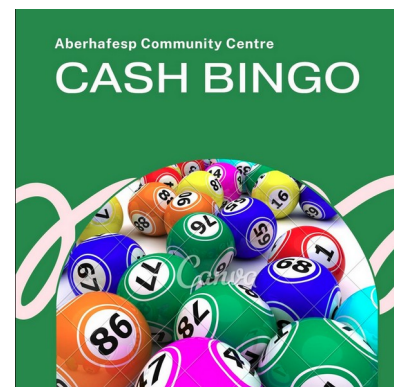
Plus 1 game of Irish Bingo

Dig out your **best bunny ears or chicken costume (optional)** and get into the spirit.



Come along for a brilliant Community evening and the chance to win **cash prizes**. Hop on over and join the fun

CASH OR CARD PAYMENTS





SATURDAY 18th APRIL

10AM – 12 NOON

POPULAR BACON BUTTIES £2.50p EACH

RAFFLE/ CAKE STALL

£2 ENTRY

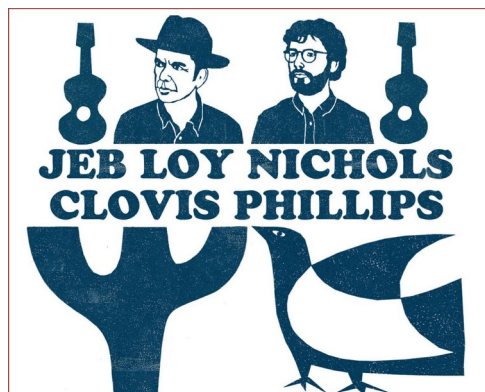
INCLUDES TEA/COFFEE/HOT CHOCOLATE AND A PIECE OF TOAST

LIVE MUSIC

SATURDAY 25th APRIL

at the Wander Inn Pub

Tickets £10

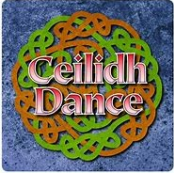


**Available from ACA.WALES/WHAT'S ON
or Ticketsource**

Doors open at 7.00 pm Starts 8pm

The USA born but Wales based songwriter, author, printmaker and "high priest of country cool" (Rolling Stone) Jeb Loy Nichols, returns in Spring 2026 with his new album 'You Know Where I Live', an inspiring collection of new material produced by longtime collaborator Clovis Phillips. Join one of the UK's finest songwriters and a bonafide Country (Got) Soul legend for this special intimate performance of songs from the new album and a selection from Jeb's extensive back catalogue. Expect a night of soulful acoustic music that feels like a conversation among friends.

SATURDAY 27TH JUNE



**LIVE music from
local band
Details to follow**



Planning Application 25/1690/FUL

You may be interested to learn of a planning application at 'Land South of Bwlch y ffridd, SY163JN'. A developer from the West Midlands has applied to Powys County Council for permission to build four A-frame holiday lodges with swimming pools on a hillside above Bwlch y ffridd. This proposal represents a significant change in scale and character from what was previously agreed in what is currently a quiet rural landscape. It raises many concerns such as light and noise pollution, impact on wildlife and ecology and road safety. To get a flavour of the type of developments currently operated by the applicant you can view some of their existing properties here:

<https://www.tiktok.com/@>

How to View the Plans: You can view the full planning application on the Powys Planning Portal:

<https://en.powys.gov.uk/> Search using postcode: SY16 3JN

How to Submit a Comment

1. Open the application on the planning portal
2. Click the "Comments" tab
3. Enter your details (*these are not publicly displayed*)
4. Select the issues that concern you
5. Add a short explanation in the comments box

Even a brief comment helps ensure your local views are considered.

Need Help Submitting a Comment?

If you do not have internet access or would like help submitting your views, please get in touch.

Contact Lynne 01686 651245 or email patbeck99@gmail.com

Thank you for taking the time to consider this.

SPUD IN A BUCKET COMPETITION

Collect your bucket and spud for £5

Available from the Wander Inn Friday nights at the Community Centre or contact chair@aca.wales

Spud weigh-in will be held on a

Friday 11th September

alongside a **DUCK RACE & BBQ**

Prizes: Honour (!), trophy, multiple categories including: Highest overall

weight (adult), same (school age), ugliest, worst excuse



JOIN US REGULARLY AT



THE 'WANDER INN' POP-UP PUB

EVERY FRIDAY EVENING

TABLE TENNIS/DARTS/DOMINOES/POOL

from 6.00 pm till late

FRIDAY MORNING POP-UP



10am - 12 noon

2nd and 4th Friday of each month

A warm space to meet and chat

USE IT **or** LOSE IT!

GENTLE CHAIR EXERCISE

2nd and 4th Friday of each month

12.15 to 1.15 pm

After the pop-up coffee mornings

What is involved? Mild stretching and exercises are designed for **ALL**, (not just the ladies) but especially for those who are having

(or starting to have) reduced mobility. **What do I need to**

bring?: Nothing. Comfortable clothing and footwear are advised.

How much does it cost? £3 per session.

Cymraeg

DYSGU SIARAD CYMRAEG

Are there any **Welsh Language Learners** out there who would like to meet up with a few Welsh speakers to practise conversational Welsh?

If interested, we meet at the Aberhafesp Community Centre at the Friday Pop Up Coffee Mornings at

11.00 am on the 2nd and 4th Friday of each month. FOC
We would love to see you.



WEDNESDAY EVENINGS IN TERM TIME

£7 PER PERSON

6.30-7.30PM

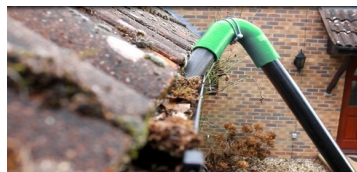
ALL WELCOME

(ANY AGE, ANY FITNESS LEVEL)

JUST TURN UP AND PAY ON THE NIGHT

BRING A YOGA STYLE MAT IF YOU HAVE ONE

FOR MORE DETAILS CALL SIAN 0776660676



**Get your gutters cleared from the safety of the ground.
Reaches over conservatories and all those awkward places.**

No more ladders.

**Telephone: Nigel Hamer 07870220845 Covers Newtown and
surrounding areas**



April is Parkinson's Awareness Month

This is a global initiative aimed at raising awareness about Parkinson's disease, which is a progressive neurodegenerative disorder that affects movement, cognition, and daily functioning. The month includes events like **World Parkinson's Day on April 11th** and Parkinson's Awareness Week from April 7th to 13th.

Around 166,000 people live with Parkinson's in the UK. Parkinson's is on the rise. In the UK today, someone is diagnosed every 20 minutes. By 2050, the number of people with Parkinson's worldwide will double to **25 million**.

The 2026 theme is **Mind Over Matter**; raising awareness of the importance of prioritising a healthy mind whilst living with Parkinson's. We are encouraging everyone to do something to improve your mental health with Parkinson's or to fundraise or donate to support the Parkinson's Mental Health Support Hub.

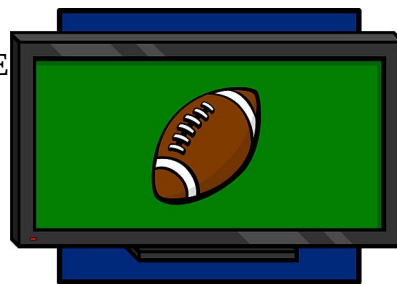
Note: Most people with the condition are aged 50 or over, but younger people can get it too. Young onset Parkinson's, disease (YOPD) means you have Parkinson's, but have been diagnosed at an early age and is defined as accounting for about 5-10% of cases.

TV EVENTS

WE WILL OCCASIONALLY BE BROADCASTING EVENTS LIVE ON OUR 85 INCH TV (WHEN THERE IS DEMAND)

THE FIRST OF THESE WAS THE WALES V ENGLAND SIX NATIONS RUGBY GAME ON THE 14TH MARCH.

A great afternoon was had by all attending except for the result (unless you are English)



Spring 2026 News Bulletin

The Game Change Project CIC is a community organisation based in Aberhafesp that supports young people through mentoring, practical activities, and positive outdoor experiences. The project helps build confidence, improve wellbeing, and create opportunities for young people to thrive in a safe, supportive environment.

Community: Our young people have been involved in designing a beautiful sculpture featuring two swans, in partnership with Open Newtown and artist John Meril. The sculpture will be installed later this year as a feature of the Trehafren Fields Woodland Wander Trail.



We were also delighted that some of our young people had the honour of meeting the Prince and Princess of Wales during their recent visit to Newtown.

Animals: We are pleased to welcome the newest members of our animal team: four 'degus', small South American rodents adopted from Creature Comforts Animal Rescue. Our groups also enjoyed a visit to a local farm, where they were able to help with lambing and experience life on the farm firsthand.

Fundraising: We are currently appealing for volunteers to join our fundraising committee and help us plan and organise fundraising activities throughout the year. We would also love to hear from anyone interested in taking part in challenges or sponsored events to raise money for The Game Change Project.

More details can be found on our [Localgivingpage](#)

You can also support us through Texaco Star Rewards by donating your points to The Game Change Project at Caersws Petrol Station.

Upcoming Events:

Hoe Down 13 June at Llanidloes Rugby Club

7.00pm until late Tickets: £10 : Available from Claire Miller: 07407 094786

Online Pet Show

Enter photographs of your cute pets to win prizes and help raise money for our cause. Find out more on our Facebook page:

facebook.com/thegamechangeproject

A huge **Thank You** to everyone who has supported our cause so far. Your generosity is greatly appreciated and helps us continue to offer a lifeline to local young people.

Volunteers Needed: If you would like to volunteer as a mentor at the project, we would love to hear from you.

Contact: sian at sian@thegamechangeproject.org

Please visit our website for more information www.thegamechangeproject.org.



DLM EAR CARE Is running Earwax removal clinics in Aberhafesp Community Centre



Did you know that symptoms of excessive earwax may include the following:

Hearing loss?

Sense of ear fullness?

Itching in the ear?

Earache / blocked ears?

Ringling / buzzing (tinnitus)?

Vertigo (feeling dizzy and sick)?



DLM Ear Care can remove any excess earwax which may help to alleviate the symptoms listed above

Call or email us now for an appointment: **07359541341**

reception@dlmearcare.co.uk [Facebook](#)

VICKERS
Tree Surgery
& Arboricultural Services
01686 650514

A.L.Benbow The Office,

Waen Madoc,
Aberhafesp,

Newtown SY16 3LR

albenbow@hotmail.co.uk



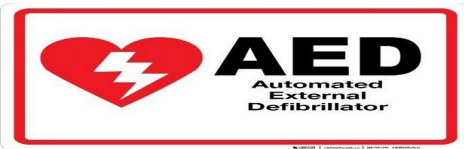
07929 313167

A L Benbow is a general builder with over 40 years' experience. All building work undertaken, to include but not limited to:

- New builds
- Renovations
- Barn conversions
- Garage conversions
- Extensions

LOCATIONS OF OUR THREE LOCAL REGISTERED DEFIBRILLATORS AND PROCEDURES

ENTRANCE TO HILLCREST, ABERHAFESP SY16 3JR	ON THE WALL OUTSIDE THE COMMUNITY CENTRE SY16 3HT
INSIDE THE OLD PHONE BOX IN BWLCH-Y-FFRIDD SY16 3HX	



To access the AED box, you have to **phone 999 or 112**

Request an ambulance and tell them your location (see above for post code of the nearest defibrillator). Ambulance control will give you a **CODE to open the defibrillator box**

(Note: the code for the Community Centre defibrillator is displayed inside the building) Follow the instructions. Paramedics will be on the way to administer the next stage of the resuscitation process. Due to insurance purposes, the Code is not displayed on the boxes

HAMERBUILD

Nigel Hamer General Builder

Home Maintenance Bwlch-y-Ffridd

Supporting the Aberhafesp Community newsletter



ST. GWYNOG'S CHURCH



Fair Trade Coffee Morning

After a well-earned rest for the volunteers in January, we continue to enjoy the first Saturday mornings of the month at our coffee mornings. The next one is **5th April**.

We thank everyone for their generosity. We love seeing new faces and old, our last event bringing in 40 customers and 2 dogs!

Snowdrop Tea

We held a very successful snowdrop tea in February raising £300 for Ponthafren. We shall be handing over a cheque to them when they come to speak to our Mothers Union in March. The weather was cool but remained dry allowing people to take photos of the beautiful carpet of snowdrops, many of whom had travelled from far and wide, only visiting our Church annually for this event.

Thank you to all who prepared and served food and for all our support this wonderful occasion.



We had a lovely **St David's Day** service led by Nia, followed by refreshments comprising Bara Brith and Welsh cakes made by Pam and a Teisen Lap cake made by Christine. Many of us were not familiar with Teisen Lap, a very tasty traditional moist spiced fruit "plate cake" or tea loaf, historically popular in South Wales coal-mining communities.

Richard Bresnen: Vicar's Warden

richard.bresnen@gmail.com 01686 420208 / 07595 349940

LOCAL TRANSPORT SCHEMES

If you are elderly, disabled (young or old) or just have mobility problems

Then you need the

DIAL-A-RIDE

Membership scheme

**Old Brew House, Ladywell Centre,
Newtown, Powys, SY16 1AF**

Website

(Facebook)

Charity No. 1005861

We are a charitable organisation that was set up to transport the Elderly and Disabled in Newtown and surrounding areas. We have several wheelchair accessible minibuses and fully trained staff. If you would like to know more call us on 01686622566.

£10 per year plus a small fee per journey on our fully accessible minibus, operates Monday to Friday between the hours of 9am to 5pm within a 15 mile radius of Newtown

COMMUNITY TRANSPORT SCHEME

This is not a membership scheme. It is a scheme you can use at any time. You call **01938 554484** to request a quote for the journey you need. 9.30-14.00. Monday/Tuesday/Thursday/Friday email: nmvbtransport@hotmail.co.uk.

Try to give them as much notice as you can. They charge 50p per mile. The volunteers use their own vehicles and will take you on local journeys but can also take you further afield.

NON-EMERGENCY PATIENT TRANSPORT

Patient Transport to Hospital services in Wales and parts of England (Royal Shrewsbury Hospital/Princess Royal Hospital Telford) Please call **0300 123 2303**

Patient Transport to the Robert Jones & Agnes Hunt Orthopaedic Hospital (Gobowen)

Please call E-zec on **0300 777 0077**

Patient Transport to Hospitals & Clinics in Herefordshire.
Please call the Powys Teaching Health Board Therapies Hub on **01686 613200**

SHORT MAT BOWLS



Our 2025/2026 season has come to an end. Our club nights have been well supported throughout the winter with an average of eighteen players attending and our in house pairs competitions have been enjoyed by all our members. We have played in the Sir Drefaldwyn League, entered teams for all the Saturday competitions and hosted the Pairs competition in Aberhafesp in November.

This year we entered a team in the Montgomeryshire Challenge Cup, a new venture for us. We reached the semi finals but lost to Welshpool team containing Welsh International players who were shortly off to Norway to play in the World Short Mat Championships. We gave it our best and enjoyed the experience. To end the season members and partners enjoyed our League Sunday Lunch and Presentation afternoon at Arthurs Restaurant, Trefeglwys and the following week we had our own end of season meal at Lakeside, Garthmyl.

We look forward to welcoming everyone back in September.

Contact Elaine Benbow 01686 625586

COMMUNITY COUNCIL

Aberhafesp Community Council covers the area of Aberhafesp, Bwlch-y-Fridd, Bethel and Rhyd-y-Felin.

Meetings are held on a **Wednesday evening in the Community centre**, and members of the public can attend any meeting, unless otherwise specified. If you have an item that you wish to add to the agenda, please contact the clerk Rachel Hamer on aberhafespcommunitycouncil@hotmail.com

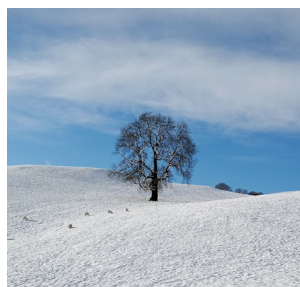
ACA PHOTOGRAPHY COMPETITION



**WINNER of the 14 entries in
the Spring Competition
SUBJECT: WINTER WONDERLAND
Jemma Hopkins
Prize £10 Wander Inn
Voucher**

Sunrise (or Sunset) over snowy fields with sheep. Very good capture of light. Would actually be quite a nice photo for the person taking it to hang on their wall and be satisfied with.

2ND – Lynne Beck:



Nadolig Llawen, Tree in centre of picture of snowy fields and sheep. Good use of light and again, something that the image-taker may want to print and hang on their wall.

3RD – Marilyn
Bedworth



Ladies and children + Santa in Christmas Grotto. Never easy to get a group of children to all have the "right" facial expressions - and perhaps Santa had a hard day and wasn't smiling. Lighting isn't particularly good, but commercial Santa's Grottos can often be quite dark and difficult to photograph.

4TH – Mark &
Vanessa Crawley:



Collie/Sheepdog standing in Snow. Quite cute, but photo not really as "Sharp" as it could be. Lovely expression on dog's face (Someone may have been holding a treat !)

Note from the judge: Thank you to everyone who took the time to enter the Photo Competition again. Just because you didn't make it into the final 4 should not be a reflection on your own photography, it's simply a personal opinion. The first and second places were really good because of the way light and colour appeared in the images, as well as how sharp (focused) they appeared. Please carry on taking photographs and enjoying looking at images which mean something to you ! . . . and entering the competition as well !

THE NEXT PHOTO COMPETITION

SEND YOUR ENTRIES

NEWSLETTER@ACA.WALES

NO LATER THAN 1ST JUNE 2026

SUBJECT: **LIFE ON THE LAND**



Philip Curnow Photography



Specialists in Commercial, Advertising, PR, Promotional, Sports and Event Photography. Full Nationwide Coverage.

Bryn y Groes, Aberhafesp, Newtown, SY16 3JQ

01686 688235

07734312180

www.philipcurnow.co.uk

<https://www.philipcurnow.co.uk>

Vid2Usb

Professional Media Transfer Services

*Dont let those Video memories fade away.
Let us bring them to life on DVD or USB for you to re-live.*



Speedy Service

Quality Assured



Call: 07713 024470

[See our Facebook page](#)

Caws Gynog



*Handcrafted cheese from the
heart of mid-Wales*

Blackhouse Commoner
Cow's milk cheese
Pasteurised • Semi hard
Medium, fresh & tangy



Gilfach
Sheep's milk cheese
Pasteurised • Semi hard
Rich, creamy & nutty



www.cawsgynog.co.uk

<https://cawsgynog.co.uk/>

**Good Quality
Topsoil
For Sale**

Collected or delivered
Phone
Steve Pryce

**01686
688425/07802846487**

SP Waste Disposal

Domestic septic tank emptying
Drain unblocking
High-pressure jetting/washer
200-gallon tanker hire
Septic tank installation and
maintenance
All areas covered
Call for a no-obligation quote or
advice **01686
688425/07802846487**

200 CLUB WINNERS – drawn on Sunday 22nd March		
£50	Oakley Richards	Aberhafesp
£25	Brian Davies	Bwlch y Ffridd
£25	Smike Richards	Aberhafesp
£25	Zena Hamer	Caersws
£25	Gerard Bland	Hillcrest
£25	Steph Benbow	Aberhafesp
£15	Mr & Mrs. Edward Parry	Aberhafesp
£15	Gareth Jones	Llanwnog
£15	Jayne Graham	Bwlch y Ffridd
£15	Gwyneth Jones	Newtown

YOUNG FARMERS

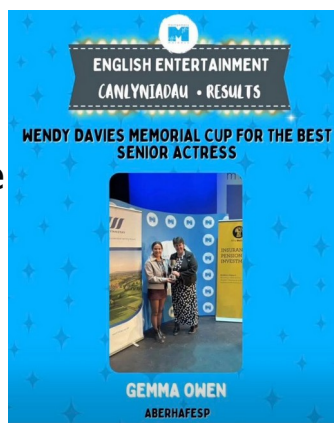


Back in February we performed our YFC half hour entertainment along with Dolfor & Mochdre/Penstrowed called "Hafesp Hospital Radio". We came away with 5th place out of 10 and our very own Gemma Owen successfully won senior actress. We were also nominated for the adjudicator award with our scene of 'XYZ' and Jamie Owen & Lloyd Davies were also nominated for senior actors.

May we take this time to thank the community centre for allowing us to store our scenery there, whilst practising and to thank the bowling club very much for allowing us a to use one of their nights. We do greatly appreciate it.

We are currently sorting out our club nights for the next few months.

As always if there is anyone interested in joining our YFC club, please get in touch with [Lucy Jones 07455354045](mailto:lucyjones04@hotmail.com)
lucyjones04@hotmail.com





Tickets £5 each available at www.jumblebee.co.uk/longestyarn2welshpool

NEWTOWN FOOD SURPLUS

THANKYOU TO OUR FOOD SURPLUS PARTNERS
63.5 tonnes of food saved in 2025

*Based on weighed surplus collections



Could you spare a couple of hours to help us stop good food going to waste? ❤️ We're looking for people to join our team in Newtown. Helps us maximise the amount of food reaching bellies, not bins. If you'd like to join our friendly team, please message on

[Facebook](https://www.facebook.com/nfs.wales) or email info@nfs.wales
See our [website](http://www.nfs.wales)

MOTHERS' UNION

The Aberhafesp Branch of the Mothers' Union started 2026 with a belated festive meal at Themes restaurant at Coleg Powys in Newtown. With the addition of invited guests we increased our numbers and had a most enjoyable lunch together.

This was followed on the 19th February by the Branch's Annual General Meeting. It was held at 3:00pm and was lead by Mrs.Christine Cooper. After opening prayer it dealt with the appointments of various positions of responsibility including secretary, leader, treasurer and other roles. Fortunately most positions were carried over into 2026 from the previous year.We ended the meeting with tea, biscuits and a chat.

On Sunday 15th March we celebrated Mothering Sunday with a Holy Eucharist service at St. Gwynog's Church Aberhafesp. Stephanie Benbow was enrolled into the Mothers' Union and Carol Gough and Dy and Glyn Evans were welcomed into the Mothers' Union but are awaiting enrolment.

All present were given Mothering Sunday bookmarks as a token to remember the occasion by Reverend Chris Turner.

On March 19th 2026 the meeting, lead by Barbara Moelwyn-Williams, started with a warm welcome to all present. A short service with a Bible reading by Peter Thompson and prayers, which included thanks for the 150 years of the Mothers' Union and its founder, Mary Sumner, followed. A short business meeting gave dates and details of the celebrations of 150 Years of Mothers' Union to be held in All Saints Church, Newtown on May 7th and at St.Asaph's Cathedral on Lady Day, 25th May 2026. Afterwards, the speaker for the meeting, Rachel Harris from Ponthafren, Newtown, was introduced by Pam Thompson. Rachel told us all about how Ponthafren strives to help people in the Newtown area who need help with their mental health.The range of ways that the trained staff employ to help people of all ages with their individual needs is quite remarkable. Rachel gave an informative and, at times, amusing talk. Ponthafren staff often help in practical ways – such as moving a number of meerkats! - in an attempt to remove a problem before addressing the real issue. Rachel kindly answered many questions after her talk and Pam presented her with a cheque of £300 from the Aberhafesp Church Snowdrop Tea Fund.

Raffle tickets were sold by Liz Davies and the winner of the prize was Peter Thompson.

The next meeting of Aberhafesp's Mothers' Union is on Thursday April 16th at 3:00pm in the Church Room at St. Gwynog's Church. Anyone interested in finding out more or joining our MU Branch please get in touch. *Barbara Moelwyn-Williams Tel: 01686627329*

WOMEN'S INSTITUTE

Aberhafesp WI continues to be well attended with some very interesting speakers to be heard. We have welcomed some new members which is great. Our meeting in January had to be unfortunately cancelled due to the snow, however we did get together for our annual meal at Lakeside which, as usual, did not disappoint. In February we were entertained by Michael Cheshire and his wife who came to share his knowledge on the Bayeux Tapestry which was extremely interesting and inspiring, it should be well worth a visit when it opens in the British Museum in September. We presented Jean Jones with a voucher as our monthly competition winner for 2025. In March Grace and Robert Davies gave us a fascinating talk on Healing Flowers as they are Bach Flower practitioners, they offered consultations after for anyone who wanted. We finish our evenings with tea, coffee and biscuits as an opportunity to catch up with each other. We have finished our darts games but did not reach the final however the darts competition is going well. We are a friendly bunch who are welcoming to anyone who would like to join us at any of our meetings where we provide a varied programme of speakers throughout the year. We meet in Aberhafesp Community Centre at 7pm on the first Thursday of each month.

April 2 nd	Household Bygones	Eira Humphries
May 7 th	Health Falls Prevention	Erin Hugo
June 4 th	Local Artist	Brian Jones
July 2 nd	Visit to New Hope Daylilies	Bishop's Castle
August	Holiday	
September 3 rd	Visit Pentre Llifior Chapel + meal tba	Bettws Cedewain
October 1 st	50 th Anniversary celebration	
November 5 th	AGM + jigsaw race	
December	Christmas Floral Arrangements + bring and share supper	Kara Smith

For further information contact jo_burrage@hotmail.com (Secretary) or Steph Benbow (President) 01686629572

COMMUNITY CENTRE / EQUIPMENT HALL HIRE

If you are arranging a family event, children's party, funeral tea, or a meeting, our community centre building, marquee and gazebo are all available for hire. There is a fully functioning kitchen and a fully adjustable event lighting system, modern PA system with hearing loop, high speed broadband and large 80+inch TV. The systems can be linked using Bluetooth. Residents are also able to hire tables and chairs for private off-site functions. See below for contact details. [Booking forms are available on the ACA website](#)

GENERAL DATA PROTECTION REGULATION (GDPR)

Residents and friends of Aberhafesp, Bwlch-y-ffridd, Bethel, Rhydy-Felin have submitted their email addresses to the editor of this newsletter giving permission for the distribution of quarterly issues of the newsletter plus occasional emails giving additional local news and/or information. Consent for the use of personal details to be held for this purpose can be withdrawn at any time.

ADVERTISEMENTS

In order to keep the cost of printing newsletters at a minimum, we are very grateful to local businesses supporting us by advertising. We are also very pleased to have the use of the printer owned by the [Cedewain Mission Area](#). Send details to Newsletter@aca.wales

Annual cost of 4 quarterly issues



Quarter page black & white	=£25
Quarter page colour	=£35
Half page black & white	=£35
Half page colour	=£45
Full page black & white	=£65
Full page colour	=£85

NEXT EDITION

You can read this and all previous editions of this newsletter online at the ACA.WALES [website](#). The next quarterly issue of this newsletter will be published in **July 2026**.

Please send any articles of interest to the editor

(newsletter@aca.wales) no later than the **15th June**

Also: If you usually receive this newsletter as a printed copy through your letterbox and you have an email address, please let the editor know so that we can save on the cost of printing.

ACA CONTACTS

Newsletter Editor	Marilyn Bedworth newsletter@aca.wales	07734329941
Chair	John Bateson Chair@aca.wales	07799881851
Treasurer	Cheryl Bridle treasurer@aca.wales	07976262932
Secretary	Stephanie Ibbotson steph.ibbotson@hotmail.com	07944584576
Hall Bookings	Graham Green graham.green2@btinternet.com	07596972639
Marquee/ gazebo Hire	Nigel Hamer nigelhamer68@hotmail.com	07870220845
Community Council Chair	Alwyn Nutting glascoed1@gmail.com	01686650862
YFC Chair	Kyle Connolly kyleconolly02@hotmail.co.uk	07748459841
YFC Sec	Lucy Jones lucyjones04@hotmail.com	07455354045
W.I. President	Stephanie Benbow steph.benbow@outlook.com	01686629572
Mother's Union	Barbara Moelwyn-Williams b.moelwynwilliams@btinternet.com	01686627329
Short Mat Bowls	Elaine Benbow elainebenhow@hotmail.com	01686625586

This newsletter can be accessed from our [Facebook page](#) and the [ACA website](#)

