



ABERHAFESP COMMUNITY NEWSLETTER

Charity No. 1043185

Summer 2023

ABERHAFESP COMMUNITY CENTRE

The highlight of the summer was the Coronation tea on the 7th May, very well attended, and enjoyed by all. We teamed up with St. Gwynog's church to produce the food, having lots of fun with our usual sandwich production line, being butterers, filler and cutters up, making large and various quantities. Many made cakes and scones, and the whole tea was laid out in the early afternoon, masterminded by our amazing Glenys, and looking, as usual, worthy of The Ritz.



A large cake made by Grace Barfoot, was decorated as a Union Jack, using raspberries and blueberries, and cut by Michael Jones and Gaynor Davies. Peter Pike gave a very appropriate grace, and the whole hall was decorated with bunting and helium balloons, an occasion to be long remembered by the 100 plus people who attended!

Thanks to the Newtown Morrisons Community Champion for once again donating plants to fill the tyres at the entrance to the centre.

On June 24th we had a coffee morning to raise funds for the hall, also very well attended, many people enjoying long chats, along with their bacon butties. We had a very successful raffle: Christine Green's plant stall, Ann Griffiths with books and fancy goods, cake as always (thank you!) by Elaine Benbow, and John Bateson with tools and his home made cheese, very delicious, and enjoyed with friends in my garden that evening, with caramelised onion chutney! Thank you to Bill and Carol Gough and Roger Stone for doing the raffle, and thanks to them for doing it so many times! Much appreciated.

As I, and Joan Michel and Edward Parry, stand down at the AGM in July, it is now an appropriate time to thank you all in the community for your marvellous support over the last seven years, given unstintingly with various jobs, even ones like scraping the car park of moss! To Joan and Edward I give thanks for their great support and hard work as Secretary and Treasurer. Joan has been to my place every Tuesday before committee meetings, to help plan them, and work out agendas, and it has always been fun. Joan has also been so good at getting grants, and liaising with various organisations “online” for help for us. Edward has handled the accounts so very ably, and done a great deal of unsung work, and thanks to him for being so good at keeping us “in the black”.

I must also thank this grand committee for all the help they have given me, with special mention to the “kitchen staff” stalwarts, Glenys, Margaret Pugh, M.E., and Joan Michel, also many others on occasions. Thanks to Graham Green for dealing with the hall bookings, and doing so much more to help, also helping his wife Christine, who works so hard to keep the whole hall pristine, and sparkling, even when having three big functions in one week, and in spite of not being very well. Thanks to Nigel, a tower of strength, and helps in so many ways from time to time in minor crises! He also runs the “pub” very ably with his wife Rachel, and this is a real asset to us. I hope, and think, he does enjoy this job!

Thanks to Marilyn for starting and continuing to compile this excellent newsletter, so very ably, and so enjoyable to read.

Finally, thank you everyone for making me, an “outsider” so welcome in the village. It has been a great privilege to do the job as chairman, and so very enjoyable. Best wishes to the new “three” as they take over. We shall all continue to help and join in as best we can. *Maddy Thornton.*



Two flowering cherry tree saplings were planted on the 4th February at the community centre donated by the Hafren Trefoil Guild. One to celebrate the platinum anniversary of Queen Elizabeth 11 and a second to commemorate her death. Members of the Guild planted them with the help of members of the community centre

committee. From left to right are: Heather Parry, Mary Davies, Shirley Blanchard, Pauline Owen, Maddy Thornton, planting the tree is Gwyneth Brown, Joan Michel and Glenys Pryce.

ANNUAL GENERAL MEETING

THURSDAY 13TH JULY

7PM AT THE COMMUNITY CENTRE

If you are interested in developing our community by taking an active part in decision making with innovative ideas for the future then please join us

**JOIN US AT THE
'WANDER INN'
POP-UP PUB**

**FRIDAY EVENINGS
BAR/TABLE
TENNIS/DARTS/DOMINOES
from 6pm**



**FRIDAY
MORNING
POP-UP**

10-12 noon

**A warm space to meet and chat
2nd and 4th Friday of each month
(subject to occasional change)**



**Get your gutters cleared from the safety of the ground
Reaches over conservatories and all those awkward places**

No more ladders

**Telephone: Nigel Hamer 07870220845
Covers Newtown and surrounding areas.**

WHAT 3 WORDS APP

Download this [FREE APP](#) that is designed to identify any location on the surface of Earth with a resolution of about 3 metres. The system encodes geographic coordinates into three permanently fixed dictionary words. Street addresses aren't accurate enough to specify precise locations, such as building entrances, and don't exist for parks and many rural areas. This makes it hard to find places and prevents people from describing exactly where help is needed in an emergency. What3words makes it easy to find, share and save precise locations.

Get help faster in an emergency

When it's hard to describe where you are in an emergency, you only need to read out three words for 999 to know exactly where to find the incident.

Get deliveries exactly where you want them

Many leading retailers accept what3words addresses on their checkout pages. When you spot one, enter your what3words address for a smoother delivery.

Plan activities and share locations

Join the runners, hikers, cyclists and bird watchers using what3words to share the precise starting points of activities as well as their favourite spots. To make life easier and less frustrating, always ask for or share a what3words address.

Find any destination in the world

From walking trails to incredible viewpoints – you can use what3words to save and share the exact locations of hidden gems with friends and followers.

LOCATIONS OF OUR THREE LOCAL REGISTERED DEFIBRILLATORS AND PROCEDURES



To access the AED box you have to **Telephone 999 or 112**

Request an ambulance and tell them your location (see below for post code of the nearest defibrillator) Ambulance control will give you a

CODE to open the defibrillator box

Follow the instructions. Paramedics will be on the way to administer the next stage of the resuscitation process.

Due to insurance purposes the Code is not displayed on the boxes

ENTRANCE TO HILLCREST,
ABERHAFESP SY16 3JR

ON THE WALL OUTSIDE THE
COMMUNITY CENTRE SY16 3HT

INSIDE THE OLD PHONE BOX IN BWLCH-Y-FFRIDD SY16 3HX

We must continue to raise money to fund this vital equipment

NSA WELSH SHEEP

The National Sheep Association Wales at Red House farm, 16th May 2023

This was previewed in the last newsletter and here is a brief report based on the visit Heather and I made to the event.

The weather fortunately was lovely, dry and warm – a wet day would have made for problems parking the hundreds of cars that almost filled a large field by the roadside. We weren't sure what to expect, lots of sheep obviously, but this was more like a full-scale agricultural show. There were numerous trade stands, representatives of specialist organisations connected to farming as well as a series of well-attended seminars. Visitors enjoyed displays of farm machinery, sheepdog trials and very busy refreshment trailer.

The site at Red House was very well-suited to the occasion: on a gentle hill overlooking the Severn with large sheds, emptied of animals (except for some very impressive bulls), it provided lots of space for exhibitors and the roads through the farm were ideal for the tractor-and-trailer farm tours which proved to be hugely popular. It was also encouraging to see a number of school parties being shown round.

Huw, Sioned and Dafydd Owen worked very hard with the organisers to set up such a prestigious and successful event; everyone involved was delighted that it attracted over 3,000 visitors. I am sure that all of them were impressed by what they saw in Aberhafesp on May 16th.

Edward Parry



Gwyneth and Glyn Jones on their way to visit their old home at The Cefn.

THE GORALLT

There has been woodland on the area known as The Gorallt in Bwlch y Ffridd since before 1600. This means it is classed as an ancient woodland site. However, in the 1950's the Forestry Commission felled most of the trees and re-planted it with beech, oak, western hemlock and some Scots pine. This makes the woodland a Plantation on an Ancient Woodland Site (PAWS). You can tell it is a plantation site because the trees are planted in straight lines. We have owned The Gorallt for 5 years and in that time we have done various courses and had numerous consultants and foresters look at the wood to advise us on the best way to manage it in a sustainable but sympathetic way. These include people from Coed Cymru, The Continuous Cover Forestry Group, and the Woodland Trust. (There seems to be as many different ways of managing a wood as there are woodland management advisors!) However, our general aim is over the long term to restore it to a native Ancient Welsh woodland. In the shorter term we will be improving biodiversity by removing some non-native plantation species to allow more natural regeneration of native broadleaf species (e.g. *Quercus petraea*) and re-stocking with a more diverse range of species (e.g. Birch, Rowan, Hazel). We will be thinning out some of the beech to improve the growth rate of the remaining trees and to continue to diversify the woodland structure by moving away from single age stands.

The first stage of this process means we will be felling the non-native Western Hemlock. This was originally planted to act as a nurse crop for the oak to help them grow straight and tall. However, it has now out-grown its usefulness and is old enough to start producing seeds. It is a non-native (alien) species and could spread seed to neighbouring native woodlands. These areas will be replanted with a mix of Welsh Oak, Birch, Small leaved Lime, Cherry, Rowan and Hazel. The replacement oaks have been grown from acorns collected in the wood 2 years ago and grown in a nursery bed in our garden. We are also growing the other re-placements from seed at home. Thinning out the beech trees will allow the remaining trees to grow bigger and stronger. These trees will sequester more carbon and can then eventually be used for furniture and construction purposes, which means the carbon will be stored rather than lost.

You may have seen the yellow dots painted on the trees that are due to be felled. These have been marked by The Woodland Trust who are helping us to manage the felling licences (from NRW) and planning the forestry operations. This forestry work will be carried out by a local contractor in late summer (after the birds have finished nesting and the bluebells are dormant). While the work is being done there will be some heavy and dangerous machinery moving around the wood and extra traffic on the roads. During this time we will have to restrict access to the wood and we will be informing Powys Council. We would be grateful if you could keep children away from the work area and stacked timber. We apologise for any inconvenience or nuisance that may be caused.

Nature Notes from The Gorallt

We are extremely lucky to have nesting Pied Flycatchers (*Ficedula hypoleuca*) in the wood. These smart little black and white birds fly all the way from central Africa to breed in damp Welsh oak woodlands. They are on the Red list for protection and are classified Amber for conservation so are considered scarce. They normally arrive back in the wood early to mid April and nest in holes in trees or are quite happy to use nest boxes. We block the holes of some of our nest boxes until early April to prevent other birds such as Great Tits from using the available nest sites for the Flycatchers. Pied Flycatchers can often be seen flying back and forth from a perch on a branch to snatch flies out of the air. This distinctive behaviour makes them relatively easy to spot and identify. The female bird is less obvious as she is a duller brown colour. *Caroline & Phil Bevan. Ellesmere.*

HAMERBUILD

Nigel Hamer
General Builder
Home Maintenance
Bwlch-y-Ffridd



Supporting the Aberhafesp Community newsletter

Charrington's Deli

5 Hopkins Passage, Welshpool

Opening on 15th July 2023

We will be open Tuesday – Saturday

10am - 3pm for coffees, teas, light lunches and fine wine.

Our deli counter offers a great selection of cheeses, meats and delightful treats



Available to readers of the Aberhafesp Community newsletter.

ST GWYNOG'S CHURCH

We continue our services which are held on the first Sunday of the month at 9am (Holy Communion) and the third Sunday at 10am** (Morning Prayer) and we look forward to seeing you. We will be holding our joint service with Rhydfelin at 2.30pm on 30th July in Rhydfelin. ** note change of time to 10am. We also hold an 11am short service on the second and fourth Wednesdays of the month. Morning Prayer on the second Wednesday and Holy Communion on fourth Wednesday.

We would like to thank Carys & Ffion for the beautiful Easter garden which they made for us. The flowers are still blooming and giving us a lovely show of colour.

It was good to be all together on the 7th May to celebrate the King's Coronation and our thanks to the Community Centre for organising this. It was a memorable afternoon and a most enjoyable tea.

We continue to enjoy the monthly Fair Trade coffee mornings. We hope to continue these now on the 1st Saturday of each month until the end of the year. Thanks to all our helpers and cake providers who work so hard and continue to support us. We are sorry that we have so far been unable to access a new Fair Trade supplier after the closure of Traidcraft.

We are holding a strawberry tea on Sunday 13th August in the church in aid of the Montgomeryshire Family Crisis centre from 3-5pm. All are welcome. We hope the weather will be in our favour and will stay dry!

Thank you to everyone who helps and supports us at the events we organise. We do appreciate your support.

During our Morning Prayer service towards the end of May we had two welcome extra members of the congregation. Ian and Anne MacPherson had travelled from British Columbia, Canada and were spending a few days in the area trying to learn more about Ian's family history, namely the Woosnam family, and their ties to the Church and Aberhafesp Hall, with Canon Woosnam having served his final appointment as Rector at St. Gwynog's, retiring in 1923. After chatting over coffee and sharing photos and memories, Ian and Anne returned for our Wednesday morning service before heading home. We look forward to their future visits. The following week Brian Davies' family also visited St. Gwynog's having travelled from British Columbia to see some family graves. See our [Facebook page](#)

LOCAL YOUNG FARMERS

Aberhafesp YFC had the Montgomeryshire young farmers rally at the end of May where they entered some competitions. Gemma Owen, Eden Grigg, Ffion Smith, Ruby Grigg, India Lewis and Ella Whittacase competed in the dance competition where they were placed second. As a club we also competed in the generation game and the digger challenge. Lucy Jones and Ruby Grigg also competed in the under 21's cookery competition where they were placed 6th. The dancing girls are now busy practicing for their upcoming dance competition where they will compete in the nationals young farmers Street Dancing competition which will take place in Stafford at the YFC national public speaking competition on the 8th July.

ABERHAFESP Young Farmers Club after winning the county YFC rally in what is thought to be 1976 in Abermule.



UNIQUE WELSH STAYS



A collection of luxury properties for parties of all sizes

Book your next break at
www.UniqueWelshStays.co.uk

See our [Website](#)



VICKERS
Tree Surgery
& Arboricultural Services
01686 650514

Are you elderly, disabled (young or old) or just have mobility problems?

Then you need

DIAL-A-RIDE

Old Brew House, Ladywell Centre, Newtown, Powys, SY16 1AF: Charity No. 1005861

call or ring Steve Evans for up to date information on 01686 622566

fundraising for
hope house ty gobaith
children's hospices

SEASONS CAFE
FIELD
CAERSWS

Party on.
Ronnie Street

#Raise4Ron

Fun for all the family

Second Ave

Memorial Fundraiser

Saturday 22nd July
12pm onwards

Amazing Raffle prizes to be won

Activities:

- Donkey rides
- Photo opportunity with Wooden Door
- Messy Play
- Face Painting & hair braiding and glitter
- Bouncy Castle
- Soft Play
- Children's disco and Games
- Live Music going into the evening
- Food Trucks
- Drinks trailers
- Gift Stalls
- and much more!

Sponsored by

HUGHES ARCHITECTS

FASTENAL INDUSTRIAL & CONSTRUCTION SUPPLIES

WPHI WILLIAMS PLANT HIRE

METRO ROD DRAIN CARE AND REPAIR

EvaBuild Built Around You

hilltop honey

For more information:
Contact Alice on
07580075830

Good Quality Top Soil for Sale

Collected or delivered
Phone

Steve Pryce

01686 688425/07802846487

SP Waste Disposal

Domestic septic tank emptying
Drain unblocking

High pressure jetting/washer
200 gallon tanker hire

Septic tank installation and maintenance
All areas covered

Call for no obligation quote or advice
01686 688425/07802846487

WOMEN'S INSTITUTE

Aberhafesp WI continues to thrive with meetings being well attended. In April, our meeting was titled, Pictures in Harmony by Hilary and Ian Templeton, a very talented couple who put together short videos and set them to music with a varied repertoire which was informative, relaxing, and funny. Later, in April several of our members attended the federation group meeting at Abermule, where we were entertained by a very funny, ukulele playing lady called Gabrielle. Then in May we had an interesting visit from 2 volunteers from Blood Bikes Wales, Lorraine and Gerard, who shared information about the work this voluntary service provides throughout Wales, they were amazing, and we were all surprised with what they did. Last month Stan Mahon came along to demonstrate how he put together the hanging baskets he sells at his nursery, and he generously provided one for our monthly raffle.

At the beginning of June three members attended the Annual Council Meeting where we came away with the Tydfil Roberts Cup for third prize overall in the literary competition, so a huge thanks to all who contributed. We also won the Rose Davies bowl for the best WI programme, so a huge thanks to Heather for all her hard work in putting it together. We came third overall in the sports competitions, and a huge thanks to Joyce for sorting us all out, no mean feat! We hope to provide a varied programme for all and are happy to welcome new members to join our friendly group who meet on the first Thursday of the month in Aberhafesp Community Centre at 7pm, please do come along and meet us. *Stephanie Benbow, President, 01686629572*

July 6th	Fun Quiz (replacing Trip)	Prosecco +Strawberries & cream
August	HOLIDAY	
September 7 th	SkincareBOOtique	Martyn Hubbard
October 5th	Monty's Brewery	Russell Honeyman
November 2nd	Severn River Trust	Dewi Morris
December 7th	Christmas Wreaths	Jan Lawrence

MOTHER'S UNION

The Aberhafesp branch of the Mothers' Union is pleased to report that it is now holding all the events arranged in its 2023 diary: a welcome contrast to the disruption of the last three years.

On March 21st we met for a very belated Christmas meal at Themes restaurant in Coleg Powys. It was a delicious meal and was enjoyed by all. On April 20th we welcomed the project coordinator of the Newtown Food Surplus Organisation, Rachel Mathew as our speaker. She explained how the Food Surplus Organisation in Newtown had been set up and has expanded in recent times. It started by collecting surplus food from supermarkets in and around Newtown and distributing it free to anyone who needed it. It soon grew, with the help of many volunteers, into a hub where the food is collected and a twice weekly food share is made from the Jubilee Scout Hut in Newtown. At the 'Celebration of Newtown Awards' it received the Newtown Community Fund Recognition Award and also won the Climate Award category. We were pleased to welcome members of Aberhafesp Women's Institute and Newtown Mothers' Union to join us at St.Gwynog's Church. It was indeed nice to bring together a total of twenty people from our community.

The next meeting, held on May 18th, welcomed Marian Wilson as speaker. She gave a very interesting insight into MND (Motor Neurone Disease). She explained how variable the progress of the disease can be and the nature of the care needed to help sufferers. After having had experience of MND in her family she has worked with Montgomeryshire MND raising funds and increasing awareness of the condition for many years.

On June 15th the speaker was the Revd. Jeanette Wilkes. She gave a talk entitled 'Journey to Ordination' in which she described the various stages and happenings of her life. It was interesting, humorous and informative. During the last four and a half years she has been a member of the clergy in Cedewain Mission Area but she is about to relocate to Mold in North

Wales to continue her ministry. We all wished her well for the future and Christine Cooper presented her with a gift from Aberhafesp Mothers' Union. Our Summer trip is arranged for July 20th when we plan to go to the Mid Wales Arts Centre, Maesmawr near Caersws. On August 13th a Strawberry Tea is to be held at St.Gwynog's Church from 3pm to 5pm. The Autumn diary also includes a talk given by the Lingen Davies Cancer Fund in September and the Montgomery Family Crisis Centre in October. We continue to invite anyone who would like to join Aberhafesp Mothers' Union to please get in touch.

Barbara Moelwyn-Williams: Tel.01686627329

COMMUNITY COUNCIL

Aberhafesp Community Council covers the area of Aberhafesp, Bwlch-y-Fridd, Bethel and Rhyd-y-Felin.

We held the 2023 AGM in May, Alwyn Nutting and Graham Green held the post of Chair and vice chair for a second year, and we thank them for all the work for the previous year.

A Community Council is governed by the Local Government Act of 1972. Here in Aberhafesp it consists of seven Councillors who sign a Declaration of Office and work on a voluntary basis for the good of the whole community. They are supported by a clerk who is employed to ensure the correct procedures are enforced and the smooth running of the Council in general. Meetings are held on a **Wednesday evening in the Community centre**, and members of the public can attend any meeting, unless otherwise specified.

Notice of each meeting

is displayed for three clear days giving the date, the time, and the agenda.

They are posted on the notice boards at Bwlch-y-Fridd, Hillcrest Aberhafesp, the Community Centre and the telephone kiosk in Bethel.

Details of meetings can also be found on the Community Council [Facebook page](#) and the website aberhafesp.community-council.org.uk

You can access the latest *County Councillor monthly reports* as well as current *County planning applications*, where you can enter comments to support or object.

The decisions made at a meeting and also the attendees are posted on the website within a week of a meeting. The full minutes of meetings are only posted on the website after they have been approved by the Community Council which takes place at the start of the following meeting. For example minutes from a meeting in July would be approved in August, if a meeting was held then.

If you have an item you wish to add to the agenda please contact the clerk Rachel Hamer at the **new email address**

aberhafespcommunitycouncil@hotmail.com.

Come and just watch if you have an interest in anything on the agenda, or if you have anything you wish to bring to the attention of the council and you wish to speak at the meeting you need to ask the chairman.

COMMUNITY COUNCIL

Annual Report 2022 – 2023

There have been 7 Council meetings this year, during these meetings 4 planning applications were discussed. 15 minutes at the beginning of each meeting was now for residents to ask questions or to comment on anything on the agenda, so they did not need to stay for the full meeting if they did not want to, so far nobody had made any comments.

The Council have agreed to fund the Aberhafesp newsletter if needed.

A donation was made to the Community Association of £100 towards the costs of the Jubilee celebrations, as well as £250 to support the Community Centre.

The £30,000 from the sale of the quiting bed has now been invested into a property fund with a company called CCLA.

This year the Council took out a loan with Robert Owen Fund in Newtown to help with the purchase of a Speed Indicator Device (SID) for Aberhafesp village. The SID is moved between 3 locations within the village on a monthly basis.

Potholes continue to be concern within the area.

200 CLUB

This draw took place at the Coronation Tea on Sunday 7th May

£50	Mike Williams	Llanwnog
£25	Mr & Mrs Evans	Aberhafesp
£25	Oliver Jones	Aberhafesp
£25	Sarah Holloway	Aberhafesp
£25	Stephanie Benbow	Aberhafesp
£25	Mrs Winter	Aberhafesp
£15	Gareth Turner	Aberhafesp
£15	OakleyRichards	Aberhafesp
£15	Mr & Mrs Huggins	Aberhafesp
£15	Richard Jones	Aberhafesp

**Tickets for 2023-2024 will be on sale for £10 each in July.
Contact Glenys Pryce 01686 629711**

Vid2Usb

Professional Media Transfer Services

*Dont let those Video memories fade away.
Let us bring them to life on DVD or USB for you to re-live.*



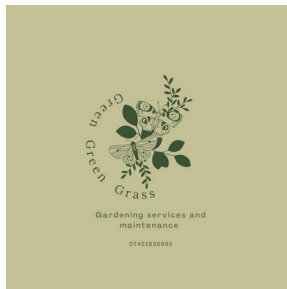
Speedy Service



Quality Assured

Call: 07713 024470

[See our Facebook Page](#)



GARDENING SERVICES AND MAINTENANCE

CONTACT: LEWIS JONES

Mobile: 07421836885

Email: greengreengrassgardener@gmail.com

Facebook: [Greengreengrass](#)

A.L.Benbow
The Office,
Waen Madoc,
Aberhafesp,
Newtown
SY16 3LR

albenbow@hotmail.co.uk

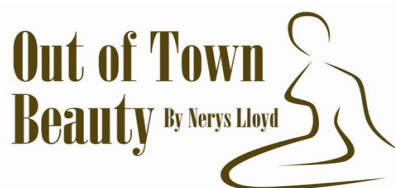
07929 313167



A L Benbow is a general builder with over 40 years' experience. All building work undertaken, to include but not limited to:

- New builds
- Renovations
- Barn conversions
- Garage conversions
- Extensions

A salon/spa with tranquil surroundings Ideal for a relaxing or well needed massage



**TO MAKE AN APPOINTMENT
Tel: 01686 610273 or 07813 151871**

Online bookings.

Email: info@outoftownbeauty.co.uk **Website:** www.outoftownbeauty.co.uk

Just 1.5 miles up the Bryn Lane (past the hospital), Newtown.

All treatments carried out by friendly therapists, time given to YOU, no matter what treatment

Dermalogica Facial Massage

Spray tanning Waxing

Ladies evenings And more.....

Pedicures

Manicures

Lash extensions

Spa packages

Group bookings (can include buffet and glass of wine)

Vouchers also available (perfect present)



Philip Curnow Photography



**Specialists in Commercial, Advertising, PR, Promotional, Sports
and Event Photography. Full Nationwide Coverage.**

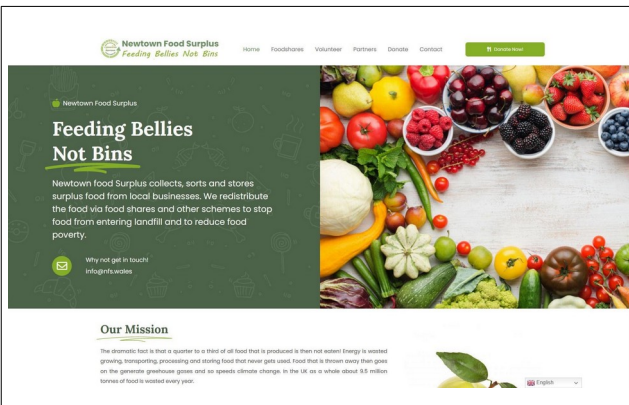
Bryn y Groes, Aberhafesp, Newtown, SY16 3JQ

01686 688235

07734312180

www.philipcurnow.co.uk

[Www.philipcurnow.co.uk](http://www.philipcurnow.co.uk)



About Newtown Food Surplus

We're open (usually) Mondays and Fridays
10.30am to 11.30am AT

THE JUBILEE SCOUT HALL, PARK LANE, NEWTOWN, SY16 1EN.

We do occasionally hold shares in the Ladywell Hall at Ysgol Calon y Dderwen, Park Lane, Newtown.

Many of us are environmentalists who want to see Newtown as a pioneering town of food sustainability filling #BelliesNotBins.

It is for Everyone!!!

Please be aware that we are working with community groups as well, you are not taking food away from anyone.

We are **NOT a food bank**. We are about 'food-sharing', bringing community together, using the food for positive change in the community.

You 'pay as you feel', so if you're having a tough month it's free or you could donate your time and help. If you can afford to pay donations are very much welcome towards our running costs, help buy equipment etc and can 'pay it forward for others'.

OUR STORY

We started at the end of October 2021 with our first food share operating from a cabin on the Cultivate Community site at Pen Dinas, near the Hafren Theatre and college in Newtown. This quickly grew to two food shares a week whilst also supporting local community groups like Newtown Community Cafe. We now have a team of 60+ enthusiastic committed volunteers we collect 7 days a week from several supermarkets.

See our website: [NESWALES](#)
and our [Facebook Page](#)
for up to date details

WE NEED MORE VOLUNTEERS

With the aim of helping as many people as possible and making a difference to the environment, we are always looking for enthusiastic volunteers, especially drivers to collect from the supermarkets.

Contact: newtownfoodsurlus@gmail.com

COMMUNITY CENTRE HALL HIRE

If you are arranging a family event, children's party, funeral tea, or a meeting, our community centre building, marquee and a gazebo are all available for hire. Local residents are also able to hire tables and chairs for private off site functions. There is a fully functioning kitchen and a newly installed sound system which includes a hearing loop.

Contact for the hall: Graham Green 01686 651225 graham.green2@btinternet.com

We also have an 8x4mtr marquee and a 6x3mtr gazebo for hire:

Contact: Nigel Hamer 01686 650702 nigelhamer68@hotmail.com

ABERHAFESP COMMUNITY CONTACTS

Newsletter Compiler	Marilyn Bedworth mbedworth@gmail.com	07734329941
Community Centre: Chair	tba	
Community Centre: Treasurer	tba	
Community Centre: Secretary	tba	
Community Centre:		
Hall Bookings	Graham Green graham.green2@btinternet.com	01686 651225
Marquee/gazebo Hire	Nigel Hamer nigelhamer68@hotmail.com	01686 650702
Community Council Chair	Alwyn Nutting glascoed1@gmail.com	01686 650862
Young Farmers Secretary	Ruby Grigg rbygrigg2005@icloud.com	
YoungFarmers Chair	Ben Evans	07455048551
W.I. President	Stephanie Benbow Stephaniebenbow@btinternet.com	01686 629572
Mother's Union	Barbara Moelwyn-Williams b.moelwynwilliams@btinternet.com	01686 6273290
Community Council website	aberhafesp.community-council.org.uk	

This newsletter can be accessed from both the Council website and our [Facebook](#) page

GENERAL DATA PROTECTION REGULATION (GDPR)

Residents and friends of Aberhafesp, Bwlch-y-ffridd, Bethel, Rhyd-y-Felin and have submitted their email addresses to the compiler of this newsletter giving permission for the distribution of quarterly issues of the newsletter plus occasional emails giving additional local news or information. Consent for the use of personal details to be held for this purpose can be withdrawn at any time.

NEXT ISSUE

The next issue of this newsletter will be published in **October 2023**. Please send any articles of interest to the compiler (mbedworth@gmail.com) no later than the **20th September**.

Also: If you usually receive this newsletter as a printed copy through your letterbox and you have an email address please let the compiler know so that we can save on the cost of printing.

ADVERTISEMENTS



Annual cost of 4 quarterly issues

Quarter page black & white	= £25
Quarter page colour	=£35
Half page black & white	=£35
Half page colour	=£45
Full page black & white	=£65
Full page colour	=£85