

Rollama

Design Competition Entry Guide

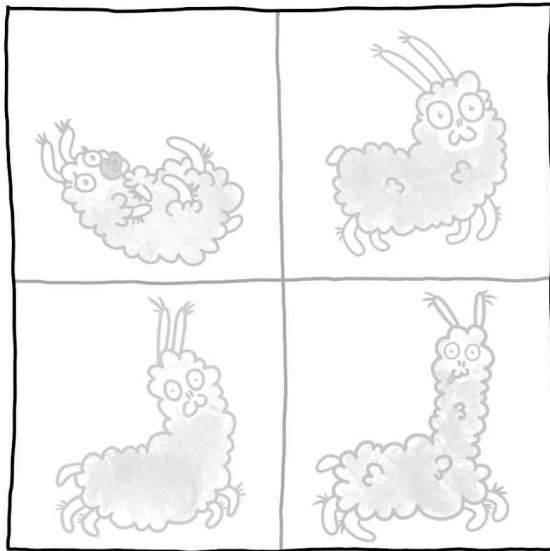
Do you want to design a new item
for the Rollama Avatar Shop?

Name: _____ Class: _____

School: _____

Rollama

Design Competition



Deadline: 30th June

Enter through your teacher or
email contact@rollama.com.

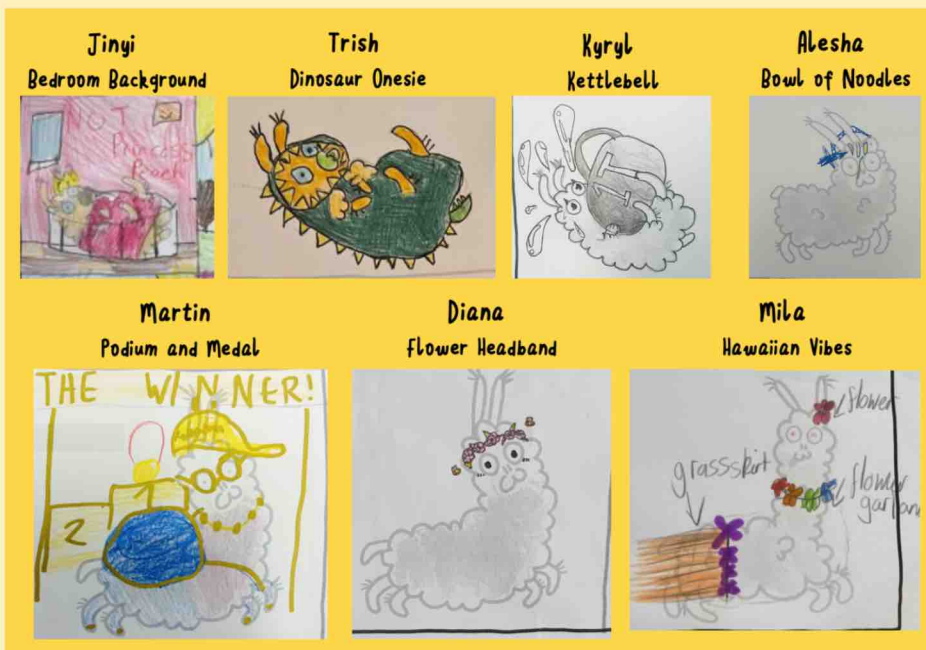
You can enter as
many designs as
you like but only
one of your designs
can win.

You can fill the sheet with designs, or
only submit one, so don't worry if you
run out of ideas!

Röllama

Design Competition Entry Guide

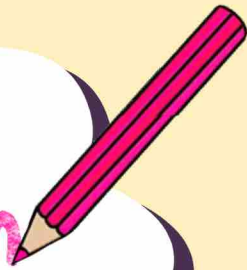
The winners will be the most interesting ideas, not just neatest drawings.



Take a look at last year's winning submissions.

Röllama

Design Competition Entry Guide



Which part of the shop
does your design fit
into?



Hats, headbands, ear clips,
masks, and glasses



Face paint and facial
expressions



Belts, necklaces, bags,
riding toys or animals



Socks and shoes



Backgrounds