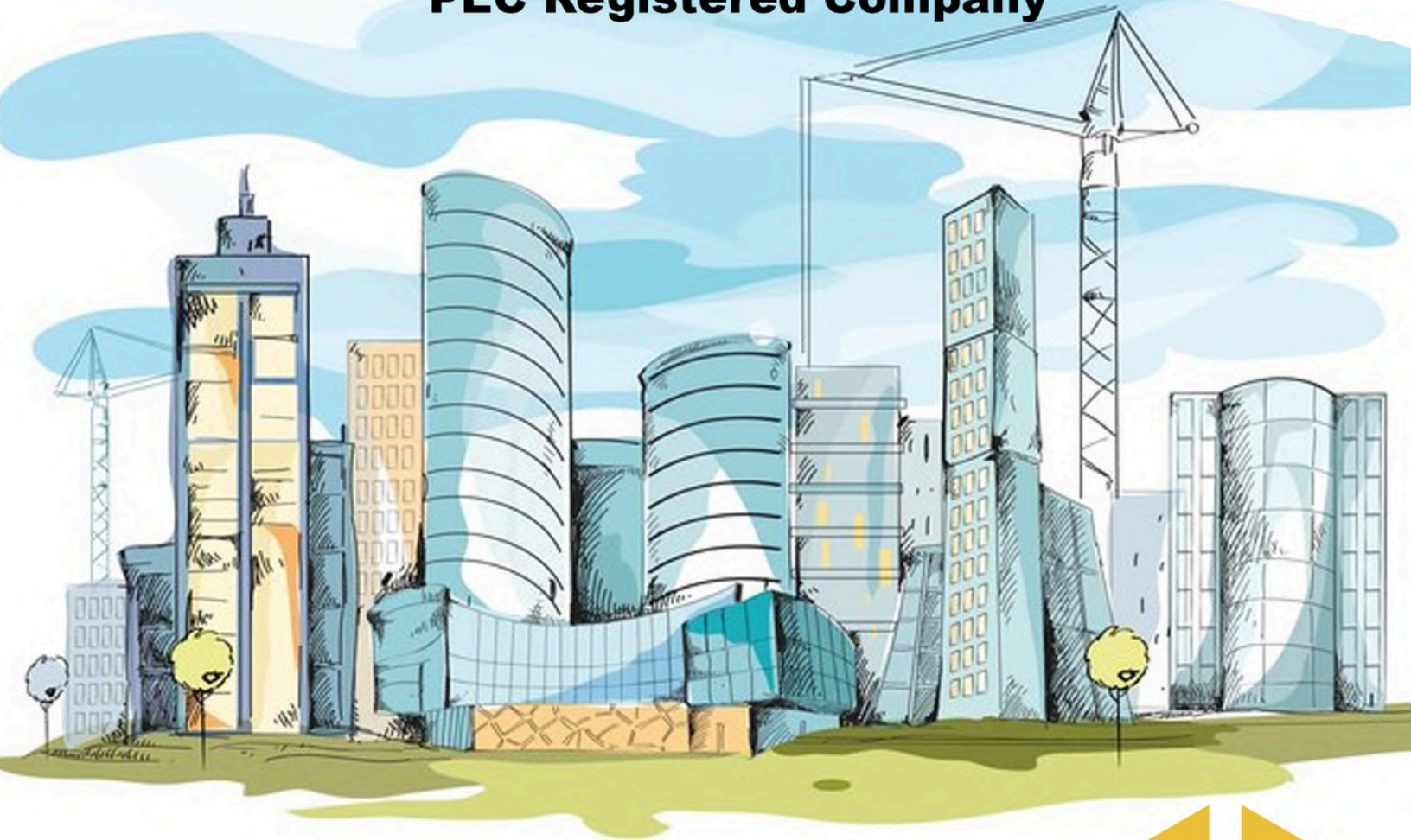




SES ENGINEERING

PEC Registered Company



**CORPORATE
GROUP PROFILE**



Our Web Site
www.sesengineerings.com

Group Profile

TABLE OF Content

SES Group

CEO Message	02
Who we are	03
Vision, Goal, Philosophy	04
SES Core Value	05
Aims & Objectives	05
SES Team Mates	06

SES Solution Experties

MEP Projects & Services	13
General Order Supplies	33
Projects PO's & Appreciation Letters	35
Our Business Partners	40

SES Services

Architectural, Interior & Construction	07
Our Process	08
Office Space Planning & Projects	11
Commercial Space Planning Projects	17
Residential Concepts & Projects	23
Construction & Renovation Services	25
Monthly Contractual Services	29



CEO message



Dear Partners and Clients,

SES Engineering, part of the Smart Solution Group, brings over 10 years of experience in delivering comprehensive, turn-key solutions that meet all business requirements. Our skilled team manages each project from initial design through to completion, ensuring top-quality standards and smooth execution.

We are committed to upholding integrity and fiscal responsibility in every aspect of our work. As your dedicated partner, SES Engineering aims to help you overcome business challenges and deliver lasting value through reliable, proven solutions.

TABISH REYAZ

Group Owner
SMART SOLUTION GROUP

Dear Clients,

With over a decade of experience, SES Engineering, offers a wide range of engineering services, including MEP, design and build, and turn-key solutions. Our skilled team manages each project from concept to completion, ensuring high-quality standards and smooth execution. We take pride in delivering reliable and cost-effective solutions that meet all business needs. Our focus on integrity, transparency, and fiscal responsibility ensures trustworthy partnerships. We understand the complexities of modern projects and work closely with clients to overcome challenges.

At SES Engineering, we aim to be your dependable partner in achieving long-term success. We look forward to building lasting relationships and delivering excellence on every project.

SAMRAN KHALID

CEO
SES ENGINEERING SERVICES

Dear Customers,

With over a decade of experience, SES Engineering delivers MEP, designandbuild, and turnkey solutions under the COO's strategic leadership. We drive rigorous operational execution from concept to completion, ensuring the highest quality and seamless delivery. Our procurement excellence strategic supplier selection, vendor management, and cost visibility delivers dependable performance and predictable outcomes.

BILAL TUFAIL

COO
SES ENGINEERING SERVICES

Group Profile

WHO we are?

“

Unlock the potential of your spaces with SES Engineering Services. Our team of seasoned professionals brings extensive expertise in corporate, commercial, and residential sectors. We specialize in design, engineering, construction, furnishing, and seamless integration of IT, office, security equipment, and industrial solutions. Elevate your environment with our tailored services and innovative products.

”



SES Engineering Services distinguishes itself through its meticulous design approach, offering a diverse array of services and products specifically tailored to meet clients' unique needs. At the outset of each project, a dedicated project manager is assigned to engage in comprehensive consultations with the client, ensuring a deep understanding of their objectives and the project's scope.

This collaborative process facilitates effective planning and space evaluation, enabling the project manager to assist the client in formulating a realistic budget that aligns with the project's requirements, phases, and anticipated completion date.

Our business plan is straightforward: to alleviate client frustration by efficiently locating and managing a diverse array of trades, thereby establishing ourselves as the singular source for all necessary services. Through this streamlined approach, we aim to enhance client satisfaction and foster long-term relationships built on reliability and comprehensive support.

By the grace of Almighty Allah, we are currently engaged in servicing prominent partners across various sectors, including telecommunications, non-governmental organizations, private industry, public sector, and financial institutions.

At SES, we understand that the demands of our clients may extend beyond conventional business hours. Consequently, we offer flexible scheduling for work and installations to accommodate their unique timelines. To further enhance our service, we strategically import a variety of essential items, including furniture, electronics, security equipment, and specialized IT and office supplies, ensuring that we maintain a readily available stock tailored to meet our clients' needs.

CUSTOMER SATISFACTION



Group Profile

SES vision

We envision a world where technology operates flawlessly, meeting all business needs through a single, seamlessly integrated provider. Our commitment extends to ensuring that customers experience transparent and accurate billing for all services rendered



We are committed to enhancing value at every phase — from design to construction and project management. Driven by a culture of quality and innovation, we aim to deliver long-term benefits to our clients and partners. Our mission is to foster enduring relationships that withstand the test of time.



Group Profile

SES Core Values



1

Goal

To empower our clients by creating beautiful, functional spaces that reflect their unique lifestyles while championing sustainable practices for a better future



2

Innovative

Our innovative approach integrates the latest design trends with cutting-edge technologies to transform spaces into smart, efficient, and aesthetically pleasing environments.



3

Teamwork

Our collaborative approach ensures that every project benefits from diverse perspectives and expertise, resulting in stunning designs that truly reflect our clients' needs.



4

Honesty

We believe in transparent communication and building trust with our clients, ensuring they are informed and confident throughout every stage of their project.



5

Quality

Our meticulous attention to detail and commitment to using premium materials ensure that our designs stand the test of time while exceeding client expectations.



6

Customers

Our customers are at the forefront of everything we do. We listen to their needs and collaborate closely to create personalized spaces



At SES Engineering, we prioritize innovation by utilizing new technologies and creative solutions. Quality is at the forefront, ensuring durability and client satisfaction through top materials and craftsmanship. We value honesty and transparency to build trust with our clients. Teamwork among designers, contractors, and clients ensures cohesive and effective projects. Our strong customer focus drives tailored, impactful design solutions.

Group Profile

SES Team



At SES Engineering, our management philosophy is grounded in responsibility and mutual respect, creating a positive and collaborative environment for our team. We actively promote a culture that encourages the 4Cs—Communication, Collaboration, Creativity, and Commitment—driving success and innovation in every project we undertake.

Critical Thinking

Critical Thinking refers to the ability to analyze information objectively and make reasoned judgments. It involves evaluating evidence, identifying biases, and assessing the validity of arguments to arrive at well-informed conclusions. By fostering critical thinking, organizations can enhance problem-solving capabilities and drive informed decision-making.

Collaboration

Collaboration is the process of working together toward a common goal, leveraging the diverse skills and perspectives of each team member. It fosters a sense of community and enhances innovation by encouraging open communication and the sharing of ideas.

Communication

Communication is the process of sharing information and ideas between individuals or groups, essential for building trust and understanding. Effective communication fosters collaboration and ensures everyone is aligned, enhancing team dynamics and organizational success.

Creativity

Creativity is the ability to generate new ideas, solutions, or approaches by thinking outside conventional boundaries. It drives innovation and enables organizations to adapt to changing environments, fostering a culture where unique perspectives are valued and explored.

OUR TEAM

SES Engineering is available 24/7 with a friendly, expert team ready to deliver personalized design and renovation solutions. We pride ourselves on quick responses, creativity, and quality, turning your vision into reality. You're part of the journey with us—rely on trusted support every step of the way.



Group
Profile

OUR Services



Smart Design and Renovation, we prioritize long-term benefits for our clients. As a turnkey, single-source provider, we cater to all your business needs whether you require solutions for a small corporate project or a major build-out. We offer a range of additional services, supplying everything your company needs to operate effectively, along with comprehensive after-sale support.

Architectural, Interior & Construction Services



	Page
✓ Our Process	08
✓ Office Design	09
✓ Commercial Design	13
✓ Residential Design	17
✓ Construction & Renovation	18
✓ 3 D Project Modeling	19
✓ Project Management	20

Let's work
with us





Theme Design Excellence

We're passionate about bringing your vision to life through unique and engaging themes for Office, Commercial Spaces, Houses and children's spaces. As the trend for themed establishments grows around the globe including here in Pakistan. We're excited to be part of a movement that's transforming how people experience dining and services.

While some international themes might be a little out there, many in Pakistan are looking for designs that are fresh and invigorating, offering a break from the everyday. That's where we come in! We specialize in creating award-winning theme restaurants that not only attract customers but also keep them coming back for more.

Let's work together to enhance your space with creativity and innovation, making it a memorable experience for everyone who walks through your doors. We're here to make your dreams a reality!

One Stop Solution

We bring together a range of interior design services and showcase them in the most captivating way. We specialize in luxury architectural and interior design, delivering exceptional and ultra-luxurious projects across various sectors, including:

- ✓ Office Interiors
- ✓ Space Planning
- ✓ Residential and Commercial Architectural Design
- ✓ Home Interiors & Exterior
- ✓ Restaurant Interiors
- ✓ Showroom Interiors
- ✓ Play Schools, Institutes, and Colleges



Office Design

“WE DEVELOP SAFER, MORE HUMAN-ORIENTED OFFICE SETTINGS”

At SES Engineering we share a deep commitment to preserving our planet's natural resources. Our designs aim to harmonize human needs, economic viability, and environmental stewardship. We believe that thoughtful design solutions enhance well-being, create significant value in the workplace, and attract top talent while keeping your current team healthy and engaged.

Our dedicated Smart Design team offers innovative interior design solutions for businesses of all sizes, from small startups to large enterprises. We specialize in conceptual interior design, renovations, and comprehensive project management for office spaces. Our goal is to deliver high-quality interior designs that provide functional solutions tailored to your needs.

We approach every project with sincerity, ensuring that we provide the best assistance possible and deliver professional advice on office interior design. Collaboration is key, and we prioritize working alongside you as a vital part of your team.

As your office interior design consultants, we are committed to offering you the most informed advice and exceptional service. Client satisfaction is at the heart of our philosophy, and we're dedicated to making your workspace a place that inspires and



SPACE TRANSFORMATION:

At Smart Engineering Services, we specialize in transforming your workspace with our unique touch. Our approach combines innovative conceptual designs, thoughtful layout planning, and versatile furniture solutions to create an environment that inspires productivity.

INTERIOR EXPERTISE:

We work closely with our clients to identify their specific needs, offering comprehensive solutions that include space planning, design, project management, and regulatory compliance.

SERVICE & QUALITY:

As a manufacturer of office interior design furniture, we pride ourselves on delivering exceptional after-sales service and cultivating strong, lasting relationships with our clients.

DESIGN INTELLIGENCE:

Beyond aesthetic appeal, we prioritize functionality and practicality as essential elements in our design process. Our designs are crafted to enhance the usability of your space while maintaining a stylish look.

ALWAYS ON TIME:

At SES Engineering we embody efficiency with traits like systematic planning, willingness to adapt, intelligence in problem-solving, and timely execution.

CUSTOMER RELATIONSHIP:

We believe that strong relationships are vital. If you ever need assistance or advice, remember that we are just a call away. Your needs are important to us, and we're always here to help.



WHAT WE DO



SMART DESIGN CONSULTANT

1. Innovative Space Planning
2. Modern Office Interior Design
3. Auto Cad Drawings
4. 3D Project Modeling
5. 3D Video Animation
6. Mode Boards



INTERIOR FURNISHING:

1. Glass Partition
2. Ceiling Design Concepts
3. Sound Proof Partition
4. Wall Cladding
5. Gypsum Walls and Ceiling
6. Cement Board partition
7. Fabric Panels
8. Acoustic panels



MECHANICAL & ELECTRICAL WORKS:

1. Electrical Works
2. Fire Sprinkler Works
3. Air Conditioning
4. VRV System
5. Plumbing Solution
6. Mechanical work
7. MS and SS Iron work



PROJECT MANAGEMENT:

1. Cost Budgeting
2. Effective Site Coordination
3. Design & Build Management
4. BOQ Services
5. Project Timeline Report
6. MR and QC Report
7. Supply Chain Planning



FURNITURE SOLUTIONS:

1. Office Furniture
2. Custom Made Furniture
3. Chairs & Sofa
4. Tea Counters
5. Sitting Area Furniture
6. Meeting Rooms Furniture
7. Cafe Furniture



SOFT FINISHING:

1. Carpet
2. Laminate Flooring
3. Vinyl Flooring
4. Wallpaper Works
5. Window Blinds & Curtains
6. Sound Proof Walls
7. Wall Cladding
8. Fabric Pannels



SUBMISSION WORKS:

1. Structural Submission
2. M&E Submission
3. CCTV Layout
4. Networking Layout
5. Floor Sitting Plan
6. As Build Submission
7. Light Plan Submission
8. Fire Fighting Layout



MANUFACTURER:

We are a leading manufacturer and supplier of smart system furniture designed for both residential and office interior use. Our furniture is thoughtfully crafted and imported from our neighboring countries to align perfectly with modern interior design requirements. Each piece showcases unique styles and customizable sizes to cater to our clients' specific office design needs.

We prioritize using materials and colors that enhance your company's image and branding, ensuring a cohesive look throughout your workspace. Whether you need a standard workstation or a bespoke cabinet tailored to your vision, we can bring your ideas to life.



SMART
ENGINEERING
SERVICES

CORPORATE OFFICE PROJECTS



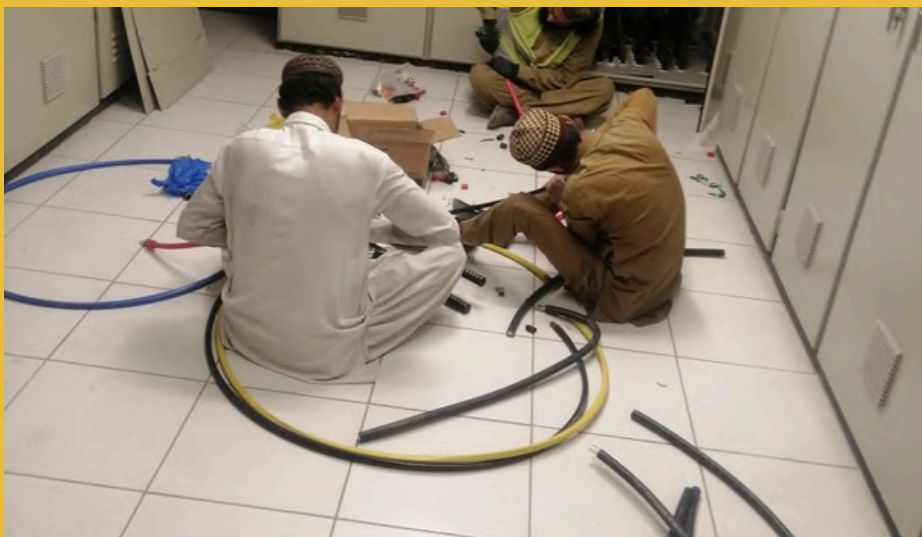
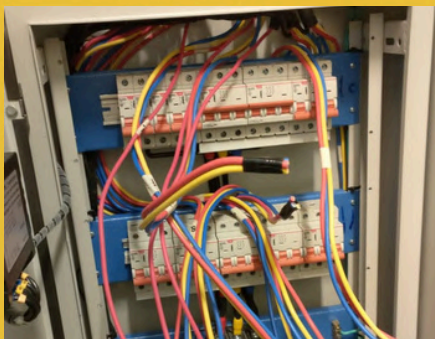


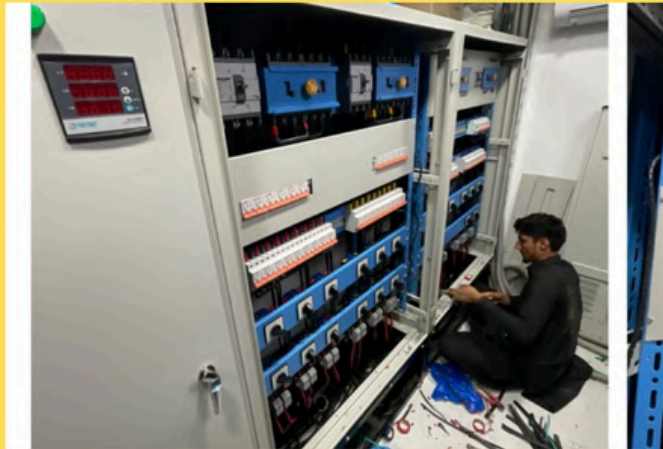


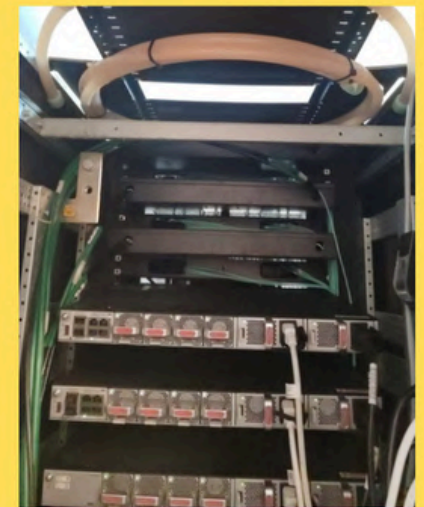
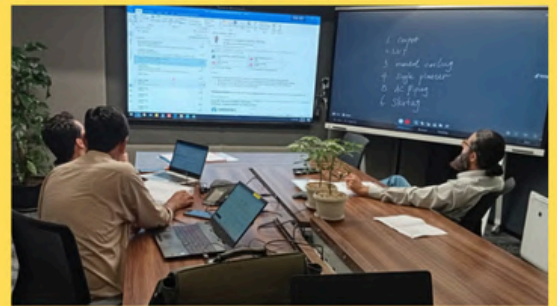


MEP WORK

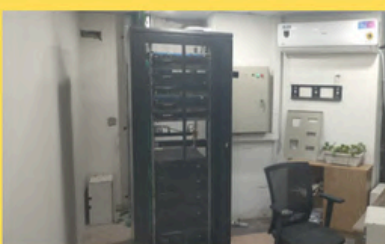
**SMART
ENGINEERING
SERVICES**







IT Projects



Commercial Design



We provide a diverse array of architectural services, ranging from small renovations to large-scale developments across sectors such as education, healthcare, and the arts. Our process centers on understanding and prioritizing our clients' visions, translating those aspirations into practical and innovative design solutions. Each project is crafted to enhance functionality and integrate seamlessly into its environment, celebrating the unique character of each space.

COMMERCIAL & ARCHITECTURAL SERVICES



All about creating spaces that connect people and serve genuine community needs, not just looking good. By harmonizing buildings with their surrounding open areas, we make sure these environments are not only functional and durable but also welcoming places where people can gather, share experiences, and engage in meaningful activities.

SOCIALLY RESPONSIBLE DESIGN



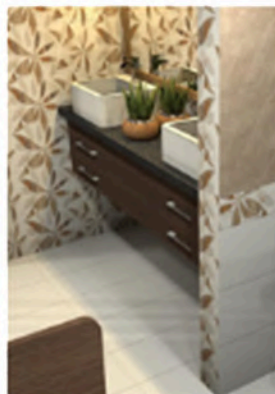
Master planning is all about seeing each building as part of a bigger picture, where every structure serves its own purpose while also enhancing the overall community. We focus on creating spaces that not only function well individually but also contribute to a harmonious environment together. Moreover, our designs consider future growth, ensuring that each addition enriches the whole, making it an even better place to live, work, and play.

MASTER PLANNING



Feasibility studies are designed to help us understand how best to meet our clients' unique needs and aspirations. By thoroughly analyzing factors like site potential, available technology, sustainability options, and budget, we identify opportunities and constraints to create the most effective and meaningful solutions

FEASIBILITY STUDIES





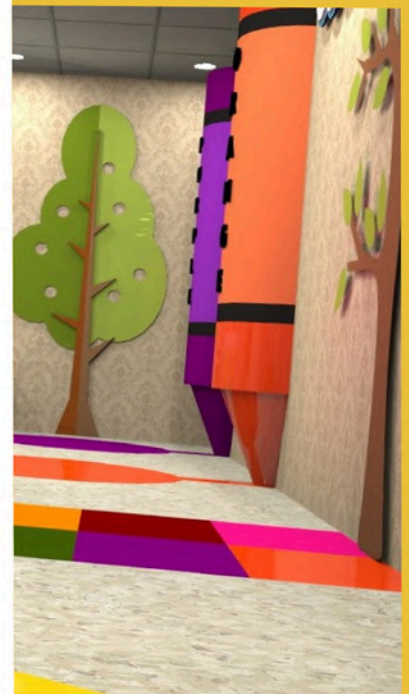
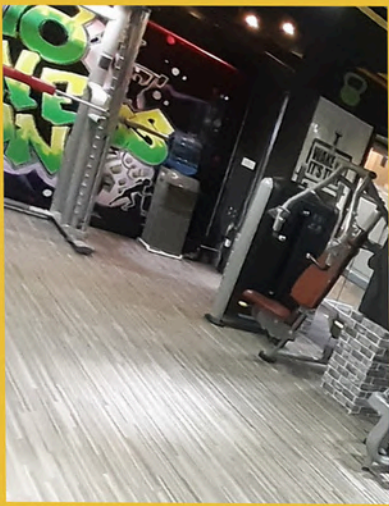
Our Commercial Projects

BUILDING INFORMATION MODELING

Building Information Modeling (BIM) is an innovative 3D technology designed to engage a diverse range of users, including architects, contractors, consultants, and clients. Beyond creating three-dimensional representations of building designs, BIM features a comprehensive database that facilitates coordination of all building elements on a single platform. This system streamlines the management of construction systems, enabling effective tracking of operations and cost control while simplifying information exchange among clients, consultants, and regulatory authorities. With project coordination in three dimensions, stakeholders can monitor progress and identify potential issues early, minimizing the risk of cost overruns during construction. Our office effectively utilizes this system tailored to each project we undertake.







Residential Design



"YOUR HOME IS THE HEART OF YOUR LIFE. IT'S WHERE YOU MAKE MEMORIES, RAISE YOUR KIDS, LOVE YOUR PETS, AND GROW YOUR PLANTS. THIS WARM REFUGE WELCOMES YOU AT THE END OF THE DAY, GIVING YOU COMFORT AND SAFETY. IT'S A SPACE FILLED WITH SPECIAL MOMENTS AND THE DREAMS YOU HAVE FOR THE FUTURE."

Concept Building

We want to understand you and your family better by meeting at your home to discuss the big ideas that will shape your house design. While we'll gather details on the number of bedrooms and bathrooms, we also want to know how you envision your home feeling. It's important to assess the site conditions for the new build or addition, so we'll document existing features and dimensions. If you have any drawings or surveys, please share them, as they will assist us in the process. Expect to spend a few hours gathering this information together.

Design Development

The final output of this phase is the Design Development Set, which serves as a critical milestone in the overall process, akin to the Schematic Design Set. This set provides you with one last chance to make minor adjustments before finalizing the design. While significant changes can still be accommodated, they may extend the timeline for completion.





RESIDENTIAL PROJECTS

Conceptual Design

The primary objective of this phase is to produce a Schematic Design Set—a collection of drawings that outlines the design in greater detail. This set will include dimensioned and labeled plans, elevations, and sections that a contractor can use to generate an initial construction cost estimate. Think of the Schematic Design Set as a snapshot of our progress; while there will still be opportunities for adjustments, the overall direction of the design will be largely established at this stage.

Construction Documents

After receiving approval for the Design Development Set and integrating any feedback, we can finalize the Construction Document Set. This comprehensive collection of drawings serves as the essential guide for the contractor to construct your home. Alongside these drawings, we include a detailed set of specifications, which provide written descriptions of the required materials and craftsmanship.

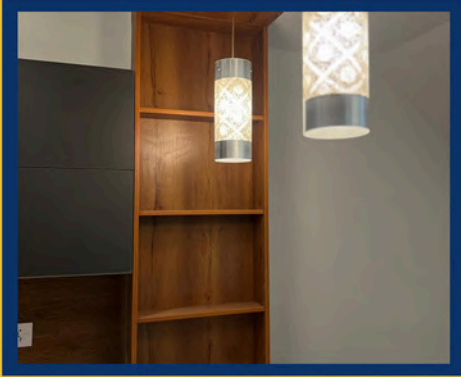
Construction Observation

Once construction begins, the contractor may have questions regarding the design intent, making it beneficial to have a knowledgeable representative on-site. Occasionally, contractors might propose changes to the design to reduce costs or simplify the construction process. While some of these suggestions can enhance the project, they may also lead to unforeseen issues. Having someone who is familiar with the design advocate for your interests is where our Construction Observation services prove invaluable.



RESIDENTIAL PROJECTS







Group Profile

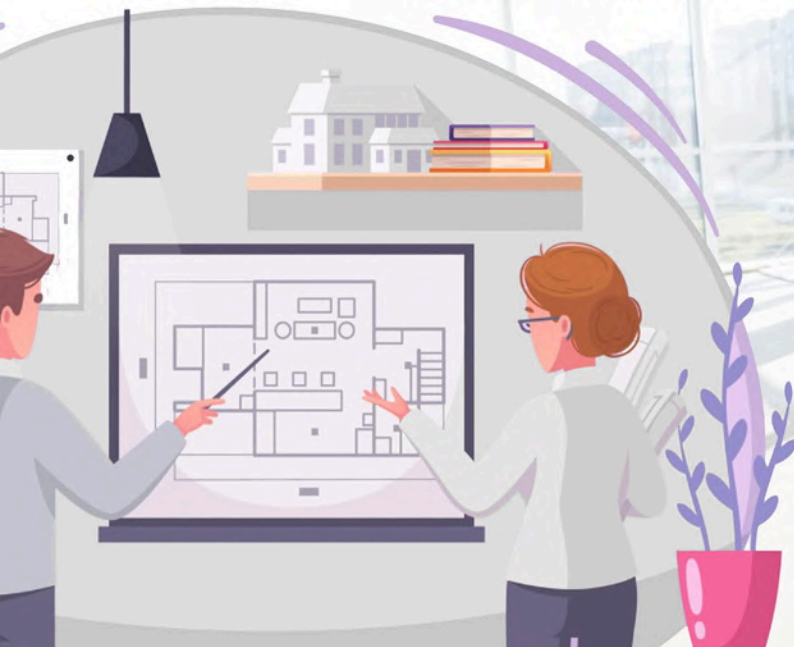
Construction & Renovation



Construction and Renovation:
The discipline of organizing labor
and guiding resources, harnessing
nature's power for the benefit
of humankind

SES Engineering proudly highlights a team of engineers, project managers, and specialists who have been integral to planning and delivering a diverse range of projects. SES Engineering firms have designed, upgraded, and renovated spaces—from compact offices of a few hundred square feet to larger corporate environments exceeding 20,000 square feet and complete “from the ground up” builds. We take pride in helping clients achieve their goal of transforming raw space into a dynamic, functional environment that reflects the desired image and organizational culture. As the single source for engineering and related services, SES Engineering can manage the full spectrum of a Construction Plans

- ▶ Your timetable is our timetable.
- ▶ Your priorities are our priorities.
- ▶ Your opportunities are our opportunities.



Technical & Monthly Contract Services

SES Engineering is proud to field a highly qualified, efficient, and motivated team of engineers and skilled technicians operating in a fully computerized environment. We assume total responsibility for building services and maintenance through integrated management and engineering support. All services are delivered by qualified engineers and tradespeople, and SES Engineering upholds two core principles: customer satisfaction and professional, high-quality work.

Monthly Repair & Maintenance
Services

Monthly MEP
Services

Monthly DG
Maintenance
Services

Facility
Management Services

House Keeping Services

Handyman
Services

- ▶ Air Handling Units, VRF & AC Maintenance Contracting....23
- ▶ Electrical Fittings & Fixtures Services Contracting....24
- ▶ Generator Maintenance Contracting....25
- ▶ Painting & Polishing Contracting....26
- ▶ Partitions & False Ceilings Contracting....27
- ▶ Carpentry & Flooring Contracting....28
- ▶ Electrical and MEP Projects...29

AIR-CONDITIONING, VENTILATION & AIR FILTRATION SYSTEMS

Monthly Contracting

Services Division - SES Engineering

SES Engineering (SES Eng) delivers a comprehensive range of service offerings designed to ensure asset reliability, regulatory compliance, and operational excellence across residential, corporate, industrial, and commercial environments. Our service portfolio blends ad-hoc support, planned maintenance, and compliance inspection with installation, commissioning, and integrity management for our projects and product divisions.

Breakdown, Repair, and Planned Maintenance (Pakistan-wide)

Rapid-response services engineers and technicians deployed nationwide to address equipment breakdowns and system failures, often on short notice. Scheduled preventive maintenance for specialist HVACR equipment beyond client in-house capabilities.

A proactive approach to reduce the total cost of ownership by preventing failures in warm climates where outages have significant impact.

Preventative Maintenance Agreements

Customized PM plans keep HVACR assets in peak condition, reducing unexpected calls. Available for 1, 2, or 3-year terms to fit asset lifecycle and budgets.

Includes routine inspections, performance checks, and prioritized maintenance windows. Optional remote diagnostics and real-time monitoring add-ons. Comprehensive reporting and proactive recommendations for continuous improvement. Site assessment, tailored plan, and periodic reviews to adapt to change.



Installation & Commissioning

SES Engineering's installation team comprises qualified engineers and technicians. We install all HVACR components and subsystems, including ductwork, dampers, fans, and air conditioning equipment.

Refrigeration plants, electrical systems, and instrumentation are within our scope. We specialize in Residential, Corporate,

Duct Cleaning

Regular duct inspection and cleaning is a SES Eng health-and-safety priority, mitigating spores and microorganisms and reducing respiratory risks. We address duct buildup and debris that can compromise system performance, airflow, and energy efficiency.

Spare Parts

SES Engineering maintains robust partnerships with major manufacturers to source a wide range of engineering equipment and spares efficiently and cost-effectively. Spares Unlimited supports repairs and maintenance with prompt, reliable parts supply to minimize downtime.





ELECTRICAL FITTINGS & FIXTURES SERVICES **Monthly Contracting**



BUILDING Electrical **REMODELING**

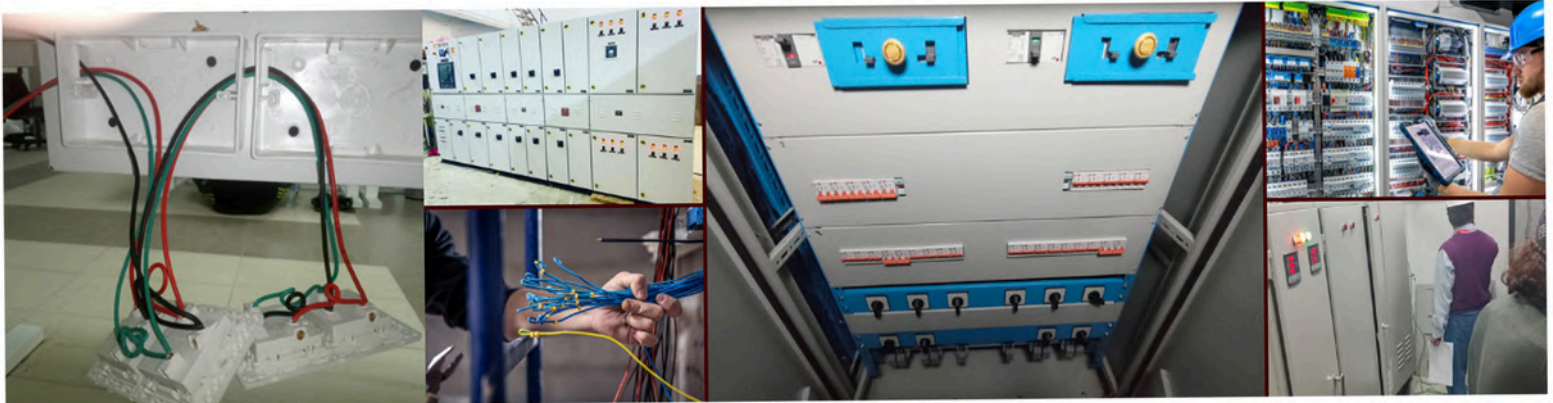
We know regulations matter for your business. That's why we offer practical, compliant electrical solutions you can trust. From the first install to ongoing maintenance and any repairs, we've got you covered with an end-to-end service. Our team is made up of qualified, safety-focused electricians who take pride in doing high-quality work. Whether you're adding power and lighting points, rewiring, or starting a new installation, we handle it all with care and clarity. We serve homes, residential complexes, commercial buildings, industrial facilities, and corporate campuses across Pakistan.

- ▶ Electrical work
- ▶ Cabling management
- ▶ Cable arrangement under workstation
- ▶ All electrical faults maintenance,
- ▶ Repairing and new wiring installations
- ▶ Ceiling fan repairing
- ▶ Tube light fixing ceiling
- ▶ New sockets installing
- ▶ Switches & sockets changing
- ▶ New electric wiring
- ▶ Db installation and fixing
- ▶ LCD fixing or LCD hanging on a wall
- ▶ Lights fixing or installing

- ▶ Globes fixing or installing
- ▶ Any electrical short circuit
- ▶ Generator installation and repair services
- ▶ Motor installation and repairing
- ▶ Electrical fittings & fixtures services
- ▶ Home appliance repair
- ▶ Audio-video system
- ▶ Home appliances

Emergency Repairs:

We offer an emergency electrician service that allows our customers to have peace of mind, as we can get to you within one hour.



PREVENTATIVE MAINTENANCE



DG Maintenance Monthly Contracting

Generator Maintenance Division:

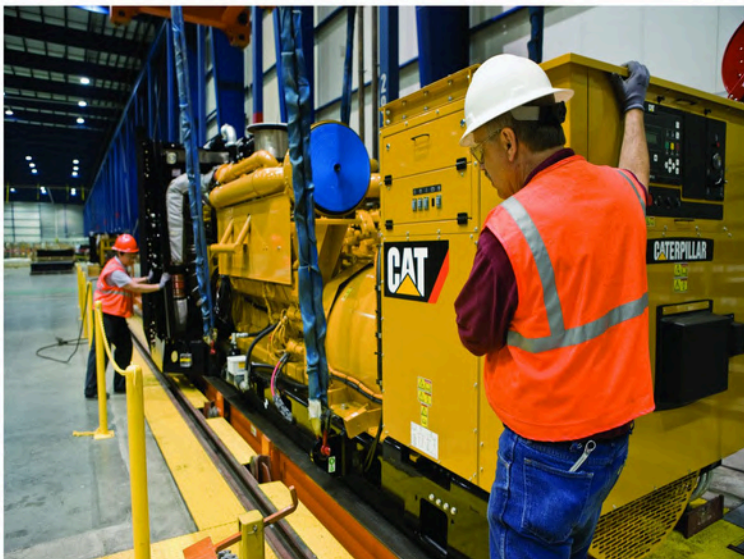
We keep your standby and prime power systems ready when you need them. Our DG maintenance service covers proactive inspection, preventive maintenance, and rapid diagnostic support to minimize downtime and extend generator life.

Comprehensive Preventive Maintenance:

Routine testing, oil and filter changes, cooling system checks, battery health assessments, and control system verification.

Performance and load Testing:

Regular load bank testing to simulate peak demand
Runtime analysis to assess endurance and performance
Verifies readiness before critical outages
Ensures capacity meets operational needs reliably.



Comprehensive Care:

Comprehensive care covers all critical systems. Fuel system checks to prevent stale or contaminated fuel issues. Regular oil and filter changes for clean, efficient operation. Cooling system inspections to avoid overheating and failures. Battery health and control system verification for reliable starts

Documentation Log Book:

Full documentation for every service visit.
Detailed reports and maintenance logs provided.
Audit-ready records to support compliance.
Accessible history to track asset health over time.



Wide Coverage:

Wide coverage across Pakistan: corporate campuses, industrial facilities, and residential complexes
Critical infrastructure and essential services supported
Regional teams ensure local support and quick response
Nationwide coverage maintains consistent DG maintenance standards

PAINT & POLISHING Monthly Contracting



Residential and Commercial Specialists

Experienced professionals complete any project, interior or exterior. All kinds of painting done in a timely and respectful manner. We offer the best quality paints with a large variety of color samples.

We strive to understand exactly what you want before we start. At our company, what's important to you is just as important to us. Communication, Knowledge, Respect, Neatness, and Honesty from start to finish. We help with color choices to set moods and brighten spaces, even for kids' rooms. Residential or Commercial, Interior or Exterior—100% satisfaction is our goal.

Our Services

We work hard to bring you the best and most diverse types of services within the painting/contracting industry. Our services include:

- ▶ **FREE Estimates**
- ▶ **Interior and Exterior Painting**
- ▶ **Waterproofing and Textured Coatings**
- ▶ **Wallpaper Hanging and Removal**
- ▶ **Faux Finishing**
- ▶ **Color Consulting**
- ▶ **Floor coatings (Residential, Commercial and Industrial)**
- ▶ **Graffiti Removal and Barrier Coatings**
- ▶ **Paint Removal**
- ▶ **Hardwood Polishing**
- ▶ **Sound proofing/Sound deadening rooms**
- ▶ **Bathroom and Bath Tub Re glazing**

We work closely with our vendors to stay up to date with new trends and new products. It's this relationship that separates us from other contractors. When it comes time to make a choice on a contractor that fits your needs, we trust that you will make us as your partner

Partition and False Ceiling Monthly Contracting

Interior partition, dry lining, and suspended ceiling experts in Pakistan. Specialists in all interior fit-outs, from acoustic refurbishments to security partitions. Fire-rated industrial enclosures and hygienic hospital ceilings powered by experience.

Affordable solutions for suspended ceilings and partition installations. Supplying and installing ceilings and partitions from leading manufacturers. SES Engineering: delivering practical, compliant, and reliable interior fits.

Suspended Ceiling:

We supply and install the full range available today. We provide expert advice to match ceilings to your requirements.

Ceilings offer improved acoustics, thermal performance, and hygienic antibacterial properties. Fire-rated, moisture - resistant, and service - concealing solutions for cables, pipes, and ducts. Benefits include enhanced light reflectance and impact resistance for interiors. Materials span mineral fibre, glass fibre, rock fibre, plasterboard, and metal.



Partition Systems:

We supply and install all interior partition types, including aluminium-framed, metal stud, and frameless glazed options.

We offer fire-rated, acoustic, office, security, drywall, demountable, and privacy-focused partitions to suit any requirement. Doors, dry lining, and glazed partitions with manifestations are all available within our system options. No matter the need, we provide compatible interior partition or drywall solutions for every project.



Glass Partition:

Frameless and framed glass partitions for modern offices and open plans. Acoustic performance options to suit privacy needs without visual isolation. Safety and compliance: laminated/safety glass, toughened glass, and fire-rated variants.

Hardware choices include minimalist frames, metal studs, and concealed fixings.

CARPENTRY & FLOORING

Monthly Contracting



Residential and Commercial Carpentry & Flooring

Our carpentry professionals understand the strict regulations governing commercial settings and provide all required documentation (proof of insurance, liability, workers' compensation, etc.) before starting any project.

Our skilled team also fabricates and fits cabinets, blinds, crown molding, and other intricate elements that complete the look of a space. From conceptual framing to fine detailing, we deliver reliable craftsmanship across commercial and residential carpentry.

Our Services

We work hard to bring you the best and most diverse types of services within the Wooden work for Residential, Offices and Commercial work.

- ▶ Wooden wall installation and repair
- ▶ Kitchen Remodelling
- ▶ Wooden Flooring Deck
- ▶ Wooden Doors / Windows
- ▶ Office Space build-outs
- ▶ Office / Retail renovations /wooden works
- ▶ Restaurant Wooden Works
- ▶ Window installation and replacement
- ▶ Doors
- ▶ LCD Cabinets / Cadenza
- ▶ Tile Fixing
- ▶ Carpet Tiles
- ▶ Wooden Flooring
- ▶ LVT Flooring

We work closely with our vendors to stay up to date with new trends and new products. It's this relationship that separates us from other contractors. When it comes time to make a choice on a contractor that fits your needs, we trust that you will make us as your partner.

Group Profile

General order supplies



Why Choose Us

At Smart Solution, we pride ourselves on offering world-class products at competitive prices. As a professionally run company, we adhere to the highest quality standards in the industry to ensure our customers receive the best.

01

Commitment to Quality

We have cultivated strong, long-lasting relationships with our customers by providing high-quality products. Our dedicated team conducts regular quality assessments on sourced products before they are dispatched, ensuring that only the best make it to our clients. .

02

Efficient Infrastructure

Our commitment to constant market research keeps us closely connected with our clients, allowing us to understand and meet their preferences accurately. These efforts ensure that we deliver flawless products that exceed customer expectations. At Smart Solution, customer satisfaction is our top priority.

03





GENERAL ORDER SUPPLIER

YOUR ONE-STOP SHOP FOR ALL YOUR NEEDS



Specialized Services for Global Trade

At Smart Solution, we offer a comprehensive range of services related to international business, including importing and exporting products. Our expertise ensures we meet our customers' diverse needs, providing tailored solutions from port to door.

ELECTRONICS

- 1 TV and Screens
- 2 Home and Office Appliances
- 3 Heating and Cooling Equipements

CONSTRUCTION SUPPLIES

- 1 Construction Material
- 2 Construction Tools
- 3 Fabricated Tools

OFFICE SUPPLIES

- 1 Office Equipment
- 2 Office Furniture
- 3 Office Supplies
- 4 Corporate Printing and Publishing

RESIDENTIAL & FURNITURE

- 1 Residential Furniture
- 2 Interior Works Material
- 3 Kitchen Utensils

SAFETY & SECURITY EQUIPMENT

- 1 Surveillance Cameras
- 2 Alarm Systems
- 3 Access Control Systems
- 4 Emergency Response Equipment

ELECTRONICS & IT EQUIPEMENTS

- 1 Computers & Laptops
- 2 Printers
- 3 Networking Equipment
- 4 Cables and Accessories
- 5 Electronics

MISCELLANEOUS

- 1 Grocery Items
- 2 Sports Goods
- 3 Trophy & Shiled
- 4 Hardware Tools





teradata.



EDOTCO

Purchase Orders

Myco
House # 2052, Street 19, Peshawar Road
Race Course Ground Rawalpindi
Phone: 051-5584677

PURCHASE ORDER
DATE 12/03/2022
PO # 1250

VENDOR
SES Engineering
CB No. 1518/10, Mehboob Lane
No. 04, Hamza Street, Peshawar Road, Rawalpindi,
Phone: +92 312 5189414 +92 311 504 7777

SHIP TO
DHA Multan

ITEM #	DESCRIPTION	QTY	UNIT PRICE	TOTAL
1	Electrical Park work DHA Multan	1	2,000,000	2,000,000.00
2	Park Main Iron Grill Work DHA Multan	1	3,500,000	3,500,000.00
3	Park Civil Work, Surface leveling, Tuff Tiles & Drain	1	5,500,000.0	5,500,000.00
			SUBTOTAL	11,000,000
			TOTAL	11,000,000

Comments or Special Instructions
Mode of Payment: Cash and Cheque

It's a System Generated PO
Myco : House # 2052, Street 19, Peshawar Road Rawalpindi



Global Cloud Support Services
www.gcscs247.com

GCSS

22nd November, 2016
Re: Samar Engineering Services Rawalpindi

To Whom It May Concern

Mr. Samran Khalid S/o Khalid Mehmood CNIC 37201-031129-5 from M/S Samar Engineering Services Rawalpindi is associated with Global Cloud Support Services since February 2016 as Contractor / Outworker to provide services in installation, repairing and maintenance of additional air-conditioning units.

We found him a thorough professional who possesses good knowledge of his field. He is honest, hardworking and reliable resource. We wish him best of luck in his future endeavours.

Mr. Farhan Malik
Global Cloud Support Services
(SMAC-Pvt) Limited



ELIXIR TECHNOLOGIES
ELIXIR TECHNOLOGIES PAKISTAN (PVT) LIMITED
Arcade 66, Plot No. 55
Civic Center, Executive Block
Gulberg Greens - Islamabad, PAKISTAN
+92 51 5912910 - 13 | elixir.com

PURCHASE ORDER
DATE 10/10/2024
PO # 51452

VENDOR
SES Engineering
CB No. 1518/10, Mehboob Lane
No. 04, Hamza Street, Peshawar Road, Rawalpindi,
Phone: +92 312 5189414 +92 311 504 7777

SHIP TO
Prime Minister House (CDA Project)

ITEM #	DESCRIPTION	QTY	UNIT PRICE	TOTAL
1	Complete Roof Top Civil Work	1	825,000.00	825,000.00
2	Complete HVAC Servicing, Electrical Work, Uplifting and Shifting, Ducting & DB Work	1	7,500,000.00	7,500,000.00
3	Complete GI Plumbing work Includes Dismantling old Pipes and Uprasing and Reinstallation of Pipes	1	5,500,000.0	5,500,000.00
			SUBTOTAL	13,825,000
			TOTAL	13,825,000

Comments or Special Instructions
Mode of Payment: Cash and Cheque

It's a System Generated PO
Myco : House # 2052, Street 19, Peshawar Road Rawalpindi





AEOTM
P A K I S T A N



Purchase Orders



VISUAL SOFT
305/2, St. 19, Westridge 1, Rawalpindi, Pakistan
contact.vsi@visualsoft-inc.com

PURCHASE ORDER

Purchase Order Number: PK10005689
Date: May 1, 2023

Vendor Information

Vendor Name	SES Engineering Services		
Address	CB No. 1518/10, Mehboob Lane No. 04, Hamza Street, Peshawar Road, Rawalpindi,		
Vendor Number	0158	Vendor Catalogue	Renovation & Construction
Attention	Procurement Manager		

Order Details

Ordered By	Group Owner
Budget Code	092156
Delivery Deadline	May 12, 2023
Payment term	30 Days

Item #	Description	Quantity	Unit Price	Total
1	Installation of 8 IT Racks (42 U APC)	8	200,000	1,600,000
2	APC UPS Back Up Solution (20 KVA)	2	650,000	1,300,000
3	Complete Electrical and IT Wiring Work Complete along with Power DB Testing and Commissioning	1	1,200,000	1,200,000
Subtotal				4,100,000
Tax (15%)				615,000
Grand Total				4,715,000

Special Instructions

1. All items must be delivered to the Main Head Office
2. Payment terms: 50% advance, 50% upon delivery.
3. Warranty: 12 months for equipment.

It's a System Generated PO



VISUAL SOFT
305/2, St. 19, Westridge 1, Rawalpindi, Pakistan
contact.vsi@visualsoft-inc.com

PURCHASE ORDER

Purchase Order Number: PK10006723
Date: April 5, 2024

Vendor Information

Vendor Name	SES Engineering Services		
Address	CB No. 1518/10, Mehboob Lane No. 04, Hamza Street, Peshawar Road, Rawalpindi,		
Vendor Number	0158	Vendor Catalogue	Renovation & Construction
Attention	Procurement Manager		

Order Details

Ordered By	Group Owner
Budget Code	092156
Delivery Deadline	July 12, 2024
Payment term	60 Days

Item #	Description	Quantity	Unit Price	Total
1	Servicing & Repairing of 6 Fountain	6	200,000	1,200,000
2	Configuration with Software's & Nozzles synchronization	6	350,000	2,100,000
3	Replacement of Nozzles and Motors and Plumbing work	6	450,000	2,700,000
Subtotal				6,000,000
Tax (15%)				900,000
Grand Total				6,900,000

Special Instructions

1. All items must be delivered to the Prade Ground Isb
2. Payment terms: 50% advance, 50% upon delivery.
3. Warranty: 12 months for equipment.

It's a System Generated PO



INTERCARGO
LOGISTICS SIMPLIFIED

PURCHASE ORDER

INTERCARGO.COM

Supplier Details:

SES Engineerings
CB No. 1518/10, Mehboob Lane
No. 04, Hamza Street, Peshawar
Road, Rawalpindi,
Vendor Reg #: 25956

PO No: 200036895
25 June 2022

NO	DESCRIPTION	QTY	PRICE	TOTAL
1	Supply of 2 TON AC	1	275,000	275,000
2	Supply of 1 Ton AC	1	115,000	115,000
3	Pipes and Installations	2	20,000	20,000
4	Transportation	1	5,000	5,000

Sub Total : 415,000
Tax 15% : 0

PAYMENT METHOD: **GRAND TOTAL: 415,000**

Cash

Thank you for business with us!

Term and Conditions:

Payment will be through cash 50 %
Advance on Key Material Delivery.
Remaining 50% After completion of work

Notice: This Purchase Order (PO) is system-generated; for any issue or discrepancy, please contact the relevant business owner listed on the PO.

INTERCARGO
LOGISTICS SIMPLIFIED

Legal Documents

Initial Date of Registration in PEC: Jul 30, 2025

Serial No. 621832
PEC-11

Scan QR code to view details.

PAKISTAN ENGINEERING COUNCIL
Licence No: 92545 Category: C6 Validity: 30 June, 2026

LICENCE OF PAKISTANI CONSTRUCTOR/OPERATOR
(Under the bye-laws of Pakistan Engineering Council 1987)

This is to certify that M/s SES ENGINEERING (Licencee), with its registered office at OFFICE NO.2,2ND FLOOR, HAROON PLAZA, IJP ROAD NEAR PSO PUMP, ISLAMABAD, have been licenced under Construction and Operation of Engineering Works Bye-laws 1987, until the validity date to construct/open engineering works, the construction/capital cost of which does not exceed Rs. 25 (TWENTY FIVE) Million provided the licencee fulfils all the qualification requirements prescribed by Client or Employer for a particular engineering work; and subject to the licencee continuing to fulfill all the requirements of the bye-laws.

Field of Specialization BC01 - BC02 - BC04 - C6 (II) - CE01 - CE04(v) (Irrigation Only) - CE08 - CE09 - CE10 - EE01 - EE02 - EE03 - EE04 - EE06 - EE07 - EE08 - EE10 - EE11(i) (Solar) - EE11(ii) (Solar Energy) - EE11(iii) (Solar Energy system) - EE11(vi) (Solar Installation) - EE11(vi) (General Electrical Works Only) - EE11(xv) (Solar Power) - (TWENTY THREE ONLY) (Specialization Code Nos. for detail see overleaf)

Date of Issue: 30-Jul-2025
(Islamabad)

Note:

1. If a firm does not get renewal of its licence within a year after expiry of its licence, the firm may be renewed after payment of outstanding fee if entire defaulting period plus surcharge at the rate of 5% of defaulting fee amount, or as prescribed from time to time.
2. The employer must ensure employment of engineers whose names are mentioned on backside of the licence. The Consulting Engineer (the Engineer Incharge in case the consultant is not appointed) shall monitor the number of engineers employed by the Constructor/Operator and inform the Council accordingly.
3. Owner(s) of the firm shall be held responsible, if any information, document or paper submitted by him/them is found incorrect or forged.

Registrar
Pakistan Engineering Council,
Islamabad.

Registration No 3720101313295
Reference No 7155713-2
Registered for Sales Tax Yes, w.e.f. 11-APR-16
Name SAMRAN KHALID
Category Pakistani Male
PP/REG/INC No. 3720101313295
Email sam****hal****ymail.com
Cell 00923**518**14
Address
Registered On 01-JAN-2016
Tax Office RTO RAWALPINDI
Registration Status Income Tax: Active , Sales Tax: OPERATIVE

Sr.	Business/ Branch Name	Business/ Branch Address	Principal Activity
1	SES ENGINEERING	Office No.2, 2nd Floor ,Haroon Plaza, IJP Road , near PSO Pump, Islamabad	439000-Construction/Other specialized construction activities/Other specialized construction activities

Group Profile

Our Strategic Product Partners



Group
Profile

Our Cleints



CIKLUM



STATE LIFE
INSURANCE CORPORATION OF PAKISTAN





Contact Us



Office 5 2nd Floor Haroon Plaza
IJP Road Near PSO Pump Rawalpindi

House # 1966 Street 61 Usman Block
Bahria Town Phase 8 Islamabad



+92 311 504 7777
+92 312 518 9414



tabishreyaz@gmail.com
samrankhalid@ymail.com



sesengineerings.com



SCAN ME
DETAIL PROFILE



SCAN ME
DETAIL PROFILE



SCAN ME
DETAIL PROFILE

