

WHITE WINE

| | Country | Dry/Sweet | Glass | 175ml | Bottle |
|-------------------------------|----------------|------------------|--------------|-------|---------------|
| Yellow Tail Chardonnay | Australia | Sweet | 5.5 | | 19 |

An all-time popular varietal, Chardonnay has a rich creamy finish while being silky smooth and easy to drink. Rich and vibrant, with fresh peach and melon flavours and a hint of vanilla.

| | | | | | |
|---------------------------------------|-------|-----|-----|--|----|
| Mudhouse Chile Sauvignon Blanc | Chile | Dry | 5.5 | | 20 |
|---------------------------------------|-------|-----|-----|--|----|

This zesty Chilean Sauvignon Blanc white wine is rich in fruit intensity and vitality, with generous flavour complexity and refreshing crispness.

| | | | | | |
|--|-------------|-----|-----|--|----|
| Brancott Estate Sauvignon Blanc | New Zealand | Dry | 6.5 | | 23 |
|--|-------------|-----|-----|--|----|

Sweet ripe fruit characters with delightful mix of citrus, floral, pear and tropical fruit and crisp nettle highlights abound.

RED WINE

| | Country | Dry/Sweet | Glass | 175ml | Bottle |
|------------------------------------|----------------|------------------|--------------|-------|---------------|
| Hardys (VR or STAMP) Shiraz | Australia | Sweet | 5.0 | | 16 |

Rich dark cherry, spice, and blood plums on the front palate. The wine has a juicy yet soft texture with fine tannins and a dry finish.

| | | | | | |
|-------------------------------|--------|------------|-----|--|----|
| Chateau de l'Orangerie | France | Semi-sweet | 6.0 | | 22 |
|-------------------------------|--------|------------|-----|--|----|

Dark cherry and plum aromas with subtle hints of spice. On the palate, subtle tannins with a soft finish. Altogether well balanced and rounded.

| | | | | | |
|--|--------|-----|-----|--|----|
| Cave De Buxy Bourgogne Pinot Noir | France | Dry | 9.0 | | 35 |
|--|--------|-----|-----|--|----|

A soft and elegant wine with ripe raspberry and blackberry aromas, balanced by fresh and layered fruit flavours.



A discretionary 10% service charge will be added to your bill.
In case of any allergy or food intolerance please inform your waiter.



ROSE WINE

| | Country | Dry/Sweet | Glass | 175ml | Bottle |
|--|----------------|------------------|--------------|-------|---------------|
|--|----------------|------------------|--------------|-------|---------------|

La Vieille Ferme

| | | | |
|--------|-----|-----|----|
| France | Dry | 5.5 | 19 |
|--------|-----|-----|----|

Gives inimitable aromas and contains flavours of green apple, acacia blossom and full-flowering wisteria.

Fiore Rosa Pinot Grigio

| | | | |
|-------|-----|-----|----|
| Italy | Dry | 5.5 | 20 |
|-------|-----|-----|----|

A dry, fresh and fruity rose with delicate aromas of red berries. This rose has a great intensity of ripe berry and red cherry fruit that give a soft and creamy texture followed by a vibrant finish.

SPARKLING WINE

| | Country | Dry/Sweet | Glass | 175ml | Bottle |
|--|----------------|------------------|--------------|-------|---------------|
|--|----------------|------------------|--------------|-------|---------------|

Prosecco Rose

| | | | |
|-------|-----|--|----|
| Italy | Dry | | 25 |
|-------|-----|--|----|

An elegant and sparkling Prosecco Rose, bursting with vibrant notes of fresh strawberries, raspberries, and delicate blossoms. It offers a bright, crisp texture and a refreshing citrus finish. Perfect for those seeking a vegan-friendly option.

Prosecco White

| | | | |
|-------|-----|--|----|
| Italy | Dry | | 25 |
|-------|-----|--|----|

Golden straw with lively effervescence and fresh aromas of citrus, apple and flowers. Clean and fresh on the palate with tones of ripe lemon, green apple and grapefruit. The finish is light and fresh.

CHAMPAGNE

| | Country | Dry/Sweet | Bottle |
|--|----------------|------------------|---------------|
|--|----------------|------------------|---------------|

Moët & Chandon Rose Imperial

| | | |
|--------|----------|----|
| France | Semi-dry | 65 |
|--------|----------|----|

Lively and generous, Rose Imperial distinguishes itself by a radiant colour, an intense fruitiness and flamboyance on the palate, that instantly seduce and delight. The colour is a glowing pink with dominant red tones and purple highlights.

A discretionary 10% service charge will be added to your bill.
In case of any allergy or food intolerance please inform your waiter.



S A K E

| | | |
|-----------------------------------|-------|----|
| Hakushika Cho-Kara (hot) | 180ml | 6 |
| Homare Junmai Yuzu Aladdin (cold) | 300ml | 13 |
| Homare Junmai Aladdin (cold) | 300ml | 14 |
| Gozu No Mine Junmai (cold/hot) | 720ml | 35 |
| Koshi No Ajiwai Daiginjo | 720ml | 48 |
| Choya Royal Honey Plum Wine | 700ml | 70 |
| Aisakura Junmai Daiginjo* | 720ml | 70 |

*Enjoying it slowly and savouring it



S O J U



| | | |
|---------------------------------------|-------|----|
| Chamisul Fresh (16.5%), Jinro (16.5%) | 350ml | 13 |
| Classic (20.1%) | 350ml | 14 |
| Fruit Flavoured Soju (13%) | 350ml | 12 |

Flavours include peach, grape, plum, grapefruit and strawberry

J A P A N E S E B E E R

| | | |
|--------------|-------|---|
| Asahi | 330ml | 5 |
| Sapporo | 330ml | 5 |
| Kirin | 330ml | 6 |
| Alcohol-free | 330ml | 5 |



A discretionary 10% service charge will be added to your bill.
In case of any allergy or food intolerance please inform your waiter.



SOFT DRINK

| | | | | |
|--------------------------------|-------|-----|------------------------------|-----|
| Still Water (bottle) | 600ml | 2.8 | Milkis (Original/Strawberry) | 3.0 |
| Still Water (glass bottle) | 750ml | 3.8 | Sanpellegrino Lemon/Orange | 3.0 |
| Sparkling Water (bottle) | 500ml | 3.0 | Coke (Original/Diet/Zero) | 3.0 |
| Sparkling Water (glass bottle) | 750ml | 4.0 | 7UP (Zero)/ Spirite | 3.0 |
| Peach Iced Tea | | 3.8 | J2O Orange and Passionfruit | 3.8 |
| Appletiser | | 3.0 | Apple/Orange Juice | 3.5 |

POT OF TEA



| | |
|-------------------------------------|-----|
| Hot/Iced Yuja Tea (Citron) | 3.8 |
| Jasmine Tea | 4.0 |
| Organic Japanese Green Tea (Sencha) | 4.0 |
| Flower Blooming Tea | 4.0 |

DESSERTS

Matcha ice cream 4

Mochi ice cream (3 pcs) 5

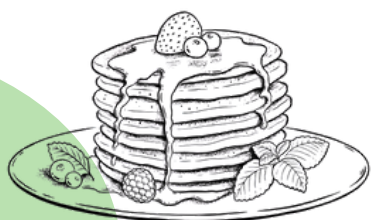
Strawberry, mango, coconut, chocolate
Choose your flavour

Pancake 6

with matcha ice cream, strawberries, whipped
cream and maple syrup

Waffle 6

with matcha ice cream, strawberries, whipped
cream and maple syrup



A discretionary 10% service charge will be added to your bill.
In case of any allergy or food intolerance please inform your waiter.