

Evolving Inner Awareness: A Mindful Path

3/29/2026

Janice Schultz

Meeting Agenda

1. Foundations of Inner Awareness
2. Transforming Emotional Patterns
3. Sustaining Mindful Growth



Foundations of Inner Awareness

Welcome to Your Inner Journey

Uncovering Why We Feel Stuck

Feeling stuck often comes from hidden subconscious patterns, not a lack of effort.

The Limits of Willpower

Willpower works in the conscious mind, but lasting change requires aligning with the subconscious.

The Power of Mindful Awareness

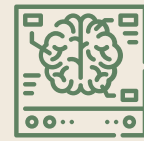
Gentle self-observation reveals the roots of our habits and opens the door to transformation.

A Compassionate Path Forward

Growth begins with acceptance and curiosity, not self-criticism or force.



The Mind's Two Operating Systems



Two Minds, Two Missions

The conscious mind sets goals and makes decisions, while the subconscious manages habits and survival strategies.



Habits Run on Autopilot

Subconscious patterns drive automatic behaviors, often rooted in early life experiences.



Survival Overrules Willpower

When conscious intentions clash with subconscious programming, the subconscious usually wins—especially under stress or fatigue.



Awareness Unlocks Change

Recognizing these hidden patterns is the first step to real transformation.

Awareness: The First Step to Change



Observe Without Judgment

Notice thoughts and emotions as they arise, letting go of self-criticism.



Reveal Hidden Patterns

Mindful awareness uncovers subconscious habits and emotional triggers.

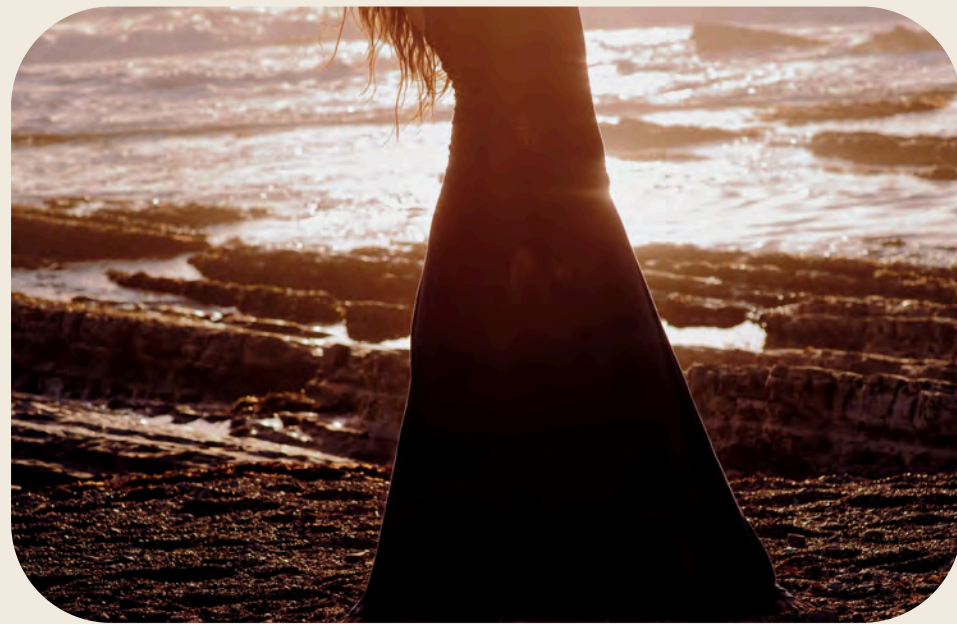


Cultivate Compassionate Curiosity

Replace harsh self-talk with gentle inquiry to support growth.

Transforming Emotional Patterns

Releasing Old Emotional Charges



Uncovering Hidden Emotional Patterns

- Stored emotions and protective beliefs often operate beneath awareness, quietly shaping reactions and keeping you in familiar cycles.



Gentle Release Practices

- Use mindful observation, breathwork, and body scans to notice and soften areas of tension or emotional charge.
- Approach your patterns with compassion, not force, allowing old energy to move and release naturally.



Creating Space for Growth

- Letting go of outdated patterns opens space for new beliefs, habits, and possibilities to emerge.

Meeting Your Inner Protector



Recognize Your Inner Protectors

Notice recurring patterns and the roles they play in keeping you safe.



Honor Their Original Purpose

Acknowledge these parts as intelligent adaptations from earlier life experiences.



Practice Compassionate Awareness

Meet these protective parts with curiosity, not judgment, to foster inner trust.



Gently Outgrow Old Strategies

Mindful observation helps you move beyond outdated survival responses.

Rewiring Beliefs and Identity



Transform Identity, Not Just Habits

Lasting change comes from updating your core self-image, not just forcing new behaviors.



Adopt Beliefs That Feel Safe and True

Choose new beliefs that your body and mind can genuinely accept, creating a sense of inner safety.



Anchor Change with Repetition and Emotion

Reinforce new patterns through consistent practice and by connecting them to positive feelings.

Embodiment: Living the New You

Shift from Knowing to Being

Let insights move beyond thought into daily lived experience.

Practice Aligned Actions

Choose small, consistent behaviors that reflect your evolving self.

Integrate Change Naturally

Allow transformation to unfold as a seamless part of your life.

Notice Subtle Shifts

Pay attention to moments where your responses feel more authentic.

Celebrate Embodied Growth

Acknowledge progress as you live from your new identity.



Sustaining Mindful Growth

Navigating Triggers with Mindfulness



Transform Triggers into Growth Opportunities

View emotional reactions as signals pointing to areas ready for healing.



Pause and Observe with Curiosity

Gently notice sensations and emotions without judgment or rush.



Trace Triggers to Their Roots

Ask what wound or belief is being activated beneath the surface.



Choose Conscious, Aligned Responses

Replace old patterns with responses that reflect your evolving self.

Sustaining Growth Through Joy and Boundaries

Joy as Nervous System Nourishment

- Laughter and pleasure signal safety, shifting the body from stress to restoration.
- Moments of delight help reset the body's stress response.

Boundaries Foster Authentic Connection

- Healthy boundaries clarify where you end and others begin, supporting self-respect.
- Saying 'no' or 'yes' authentically restores balance and prevents emotional fatigue.

Joy Replenishes and Sustains Growth

- Allowing yourself pleasure and playfulness replenishes energy for transformation.
- Joy is a resource, not a luxury—supporting resilience and creativity.



Carrying Awareness Forward

From Awareness to Embodiment

Transformation begins with noticing patterns, then moves to releasing old emotional charges and embodying new, aligned beliefs.

The Power of Mindful Presence

Mindful observation brings subconscious habits into the light, allowing for gentle, sustainable change.

Practice, Self-Compassion, and Curiosity

Continued growth comes from consistent practice, treating yourself with kindness, and staying open to new insights.

