



COMPANY PROFILE

2024-2025



+243 821 919 112

64, Okito street, Industrial
district Kolwezi, Lualaba

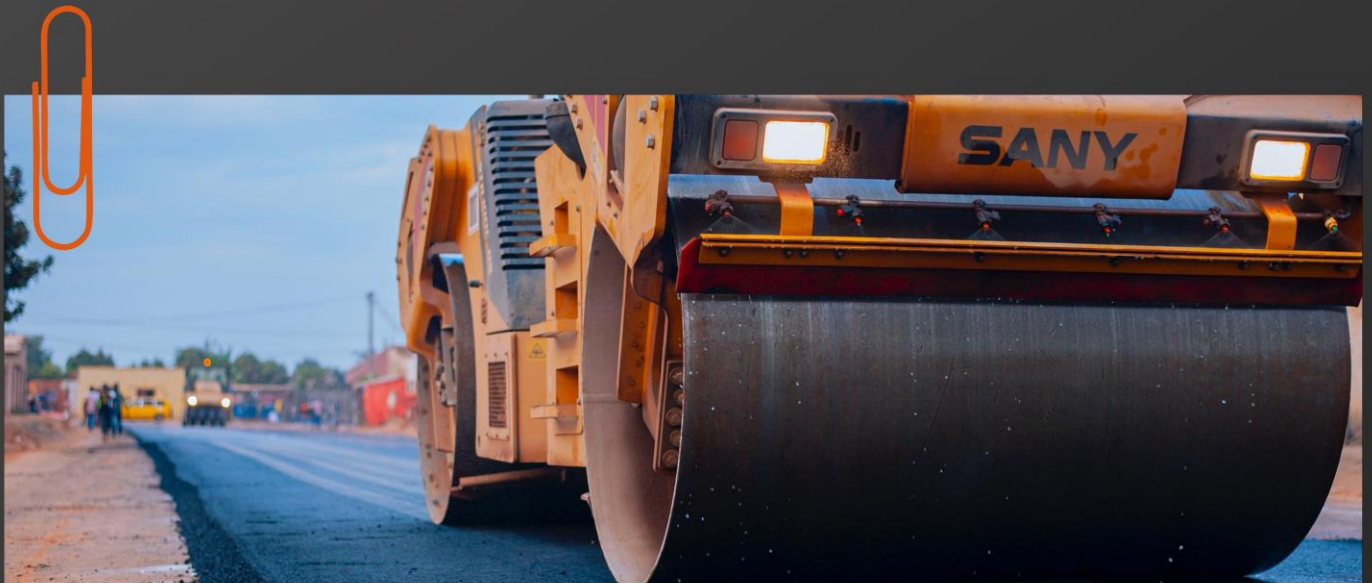
info@sabaoth-cons.com

COMPANY OVERVIEW

SABAOTH CONSTRUCTION is a leading civil engineering and public works company based in the Lualaba Province of the Democratic Republic of Congo. With solid technical expertise and a passion for excellence, we specialize in the construction of roads, drainage systems, public and private buildings, and industrial hangars.

OUR MISSION

To design and deliver infrastructure projects that are durable, innovative, and aligned with international quality standards. Our goal is to contribute to national development by providing reliable and impactful solutions for communities and industries.



COMPLIANCE & CERTIFICATIONS

SABAOTH CONSTRUCTION operates in full compliance with national laws and industry regulations. Our certifications and recognition by government authorities ensure transparency, legal integrity, and adherence to technical requirements.



CORE EXPERTISE

Road Construction: Surfacing, paving, and rehabilitation of urban and interurban roads.

Drainage Systems: Planning and installation of stormwater channels, culverts, and flood control structures.

Building Projects: Construction of schools, hospitals, administrative offices, residential and commercial buildings.

Industrial Hangars: Design and assembly of high-durability warehouses and manufacturing facilities.



WHY CHOOSE US?

At SABAOTH CONSTRUCTION, excellence isn't an option — it's our standard. Clients choose us not only for the quality of our work, but for the values that guide every step of our operations.

Technical Mastery

Experienced engineers and site managers dedicated to quality results.

Deadline-Driven

Rigorous planning and execution to ensure timely delivery.

4 main reasons

Modern Approach

Use of up-to-date materials and technologies for high-performance structures.

Local Impact

Rigorous planning and execution to ensure timely delivery.

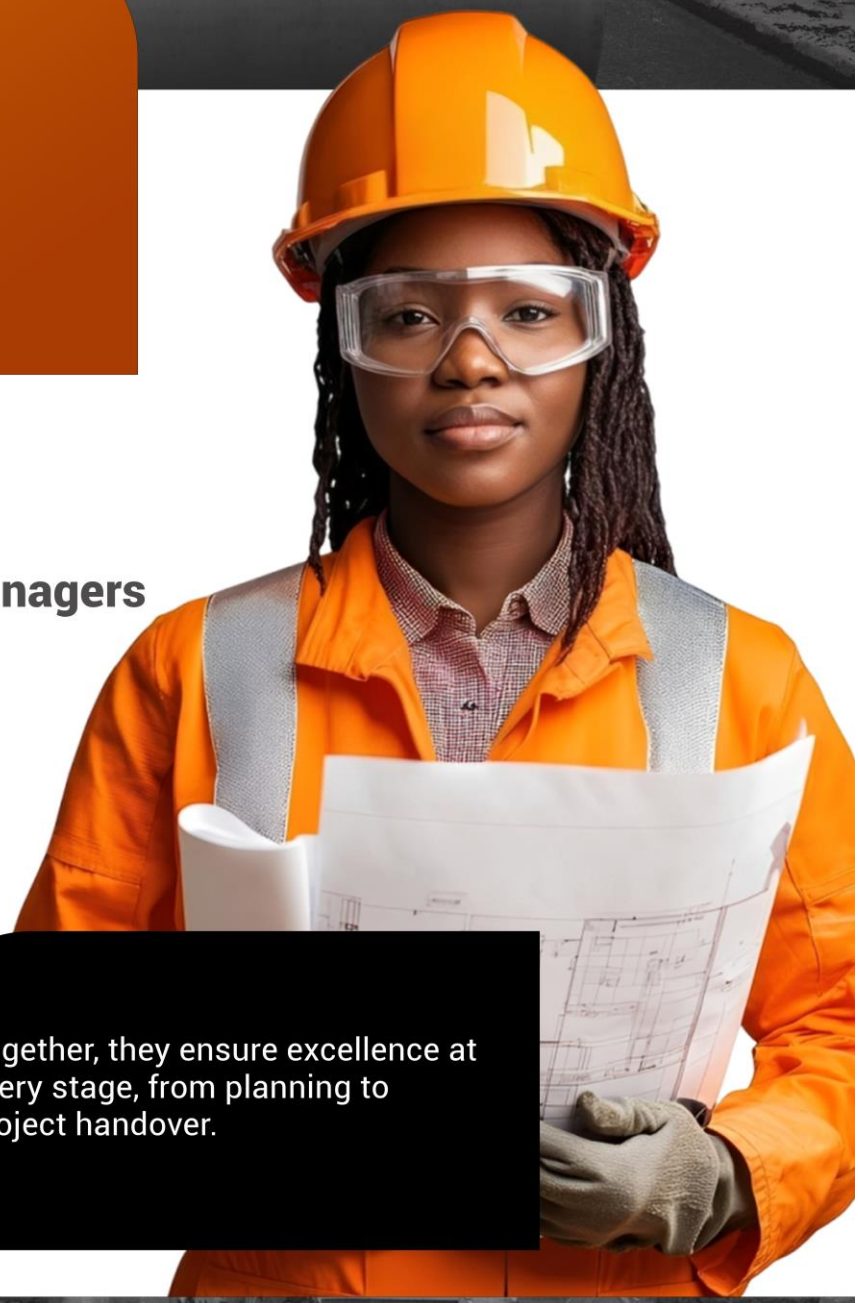




OUR TEAM

SABAOTH CONSTRUCTION is powered by a motivated and skilled team:

- **Civil Engineers & Project Managers**
- **Specialized Technicians**
- **Site Coordinators**
- **Quality Control Experts**



Together, they ensure excellence at every stage, from planning to project handover.



OUR PROJECTS

Over the years, **SABAOTH CONSTRUCTION** has successfully delivered a wide range of infrastructure projects that reflect our dedication to technical excellence, reliability, and community impact. Each undertaking showcases our ability to transform complex plans into tangible results, meeting the highest standards of quality and safety. From roads that connect communities to buildings that serve future generations, our portfolio speaks volumes:

Asphalting & Drain Construction on Soke Avenue



ASPHALTAGE ET CONSTRUCTION DE DRAINS
AVENUE SOKE
LUALABA, KOLWEZI, JOLI SITE

Asphalting & Drain Construction on Soke Avenue



ASPHALTAGE ET CONSTRUCTION DE DRAINS
AVENUE SOKE
LUALABA, KOLWEZI, JOLI SITE

Asphalting & Drain Construction on LUILU road



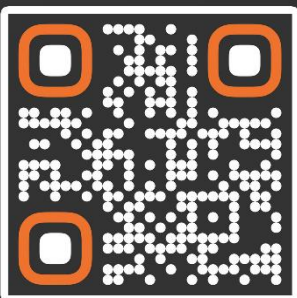
ASPHALTAGE ET CONSTRUCTION DE DRAINS
ROUTE LUILU
LUALABA, KOLWEZI, RN 39



FUTURE OBJECTIVES

Our vision is to be the preferred partner for infrastructure development across the DRC by expanding into new regions, continuously improving technical capabilities, and delivering transformative projects that support economic growth.

CONTACTS



+243 821 919 112

64, Okito street, Industrial
district Kolwezi, Lualaba

info@sabaoth-cons.com