

# PIIL

**Power Investment  
Incubation Limited**

---

Strategic Energy Guidance.  
Legal Precision. Market Insights.

---

## **Permits & Approvals Framework**

---

*Managing Regulatory Complexity and Stakeholder  
Alignment*

Power Investment Incubation Limited  
No. 62 Newark Avenue, Sun City Estate, Abuja FCT, Nigeria  
[+2349037747809](tel:+2349037747809) (Phone/WhatsApp) | [info@powerincubation.com](mailto:info@powerincubation.com) |  
<https://powerincubation.com>

**Permits & Approvals Framework:**  
***Managing Regulatory Complexity and Stakeholder Alignment***

**ABSTRACT**

The Right Partner Framework provides a structured approach to selecting co-sponsors, advisers, and strategic partners in power project development. It recognizes that project success depends not only on technical and financial structuring, but also on the capability, alignment, and resilience of participating stakeholders.

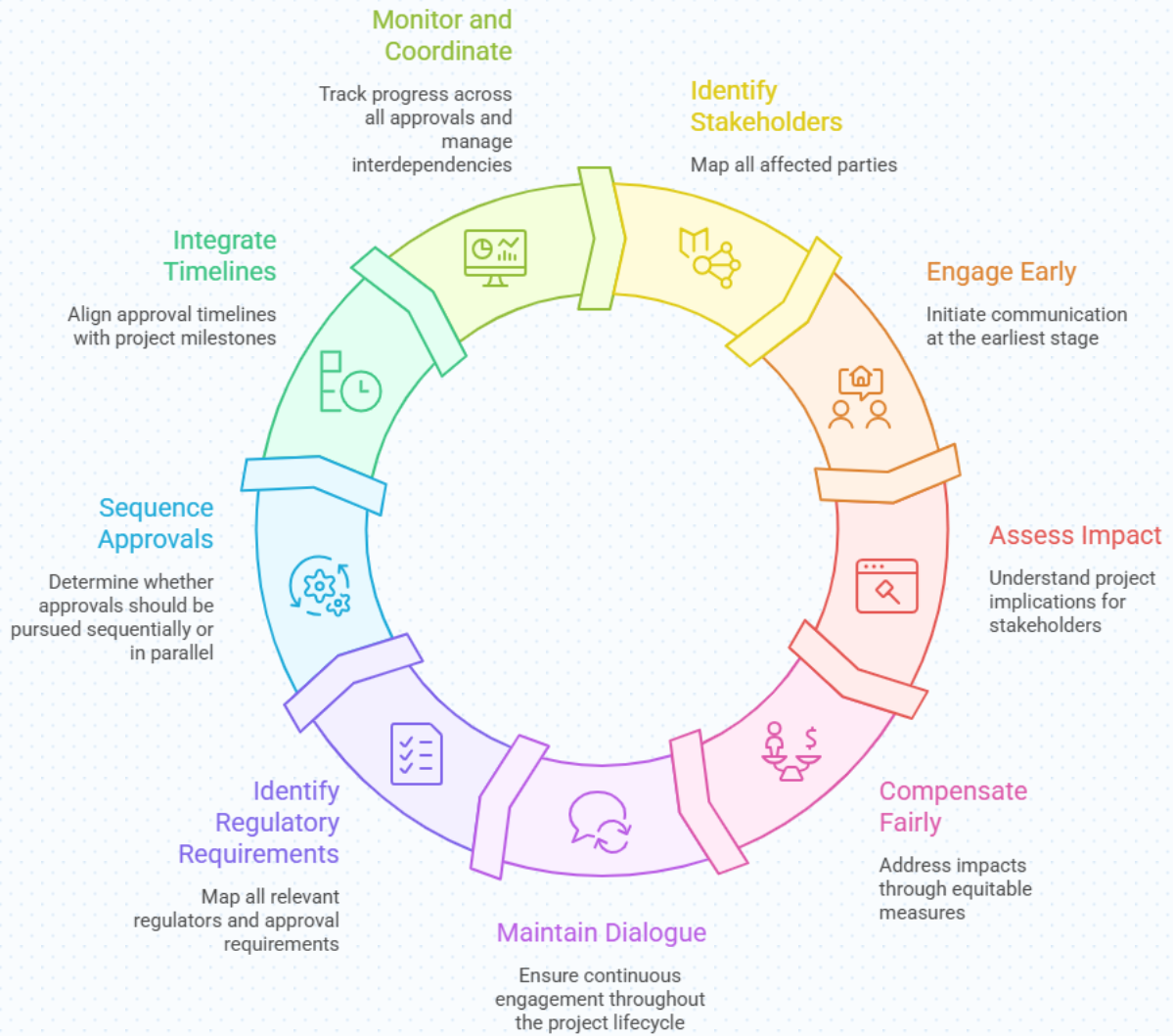
The framework evaluates partners across five critical dimensions: vision alignment, execution stamina, experience, innovation capacity, and cultural fit. By applying these criteria systematically, developers can identify partners who contribute meaningfully to project delivery and long-term stability.

Designed as both a screening and decision-making tool, the framework helps reduce execution risk and improve the likelihood of successful project outcomes.



**Dr. Nnaemeka Ewelukwa**  
**Founding Principal**

# Regulatory and Stakeholder Engagement Cycle



## **Introduction**

The Regulatory Complexity Map provides a structured approach to navigating permits, approvals, and stakeholder engagement in power project development. It categorizes regulatory requirements across business licensing, environmental, construction, financial, and fiscal domains, ensuring comprehensive coverage from early stages.

Complementing this, the Stakeholder Engagement Framework outlines a systematic process for identifying, engaging, and managing affected parties throughout the project lifecycle. Together, these frameworks address one of the most common causes of delay - regulatory fragmentation and stakeholder misalignment.

Designed as both a planning and execution tool, they help developers anticipate requirements, coordinate approvals, and maintain stakeholder support, thereby improving timelines, reducing risk, and enhancing project deliverability.

---

## **Permits & Approvals Frameworks**

### ***Managing Regulatory Complexity and Stakeholder Alignment***

Power project development is not only a technical and financial exercise - it is fundamentally a regulatory and stakeholder-driven process.

Projects often face delays not because approvals are unavailable, but because they are mismanaged, uncoordinated, or underestimated.

These frameworks provide a structured approach to:

- Navigating regulatory requirements
- Sequencing approvals effectively
- Managing stakeholder relationships

Successful projects treat permits and stakeholder engagement as strategic workstreams, not administrative tasks.

---

## **The Regulatory Complexity Map**

### ***Structuring and Managing Approvals***

#### **Core Objective**

Ensure that all required permits and approvals are identified, sequenced, and secured in alignment with project timelines.

#### **Five Regulatory Categories**

---

##### **1. Business & Licensing**

###### ***Legal authorization to develop and operate***

###### **Scope**

- Company registration and corporate approvals
- Generation licenses and sector-specific permits
- Regulatory consents from energy authorities

###### **Key Considerations**

- Licensing timelines and conditions
  - Ongoing compliance requirements
  - Alignment with sector regulations
- 

##### **2. Environmental**

###### ***Assessment and management of environmental and social impacts***

###### **Scope**

- Environmental Impact Assessment (EIA/ESIA)
- Environmental permits and approvals
- Social impact assessments and mitigation plans

## **Key Considerations**

- Baseline studies and data requirements
  - Public consultation obligations
  - Environmental management plans
- 

## **3. Construction**

### ***Authorization to build project infrastructure***

#### **Scope**

- Land acquisition and land use approvals
- Building and construction permits
- Site access and right-of-way approvals

#### **Key Considerations**

- Land title clarity
  - Interface with local authorities
  - Construction sequencing constraints
- 

## **4. Financial & Foreign Exchange (FX)**

### ***Approvals related to financing and capital flows***

#### **Scope**

- Foreign investment approvals
- Foreign exchange access and convertibility
- Debt registration and financial regulatory approvals

#### **Key Considerations**

- Repatriation of funds
- Currency risk exposure
- Compliance with central bank requirements

---

## **5. Import & Tax**

### ***Customs, duties, and fiscal obligations***

#### **Scope**

- Import permits for equipment
- Customs duties and exemptions
- Tax registrations and incentives

#### **Key Considerations**

- Eligibility for tax incentives
  - Timing of equipment importation
  - Customs clearance processes
- 

## **Applying the Regulatory Complexity Map**

### **1. Early Identification**

Map all relevant regulators and approval requirements at the outset of the project.

### **2. Sequencing Strategy**

Determine whether approvals should be pursued:

- Sequentially (where dependencies exist)
- In parallel (to reduce timeline risk)

### **3. Timeline Integration**

Align approval timelines with:

- Contracting milestones
- Financing requirements
- Construction schedule

### **4. Monitoring and Coordination**

Track progress across all approvals and manage interdependencies.

---

## **Practical Checklist**

- Are all relevant regulators identified early?
- Are approval requirements fully mapped?
- Are timelines realistic and aligned with project milestones?
- Are approvals being pursued in the correct sequence or in parallel where appropriate?
- Are dependencies between approvals clearly understood?

---

## **Common Regulatory Failures**

- Late identification of critical permits
- Underestimation of approval timelines
- Poor coordination between regulatory processes
- Misalignment between regulatory approvals and financing milestones

---

## **The Stakeholder Engagement Framework**

### ***Managing Relationships and Social License***

#### **Core Objective**

Ensure that all affected stakeholders are identified, engaged, and managed in a structured and continuous manner.

---

### **Five-Step Engagement Process**

---

#### **1. Identify Stakeholders**

##### ***Mapping all affected parties***

##### **Scope**

- Local communities

- Landowners and occupants
- Government authorities (local and national)
- Civil society and interest groups

### **Key Consideration**

Comprehensive identification reduces the risk of unforeseen objections or delays.

---

## **2. Engage Early**

### ***Initiating communication at the earliest stage***

#### **Approach**

- Transparent communication of project scope and impact
- Early consultations prior to major decisions

### **Key Consideration**

Early engagement builds trust and reduces resistance.

---

## **3. Assess Impact**

### ***Understanding project implications for stakeholders***

#### **Scope**

- Social and economic impacts
- Environmental and land use implications
- Displacement or livelihood effects

### **Key Consideration**

Impact assessment informs mitigation and compensation strategies.

---

#### **4. Compensate Fairly**

##### ***Addressing impacts through equitable measures***

###### **Approach**

- Compensation for land acquisition
- Livelihood restoration measures
- Community development initiatives

###### **Key Consideration**

Fair and transparent compensation reduces disputes and delays.

---

#### **5. Maintain Dialogue**

##### ***Ensuring continuous engagement throughout the project lifecycle***

###### **Approach**

- Ongoing communication channels
- Grievance mechanisms
- Periodic stakeholder updates

###### **Key Consideration**

Sustained engagement supports long-term project stability.

---

###### **Practical Checklist**

- Have all stakeholders been identified and categorized?
- Has engagement begun early in the project lifecycle?
- Are impacts clearly understood and documented?
- Are compensation mechanisms fair, transparent, and consistent?
- Is there a system for ongoing communication and grievance management?

---

### **Common Stakeholder Failures**

- Late engagement with affected communities
- Inadequate assessment of social impacts
- Poorly structured or delayed compensation
- Lack of ongoing communication mechanisms

---

### **Integrated Perspective**

Regulatory approvals and stakeholder engagement are closely linked:

- Environmental approvals often depend on stakeholder consultations
- Land acquisition depends on community engagement
- Delays in either area can affect financing and construction timelines

Effective project development requires coordinated management of both regulatory processes and stakeholder relationships.

---

### **Final Perspective**

Projects progress efficiently when:

- Regulatory requirements are clearly mapped and managed
- Approvals are sequenced and coordinated
- Stakeholders are engaged early and continuously
- Impacts are addressed transparently and fairly

The Permits & Approvals Frameworks provide a structured approach to achieving these outcomes.

Regulatory clarity and stakeholder alignment are not external constraints but rather essential components of successful project delivery.

---

# **Power Investment Incubation Limited**

62 Newark Avenue, Sun City Estate, Abuja FCT, Nigeria

Registration No. 1129498

<https://powerincubation.com>

+2349037747809 (Phone/WhatsApp)

[info@powerincubation.com](mailto:info@powerincubation.com)