



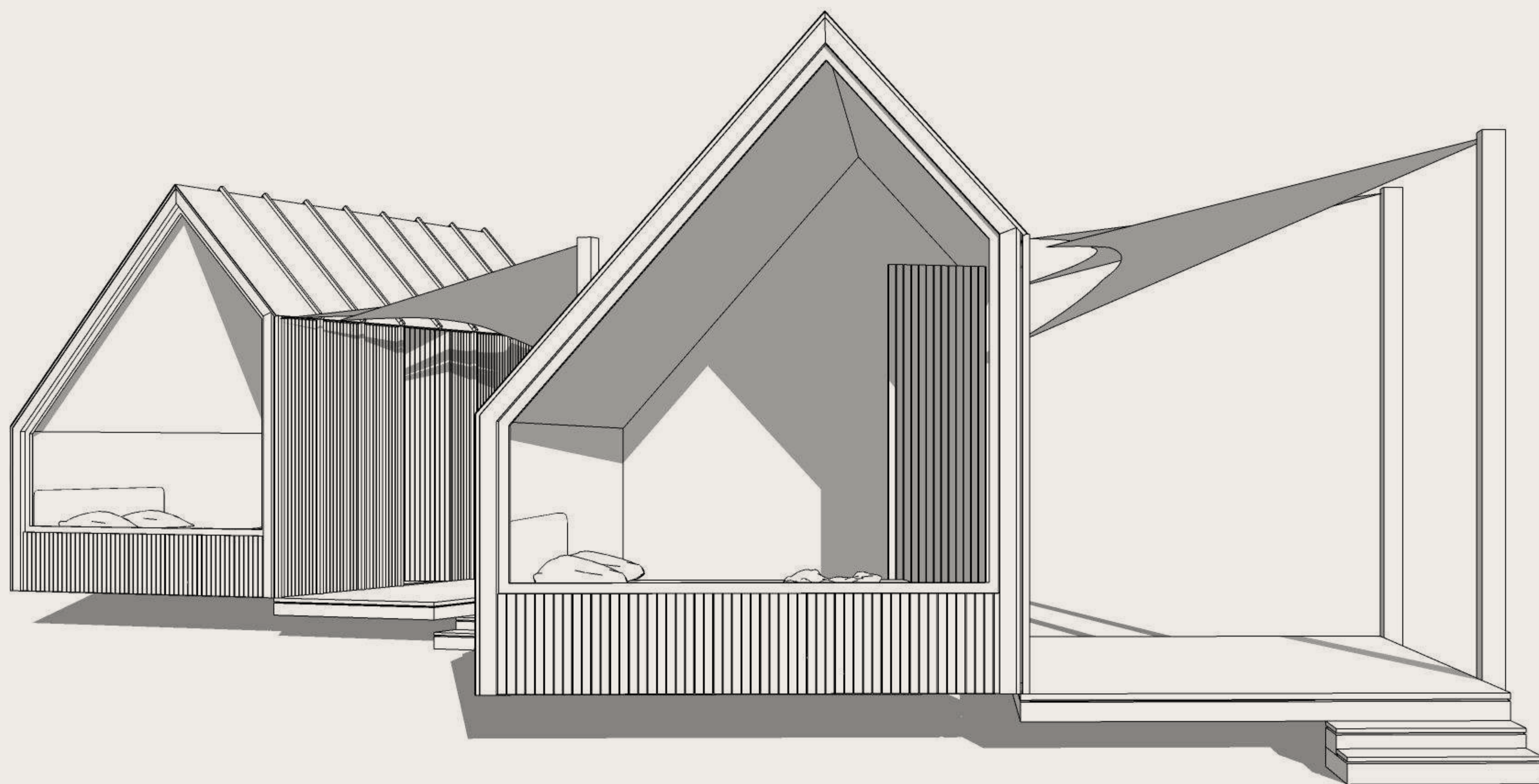
# **I Love Tiny**

nature inclusive cabins

**MODELS & PRICES 2025**

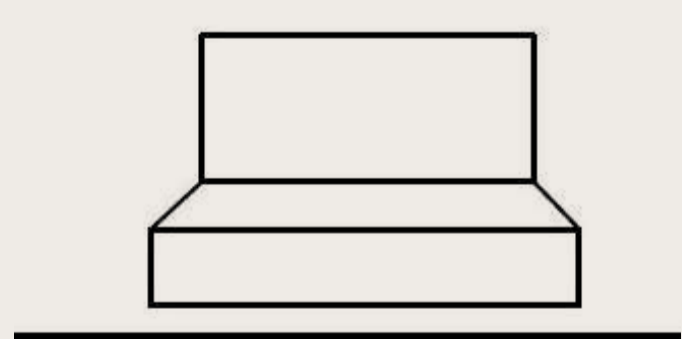
[WWW.ILOVETINY.NL](http://WWW.ILOVETINY.NL)

# Mini Pods by I Love Tiny



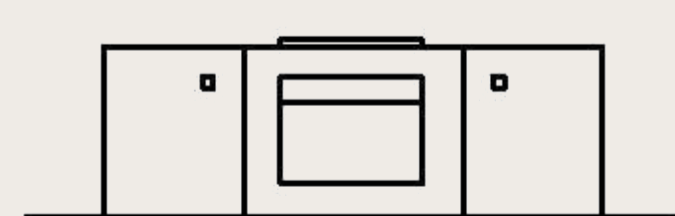
## Hotel Rooms in Nature.

The Mini Pod's unique design speaks to guests in its own language. It is a truly interesting pod to use for starting or expanding a hospitality business and turning it into success.



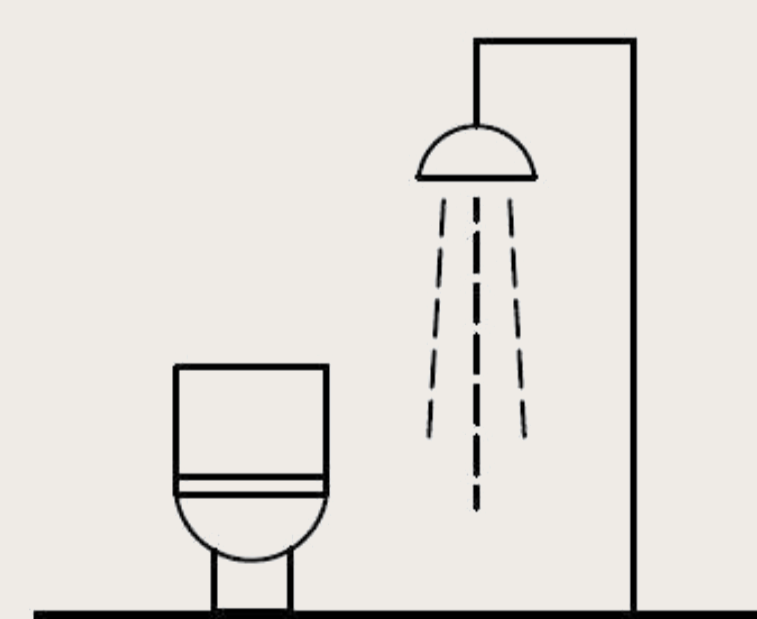
### Double bed

Full size double bed with quality mattress provides comfort for your holiday recharging.



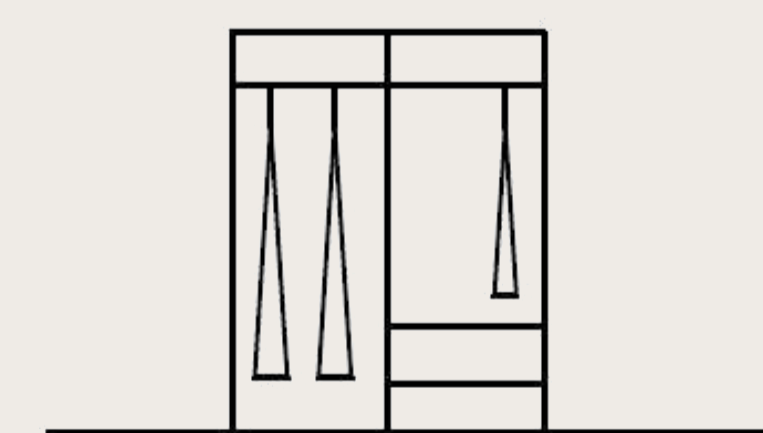
### Kitchenette

Small kitchen counter for breakfast prep with a fridge-freezer under to store some chilled wine.



### Bathing

Full-sized bathroom with a waterless toilet / Trobolo or Separett/ avoids the need of a sewage system.



### Storage

Creative storage that hides the utilities but also leaves you plenty of room for belongings.





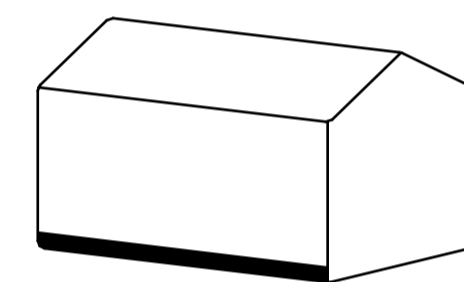
# MODEL P

## ESSENTIAL

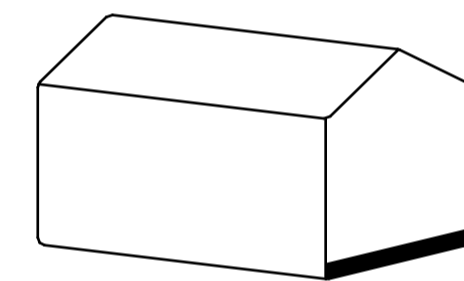
TRAILER TYPE  
PARK OR MOBILE

CAPACITY  
SLEEPS 2

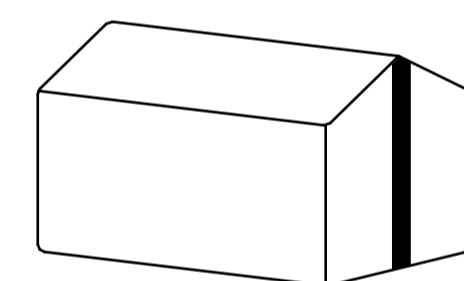
SIZE  
L 4.5M X W 2.5M, H 3.5M, AREA 11.25M2



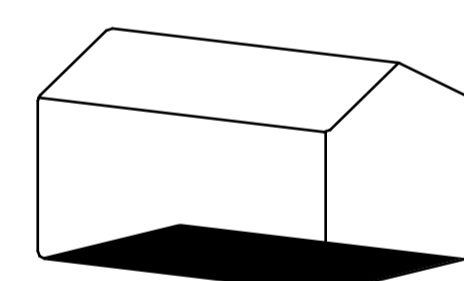
L 4.5M



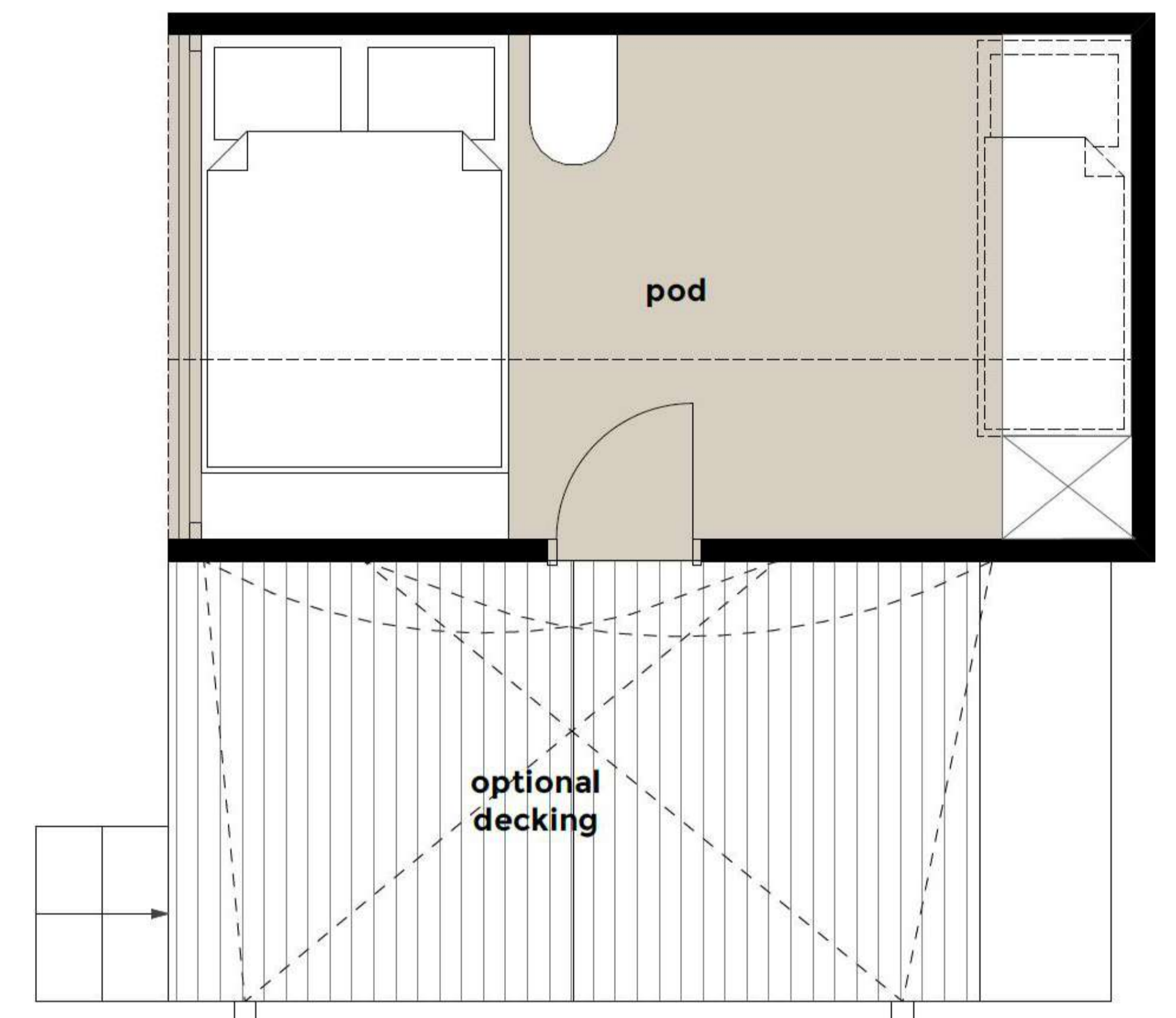
W 2.5M



H 3.5M



10M2



### finish level: **BASIC**

- fully finished exterior
- + interior walls/ceiling - untreated plywood
- + poplar plywood as base for flooring
- + plumbing installation
- + electrical installation
- + rubber insulation in floor/walls in bathroom

### finish level: **FINISHED**

- all from BASIC and
- + fully finished bathroom
- + flooring
- + oil treatment on walls and ceiling
- + switches and sockets
- + lighting
- + electrical boiler
- + interior doors

### finish level: **FURNISHED**

- all from FINISHED and:
- + furniture as per project
- + sink and faucet in kitchen

price in Euro VAT excl.	<b>25 670,-</b>
price in Euro VAT incl.	31 057,07

price in Euro VAT excl.	<b>27 475,-</b>
price in Euro VAT incl.	33 236,28

\*\*\* Discounts on multiple unit orders/above 3pcs./ are made

\* prices are excluding extras  
\*\* prices are excluding delivery and installation





TINY

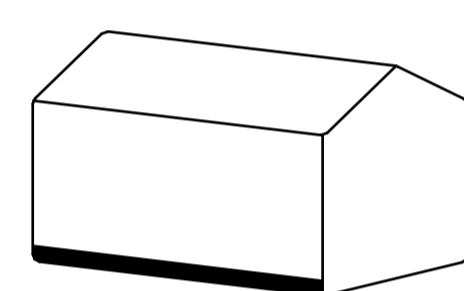
# MODEL P

## STUDIO

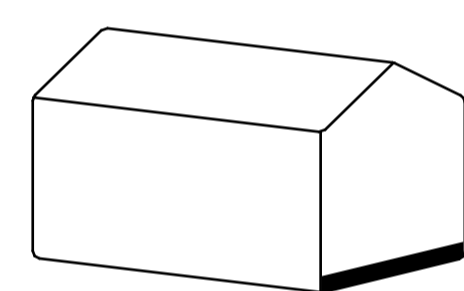
TRAILER TYPE  
PARK OR MOBILE

CAPACITY  
SLEEPS 2+1

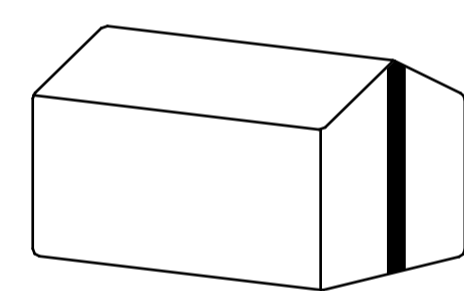
SIZE  
L 5.5M X W 2.5M, H 3.5M, AREA 13.75M2



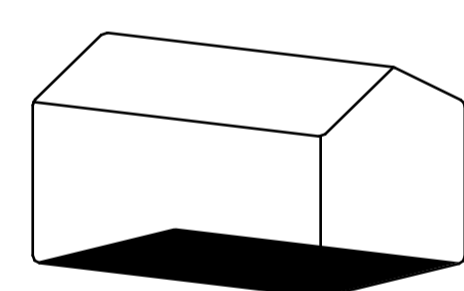
L 5.5M



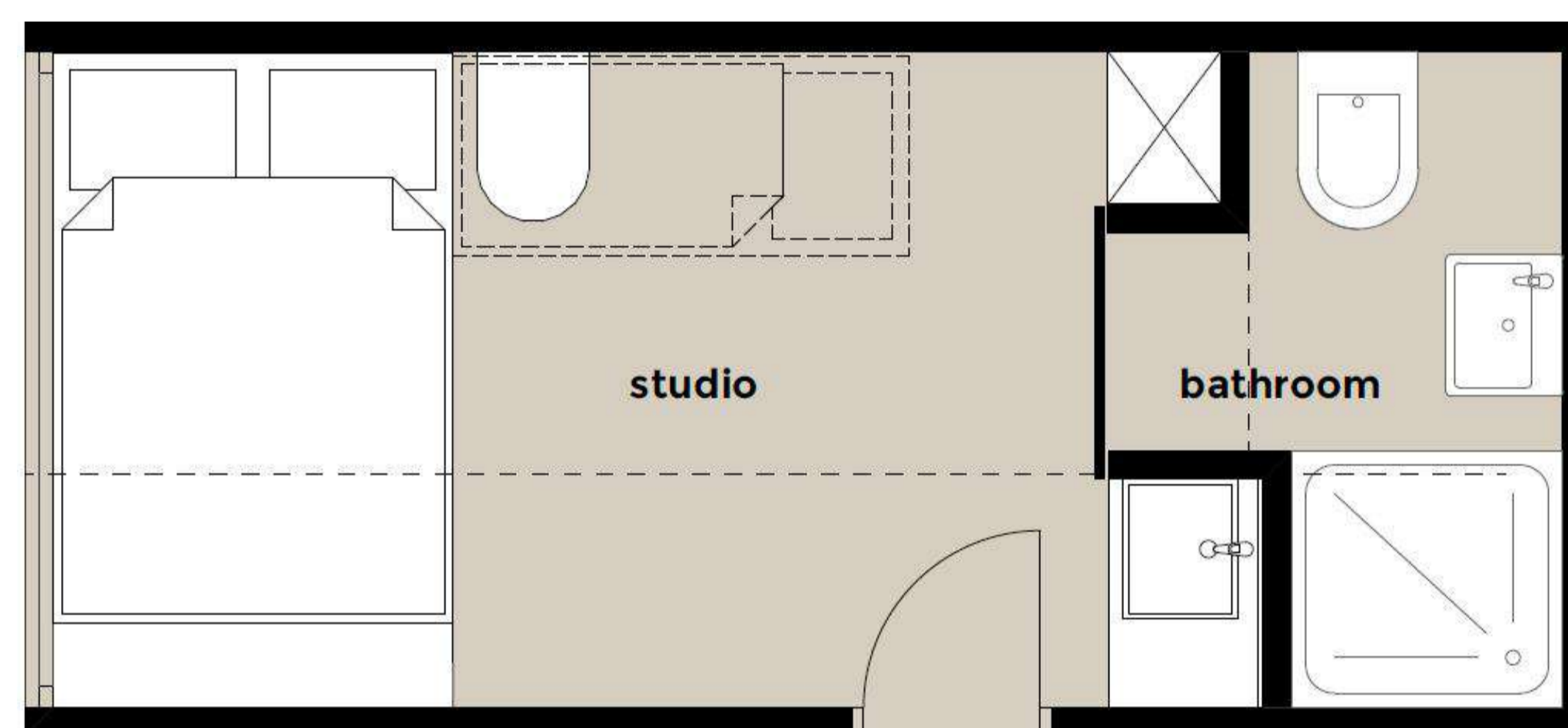
W 2.5M



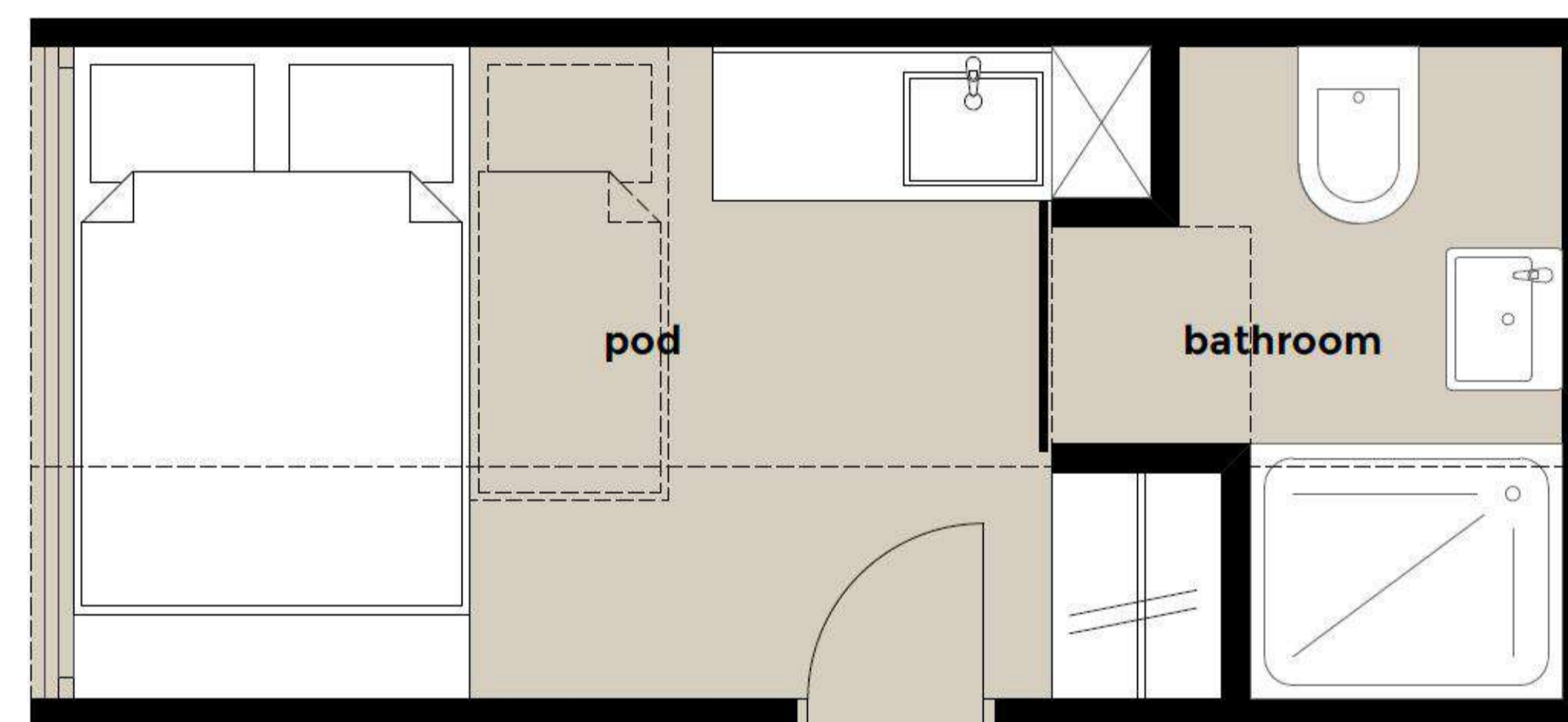
H 3.5M



13.75M2



STUDIO 1



STUDIO 2

### finish level: **BASIC**

- fully finished exterior
- + interior walls/ceiling - untreated plywood
- + poplar plywood as base for flooring
- + plumbing installation
- + electrical installation
- + rubber insulation in floor/walls in bathroom

### finish level: **FINISHED**

- all from BASIC and
- + fully finished bathroom
- + flooring
- + oil treatment on walls and ceiling
- + switches and sockets
- + lighting
- + electrical boiler
- + interior doors

### finish level: **FURNISHED**

- all from FINISHED and:
- + furniture as per project
- + sink and faucet in kitchen

price in Euro VAT excl. **35 885,-**  
price in Euro VAT incl. 43 420,85

price in Euro VAT excl. **38 460,-**  
price in Euro VAT incl. 46 536,60

\*\*\* Discounts on multiple unit orders/above 3pcs./ are made

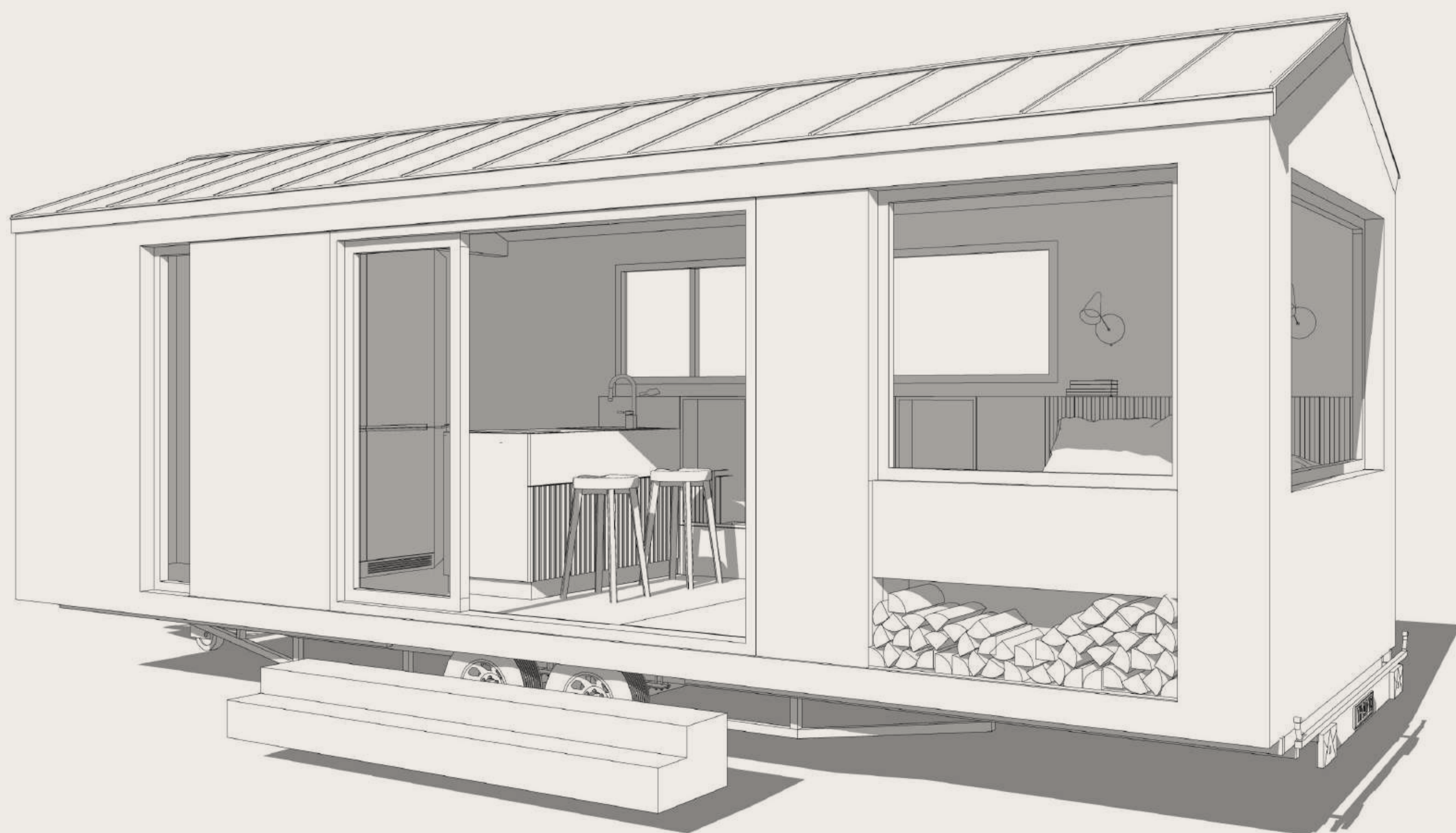
\*prices are excluding extras  
\*\* prices are excluding delivery and installation





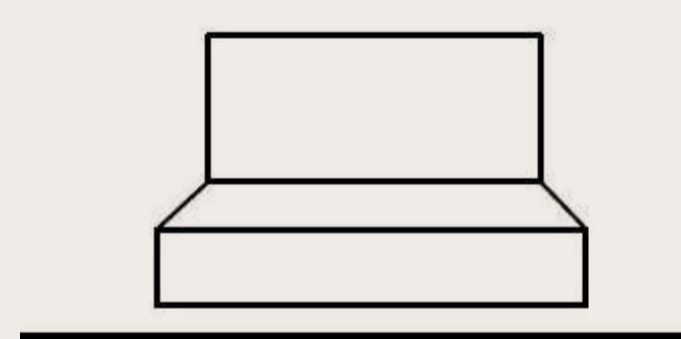


# Tiny Cabins by I Love Tiny



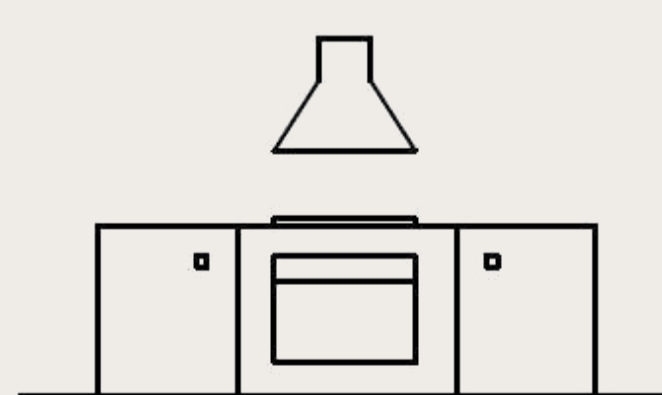
## The Perfect Weekend Home.

Our tiny houses are a unique way to live in balance with nature. They are zero-footprint, made from sustainably sourced timber and are available fully off-grid.



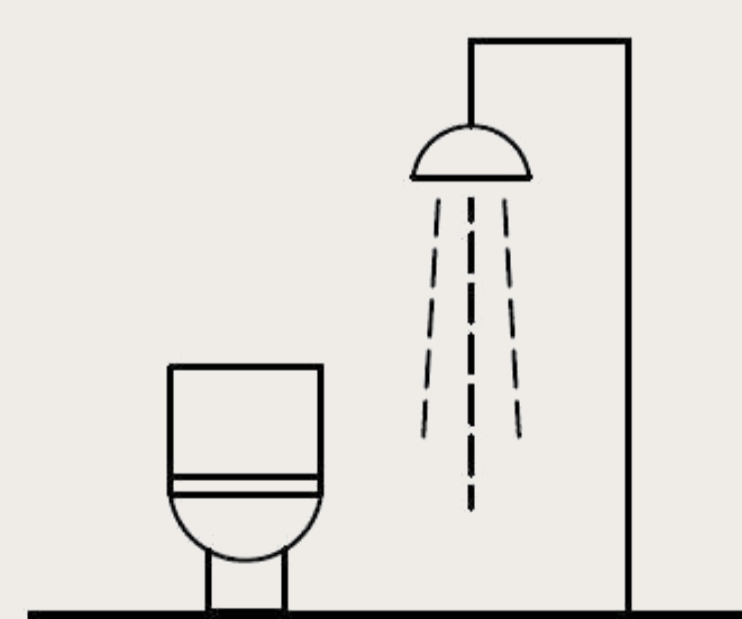
### Double Bed

Full size double bed with quality mattress provides comfort for your holiday recharging.



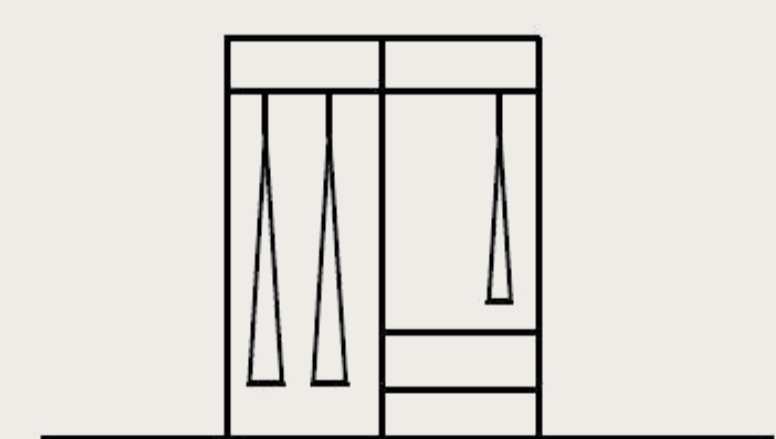
### Kitchen

Full-size kitchen with a sink, fridge-freezer, cooker and electrical sockets for other appliances.



### Bathing

Full-sized bathroom with a waterless toilet / Trobolo or Separett/ avoids the need of a sewage system.



### Storage +

Thoughtful storage space to allow for longer stays and compartment for off-grid gear and utilities.





TINY

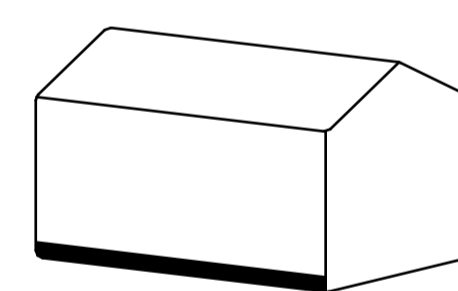
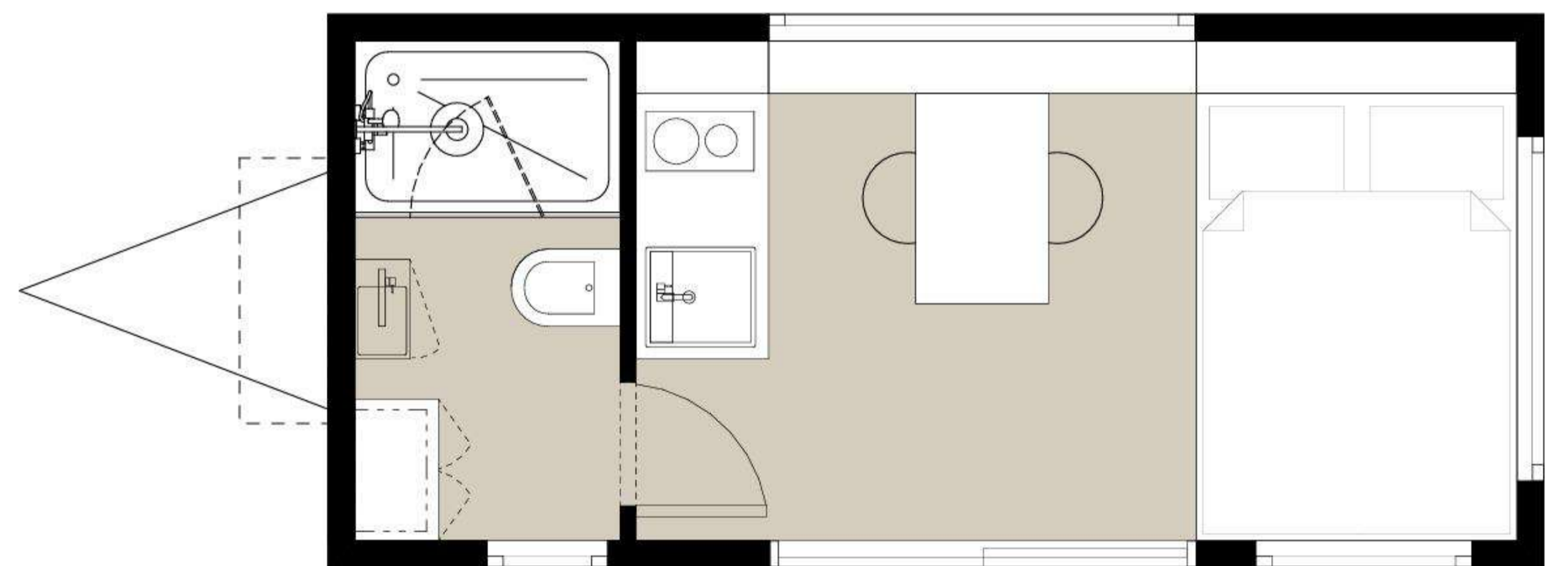
# MODEL K

## CABIN

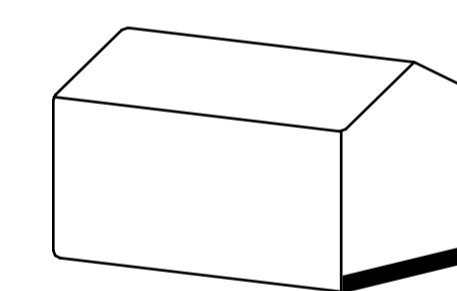
TRAILER TYPE  
PARK OR MOBILE

CAPACITY  
SLEEPS 2

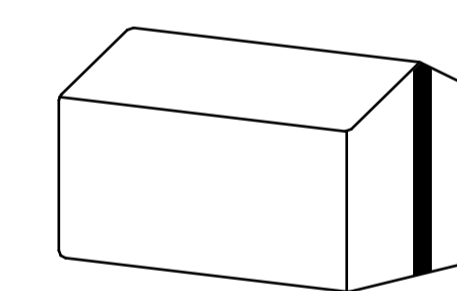
SIZE  
L 5.5M X W 2.5M, H 3.5M, AREA 13.75M<sup>2</sup>



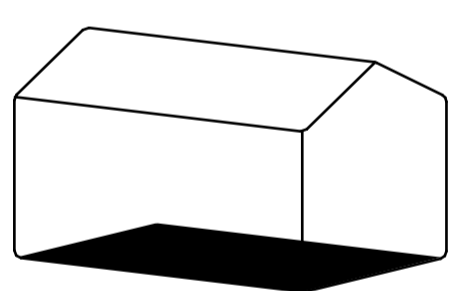
L 5.5M



W 2.5M



H 3.5M



13.75M<sup>2</sup>

### finish level: **BASIC**

- fully finished exterior
- + interior walls/ceiling - untreated plywood
- + poplar plywood as base for flooring
- + plumbing installation
- + electrical installation
- + rubber insulation in floor/walls in bathroom

### finish level: **FINISHED**

- all from BASIC and
- + fully finished bathroom
- + flooring
- + oil treatment on walls and ceiling
- + switches and sockets
- + lighting
- + electrical boiler
- + interior doors

### finish level: **FURNISHED**

- all from FINISHED and:
- + furniture as per project
- + sink and faucet in kitchen

price in Euro VAT excl.	<b>41 730,-</b>
price in Euro VAT incl.	50 493,30

price in Euro VAT excl.	<b>46 445,-</b>
price in Euro VAT incl.	56 198,45

\*\*\* Discounts on multiple unit orders/above 3pcs./ are made

\* prices are excluding extras  
\*\* prices are excluding delivery and installation













TINY

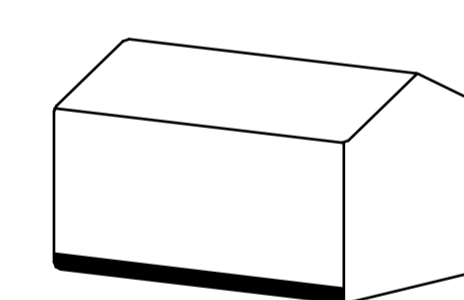
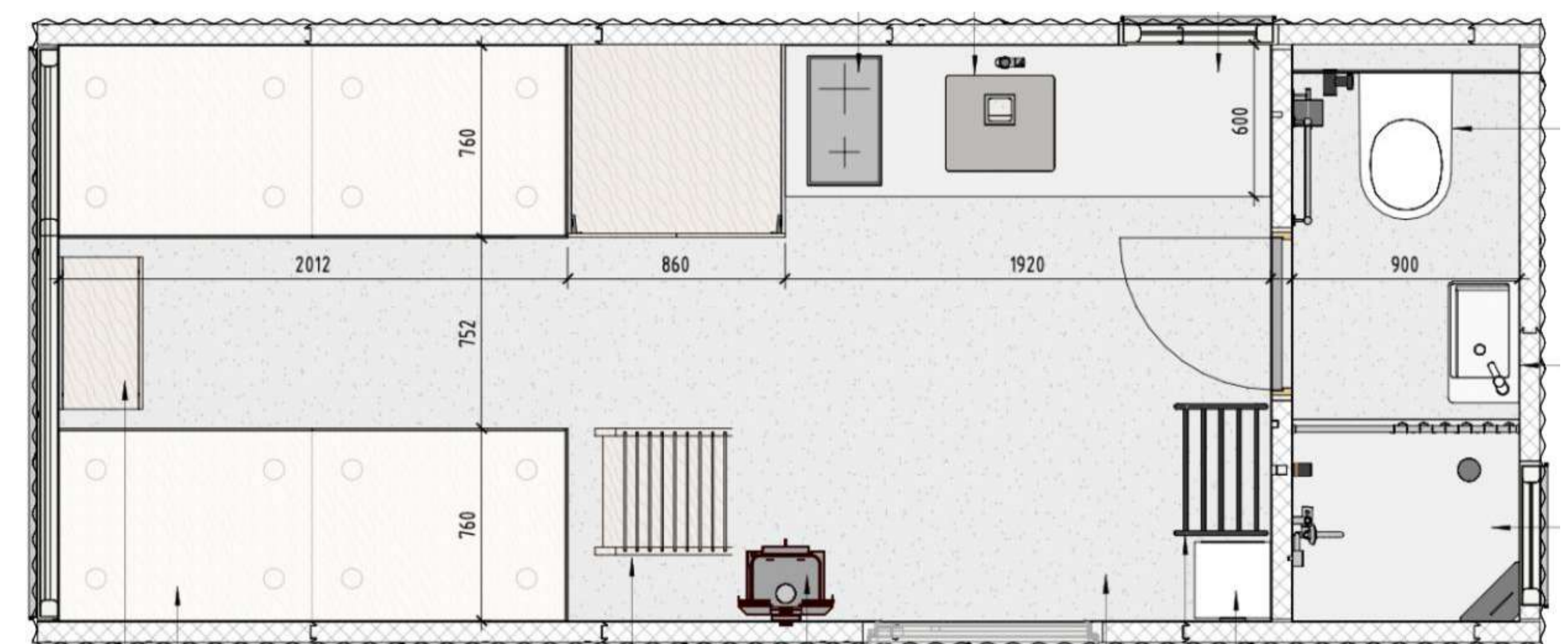
# MODEL S

## CABIN

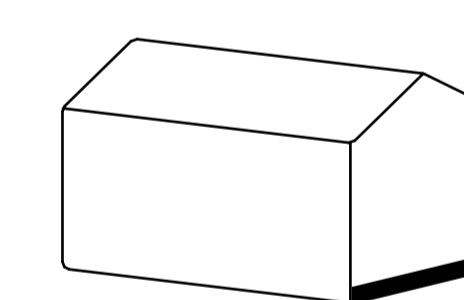
TRAILER TYPE  
PARK OR MOBILE

CAPACITY  
SLEEPS 2 + 2

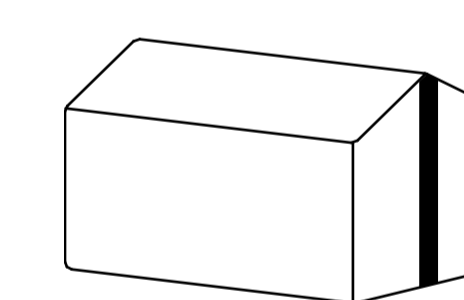
SIZE  
L 6.0M X W 2.5M, H 3.0M, AREA 15M2



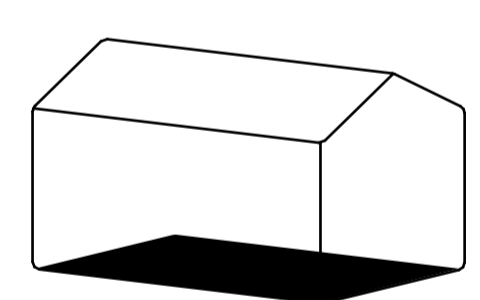
L 6.0M



W 2.5M



H 3.0M



15M2

### finish level: **BASIC**

- fully finished exterior
- + interior walls/ceiling - untreated plywood
- + poplar plywood as base for flooring
- + plumbing installation
- + electrical installation
- + rubber insulation in floor/walls in bathroom

### finish level: **FINISHED**

- all from BASIC and
- + fully finished bathroom
- + flooring
- + oil treatment on walls and ceiling
- + switches and sockets
- + lighting
- + electrical boiler
- + interior doors

### finish level: **FURNISHED**

- all from FINISHED and:
- + furniture as per project
- + sink and faucet in kitchen

price in Euro VAT excl.	<b>47 315,-</b>
price in Euro VAT incl.	57 251,15

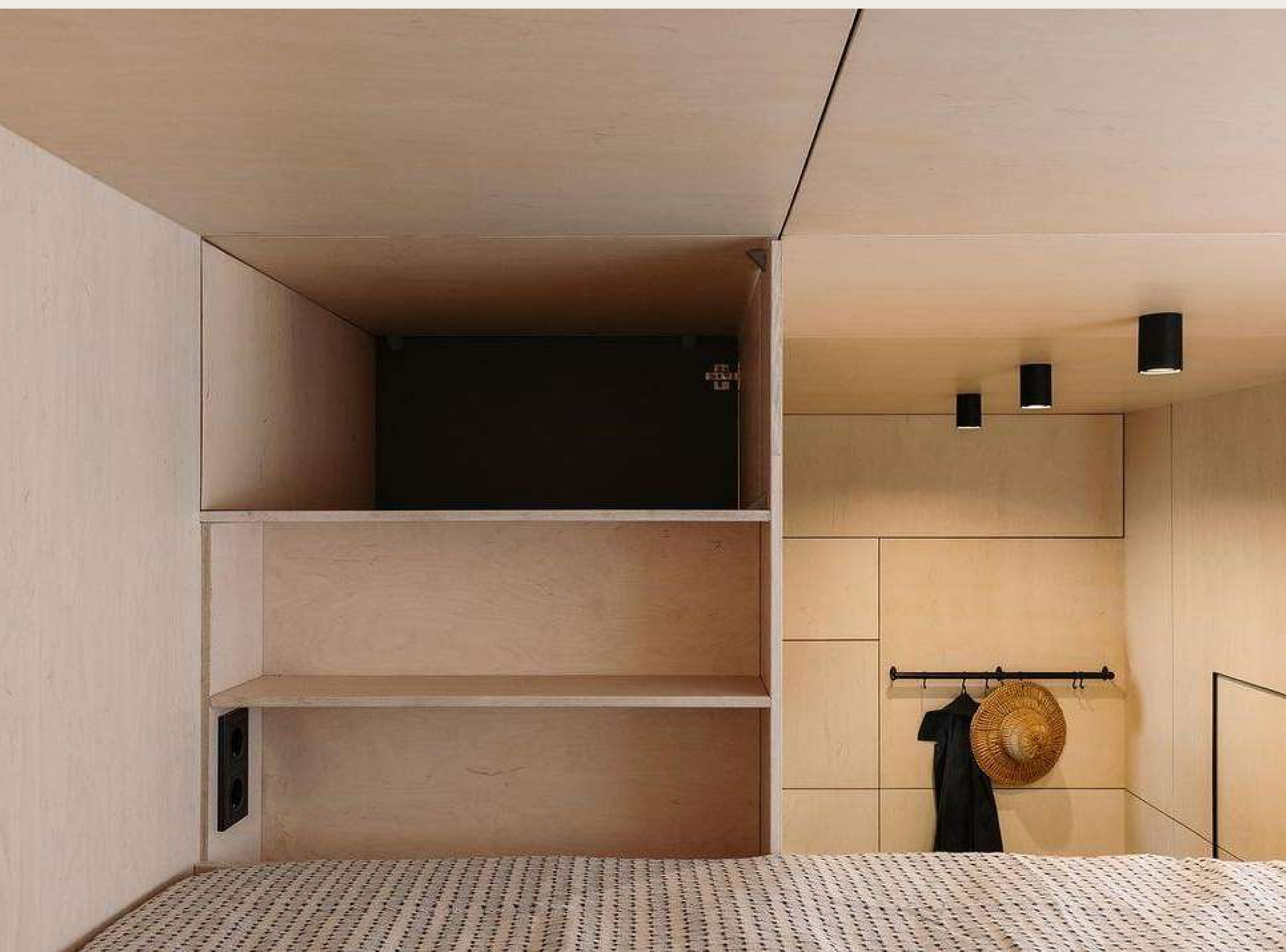
\*\*\* Discounts on multiple unit orders/above 3pcs./ are made

\* prices are excluding extras  
\*\* prices are excluding delivery and installation













TINY

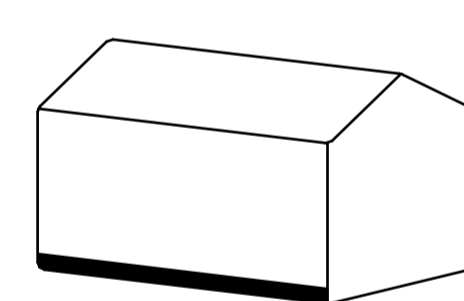
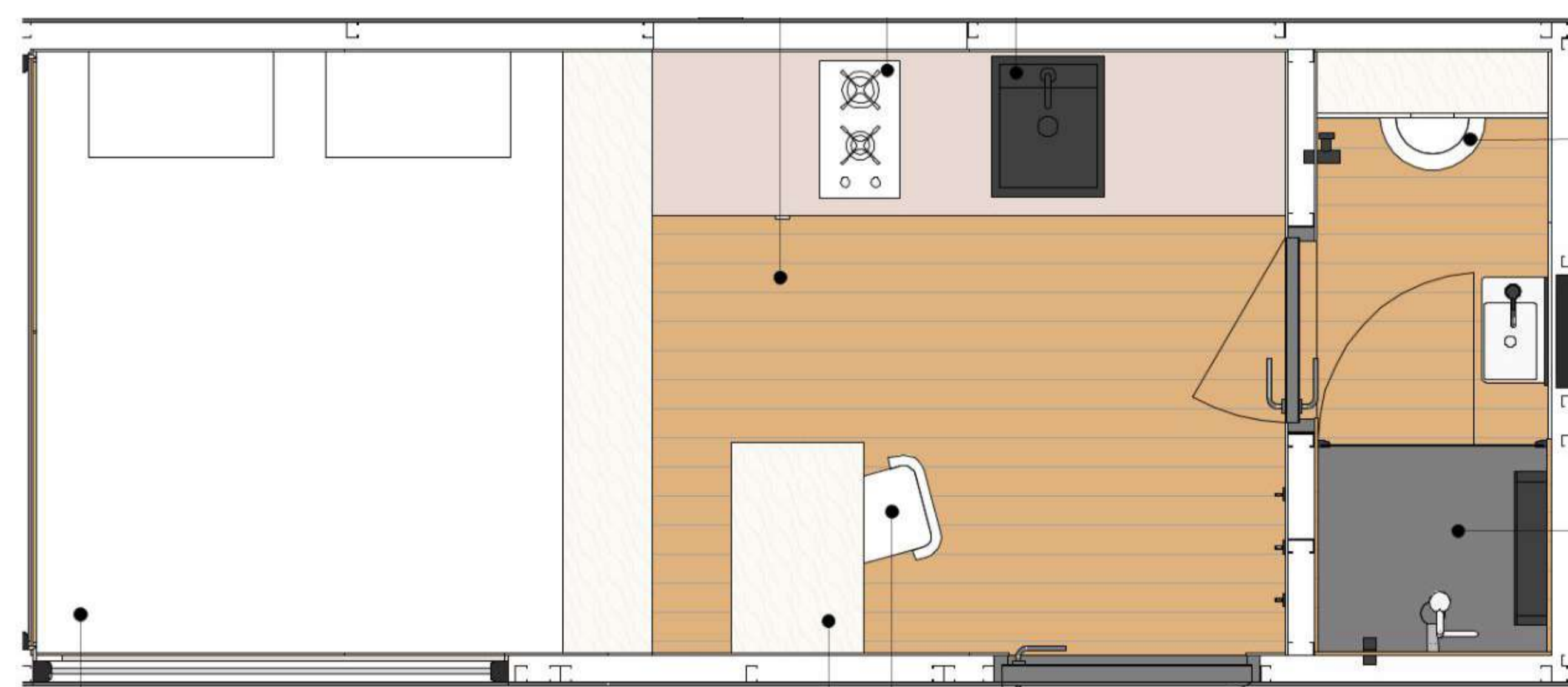
# MODEL R

## CABIN

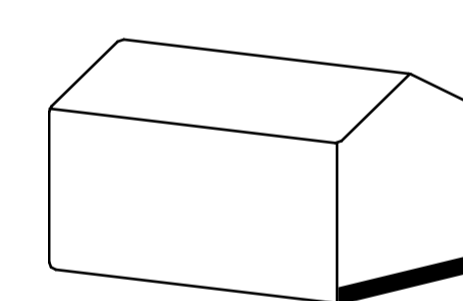
TRAILER TYPE  
PARK OR MOBILE

CAPACITY  
SLEEPS 2

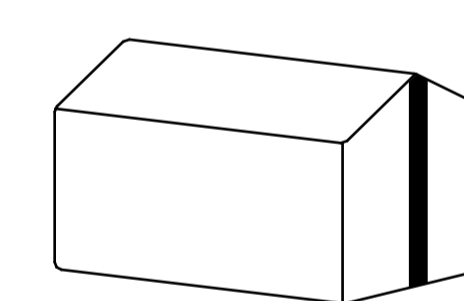
SIZE  
L 6.0M X W 2.5M, H 3.0M, AREA 15M2



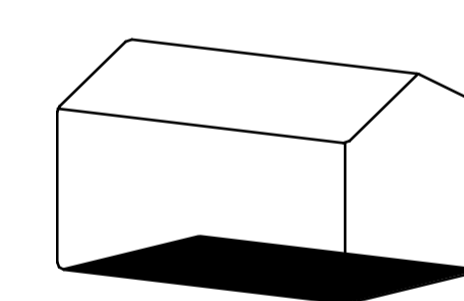
L 6.0M



W 2.5M



H 3.0M



15M2

### finish level: **BASIC**

- fully finished exterior
- + interior walls/ceiling - untreated plywood
- + poplar plywood as base for flooring
- + plumbing installation
- + electrical installation
- + rubber insulation in floor/walls in bathroom

### finish level: **FINISHED**

- all from BASIC and
- + fully finished bathroom
- + flooring
- + oil treatment on walls and ceiling
- + switches and sockets
- + lighting
- + electrical boiler
- + interior doors

### finish level: **FURNISHED**

- all from FINISHED and:
- + furniture as per project
- + sink and faucet in kitchen

price in Euro VAT excl.	<b>47 315,-</b>
price in Euro VAT incl.	57 251,15

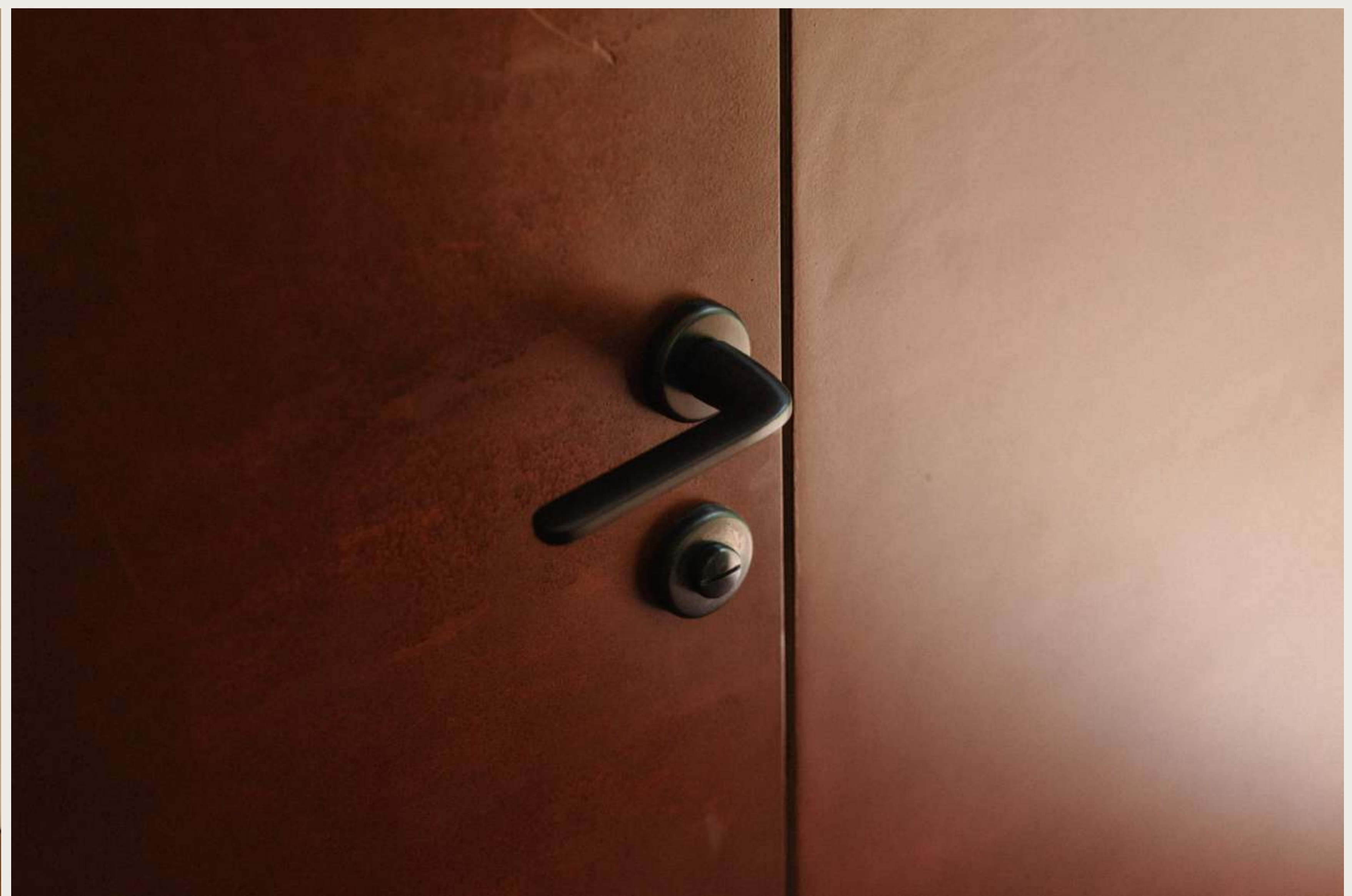
\*\*\* Discounts on multiple unit orders/above 3pcs./ are made

\* prices are excluding extras  
\*\* prices are excluding delivery and installation











TINY



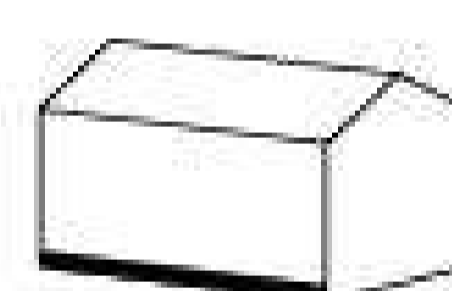
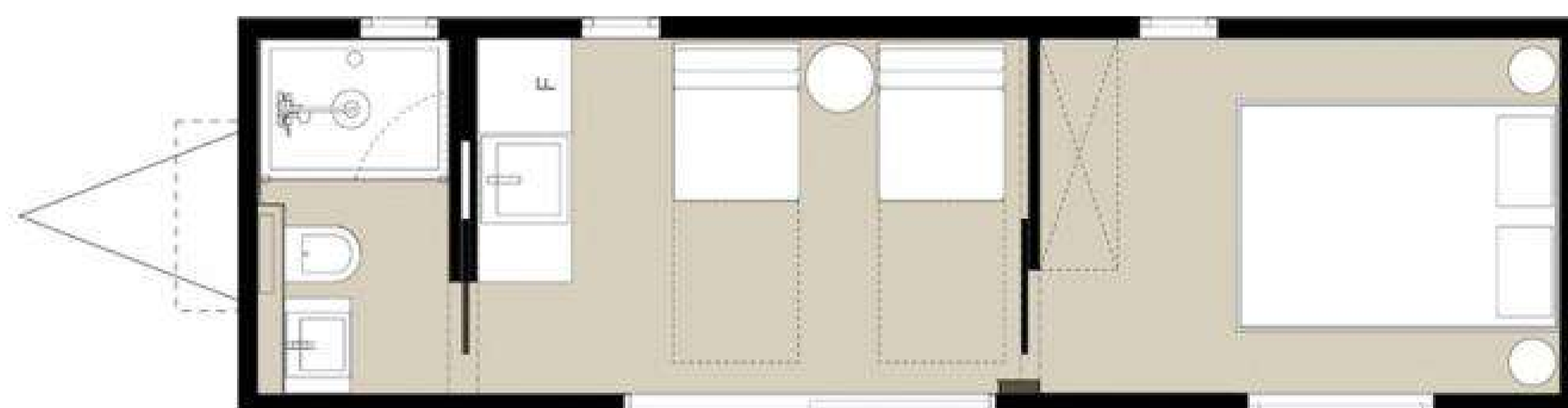
# MODEL M

TINY HOUSE

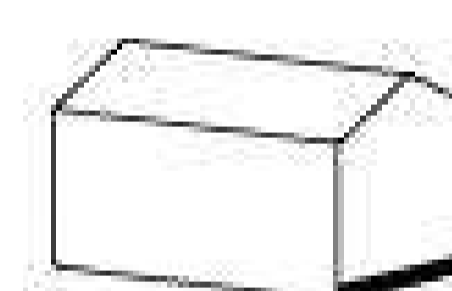
TRAILER TYPE  
PARK OR MOBILE

CAPACITY  
SLEEPS 2 + 2

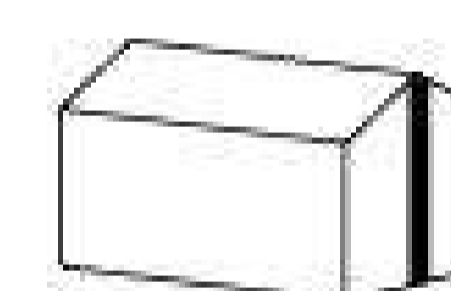
SIZE  
L 8.5M X W 2.5M, H 3.5M, AREA 21.2M2



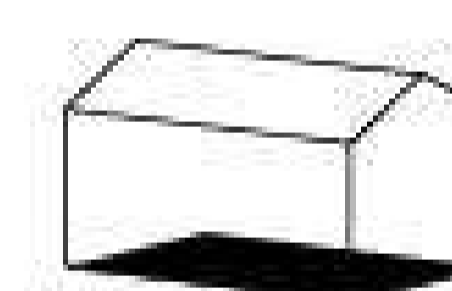
L 8.5M



W 2.5M



H 3.5M



21.2M2

### finish level: **BASIC**

- fully finished exterior
- + interior walls/ceiling - untreated plywood
- + poplar plywood as base for flooring
- + plumbing installation
- + electrical installation
- + rubber insulation in floor/walls in bathroom

### finish level: **FINISHED**

- all from BASIC and
- + fully finished bathroom
- + flooring
- + oil treatment on walls and ceiling
- + switches and sockets
- + lighting
- + electrical boiler
- + interior doors

### finish level: **FURNISHED**

- all from FINISHED and:
- + furniture as per project
- + sink and faucet in kitchen

price in Euro VAT excl.	<b>47 385,-</b>
price in Euro VAT incl.	57 335,85

price in Euro VAT excl.	<b>51 265,-</b>
price in Euro VAT incl.	62 030,65

\*\*\* Discounts on multiple unit orders/above 3pcs./ are made

\* prices are excluding extras

\*\* prices are excluding delivery and installation



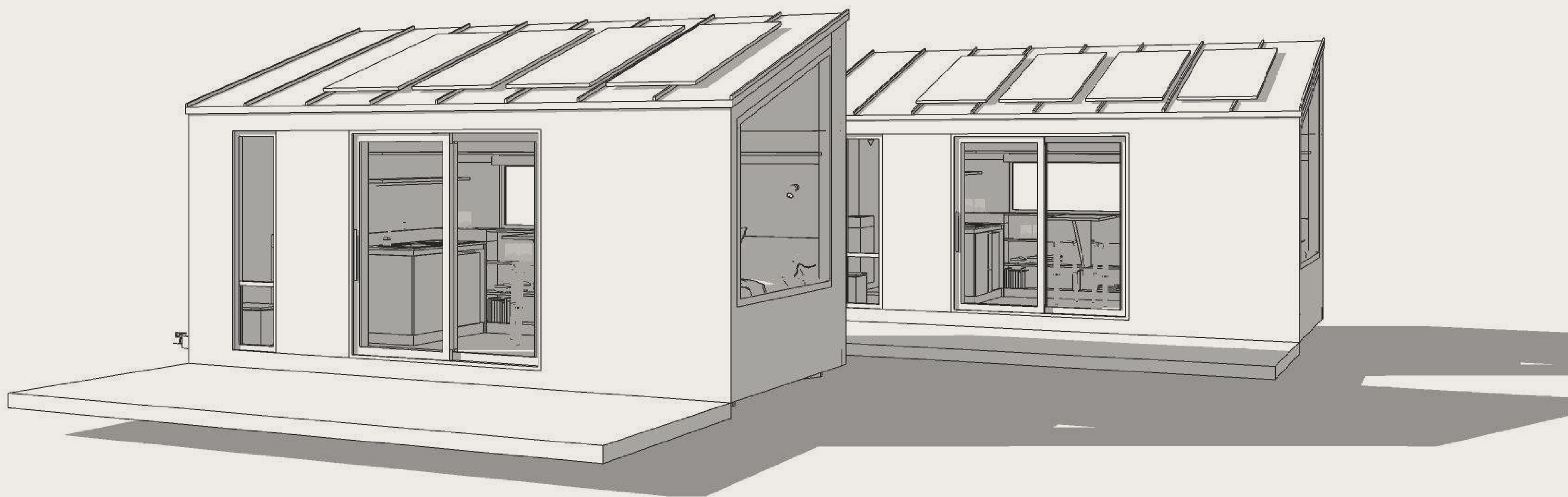








# Custom-made Design Houses by I Love Tiny



## We design tailor-made tinies

We have a dedicated team of architect and engineers that could develop your ideas and turn them into coherent tiny houses project. This service is suitable for businesses that want to distinct themselves and own a unique design to rent or sell to their clients.

- + Concept architectural design
- + Camping/ glamping master planning solutions
- + Structural technical drawings

- + Electrical plan
- + Plumbing and HVAC
- + Detailed furniture drawings



Spain, 2024



Italy, 2023



# Overview of our Cabins

	Sleeps	Length, m	Width, m	Height, m	Square, m2	Price (ex. VAT) in Euro
Model P Essential <small>(without kitchen and bathroom)</small>	2+1	4,5	2,5	3,5	11,25	<b>27 475,-</b>
Model P Studio	2+1	5,5	2,5	3,5	13,75	<b>38 460,-</b>
Model K	2	5,5	2,5	3,5	13,75	<b>46 445,-</b>
Model R	2	6	2,5	3	15	<b>47 315,-</b>
Model S	4	6	2,5	3	15	<b>47 315,-</b>
Model M	4	8,5	2,5	3,5	21,2	<b>51 265,-</b>



# Financing options

## 1. Direct purchase

**Best for:** Individuals, businesses, and investors looking for full ownership.

With a direct purchase, you buy the tiny cabin outright and gain full ownership immediately. This option provides complete flexibility in how you use and manage your cabin, whether for personal retreat, rental purposes, or business operations.

## 2. Financial lease

**Best for:** Individuals and sole entrepreneurs in the Netherlands who want to spread the cost of ownership over time.

A financial lease allows you to pay for the tiny cabin in **fixed monthly installments over a set period**. Once all payments are completed, ownership of the cabin transfers to you. This is ideal for those who prefer not to make a large upfront payment but still want to own their cabin in the long term.

## 3. Operational lease

**Best for:** Businesses registered for at least 2 years in the Netherlands and Germany.

An operational lease is a rental-based financing model where the business pays a **monthly fee to use the tiny cabin without taking ownership**. This is similar to leasing a car or office equipment. At the end of the lease term, the business can either return the cabin, extend the lease, or negotiate a purchase.

## 4. Revenue-based model (TINICAMPS partnership plan)

**Best for:** Clients who want to operate their tiny cabin(s) as a rental but prefer lower upfront costs and marketing support..

With this option, the client pays **80% of the total cost upfront**, and the remaining **20% is deducted from future rental turnover** when joining our Tincamps booking platform. Tincamps will handle the sales, marketing, and promotion of the tiny cabin location, ensuring visibility and bookings through our established network.



# Cabins

- We confidently assert that our product is one of the best on the market, crafted from **high-quality, sustainable** materials.
- Our cabins can be **fully autonomous**, ideal for properties with limited utility connections.
- Each cabin is **fully equipped** with a double bed, kitchen, and a complete bathroom, offering the comfort and amenities of a high-end hotel room.
- We are **ready to customize** the project to meet your specific requirements, including facade materials, furniture, and engineering equipment.
- Our cabins are designed for easy setup and mobility, requiring **no special foundations** or **building permits** in most locations.
- Our cabins are **fully mobile** and can be relocated without costly transport equipment.

See our production site:



Video link:  
<https://youtu.be/Sxzz-8JH1Hg>



# Our promise to You

## Support

We offer **dedicated one-to-one after-sales support**. As we are fully aware that switching to tiny cabins needs some preparation and adaptation, we are open to one-to-one communication and support and will always be one phone call or email away. We aim to be as supportive as we can and address your concerns or answer any questions you may have.

## Warranty

### **25 years on:**

- Steel structural skeleton of the cabin (models R and S)

### **10 years on:**

- External cladding, roof, park trailer, windows and doors, flooring and walls, installations

### **10 years on:**

- Interior furniture

Note: Warranty does not refer to varnish scratches, improper handling and poor maintenance.

## Delivery

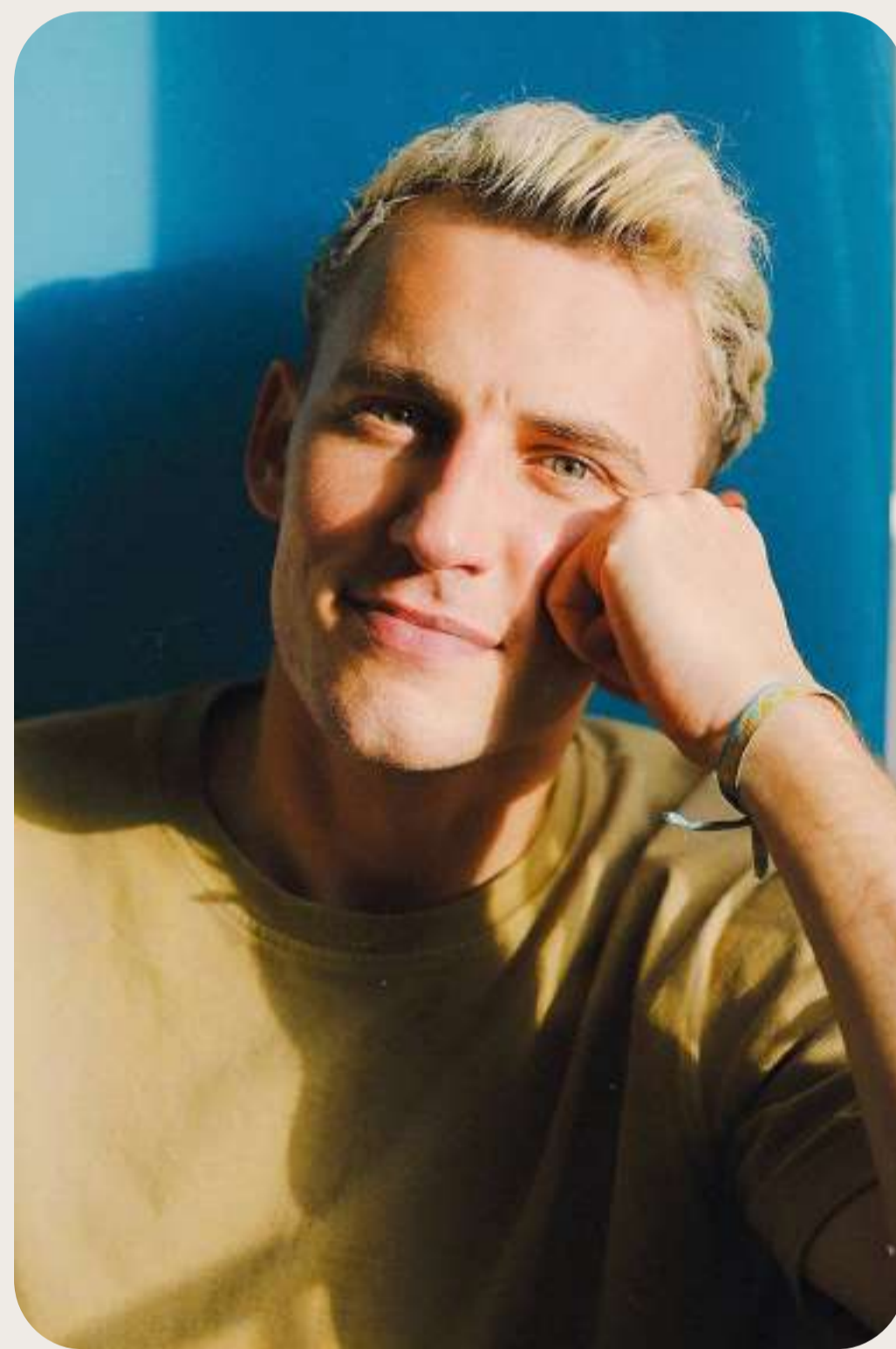
The production time is **10-12 weeks** after technical agreement is signed.



# About Us

“We are a young **Dutch** tiny cabin company with production sites in **Eastern Europe**. Together with our partners, we create extraordinary holiday destinations in unique natural locations.

As a young and driven company, we go beyond just tiny cabins - we develop complete projects, including *architecture, design, construction, sales and marketing*. A true **one-stop shop** for anyone who wants to realize an unforgettable, eco-conscious destination.”



Yaro

co-founder of I Love Tiny | nature inclusive cabins

yaro@ilovetiny.nl

+31 6 1405 1868



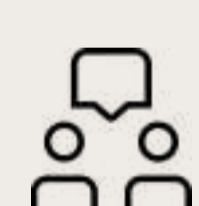


## Are you excited?

LET US HELP YOU ON YOUR TINY JOURNEY



E-mail us :  
[info@ilovetiny.nl](mailto:info@ilovetiny.nl)



Book an on-line meeting via:  
[Google Meets with Yaro](#)

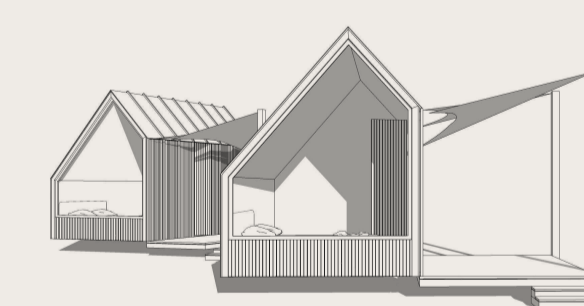
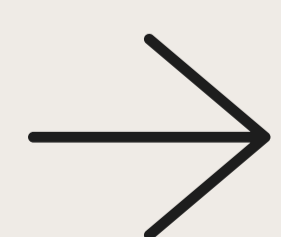


Call us :  
[+31 6 2378 7365](tel:+31623787365)



See more at:  
[www.ilovetiny.nl](http://www.ilovetiny.nl)

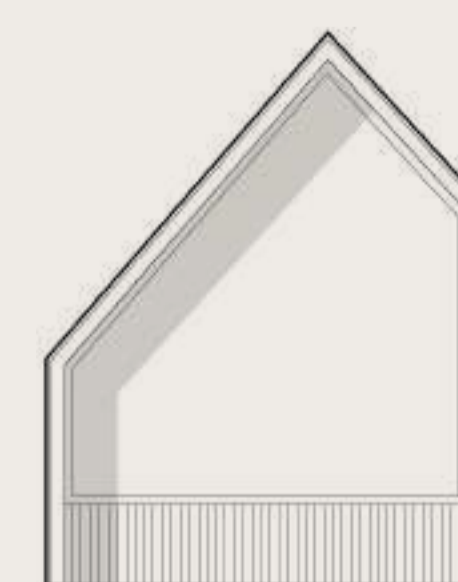
Check for more info



Book your stay in  
one of our tiny  
cabins via:

**PARCEL TINY  
HOUSE**

**Showroom in the  
Netherlands**



(Demopark Almere)  
Daniel  
Goedkoopstraat 30,  
1349 GJ Almere  
The Netherlands