



AFFORDABLE
ARCHITECTURAL
DESIGN SERVICES



Affordable Architectural Marketing Brochure

February 2025

About Us

Affordable Architectural Design Services formed early 2024 with an aim of providing Architectural Drawings at an affordable and competitive rate compared to our competition. Based in Wolverhampton. We predominantly work remote, so location of projects are flexible.

Affordable Architectural provides a range of services relating to most aspects of residential related architectural needs, including, but not exclusively:

Residential Extensions

Consultation & Advice

Garden Rooms / Offices

Planning Applications

Residential Conversions

3D Scanning and Photogrammetry

Residential New build properties

Matterport Scanning

Minor Commercial works

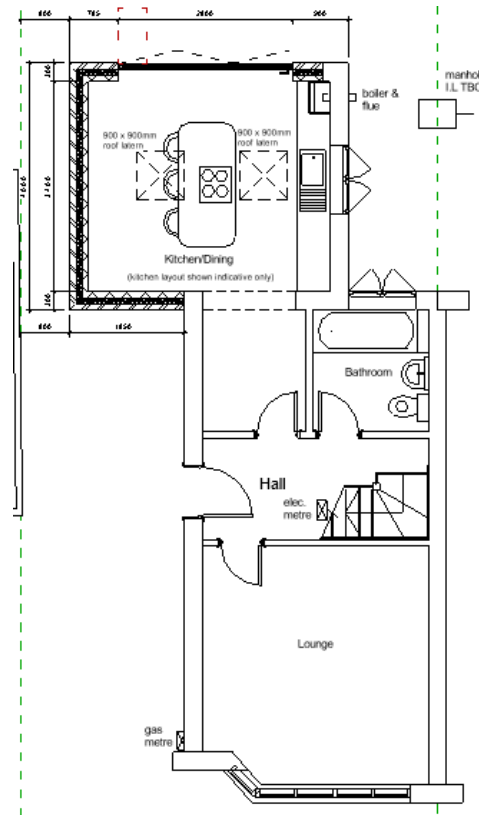
Project Feasibility

What Clients Say

- Really helpful and professional
- Clear and straightforward communication
- Excellent work ethic, no unnecessary delays
- Simple, direct process—no hassle
- Provided valuable guidance even when no work was carried out
- Went above and beyond when other options fell short

Residential Extensions

We provide detailed architectural plans for residential extensions, ensuring compliance with planning regulations. These approved projects showcase our expertise in creating functional and aesthetically pleasing home expansions.



FRONT PROPOSED ELEVATION 1:50

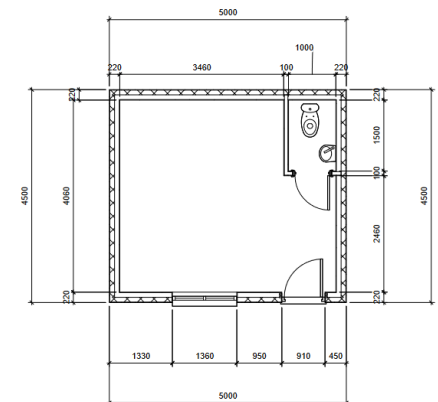
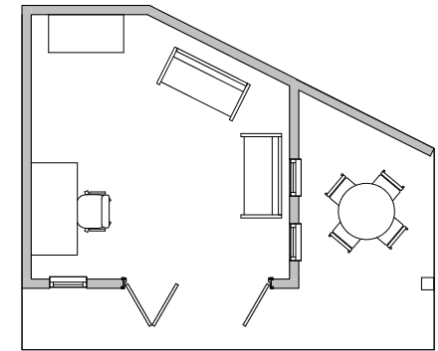


REAR PROPOSED ELEVATION 1:50



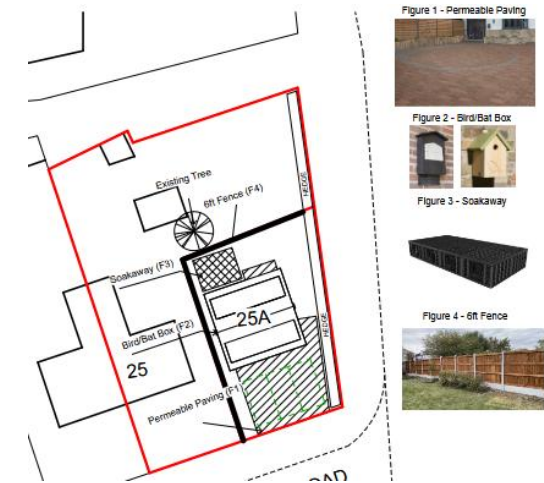
Garden Rooms

Bespoke garden rooms designed for flexible use, including home offices, gyms, and leisure spaces. Tailored to complement the outdoor environment while providing functional indoor comfort.

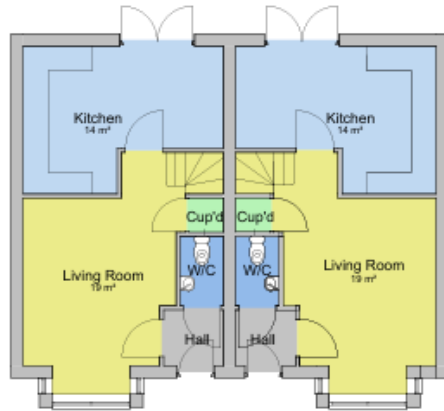


Residential New Builds

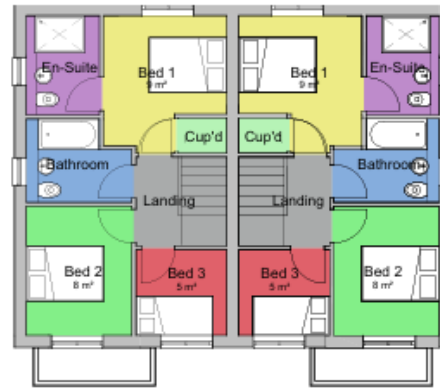
Bespoke residential new builds designed to suit individual requirements, whether a single home or multiple dwellings. Thoughtfully crafted to maximise space, efficiency, and sustainability while ensuring full compliance with planning and building regulations.



Pre-Planning Drawings



Ground Floor - 1:100



First Floor - 1:100



FRONT - 1:100

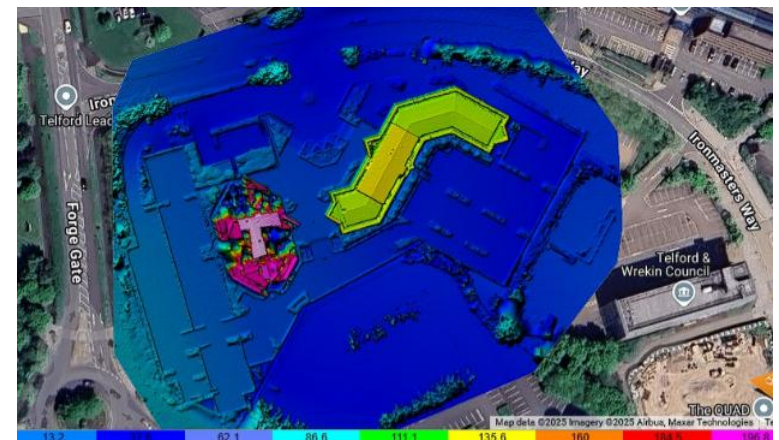


REAR - 1:100



Photogrammetry & Drone Scanning

Offering cost-effective photogrammetry and drone scanning services for site mapping, 3D modelling, terrain analysis, and condition reporting. Ideal for capturing existing structures, generating conceptual models, creating topographical maps, and documenting site conditions with precision. Perfect for early-stage planning, visualization, and informed decision-making.

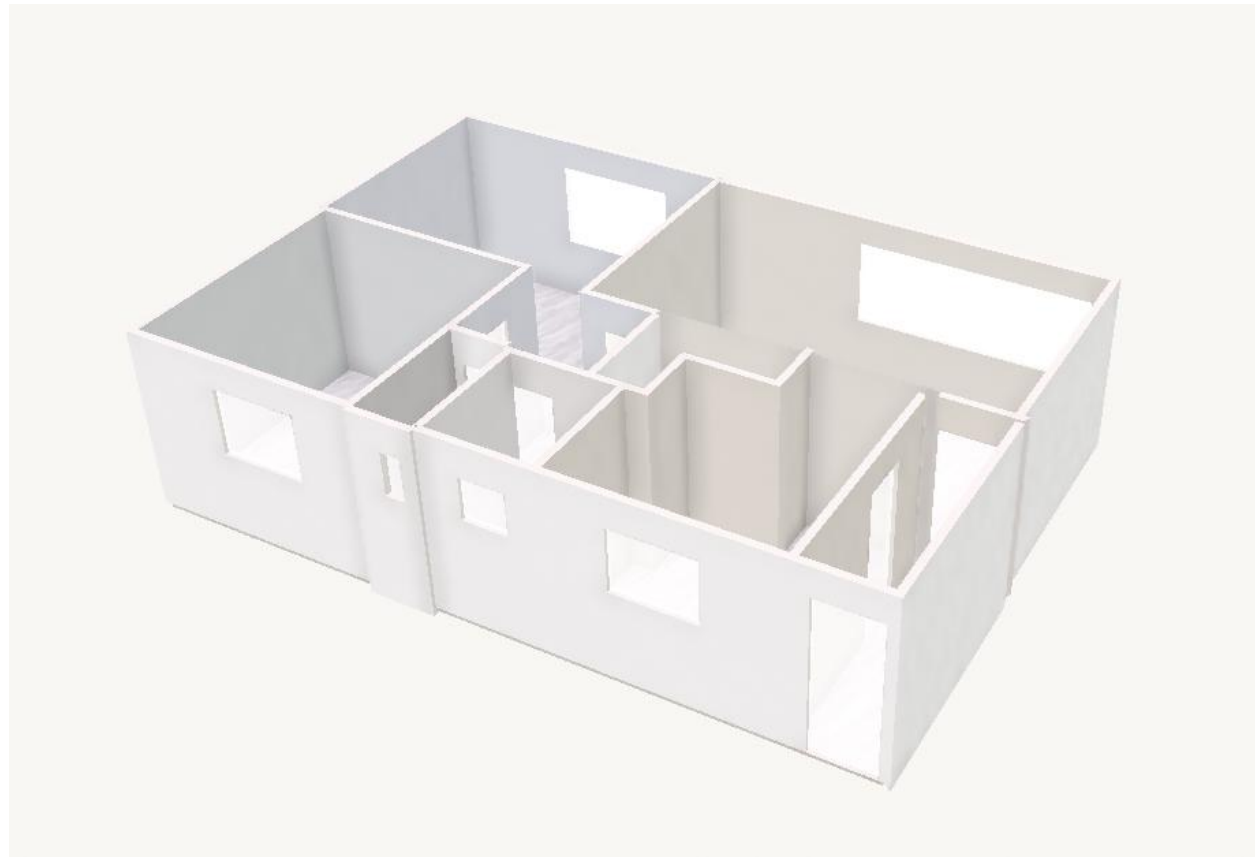




Matterport

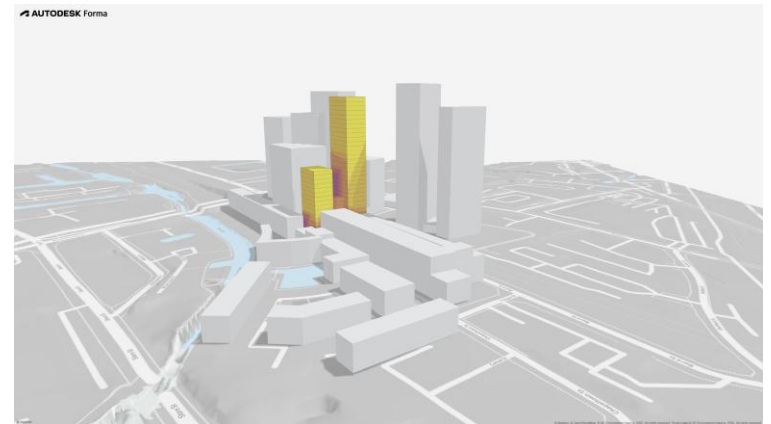
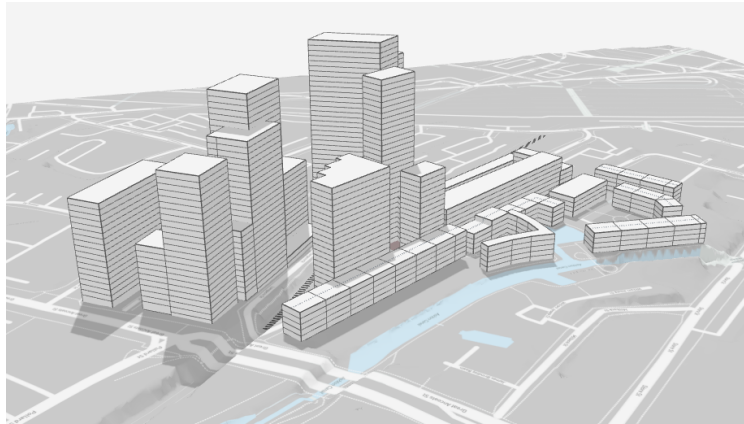
Lidar & Matterport Scanning

Offering Matterport and LiDAR scanning services for creating 3D models, virtual tours, and spatial mapping. Great for capturing interiors, exteriors, and site conditions with practical accuracy. Ideal for real estate, design planning, condition reporting, and visualizations. Bringing spaces to life with accessible, modern technology!



Concept & Analysis

Utilising Autodesk Forma for rapid concept development, daylight analysis, and microclimate studies. Our services provide data-driven insights and visuals to optimize your designs for sustainability, efficiency, and site responsiveness. Perfect for early-stage planning and informed decision-making.



Future Developments

Land & Property Development

Affordable Architectural is actively seeking land and property development opportunities. We aim to acquire, develop, and add value to land and properties through strategic design and planning. Our focus is on delivering high-quality developments that maximize potential and create long-term value.

We are also interested in working with investors and landowners who are looking to collaborate on development projects. If you have land for sale, a potential project, or are interested in investing, please get in touch.

Property Management

Affordable Architectural is currently working towards offering professional property management services. Our goal is to provide efficient and reliable management solutions for residential and commercial properties, ensuring optimal performance and value for property owners.

We are in the process of developing the necessary systems and infrastructure to deliver a comprehensive service, including tenant management, maintenance coordination, and financial oversight.

If you are a landlord, investor, or property owner interested in future property management solutions, we would love to hear from you. Stay connected as we expand into this sector.

Contact Us

Ready to start your project? We'd love to hear from you! Whether you have a question, need a quote, or want to discuss your architectural needs, Ryan is here to help.

Website: AffordableArchitectural.co.uk

Email: ryanskitt@affordablearchitectural.co.uk

WhatsApp: +44 7542 464465

