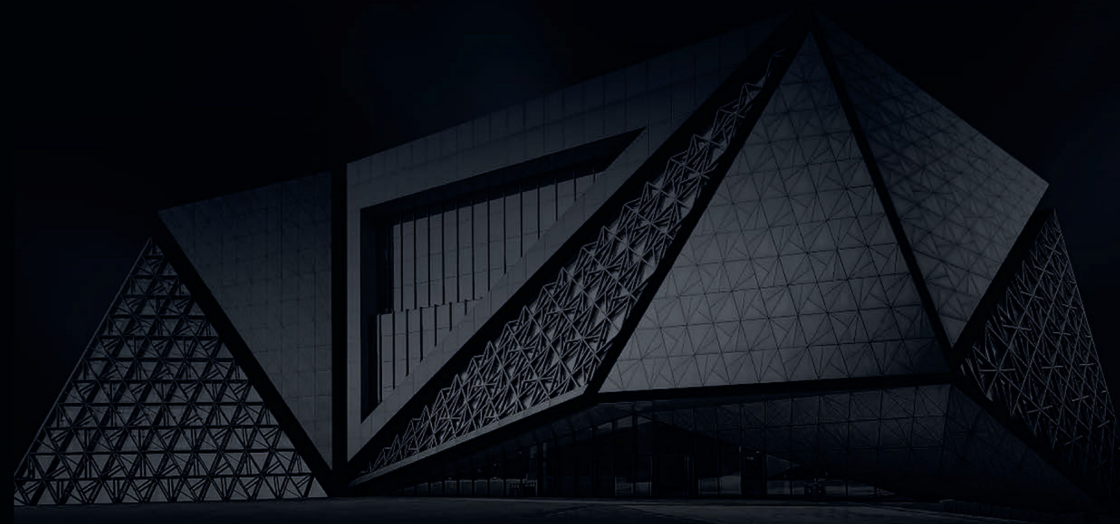


DOME & HOME
ENGINEERING SOLUTIONS



PANEL SOLUTIONS



Contents

COMPANY INTRODUCTION:	02
EQUIPMENT & PRODUCTION PROCEDURE	03
• Sheet metal production process	04
• Technical data sheet	05
• Spraying process	06
• The installation of aluminium panel	07
• Advantages of aluminium panel	08
ALUMINIUM PANEL CATEGORT	09
• .Aluminium perforated panel	10
• Aluminium facade panel	11
• 3D aluminium panel	15
• Aluminum expanded panel	17
• Indoor decor panel	18
• Aluminium Ceiling panel	20
COLOR CHOICES FOR ALUMINIUM PANEL	22



COMPANY PROFILE

Our company was established in 2010 in Foshan city, China, the fastest developing and dynamic economic country, and Foshan is the city of professional production base of metal in Pearl River Delta zoon. We are a professional comprehensive aluminum manufacturer. ALUMIDEAS, our panel brand, is specialzid in aluminum decorative facade, wall-cladding, perforated panel and screen, and aluminum ceiling etc. since 2010.

Scale of the factory: covers an area of 100,000 square meters, annual production capability is more than 1,200,000 square meters. With years of experience in designs and manufacture, we've obtained a lot about the ideas and key point to combine the aesthetic of designs together with the technical supports to meet the requirement of customers and the market. Offering One-Stop solution is our enterprise tenet.

All kinds of shapes, any colors, carvings, etc. can be skillfully combined and applied to the aluminum plate decoration. That's the charm of architecture: combination and collision of multiple elements.



EQUIPMENT & PRODUCTION PROCEDURE

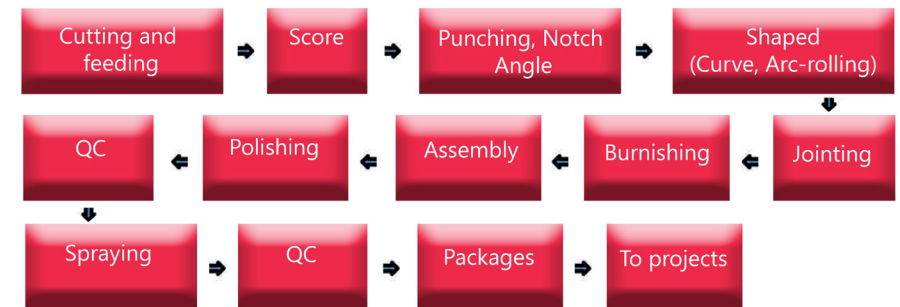
Alumideas specializes in facade panel, wall-cladding, perforated panel, screen, ceiling etc. As there are various demands in geometric and special shape and effect and colors, we introduced many leading-edge production lines.

For deep processing, we are equipped with high precision laser engraving machine, CNC carving machine, horizontal CNC slotting machine, CNC punching machine.

For surface treatment, we have fluorocarbon spraying lines, horizontal and vertical powder painting lines. JOTUN, PPG, AKZO, DNT, NIPPON are the famous powder brand suppliers we are cooperating with. Together with the leading-edge production lines, they bring us great confidence to provide exquisite products with reasonable prices to meet various demands from architects, designers, fabricators, builders, contractors. Alumideas has obtained ISO 9001:2015/ GB/T19001-2016 certification for production quality management system and CE, SGS qualified.



Sheet metal production process



Technical data sheet :

Aluminum Mechanical Properties

Aluminum Temper	Thickness	Proof Stress Mpa	Tensile Strength Mpa	Elongation%
3003-H24	1.5mm	200	210	3.7
1100-H18	1.5mm	170	110	2.8

Aluminum Chemical Composition

In percentage per weight %

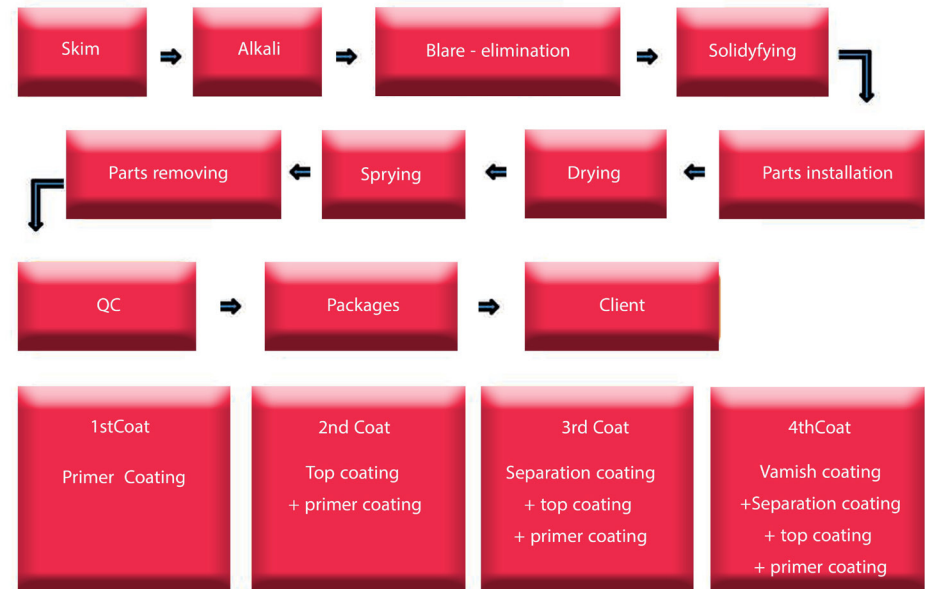
Alloy	Al	Si	Fe	Cu	Mn	Mg	Cr	Zn	Ti
3003	96.95	0.6	0.7	0.10	1.00	0.533	0.007	0.10	0.01
1100	99.17	0.11	0.484	0.08	0.05	-	-	0.10	-

Polyester Powder Coating Performance Properties

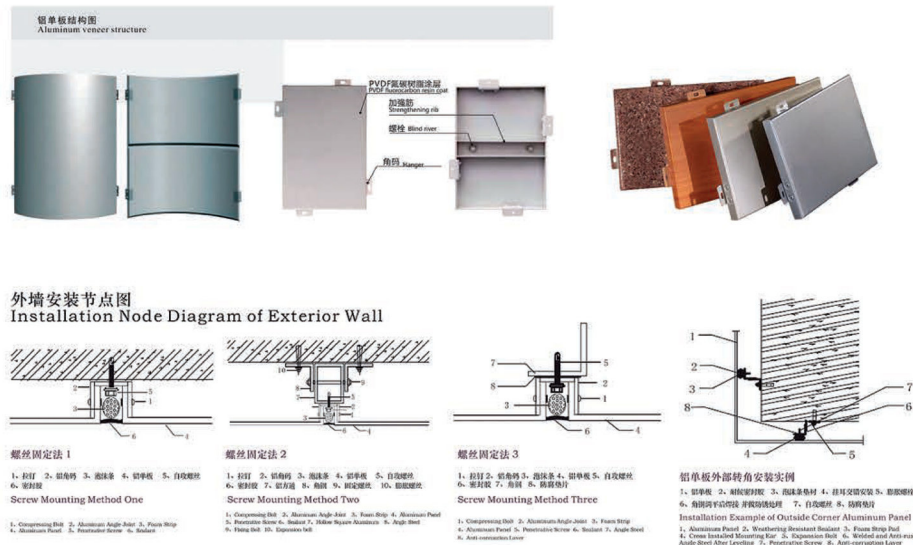
Item	Standard	Coating Requirement	Performance
Gloss	ISO2813	(L-G):+5(M-G):+7(H-G):+10	(L-G):+5(M-G):+7(H-G):+10
Coating Thickness	ISO2360	Average of five points are not less than 60 um	Average of five points are not less than 60 um
Adhesion	ISO2409	Grate to 0	Grate to 0
Erichsen cupping test	ISO1520	5mm	6 mm, no crack
Impact Test	ASTMD2794	2.5NM	2.5NM, no crack
Hardness Test	ISO2815	80 at least	Not less than H
Resistance to cracking on bending	ISO1519	5mm	φ 6mm, no crack
Mortar Resistance	ASTMC-207	The mortar must be easy to remove without leaving any	No visible change and no removal
Acid Resistance	AAMA605.2	Eroding within 0.5mm off lineation	No froth ,goffer or removal ,etc
Salt Spray Resistance	ISO9227	1000h	1000h, eroding within 2mm off lineation
Resistance to boiling water	AAMA605.2	1 hour	1 hour , no air bubble, goffer or removal vice ,etc
Accelerated Weathering Test	DIN53231 Suntest	1000h ,the loss of gloss must not be more than 50%	Good
Solvent Resistance	DIN50017	1000h	Good
Gloss	AAMA605.2		No air bubble , goffer or removal vice, etc
Color Test	ISO2813		$\Delta E^*_{ab} \leq 1.5$



Spraying process

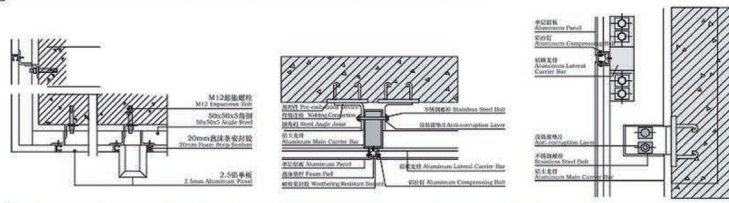


The installation of aluminium panel

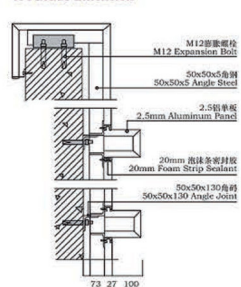


幕墙墙面转角大样图

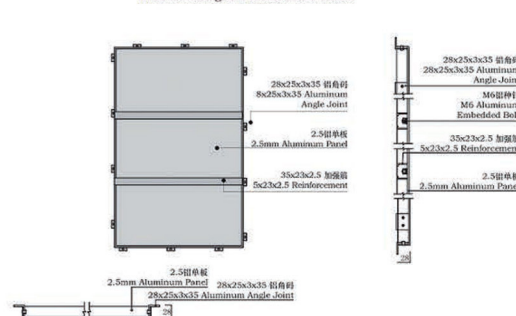
Brief Diagram of Panel Installation on Facade Outside Corner



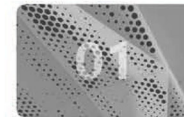
幕墙女儿墙剖面样图
Illustration of Cross Section Diagram
of Facade Extension



幕墙平面板块大样图
Brief Drawing of Facade Plain Panel



Advantages of aluminium panel



Light weight, good rigidity and high strength. 3mm thick aluminum veneer weighs 8kg per square, tensile strength 100-280N/mm²



Good weather resistance and corrosion resistance. The aluminum plate adopts PVDF fluorocarbon coating with kynar-500 and hylar5000 as the base material, and it will not fade for up to 25 years.



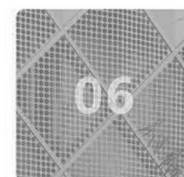
Good process performance. The aluminum plate can be processed into various complex geometric shapes such as plane, arc and sphere.



The layers are uniform and the colors are diverse. The advanced electrostatic spraying technology makes the paint and the aluminum plate adhere uniformly.



Not easy to stain, easy to clean and maintain. The non-adhesive properties of the fluorocarbon coating film make it difficult for contaminants to adhere to the surface and thus has a good antifouling function.



Installation and construction are convenient and quick. The aluminum plate has been processed in the factory. When in construction, there is no need to be cut, just fix it on the keel.



Can be recycled and reused. Aluminum veneer can be 100% recycled, which is different from decorative materials such as glass, stone, ceramics, and aluminum-plastic panels, and has a high recycling value.

ALUMINUM PANEL CATEGORY



Aluminium perforated panel

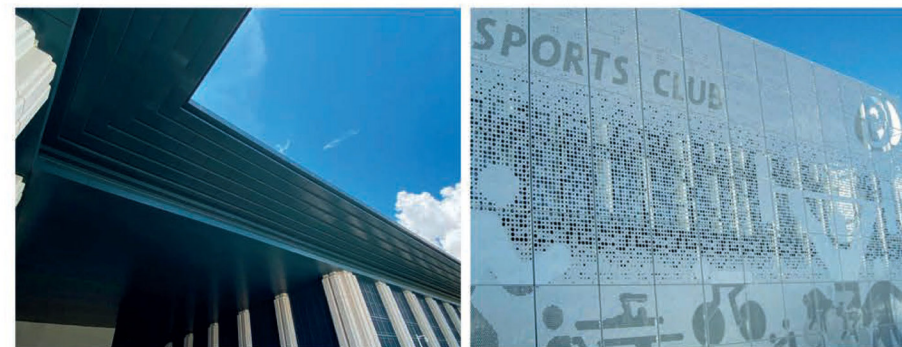


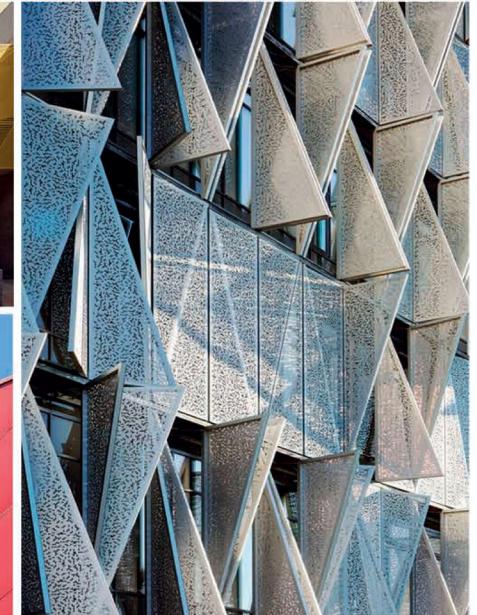
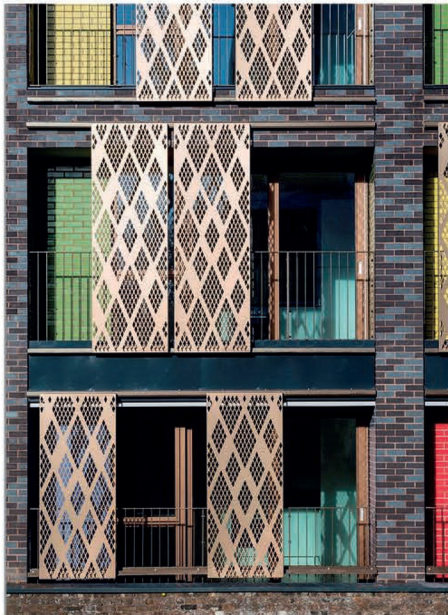
Use engraving and punching to make various pattern in the panel

It can make the panel continuously extend into space, and has the functions of light transmission and ventilation. Different patterns, different sizes and density of holes make the object surface dynamic. Combined with different environments, special-shaped processing can make the lines brighter and more elegant. Breaking through the traditional modeling concept, it is more suitable for various modern high-level clubs, home decoration, office and other occasions, and opens up diversified thinking space for architectural aesthetic. It is indeed a practical and beautiful new decorative form.



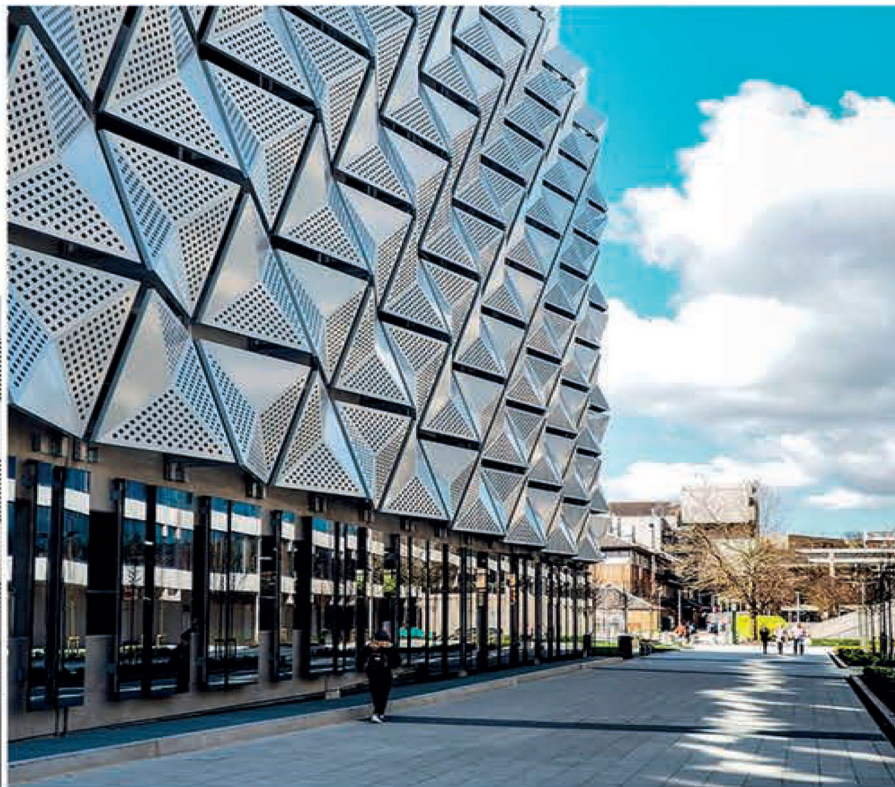
Aluminium facade panel



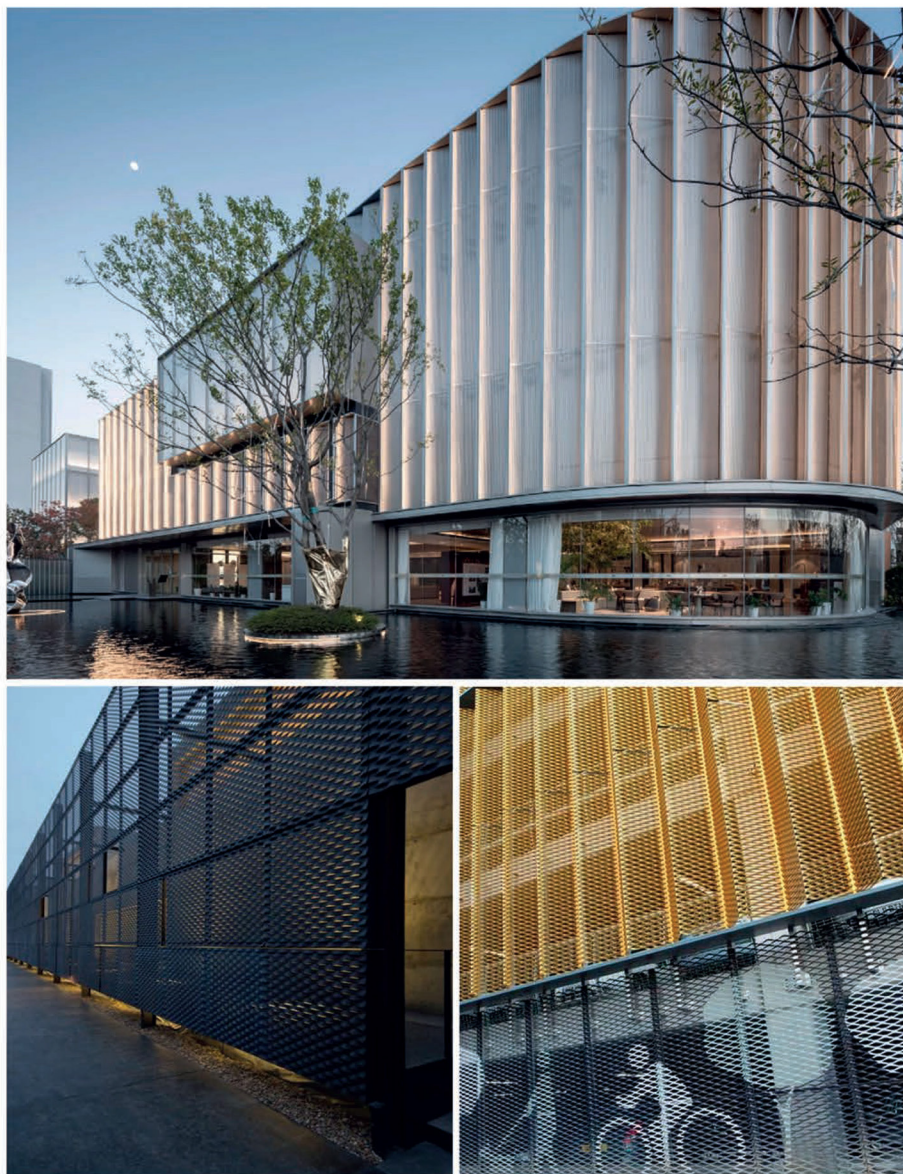


3D aluminium panel

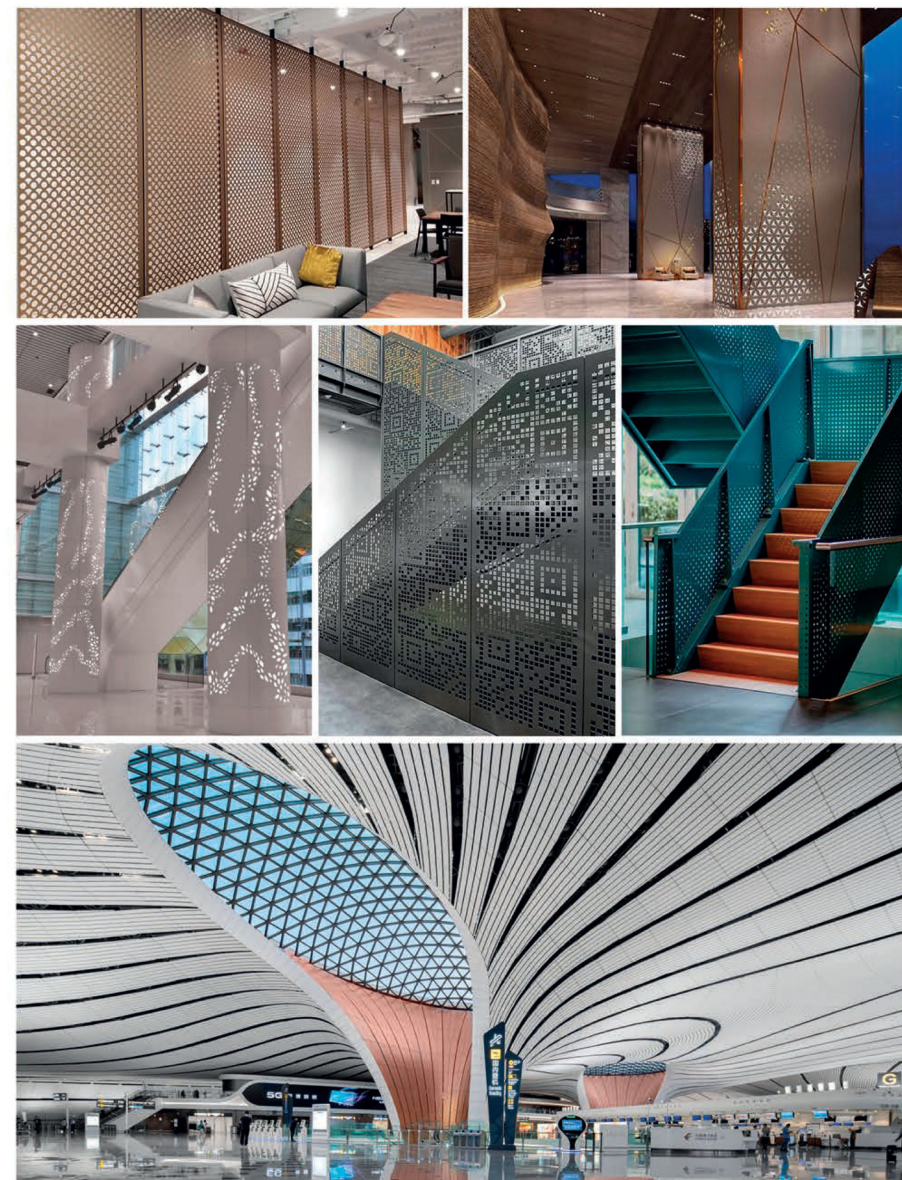
Modeling aluminum panel is also called special-shaped aluminum panel or 3D aluminum panel, which usually refers to some panels in complicated shapes or processed through multiple procedures. It is a special building material processed by professional aluminum veneer manufacturers according to specific design requirements, using precision processing technology, through cutting, hemming, grooving, punching and other complex processes. It has the characteristics of light weight, good rigidity, high strength, invariable shape, etc. It can also be processed into complex aggregate shapes such as plane, arc, circle, and sphere according to user's requirements.



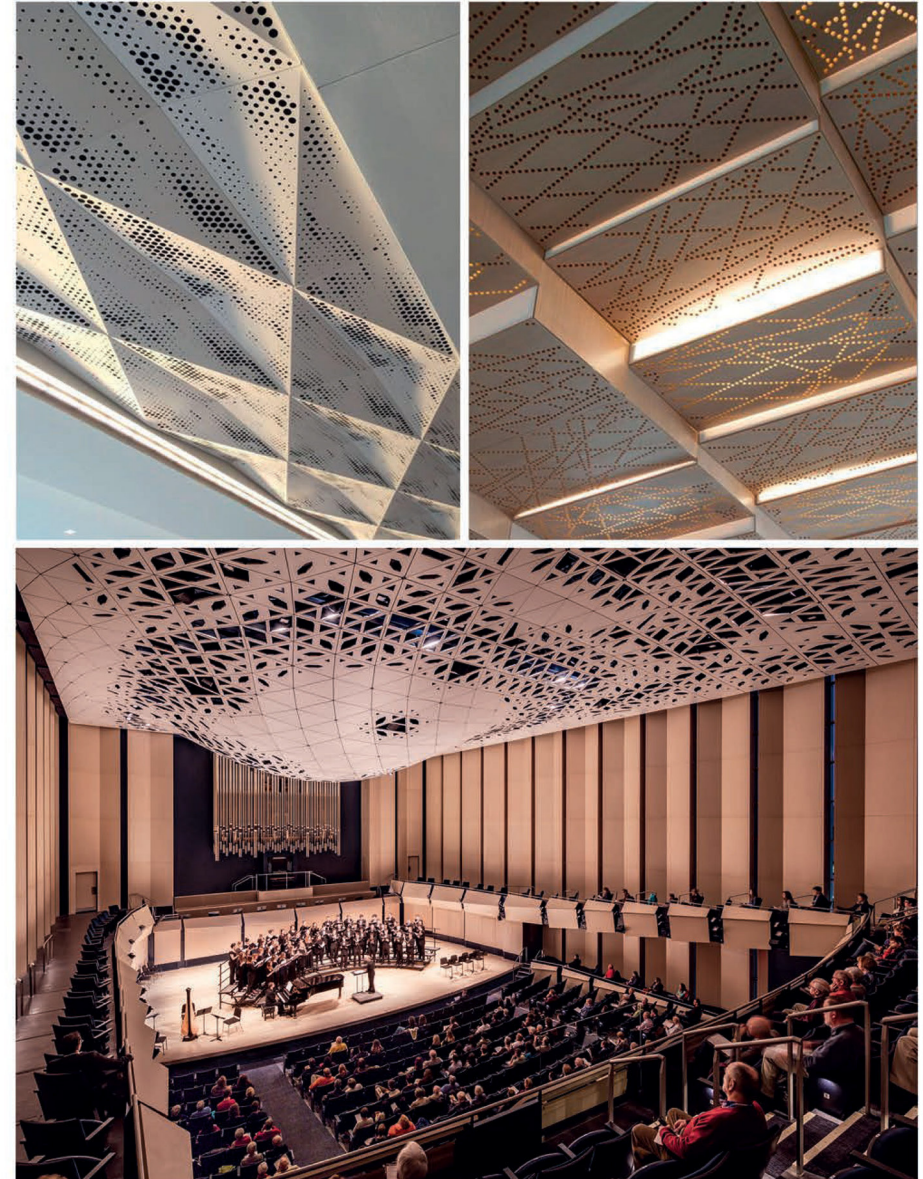
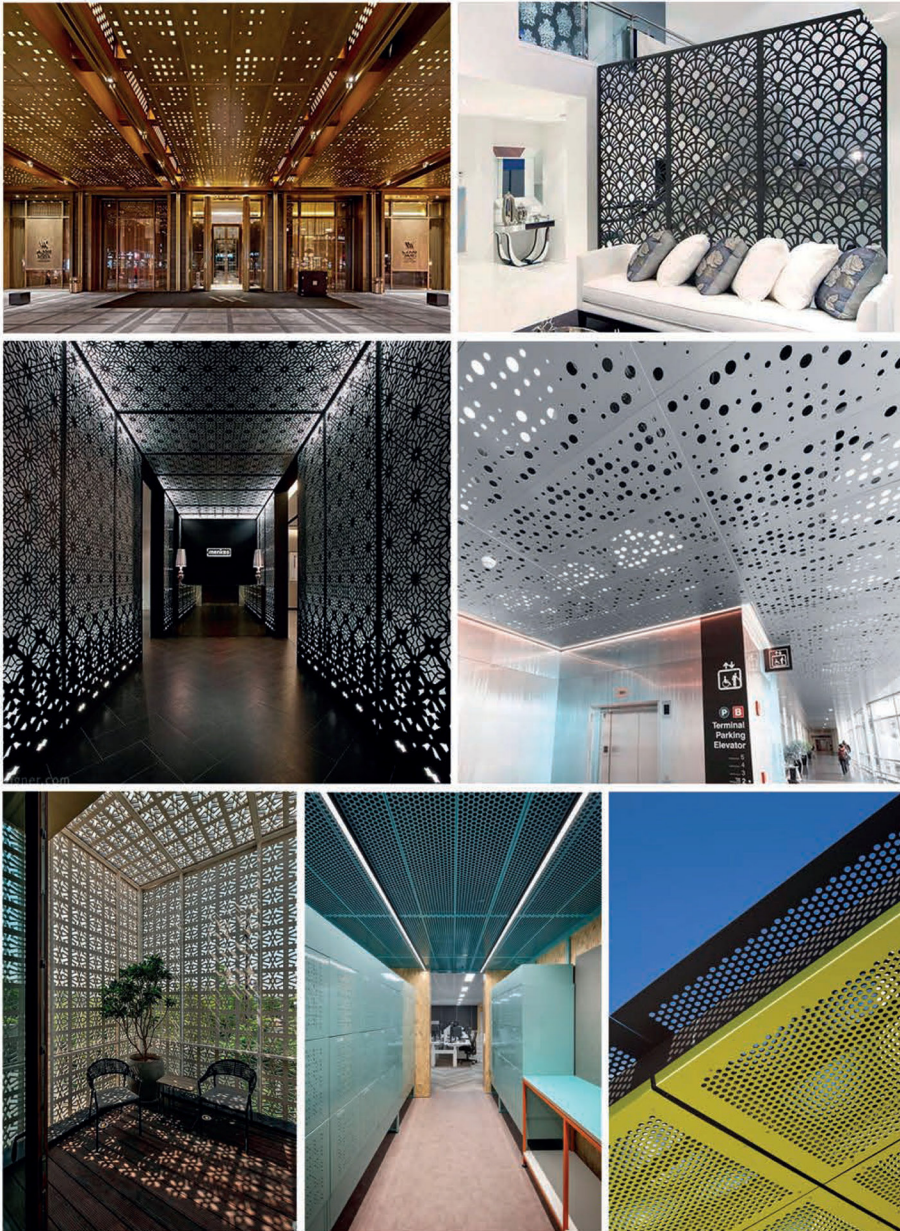
Aluminium expanded panel

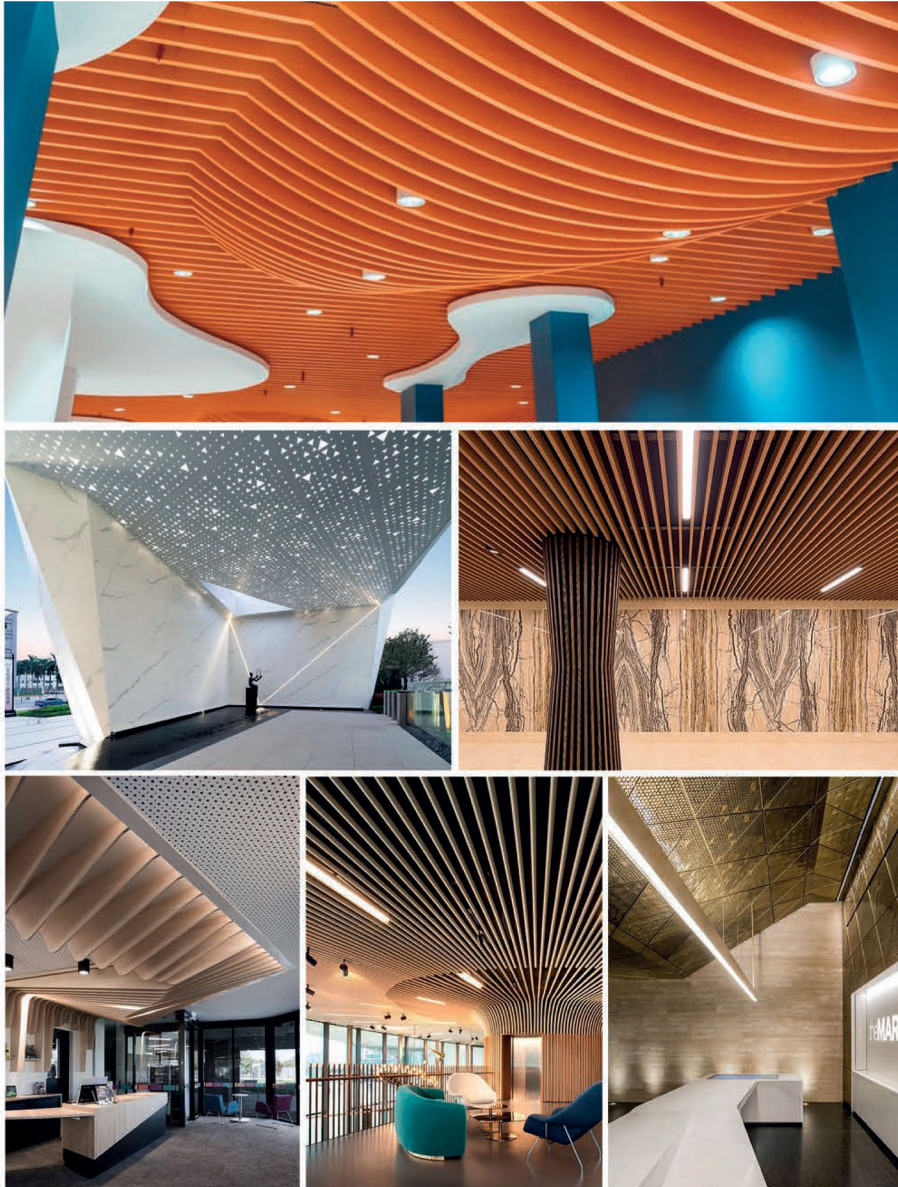


Indoor decor panel



Aluminium ceiling panel





COLOR CHOICES FOR ALUMINUM PANEL

Stone surface, wood finished and all RAL colours are available

