

ILLUMINATE YOUR LIFE
WITH OUR INOVATIVE SOLAR
TILES THAT BLENDS SEAMLESSLY
WITH YOUR ARCHITECTURE.



SHENZHEN WATTANK TECHNOLOGY CO., LTD.

Whatsapp: +86 139 2464 3535
Email: support@batterykitstore.com
Website: www.batterykitstore.com



ECO-FRIENDLY
SMART BIPV SYSTEM

**HIGH-END
CUSTOM SERVICE**
ENJOY GREEN
ELECTRICITY LIFE

SOLAR FISH-SCALE ROOF TILE - Y SERIES



HIGH SECURITY

Class A fireproof design, optional arc protection, quick shutdown.



HIGH PERFORMANCE

Comply with building material certification standards, super strong mechanical, hail impact resistance performance.



LONG LIFE SPAN

Materials are as the same life span as the building, Liner Warranty >30 years.



HIGH UTILIZATION

Fully utilized roof area, up to 90% of the installation can be utilized.

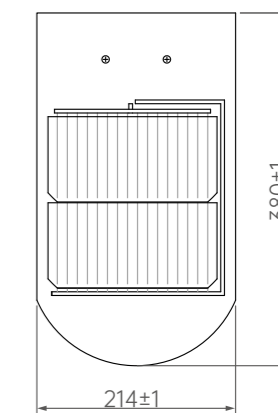


PHYSICAL PARAMETERS

Product model :	Y-1H30BDG-8W	Y-2H30BDG-16W	Y-4H30BDG-35W	Y-6H30BDG-50W
Color :	Black			
Dimensions(mm) :	380*214	380*400	380*800	380*1200
Weight(kg) :	1.5	2.8	5.5	8.3
Glass(material/thickness)(mm) :	3.2+3.2			
Cell size(mm) :	182*91			
Junction box :	≥IP67			
Cable type :	500mm/4mm ²			
Plug connector :	MC4			
Life span :	>30years			

DIMENSIONS

Unit:mm



ELECTRICAL PARAMETERS(STC)

Solar cells:	Monocrystalline			
Poweroutput(P max):	8W	16W	35W	50W
Module efficiency (%) :	15.3%	16%	17.3%	16.4%
Voltage at Pmax(V mpp):	1.22	2.45	5.28	7.53
Current at Pmax(I mpp):	6.55	6.52	6.62	6.64
Open-circuit current(V oc):	1.45	2.95	6.27	8.94
Short-circuit current(I sc):	6.88	6.86	6.97	6.99
STC:	AM=1.5, 1000W/m ² , Cells Temperature 25°C			

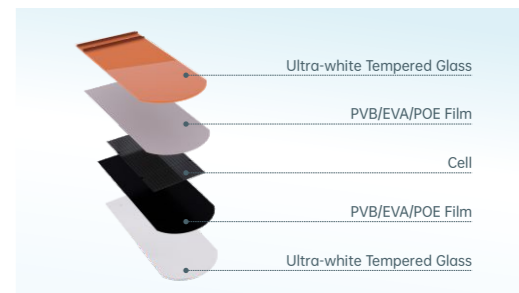
OPERATING CONDITIONS

Max. system voltage:	1500V
Max. series fuse rating:	15A
Operating temperature range:	-40°C~+85°C
Max. static load, front (e.g., snow):	5400Pa
Max. static load, back (e.g., wind):	2400Pa
Max. hailstone impact (diameter /velocity):	25mm/23m/s

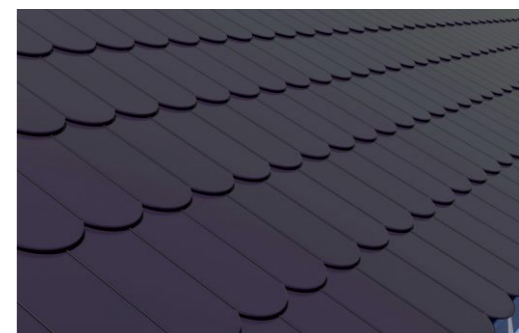
THERMAL CHARACTERISTICS

Nominal operating cell temperature:	NOTC	°C	45±2
Temperature coefficient of Pmax :	Y	%/°C	-0.350
Temperature coefficient of Voc :	βve	%/°C	-0.275
Temperature coefficient of Isc :	abc	%/°C	+0.045

STRUCTURE




CONSTRUCTION



PERFORMANCE GRADE

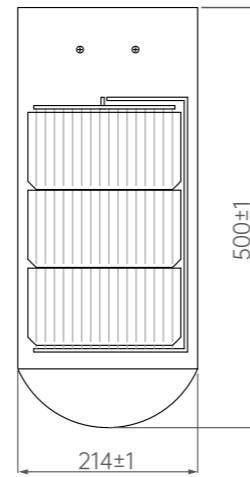
Load grade:	2400Pa
Fireproofing grade:	ClassA
Anti-hail grade:	φ25mm/23m/s
Operating temperature:	-40°C~+85°C
Operating humidity:	0-85%

PHYSICAL PARAMETERS

Product model :	Y-1.5H30BDG-12W	Y-3H30BDG-25W	Y-6H30BDG-50W	Y-9H30BDG-75W
Color :	Black 			
Dimensions(mm) :	500*214	500*400	500*800	500*1200
Weight(kg) :	1.8	3.7	8.3	11
Glass(material/thickness)(mm) :	3.2+3.2			
Cell size(mm) :	182*91			
Junction box :	≥IP67			
Cable type :	500mm/4mm ²			
Plug connector :	MC4			
Life span :	>30years			

DIMENSIONS

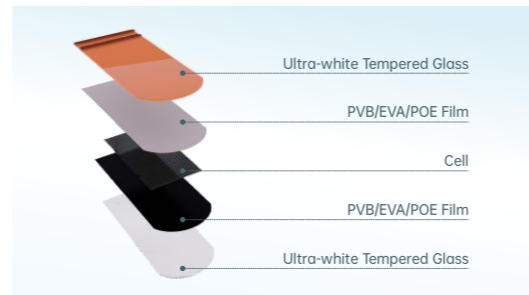
Unit:mm



ELECTRICAL PARAMETERS(STC)

Solar cells:	Monocrystalline			
Poweroutput(P max):	12W	25W	50W	75W
Module efficiency (%) :	15.5%	17.2%	16.4%	16.9%
Voltage at Pmax(V mpp):	1.85	3.83	7.53	11.28
Current at Pmax(I mpp):	6.5	6.52	6.64	6.65
Open-circuit current(V oc):	2.19	4.54	8.94	13.35
Short-circuit current(I sc):	6.84	6.87	6.99	7.02
STC:	AM=1.5, 1000W/m ² , Cells Temperature 25°C			

STRUCTURE



CONSTRUCTION



PERFORMANCE GRADE

Load grade:	2400Pa
Fireproofing grade:	ClassA
Anti-hail grade:	φ25mm/23m/s
Operating temperature:	-40°C~+85°C
Operating humidity:	0-85%


OPERATING CONDITIONS

Max. system voltage:	1500V
Max. series fuse rating:	15A
Operating temperature range:	-40°C~+85°C
Max. static load, front (e.g., snow):	5400Pa
Max. static load, back (e.g., wind):	2400Pa
Max. hailstone impact (diameter /velocity):	25mm/23m/s

THERMAL CHARACTERISTICS

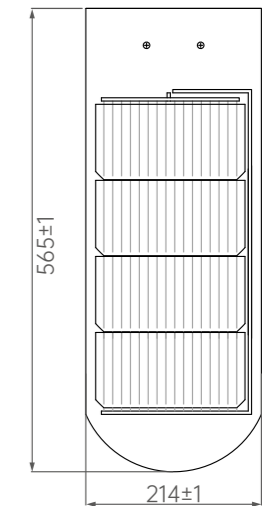
Nominal operating cell temperature:	NOTC	°C	45±2
Temperature coefficient of Pmax :	Y	%/°C	-0.350
Temperature coefficient of Voc :	βve	%/°C	-0.275
Temperature coefficient of Isc :	abc	%/°C	+0.045

PHYSICAL PARAMETERS

Product model :	Y-2H30BDG-16W	Y-4H30BDG-35W	Y-8H30BDG-65W	Y-16H30BDG-100W
Color :	Black 			
Dimensions(mm) :	565*214	565*400	565*800	565*1200
Weight(kg) :	2.8	5.5	8.3	12.4
Glass(material/thickness)(mm) :	3.2+3.2			
Cell size(mm) :	182*91			
Junction box :	≥IP67			
Cable type :	500mm/4mm ²			
Plug connector :	MC4			
Life span :	>30years			

DIMENSIONS

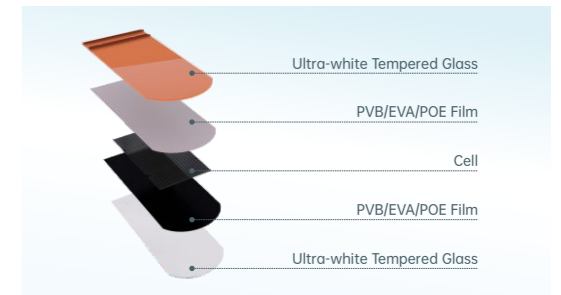
Unit:mm



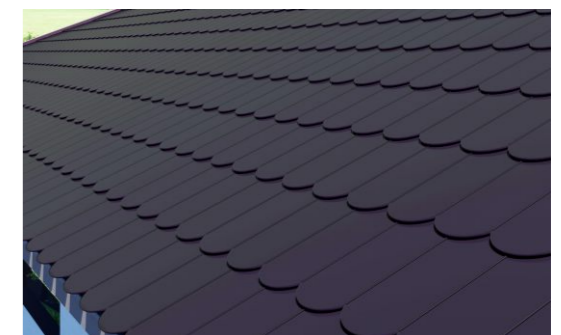
ELECTRICAL PARAMETERS(STC)

Solar cells:	Monocrystalline			
Poweroutput(P max):	16W	35W	65W	100W
Module efficiency (%) :	16%	17.30%	18.00%	18.50%
Voltage at Pmax(V mpp):	2.45	5.28	9.73	14.82
Current at Pmax(I mpp):	6.52	6.62	6.68	6.75
Open-circuit current(V oc):	2.95	6.27	11.55	17.6
Short-circuit current(I sc):	6.86	6.97	7.03	7.1
STC:	AM=1.5, 1000W/m ² , Cells Temperature 25°C			

STRUCTURE



CONSTRUCTION



PERFORMANCE GRADE

Load grade:	2400Pa
Fireproofing grade:	ClassA
Anti-hail grade:	φ25mm/23m/s
Operating temperature:	-40°C~+85°C
Operating humidity:	0-85%


OPERATING CONDITIONS

Max. system voltage:	1500V
Max. series fuse rating:	15A
Operating temperature range:	-40°C~+85°C
Max. static load, front (e.g., snow):	5400Pa
Max. static load, back (e.g., wind):	2400Pa
Max. hailstone impact (diameter /velocity):	25mm/23m/s

THERMAL CHARACTERISTICS

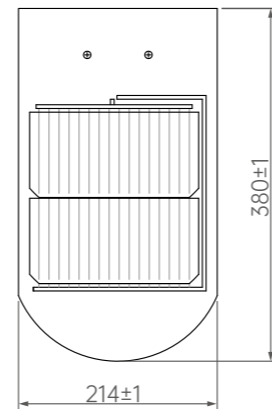
Nominal operating cell temperature:	NOTC	°C	45±2
Temperature coefficient of Pmax :	Y	%/°C	-0.350
Temperature coefficient of Voc :	βve	%/°C	-0.275
Temperature coefficient of Isc :	abc	%/°C	+0.045

PHYSICAL PARAMETERS

Product model :	Y-1H30BDG-6W	Y-2H30BDG-12W	Y-4H30BDG-25W	Y-6H30BDG-40W
Color :	Red 			
Dimensions(mm) :	380*214	380*400	380*800	380*1200
Weight(kg) :	1.5	2.8	5.5	8.3
Glass(material/thickness)(mm) :	3.2+3.2			
Cell size(mm) :	182*91			
Junction box :	≥IP67			
Cable type :	500mm/4mm ²			
Plug connector :	MC4			
Life span :	>30years			

DIMENSIONS

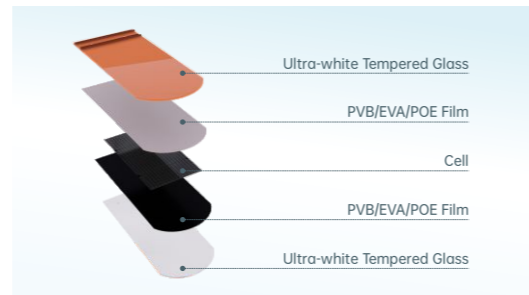
Unit:mm



ELECTRICAL PARAMETERS(STC)

Solar cells:	Monocrystalline			
Poweroutput(P max):	6W	12W	25W	40W
Module efficiency (%) :	11.5%	12%	12.4%	13.1%
Voltage at Pmax(V mpp):	1.2	2.42	4.96	7.5
Current at Pmax(I mpp):	5.12	5.12	5.1	5.3
Open-circuit current(V oc):	1.45	2.92	5.9	9.1
Short-circuit current(I sc):	5.4	5.42	5.38	5.57
STC:	AM=1.5, 1000W/m ² , Cells Temperature 25°C			

STRUCTURE



CONSTRUCTION



PERFORMANCE GRADE

Load grade:	2400Pa
Fireproofing grade:	ClassA
Anti-hail grade:	φ25mm/23m/s
Operating temperature:	-40°C~+85°C
Operating humidity:	0-85%


OPERATING CONDITIONS

Max. system voltage:	1500V
Max. series fuse rating:	15A
Operating temperature range:	-40°C~+85°C
Max. static load, front (e.g., snow):	5400Pa
Max. static load, back (e.g., wind):	2400Pa
Max. hailstone impact (diameter /velocity):	25mm/23m/s

THERMAL CHARACTERISTICS

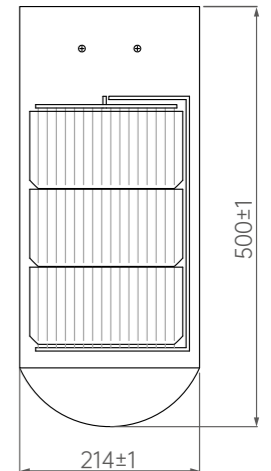
Nominal operating cell temperature:	NOTC	°C	45±2
Temperature coefficient of Pmax :	Y	%/°C	-0.350
Temperature coefficient of Voc :	βve	%/°C	-0.275
Temperature coefficient of Isc :	abc	%/°C	+0.045

PHYSICAL PARAMETERS

Product model :	Y-1.5H30BDG-9W	Y-3H30BDG-18W	Y-6H30BDG-40W	Y-9H30BDG-60W
Color :	Red 			
Dimensions(mm) :	500*214	500*400	500*800	500*1200
Weight(kg) :	1.8	3.7	8.3	11
Glass(material/thickness)(mm) :	3.2+3.2			
Cell size(mm) :	182*91			
Junction box :	≥IP67			
Cable type :	500mm/4mm ²			
Plug connector :	MC4			
Life span :	>30years			

DIMENSIONS

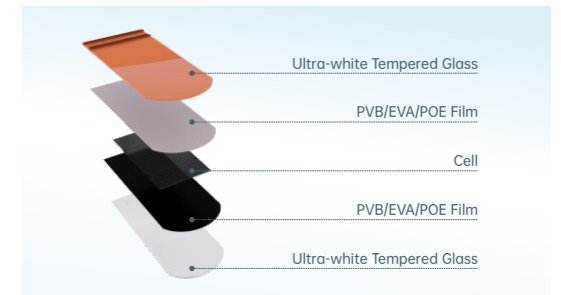
Unit:mm



ELECTRICAL PARAMETERS(STC)

Solar cells:	Monocrystalline			
Poweroutput(P max):	9W	18W	40W	60W
Module efficiency (%) :	11.6%	12.4%	13.1%	13.5%
Voltage at Pmax(V mpp):	1.83	3.56	7.5	11.35
Current at Pmax(I mpp):	5.1	5.15	5.3	5.3
Open-circuit current(V oc):	2.19	4.25	9.1	13.6
Short-circuit current(I sc):	5.37	5.42	5.57	5.57
STC:	AM=1.5, 1000W/m ² , Cells Temperature 25°C			

STRUCTURE



CONSTRUCTION



PERFORMANCE GRADE

Load grade:	2400Pa
Fireproofing grade:	ClassA
Anti-hail grade:	φ25mm/23m/s
Operating temperature:	-40°C~+85°C
Operating humidity:	0-85%


OPERATING CONDITIONS

Max. system voltage:	1500V
Max. series fuse rating:	15A
Operating temperature range:	-40°C~+85°C
Max. static load, front (e.g., snow):	5400Pa
Max. static load, back (e.g., wind):	2400Pa
Max. hailstone impact (diameter /velocity):	25mm/23m/s

THERMAL CHARACTERISTICS

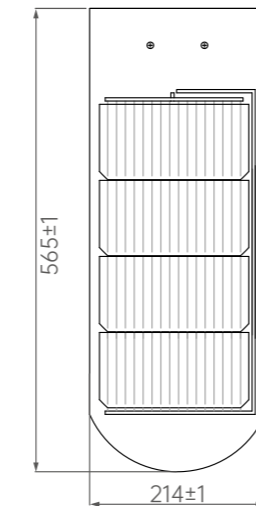
Nominal operating cell temperature:	NOTC	°C	45±2
Temperature coefficient of Pmax :	Y	%/°C	-0.350
Temperature coefficient of Voc :	βve	%/°C	-0.275
Temperature coefficient of Isc :	abc	%/°C	+0.045

PHYSICAL PARAMETERS

Product model :	Y-2H30BDG-12W	Y-4H30BDG-25W	Y-8H30BDG-50W	Y-16H30BDG-75W
Color :	Red 			
Dimensions(mm) :	565*214	565*400	565*800	565*1200
Weight(kg) :	2.8	5.5	8.3	12.4
Glass(material/thickness)(mm) :	3.2+3.2			
Cell size(mm) :	182*91			
Junction box :	≥IP67			
Cable type :	500mm/4mm ²			
Plug connector :	MC4			
Life span :	>30years			

DIMENSIONS

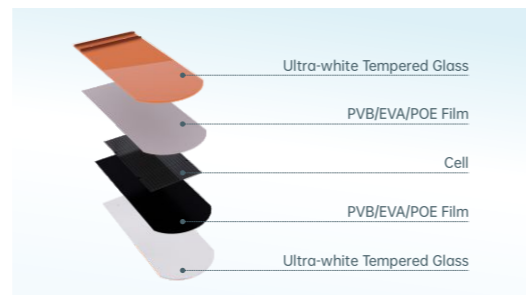
Unit:mm



ELECTRICAL PARAMETERS(STC)

Solar cells:	Monocrystalline			
Poweroutput(P max):	12W	25W	50W	75W
Module efficiency (%) :	12%	12.4%	13.9%	13.9%
Voltage at Pmax(V mpp):	2.42	4.96	9.8	14.53
Current at Pmax(I mpp):	5.12	5.1	5.2	5.22
Open-circuit current(V oc):	2.92	5.9	11.78	17.3
Short-circuit current(I sc):	5.42	5.38	5.48	5.5
STC:	AM=1.5, 1000W/m ² , Cells Temperature 25°C			

STRUCTURE



CONSTRUCTION



OPERATING CONDITIONS

Max. system voltage:	1500V
Max. series fuse rating:	15A
Operating temperature range:	-40°C~+85°C
Max. static load, front (e.g., snow):	5400Pa
Max. static load, back (e.g., wind):	2400Pa
Max. hailstone impact (diameter /velocity):	25mm/23m/s

THERMAL CHARACTERISTICS

Nominal operating cell temperature:	NOTC	°C	45±2
Temperature coefficient of Pmax :	Y	%/°C	-0.350
Temperature coefficient of Voc :	βve	%/°C	-0.275
Temperature coefficient of Isc :	abc	%/°C	+0.045

PERFORMANCE GRADE

Load grade:	2400Pa
Fireproofing grade:	ClassA
Anti-hail grade:	φ25mm/23m/s
Operating temperature:	-40°C~+85°C
Operating humidity:	0-85%

SOLAR FLAT ROOF TILE- F SERIES



HIGH SECURITY

Class A fireproof design, optional arc protection, quick shutdown.



HIGH PERFORMANCE

Comply with building material certification standards, super strong mechanical, hail impact resistance performance.



LONG LIFE SPAN

Materials are as the same life span as the building, Liner Warranty >30 years.

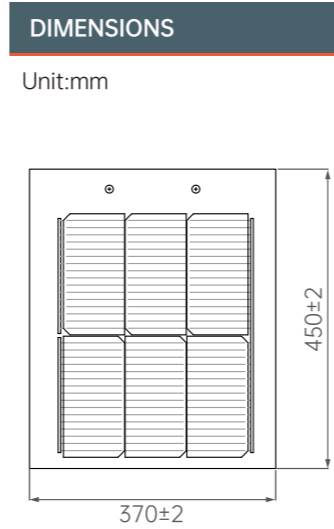


EASY INSTALLATION

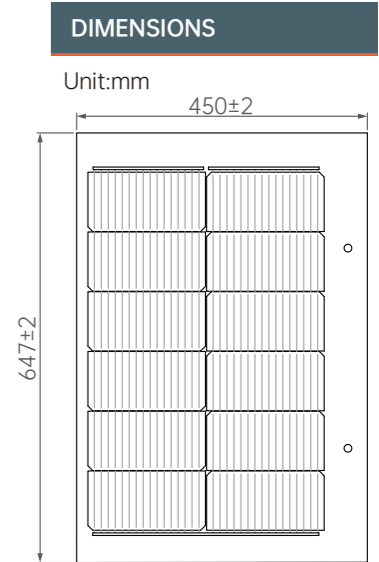
Assembly structure design, efficient and quick installation.



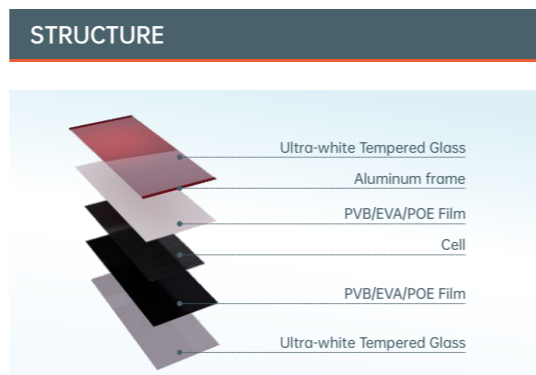
PHYSICAL PARAMETERS	
Product model :	F-3H30NDG-25W F-3H30NDG-20W F-3H30NDG-20W F-3H30NDG-18W
Color :	Black ■ Red ■ Grey ■ Brown ■
Dimensions(mm) :	370*450*13
Weight(kg) :	2.8
Glass(material/thickness)(mm) :	3.2+3.2
Cell size(mm) :	182*91
Junction box :	≥IP67
Cable type :	400mm/4mm ²
Plug connector :	MC4
Life span :	>30years



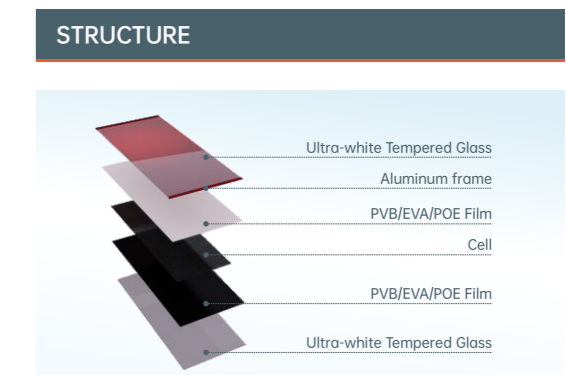
PHYSICAL PARAMETERS	
Product model :	F-6H30NDG-50W F-6H30NDG-40W F-6H30NDG-40W F-6H30NDG-38W
Color :	Black ■ Red ■ Grey ■ Brown ■
Dimensions(mm) :	647*450*13
Weight(kg) :	5
Glass(material/thickness)(mm) :	3.2+3.2
Cell size(mm) :	182*91
Junction box :	≥IP67
Cable type :	400mm/4mm ²
Plug connector :	MC4
Life span :	>30years



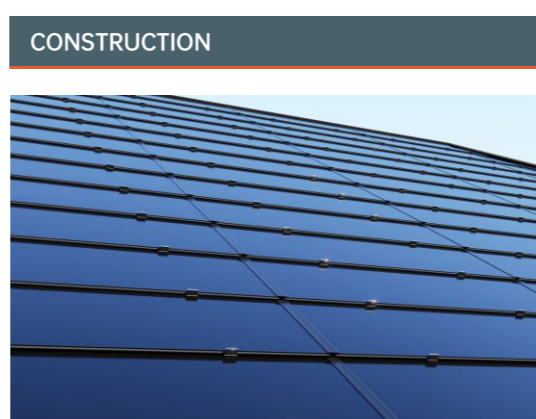
ELECTRICAL PARAMETERS(STC)				
Solar cells:	Monocrystalline			
Poweroutput(P max):	25W	20W	20W	18W
Module efficiency (%) :	18.9%	15.1%	15.1%	13.6%
Voltage at Pmax(V mpp):	3.82	3.65	3.65	3.42
Current at Pmax(I mpp):	6.53	5.47	5.47	5.26
Open-circuit current(V oc):	4.57	4.41	4.41	4.11
Short-circuit current(I sc):	6.81	5.75	5.75	5.54
STC:	AM=1.5, 1000W/m ² , Cells Temperature 25°C			



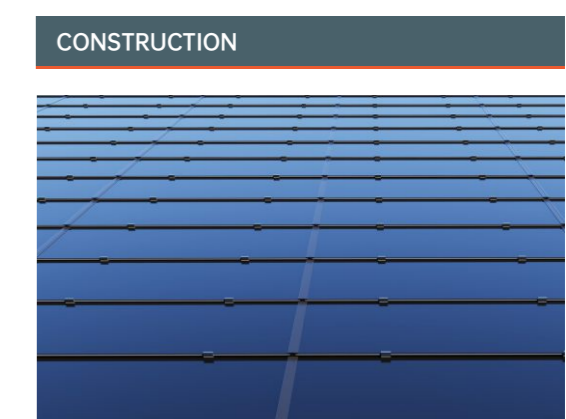
ELECTRICAL PARAMETERS(STC)				
Solar cells:	Monocrystalline			
Poweroutput(P max):	50W	40W	40W	38W
Module efficiency (%) :	20.6%	16.5%	16.5%	15.6%
Voltage at Pmax(V mpp):	7.65	7.35	7.35	7.18
Current at Pmax(I mpp):	6.54	5.45	5.45	5.3
Open-circuit current(V oc):	8.96	8.75	8.75	8.63
Short-circuit current(I sc):	6.92	5.74	5.74	5.57
STC:	AM=1.5, 1000W/m ² , Cells Temperature 25°C			



OPERATING CONDITIONS	
Max. system voltage:	1500V
Max. series fuse rating:	15A
Operating temperature range:	-40°C~+85°C
Max. static load, front (e.g., snow):	5400Pa
Max. static load, back (e.g., wind):	2400Pa
Max. hailstone impact (diameter /velocity):	25mm/23m/s



OPERATING CONDITIONS	
Max. system voltage:	1500V
Max. series fuse rating:	15A
Operating temperature range:	-40°C~+85°C
Max. static load, front (e.g., snow):	5400Pa
Max. static load, back (e.g., wind):	2400Pa
Max. hailstone impact (diameter /velocity):	25mm/23m/s



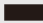


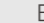
THERMAL CHARACTERISTICS			
Nominal operating cell temperature:	NOTC	°C	45±2
Temperature coefficient of Pmax :	Y	%/°C	-0.350
Temperature coefficient of Voc :	βve	%/°C	-0.275
Temperature coefficient of Isc :	abc	%/°C	+0.045

PERFORMANCE GRADE	
Load grade:	2400Pa
Fireproofing grade:	ClassA
Anti-hail grade:	φ25mm/23m/s
Operating temperature:	-40°C~+85°C
Operating humidity:	0-85%

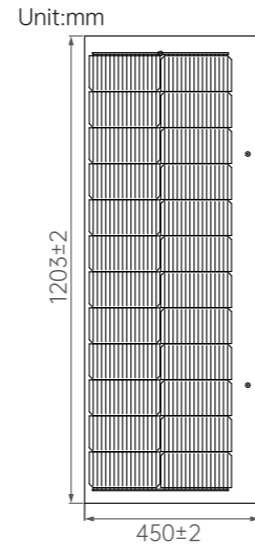
THERMAL CHARACTERISTICS			
Nominal operating cell temperature:	NOTC	°C	45±2
Temperature coefficient of Pmax :	Y	%/°C	-0.350
Temperature coefficient of Voc :	βve	%/°C	-0.275
Temperature coefficient of Isc :	abc	%/°C	+0.045

PERFORMANCE GRADE	
Load grade:	2400Pa
Fireproofing grade:	ClassA
Anti-hail grade:	φ25mm/23m/s
Operating temperature:	-40°C~+85°C
Operating humidity:	0-85%

PHYSICAL PARAMETERS

Product model :	F-12H30NDG-100W	F-12H30NDG-80W	F-12H30NDG-80W	F-12H30NDG-75W
Color :	Black 	Red 	Grey 	Brown 
Dimensions(mm) :	1203*450*13			
Weight(kg) :	9.3			
Glass(material/thickness)(mm) :	3.2+3.2			
Cell size(mm) :	182*91			
Junction box :	≥IP67			
Cable type :	400mm/4mm ²			
Plug connector :	MC4			
Life span :	>30years			

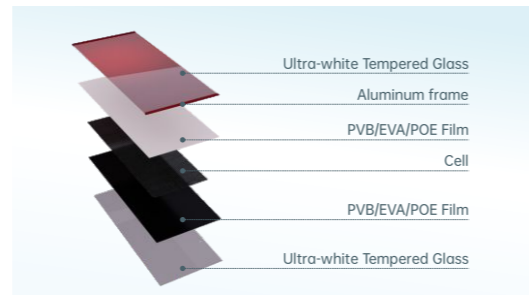
DIMENSIONS



ELECTRICAL PARAMETERS(STC)

Solar cells:	Monocrystalline			
Poweroutput(P max):	100W	80W	80W	75W
Module efficiency (%) :	21.5%	17.2%	17.2%	15.6
Voltage at Pmax(V mpp):	14.45	14.4	14.4	14.09
Current at Pmax(I mpp):	6.98	5.57	5.57	5.32
Open-circuit current(V oc):	16.85	17.2	17.2	17.04
Short-circuit current(I sc):	7.34	5.86	5.86	5.57
STC:	AM=1.5, 1000W/m ² , Cells Temperature 25°C			

STRUCTURE



CONSTRUCTION



PERFORMANCE GRADE

Load grade:	2400Pa
Fireproofing grade:	ClassA
Anti-hail grade:	φ25mm/23m/s
Operating temperature:	-40°C~+85°C
Operating humidity:	0-85%



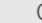
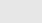
OPERATING CONDITIONS

Max. system voltage:	1500V
Max. series fuse rating:	15A
Operating temperature range:	-40°C~+85°C
Max. static load, front (e.g., snow):	5400Pa
Max. static load, back (e.g., wind):	2400Pa
Max. hailstone impact (diameter /velocity):	25mm/23m/s

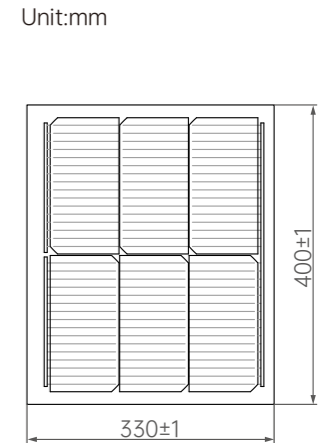
THERMAL CHARACTERISTICS

Nominal operating cell temperature:	NOTC	°C	45±2
Temperature coefficient of Pmax :	Y	%/°C	-0.350
Temperature coefficient of Voc :	βve	%/°C	-0.275
Temperature coefficient of Isc :	abc	%/°C	+0.045

PHYSICAL PARAMETERS

Product model :	F-3H30NDG-25W	F-3H30NDG-20W	F-3H30NDG-20W	F-3H30NDG-18W
Color :	Black 	Red 	Grey 	Brown 
Dimensions(mm) :	330*400*7.4			
Weight(kg) :	2.4			
Glass(material/thickness)(mm) :	3.2+3.2			
Cell size(mm) :	182*91			
Junction box :	≥IP67			
Cable type :	400mm/4mm ²			
Plug connector :	MC4			
Life span :	>30years			

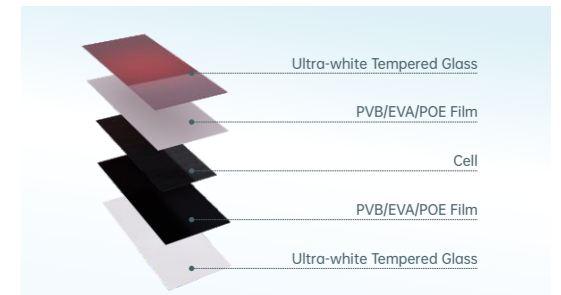
DIMENSIONS



ELECTRICAL PARAMETERS(STC)

Solar cells:	Monocrystalline			
Poweroutput(P max):	25W	20W	20W	18W
Module efficiency (%) :	18.9%	15.1%	15.1%	13.6%
Voltage at Pmax(V mpp):	3.82	3.65	3.65	3.42
Current at Pmax(I mpp):	6.53	5.47	5.47	5.26
Open-circuit current(V oc):	4.57	4.41	4.41	4.11
Short-circuit current(I sc):	6.81	5.75	5.75	5.54
STC:	AM=1.5, 1000W/m ² , Cells Temperature 25°C			

STRUCTURE



CONSTRUCTION



PERFORMANCE GRADE

Load grade:	2400Pa
Fireproofing grade:	ClassA
Anti-hail grade:	φ25mm/23m/s
Operating temperature:	-40°C~+85°C
Operating humidity:	0-85%

OPERATING CONDITIONS

Max. system voltage:	1500V
Max. series fuse rating:	15A
Operating temperature range:	-40°C~+85°C
Max. static load, front (e.g., snow):	5400Pa
Max. static load, back (e.g., wind):	2400Pa
Max. hailstone impact (diameter /velocity):	25mm/23m/s

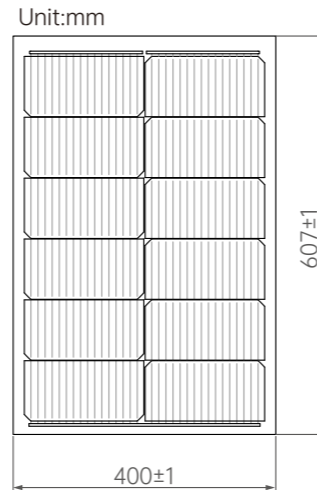
THERMAL CHARACTERISTICS

Nominal operating cell temperature:	NOTC	°C	45±2
Temperature coefficient of Pmax :	Y	%/°C	-0.350
Temperature coefficient of Voc :	βve	%/°C	-0.275
Temperature coefficient of Isc :	abc	%/°C	+0.045

PHYSICAL PARAMETERS

Product model :	F-6H30NDG-50W F-6H30NDG-40W F-6H30NDG-40W F-6H30NDG-38W
Color :	Black Red Grey Brown
Dimensions(mm) :	607*400*7.4
Weight(kg) :	4.3
Glass(material/thickness)(mm) :	3.2+3.2
Cell size(mm) :	182*91
Junction box :	≥IP67
Cable type :	400mm/4mm ²
Plug connector :	MC4
Life span :	>30years

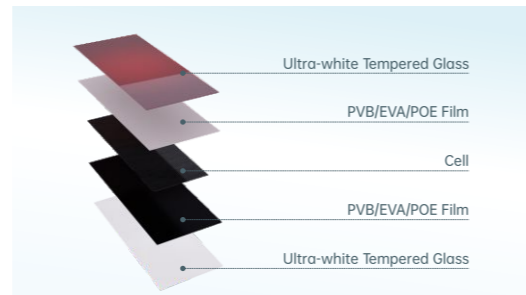
DIMENSIONS



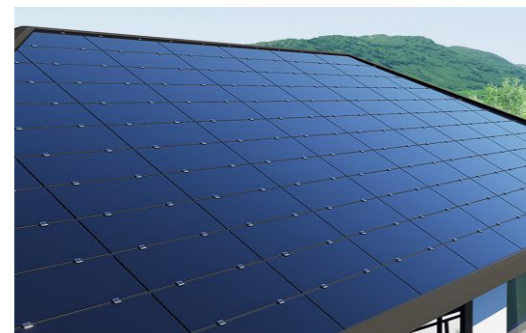
ELECTRICAL PARAMETERS(STC)

Solar cells:	Monocrystalline			
Poweroutput(P max):	50W	40W	40W	38W
Module efficiency (%) :	20.6%	16.5%	16.5%	15.6%
Voltage at Pmax(V mpp):	7.65	7.35	7.35	7.18
Current at Pmax(I mpp):	6.54	5.45	5.45	5.3
Open-circuit current(V oc):	8.96	8.75	8.75	8.63
Short-circuit current(I sc):	6.92	5.74	5.74	5.57
STC:	AM=1.5, 1000W/m ² , Cells Temperature 25°C			

STRUCTURE



CONSTRUCTION



PERFORMANCE GRADE

Load grade:	2400Pa
Fireproofing grade:	ClassA
Anti-hail grade:	φ25mm/23m/s
Operating temperature:	-40°C~+85°C
Operating humidity:	0-85%

OPERATING CONDITIONS

Max. system voltage:	1500V
Max. series fuse rating:	15A
Operating temperature range:	-40°C~+85°C
Max. static load, front (e.g., snow):	5400Pa
Max. static load, back (e.g., wind):	2400Pa
Max. hailstone impact (diameter /velocity):	25mm/23m/s

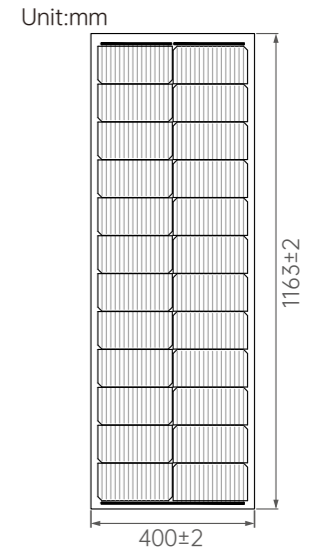
THERMAL CHARACTERISTICS

Nominal operating cell temperature:	NOTC	°C	45±2
Temperature coefficient of Pmax :	Y	%/°C	-0.350
Temperature coefficient of Voc :	βve	%/°C	-0.275
Temperature coefficient of Isc :	abc	%/°C	+0.045

PHYSICAL PARAMETERS

Product model :	F-12H30NDG-100W F-12H30NDG-80W F-12H30NDG-80W F-12H30NDG-75W
Color :	Black Red Grey Brown
Dimensions(mm) :	1163*400*7.4
Weight(kg) :	8.1
Glass(material/thickness)(mm) :	3.2+3.2
Cell size(mm) :	182*91
Junction box :	≥IP67
Cable type :	400mm/4mm ²
Plug connector :	MC4
Life span :	>30years

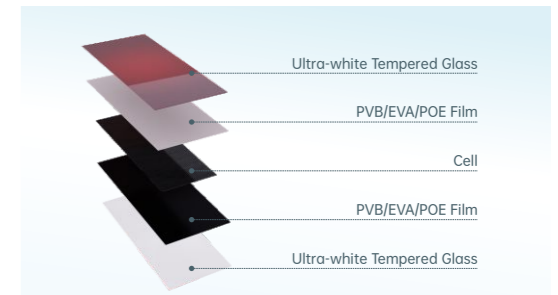
DIMENSIONS



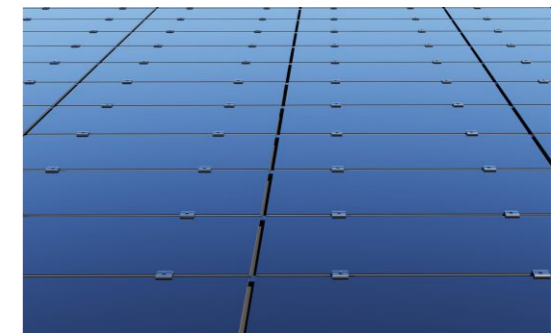
ELECTRICAL PARAMETERS(STC)

Solar cells:	Monocrystalline			
Poweroutput(P max):	100W	80W	80W	75W
Module efficiency (%) :	21.5%	17.2%	17.2%	15.6%
Voltage at Pmax(V mpp):	14.45	14.4	14.4	14.09
Current at Pmax(I mpp):	6.98	5.57	5.57	5.32
Open-circuit current(V oc):	16.85	17.2	17.2	17.04
Short-circuit current(I sc):	7.34	5.86	5.86	5.57
STC:	AM=1.5, 1000W/m ² , Cells Temperature 25°C			

STRUCTURE



CONSTRUCTION



PERFORMANCE GRADE

Load grade:	2400Pa
Fireproofing grade:	ClassA
Anti-hail grade:	φ25mm/23m/s
Operating temperature:	-40°C~+85°C
Operating humidity:	0-85%

OPERATING CONDITIONS

Max. system voltage:	1500V
Max. series fuse rating:	15A
Operating temperature range:	-40°C~+85°C
Max. static load, front (e.g., snow):	5400Pa
Max. static load, back (e.g., wind):	2400Pa
Max. hailstone impact (diameter /velocity):	25mm/23m/s

THERMAL CHARACTERISTICS

Nominal operating cell temperature:	NOTC	°C	45±2
Temperature coefficient of Pmax :	Y	%/°C	-0.350
Temperature coefficient of Voc :	βve	%/°C	-0.275
Temperature coefficient of Isc :	abc	%/°C	+0.045

SOLAR CLAY TILE-T SERIES



EASY INSTALLATION

Assembly structure design, efficient and quick installation.



STYLISH DESIGN

Professional technical team, providing stunning design according to the construction drawing.



HIGH STANDARD

Comply with CE, TUV certification standard, providing worry-free service.



STRONG WATERPROOFING

High weatherproof performance, available for multi-direction and multi-angle sloped roof design applications.



PHYSICAL PARAMETERS

Product model :	T-1.5H30NDG-12W	T-1.5H30NDG-15W
Color :	Black ■	Black ■
Dimensions(mm) :	400*300*23	
Weight(kg) :	3.7	
Glass(material/thickness)(mm) :	2.0+2.0	
Cell size(mm) :	182*91	
Junction box :	≥IP67	
Cable type :	500mm/4mm ²	
Plug connector :	MC4	
Life span :	>30years	

ELECTRICAL PARAMETERS(STC)

Solar cells:	Monocrystalline	
Poweroutput(P max):	12W	15W
Module efficiency (%) :	15.3%	19.2%
Voltage at Pmax(V mpp):	1.86	1.88
Current at Pmax(I mpp):	6.52	8.35
Open-circuit current(V oc):	2.18	2.174
Short-circuit current(I sc):	6.86	8.65
STC:	AM=1.5, 1000W/m ² , Cells Temperature 25°C	

OPERATING CONDITIONS

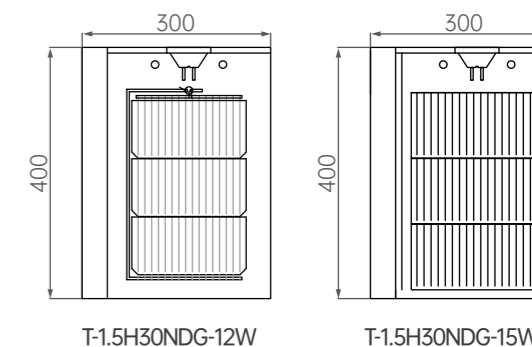
Max. system voltage:	1500V
Max. series fuse rating:	15A
Operating temperature range:	-40°C~+85°C
Max. static load, front (e.g., snow):	5400Pa
Max. static load, back (e.g., wind):	2400Pa
Max. hailstone impact (diameter /velocity):	25mm/23m/s

THERMAL CHARACTERISTICS

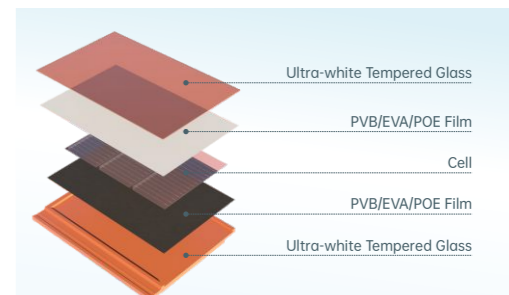
Nominal operating cell temperature:	NOTC	°C	45±2
Temperature coefficient of Pmax :	Y	%/°C	-0.350
Temperature coefficient of Voc :	βve	%/°C	-0.275
Temperature coefficient of Isc :	abc	%/°C	+0.045

DIMENSIONS

Unit:mm



STRUCTURE



CONSTRUCTION



PERFORMANCE GRADE

Load grade:	2400Pa
Fireproofing grade:	ClassA
Anti-hail grade:	φ25mm/23m/s
Operating temperature:	-40°C~+85°C
Operating humidity:	0-85%

HIGH EFFICIENCY BIPV- B SERIES



HIGH SECURITY

Class A fireproof design, optional arc protection, quick shutdown.



HIGH PERFORMANCE

Comply with building material certification standards, super strong mechanical, hail impact resistance performance.



LONG LIFE SPAN

Materials are as the same life span as the building, Liner Warranty >30 years.



HIGH EFFICIENCY

Highly efficient power generation, up to 22.5% conversion efficiency.



PHYSICAL PARAMETERS

Product model :	ZDNY-54H30M-430
Color :	Black ■
Dimensions(mm) :	1724*1134*30
Weight(kg) :	20.8
Glass(material/thickness)(mm) :	2.0+2.0
Cell size(mm) :	182*91
Junction box :	≥IP67
Cable type :	+190mm/-320mm/4mm ²
Plug connector :	MC4
Life span :	>30years

ELECTRICAL PARAMETERS(STC)

Solar cells:	Monocrystalline
Poweroutput(P max):	430W
Module efficiency (%) :	22%
Voltage at Pmax(V mpp):	32.33
Current at Pmax(I mpp):	13.3
Open-circuit current(V oc):	37.91
Short-circuit current(I sc):	14.08
STC:	AM=1.5, 1000W/m ² , Cells Temperature 25°C

OPERATING CONDITIONS

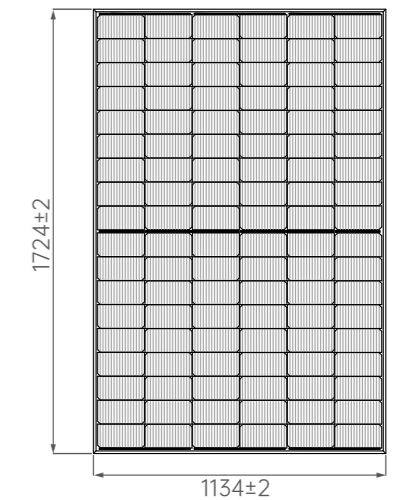
Max. system voltage:	1500V
Max. series fuse rating:	15A
Operating temperature range:	-40°C~+85°C
Max. static load, front (e.g., snow):	5400Pa
Max. static load, back (e.g., wind):	2400Pa
Max. hailstone impact (diameter /velocity):	25mm/23m/s

THERMAL CHARACTERISTICS

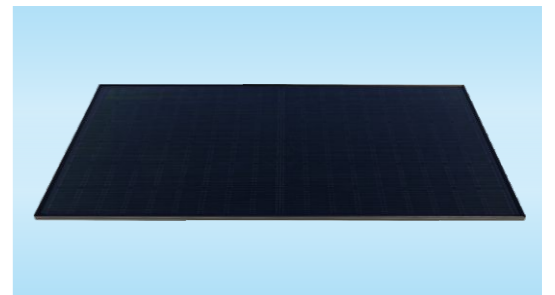
Nominal operating cell temperature:	NOTC	°C	45±2
Temperature coefficient of Pmax :	Y	%/°C	-0.350
Temperature coefficient of Voc :	βve	%/°C	-0.275
Temperature coefficient of Isc :	abc	%/°C	+0.045

DIMENSIONS

Unit:mm



STRUCTURE



CONSTRUCTION



PERFORMANCE GRADE

Load grade:	2400Pa
Fireproofing grade:	ClassA
Anti-hail grade:	φ25mm/23m/s
Operating temperature:	-40°C~+85°C
Operating humidity:	0-85%

SOLAR CURTAIN WALL TILE - Q SERIES



STUNNING COLOR

Nano-spray glaze full color gamut, accept customization, providing a visual feast.



STRONG TEXTURE

Anti-hail, anti-fire, waterproof, high quality ultra-white tempered glass with strong texture.



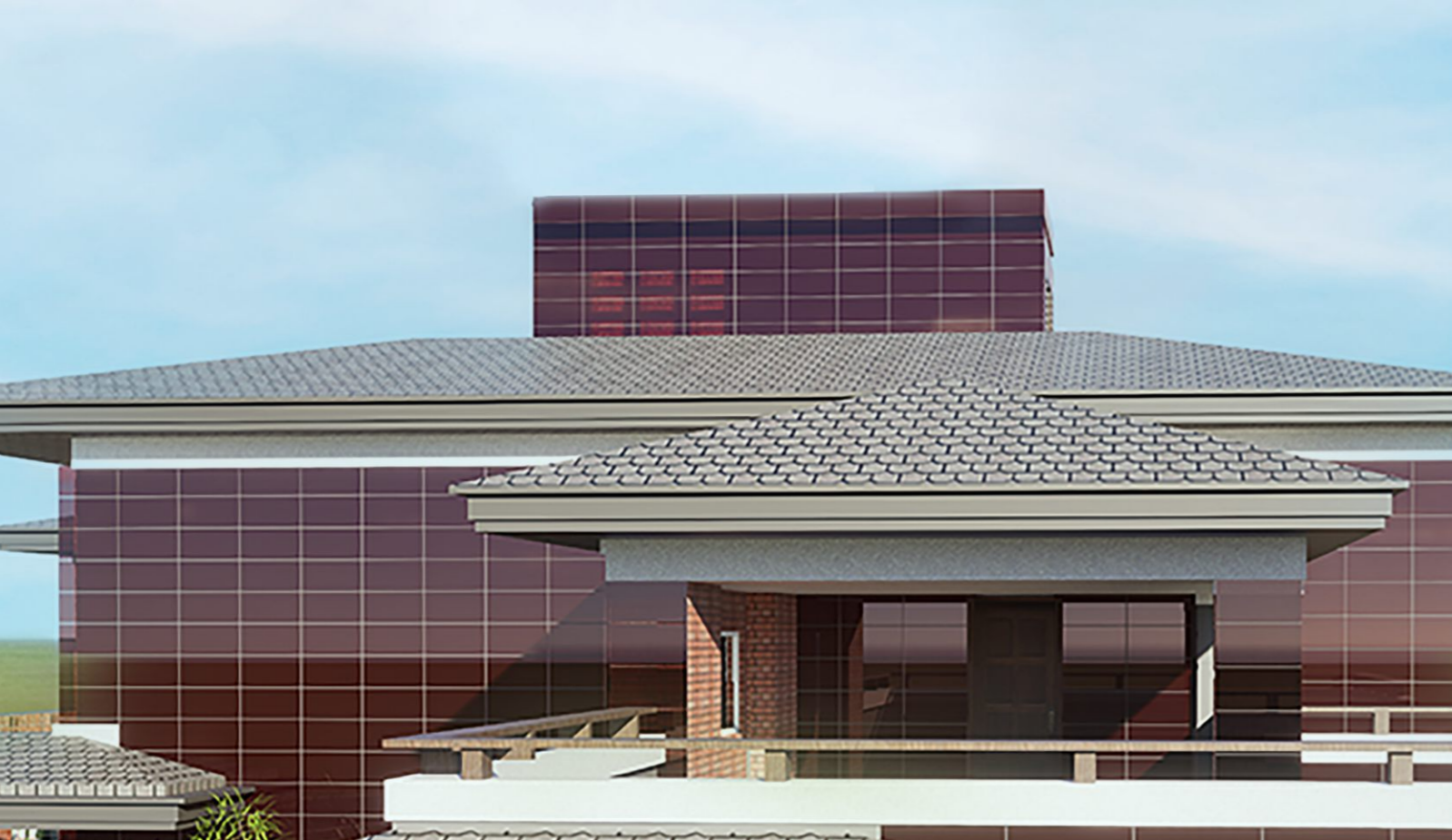
HIGH INTEGRATION

Perfectly integrate the solar tiles into the architecture, generate green power from the sun, create a sustainable planet.



STYLISH DESIGN

Professional technical team, providing stunning design according to the construction drawing.



PHYSICAL PARAMETERS

Product model : Q-18H30NDG-145W Q-18H30NDG-120W Q-18H30NDG-110W Q-18H30NDG-100W Q-18H30NDG-110W Q-18H30NDG-125W

Color: Black  Blue  brown  Red  Green  Orange  Grey 

Dimensions(mm): 1200*600*7.4

Weight(kg): 12.5

Glass(material/thickness)(mm): 3.2+3.2

Cell size(mm): 182*91

Junction box: \geq IP67

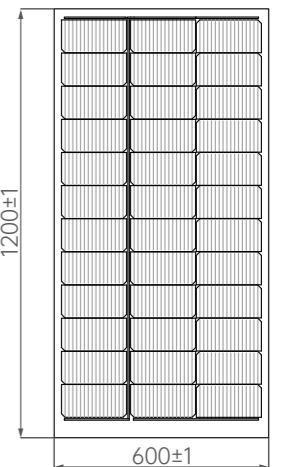
Cable type: 500mm/4mm²

Plug connector: MC4

Life span: >30years

DIMENSIONS

Unit:mm



ELECTRICAL PARAMETERS(STC)

Solar cells:	Monocrystalline					
Poweroutput(P max):	145W	120W	110W	100W	110W	125W
Module efficiency (%):	20.1%	16.7%	15.3%	13.9%	15.3%	17.4%
Voltage at Pmax(V mpp):	22.28	22.25	22.18	21.48	22.16	22.28
Current at Pmax(I mpp):	6.55	5.4	4.96	4.67	4.98	5.5
Open-circuit current(V oc):	27.1	26.4	26.67	25.5	26.67	26.98
Short-circuit current(I sc):	6.89	5.68	5.22	4.92	5.5	5.79
STC:	AM=1.5, 1000W/m ² , Cells Temperature 25°C					

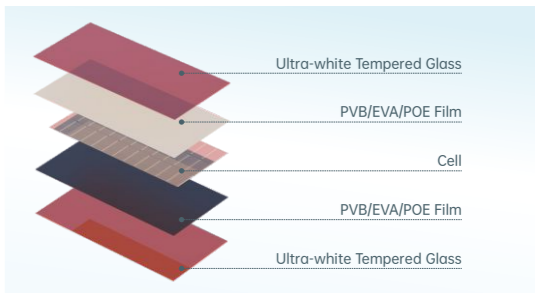
OPERATING CONDITIONS

Max. system voltage:	1500V
Max. series fuse rating:	15A
Operating temperature range:	-40°C~+85°C
Max. static load, front (e.g., snow):	5400Pa
Max. static load, back (e.g., wind):	2400Pa
Max. hailstone impact (diameter /velocity):	25mm/23m/s

THERMAL CHARACTERISTICS

Nominal operating cell temperature:	NOTC	°C	45±2
Temperature coefficient of Pmax :	Y	%/°C	-0.350
Temperature coefficient of Voc :	βve	%/°C	-0.275
Temperature coefficient of Isc :	abc	%/°C	+0.045

STRUCTURE



CONSTRUCTION



PERFORMANCE GRADE

Load grade:	2400Pa
Fireproofing grade:	ClassA
Anti-hail grade:	φ25mm/23m/s
Operating temperature:	-40°C~+85°C
Operating humidity:	0-85%