



January 2025

# KRITI PATHSHALA PROPOSAL

**PREPARED BY- ICHHE PURAN  
ORGANIZATION**



# Hello From

## Gargee Das Mondal

At Ichhe Puran, we believe that education is the most powerful tool to transform lives. With this vision, we started Kriti Pathshala—an initiative under the Deprived Initiative—to bring basic education to underprivileged children, especially those from families of street laborers and those without access to learning opportunities.

Every child deserves the right to dream, to learn, and to build a future filled with possibilities. Kriti Pathshala is not just a school; it is a beacon of hope, a space where children find guidance, care, and the opportunity to grow. We focus on foundational literacy, creative learning, and character-building, ensuring that these young minds get the support they need to thrive.

This journey would not be possible without the dedication of our volunteers, teachers, and supporters who have come together to make education accessible. Your encouragement and contributions fuel our mission, and we invite you to walk this path with us—to educate, empower, and uplift these children.

Let's continue to build a brighter future, one child at a time.

With gratitude,

*Gargee*

**Gargee Das Mondal**

Founder & Secretary, Ichhe Puran

# Table of Contains

1. *About The Company*
2. *Project Overview*
3. *Key barriers include*
4. *Core Components of the Kriti Pathshala Model*
5. *Implementation Strategy*
6. *Expected Outcomes*







# About The Organization

Introduction: In India, millions of children, especially those from marginalized families, continue to face barriers to accessing quality education. Despite significant strides in increasing school enrollment rates, a large number of children remain deprived of foundational learning due to factors such as poverty, lack of infrastructure, cultural biases, and inadequate support systems. The Kriti Pathshala aims to address these issues by creating a sustainable, community-driven, and inclusive educational initiative focused on providing foundational learning and creating pathways for a brighter future for these children. This model seeks to ensure that every child, irrespective of their socio-economic background, has equal opportunities to achieve their educational goals, fostering social inclusion, improving literacy rates, and nurturing holistic development

## About Our Team



**Rani Kumari**

Graphic designer and  
Storyteller



**Sourav Kumar**

Senior Coordinator



**Naitai Mondal**

Program Manager

# Project Overview

- **Name of the Project:** Kriti Pathshala
- **Target Group:** Children from marginalized and deprived families, particularly those who have limited access to formal schooling or are at risk of dropping out due to socio-economic constraints. Mainly they change their living location due to their parents' works that's why they don't get admission to any government school.
- **Objective:** To provide foundational learning, promote school enrollment, reduce dropout rates, and ensure equal educational opportunities for children from disadvantaged backgrounds.
- **Duration:** 6 months

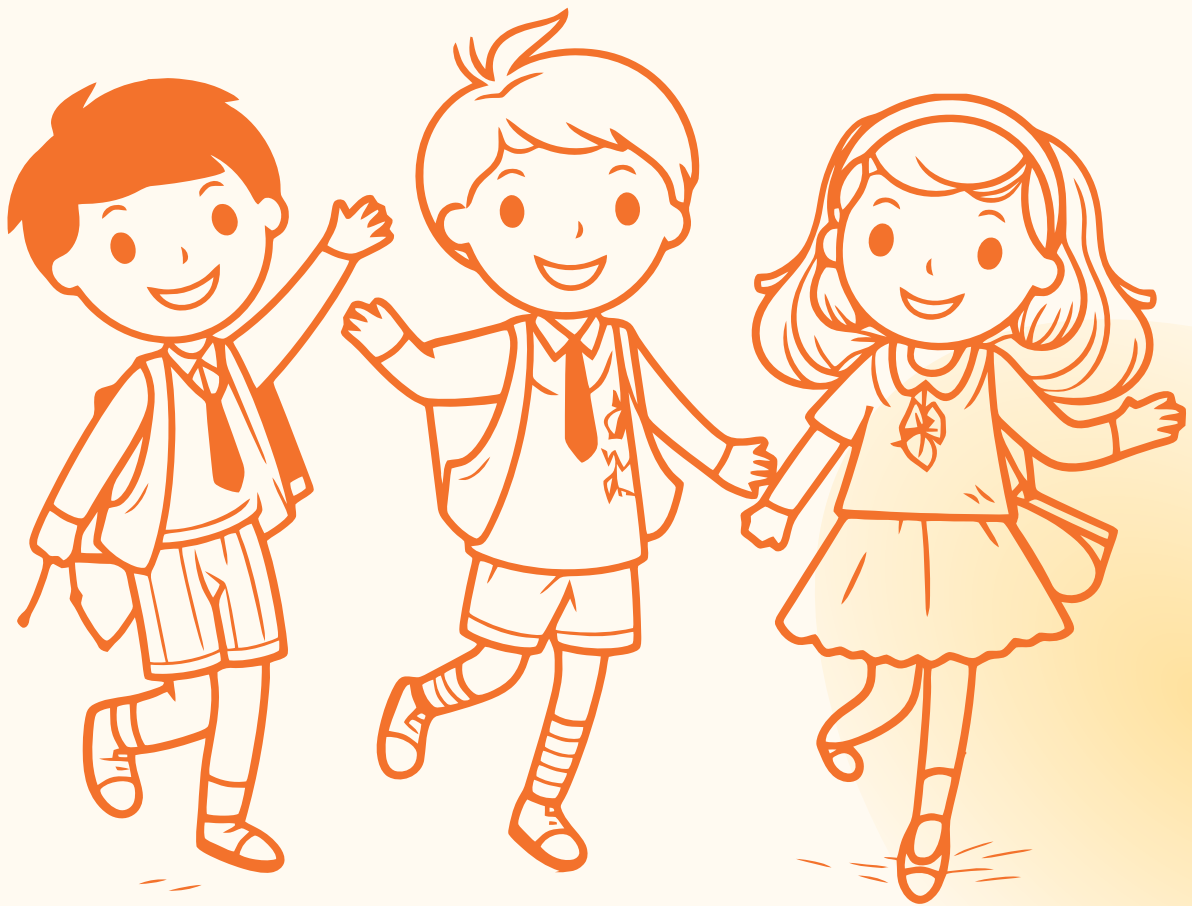




# OBJECTIVE

## *Kriti Pathshala: Bringing Education to Migrant Children, One Step at a Time.*

*This project aims to support children from migrant labor families who frequently relocate for work in brick factories and agricultural fields. Due to constant migration, these children miss out on formal education and remain unable to read or write. Ichhe Puraan envisions identifying such children and providing them with six months of basic education to spark their interest in learning, ensuring they get a chance to enroll in mainstream schools and continue their education.*



# Key barriers include:



**1. Financial Constraints:** Many children are forced to work or take care of family responsibilities instead of attending school.

**2. Lack of Infrastructure:** Rural and remote areas often lack adequate schools, teachers, and learning materials.

**3. Cultural and Social Biases:** Discrimination based on caste, gender, or disability often prevents children from accessing quality education.

**4. School Dropouts:** The pressure to contribute to family income and the lack of a supportive learning environment results in high dropout rates.



**Financial Constraints**



**Lack of Infrastructure**



**Cultural and Social Biases**



**School Dropouts:**

The Kriti Pathshala seeks to overcome these challenges by focusing on foundational literacy and numeracy, fostering inclusivity, and ensuring that children from these marginalized backgrounds can build a path toward a better future





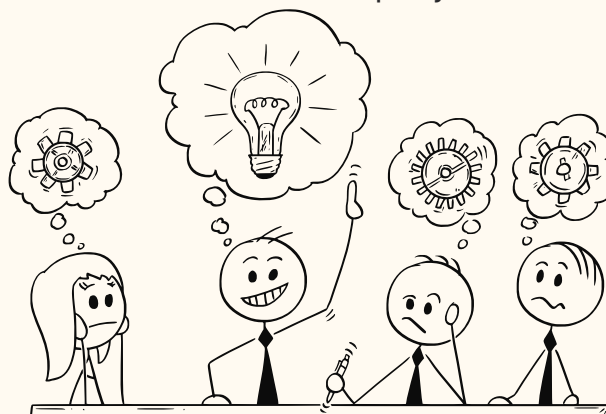
# Core Components of the Kriti Pathshala Model

## 1. Community-Based Learning Centers

1. **Location:** The learning centers will be set up in underserved communities, including remote villages, urban slums, and tribal areas.
2. **Infrastructure:** Each center will be equipped with basic learning tools, such as books, blackboards, and low-cost educational materials. The centers will be designed to create a safe and inclusive environment for learning.
3. **Infrastructure Support:** Partnering with local governments and NGOs to ensure that the centers have access to electricity, clean water, and sanitation facilities.

## 2. Holistic Curriculum Focused on Foundational Learning

1. **Curriculum Design:** The curriculum will be aligned with national educational standards while being flexible enough to cater to the diverse needs of deprived children. It will emphasize basic literacy (reading, writing, and numeracy) while also incorporating social-emotional learning, life skills, and environmental education.
2. **Language of Instruction:** Children will be taught in their mother tongue or a language they are familiar with, ensuring a smoother learning transition and better comprehension.
3. **Innovative Methods:** Interactive teaching methods, such as story-telling, play-based learning, and visual aids, will be employed to engage children and make learning enjoyable



### 3. Skilled and Trained Teachers

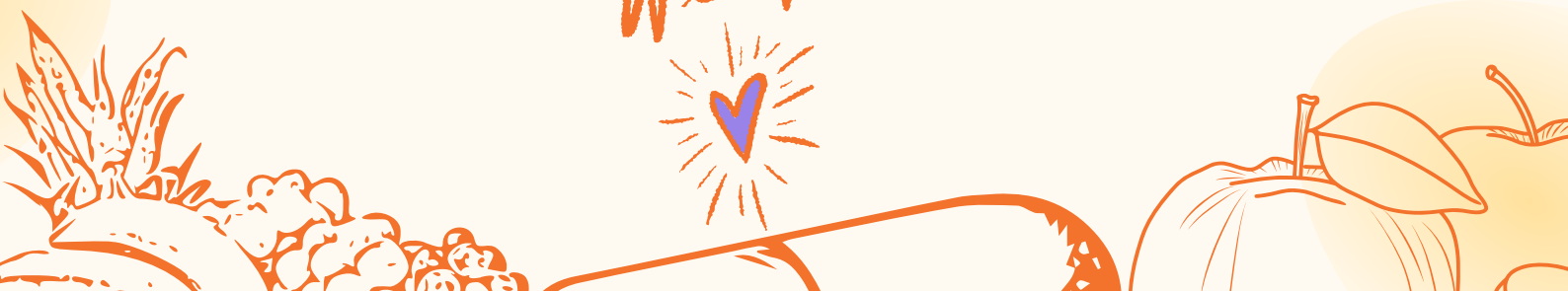
1. **Teacher Training:** Teachers will undergo specialized training programs focused on the needs of marginalized children, including strategies to address learning gaps, trauma-informed teaching, and inclusive education techniques.
2. **Local Community Engagement:** Where possible, local women and youth will be trained as teaching assistants or community educators, ensuring that the teaching staff is familiar with local customs and languages

### 4. Parental and Community Involvement

1. **Parent Awareness Programs:** Parents will be engaged through regular workshops and meetings to emphasize the importance of education and their role in supporting their children's learning.
2. **Community Support Systems:** Local leaders, elders, and other community members will be engaged to create a network of support around each child, ensuring that education is seen as a community responsibility

### 5. Focus on Health and Nutrition

1. **Mid-Day Meals:** Nutritional support in the form of mid-day meals will be provided to ensure children attend regularly and stay healthy.
2. **Health Screenings:** Regular health check-ups will be conducted to address any physical or mental health issues that may impede learning.



## 6. Flexible Learning and Bridge Programs

1. **Bridge Classes:** Special programs will be created for children who have missed years of formal education, allowing them to bridge the gap and catch up with their peers in mainstream schools.
2. **Non-Formal Education:** For children unable to attend school regularly due to family circumstances (e.g., child labor or caregiving), non-formal education programs will be introduced that are flexible and tailored to the needs of each child.

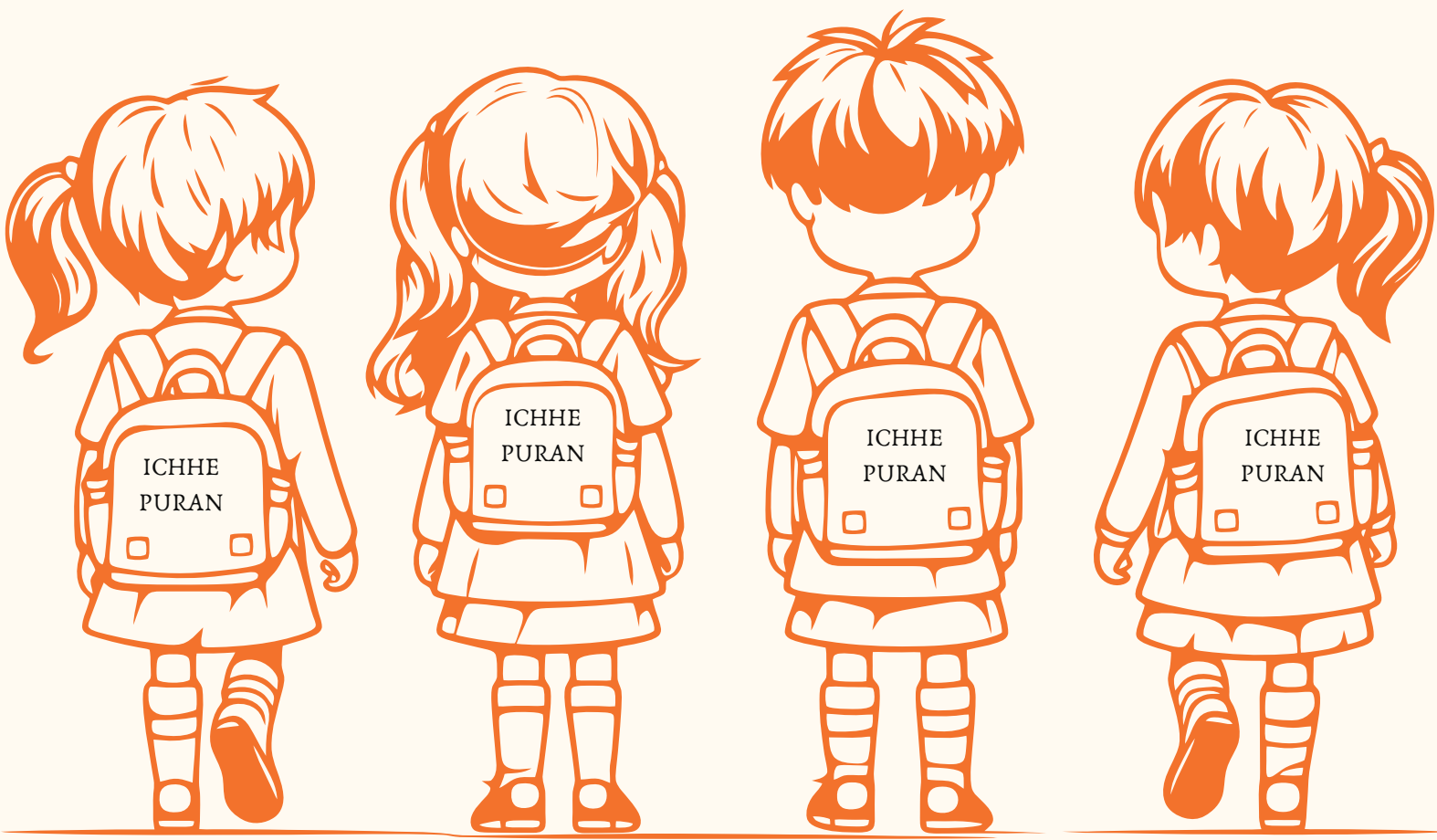


*Bridging Gaps, Building  
Futures Every Child .*

DESERVES A CHANCE TO LEARN



# *Implementation Strategy*



## **1. Partnerships with Local NGOs and Government**

1. Collaborate with local non-governmental organizations (NGOs), education authorities, and community groups to mobilize resources, provide expertise, and ensure that the program reaches those who need it most.

## **2. Capacity Building for Local Educators**

1. Conduct regular teacher training sessions and workshops to build the capacity of local educators, especially in remote and marginalized areas.
2. Create a pool of mentors who can offer guidance and support to teachers and children.

## **3. Monitoring and Evaluation**

1. A robust monitoring and evaluation framework will be implemented to track the progress of children in terms of literacy and numeracy skills, school enrollment, and retention rates.
2. Feedback from the community will be collected to continuously improve the program and address any emerging challenges.

## **4. Sustainability Plans**

1. Involve local communities in the running of the Pathshala centers to ensure long-term sustainability.
2. Leverage government schemes and funding opportunities to scale the model and ensure its continuation beyond the initial phases.
3. Establish a support network of alumni, donors, and stakeholders to ensure continuous resources and engagement.

# Expected Outcomes

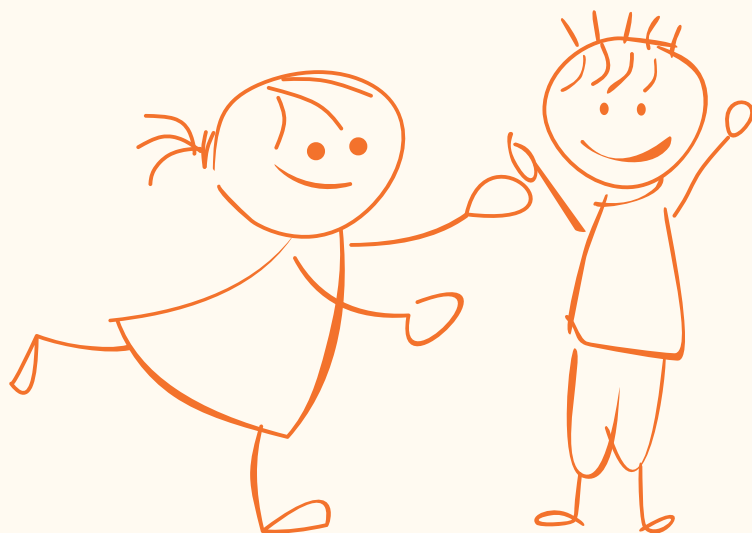
1. **Increased School Enrollment:** The model is expected to increase enrollment in formal schools, as children who have received foundational learning will be better equipped to transition to mainstream education.
2. **Improved Literacy and Numeracy:** Through targeted interventions, children will acquire essential skills in reading, writing, and mathematics.
3. **Reduced Dropout Rates:** By addressing the underlying causes of dropouts, such as financial hardship and lack of academic support, the program will contribute to reduced dropout rates among children from marginalized communities.
4. **Empowered Communities:** The project will build a culture of education in marginalized communities, where parents and local leaders actively participate in supporting the education of children.





# Conclusion

*The Kriti Pathshala Model is an inclusive and community-driven approach that aims to break the cycle of poverty and marginalization by providing quality, foundational education to children who need it the most. By addressing the barriers to education faced by children from disadvantaged backgrounds, this project seeks to create a level playing field where every child has an equal opportunity to fulfill their educational potential and pursue a brighter future. Through the collaborative efforts of educators, communities, and stakeholders, the Kriti Pathshala Model has the potential to make a transformative impact on the lives of the most vulnerable children in our society.*





**"Kriti Pathshala: Illuminating Young Minds,  
Bridging Gaps, Building Futures."**



**Contact no - +91 9147708511  
[www.ichhepuran.com](http://www.ichhepuran.com)**