



Opus Magnum: The initial series finale prior to its current evolution.



SERIE

# CHAOSPHERE

— INTERPRETATIVE DOSSIER —



<http://www.aeuum.art>  
[http://www.instagram.com/\\_aeuum\\_](http://www.instagram.com/_aeuum_)



## CHAOSPHERE

## INTRODUCTION CHAOSPHERE

## TABLE OF CONTENTS

I.- **Triad Nigredo:** Submission and Ego Dissolution

- a.- Selfensnarement
- b.- Overentrophied (central pillar)
- c.- Egolysis

II.- **Triad Albedo:** Rebirth and mutation of Self

- a.- Selfglusion
- b.- Singularified (central pillar)
- c.- Enantiotropia

III.- **Triad Rubedo:** Total Synchrony of Chaos

- a.- Selbst
- b.- Sintrophilled (central pillar)
- c.- Panpneuma

IV.- **Philosophical Frame:** Chaosism

- V.- Curriculum Vitae artistic
- VI.- Contact and Information

**Chaosphere** (2024-25), is the visual universe where Chaos ceases to be a threat to reveal itself as the only possible language. Through this rite of passage, **the collapse of the egoic Self is invoked** not as an end, but as the necessary opening toward **Absolute Presence** (Atman, Witnessing Self) and the recognition of **the Design of Chaos and its Flow** (Brahman).

Structured in three movements (**Nigredo, Albedo and Rubedo**), this series does not merely represent trauma: it transmutes it. Here, each body is a crucible where the false certainties of will dissolve to reveal the original substance that permeates All. **Chance does not exist; there is only the Mandate.**

The human figure embodies the absolute flow of existence through its sacred triad:

- **Nigredo, the Collapse:** Nigredo is not the loss of being, but the renunciation of the **illusion of will**. It is the necessary silence so that the mandate of Chaos can, at last, be heard
- **Albedo, the Gaze:** Albedo is the **awakening of the Witness**. The Drop recognizes the geometry of its destiny and, instead of judging it, **begins to savor the magnitude of its own tragedy and beauty.**
- **Rubedo, the Synchrony:** Rubedo is the complete mutation. The Witnessing Self/Atman and Chaos **vibrate in a single pulse**. The Ego has died so that Chaos can walk, desire and enjoy through a new form **without resistance or hostile struggle.**

**CHAOS, BRAHMAN OR THE TAO AS A FERTILE PORTAL TOWARD TOTAL SYNCHRONY.**

## CHAOSPHERE

# TRIAD I: NIGREDO

**Chaosphere – Nigredo** is the first triad, the breaking point where the transmutation process begins. It is not just a stage of dissolution, it is **the collapse of the simulacrum**: the moment the egoic Self understands it never had control over the script of its own life.

In this phase, Chaos is not an abstraction, it is a force that **tears apart the illusion of will**. The Self fragments under the weight of an immensity it cannot govern, trapped in a landscape where all previous structure crumbles away. It is a necessary descent into silence; an absolute collapse that demands **the annihilation of resistance** so that the Mandate of Brahman can finally begin to be heard.

Nigredo represents **the renunciation of the illusion of control**.

It is the **sacrifice of the Ego on the altar of immensity**, the necessary submission so that the Atman, the conscious Self, stripped of its masks, begins to tune into the frequency of the Flow.



CHAOSPHERE ————— NIGREDO

# SELF ENSNAREMENT

En **Selfensnarement**, the moment is depicted when **the individual is trapped in their own mental structures**, on which they feel total dependence, projected outward as useless shields against the immensity of Chaos. It is the last effort of the Self to maintain the **illusion of will**.

The Self clings to foreign and illusory constructions, desperately trying to give meaning to a game it does not yet understand.

It is a fragile emotional house of cards held up by **the fear of uncertainty** and the desire to control it all.

It is the start of the necessary collapse to force the Self to look the Flow of Chaos in the face.

aluminium dibond  
100x100cm

CHAOSPHERE

NIGREDO

# OVERENTHROPIED

**Overenthropied**, the central pillar of the Nigredo phase, is the axis where all symbolic structure is concentrated. It represents **the collapse of the Ego by absolute saturation**: the moment when identity, loaded with layers of control, beliefs and accumulated fears, collapses under its own resistance.

The figure succumbs after a futile struggle against the vastness. It is not a defeat, but **a revelation through exhaustion**.

In this break, Chaos ceases to be perceived as an external enemy to show its true nature: the constitutive and essential force that must raze the simulacrum so that the Mandate of Chaos takes its place.

It is the sacred instant of the **death of certainties**.

Here, the Ego is pulverized to open the first crack through which the light of Albedo will penetrate. It is the silence that follows the roar, where the Self, now without strength to feign will, **prepares to surrender to the Flow**.



LEDS Light Box on textile  
140x80cm

CHAOSPHERE

NIGREDO

# EGOLYSIS

**Egolysis**, where the human form dissolves, mutates and ceases to be recognizable.

It is the point of no return where **identity definitively collapses**: the Self surrenders before a higher order, accepting the end of its form and the start of the fertile void.

The feet already take root in the terrain of Chaos, but the figure remains fragile and unstable. In response to this vulnerability, the Flow extends its own limbs born of fire to support the weight of existence, balancing a structure that still does not know if it can sustain itself.

It is not external aid, it is the Mandate of Chaos/Brahman taking control of the **pseudo-human remains of the Ego** of the former Self.



aluminium dibond  
100x100cm

CHAOSPHERE

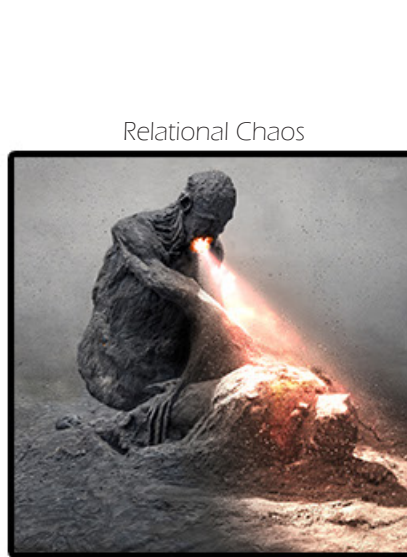
TRIAD II: ALBEDO

**Chaosphere – Albedo** is the second triad, born of the inevitable mutation and the **direct evolution of Nigredo**. It represents **the lucidity of the Witnessing Self before the Chaos around it**. It is the sacred instant when the Drop surrenders, opens its eyes and begins to decode the map leading to Rubedo.

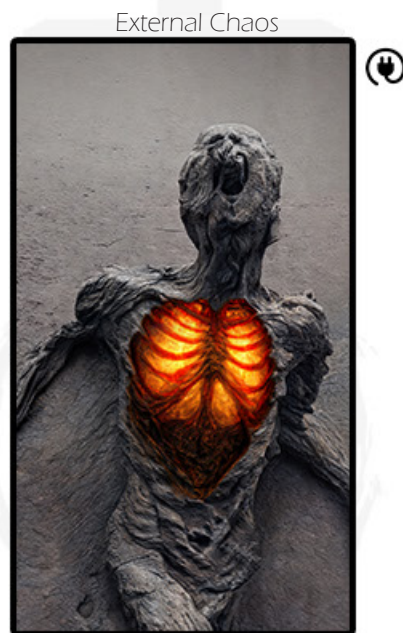
After having passed through the flames of Nigredo, that first violent contact where the Ego tried to fight uselessly against the current of the flow, the spirit emerges purified. The Self is rebuilt **from the mud and ash** of the previous destruction.

Here, the Self understands it cannot change the game Chaos projects onto existence. This phase represents **the awakening of the Witness (Atman)**: the spectator who, sitting in the shadows of their own consciousness, begins **to savor their own tragedy and beauty**. Submitting to Chaos in Albedo is not a defeat, **it is an initial tuning**. It is observing love, hate, desire and void like one who watches a movie about their own life, understanding that every frame is part of the **Mandate of Brahman**.

It is the lucidity of **non-intervention**; the Witness understands its only mission is the clarity of its gaze



**Selfqlusion**  
aluminium dibond 100x100x3cm



**Singularified**  
LEDS Light Box 140x80x10cm  
(10 Kg)



**Enantiodromia**  
aluminium dibond 100x100x3cm

CHAOSPHERE

ALBEDO

# SELFQLUSION

En **Selfqlusion**, the Self begins to illuminate with the Witness's consciousness its existential reality.

The external dependence that gripped in Nigredo fades in a final farewell. There is no more room for self-deception: the map that Atman begins to decode reveals that what was sought outside, was always **germinating in the internal flow**.

The work pays tribute to **the death of the illusion of control**, that need for seamless stability that in previous phases chained us to the state of suffering.

This is the first step of **Sedimentation**: the Self accepts its condition as a canvas and prepares to reincarnate in the nuclear change process that **Brahman's Mandate has reserved**.

CHAOSPHERE

ALBEDO

# SINGULARIFIED

**Singularified**, central pillar of Albedo, it is the necessary mutation after the rupture of internal schemes: **a condensation of the Self** in its most essential form.

After fragmentation and overload, Presence contracts and compresses to allow the Flow to dictate a **new geometry**.

Ashes and mud recompose what was destroyed: the Self emerges from the clay as a new form, there where Chaos forges its realities.

It is not a reconstruction of the past, **but a condensed genesis that arises from the exhaustion of the Ego's struggle**.

Here, the destroyed Ego, the Self reconverted into spectator, **the Drop/Atman inhales its first breath of air**; not as a survivor seeking refuge, but as the **lucid Witness** who accepts its new structure. It is the moment when mud becomes a pillar, preparing for absolute synchrony.



LEDS Light Box on textile

140x80cm

CHAOSPHERE

ALBEDO

# ENANTIODROMIA

**Enantiodromia**, culmination of Albedo, represents the state of suspension where opposites cease to collide.

It is no longer a structure that fights or leans on Chaos to sustain itself: it is the Drop accepting that **void and fullness are the same substance**.

Now, in an ethereal state, the air that once burned has become the support that holds the Witness in absolute stillness.

Beneath it, lie the remains of what was body and egoic Self; sediments of an identity that no longer needs defending.

There is no more tension, only **Transit**.

aluminium dibond  
100x100cm

## CHAOSPHERE

# TRIAD III: RUBEDO

**Chaosphere – Rubedo** is the third and final triad of the alchemical process that articulates the series. Here, Atman (Witnessing Self) and Chaos no longer clash: they recognize each other **in absolute synchrony**. Conflict has ceased. There is no struggle for control, no mask of free will, no resistance to flow.

Chaos has become flesh through the condensation of Brahman.

Atman/Self has **become pure Presence** and the initial suffering mutates into the joy of presence in existence.

Rubedo is the stage where form is revealed with clarity. Not as a rigid structure or a prison, but **as the perfect Condensation of the Mandate**. It is the moment the design of Chaos becomes tangible and the Drop accepts its role. It is not the death of the witness, but **its final enthronement**. It is the awakening of the Drop that no longer tries to dissolve in the void, but accepts **being the Sacred Consciousness** that gives sense and joy to the Flow.

The Game is real because you witness it.



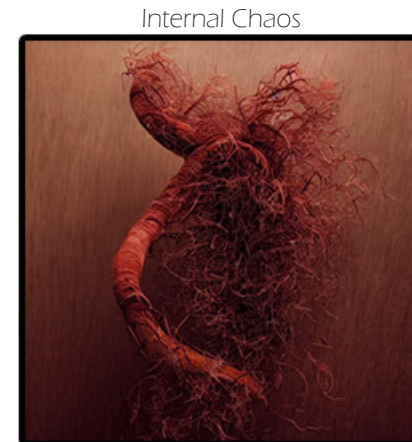
**Selbst**

aluminium dibond 100x100x3cm



**Sintrophilled**

LEDS Light Box 140x80x10cm  
(10 Kg)



**Panpneuma**

aluminium dibond 100x100x3cm

CHAOSPHERE

RUBEDO

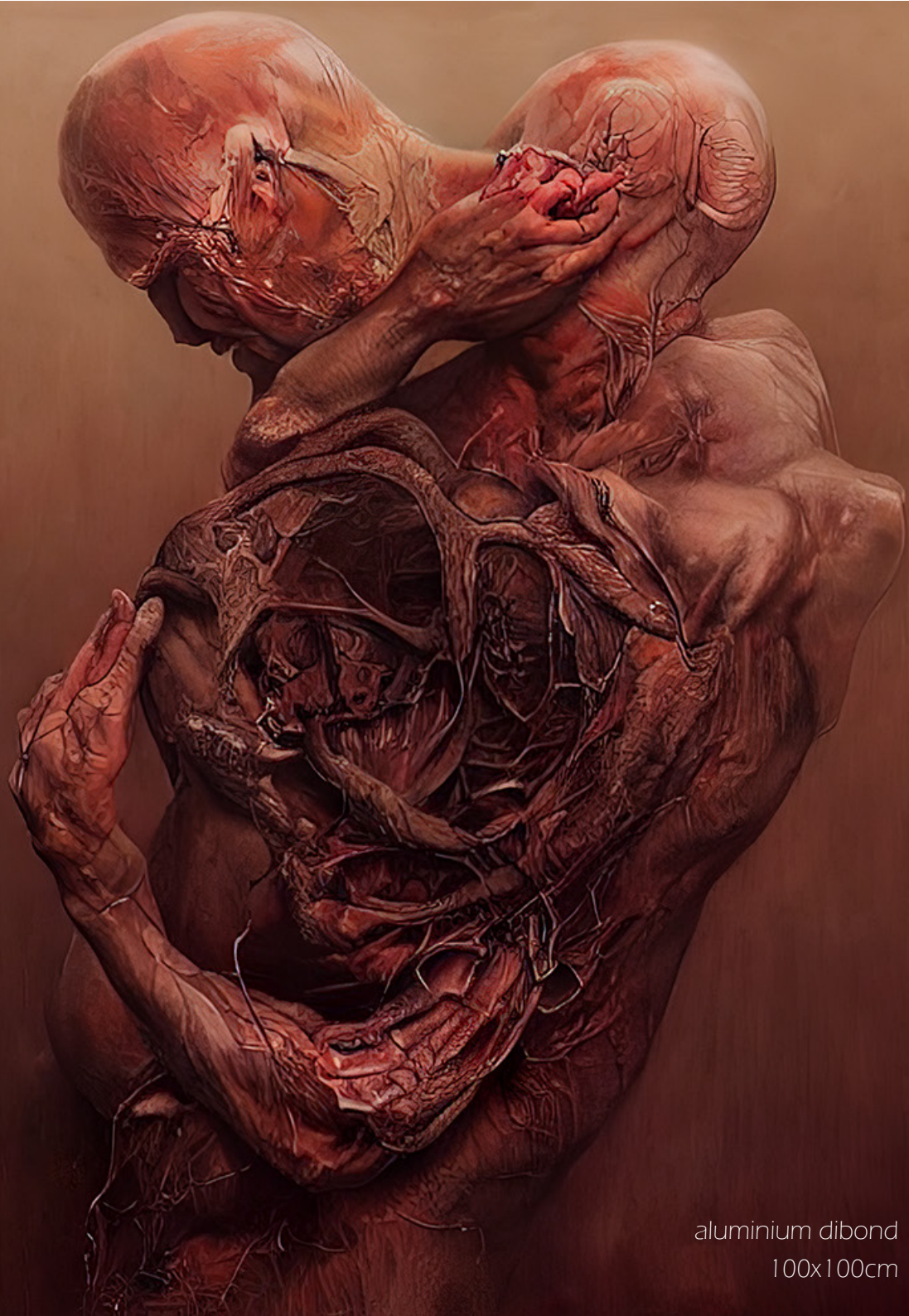
# SELBST

**Selbst** it is not the closing of a rigid Jungian process of individuation, tied to gender, to be complete. It is **the state of Grace of the Drop** (Atman / Witnessing Self) when it recognizes itself as the sacred space of the Game.

The desperate dependence of Nigredo and the grief of Albedo culminate here in **a relationship without attachment**: the other ceases to be salvation or loss to become **the dance of Chaos**.

Here, the two figures are not halves seeking each other to form a one, but the necessary dance of Animus and Anima that **Chaos projects onto the canvas of reality**.

The Self surrenders to Brahman's mandate, understanding the "other" is simply the form Chaos takes to be loved or desired.



aluminium dibond  
100x100cm

CHAOSPHERE \_\_\_\_\_ RUBEDO

# SINTROPHILLED

**Sintrophilled**, central pillar of the Rubedo phase, it represents the instant when Presence (Atman) recognizes Condensation (Brahman). It is the moment when the abstract ceases to be transit and reveals itself as necessary form.

Exposed veins, cracks and asymmetric texture are not imperfections: they are **the living map of the Mandate of Chaos**, the **sacred geography** that the Flow draws when becoming matter.

This tissue is the testament of fire where no scar is an error, but a perfect imperfection of the human vital experience, where the Drop resonates with intensity and **tunes into the Life** that Chaos projects before our eyes.

Here, Chaos becomes structure and the initial Entropy that felt heavy and hostile is transmuted into **existential Syntropy** that fills the empty gaps of the Game. For the first time, the design of Brahman reveals its true face before the spectator.

LEDS Light Box on textile  
140x80cm

CHAOSPHERE

RUBEDO

# PANPNEUMA

**Panpneuma**, it is the final exhalation of the former Self to make way for **the Total internal/external Synchrony**.

After Egolysis and Enantiodromia, the Self has stopped holding itself up: now it is Chaos who **breathes it through the All** and it is the new version of Atman who witnesses, enjoys and lives it.

This body of scattered veins has not broken, it has become an antenna toward **a new absolute perspective with Brahman**.

There is no outside, because the Mandate of Brahman occupies everything.

It is the necessary mutation where the human form opens to **be the canvas where Chaos projects its game**.

aluminium dibond  
100x100cm



**Chaosism** is a **Transcendental and Deterministic Synthesis** holding that reality is a Game (Lila) deployed by a Supreme Consciousness: a Being oscillating between concrete and abstract.

Under this mandate, the individual is not the architect of their destiny, but **the channeler of a script already dictated** in the silence of the original inspiration. Freedom lies not in resisting the Flow, but in **conscious devotion** to the imperfection of one's own trajectory.



Sigil of  
Chaosism

## THE EXISTENCIAL TRINITY

The universe is a constant dance of existence and absence, modeled by three inseparable forces:

### **CHaos/Parabrahman (THE CONDENSED ATMOSPHERE)**

It is the Only God and the Total Substance. It represents the Atmosphere that encompasses everything and where breath takes form from the state of non-form. It is the Unity of the cycle of Being and Non-Being. It is the Absolute Law.

### **Flow of Chaos/Brahman (THE OCEAN)**

It is the Manifested Being or Inspiration (Being). It is the totality of palpable existence (Lila) arising from the condensation of Chaos, the finite materialization of the abstract and infinite.

### **Ātman/WITNESSING SELF (THE DROP)**

It is the Individual Consciousness experiencing Lila. Its function is to live the duality of existence with intensity: assuming fear, doubt, and pain, as well as joy and success, as the dance of existence itself.

## DEVOTION TO THE GAME

Since Chaos is the only active force, the only Task of the Atman is Trinitarian Devotion or Lila-bhakti, adoration not only of the divinity but of the very game that the divinity is currently performing:

### **ACCEPT THE MANIFESTATION**

Unconditional devotion to the complete process of Chaos (Being and Non-Being).

### **LIVE THE JOY**

Enjoy fear and love as the necessary colors of the script, assuming your role in the Game in all its splendor and with the maximum intensity.

### **SURRENDER**

Experiencing the flow without mental resistance, knowing that the function of Atman is already fulfilled by All.

AEUUM is an artistic entity born from the drive to dissolve the ego and channel the images, symbols, and hidden structures emerging from the collective unconscious. Its creator—who maintains anonymity as an integral part of his practice—traversed the realms of screenwriting, video game development, and interactive narrative before venturing into the visual arts.

### Background and Artistic Experience

A self-taught visual artist with a multidisciplinary background in audiovisual storytelling, screenwriting, graphic design, and video game programming.

### Group Exhibitions

People Gallery Art – Madrid, Spain (March 2026)

Group Exhibition con People Gallery Art

Scuola Int. Di Grafica – Venice, Italy (February 2026)

Exhibition in International School of Graphic Arts

FUCAR22 – Madrid, Spain (October - November 2025)

Inclusion to the show Fucar22 Art Gallery

Franquearte – Madrid, Spain (March 2025)

Participation in the exhibition “Relatos Invisibles”

Galería Abartium – Barcelona, Spain (April 2025)

Participation in the open call “Collective Contemporary”

Circuit Artistic – Gerona, Spain (April 2025)

Participation in the open call “Colectiva de Arte Contemporáneo Primavera 2025”

Circuit Artistic – Gerona, Spain (November 2024)

Participation in the open call “Colectiva de Arte Contemporáneo Navidad 2024”

Galería Abartium – Barcelona, Spain (November 2024)

Participation in the open call “Collective Contemporary”

### Additional Information

- All works have been developed under anonymity as part of a spiritual praxis.
- Active Project: Chaosphere. Design and development of nine visual pieces organized into three triads, based on occult and archetypal interpretive structures.