

ALCOHOL EDUCATION PROGRAM FOR MINORS



STUDENT GUIDE

Texas Department of Licensing and Regulation

Table of Contents

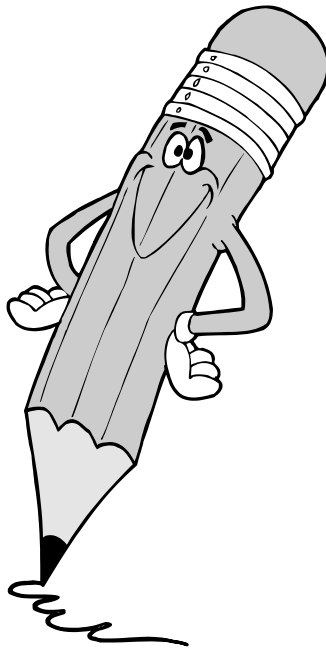
Introduction.....	2
Topic One-Social Values	3
Topic Two-Advertising and the Alcohol Industry.....	4
Topic Three-Alcohol and Young People	5
Topic Four-Alcohol and Accidents.....	7
Topic Five-Laws Relating to Young People and Alcohol.....	8
Topic Six-Youth Drinking Patterns and Problems	9
Topic Seven-Decision Making	10

Student Guide

Alcohol Education for Minors

Introduction

This guide is designed to be an integral part of this course. It will enable each person to participate during the program and also will serve as a reference to use after completing the course. Participants should use the guide to take notes and be better prepared to successfully complete the final exam. Good luck during the course and for the future.



TOPIC ONE

Social Values

- 1) Give three ways the word “drink” often is used to mean “drink alcohol.”

- 2) List four reasons people drink alcoholic beverages.

- 3) List four reasons people do not drink alcoholic beverages.

- 4) What are the three social standards of alcohol consumption discussed in this course?



TOPIC TWO

Advertising and the Alcohol Industry

- 1) Give three purposes of alcohol advertising.

- 2) Which type of alcoholic beverage tends to be most popular in Texas?

- 3) List three different alcohol advertising themes.

- 4) Give three possible corrective measures dealing with alcohol ads. Which do you feel would be most effective? Why?

TOPIC THREE

Alcohol and Young People

- 1) Give two basic effects of alcohol on humans.

- 2) Which part of the brain is affected first by alcohol?

- 3) Does alcohol affect decision making? Give two examples.

- 4) How does alcohol affect a person's inhibitions?

- 5) List four effects of alcohol on vision.

Why are these effects so important?





6) Rank the following on the amount of pure alcohol: (1 being the highest)

- | | |
|------------------------------|------------|
| _____ 12 oz. Cooler | 1=MOST |
| _____ 1 oz. shot of 80 proof | 2=2nd MOST |
| _____ 12 oz. regular beer | 3=LEAST |

Why is this information important?

7) Give four basic factors which influence a person's B.A.C.

8) At what rate does the human body normally remove alcohol from the system?

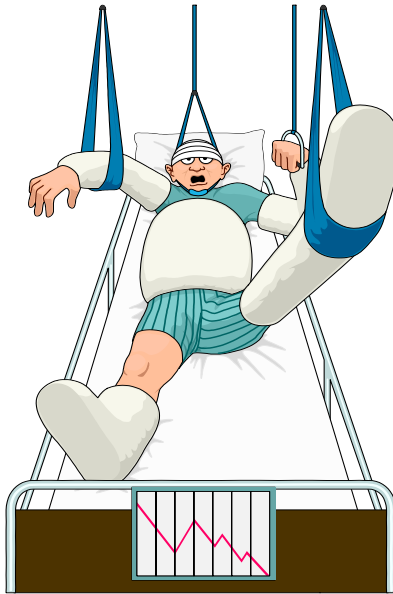


TOPIC F

Alcohol and Accidents

- 1) Is the 15-20 year old group more or less likely to be involved in an alcohol related traffic death than older drivers? Why?

- 2) How does B.A.C. relate to the risk of a fatal traffic accident? What age group is at greatest risk?



- 3) How has raising the drinking age affected driver involvement in fatal nighttime crashes?

- 4) What types of accidents, other than traffic, are related to alcohol use?

TOPIC FIVE

Laws Relating to Young People and Alcohol

- 1) Give three examples of improper use of a driver's license.

- 2) What are the second offense penalties for Minor in Possession?

- 3) What constitutes DUI by a minor?

- 4) Give the penalties for DUI by minor.

- 5) ALR means _____

- 6) The Implied Consent Law refers to _____ a breath or blood test.

- 7) Give two definitions of intoxication in Texas.

- 8) The fine for the first offense DWI in Texas is: _____



TOPIC SIX

Youth Drinking Patterns and Problems

- 1) Give four stages of alcohol use.



- 2) Give any three parts of the definition of alcoholism.

- 3) Provide eight symptoms of alcohol abuse related to youth.



TOPIC SEVEN

Decision Making

- 1) List four possible gains from drinking alcoholic beverages.

- 2) List four possible losses from drinking alcoholic beverages.

- 3) For you, are the possible gains or possible losses from drinking alcoholic beverages the greatest? Why?

