



PDQ GLOBAL 'T' System

EMERGENCY SOCIAL HOUSING ACCOMMODATION SOLUTIONS

Solutions to Problems





PDQ GLOBAL - the one-stop solution to problems

Introduction

PDQ Global, offers manufacturing for our modular structures, from our state-of-the-art facility based in Pangyu, China, who are the leaders of China's Light Steel Building Industry. Manufacturing energy-saving buildings, we are committed to the research & development, application and popularisation of such structures on a global scale. Our manufacturing facilities are spread over 16 sites including ones at Sanya, Changsha, Wuhan, Nanchang, Shanghai, Chengdu and Changqing, with a total manufacturing space of 220,000m² and an annual production capacity of 10.92 million square meters of modular structures.

We have assembled a group of high quality trained professional technicians and on-site installation teams, providing customers with a full and complete service from project conception, design, manufacture and construction, to final assembly and internal fixtures and decoration.

Supplying fast build and affordable solutions, that include prefabricated houses, light steel villas, *container houses*, office blocks, schools, hospitals, factories, warehouses, portable toilets & security staff boxes. PDQ Global are committed to providing quality and efficient pre and after sale services, enhancing our reputation with our many customers around the World. These include territories such as Angola, Ethiopia, Nigeria, South Africa, Somalia, Morocco, Russia, Kyrgyzstan, United Arab Emirates, Saudi Arabia, Iran, Iraq, Maldives, Vietnam, United States of America, Malaysia, Peru etc with usage of our solutions constantly expanding to many other parts of the globe. We ensure through our 25 years of experience building these structures, to offer our customers the most up-to-date, and effective solutions to their requirements.



★ Our Wuhan hospital facility, constructed at the outbreak of Covid-19 in Wuhan, China. A 1,000 bed facility built, ready for patient intake, within 10 days and the second in Shenzhen, 1,500 beds and completed in 20 days.

Emergency Social Housing

PDQ Global, aware of the shortage issues facing the world regarding the accommodation of people seeking housing solutions, have developed the 'T' Construction System, supplied from our China manufacturing facility and offering safe, clean, comfortable living and aiding the solving of this current and ongoing crisis.

Thousands of families globally, who cannot afford a home, have been left in need of temporary accommodation, and have raised fears the situation could push them into poverty and bankruptcy. In many areas, house prices have almost doubled over the past few years and private rents have also increased.

Over recent years there has been a severe lack of social house building, leaving families living in temporary accommodation. Not only do people not have the stability and security of a home, but they're often left to cope in just one room, with no facilities to cook meals or do washing.

The PDQ Global System is constructed using the highest quality materials, adhering to all relevant local construction regulations and literally 100's of square meters of buildings can be erected by very few workers in extremely short time frames, enabling the internal fixtures and fittings to be rapidly installed, allowing these sites to be ready and available for occupation within weeks, rather than months or even years, as with current 'traditional' building systems. For the 'T' System, no heavy lifting equipment is required to construct these light but very strong steel framed buildings. Our monthly factory production output rate is 100,000 m² and each 40' shipping container can transport 200 square meters of buildings.

We are able to address and resolve many of the serious concerns involving accommodation availability and living conditions, in both a fast and cost effective manner.

Accommodation Layouts



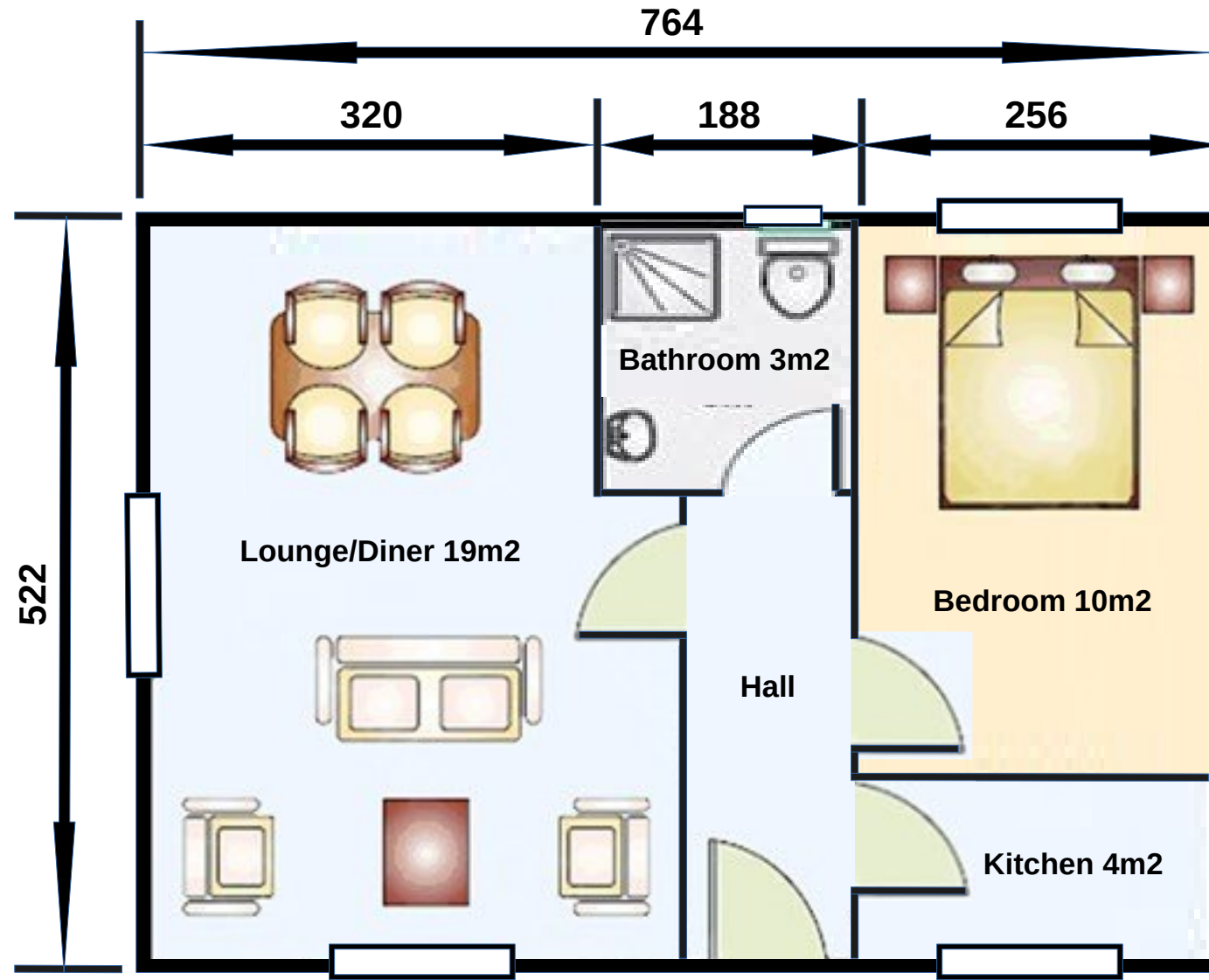
53m2 – 2 x Bedroom Apartment – Layout Example

53m2 – 2 Bedroom Apartment



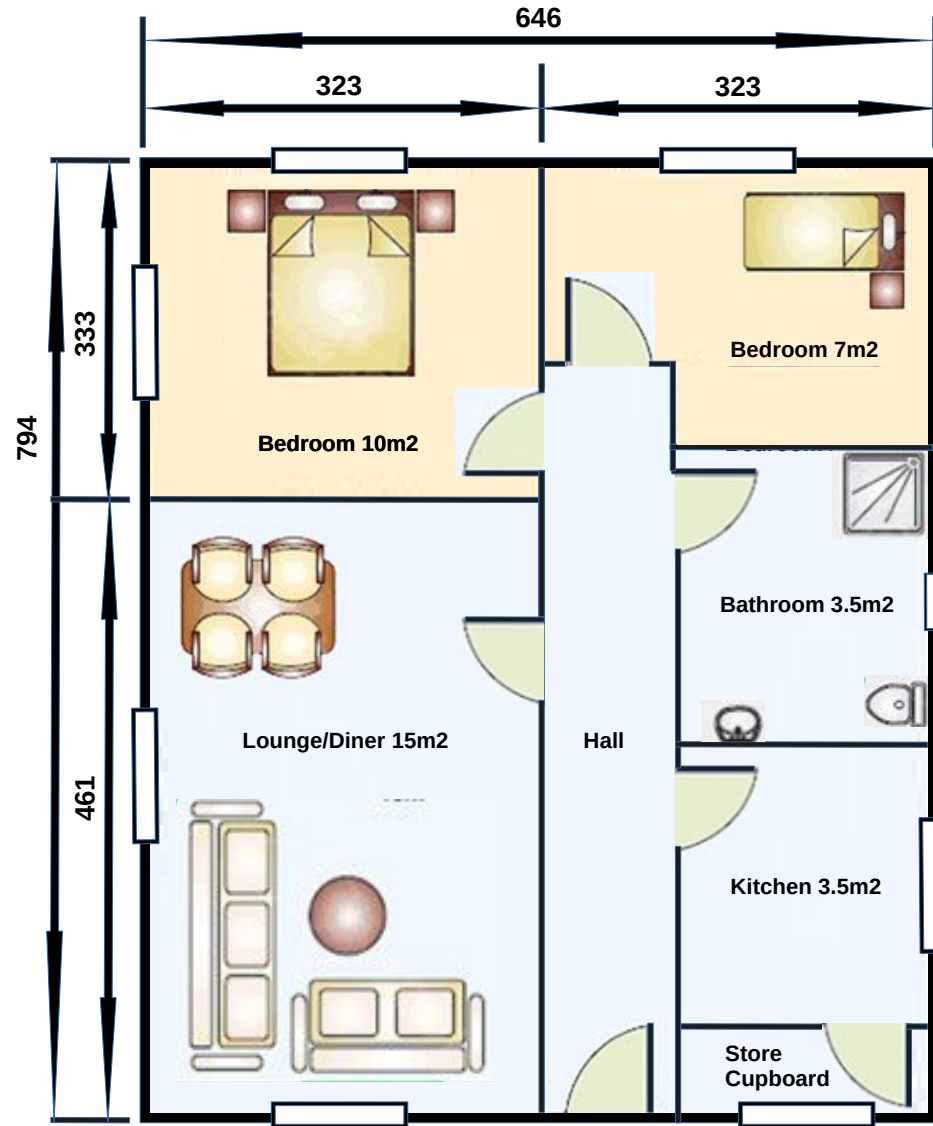
53m2 – 2 x Bedroom Apartment – Layout Example

40m² – 1 Bedroom Apartment



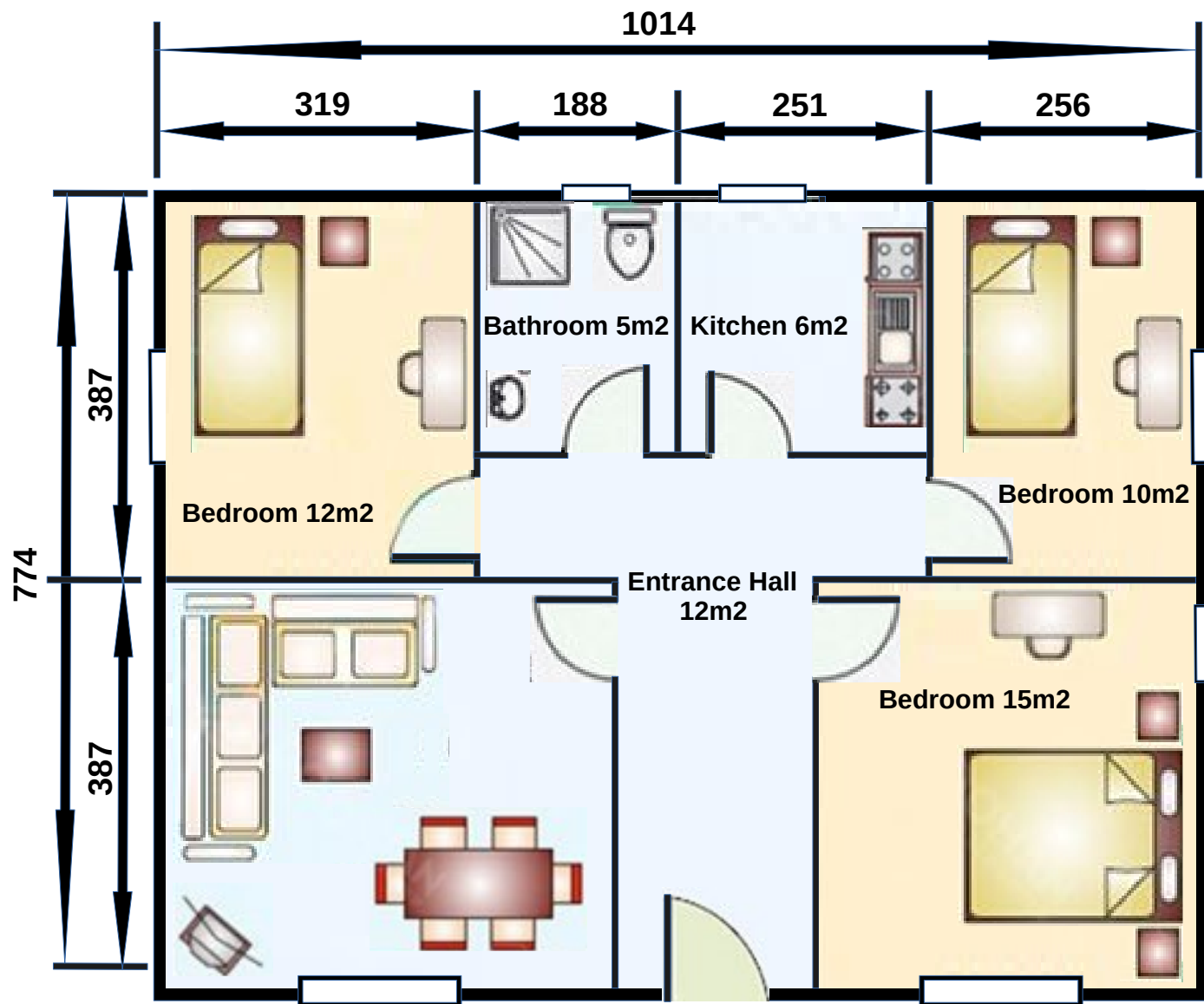
1 x Double Bedroom, 1 Lounge/Diner, 1 x Kitchen, 1 X Bathroom, 1 x Hallway

53m² – 2 Bedroom Apartment



1 x Double Bedroom, 1 x Single Bedroom, 1 Lounge/Diner, 1 x Kitchen, 1 X Bathroom, 1 x Hallway

81m2 – 3 Bedroom Apartment



2 x Double Bedrooms, 1 x Single Bedroom, 1 Lounge/Diner, 1 x Kitchen, 1 X Bathroom, 1 x Hallway

Furnishing an Apartment



Flat pack items as featured items can be purchased from our partner company LEAF Furniture Limited

Accommodation

Each separate accommodation block consists of a mixture of 1, 2 and 3 bedroom apartments, calmly decorated and all with a comfortable lounge, kitchen, dining area and fully fitted kitchen, accessible from a 1 meter wide internal corridor, internal staircases and externally situated fire escapes to the first floor. Built to locally required thermal and sound insulation regulations and using fire retardant materials.

The 1 x Bedroom is 40m² and consists of 1 x Lounge/Diner, 1 x Kitchen, 1 X Double Bedroom and 1 x Bathroom

The 2 x Bedroom is 53m² and consists of 1 x Lounge/Diner, 1 x Kitchen, 1 X Double and 1 Single Bedroom and 1 x Bathroom

The 3 x Bedroom is 81m² and consists of 1 x Lounge/Diner, 1 x Kitchen, 2 X Double and 1 Single Bedroom and 1 x Bathroom

Disabled rooms

These rooms are with Wheelchair accessible doors. Fitted for single or two person occupancy, these rooms will include a Bathroom built as a Wet room, with floor level Shower, Wheelchair Height Basin that can be raised or lowered, and a Wheelchair accessible toilet with push up bars.

Laundry room

On each accommodation floor, the room is a 4 m x 5m (20m) with 4 washing machines and 4 Dryers

'T' System Specification



Item No: T02-SHA

Area: Ground Floor 1,044m², First Floor 1,044m²

Total Area: 2.088m²

MOQ: 100m²

Country of Origin: China

Long Lifespan and Reusable

Single or Double Storey Available

Colours: Custom Colours Available

Shipping Port: Guangzhou/Shenzhen

Fast Construction and Ease of Installation

Excellent Heat Insulation, Waterproof & Fireproof

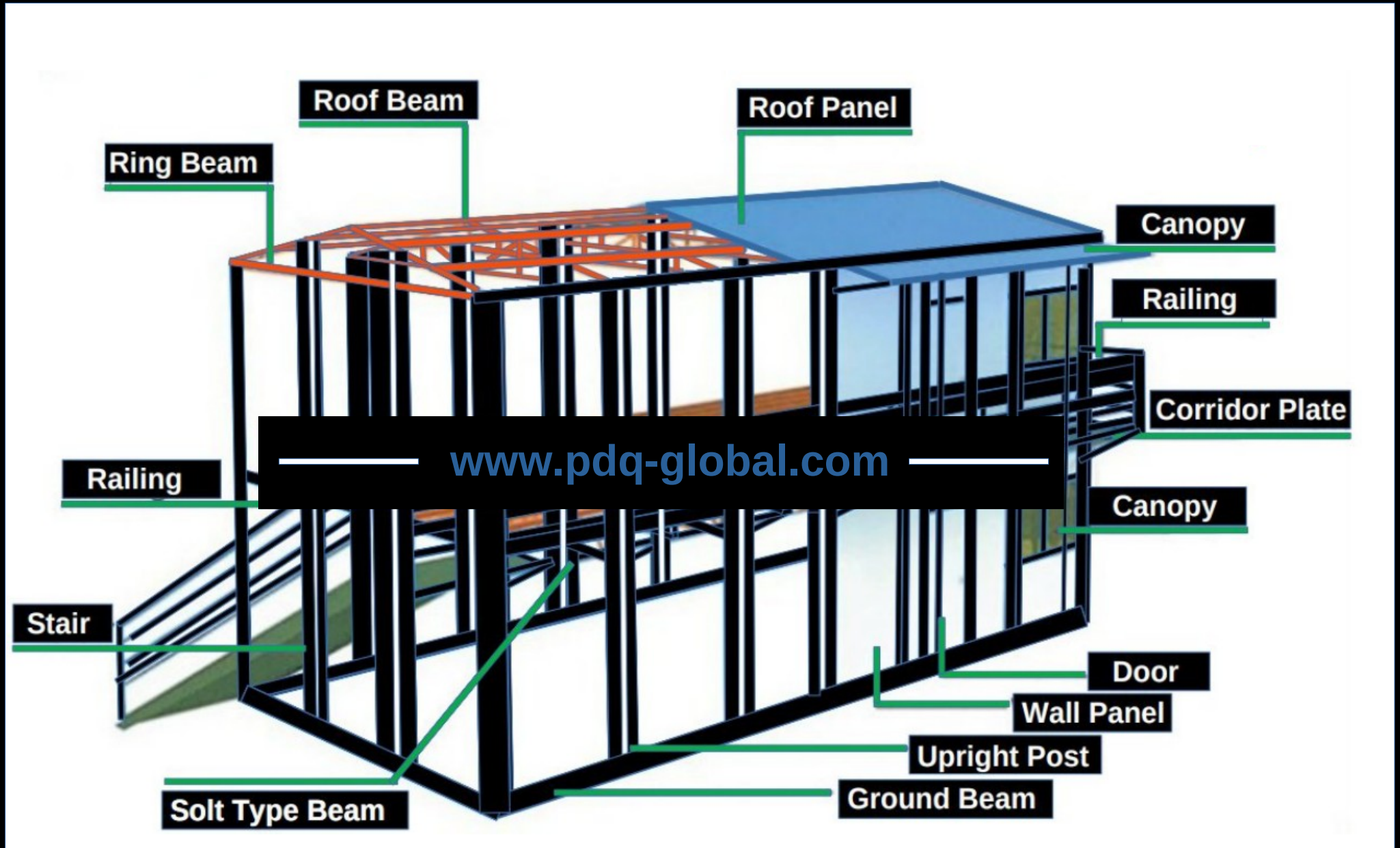
Lead Time: 15 -25 Days following receipt of P/O & Deposit Payment

Eco Friendly Materials Used for Construction & no on-site waste caused

Flexible Internal Layouts Available to Satisfy Differing Situation Requirements

<u>Item No:</u>	<u>Component</u>	<u>Specification</u>
	Wall Panel	50 Double Colour-Coated Steel <u>EPS</u> Sandwich Board (Steel: 0.286mm, <u>EPS</u> Density: 10kg)
	Roof Panel	50 Double Colour-Coated Steel <u>EPS</u> Sandwich Board (Steel: 0.286mm, <u>EPS</u> Density: 10kg) – Blue, White or Red
	Partition Wall	50 Double Colour-Coated Steel <u>EPS</u> Sandwich Board (Steel: 0.286mm, <u>EPS</u> Density: 10kg) + Aluminium Slot and Accessories
	Column	Double C-shaped Steel. Size: 80*40*1.8mm
	Roof Beam	C-shaped Steel. Size: 80*40*1.8mm & 50*40*1.8mm
	Tie Rod	CP8
	Ground Beam	Double C-shaped Steel. Size: 80*40*1.6mm
	Round Beam	Double C-shaped Steel. Size: 80*40*1.6mm
	Roof <u>Purlin</u>	Galvanized Angle Steel: 1.5m
	Door	50mm Double Colour-Coated Steel <u>EPS</u> Sandwich Door Size: 800*2,000mm
	Window	Plastic & Steel Window: 1,740*925mm

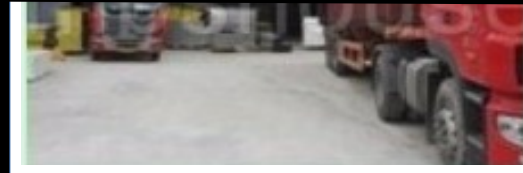
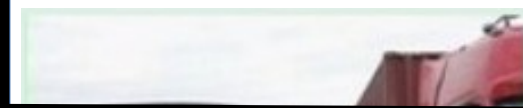
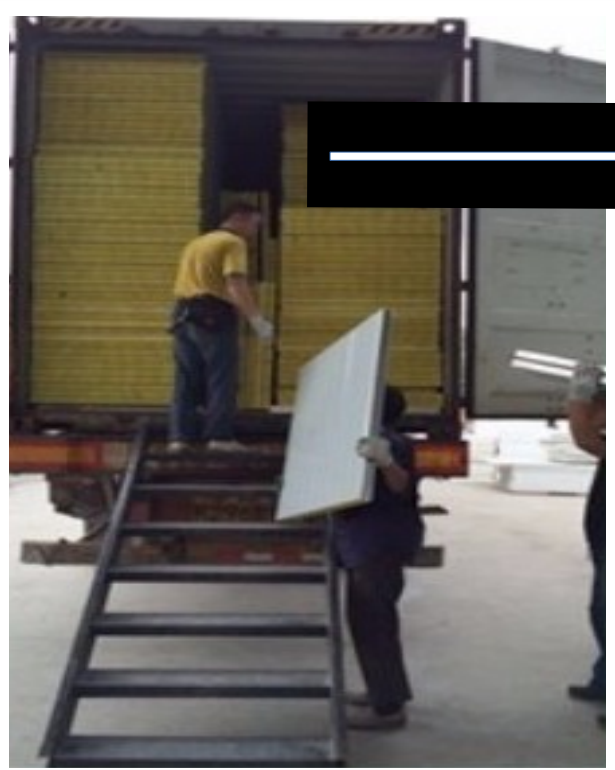
The Construction





PDQ GLOBAL - the one-stop solution to problems

Packing & Shipping



www.pdq-global.com

1 x 40' HQ = 200m2 of 'T' System

-

Production Rate: 100,000m2 every 25 Days

Important Points

The PDQ Global team, are always on hand to make the selection of which structure best suits a customer's particular requirements for any project and in order for us to facilitate speedy and smooth progress, we need to address the points as listed below.

General Issues

- Landscaping issues and aesthetic appeal on site.
- Is the building selected the ideal one for the proposed use by the customer.
- Is there a possibility that the customer will wish to add to the PDQ structure in the future?
- What is the proposed site layout with regard to existing buildings and finishes required to match other buildings on the site.
- Precise details of customers required layout and exterior and interior finish of PDQ structure with illustrative photos from customer of finishes if possible.

Access to Build Site

- Access for container lorry to site/or close to site.
- Consider possibility of over-lift of the PDQ structure to the site.
- Distance from proposed site of the PDQ structure to the access road.
- If the proposed site is to the rear of any building, is there access to the site, and what is the width/height of that access.
- Possible Health and Safety Issues/Hazards – Overhead power cables/Public safety concerns/Local Hazards/ Traffic conditions/Security on site.

Utilities

- Availability of access to deliver/install septic tank
- Local Authority restrictions in connecting to utilities.
- Position of possible sewer connection/site for septic tank
- Quality of supply (Water pressure/Electricity Ampere's available).
- Possibility of customer wanting to enlarge the supplied PDQ structure in the future.
- Location of mains water/electricity/sewage and distance from the PDQ structure proposed final site.

Contact Us:



Peter Hurst

Mobile: + 44 (0) 7743 948674 (UK)

Whatsapp: + 852 93073664 (Hong Kong)

Email: peterhurstpdq@gmail.com

**Hong Kong Office: UNITS 2804-7. 28th FLOOR, MAN YEE BUILDING,
68 DES VOEUX ROAD CENTRAL, HONG KONG.**

**Head Office: WICKHAMS CAY II, ROAD TOWN, TORTOLA
VG1110, BRITISH VIRGIN ISLANDS.**

[WWW.PDQ-GLOBAL.COM](http://www.pdq-global.com)

