



PDQ Global - 'K' & 'T' System & Steel Series Structures

INTRODUCTION

PDQ Global is the leader of China's Light Steel Building Industry. Producing energy saving structure buildings, we are devoted to the research & development, application & popularisation of such building on a global scale.

With a hard working team and state of the art working environment. Our structures offer turnkey solutions, with attractive exterior designs and finishes and practical interiors. A one stop solution from design to supply.

Our company is committed to providing high-class quality and efficient pre and after sale services, enhancing our reputation with our many customers around the world, including those in Angola, Ethiopia, Nigeria, South Africa, Somalia, Morocco, Russia, Kyrgyzstan, United Arab Emirates, Saudi Arabia, Iran, Iraq, Peru, Maldives, Vietnam, United States of America, Malaysia etc.

We have assembled a team of high quality trained professional technicians and on-site installation teams, that provides customers with a full, complete service from project concept to design, manufacture, construction to final installation. We ensure through our 25 years of experience building these structures, to offer our customers the most scientific and effective solutions to their requirements.

PDQ Global always react to market developments and employ the latest science and technology innovations in our structures. With multi patents and ISO9001.2000 (quality management system), ISO14001.2004 (environmental management system), and GB/T28001-2001 (occupational health & safety management system) certifications, all issued.

Our integrated housing products are long lasting, with ease of installation, and moreover, they're safe, strong, and reusable ('K' system) and recyclable.

Our 'K' system products are used for temporary construction workers sites, mining camps, military barracks, and government resettlement projects, temporary municipal housing, tourism and vacations, large-scale public events and temporary structures for various commercial activities, etc.

We offer several production lines, spray coating workshops & light steel production lines. With in house advanced manufacturing equipment, including composite board machines, press machines and electric welding machines, etc. With a complete product chain of independent R&D, design, production & sales services, and providing customers with one-stop overall solutions

With ingenuity, PDQ stays true to its original aspirations, with professionalism and focuses on leading the present and future of the prefabricated housing and structures market.

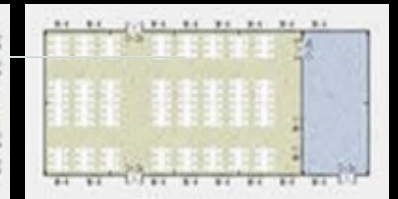
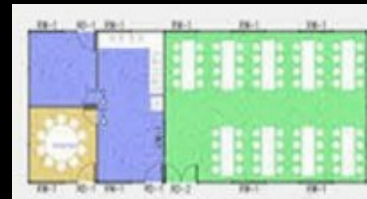
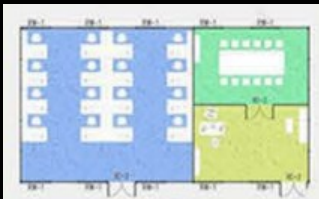
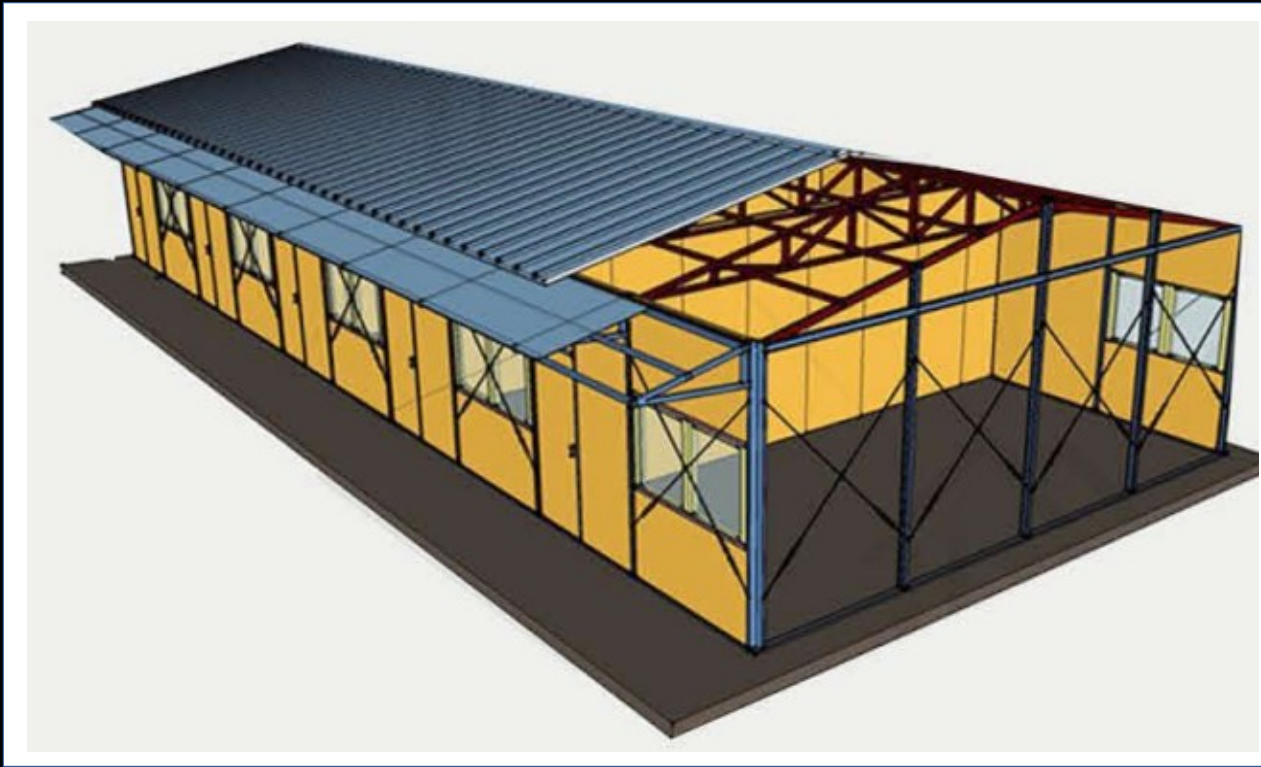
Strengths & Advantages

- 1 The core backbone in the field of post-disaster reconstruction around the world
- 2 The participant and practitioner of the national strategy of ‘the Belt and Road Initiatives’.
- 3 The leading supplier of permanent and temporary prefabricated buildings of Australia, Europe, Japan, South East Asia and African countries.
- 4 The primary contractor of China State Construction, China Railway Construction, China Resources, China Merchants and many other well-known enterprise companies.
- 5 The leading partner of the Commerce Department, Civil Affairs Department, General Logistics Department, UNDRO and etc. referring prefabricated building .

Prefabricated K House

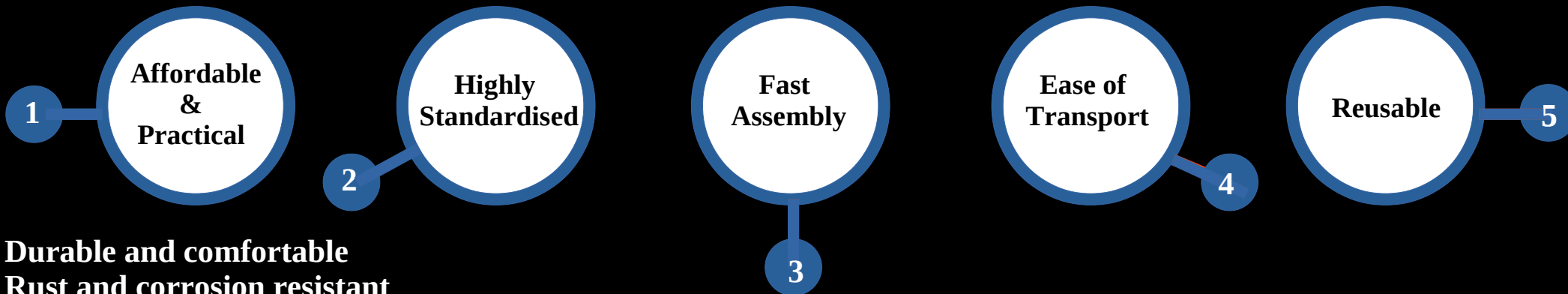


K House Construction



Using the advantages of the strength of both the Sandwich Walls and Roofing Panels, the light angled pitched roof modular buildings, are mobile and can be assembled and disassembled multiple times. Erected using a system of nails, steel bolts & self-tapping screws, these pre-fabricated buildings are constructed of a light steel frame & sandwich panel walls, PU tiles & roof systems. With easy transportation and installation, these buildings are a simple & cost effective solution to many social housing, refugee and industrial situations.

Product Features



Durable and comfortable
Rust and corrosion resistant
Easy to install and time-saving
100% water proof & wind resistant & earth resistant
Compared with traditional construction cost savings of more than 50%

Size : L5900*W2250*H2400mm

Outer Material: Galvanized steel frame

Wall Material: 16mm metal carved board(exterior)+16mm metal carved board(inner)

Glass Material: 6mm+12A+6mm hollow double-layer toughened sound insulation glass

Floor Material: CEP+18mm fiber cement board+PVC flooring

Sound Insulation: Level 10 ≤ 45 dB

Waterproof Grade: Grade 8

Floor Load Capacity: 350-400kg/ m²

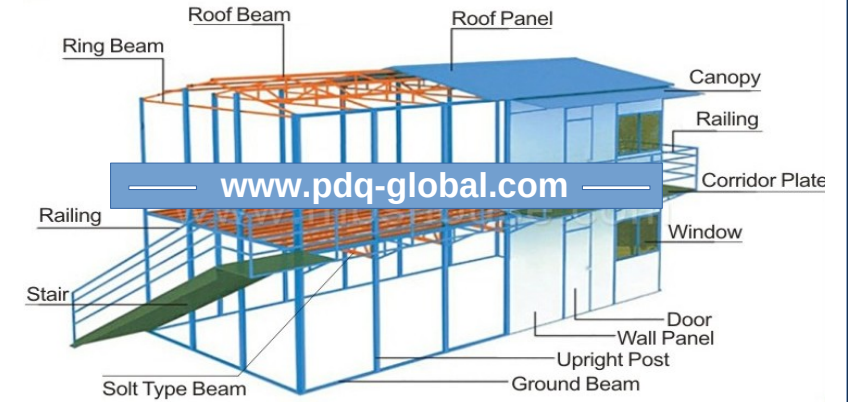
Container loading: 2~4 sets/20GP 2~8 sets/40HQ

'K' House Data

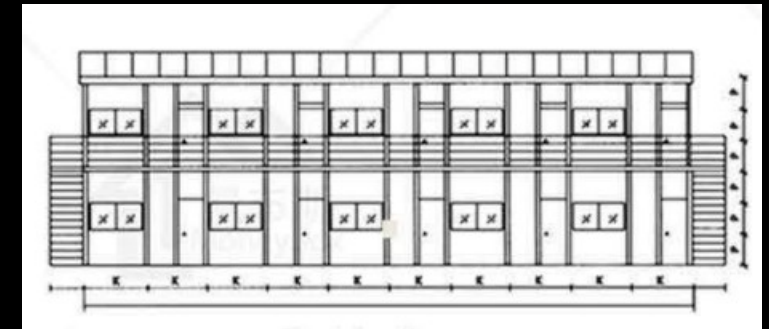


- ❶ Wall: Sandwich Panel
- ❷ Roof: Sandwich Panel
- ❸ Life Span: 10 – 15 Years
- ❹ Fireproof: B2, B1, A2, A1
- ❺ Structure: Light Steel Frame
- ❻ Partition Wall: Sandwich Panel
- ❼ Earthquake Resistance: Grade 7
- ❽ Windows: PVC Sliding Windows
- ❾ Wind Resistance: 88.2 - 117km/h
- ❿ Available Colours: White, Blue and Red
- ⓫ Installation Time: 3 Workers 100m2 per Day
- ⓬ Doors: External Security Doors / Internal Sandwich Panel Doors

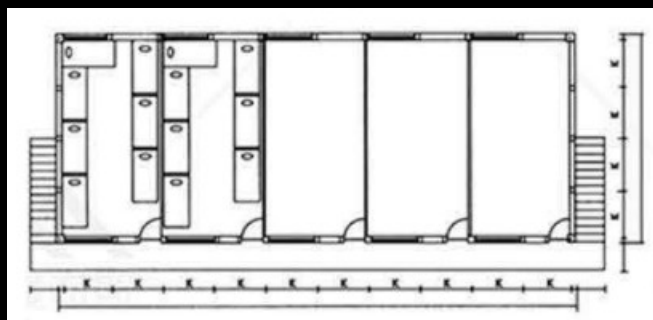
W L	Single Floor(3P)			Double Floor(6P)			Triple		
	3K	4K	5K	3K	4K	5K	3K	4K	5K
4K	45.53	59.07	72.61	103.79	130.87	157.95	176.84	217.46	258.08
5K	56.67	73.52	90.38	126.97	160.68	194.39	212.07	262.63	313.19
6K	67.81	87.98	108.14	150.16	190.49	230.82	247.31	307.81	368.3
7K	78.95	102.43	125.9	173.35	220.3	267.26	282.54	352.98	423.41
8K	90.09	116.88	143.67	196.53	250.11	303.69	317.78	398.15	478.52
9K	101.22	131.33	161.43	219.72	279.93	340.13	353.01	443.32	533.63
10K	112.36	145.78	179.19	242.91	309.74	376.57	388.25	488.5	588.74
11K	123.5	160.23	196.96	266.09	339.55	413	423.48	533.67	643.85
12K	134.64	174.68	214.72	289.28	369.36	449.44	458.72	578.84	698.96
13K	145.78	189.13	232.48	312.47	399.17	485.88	493.96	624.01	754.07
14K	156.92	203.58	250.25	335.65	428.98	522.31	529.19	669.18	809.18
15K	168.06	218.03	268.01	358.84	458.79	558.75	564.43	714.36	864.29
16K	179.19	232.48	285.77	382.03	488.61	595.19	599.66	759.53	919.4
17K	190.33	246.93	303.54	405.21	518.42	631.62	634.9	804.7	974.51
18K	201.47	261.38	321.3	428.4	548.23	668.06	670.13	849.87	1029.62
19K	212.61	275.84	339.06	451.59	578.04	704.49	705.37	895.05	1084.73
20K	223.75	290.29	356.83	474.77	607.85	740.93	740.6	940.22	1139.84
21K	234.89	304.74	374.59	497.96	637.66	777.37	775.84	985.39	1194.95
22K	246.02	319.19	392.35	521.15	667.48	813.8	811.07	1030.56	1250.06
23K	257.16	333.64	410.12	544.33	697.29	850.24	846.31	1075.74	1305.17
24K	268.3	348.09	427.88	567.52	727.1	886.68	881.54	1120.91	1360.28
25K	279.44	362.54	445.64	590.71	756.91	923.11	916.78	1166.08	1415.38
26K	290.58	376.99	463.4	613.9	786.72	959.55	952.01	1211.25	1470.49
27K	301.72	391.44	481.17	637.08	816.53	995.99	987.25	1256.43	1525.6
28K	312.85	405.89	498.93	660.27	846.35	1032.42	1022.48	1301.6	1580.71
29K	323.99	420.34	516.69	683.46	876.16	1068.86	1057.72	1346.77	1635.82
30K	335.13	434.79	534.46	706.64	905.97	1105.3	1092.95	1391.94	1690.3



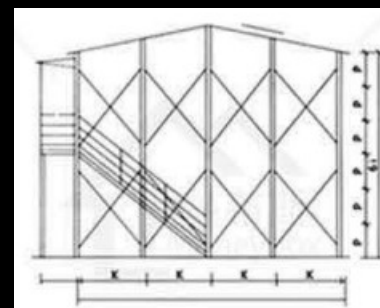
'K' System Construction Details



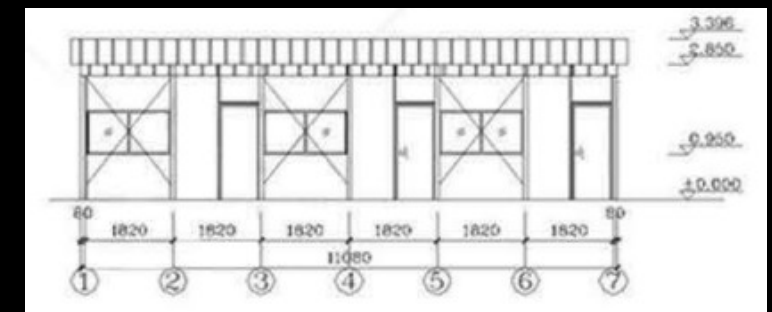
Front Elevation



Layout



Side Elevation



Front Elevation

Construction Area of 'K' System Pre-fab Buildings

K House Advantages



- ① Environmentally Friendly
- ② Reusable: Reusable several times
- ③ Factory Production Rate: 5.600m² per day
- ④ Light Steel Framing: Easy construction, no crane required
- ⑤ Wide Range of Applications: Housing, Clinics, Schools, Hospitals
- ⑥ Competitive Pricing: 50 saving compared To traditional construction methods
- ⑦ Construction Time Savings: 4 workers can construct 100m² of the 'K' System per day
- ⑧ Shipping Cost Savings: 1 x 40' HQ can load Approximately 300m² of 'K' System

Prefabricated T House



— www.pdq-global.com —



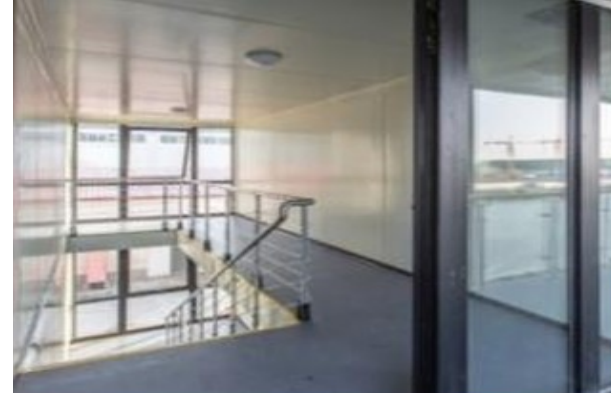
The PDQ Global 'T' House modular construction system composes of light steel gauge keels and sandwich panels and are connected by reinforced screws. Structures can be both assembled & disassembled easily and are reusable to at least 8 times and the life span is 15 to 20 years.

'T' House Data

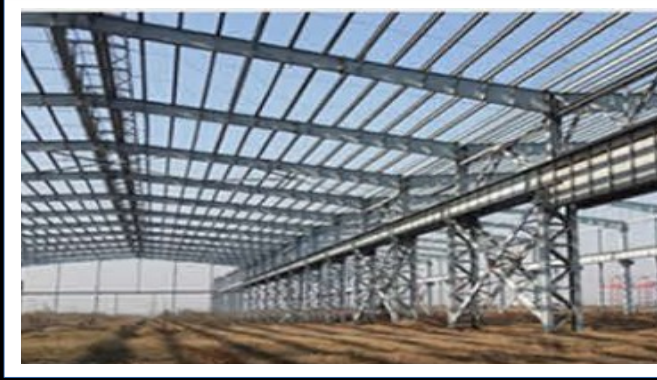


- 1 Wall: Sandwich Panel
- 2 Roof: Sandwich Panel
- 3 Life Span: 15 – 20 Years
- 4 Fireproof: B2, B1, A2, A1
- 5 Structure: Light Steel Frame
- 6 Partition Wall: Sandwich Panel
- 7 Earthquake Resistance: Grade 7
- 8 Windows: PVC Sliding Windows
- 9 Wind Resistance: 88.2 - 117km/h
- 10 Available Colours: White, Blue and Red
- 11 Installation Time: 4 Workers 100m2 per Day
- 12 Doors: External Security Doors / Internal Sandwich Panel Doors

'K' & 'T' House Internal Layout Examples



Steel Series Structures

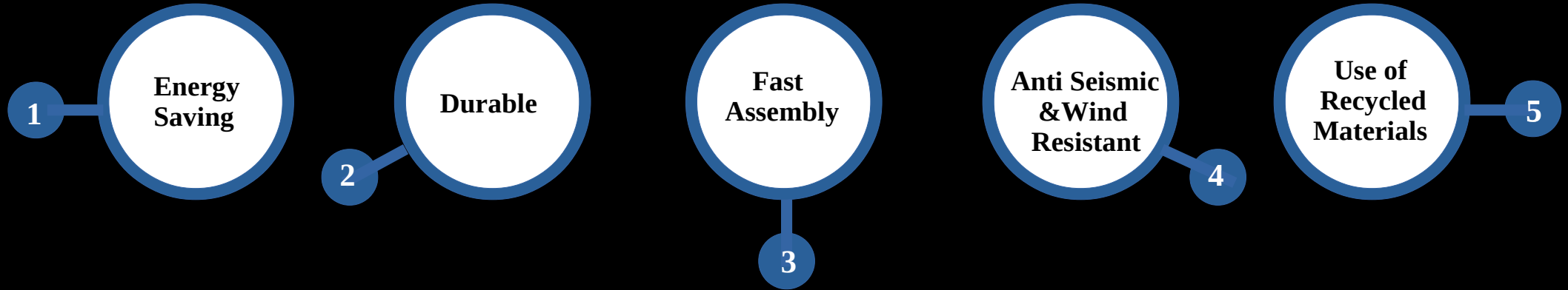


The PDQ Steel Structure Buildings, are among the most popular product offerings we produce. Constructed of Steel and Steel Plate, Steel Columns, Steel Trusses and other Steel Components. The structures are assembled using welding, bolts & rivets. Simple in construction and lightweight, these structures are ideal for factories, warehouses, sports halls etc.

Light Steel Factory Example



Product Features



Product Advantages:

Energy consumption reduced by 60%-90%

Sound insulation, moisture proof ventilation

Durable, roofing load-bearing and fireproofing

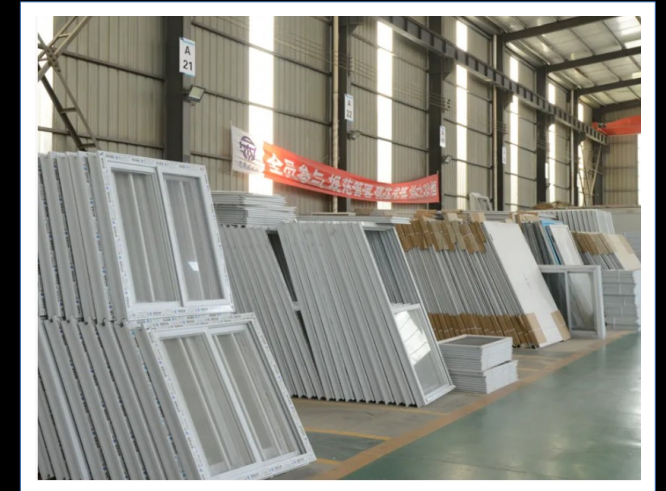
Energy conservation and environmental protection

Material-saving 90% recyclable building materials

Thermal insulation, anti-seismic and wind resistance

Environmental protection – circulation, pollution-free building system

Water-saving - dry construction work, with water consumption reduced by 90%

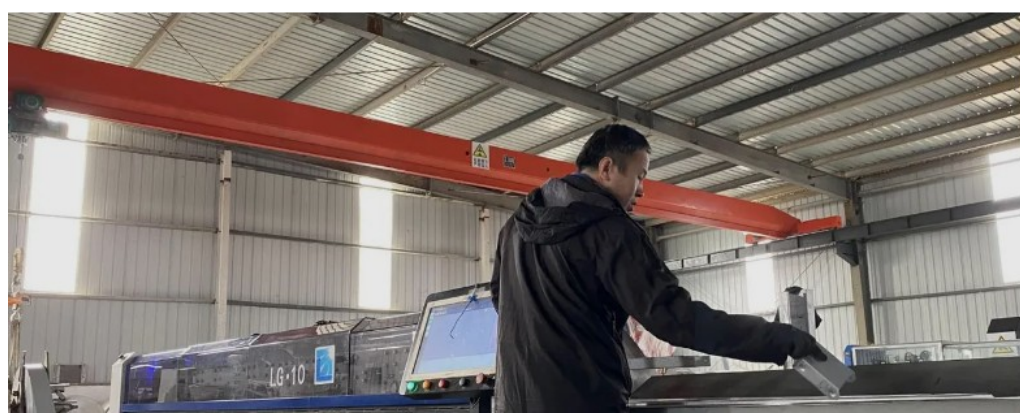


Steel Series Projects

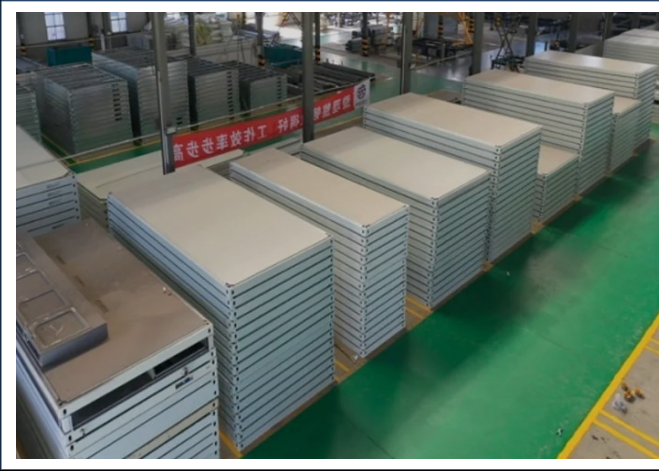




Production Process



Components Storage



Important Points

The PDQ Team are always on hand to make the selection of which structure best suits a customer's particular requirements for any project and in order for us to facilitate speedy and smooth progress, we need to address the points as listed below.

General Issues

- Landscaping issues and aesthetic appeal on site.
- Is the building selected the ideal one for the proposed use by the customer.
- Is there a possibility that the customer will wish to add to the PDQ structure in the future?
- What is the proposed site layout with regard to existing buildings and finishes required to match other buildings on the site.
- Precise details of customers required layout and exterior and interior finish of PDQ structure with illustrative photos from customer of finishes required if possible.

Access to Build Site

- Access for container lorry to site/or close to site.
- Consider possibility of over-lift of the PDQ structure to the site.
- Distance from proposed site of the PDQ structure to the access road.
- If the proposed site is to the rear of any building, is there access to the site, and what is the width/height of that access.
- Possible Health and Safety Issues/Hazards – Overhead power cables/Public safety concerns/Local Hazards/ Traffic conditions/Security on site.

Utilities

- Availability of access to deliver/install septic tank
- Local Authority restrictions in connecting to utilities.
- Position of possible sewer connection/site for septic tank
- Quality of supply (Water pressure/Electricity Ampere's available).
- Possibility of customer wanting to enlarge the supplied PDQ structure in the future.
- Location of mains water/electricity/sewage and distance from the PDQ structure proposed final site.

Contact Us:



Peter Hurst

Mobile: + 44 (0) 7743 948674 (UK)

Whatsapp: + 852 93073664 (Hong Kong)

Email: peterhurstpdq@gmail.com

**Hong Kong Office: UNITS 2804-7. 28th FLOOR, MAN YEE BUILDING,
68 DES VOEUX ROAD CENTRAL, HONG KONG.**

**Head Office: WICKHAMS CAY II, ROAD TOWN, TORTOLA
VG1110, BRITISH VIRGIN ISLANDS.**

[WWW.PDQ-GLOBAL.COM](http://www.pdq-global.com)

