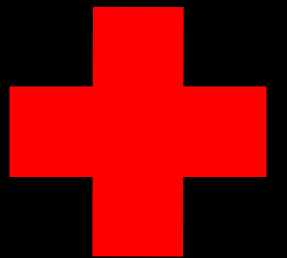




PDQ Global Hospitals: Built With Care In Mind.



Introduction

PDQ Global, created PDQ Hospitals, designed as a fast, affordable system of the supply of extra medical facilities to areas around the world in urgent need of these, whether as hospitals or smaller local clinics or surgeries.

These units are constructed using our modular "container" system and create total building spaces as specified by the relevant local health authorities.

In early 2020 following the outbreak of Covid-19 in mainland China, PDQ, along with our China manufacturing partners were the suppliers of the two "container" system hospitals, one in Wuhan with a 1,000 bed facility completed in 10 and the second in Shenzhen, a 1,500 bed facility completed in 20 days.

We manufacture and deliver hospital solutions all over the World. Recently we have manufactured and shipped a 100 bed facility to central Africa (images included below) and are about to supply 80 x 50 bed facilities as local treatment centres to a neighbouring country.

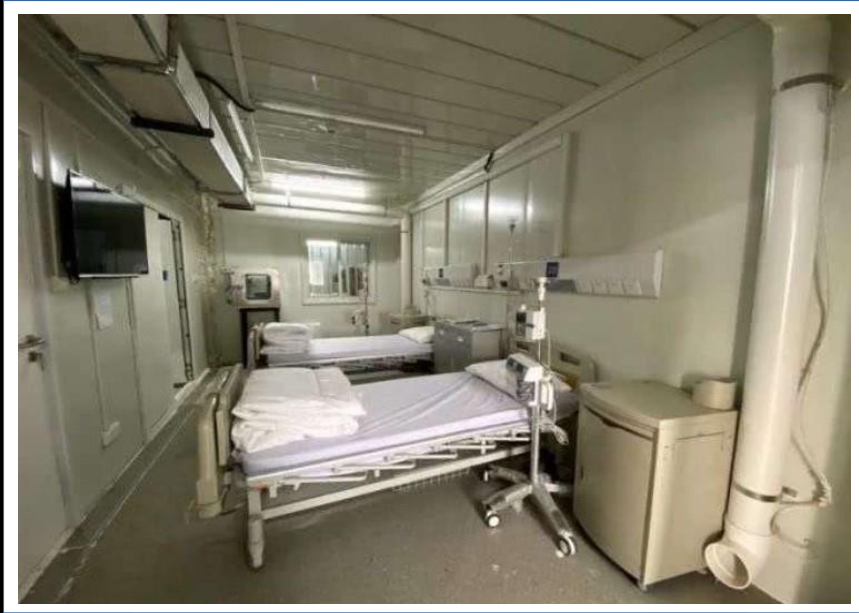
With expertise of over 20 years in manufacturing modular container structures, PDQ Global are confident we can deliver a product to immediately assist the current requirement for extra medical units required. We create hospitals and include facilities, to include bedrooms, en-suite showers and toilets, operating theatre, morgue, staff changing areas, visitor waiting room, cafe, reception area and public wash room's, etc.

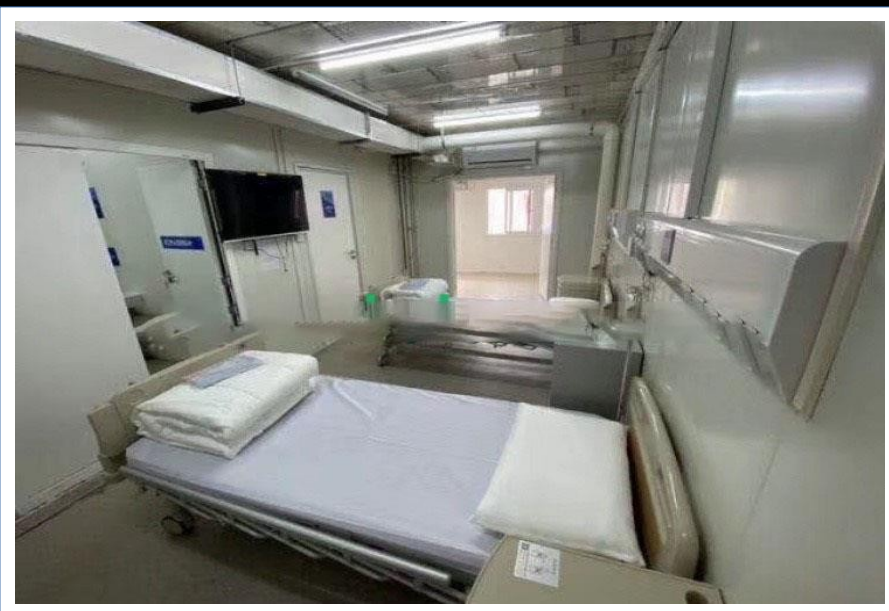
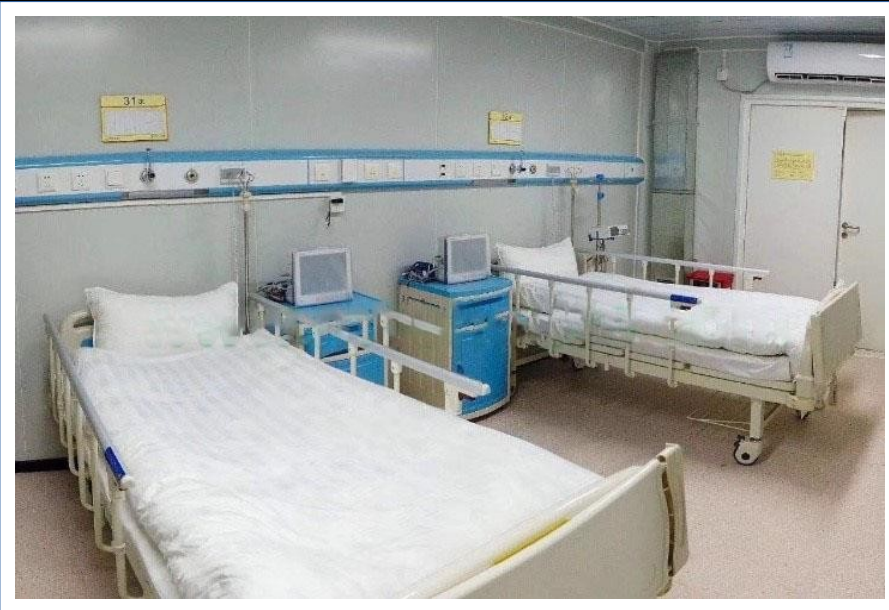
To complete the offering, PDQ Hospitals can supply, hospital beds, screens, adjustable bed tables, medical & bedside cabinets and all furniture required for staff areas. We do not supply medical equipment machinery but can supply a full range of PPE as a current supplier to the National Health Service (NHS) in the United Kingdom.

Wuhan Hospital, China – 1,000 Bed Facility



Internal Layout





9 x 6.3 Meter Room Layout



Floor Plan - 4 Beds, 2 Wash Rooms, 1 Consultation Area

Guangzhou Hospital, China



The Construction

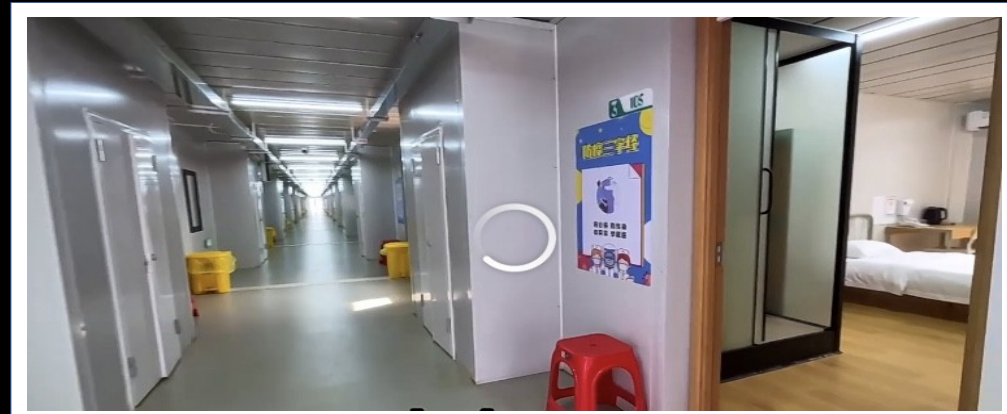
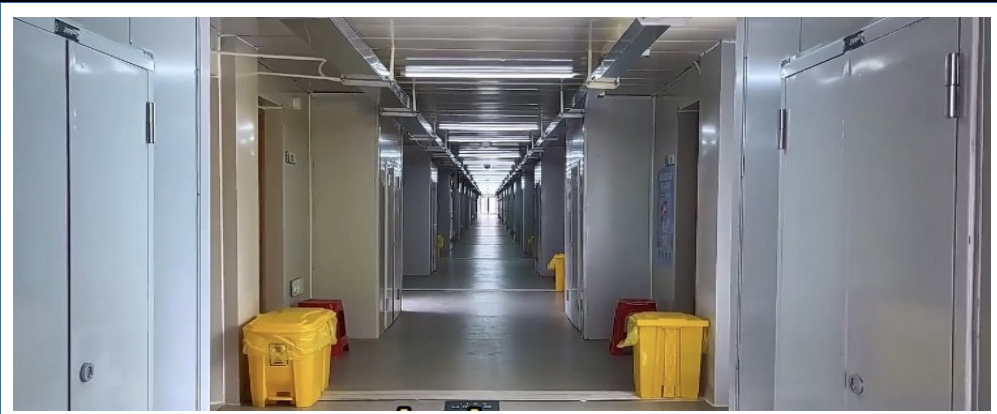


Whatever the terrain, and weather conditions, PDQ solutions can be constructed and utilised for many months and years, and can be disassembled and moved to a different location should local needs deem this necessary.

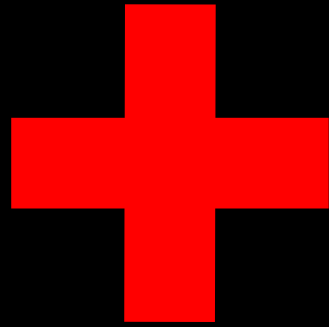
Working alongside local construction companies, simple pillar foundations are easily installed and internal hospital fixtures and fittings, beds and furniture and medical equipment can all be supplied directly to site.



Internal Layout



Central African, China – 100 Bed Facility



Medical Emergency Clinic - 20' Single Unit



**Our on site emergency facilities, bringing relief to areas in a matter of days.
Ease of shipping and ease of delivery to required on field site.**

Medical Emergency Clinic - 40' Double Unit



Multi – Unit Options



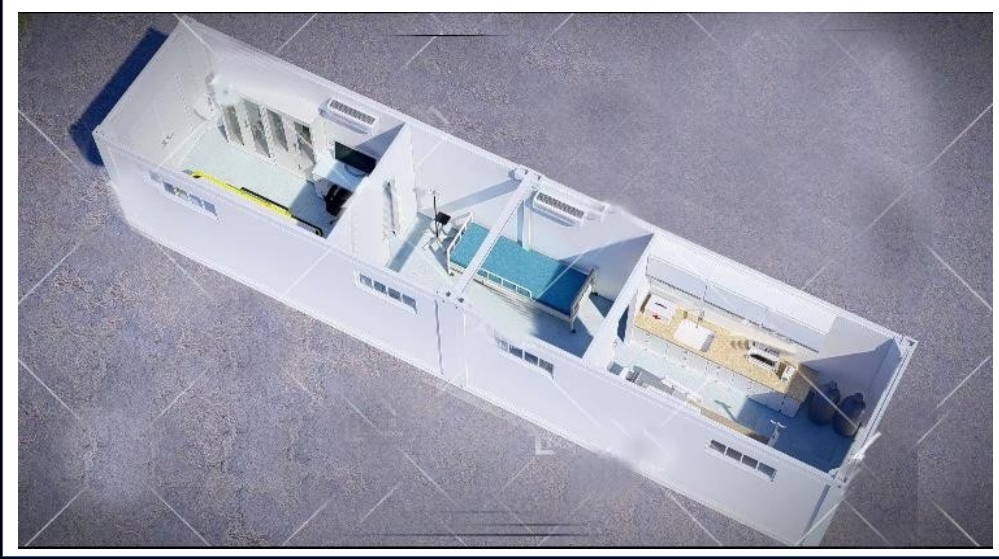
Our largest emergency field site hospital consists of either 10 x Single 20' or 10 x Double 40' Units. Ease of shipping and delivery to required on field site.

Multi – Unit Options Internal Layouts Options

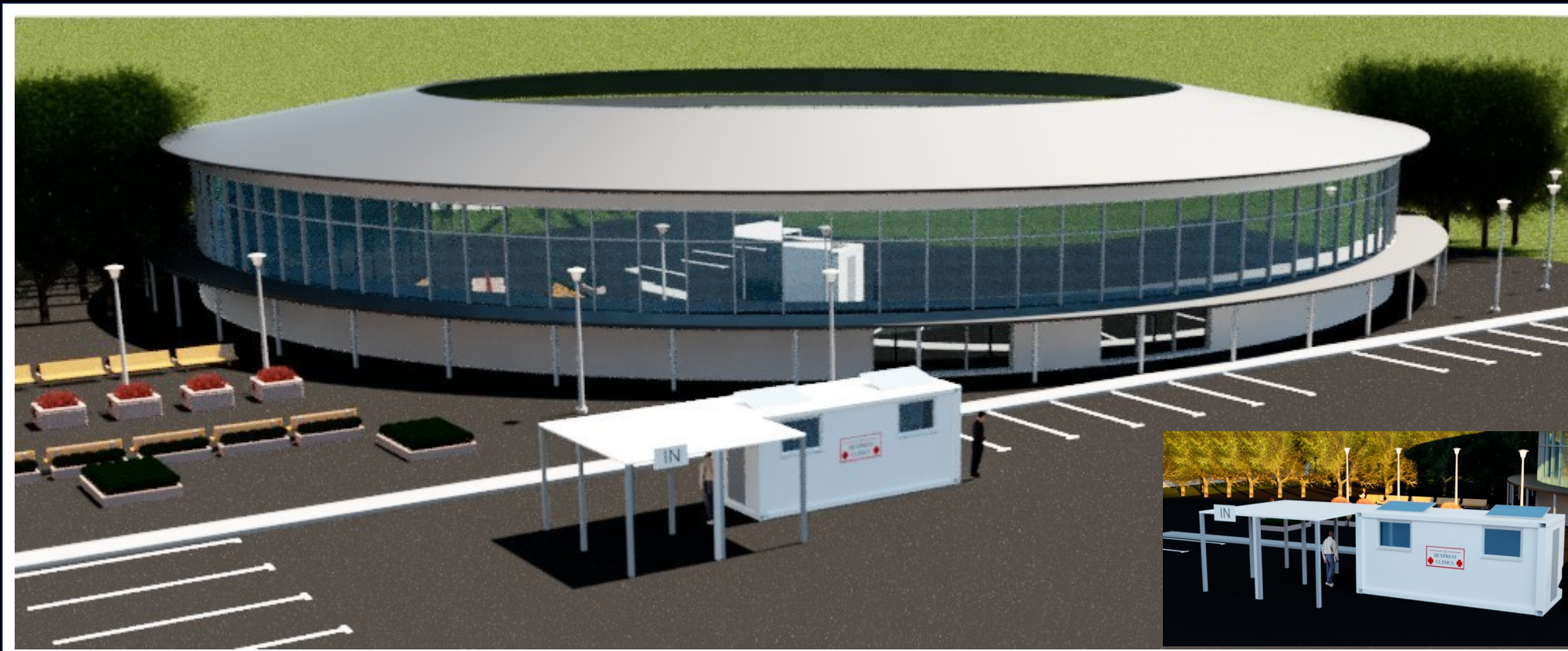


**Suggested internal layout for the 10 x Double 40' Units version.
Layouts can be altered to meet a clients specific needs.**

40' Unit - Internal Layout

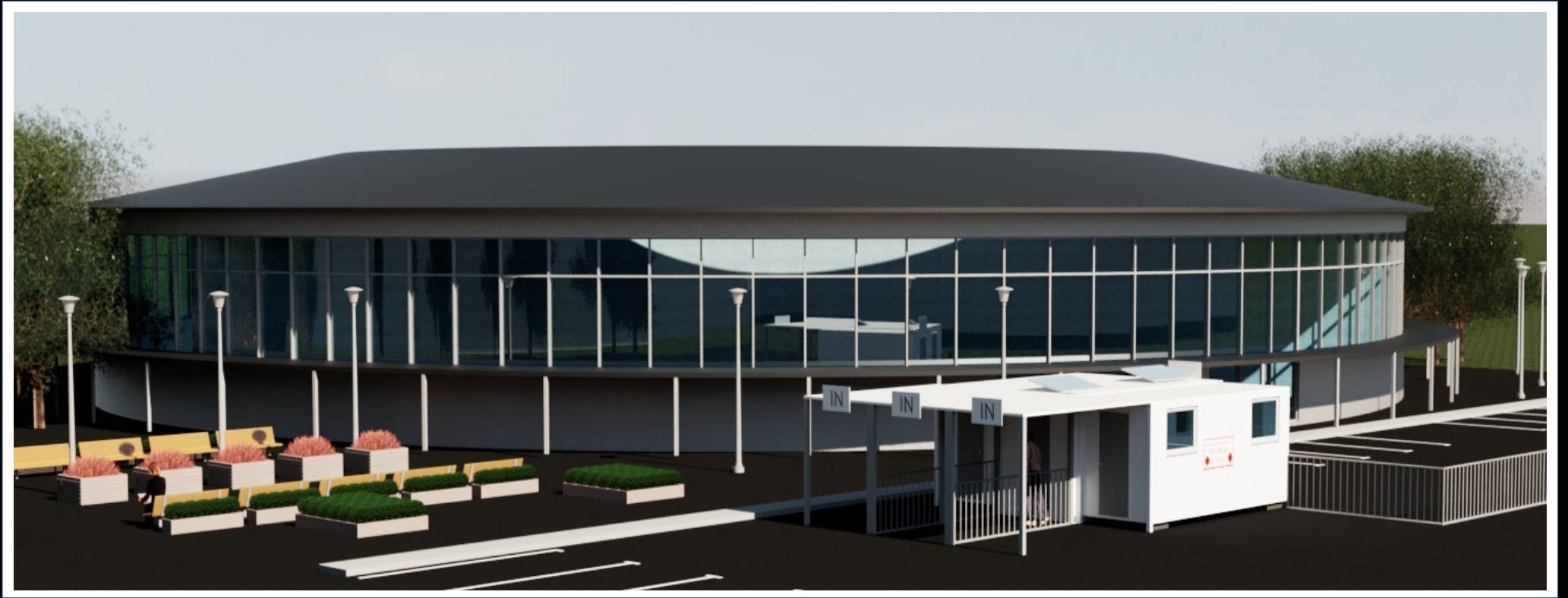


Clinic - 16m2 Unit



1 x 16m2 Clinic - 1 x Entrance Door 1 x Exit Door for fast patient throughput. With outdoor covered waiting/queuing area, these units are ideal for use as a doctors surgery and virus and inoculation centres.

Clinic - 37m2 Expandable Unit



1 x 37m2 Clinic - 3 x Entrance Doors and 3 x Exit Doors for fast patient throughput. With outdoor covered waiting/queuing area, these units are ideal for use as a doctors surgery and virus and inoculation centres.

Clinic - 37m2 Expandable Unit



Product Information

- **PVC Floors supplied**
- **Insulated to a high standard**
- **Lighting/sockets/wiring supplied**
- **1 x fork lift if available for ease of unloading**
- **Simple steel and concrete pillar foundations**
- **Affordable - quotation available upon request.**
- **4 full units* delivered to site in 1 x 40' HQ Container**
- **Lightweight - Each total unit* approximately - 3.7 Tonnes**
- **Outer covered walkways on individual or each building side.**
- **Fully adjustable configurations, to suit individual hospital requirements**
- **All products conform to Regulations: 305/2001/EU & EN1090-1 + A1: 2011**
- **Each 4 Bed, 2 Wash room unit*: Size approx: L9m x W6.3m, Total area 56m2**
- **Internal walls, doors, windows etc supplied to design requirements required**
- **All aluminium framed, double glazed external doors and windows supplied ex factory**
- **Additional exterior cladding and decoration options and costs are available upon request**
- **Ex factory wall colours available Brown, White and Dark Grey (see images), framing available White, Dark Grey, Brown and Black**
- **Speed of Project Delivery: 20 days factory manufacturing time, 30 - 45 days shipping, on-site assembly and final internal fitting , 10 days.**

Important Points

The PDQ Team are always on hand to make the selection of which structure best suits a customer's particular requirements for any project and in order for us to facilitate speedy and smooth progress, we need to address the points as listed below.

General Issues

- Landscaping issues and aesthetic appeal on site.
- Is the building selected the ideal one for the proposed use by the customer.
- Is there a possibility that the customer will wish to add to the PDQ structure in the future?
- What is the proposed site layout with regard to existing buildings and finishes required to match other buildings on the site.
- Precise details of customers required layout and exterior and interior finish of PDQ structure with illustrative photos from customer of finishes if possible.

Access to Build Site

- Access for container lorry to site/or close to site.
- Consider possibility of over-lift of the PDQ structure to the site.
- Distance from proposed site of the PDQ structure to the access road.
- If the proposed site is to the rear of any building, is there access to the site, and what is the width/height of that access.
- Possible Health and Safety Issues/Hazards – Overhead power cables/Public safety concerns/Local Hazards/ Traffic conditions/Security on site.

Utilities

- Availability of access to deliver/install septic tank
- Local Authority restrictions in connecting to utilities.
- Position of possible sewer connection/site for septic tank
- Quality of supply (Water pressure/Electricity Ampere's available).
- Possibility of customer wanting to enlarge the supplied PDQ structure in the future.
- Location of mains water/electricity/sewage and distance from the PDQ structure proposed final site.



Peter Hurst

Mobile: + 44 (0) 7743 948674 (UK)
Whatsapp: + 852 93073664 (Hong Kong)

Email: peterhurstopdq@gmail.com

**Hong Kong Office: UNITS 2804-7. 28th FLOOR, MAN YEE BUILDING,
68 DES VOEUX ROAD CENTRAL, HONG KONG.**

**WICKHAMS CAY II, ROAD TOWN, TORTOLA
VG1110, BRITISH VIRGIN ISLANDS.**

[WWW.PDQ-GLOBAL.COM](http://www.pdq-global.com)

