



PDQ Global 'T' System

ASYLUM SEEKERS, REFUGEES & EMERGENCY ACCOMMODATION

Solutions to Problems



Introduction

PDQ Global, offers manufacturing for our modular structures, from our state-of-the-art facility based in Pangyu, China, who are the leaders of China's Light Steel Building Industry. Manufacturing energy-saving buildings, we are committed to the research & development, application and popularisation of such structures on a global scale. Our manufacturing facilities are spread over 16 sites including ones at Sanya, Changsha, Wuhan, Nanchang, Shanghai, Chengdu and Changqing, with a total manufacturing space of 220,000m² and an annual production capacity of 10.92 million square meters of modular structures.

We have assembled a group of high quality trained professional technicians and on-site installation teams, providing customers with a full and complete service from project conception, design, manufacture and construction, to final assembly and internal fixtures and decoration.

Supplying fast build and affordable solutions, that include prefabricated houses, light steel villas, *container houses*, office blocks, schools, hospitals, factories, warehouses, portable toilets & security staff boxes. PDQ Global are committed to providing quality and efficient pre and after sale services, enhancing our reputation with our many customers around the World. These include territories such as Angola, Ethiopia, Nigeria, South Africa, Somalia, Morocco, Russia, Kyrgyzstan, United Arab Emirates, Saudi Arabia, Iran, Iraq, Maldives, Vietnam, United States of America, Malaysia, Peru etc with usage of our solutions constantly expanding to many other parts of the globe. We ensure through our 25 years of experience building these structures, to offer our customers the most up-to-date, and effective solutions to their requirements.



★ Our Wuhan hospital facility, constructed at the outbreak of Covid-19 in Wuhan, China. A 1,000 bed facility built, ready for patient intake, within 10 days and the second in Shenzhen, 1,500 beds and completed in 20 days.

Asylum Seekers, Refugees Emergency Accommodation

Being fully aware of the shortage issues facing the world regarding the accommodation of people seeking fast housing solutions, we have developed the 'T' Construction System, supplied from our China manufacturing facility and offering safe, clean, and comfortable living and aiding the solving of this current and ongoing crisis.

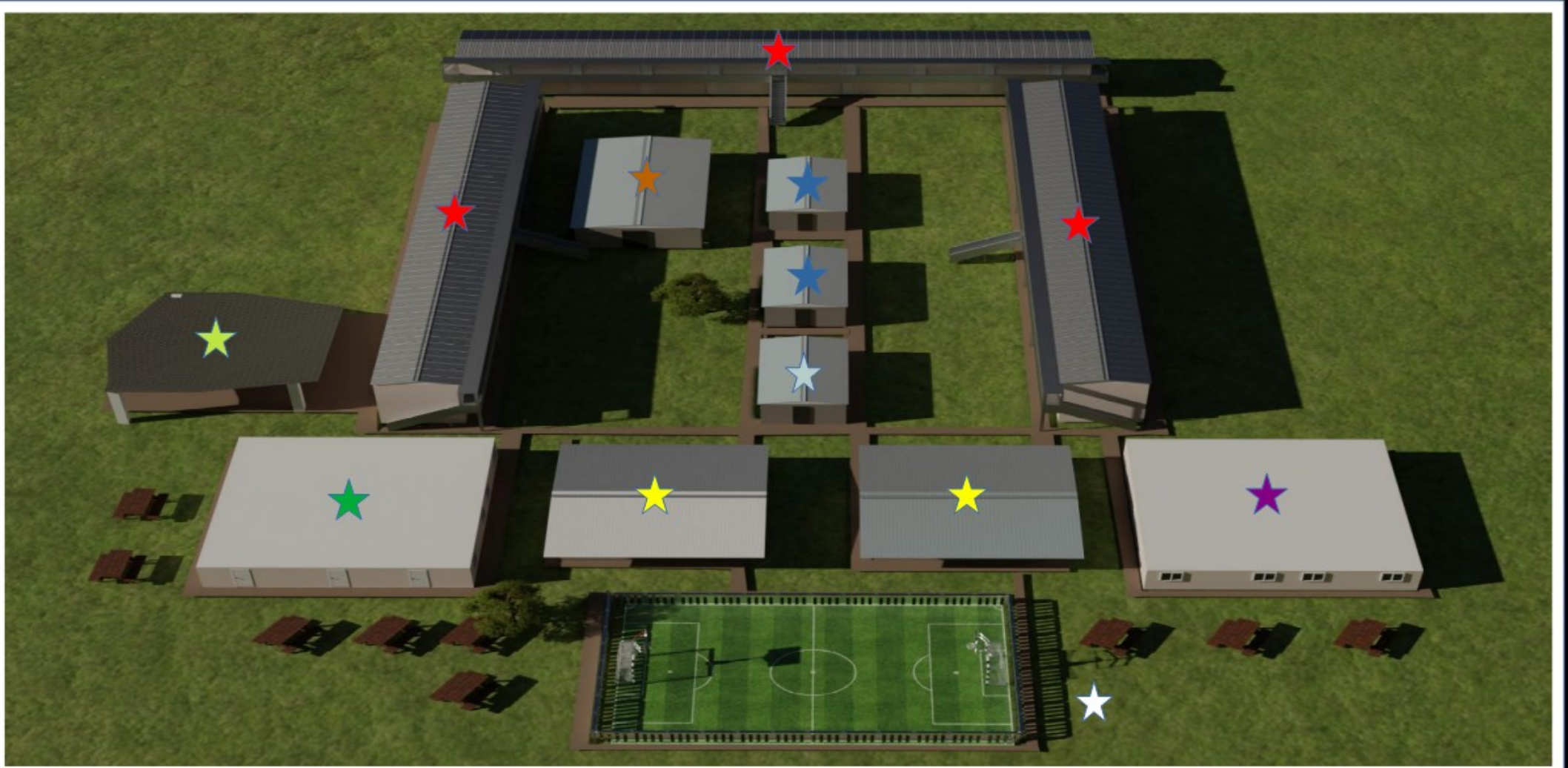
These systems offer safe, clean and comfortable 'one stop' sites that bring not only sleeping, washing and toilet facilities but a complete range of buildings, including kitchens and dining rooms, units for education & medical needs, multi faith prayer rooms, recreational and exercise areas and virtually all amenities required by people arriving in their destination country and fulfilling their needs until more permanent living arrangements are found to accommodate them.

The UK as an example, outspends many of its neighbours in housing asylum seekers, with costs taking up nearly a third of the official government aid budget, and yet there are still concerns about the quality of housing provided to not only asylum seekers but many citizens on lower incomes. Refugee organisations are frequently reporting properties which the residents believe are unsafe, and they struggle to get help to rectify these potentially dangerous and in some instances, life threatening issues.

The 'T' System is constructed using the highest quality materials and adheres to all relevant local construction regulations and literally 100's of square meters of buildings can be erected by very few workers in extremely short time frames, enabling the internal fixtures and fittings to be rapidly installed, allowing these sites to be ready and available for occupation within weeks, rather than months or even years, as with current 'traditional' building systems. For the 'T' System, no heavy lifting equipment is required to construct these light but very strong steel framed buildings. Our monthly factory production output rate is 100,000 m2 and each 40' shipping container can transport 200 square meters of buildings.

PDQ Global, are able to address and resolve many of the serious concerns involving accommodation availability and living conditions, in both a fast and cost effective manner.

Complex Layout



★ CLASSROOMS X 2

★ TOILETS & SHOWERS X 2

★ ACCOMMODATION UNITS x 3

★ KITCHEN & RESTAURANT X 1

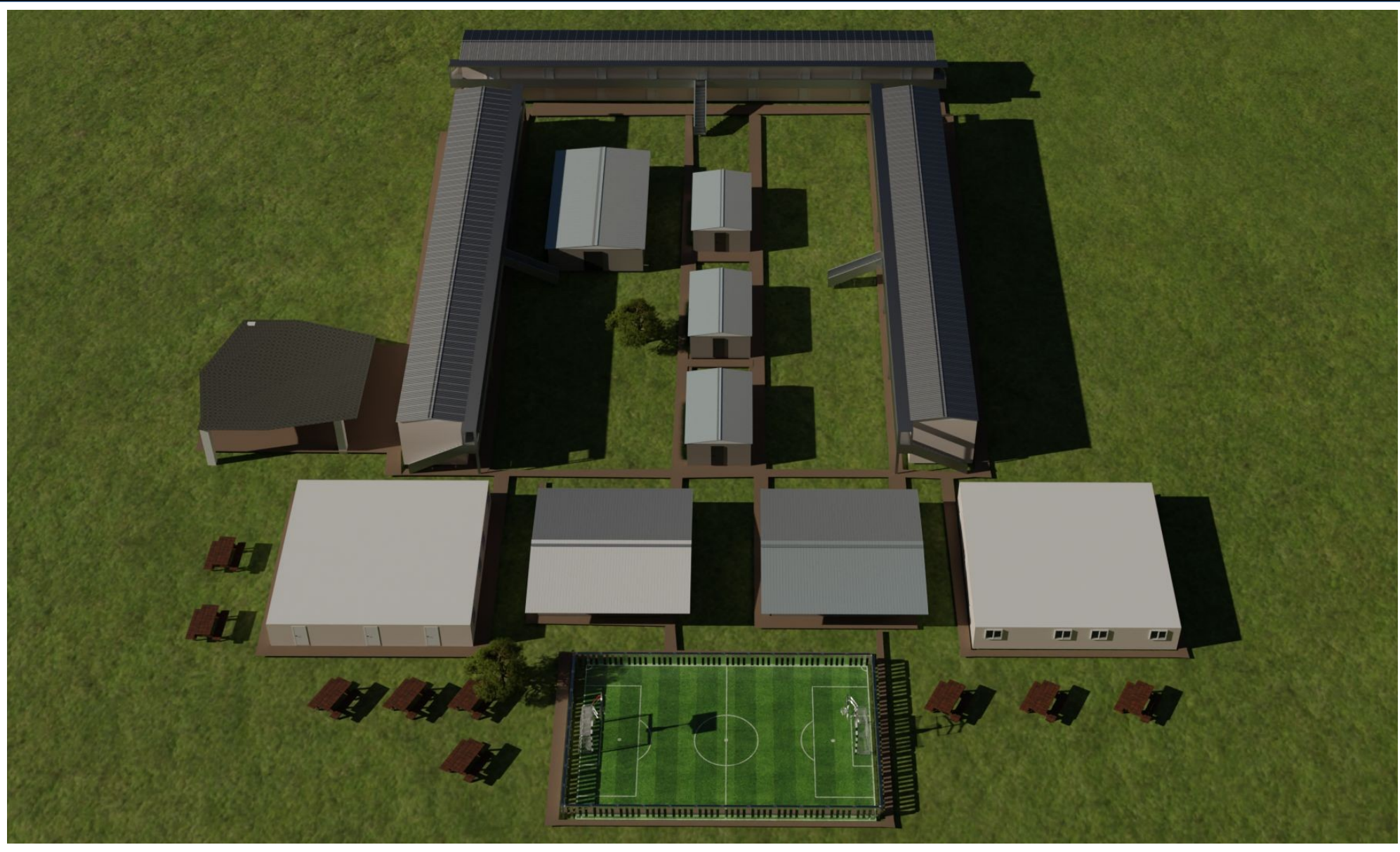
★ MEDICAL / COUNSELLING / ADMINISTRATION BLOCK X 1

★ PERSONAL STORE X 1

★ COVERED OUTDOOR AREA

★ MULTI-FAITH PRAYER ROOM x 1

★ MULTIPLE SPORTS USAGE COURT



Centrally Located Shower, Toilets Units, Store & Prayer Room



Outer Complex Buildings: Kitchen/Dining Room, Classrooms, Medical Counselling & Administration Block, Sports Court & Covered Area and Seating

2 Occupants Room Layout



On-Site Facilities

Accommodation Rooms ★

Each separate unit is 5 x 4 meters (20m²), calmly decorated with central overhead lighting and individual bed lighting, electrical points with USB charging ports, and with a quality 2 Tier Bunk Bed facility can accommodate two adults in comfort. Rooms will have space for a writing desk and chair, a comfortable lounge chair, a shared split wardrobe for cloths storage, a fridge, and a kettle. All rooms will have a window with curtains, a Mirror and coat hooks, and will be accessible from a 1-meter-wide covered walkway with a private front door, on either a ground or a first-floor corridor via a steel staircase.

Disabled Rooms

These rooms are 10m x 4m with wheelchair accessible doors. Fitted for single person occupancy, these rooms will include a bathroom built as a Wet room, with floor level shower, Wheelchair Height Basin that can be raised or lowered, and a Wheelchair accessible toilet with Push up bars.

Laundry Room

On each accommodation floor, the room is a 4 m x 5m (20m²) with 2 washing machines 2 Dryers, Ironing Board, and Iron.

The Communal Toilet and Shower ★

This block will be fitted with 20 toilets and urinals / 20 showers and 20 hand basin with mirrors, shaving points, lockers, and fixed benches for the comfort and security of users possessions. The Block size is 20m x 10m (200m²).

The 2 x Classrooms ★

Each unit is 10m x 10m (100m²) each with space for Tables and Chairs (150m² to accommodate up to 20 students at any one time, for both classes and for recreational use when available.

The Kitchen and Restaurant ★

15m x 15m (300m²) with a commercial kitchen facility and servery. The kitchen will have workspace for 10 cooking hobs & ovens for individual cooking, and tables and chairs to accommodate up to 50 people at any one time.

There will be 5 wash basins for cooking and washing of plates and cooking utensils.

One cooker hob and sink will be adjustable and wheelchair user accessible.

The Medical Examination / Treatment, Counselling, and Administration block ★

Is 15m x 15m (300m²) and provides several rooms for medical examination and Basic Treatment, Private rooms for Counselling, a seated waiting area, and Administration rooms for staff and security personnel. It will also include 2 toilets and washbasins. There will be one office accessible private toilet for staff use with a small kitchen and staff room for Night Staff.

There will also be a security room for on-site CCTV Monitoring.

Multi Faith Prayer Room ★

Is 15m x 10m (150m²) with simple washing (handbasins) and 4 x toilets room. A small additional 'reception' space would also be good as the Muslims all leave their shoes outside when they pray!

The Personal Store ★

Is 5m x 15m (75m²) and will contain up to 100 lockable compartments so that residents may store their personal possessions without taking up space in their accommodation rooms.

The Covered Outdoor ★

The area is 15m x 15m (300m²) and provides exterior seating for up to 50 people.

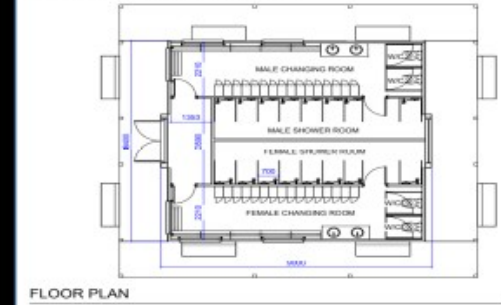
Recreation & Leisure ★

There will be a Fenced and marked recreation area for exercise and ball games.

- * Toilets
- * Showers
- * Washbasins



Changing rooms - 9M X 8.4M (Unisex)



- * Canteen
- * Laundry Room
- * TV/Video Room



- * Prayer Room
- * Gymnasium
- * Sports Hall



* Classrooms

* Medical
Consultation

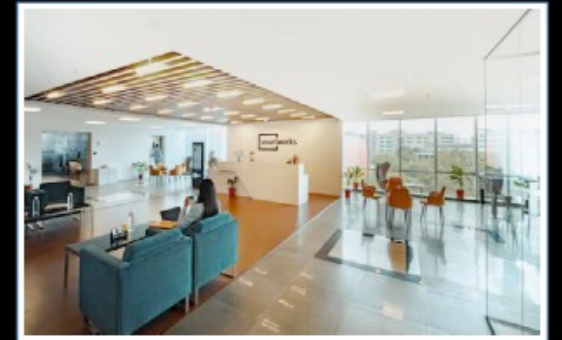
* Dental
Consultation



* Secure Storage

* Computer Room

* Reception



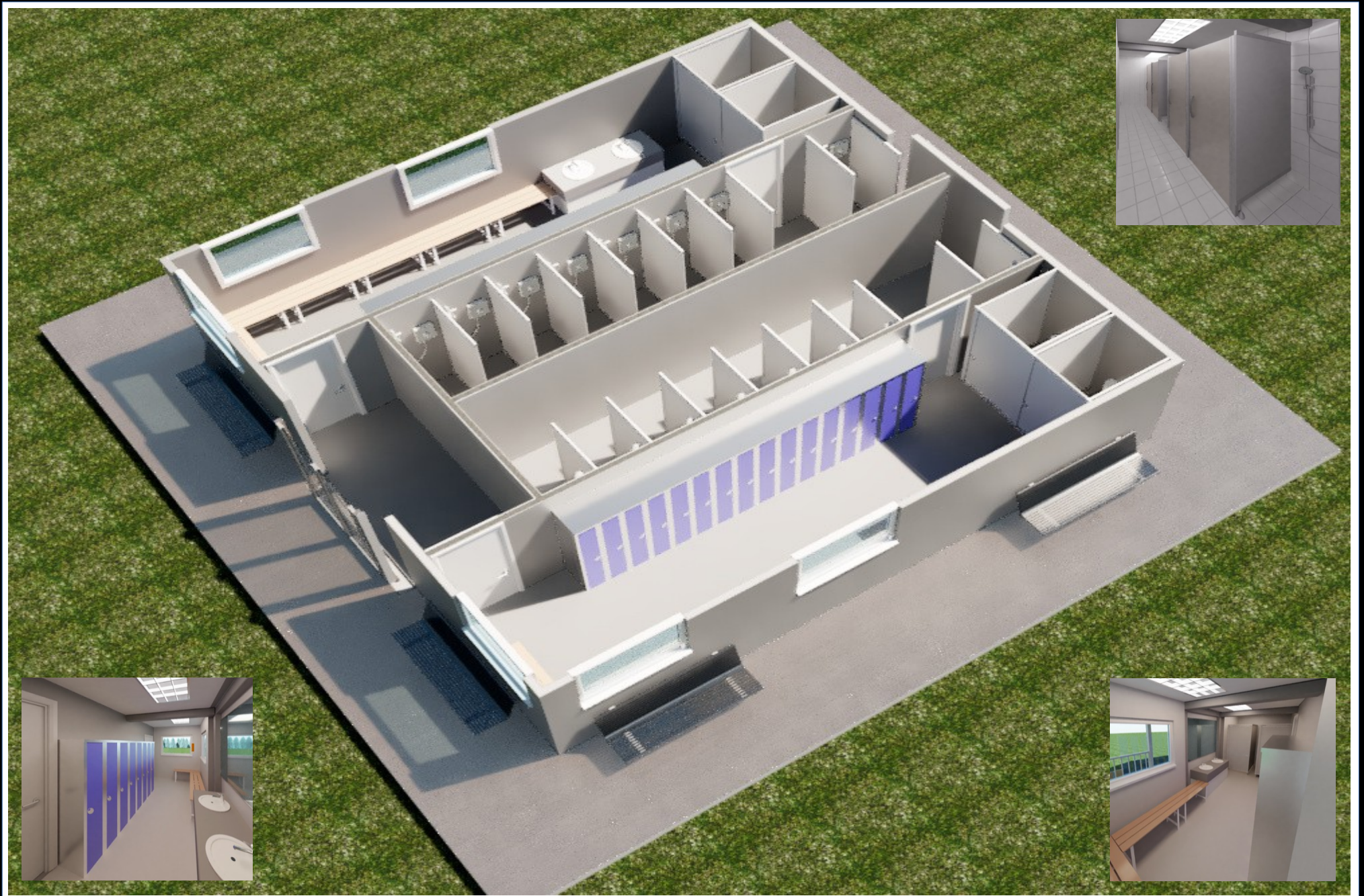
PDQ Global 'T' System - Solutions to Problems

ASYLUM SEEKERS, REFUGEES & EMERGENCY ACCOMMODATION

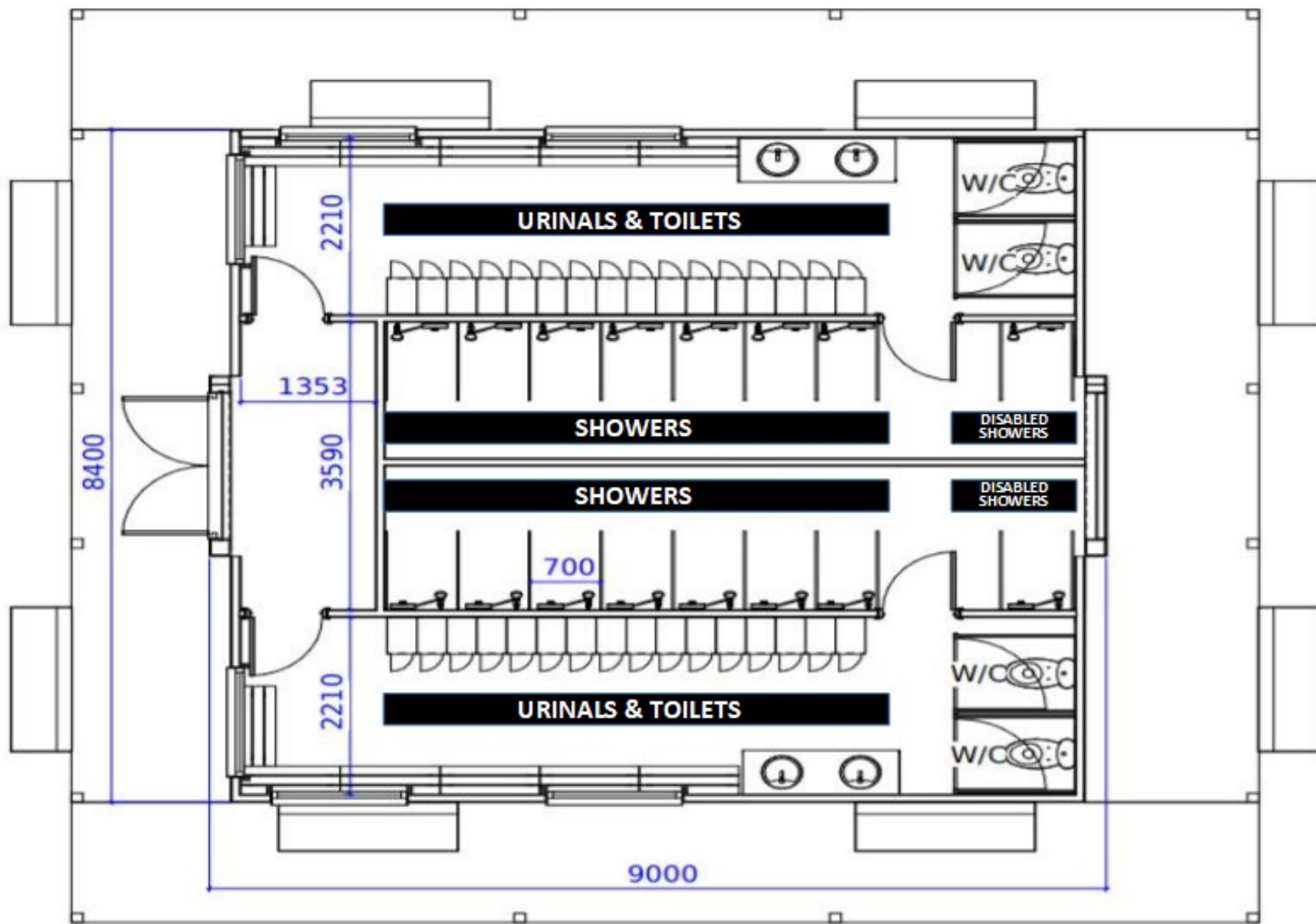
Changing Rooms

The PDQ Global range of changing rooms, with lockers, washbasins, toilets and shower facilities, bringing affordability, speed of build & modern design for asylum seekers, refugees & emergency situations.





9.00 x 8.4 Meters



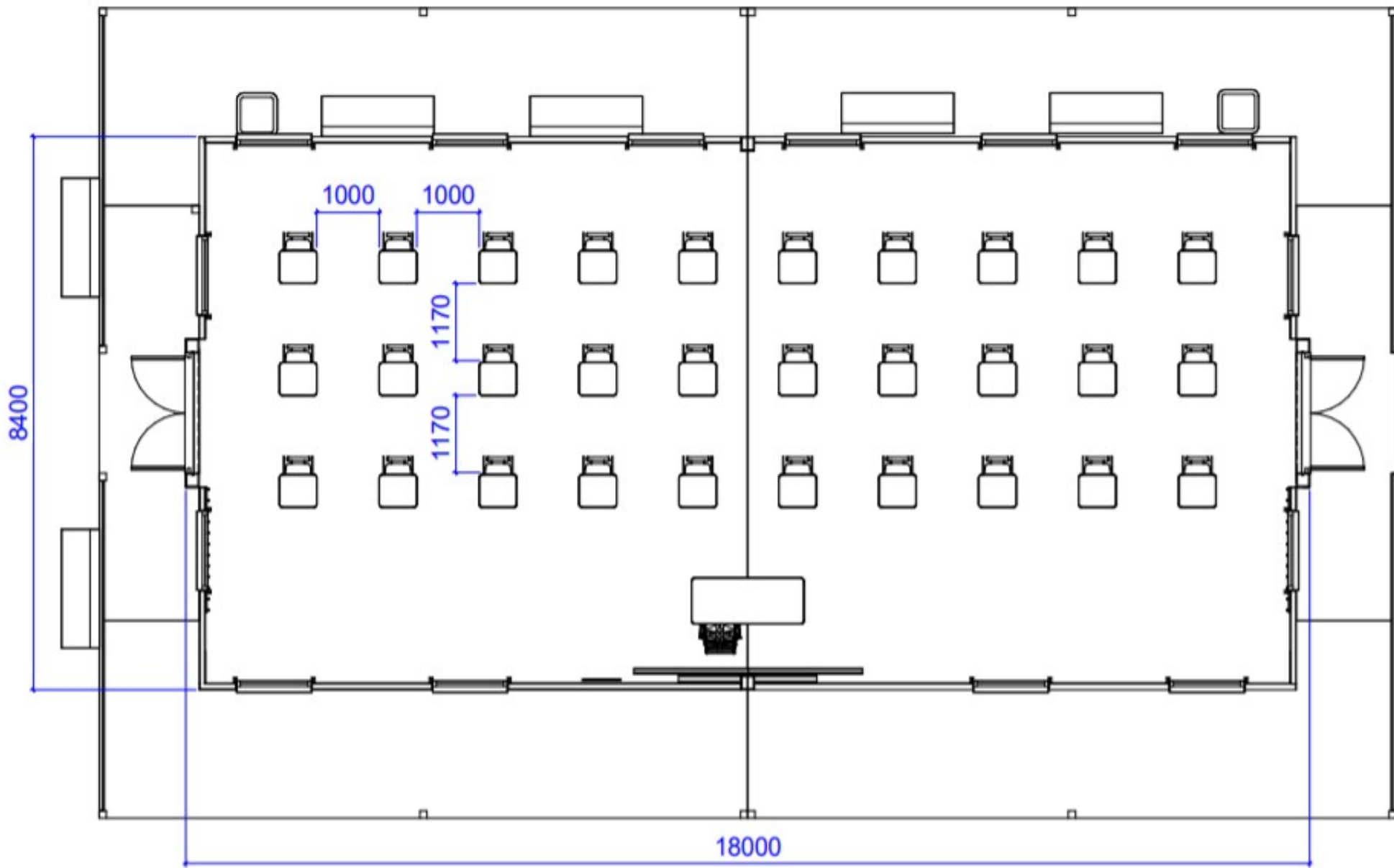
Classrooms

The PDQ Global range of classrooms bringing education and leisure activity spaces for, asylum seekers, refugees & emergency situations.





18.00 x 8.4 Meters



'T' System Specification



Item No: T01-ARE

Area: Ground Floor 2,780m², First Floor 1,620m²

Exterior Covered Area: 300m²

Total Area: 4,700m²

MOQ: 100m²

Country of Origin: China

Long Lifespan and Reusable

Single or Double Storey Available

Colours: Custom Colours Available

Shipping Port: Guangzhou/Shenzhen

Fast Construction and Ease of Installation

Excellent Heat Insulation, Waterproof & Fireproof

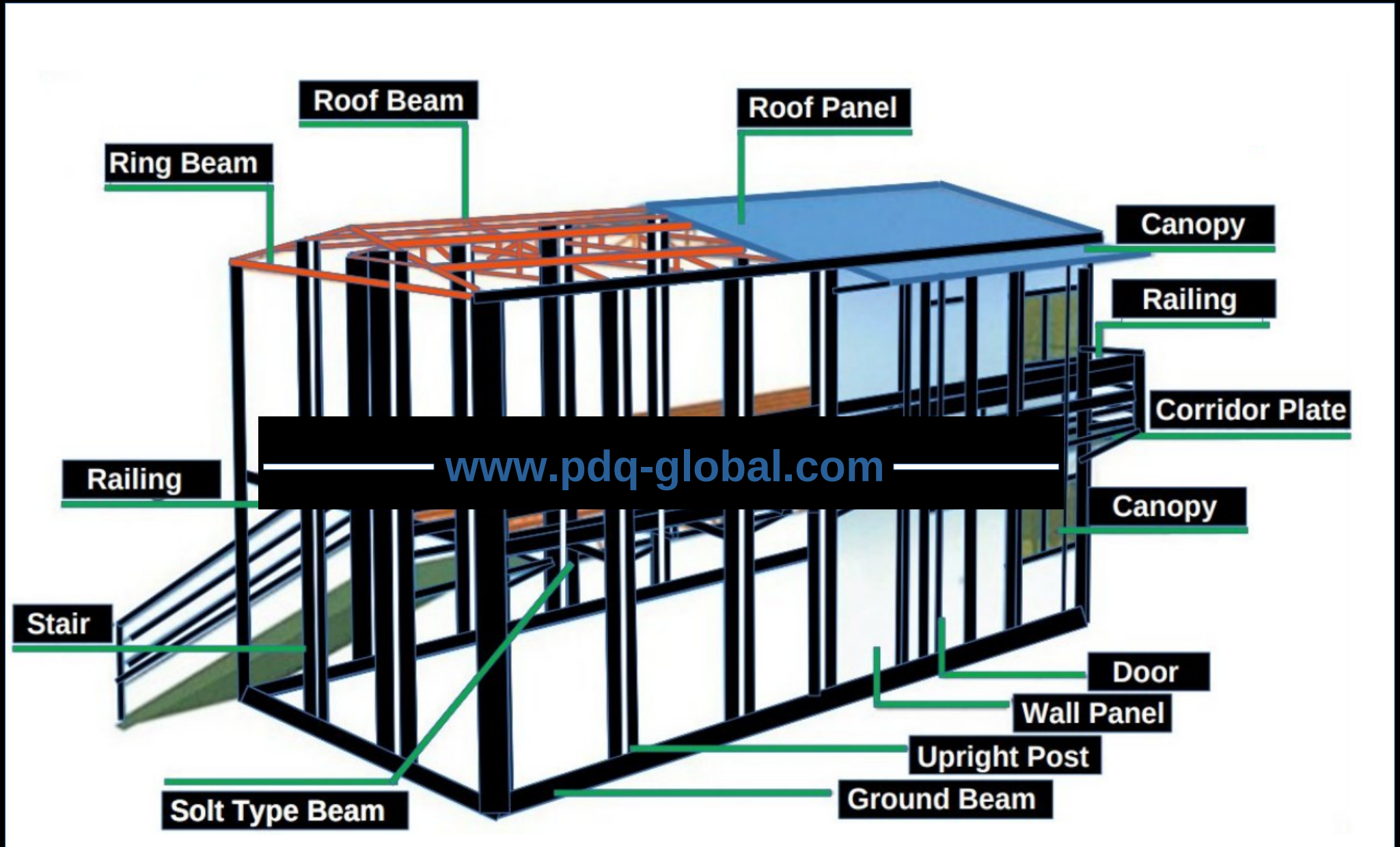
Lead Time: 15 -25 Days following receipt of P/O & Deposit Payment

Eco Friendly Materials Used for Construction & no on-site waste caused

Flexible Internal Layouts Available to Satisfy Differing Situation Requirements

<u>Item No:</u>	<u>Component</u>	<u>Specification</u>
	Wall Panel	50 Double Colour-Coated Steel <u>EPS</u> Sandwich Board (Steel: 0.286mm, <u>EPS</u> Density: 10kg)
	Roof Panel	50 Double Colour-Coated Steel <u>EPS</u> Sandwich Board (Steel: 0.286mm, <u>EPS</u> Density: 10kg) – Blue, White or Red
	Partition Wall	50 Double Colour-Coated Steel <u>EPS</u> Sandwich Board (Steel: 0.286mm, <u>EPS</u> Density: 10kg) + Aluminium Slot and Accessories
	Column	Double C-shaped Steel. Size: 80*40*1.8mm
	Roof Beam	C-shaped Steel. Size: 80*40*1.8mm & 50*40*1.8mm
	Tie Rod	CP8
	Ground Beam	Double C-shaped Steel. Size: 80*40*1.6mm
	Round Beam	Double C-shaped Steel. Size: 80*40*1.6mm
	Roof <u>Purlin</u>	Galvanized Angle Steel: 1.5m
	Door	50mm Double Colour-Coated Steel <u>EPS</u> Sandwich Door Size: 800*2,000mm
	Window	Plastic & Steel Window: 1,740*925mm

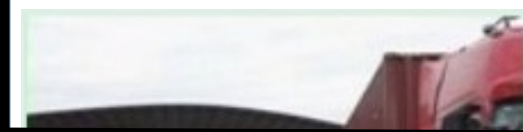
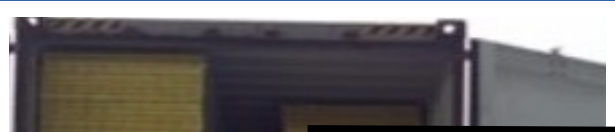
The Construction



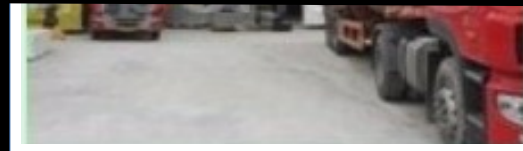


PDQ GLOBAL - the one-stop solution to problems

Packing & Shipping



www.pdq-global.com



1 x 40' HQ = 200m2 of 'T' System

-

Production Rate: 100,000m2 every 25 Days

Important Points

The PDQ Global team are always on hand to make the selection of which structure best suits a customer's particular requirements for any project and in order for us to facilitate speedy and smooth progress, we need to address the points as listed below.

General Issues

- Landscaping issues and aesthetic appeal on site.
- Is the building selected the ideal one for the proposed use by the customer.
- Is there a possibility that the customer will wish to add to the PDQ structure in the future?
- What is the proposed site layout with regard to existing buildings and finishes required to match other buildings on the site.
- Precise details of customers required layout and exterior and interior finish of PDQ structure with illustrative photos from customer of finishes if possible.

Access to Build Site

- Access for container lorry to site/or close to site.
- Consider possibility of over-lift of the PDQ structure to the site.
- Distance from proposed site of the PDQ structure to the access road.
- If the proposed site is to the rear of any building, is there access to the site, and what is the width/height of that access.
- Possible Health and Safety Issues/Hazards – Overhead power cables/Public safety concerns/Local Hazards/ Traffic conditions/Security on site.

Utilities

- Availability of access to deliver/install septic tank
- Local Authority restrictions in connecting to utilities.
- Position of possible sewer connection/site for septic tank
- Quality of supply (Water pressure/Electricity Ampere's available).
- Possibility of customer wanting to enlarge the supplied PDQ structure in the future.
- Location of mains water/electricity/sewage and distance from the PDQ structure proposed final site.

Contact Us:



Peter Hurst

Mobile: + 44 (0) 7743 948674 (UK)

Whatsapp: + 852 93073664 (Hong Kong)

Email: peterhurstpdq@gmail.com

**Hong Kong Office: UNITS 2804-7. 28th FLOOR, MAN YEE BUILDING,
68 DES VOEUX ROAD CENTRAL, HONG KONG.**

**Head Office: WICKHAMS CAY II, ROAD TOWN, TORTOLA
VG1110, BRITISH VIRGIN ISLANDS.**

WWW.PDQ-GLOBAL.COM

