



PDQ GLOBAL 'T' System

AIR STAYS – Guests, Aircrew and Ground Staff Hotel

Solutions to Problems



Introduction

PDQ Global, working alongside a newly formed Asian based Airline, have designed a 30 bedroom hotel for the accommodation of paying guests, aircrew and ground staff, bringing a range of on-site facilities and offering a relaxing and safe environment, built using our 'T' Construction System.

The total complex, consists of a 30 bedroom hotel, each bedroom being 6 x 5 meters (30m² area) and feature either king size beds for single occupancy for the use of pilots and co-pilots or twin beds for dual occupancy for aircrew and ground staff and each offer bedside cabinets, office desks, dressing tables, wardrobes & a fully fitted bathroom with shower, washbasin and toilet. The hotel has on the ground floor a front lobby, reception, luggage storage area, in-house security, operations & control rooms. Comfortable TV lounges and male and female wash rooms are also provided, off the reception area.

The self - service restaurant with kitchen, prepares a selection of fresh meals for the crew on the front dining side, while on the rear facing side, meals are prepared for serving to passengers and crew as the next days in flight meals, with a refrigerated storage area and loading bay for delivering the meals swiftly to waiting aircraft.

Separately, is a fully fitted leisure area featuring sauna and steam rooms, gymnasium, stretch/cool down area and full changing facilities. Completing the hotel and amenities complex, is a covered, open -sided relaxation area with tables and chairs and a large screen TV.

The PDQ 'T' Construction System uses the highest quality materials and adheres to all relevant local construction regulations and literally 100's of square meters of buildings can be erected by very few workers in extremely short time frames, enabling the internal fixtures and fittings to be rapidly installed, allowing the hotel complex to be ready and available for occupation within weeks, rather than months, as with current 'traditional' building systems. No heavy lifting equipment is required to construct these light but very strong steel framed buildings. Our monthly factory production output rate is approximately 100,000 square meters and each 40' shipping container can transport components to construct a floor area of 200 square meters of buildings.

PDQ Global, offers manufacturing for our modular structures, from our state-of-the-art facility based In Pangyu, China who are the leaders of China's Light Steel Building Industry. Manufacturing energy-saving buildings, we are committed to the research & development, application and popularisation of such structures on a global scale. Our manufacturing facilities are spread over 16 sites including ones at Sanya, Changsha, Wuhan, Nanchang, Shanghai, Chengdu and Changqing, with a total manufacturing space of 220,000m2 and an annual production capacity of 10.92 million square meters of modular structures.

We have assembled a group of high quality trained professional technicians and on-site installation teams, providing customers with a full and complete service from project conception, design, manufacture and construction, to final assembly and internal fixtures and decoration.

PDQ, supply fast build and affordable solutions, including prefabricated houses, light steel villas, *container houses*, office blocks, schools, hospitals, factories, warehouses, portable toilets and security staff boxes. PDQ is committed to providing quality and efficient pre and after sale services, enhancing our reputation with our many customers around the World. These include territories such as Angola, Ethiopia, Nigeria, South Africa, Somalia, Morocco, Russia, Kyrgyzstan, United Arab Emirates, Saudi Arabia, Iran, Iraq, Maldives, Vietnam, United States of America, Malaysia, Peru etc with usage of our solutions constantly expanding to many other parts of the globe. We ensure through our 25 years of experience building these structures, to offer our customers the most up-to-date, and effective solutions to their requirements.



★ Our Wuhan hospital facility, constructed at the outbreak of Covid-19 in Wuhan, China. A 1,000 bed facility built, ready for patient intake, within 10 days and the second in Shenzhen, 1,500 beds and completed in 20 days.

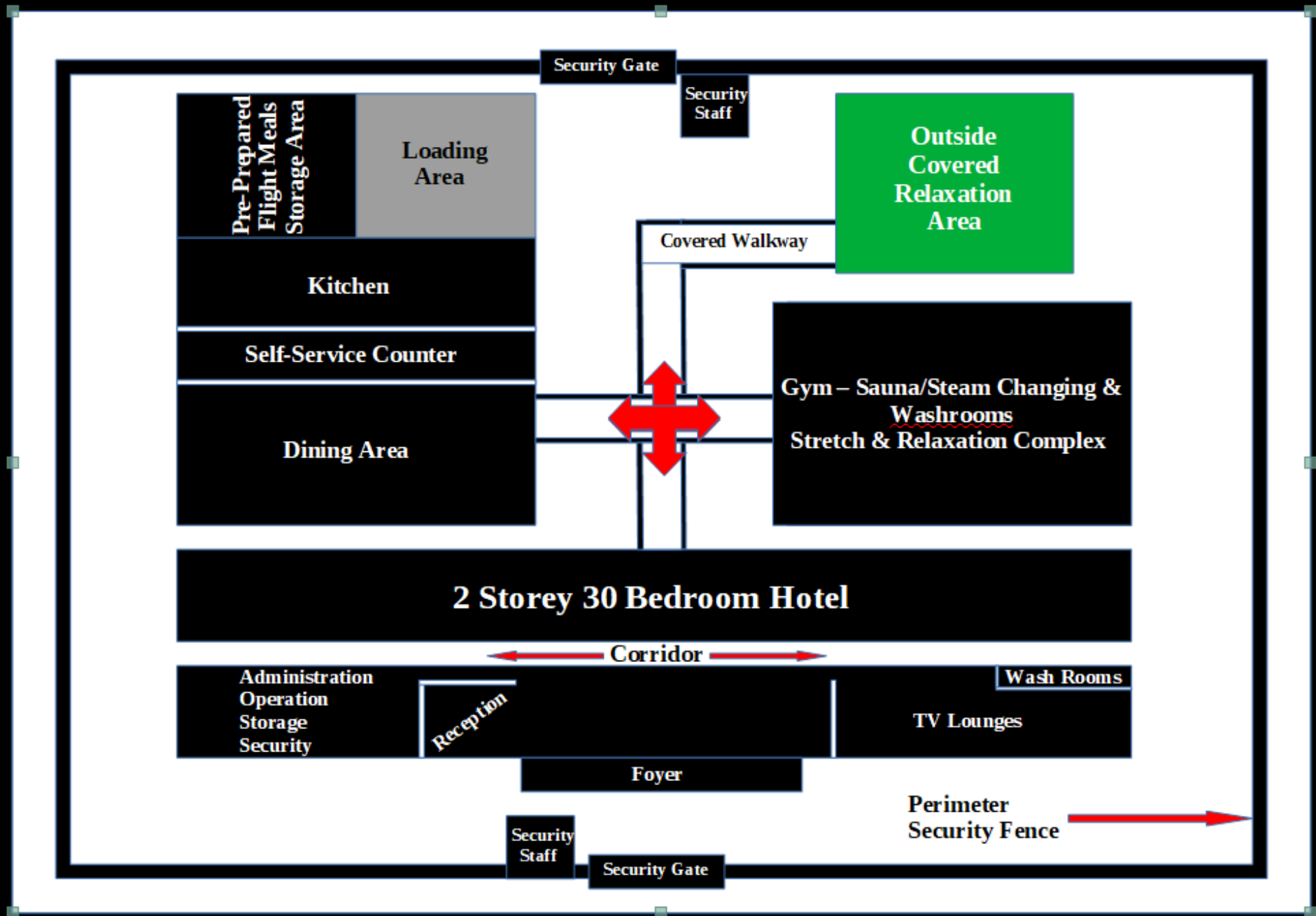
Complex Layout



GUESTS, AIRCREW & GROUND STAFF HOTEL - suggested layout

OUTER COMPLEX BUILDINGS:

- ★ 30 Bedroom Hotel
- ★ Gymnasium Area
- ★ Covered Walkways
- ★ Kitchen & Restaurant
- ★ Covered Outdoor Area
- ★ Security Posts & Gates
- ★ Perimeter Security Fence
- ★ Aircraft Meals Loading Area



1 or 2 Guests Room Configuration



AIRSTAYS HOTEL BEDROOM ACCOMMODATION

Accommodation Rooms ★

Each separate bedroom is 6 x 5 meters (30m²), calmly decorated with central overhead and individual bed lighting, electrical points with USB charging ports, and with a comfortable king size or twin beds which can accommodate one or two adults in Comfort. Rooms are equipped with bedside cabinets, dressing table, desk and chair, a comfortable lounge chair, wardrobe, fridge and a kettle. En-suite bathrooms all have showers, hand basins and toilets. All rooms will have a security window with top opening panel and curtains, a mirror and coat hooks, and will be accessible from a 1 meter-wide corridor with a security lock door, on either the ground or first floor.

The Kitchen and Restaurant ★

30m x 20m (600m²) with a commercial kitchen facility, guests self-service counter and 50 seater dining room. The kitchen will prepare and cook all meals for guests, airline crew and ground staff and also prepare all next day in-flight passenger meals to be placed in the adjacent refrigerated storage room for loading on board each flight before departure.

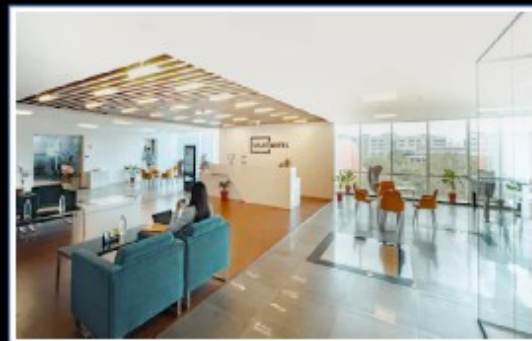
The Gymnasium Complex ★

30m x 20m (600m²), fully fitted leisure area featuring sauna and steam rooms, gymnasium, stretch/cool down area and full changing facilities.

The Covered Outdoor ★

The area is 15m x 15m (300m²) and provides exterior seating for up to 50 people.

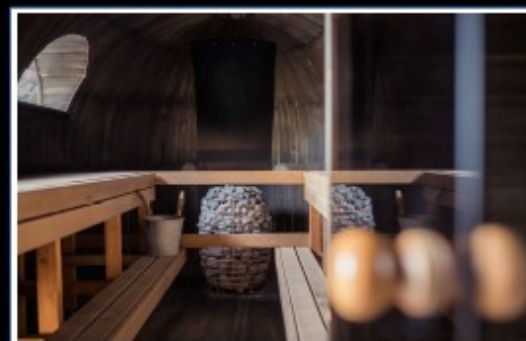
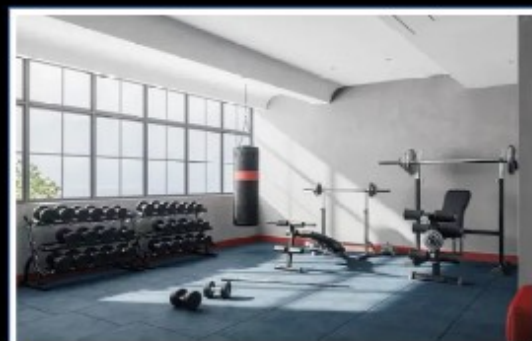
- * Reception
- * Restaurant
- * TV/Video Room



- * Washrooms
- * Shower Rooms
- * Secure Storage



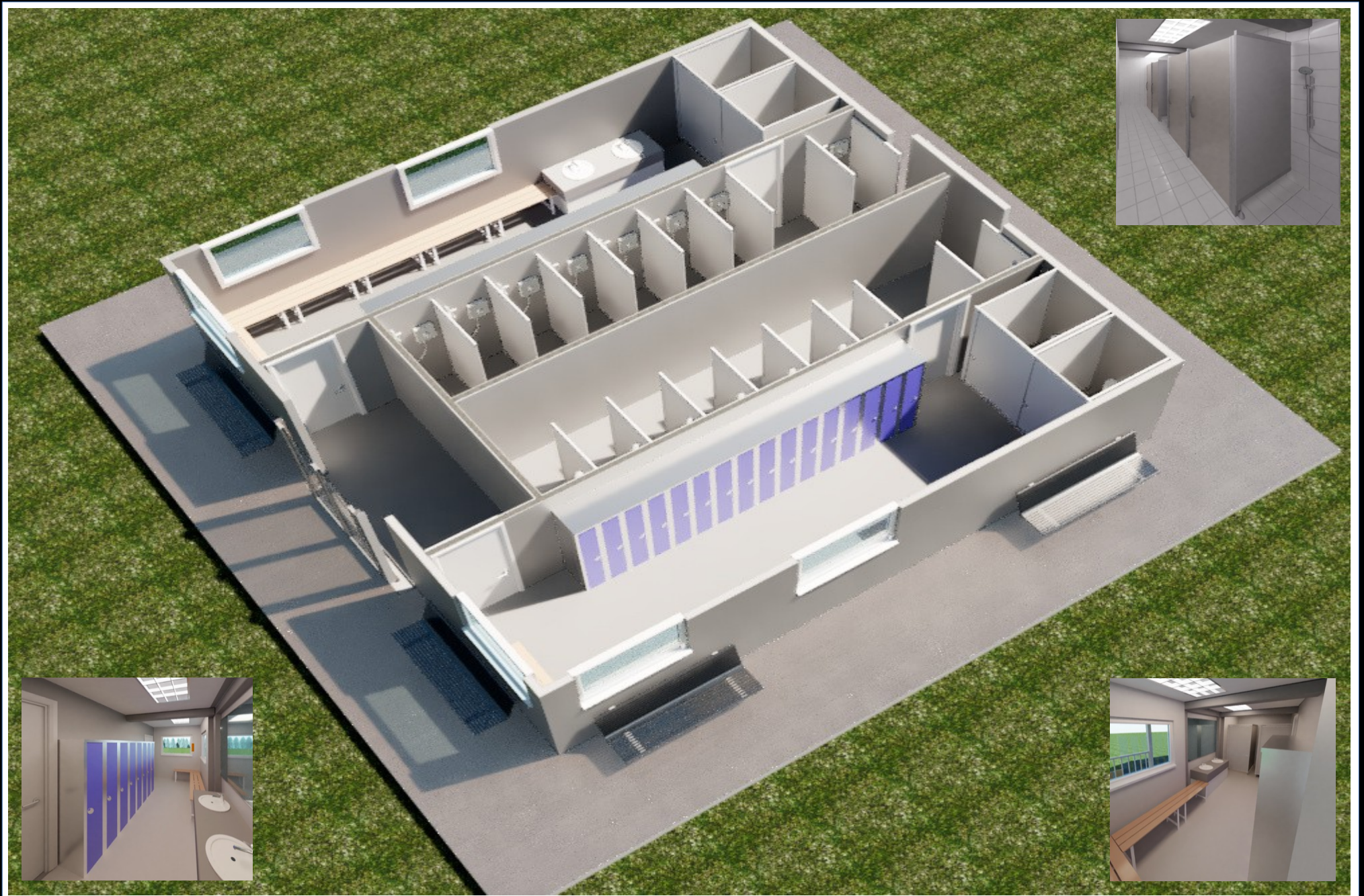
- * Gymnasium
- * Sauna/Steam
- * Outdoor Area



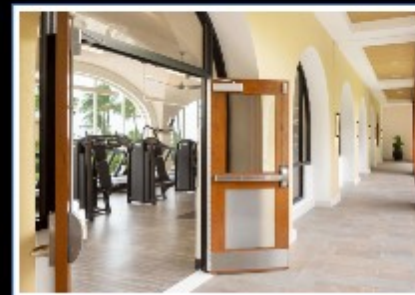
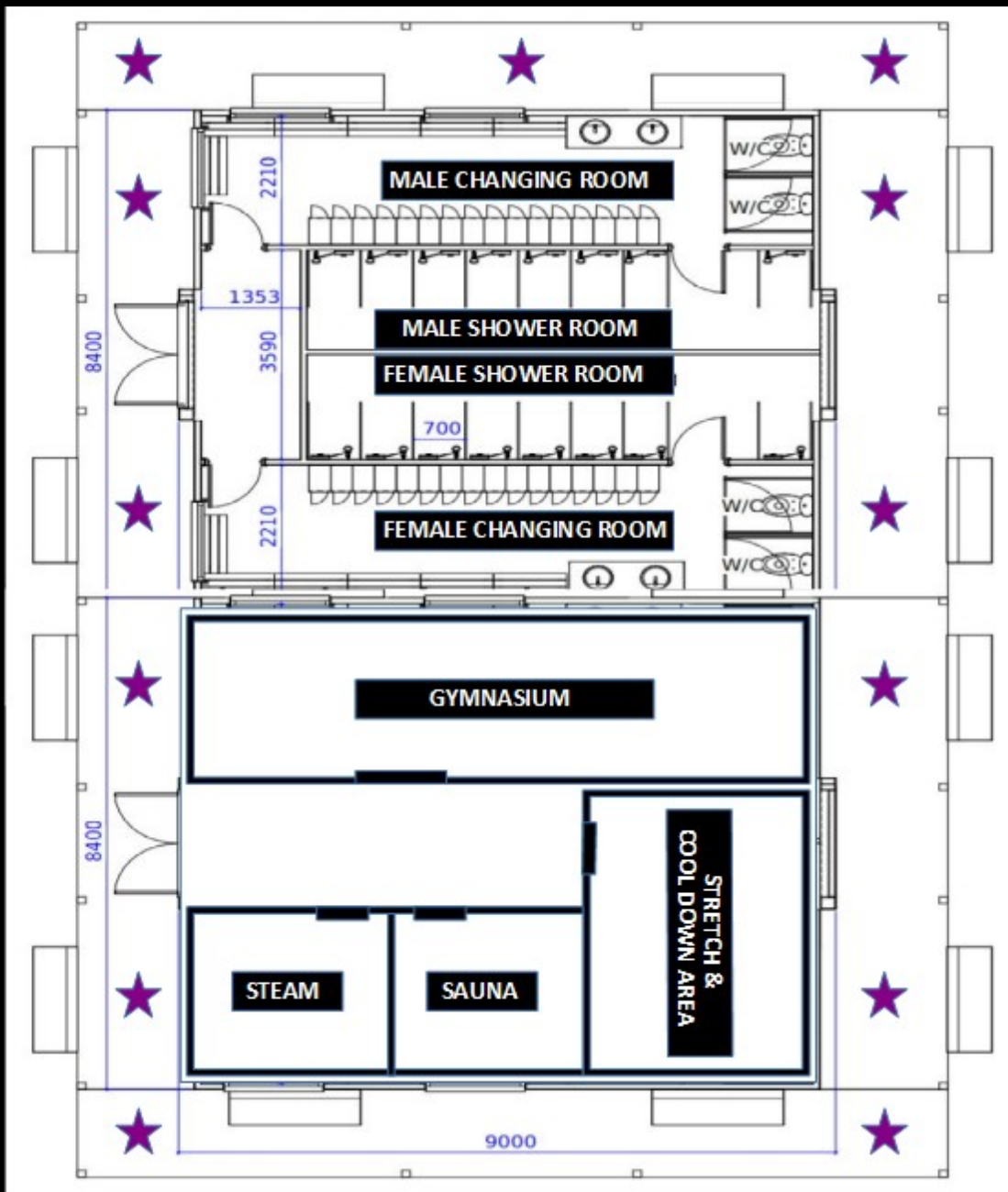
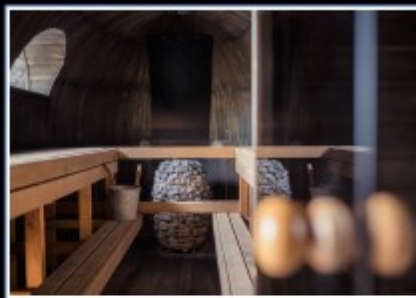
Changing Rooms

The PDQ range of changing rooms, with lockers, washbasins, toilets and shower facilities.
The Airstays Hotel also offers a gymnasium, stretch and cool down area and sauna & steam rooms.





★ COVERED OUTDOOR SEATING AREA



'T' System Specification



Item No: T04-AH

Hotel: Ground Floor 675m2, First Floor 675m2

Catering: Ground Floor 600m2,

Gym Complex: Ground Floor 600m2,

Exterior Covered Area: 300m2

Total Building Area: 2,850m2

MOQ: 100m2

Country of Origin: China

Long Lifespan and Reusable

Single or Double Storey Available

Colours: Custom Colours Available

Shipping Port: Guangzhou/Shenzhen

Fast Construction and Ease of Installation

Excellent Heat Insulation, Waterproof & Fireproof

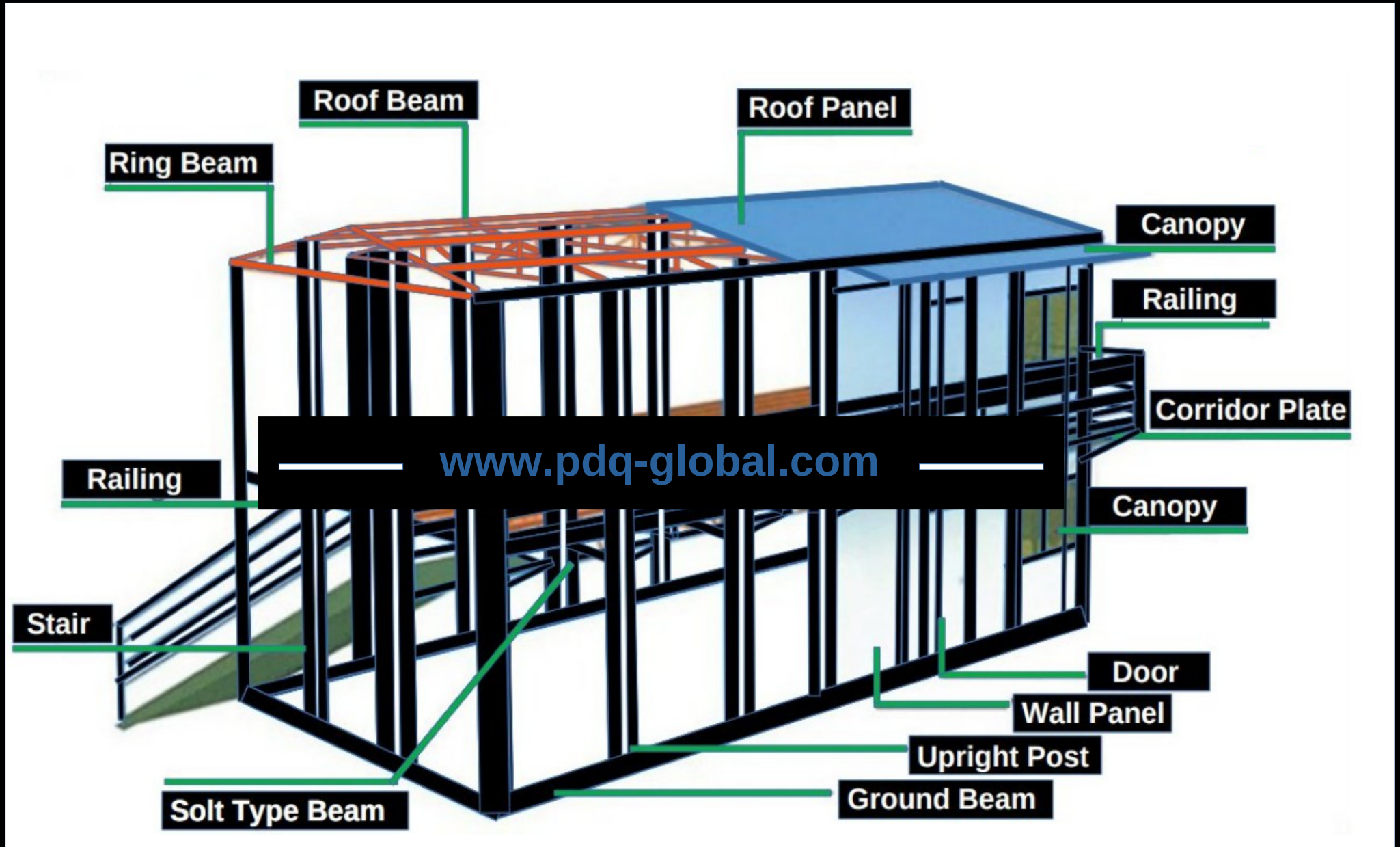
Lead Time: 15 -25 Days following receipt of P/O & Deposit Payment

Eco Friendly Materials Used for Construction & no on-site waste caused

Flexible Internal Layouts Available to Satisfy Differing Situation Requirements

<u>Item No:</u>	<u>Component</u>	<u>Specification</u>
	Wall Panel	50 Double Colour-Coated Steel <u>EPS</u> Sandwich Board (Steel: 0.286mm, <u>EPS</u> Density: 10kg)
	Roof Panel	50 Double Colour-Coated Steel <u>EPS</u> Sandwich Board (Steel: 0.286mm, <u>EPS</u> Density: 10kg) – Blue, White or Red
	Partition Wall	50 Double Colour-Coated Steel <u>EPS</u> Sandwich Board (Steel: 0.286mm, <u>EPS</u> Density: 10kg) + Aluminium Slot and Accessories
	Column	Double C-shaped Steel. Size: 80*40*1.8mm
	Roof Beam	C-shaped Steel. Size: 80*40*1.8mm & 50*40*1.8mm
	Tie Rod	CP8
	Ground Beam	Double C-shaped Steel. Size: 80*40*1.6mm
	Round Beam	Double C-shaped Steel. Size: 80*40*1.6mm
	Roof <u>Purlin</u>	Galvanized Angle Steel: 1.5m
	Door	50mm Double Colour-Coated Steel <u>EPS</u> Sandwich Door Size: 800*2,000mm
	Window	Plastic & Steel Window: 1,740*925mm

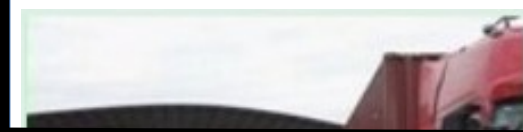
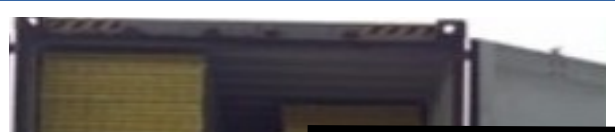
The Construction



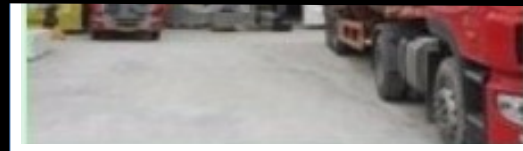


PDQ GLOBAL - the one-stop solution to problems

Packing & Shipping



www.pdq-global.com



1 x 40' HQ = 200m2 of 'T' System

-

Production Rate: 100,000m2 every 25 Days

Important Points

The PDQ Global team are always on hand to make the selection of which structure best suits a customer's particular requirements for any project and in order for us to facilitate speedy and smooth progress, we need to address the points as listed below.

General Issues

- Landscaping issues and aesthetic appeal on site.
- Is the building selected the ideal one for the proposed use by the customer.
- Is there a possibility that the customer will wish to add to the PDQ structure in the future?
- What is the proposed site layout with regard to existing buildings and finishes required to match other buildings on the site.
- Precise details of customers required layout and exterior and interior finish of PDQ structure with illustrative photos from customer of finishes if possible.

Access to Build Site

- Access for container lorry to site/or close to site.
- Consider possibility of over-lift of the PDQ structure to the site.
- Distance from proposed site of the PDQ structure to the access road.
- If the proposed site is to the rear of any building, is there access to the site, and what is the width/height of that access.
- Possible Health and Safety Issues/Hazards – Overhead power cables/Public safety concerns/Local Hazards/ Traffic conditions/Security on site.

Utilities

- Availability of access to deliver/install septic tank
- Local Authority restrictions in connecting to utilities.
- Position of possible sewer connection/site for septic tank
- Quality of supply (Water pressure/Electricity Ampere's available).
- Possibility of customer wanting to enlarge the supplied PDQ structure in the future.
- Location of mains water/electricity/sewage and distance from the PDQ structure proposed final site.

Contact Us:



Peter Hurst

Mobile: + 44 (0) 7743 948674 (UK)

Whatsapp: + 852 93073664 (Hong Kong)

Email: peterhurstpdq@gmail.com

**Hong Kong Office: UNITS 2804-7. 28th FLOOR, MAN YEE BUILDING,
68 DES VOEUX ROAD CENTRAL, HONG KONG.**

**WICKHAMS CAY II, ROAD TOWN, TORTOLA
VG1110, BRITISH VIRGIN ISLANDS.**

WWW.PDQ-GLOBAL.COM

