



**PDQ Global - F&B Hotspots**



# Introduction

Using our expertise and knowledge, PDQ Global have created a fast, affordable system of supplying units for the specific market area of the food and beverage and entertaining industries.

Our F&B structures offer pre fitted bars (and wash rooms if required), staff order collection areas ready for serving their customers and outside covered seating areas, and in some designs, roof patios and central piazzas, with electric heaters for autumn / winter, again in a series of available sizes and designs. These units, are constructed using our modular "container" system and create total internal area spaces of between 14.5m<sup>2</sup> to 81m<sup>2</sup> per structure with additional outer seating areas.

Our Click & Collect retail units with outer covered ordering and collection areas and internal stock storage and order preparation are available in several size and configurations.

Each complete unit is manufactured using our unique "expandable" system, allowing ease of shipping & local transportation to site and prior to expanding to the final usable area, only taking minimal space in a car park or establishments grounds. For example our 25m<sup>2</sup> unit is delivered to site as a 6m x 2.5m or 14.5m<sup>2</sup> structure or a little larger than a double car parking space!

We manufacture at our China factory site and deliver these fully fitted units across the World. Requiring only simple "jackpad" foundations if on soft ground, pre-prepared prior to the unit's delivery, each PDQ Space arrives at site via HIAB low loader truck and is lifted into place via the onboard vehicles crane.



# The 'Expresso'

These portable units are designed for the F&B industry as fast, affordable, attractive "pop-up" spaces, perfect for providing coffee shops, bars and even restaurants with the extra space required in those busy summer months and especially during the cool autumn and cold winter months and the Christmas Festivities period.

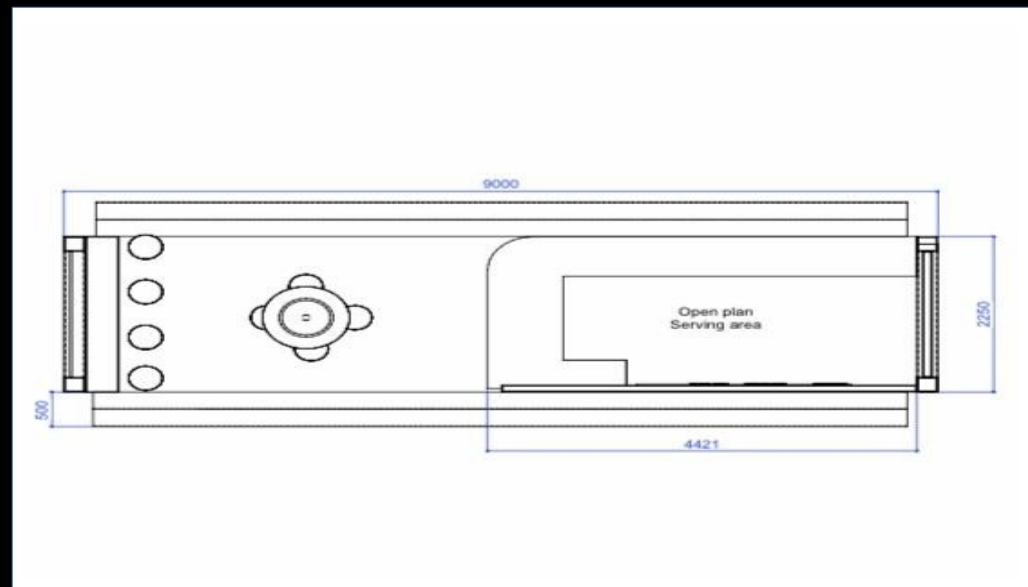
Available in a 14.0m<sup>2</sup> version and a 21.5m<sup>2</sup> one. The 'Expresso' is the "baby" of our range and the areas around the unit can be easily extended, providing covered and heated areas with fold down clear plastic side coverings, to create vital extra serving and customer seating areas, leading to increased footfall, turnover and profit.

Roller shutters can be provided and fitted if required. The Expresso delivers a fast and secure solution to extra space that is required by a business and delivery to client's site is via HIAB low loader transporter and units are easily movable between required locations if required.



# The Single 'Expresso'

These portable units, available in two sizes, a 27.5m<sup>2</sup> version and a 40.5m<sup>2</sup> one, include a fold up roof panel to the front and fold down floor, creating a retail pre fitted F&B space and covered ordering and collecting waiting areas. A further covered seating area can be added bringing an extra 12.6m<sup>2</sup> or 18.9m<sup>2</sup>, giving total retail spaces of 39.6m<sup>2</sup> or 59.4m<sup>2</sup>. The outside covered and floored areas can be extended, providing areas which can be heated in winter with fold down clear plastic sides, to create vital extra serving and seating areas, leading to increased footfall, turnover and profit.





# The Double 'Expresso'

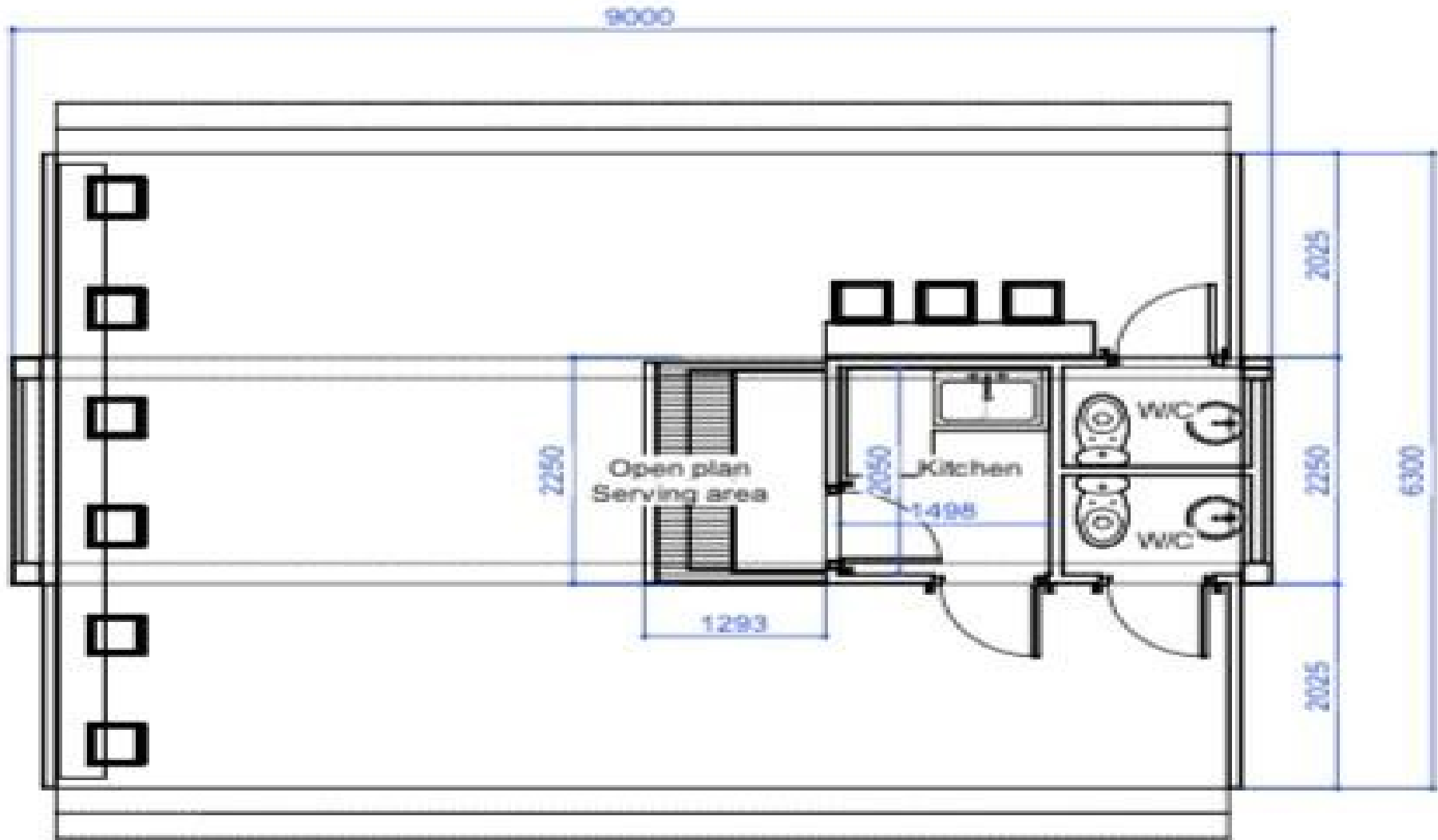
These larger units are available in 2 sizes, a 39.6m<sup>2</sup> version and a 59.4m<sup>2</sup> one, include a fold-up roof panel to the front the front elevation & fold down floor on each side of the central unit, creating a retail pre-fitted F&B space and covered ordering and collecting waiting areas. A further covered area can be added bringing an extra 25.2m<sup>2</sup> or 37.8m<sup>2</sup>, giving total spaces of 64.8m<sup>2</sup> or 97.2m<sup>2</sup>. The Double 'Expresso' is the largest of this style and can provide a covered upper roof seating terrace, either 14.4m<sup>2</sup> or 21.6m<sup>2</sup> in area, providing covered and heated areas with fold down clear plastic sides.

These units can also include a small preparation area or kitchen and either 2 toilets (male and female) or one larger unisex disabled toilet which can be used by all customers.

Delivery to client's site is via HIAB transporter and is easily movable between locations if required.



# Floorplan

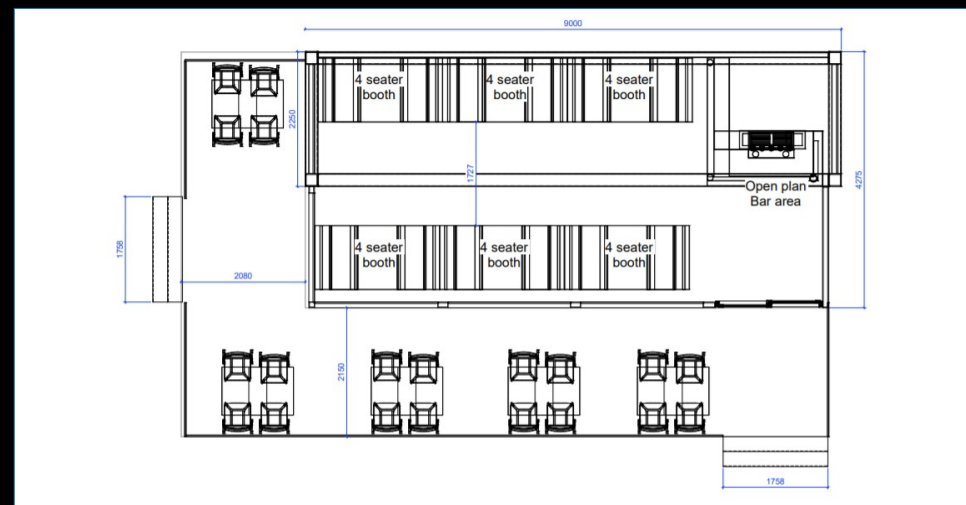
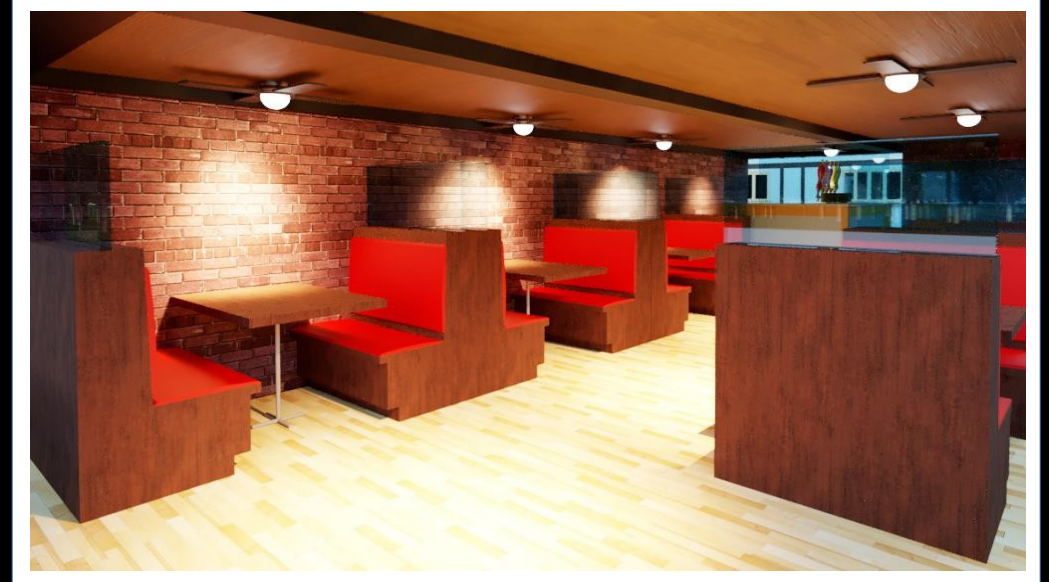




# The 9 Meter Single Shot + Veranda



The Hotspot Single Shot brings an internal usable area of 38.5m and an external veranda of 32m<sup>2</sup> with internal bar and staff collection and serving area and seating for 44 customers, 24 inside and 20 outside, all under cover from the elements and on cool evenings and in winter, kept warm by free standing electric heaters.

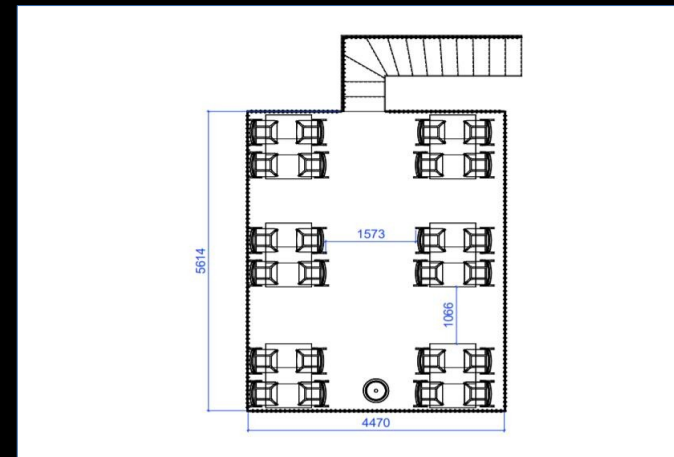
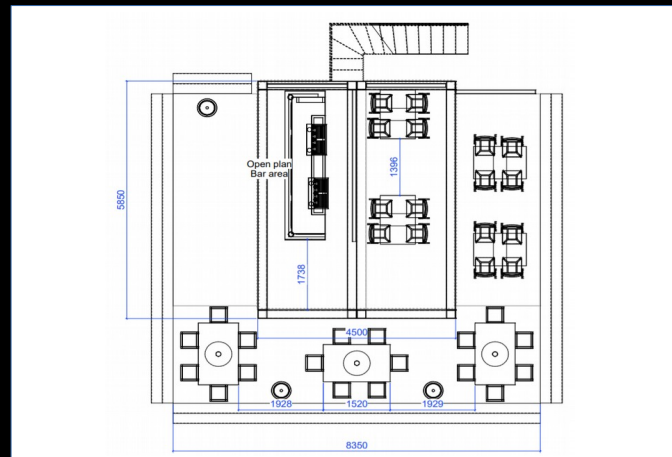
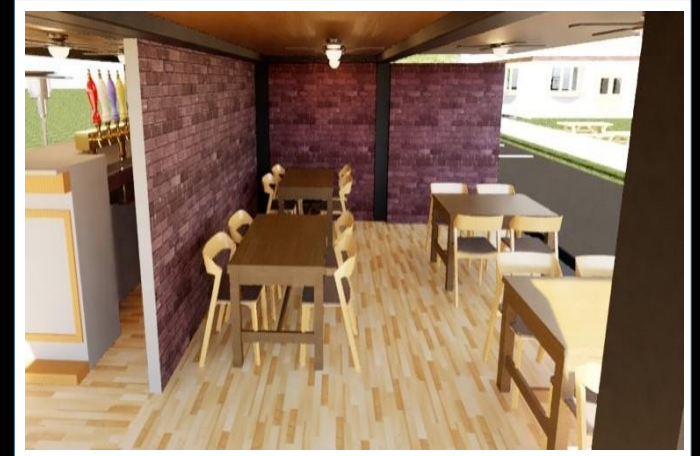




# 6 Meter Double Shot + Veranda & Roof Terrace



The Hotspot Double Shot 6M brings an internal usable area of 26m<sup>2</sup>, an external ground floor veranda of 23m<sup>2</sup> and roof terrace of 25m<sup>2</sup> with internal bar and staff collection and serving area and seating for 58 customers, 34 inside and 24 outside all under cover from the elements and on cool evenings and in winter, kept warm by electric heaters. The roof terrace has metal stairs for access and canvas cover and roll down clear sides to bring a cosy, safe and relaxing atmosphere.

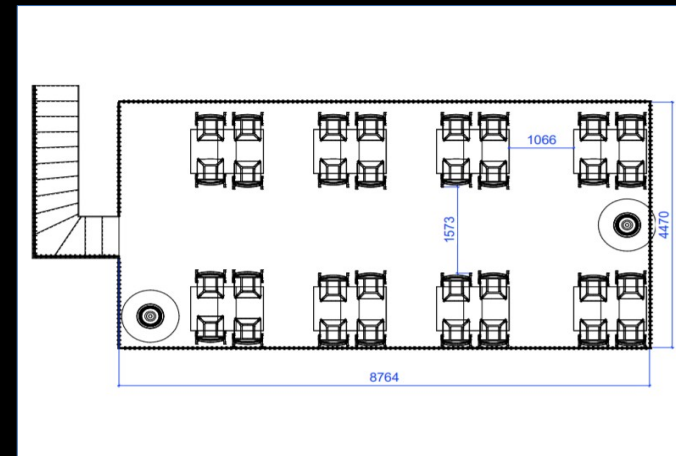
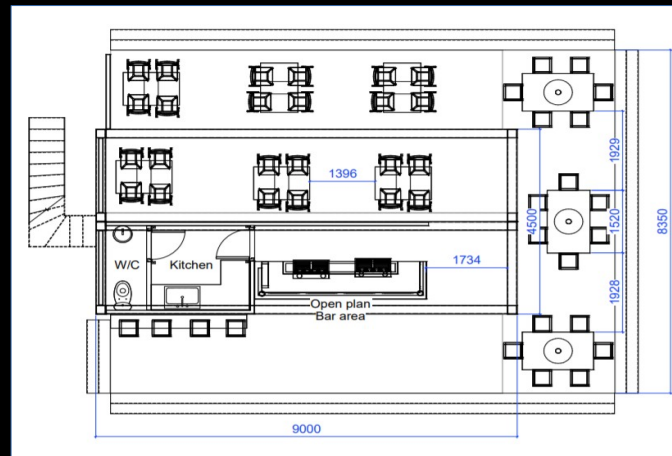




# 9 Meter Triple Shot + Veranda & Roof Terrace



The Hotspot Triple Shot 9M brings an internal usable area of 40m<sup>2</sup>, an external ground floor veranda of 35m<sup>2</sup> and roof Terrace of 39m<sup>2</sup> with internal bar and staff collection and serving area, kitchen and staff washroom and seating for 58 customers, 24 inside and 22 outside and 32 on the roof terrace, all under cover from the elements and on cool evenings and in kept warm by electric heaters. The roof terrace has metal stairs for access and canvas cover and roll down clear sides to bring a cosy, safe and relaxing atmosphere.

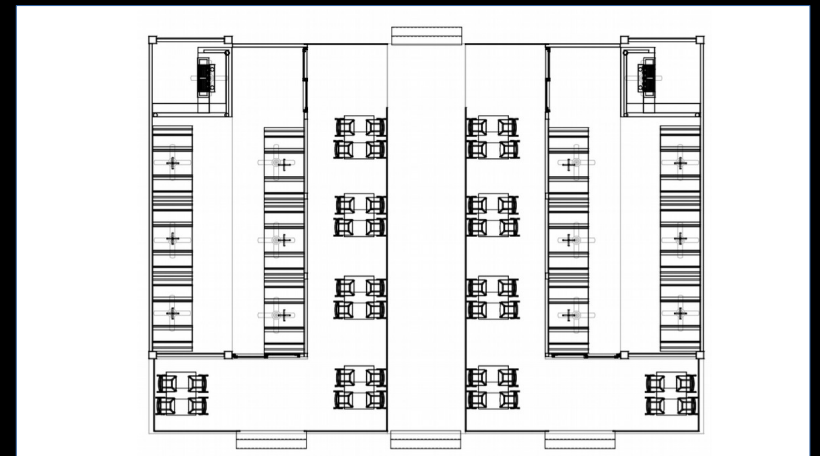
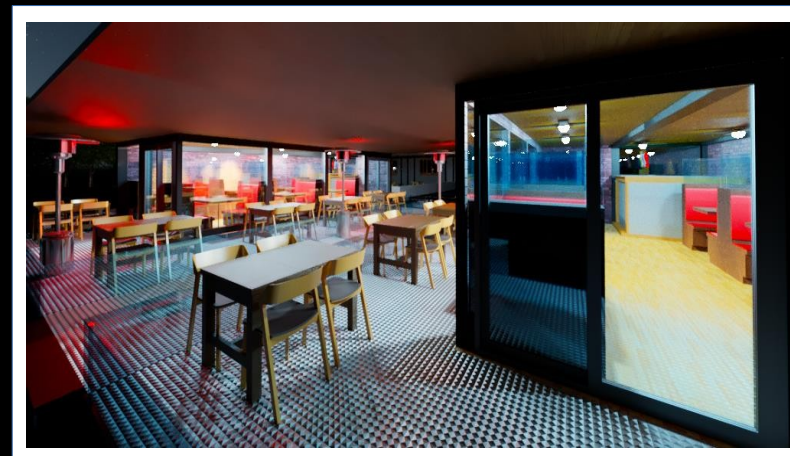
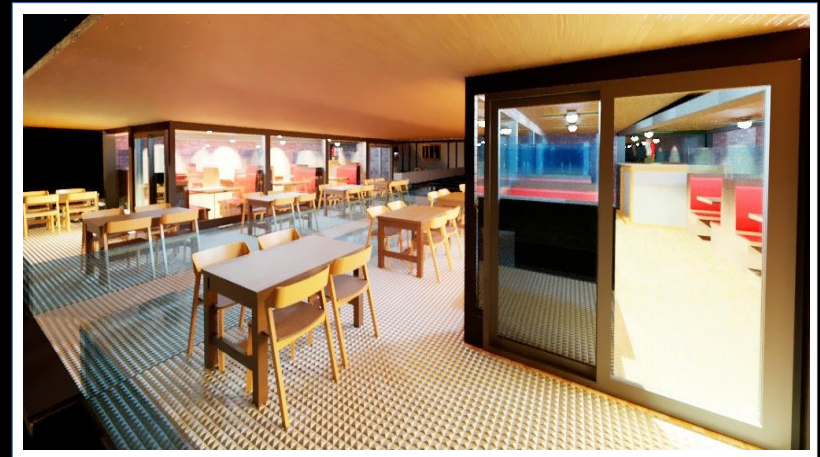




# 9 Meter 'Piazza', + Veranda & Central Piazza



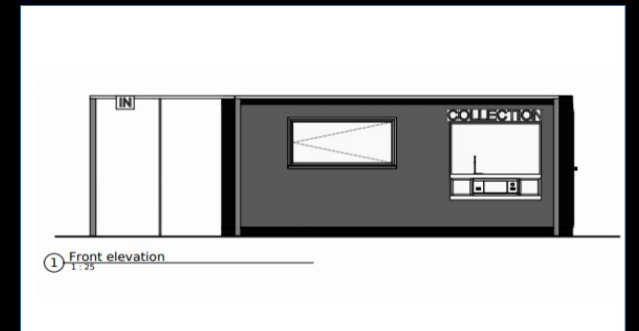
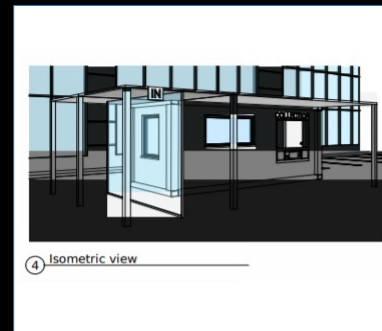
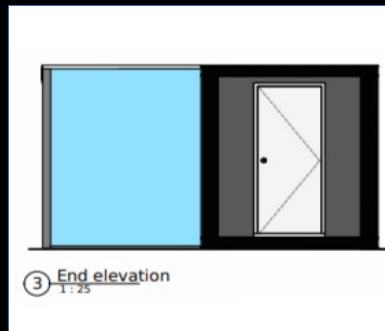
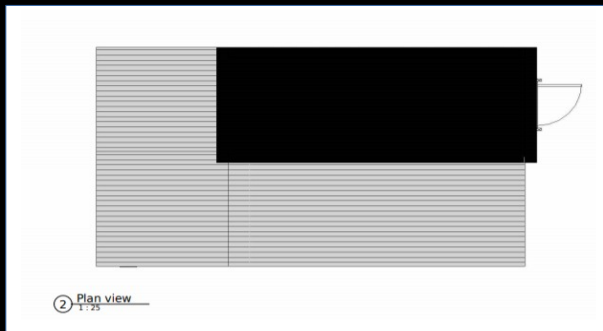
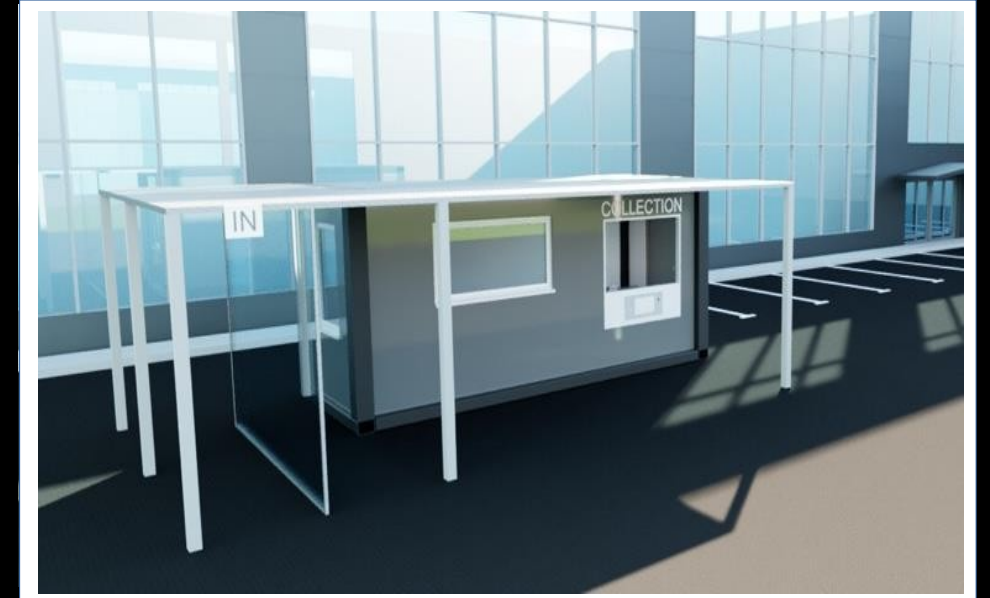
**The Hotspot - 9M Piazza - allows an internal usable area of 83m<sup>2</sup>, an external ground floor veranda of 100m<sup>2</sup>, which includes the central "Piazza" 60m<sup>2</sup> with internal bar and staff collection and serving area and seating for 88 customers, 48 inside and 40 outside, all under cover from the elements and on cool evenings and in winter, kept warm by electric heaters. Roll down clear sides add to the cosy, safe and relaxing atmosphere.**





# The Hex - X-Tra

These portable units, available in 2 sizes, a 14.5m<sup>2</sup> version and a 22.5m<sup>2</sup> one, include fold-up roof panels on all 4 sides with supporting pillars, creating a retail Click & Collect sales space and covered ordering and collecting waiting areas. Total exterior covered areas are either 42.5m<sup>2</sup> or 57.5m<sup>2</sup>, giving total retail spaces of 57m<sup>2</sup> or 80m<sup>2</sup>. The Hex X-Tra is the 'baby' of our range, with the largest space being the Hex - Ultra at 81m<sup>2</sup> interior and exterior covered area of 42.5m<sup>2</sup> giving a total retail space of 123.5m<sup>2</sup>.



# Product Information

- **PVC Floors supplied**
- **Insulated to a high standard**
- **Lighting/sockets/wiring supplied**
- **1 x fork lift if available for ease of unloading**
- **Simple steel and concrete pillar foundations**
- **Affordable - quotation available upon request.**
- **4 full units\* delivered to site in 1 x 40' HQ Container**
- **Lightweight - Each total unit\* approximately -**
- **Outer covered walkways on individual or each building side.**
- **Fully adjustable configurations, to suit individual hospital requirements**
- **All products conform to Regulations: 305/2001/EU & EN1090-1 + A1: 2011**
- **Each 4 Bed, 2 Wash room unit\*: Size approx: L9m x W6.3m, Total area 56m2**
- **Internal walls, doors, windows etc supplied to design requirements required**
- **All aluminium framed, double glazed external doors and windows supplied ex factory**
- **Additional exterior cladding and decoration options and costs are available upon request**
- **Ex factory wall colours available Brown, White and Dark Grey (see images), framing available White, Dark Grey, Brown and Black**
- **Speed of Project Delivery: 20 days factory manufacturing time, 30 - 45 days shipping, on-site assembly and final internal fitting , 10 days.**



# Important Points

The PDQ Team are always on hand to make the selection of which structure best suits a customer's particular requirements for any project and in order for us to facilitate speedy and smooth progress, we need to address the points as listed below.

## General Issues

- Landscaping issues and aesthetic appeal on site.
- Is the building selected the ideal one for the proposed use by the customer.
- Is there a possibility that the customer will wish to add to the PDQ structure in the future?
- What is the proposed site layout with regard to existing buildings and finishes required to match other buildings on the site.
- Precise details of customers required layout and exterior and interior finish of PDQ structure with illustrative photos from customer of finishes required if possible.

## Access to Build Site

- Access for container lorry to site/or close to site.
- Consider possibility of over-lift of the PDQ structure to the site.
- Distance from proposed site of the PDQ structure to the access road.
- If the proposed site is to the rear of any building, is there access to the site, and what is the width/height of that access.
- Possible Health and Safety Issues/Hazards – Overhead power cables/Public safety concerns/Local Hazards/ Traffic conditions/Security on site.

## Utilities

- Availability of access to deliver/install septic tank
- Local Authority restrictions in connecting to utilities.
- Position of possible sewer connection/site for septic tank
- Quality of supply (Water pressure/Electricity Ampere's available).
- Possibility of customer wanting to enlarge the supplied PDQ structure in the future.
- Location of mains water/electricity/sewage and distance from the PDQ structure proposed final site.

# Contact Us:



**Peter Hurst**

**Mobile: + 44 (0) 7743 948674 (UK)**

**Whatsapp: + 852 93073664 (Hong Kong)**

**Email: [peterhurstpdq@gmail.com](mailto:peterhurstpdq@gmail.com)**

**Hong Kong Office: UNITS 2804-7. 28<sup>th</sup> FLOOR, MAN YEE BUILDING,  
68 DES VOEUX ROAD CENTRAL, HONG KONG.**

**Head Office: WICKHAMS CAY II, ROAD TOWN, TORTOLA  
VG1110, BRITISH VIRGIN ISLANDS.**

**[WWW.PDQ-GLOBAL.COM](http://www.pdq-global.com)**

