



EVERGREEN ENTITY PTY LTD

Company Profile

BUILDING BUSINESSES, GROWING COMMUNITIES..

@EVERGREEN ENTITY





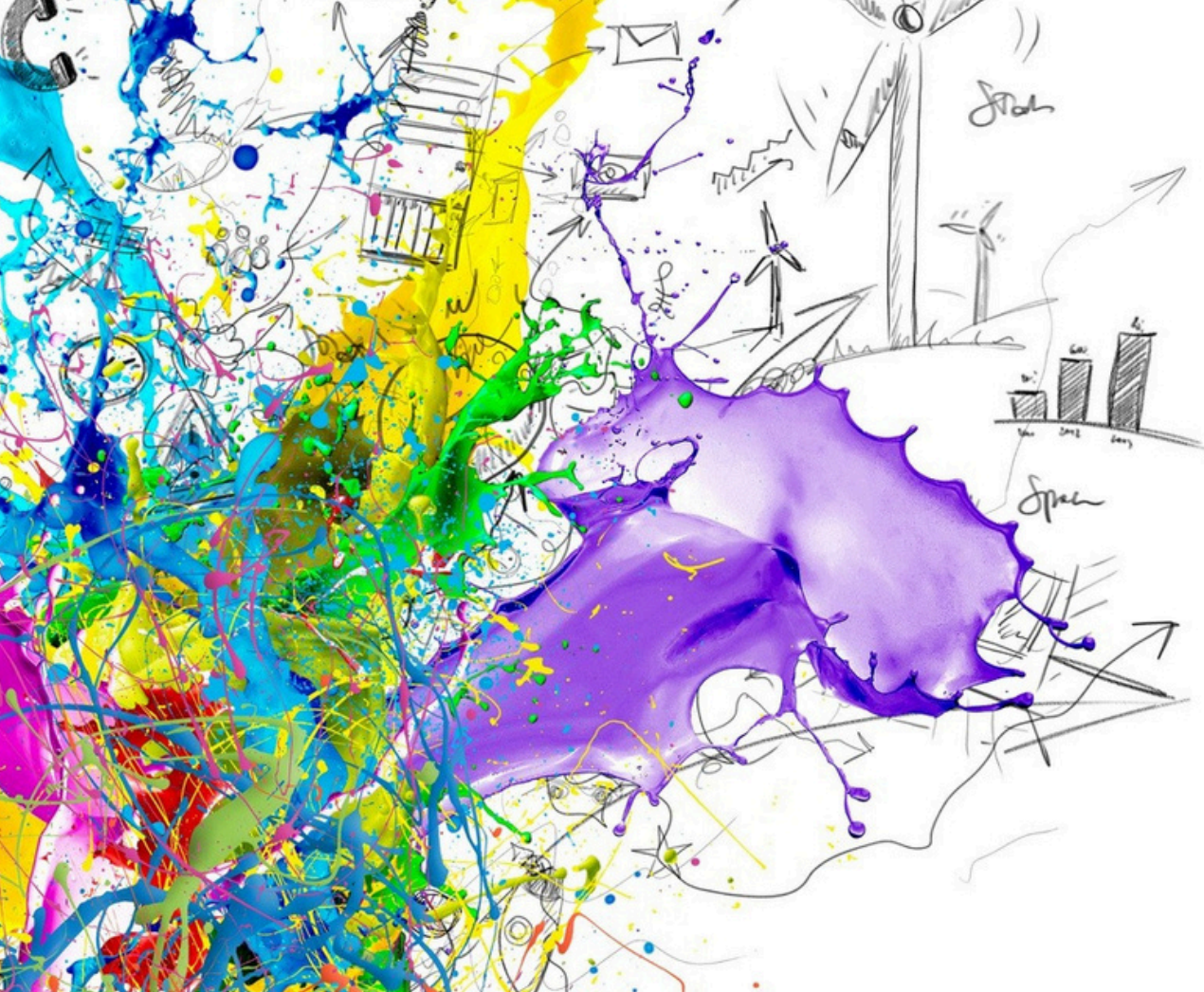
Who We Are

At Evergreen Entity (Pty) Ltd, we pride ourselves on being a progressive, proudly South African company focused on innovation, excellence, and sustainability. Founded in 2023 and officially registered in 2024, we are a 100% black female-owned enterprise and a Level 1 B-BBEE contributor.

We are dedicated to providing innovative, sustainable, and multi-sector solutions throughout South Africa. Our operations emphasise quality, empowerment, and community development.

Our mission is to empower businesses with creative solutions and reliable products that drive growth and success. As a 100% black-owned and female-led company, we are passionate about fostering economic transformation while delivering exceptional value to our clients.

With a commitment to quality and customer satisfaction, we take pride in being a trusted partner for businesses looking to thrive in today's competitive landscape.



Company Overview

B-BBEE Status: Level 1 Contributor (135% Procurement Recognition)
Ownership: 100% Black-Owned, 100% Black Female Ownership

Evergreen Entity (Pty) Ltd is a 100% black female-owned, Level 1 B-BBEE enterprise committed to delivering sustainable, innovative, and multi-sector solutions across South Africa. Established in 2023 and officially registered in 2024, the company operates with a strong focus on quality, empowerment, and community development.

Our diversified operations span crop and livestock farming, organic herbal product production, import and export of consumables, marketing and advertising, graphic design, corporate gift branding, cleaning services, painting, and stationery supply. This unique combination of services allows us to meet the needs of clients across industries while creating opportunities for local economic growth.

At Evergreen Entity, we are driven by a vision to blend business excellence with social impact, ensuring that every project we undertake contributes to a thriving economy, a healthier environment, and empowered communities.



Vision and Mission

Vision: To be a leading multi-sector enterprise in South Africa, delivering sustainable agricultural, trade, creative, and corporate solutions that empower businesses, uplift communities, and preserve the environment for future generations.

Mission: Is to provide high-quality, sustainable products and services across diverse sectors — from crop and livestock farming, organic herbal products, and consumables trade, to creative branding, marketing, and corporate services.

We are committed to:

- Driving economic transformation through 100% black female-owned leadership.
- Promoting sustainability in farming and eco-friendly product sourcing.
- Offering innovative, customer-focused solutions that meet evolving market needs.
- Uplifting local communities through job creation, skills development, and ethical practices.

Services Offered

TRADE & SUPPLY

- Import & export of consumables
- Stationery supply and distribution
- Corporate gifts and branding
- Cleaning equipment and products

CREATIVE & MARKETING SERVICES

- Brand strategy and campaigns
- Digital marketing and social media management
- Graphic design (logos, packaging, brochures, signage)
- Advertising (print, outdoor, online, media buying)

AGRICULTURE & NATURAL HEALTH

- Crop Farming (maize, vegetables, and other agricultural produce)
- Livestock Farming (poultry, goats, pig and ducks)
- Organic herb cultivation
- Herbal/traditional medicinal products

CORPORATE & MAINTENANCE SERVICES

- Office and facility cleaning services
- Painting services (residential and commercial)
- Corporate gift branding





Competitive Advantage

Evergreen Entity (Pty) Ltd stands out as a multi-sector enterprise that delivers value through diversity, quality, and sustainability. Our competitive edge is built on the following strengths:

- **Diverse Service Offering:** From crop and livestock farming to corporate branding, marketing, and consumables trade, we provide clients with a complete, end-to-end solution under one trusted brand.
- **Sustainability Focus:** We incorporate organic farming methods and eco-friendly product sourcing to protect the environment and promote healthier communities.
- **100% Black Female Ownership:** As a Level 1 B-BBEE contributor, we help clients meet procurement targets while driving meaningful economic transformation.
- **Cross-Industry Expertise:** Our ability to operate successfully in agriculture, trade, creative industries, and corporate services gives us flexibility to adapt to diverse client needs.
- **Community Development:** We prioritise local sourcing, job creation, and skills development to uplift rural and underdeveloped areas.
- **Quality and Reliability:** We deliver consistent, high-standard products and services that build long-term trust with clients.

At Evergreen Entity, our strength lies in our versatility — enabling us to serve multiple industries while maintaining a single, unified commitment to excellence and impact.

Our Home

We're not your typical walk-in office. We are an online-first business, built for convenience, flexibility, and modern customer needs. Whether you want to meet face-to-face or prefer a virtual meeting, or simply need us to deliver, we meet you where you are.

But our roots? They're right here, where the sun rises strongest. Below is our exact location on the map, the home of our purity, our process, our passion, and our promise to you.

Evergreen Entity Farm — Kamaqhekeza, Nkomazi, Mpumalanga

Latitude: -25.643772

Longitude: 31.913607

or 25°38'37.6"S 31°54'49.0"E



EVERGREEN ENTITY PTY LTD

Evergreen Entity (Pty) Ltd is positioned to contribute significantly to the listed sectors while driving economic transformation and empowering communities. With a foundation of excellence.

Contact

Email: Info@evergreenentity.com
Phone: +27 67 007 4369
www.evergreenentity.com

@EVERGREEN ENTITY

