

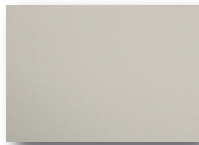
# STATION GRILL TE36

with Keon Dekton countertop

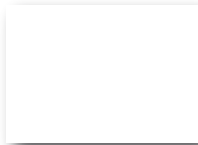


**Length: 88.5" | Depth: 36" | Height: 36"**

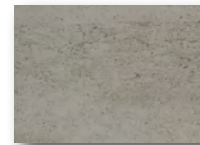
For flooring with a slope exceeding 1/2 inch, it is advisable to order taller side panels and toe kicks, which can be trimmed to fit on-site. For flooring with a slope of less than 1/2 inch, no adjustment is required.



**Doors & facade**  
Collection PUR - Tuscan



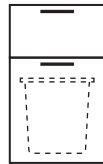
**Side & back panels**  
Aluminum - Matte White



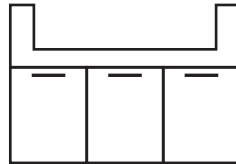
**Countertop**  
Dekton 20mm - Keon



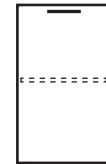
**Handle**  
Stainless Steel



**18" Cabinet**  
1x Drawer  
1x Pull-out with 2 bins



**48" Grill Cabinet**  
3x Doors  
Integrated water drainage system  
keeps content completely dry.



**18" Cabinet**  
1x Door  
and 1x Shelf

Includes 36" Twin Eagles grill + insulated jacket

**\$22,450**

+ Tax + Shipping + Installation (optional)



# STATION GRILL TE36

with Keon Dekton countertop



**Length: 88.5" | Depth: 36" | Height: 36"**

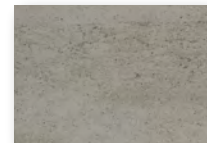
For flooring with a slope exceeding 1/2 inch, it is advisable to order taller side panels and toe kicks, which can be trimmed to fit on-site. For flooring with a slope of less than 1/2 inch, no adjustment is required.



**Doors & facade**  
Collection PUR - Black



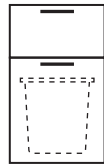
**Side & back panels**  
Aluminum - Matte Black



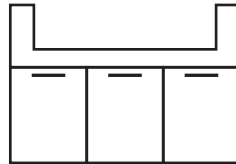
**Countertop**  
Dekton 20mm - Keon



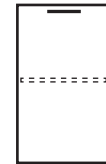
**Handle**  
Stainless Steel



**18" Cabinet**  
1x Drawer  
1x Pull-out with 2 bins



**48" Grill Cabinet**  
3x Doors  
Integrated water drainage system  
keeps content completely dry.



**18" Cabinet**  
1x Door  
and 1x Shelf

Includes 36" Twin Eagles grill + insulated jacket

**\$22,450**

+ Tax + Shipping + Installation (optional)



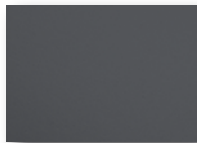
# STATION GRILL TE36

with Keon Dekton countertop



**Length: 88.5" | Depth: 36" | Height: 36"**

For flooring with a slope exceeding 1/2 inch, it is advisable to order taller side panels and toe kicks, which can be trimmed to fit on-site. For flooring with a slope of less than 1/2 inch, no adjustment is required.



**Doors & facade**  
Collection PUR - Charcoal



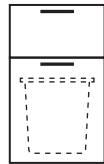
**Side & back panels**  
Aluminum - Matte Charcoal



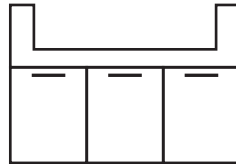
**Countertop**  
Dekton 20mm - Keon



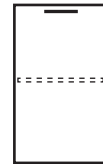
**Handle**  
Stainless Steel



**18" Cabinet**  
1x Drawer  
1x Pull-out with 2 bins



**48" Grill Cabinet**  
3x Doors  
Integrated water drainage system  
keeps content completely dry.

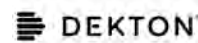


**18" Cabinet**  
1x Door  
and 1x Shelf

Includes 36" Twin Eagles grill + insulated jacket

**\$22,450**

+ Tax + Shipping + Installation (optional)



# Specifications, Installation & Grill Options

## INSTALLATION

Pre-assembled system for fast installation

Can be deployed with basic installation skills

Requires standard electrical connection and gas supply for natural gas configurations.

## GAS COMPATIBILITY

These systems can run on standard propane tanks for quick deployment, or connect to natural gas for permanent installations.

Pricing is identical for **LP (propane)** and **NG (natural gas)** configurations.

## GRILL FEATURES

### Materials & Build

- Seamless heli-arc welded 304 stainless steel construction with high-polished detailing
- 14-gauge stainless steel burners delivering 25,000 BTU each
- Precision-engineered 5-part grilling system for consistent heat control

### Cooking Performance

- 3/8" electro-polished hexagonal stainless steel grates for superior heat retention and searing
- Integrated smoker box for added flavor versatility
- Optional charcoal tray system for hybrid grilling capability

### Experience & Details

- Illuminated control bezels with Indigo blue temperature indicators
- Concealed rotisserie system for clean design and uniform performance
- Motion-activated interior lighting for night operation
- Smooth hood assist system for effortless handling
- Designed and manufactured in Southern California





## GRILL CONFIGURATION

Designed for immediate deployment in hospitality environments, with minimal installation complexity and premium guest-facing presentation.

## INCLUDED

36" Twin Eagles Gas Grill (shown in Picture)

## UPGRADE OPTIONS

Infrared Rotisserie .....+\$770  
 Rotisserie + Sear Zone .....+\$1,040

**In-stock premium systems ready for immediate deployment, with the option to develop fully customized outdoor kitchen projects tailored to each property.**

