

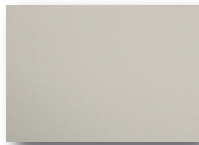
STATION GRILL DH32

with Keon Dekton countertop

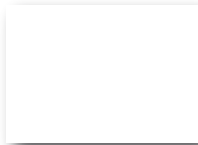


Length: 84.75" | Depth: 36" | Height: 36"

For flooring with a slope exceeding 1/2 inch, it is advisable to order taller side panels and toe kicks, which can be trimmed to fit on-site. For flooring with a slope of less than 1/2 inch, no adjustment is required.



Doors & facade
Collection PUR - Tuscan



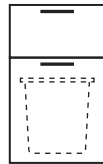
Side & back panels
Aluminum - Matte White



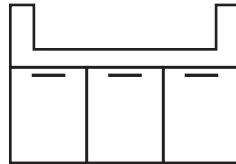
Countertop
Dekton 20mm - Keon



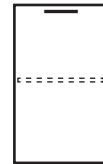
Handle
Stainless Steel



18" Cabinet
1x Drawer
1x Pull-out with 2 bins



45" Grill Cabinet
3x Doors
Integrated water drainage system
keeps content completely dry.

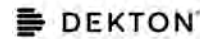


18" Cabinet
1x Door
and 1x Shelf

Includes 32" Delta Heat grill + insulated jacket

\$16,995

+ Tax + Shipping + Installation (optional)



STATION GRILL DH32

with Keon Dekton countertop



Length: 84.75" | Depth: 36" | Height: 36"

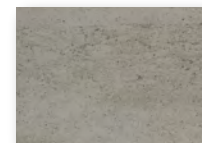
For flooring with a slope exceeding 1/2 inch, it is advisable to order taller side panels and toe kicks, which can be trimmed to fit on-site. For flooring with a slope of less than 1/2 inch, no adjustment is required.



Doors & facade
Collection PUR - Black



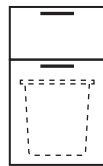
Side & back panels
Aluminum - Matte Black



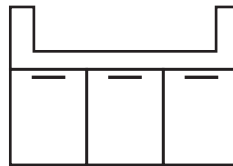
Countertop
Dekton 20mm - Keon



Handle
Stainless Steel



18" Cabinet
1x Drawer
1x Pull-out with 2 bins



45" Grill Cabinet
3x Doors
Integrated water drainage system
keeps content completely dry.



18" Cabinet
1x Door
and 1x Shelf

Includes 32" Delta Heat grill + insulated jacket

\$16,995

+ Tax + Shipping + Installation (optional)



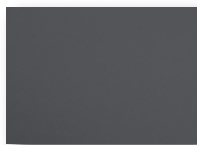
STATION GRILL DH32

with Keon Dekton countertop



Length: 84.75" | Depth: 36" | Height: 36"

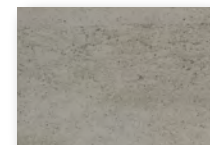
For flooring with a slope exceeding 1/2 inch, it is advisable to order taller side panels and toe kicks, which can be trimmed to fit on-site. For flooring with a slope of less than 1/2 inch, no adjustment is required.



Doors & facade
Collection PUR - Charcoal



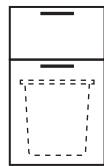
Side & back panels
Aluminum - Matte Charcoal



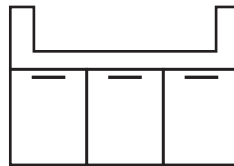
Countertop
Dekton 20mm - Keon



Handle
Stainless Steel



18" Cabinet
1x Drawer
1x Pull-out with 2 bins



45" Grill Cabinet
3x Doors
Integrated water drainage system
keeps content completely dry.



18" Cabinet
1x Door
and 1x Shelf

Includes 32" Delta Heat grill + insulated jacket

\$16,995

+ Tax + Shipping + Installation (optional)



Specifications, Installation & Grill Options

INSTALLATION

Pre-assembled system for fast installation

Can be deployed with basic installation skills

Requires standard electrical connection and gas supply for natural gas configurations.

GAS COMPATIBILITY

These systems can run on standard propane tanks for quick deployment, or connect to natural gas for permanent installations.

Pricing is identical for **LP (propane)** and **NG (natural gas)** configurations.

GRILL FEATURES

Materials & Build

- 304 stainless steel construction
- Double-lined hood
- 18-gauge U-burners

Cooking Performance

- High-performance cooking grates
- Oversized warming rack

Experience & Details

- Interior halogen lighting
 - LED illuminated Panel
 - Available finishes
 - NG & Propane compatible
 - Made in California
-



GRILL CONFIGURATION

Designed for immediate deployment in hospitality environments, with minimal installation complexity.

INCLUDED

32" Delta Heat Gas Grill

UPGRADE OPTIONS

Infrared Rotisserie+\$760

Color Edition with Rotisserie+\$870

Rotisserie + Sear Zone+\$910

Color Edition + Sear Zone+\$1,020

In-stock systems ready for immediate deployment, with the option to develop fully customized outdoor kitchen projects when required.