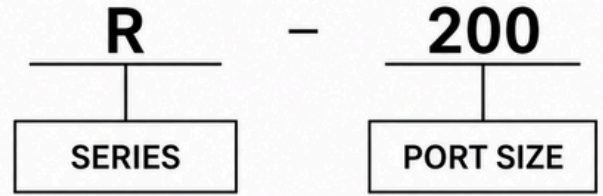


R Series

**ORDER CODE**

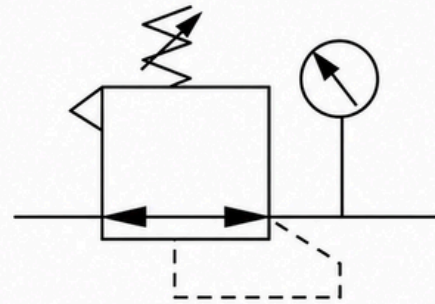


200: G1/4

300: G3/8

400: G1/2

**SYMBOL**



MODEL	R-200	R-300	R-400
PORT SIZE	G1/4	G3/8	G1/2
WORKING MEDIA	COMPRESSED AIR		
PRESSURE RANGE	0.5-1.2 Mpa		
MAX.PROOF PRESSURE	1.6 Mpa		
RATED FLOW	1500 L/MIN	3200 L/MIN	3500 L/MIN
AMBIENT TEMPERATURE	5-60°C		
FIXING MODE	TUBE INSTALLATION OR BRACKET INSTALLATION		
MATERIAL	BODY: ZINC ALLOY		

MODEL	E3	E4	E5	E6	E8	E9	F1	F2	F3 Φ	F4	F5 Φ	F6 Φ	L1	L2	L3	L4
R-200	40	39	76	95	64	52	G1/4	M36X1.5	31	M4	4.5	40	44	35	11	MAX 3
R-300	55	47	93	112	85	70	G3/8	M52X1.5	50	M5	5.5	52	71	60	22	MAX 5
R-400	55	47	93	112	85	70	G3/8	M52X1.5	50	M5	5.5	52	71	60	22	MAX 5