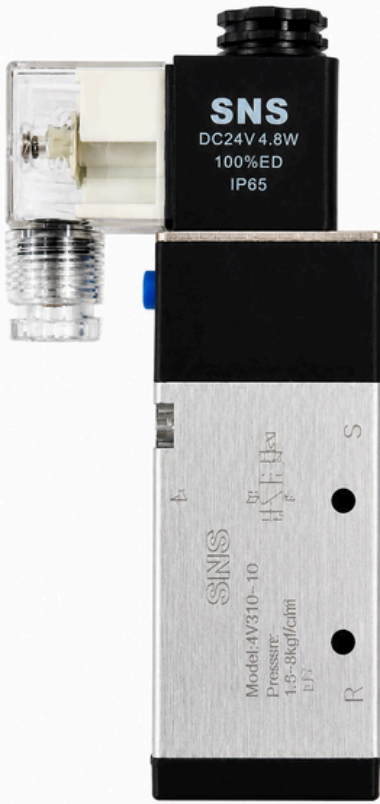
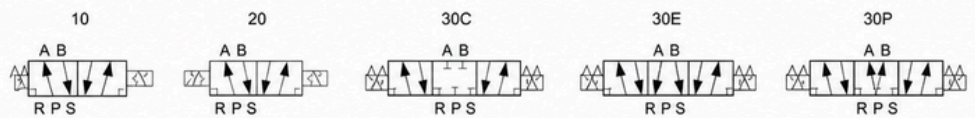


SOLENOID VALVE

4V SERIES



Symbol



Order Code



4V	3	10	-	10	/	AC220V	W
Specification Code	Series	Coil & Position		Port Size	Voltage	Guide the way	
5/2(3) Port Solenoid Valve	3:300 Series	10: Single Coil Double Position 20: Double Coil Double Position 30C: Double Coil Three-position Closed Type 30E: Double Coil Three-position Exhaust Type 30P: Double Coil Three-position Pressurized Type		08: G1/4 10: G3/8	DC12V DC24V AC24V 50/60Hz AC110V 50/60Hz AC220V 50/60Hz AC380V 50/60Hz	Blank: Internally guided W: Externally guided	

Model	4v310-084v320-08	4v330c-08	4v330e-08	4v330p-08	4v310-10	4v320c-10	4v330c-10	4v330e-10	4v330p-10
Working Media	Air								
Action Mode	Internal Pilot Type								
Position	5/2Post	5/3Port			5/2Port		5/3Port		
Effective Sectional Area	25.0mm ² (Cv=1.40)	18.0mm ² (Cv=1.00)			30.0mm ² (Cv=1.68)		18.0mm ² (Cv=1.00)		
Port Size	Input=Output=Exhaust Post=G1/4				Input=Output=G3/8, Exhaust Post=G1/4				
Lubrication	No Need								
Working Pressure	0.15~0.8Mpa								
Proof Pressure	1.0Mpa								
Working Temperature	0~60°C								
Voltage Range	±10%								
Power Consumption	AC:5.5VA DC:4.8W								
Insulation Grade	F Level								
Protection Class	IP65(DIN40050)								
Connecting Type	Plug Type								
Max.Operating Frequency	5Cycle/Sec	3Cycle/Sec			5Cycle/Sec		3Cycle/Sec		
Min.Excitation Time	0.05Sec								
Material	Body	Aluminum Alloy							
	Seal	NBR							

Model	A	B	C	D	E
4V310-08	G1/4	G1/4	21	28.8	3
4V310-10	G1/4	G3/8	24	27.5	4
4V320-08	G1/4	G1/4	21	83.8	3
4V320-10	G1/4	G3/8	24	82.5	4
4V330-08	G1/4	G1/4	21	83.8	3
4V330-10	G1/4	G3/8	24	82.5	4