

# SOLENOID VALVE

## 4A SERIES



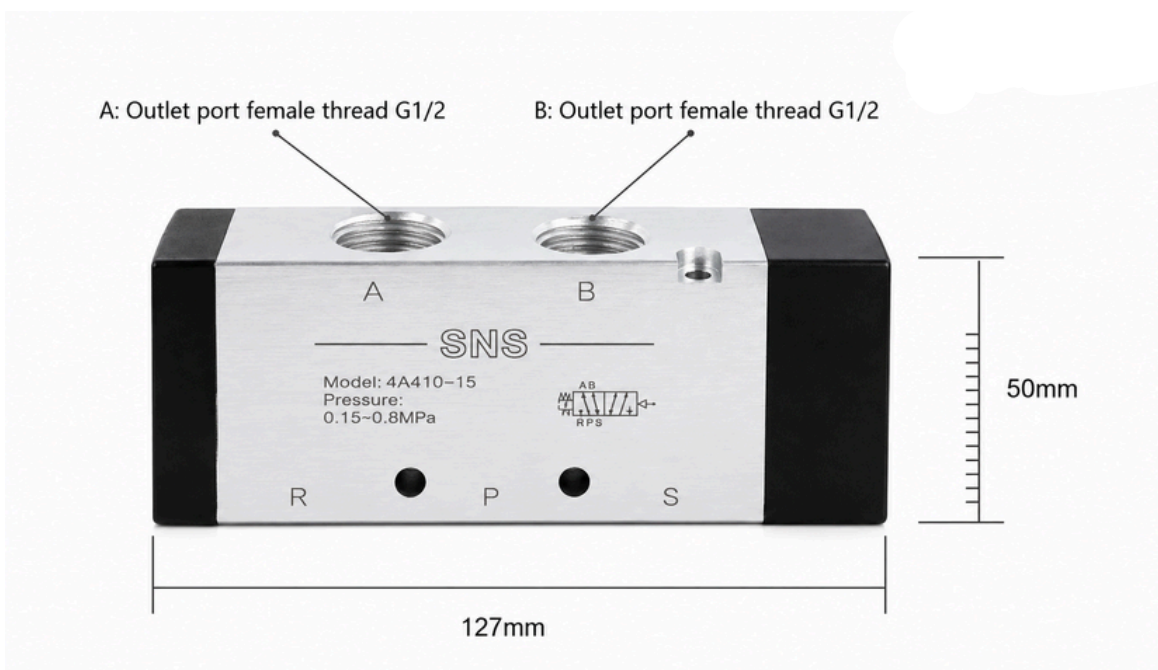
### Solenoid Valve – 4A Series

The SNS 4A Series Pneumatic Solenoid Valve is a high-performance 5-way air control valve designed for reliable pneumatic automation and industrial air control applications.

Manufactured with precision engineering and durable materials, this valve delivers stable operation, excellent pressure resistance, and long service life.

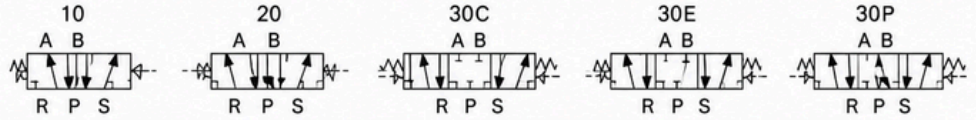
Featuring a compact and lightweight structure, the 4A Series valve is easy to install and suitable for a wide range of pneumatic systems. Its smooth operation and fast response ensure efficient air flow control for demanding industrial environments.

Designed with excellent wear resistance and reliable sealing performance, the valve provides dependable operation even during continuous use. The 3-position 5-way configuration offers accurate directional control, making it ideal for automated machinery and pneumatic control systems.








# 4A1 Series

## Symbol



## Order Code

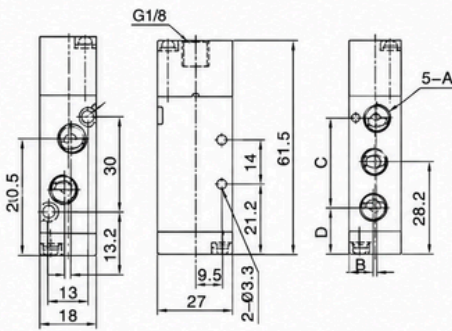
<b>4A</b>	<b>1</b>	<b>10</b>	<b>06</b>
Specification Code	Series	Coil Position	Port Size
5/2 Port Solenoid Valve	1: 100 Series	 10: Single Coil Double Position  20: Double Coil Double Position  30C: Double Coil Three Position Closed Type  30E: Double Coil Three Position Exhaust Type  30P: Double Coil Three Position Pressurized Type	M5: M5×0.8 06: G1/8

# Technical Specification

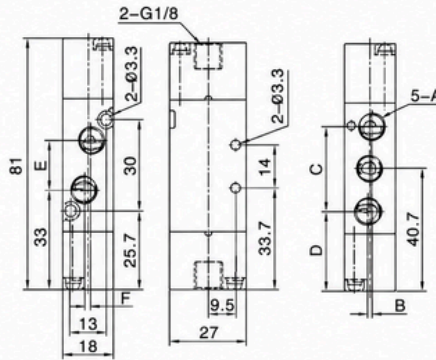
Model	4A110-M5	4A120-M5	4A130C-M5	4A130E-M5	4A130P-M5	4A110-06	4A120-06	4A130C-06	4A130E-06	4A130P-06
Working Media	Air									
Action Mode	ExteriorControl									
Position	5/2Port		5/3Port			5/2Port		5/3Port		
Effective Sectional Area	5.5mm <sup>2</sup> (Cv=0.31)		5.0mm <sup>2</sup> (Cv=0.28)			12.0mm <sup>2</sup> (Cv=0.67)		9.0mm <sup>2</sup> (Cv=0.50)		
Port Size	M5×0.8		INLET=OUTLET=EXHAUST PORT = M5×0.8			G=1/8 INLET=OUTLET=EXHAUST PORT = G1/8				
Lubrication	OIL FREE LUBRICATION									
Working Pressure	0.15~0.8MPa									
Proof Pressure	1.0MPa									
Working Temperature	0~60°C									
Max Operating Frequency	5 Cycle/Sec		3 Cycle/Sec			5 Cycle/Sec		3 Cycle/Sec		
Material	Body Aluminum Alloy									
	Seal NBR									

## Dimension

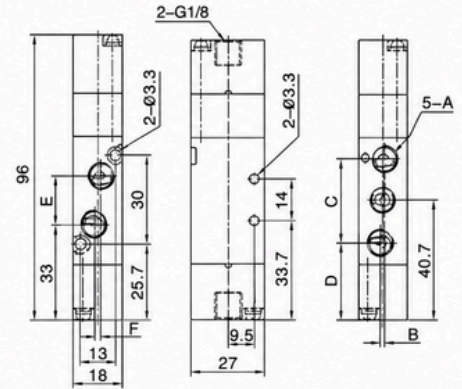
4A110-M5(06)



4A120-M5(06)



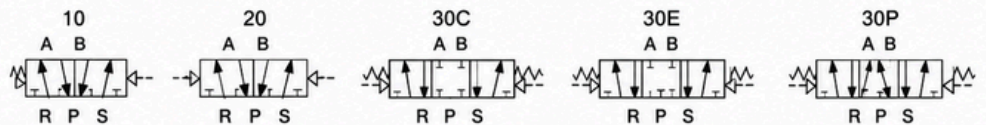
4A130-M5(06)



Model	A	B	C	D	E	F
4A110-M5	M5	0	27	14.7	13.6	0
4A110-06	G1/8	2	28	14.2	16	3
4A120-M5	M5	0	27	27.2	13.6	0
4A120-06	G1/8	2	28	26.7	16	3
4A130-M5	M5	0	27	27.2	13.6	0
4A130-06	G1/8	2	28	26.7	16	3

## 4A2 Series

### Symbol



### Order Code

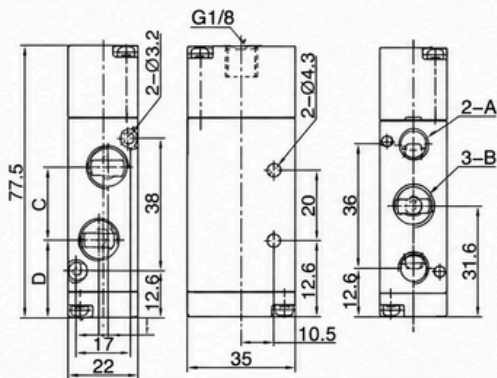
<b>4A</b>	<b>2</b>	<b>10</b>	<b>06</b>
Specification Code	Series	Coil Position	Port Size
5/2 Port Solenoid Valve	2: 200 Series	10: Single Coil Double Position	06: G1/8 08: G1/4
		20: Double Coil Double Position	
		30C: Double Coil Three Position Closed Type	
		30E: Double Coil Three Position Exhaust Type	
		30P: Double Coil Three Position Pressurized Type	

# Technical Specification

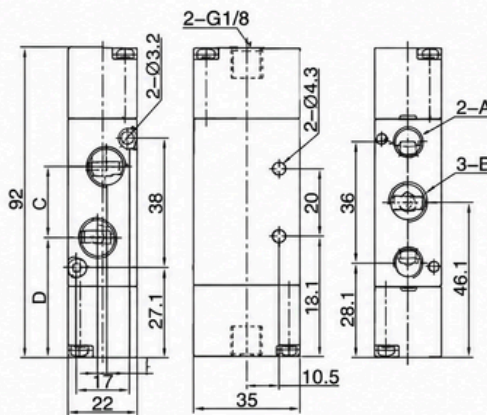
Model		4A210-06	4A220-06	4A230C-06	4A230E-06	4A230P-06	4A210-08	4A220-08	4A230C-08	4A230E-08	4A230P-08
Working Media		Air									
Action Mode		ExteriorControl									
Position		5/2Port		5/3Port			5/2Port		5/3Port		
Effective Sectional Area		14.0mm <sup>2</sup> (Cv=0.78)		12.0mm <sup>2</sup> (Cv=0.67)			16.0mm <sup>2</sup> (Cv=0.89)		12.0mm <sup>2</sup> (Cv=0.67)		
Port Size		G 1/8 =INLET=OUTLET=EXHAUST PORT = G 1/8					G 1/4 =INLET=OUTLET=G 1/4 G 1/8=EXHAUST PORT = G1/8				
Lubrication		OIL FREE LUBRICATION									
Working Pressure		0.15~0.8MPa									
Proof Pressure		1.0MPa									
Working Temperature		0~60°C									
Max Operating Frequency		5 Cycle/Sec		3 Cycle/Sec			5 Cycle/Sec		3 Cycle/Sec		
Material	Body	Aluminum Alloy									
	Seal	NBR									

## Dimension

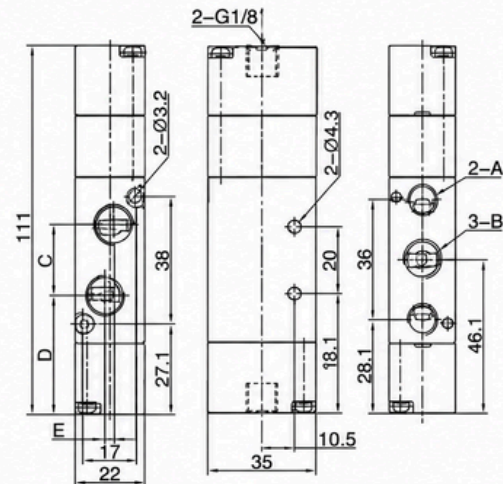
4A210-06(08)



4A220-06(08)



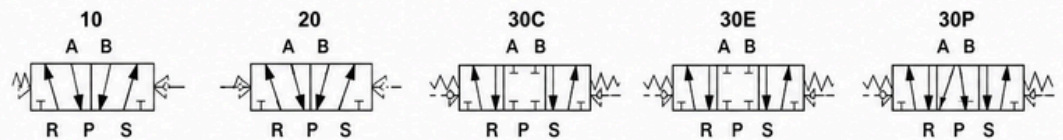
4A230-06(08)








Model	A	B	C	D	E
4A210-06	G1/8	G1/8	18	22.6	0
4A210-08	G1/8	G1/4	21	21	3
4A220-06	G1/8	G1/8	18	37.1	0
4A220-08	G1/8	G1/4	21	35.5	3
4A230-06	G1/8	G1/8	18	37.1	0
4A230-08	G1/8	G1/4	21	35.5	3

## 4A3 Series

### Symbol



### Order Code

4A	3	10	10
Specification Code	Series	Coil Position	Port Size
5/2 Port Solenoid Valve	3: 300 Series	 10: Single Coil Double Position	08: G1/4 10: G3/8
		 20: Double Coil Double Position	
		 30C: Double Coil Three Position Closed Type	
		 30E: Double Coil Three Position Exhaust Type	
		 30P: Double Coil Three Position Pressurized Type	

# Technical Specification

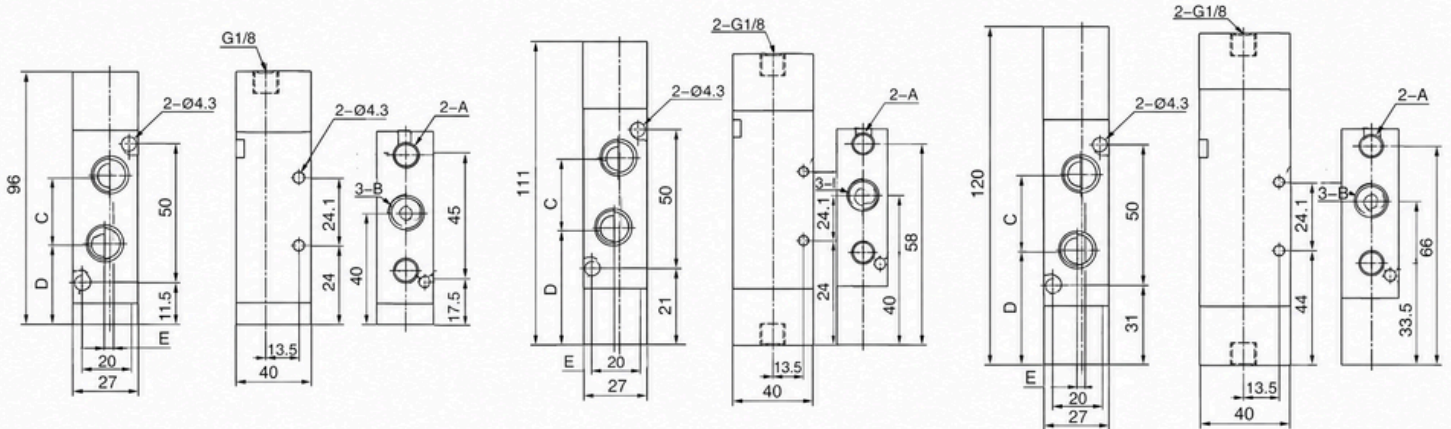
Model	4A310-08	4A320-08	4A330C-08	4A330E-08	4A330P-08	4A310-10	4A320-10	4A330C-10	4A330E-10	4A330P-10
Working Media	Air									
Action Mode	Exterior Control									
Position	5/2 Port		5/3 Port			5/2 Port		5/3 Port		
Effective Sectional Area	25.0mm <sup>2</sup> (Cv=1.40)		18.0mm <sup>2</sup> (Cv=1.00)			30.0mm <sup>2</sup> (Cv=1.68)		18.0mm <sup>2</sup> (Cv=1.00)		
Port Size	Inlet=G1/4 Exhaust Port=G1/4					Inlet=G3/8 Exhaust Port=G1/4				
Lubrication	Oil-Free Lubrication									
Working Pressure	0.15~0.8MPa 1.0MPa									
Proof Pressure	0~60°C									
Working Temperature										
Max Operating Frequency	5 Cycle/Sec		3 Cycle/Sec			5 Cycle/Sec		3 Cycle/Sec		
Material	Body	Aluminum Alloy								
	Seal	NBR								

## Dimension

4A310-08(10)

4A320-08(10)

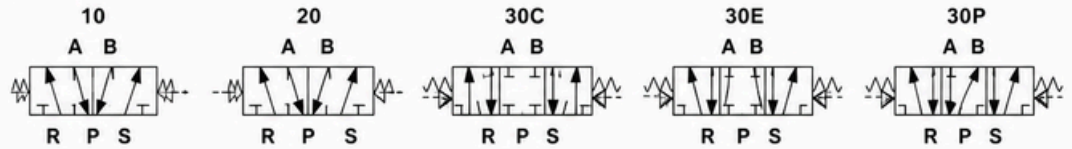
4A330-08(10)








Model	A	B	C	D	E
4A310-06	G1/4	G1/4	21	28.8	3
4A310-08	G1/4	G3/8	24	27.5	4
4A320-06	G1/4	G1/4	21	44.8	3
4A320-08	G1/4	G3/8	24	43.5	4
4A330-06	G1/4	G1/4	21	44.8	3
4A330-08	G1/4	G3/8	24	43.5	4

# 4A4 Series

## Symbol



## Order Code

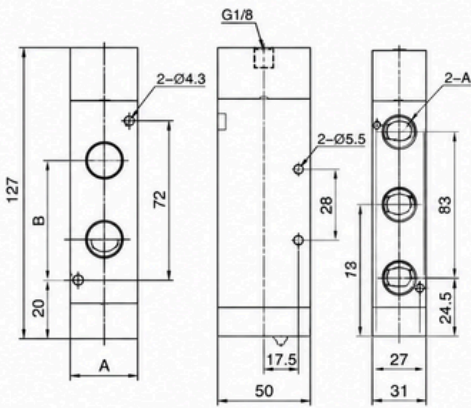
4A	4	10	15
Specification Code	Series	Coil Position	Port Size
5/2(3) Port Solenoid Valve	4: 400 Series	 10: Single Coil Double Position	10: G3/8 15: G1/2
		 20: Double Coil Double Position	
		 30C: Double Coil Three Position Closed Type	
		 30E: Double Coil Three Position Exhaust Type	
		 30P: Double Coil Three Position Pressurized Type	

## Technical Specification

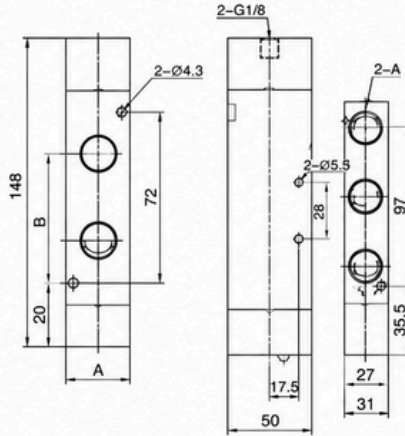
Model	4A410-15	4A420-15	4A430C-15	4A430E-15	4A430P-15
Working Media	Air				
Action Mode	Exterior Control				
Position	5/2 Port		5/3 Port		
Effective Sectional Area	50.0mm <sup>2</sup> (Cv = 2.79)		30.0mm <sup>2</sup> (Cv = 1.68)		
Port Size	G1/2				
Lubrication	Oil-Free Lubrication				
Working Pressure	0.15~0.8MPa				
Proof Pressure	1.0MPa				
Working Temperature	0~60°C				
Max Operating Frequency	5 Cycle/Sec		3 Cycle/Sec		
Material	Body	Aluminum Alloy			
	Seal	NBR			

## Dimension

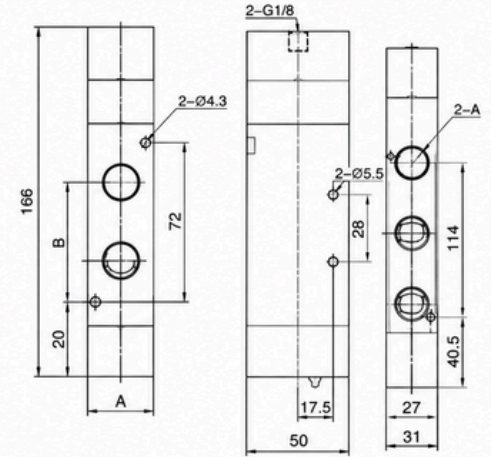
4A410-10(15)



4A420-10(15)



4A430-10(15)



Model	A	B	C	D
4A410-10	G3/8	33	39.5	2
4A410-15	G1/2	36	38	4
4A420-10	G3/8	33	54.5	2
4A420-15	G1/2	36	53	4
4A430-10	G3/8	33	54.5	2
4A430-15	G1/2	36	53	4