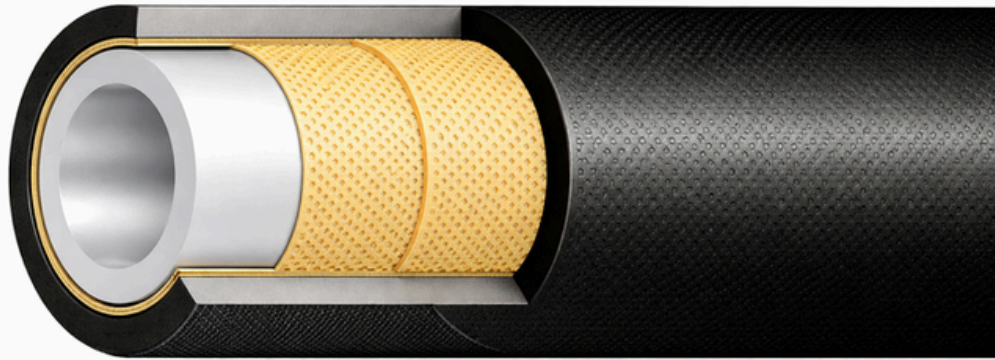


R7 HOSE



TUBE : Mineral, vegetable and hydraulic oil resistant special synthetic rubber
REINFORCEMENT : 2 high tensile steel wire braid.
COVER : Oil, abrasion, ozone and weather resistant special synthetic rubber.
APPLICATION : For medium-high pressure hydraulic systems using hydraulic oils, mineral and vegetable lubricants.



SEELE : Synthetischer Spezialgummi, beständig gegen mineralische und pflanzliche Hydrauliköle.
EINLAGE : 2 hochzugfeste Stahldrahtgeflechte.
DECKE : Abrieb-, öl-, ozon- und witterungsbeständiger spezieller synthetischer Gummi.
ANWENDUNG : Für Hydrauliksysteme mittlerer bis hoher Druckbereiche mit mineralischen und pflanzlichen Ölen.



SOTTOSTRATO : Gomma sintetica speciale resistente agli oli idraulici minerali e vegetali
RINFORZO : 2 trecce in acciaio ad alta resistenza.
COPERTURA : Gomma sintetica speciale resistente all'olio, all'abrasione, all'ozono ed agli agenti atmosferici.
IMPIEGO : Per sistemi idraulici a media-alta pressione con oli minerali e vegetali.










TUBE : Caoutchouc synthétique spécial, résistant aux huiles hydrauliques minérales et végétales.
REINFORCEMENT : 2 tresses en acier haute résistance.
REVÊTEMENT : Caoutchouc synthétique spécial, résistant à l'huile, à l'abrasion, à l'ozone et aux agents atmosphériques.
APPLICATION : Pour systèmes hydrauliques moyenne à haute pression avec huiles minérales et végétales.



R7 HOSE

TUBE:	Hydraulic Oils, Air and Water Based Fluids Resistant Polyester
REINFORCEMENT:	High Tensile 2 Polyester Fiber Braids
COVER:	Oil, Abrasion and Weather Resistant Polyurethane
APPLICATION:	For Air, Water, Mineral and/or Synthetic Oils Discharge at Medium-High Pressure
PERFORMANCE:	Pressed or Reusable
TEMPERATURE:	-40°C/+100°C, -40°F/+100°F

 ID		 OD		 WP		 BP		 BR		 W		 L	
<i>inch</i>	<i>mm</i>	<i>mm</i>	<i>bar</i>	<i>psi</i>	<i>bar</i>	<i>psi</i>	<i>mm</i>	<i>g/m</i>	<i>m</i>				
1/8	3.2	8	227	3292	908	13166	25	52	>10				
5/32"	4.1	9	250	3625	1000	14500	30	59	>10				
3/16"	5	9.5	230	3335	920	13340	35	64	>10				
1/4"	6.5	11.8	200	2900	800	11600	40	89	>10				
5/16"	8	14	190	2755	760	11020	50	121	>10				
3/8"	9.7	16.2	175	2538	700	10150	60	154	>10				
1/2"	13	20	150	2175	600	8700	80	214	>10				
5/8"	16.5	24	125	1813	500	7250	120	309	>10				
3/4"	19.5	27	100	1450	400	5800	150	308	>10				
1"	25	34	75	1088	300	4350	200	565	>10				



-40°C/+100°C

-40°F/+212°F

MARKING / BESCHRIFTUNG / MARCATURA / MARQUAGE: **TANSFER TAPE OR EMBOSSED**

POWERSTREAM+

SAE 100 R7 / EN 855 R7 (*) (DN ** mm) Max. W.P. * Bar / **** PSI**

NORMS
NORMEN
NORME
NORMES

SAE 100 R7
EN 3949, SAEJ517,
DIN 24951

COLOUR
FARBEN
COLORI
COULEUR

