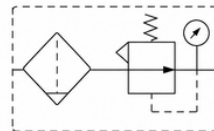


AW SERIES

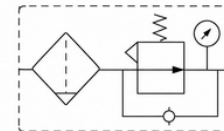


ORDER CODE

AW	20	00	K	- 01	D
SERIES	SPECIFICATION CODE	COMBINATION CODE	RELIEF TYPE	PORT SIZE	DRAIN MODE
	20	00: TRIPLE/SINGLE (COMBINATION)	NIL: STANDARD	M5: M5	NIL: MANUAL TYPE
	30	10: 2 PIECES	K: RELIEF TYPE	01: PT1/8	A: SEMI-AUTOMATIC TYPE
	40			02: PT1/4	AC: DIFFERENTIAL PRESSURE CANNULA DRAINAGE
	50			03: PT3/8	D: AUTOMATIC TYPE
				04: PT1/2	DA: ZERO PRESSURE AUTOMATIC DRAINAGE
				06: G3/4	
				10: G1	



STANDARD



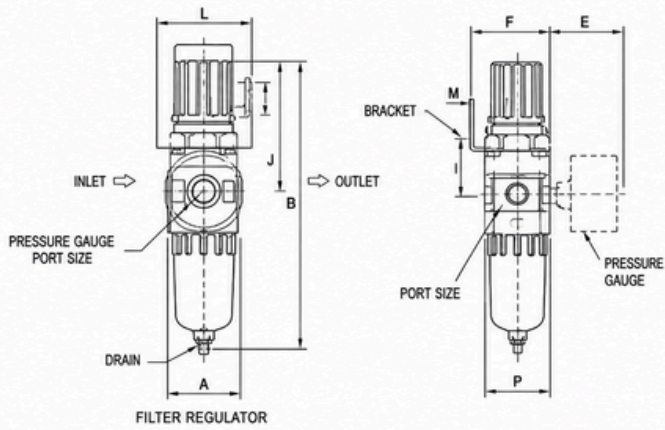
RELIEF TYPE



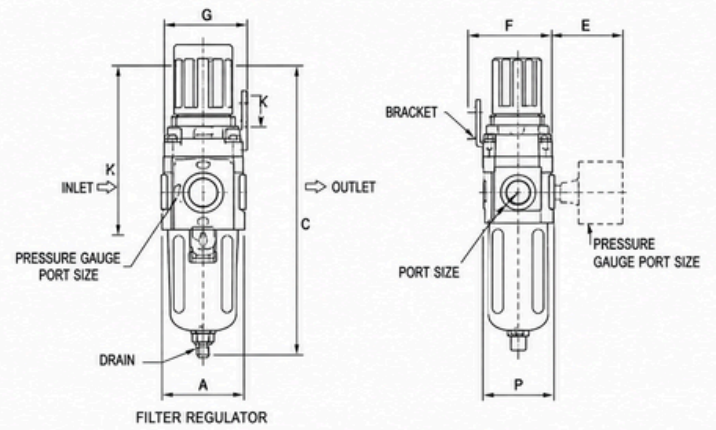
Model	AW1000-M5	AW2000-01	AW2000-02	AW3000-02	AW3000-03	AW4000-03	AW4000-04	AW4000-06	AW5000-06	AW5000-10
Port Size	M5*0.8	PT1/8	PT1/4	PT1/4	PT3/8	PT3/8	PT1/2	G3/4	G3/4	G1
Pressure Gauge Port Size	M5*0.8	PT1/8	PT1/8	PT1/8	PT1/8	PT1/4	PT1/4	PT1/4	PT1/4	PT1/4
Rated Flow(L/Min)	100	550	550	2000	2000	4000	4000	4500	5500	5500
Working Media	Compressed Air									
Proof Pressure	1.5Mpa									
Range of Regulation	0.05~0.7Mpa	0.05~0.85Mpa								
Ambient Temperature	5~60°C									
Filter Precision	40µm(Normal) or 5µm(Customized)									
Body material	Aluminum Alloy									
Bracket(one)	B120	B220	B320		B420					
Pressure Gauge	Y25-M5	Y40-01			Y50-02					
Material	Body Material	Aluminum Alloy								
	Cup Material	PC								
	Cup Cover	AW1000~AW2000: without AW3000~AW5000: with(Steel)								

DIMENSIONS

AW1000-2000



AW3000-5000



Model	Port Size	A	B	C	D	E	F	G	H	J	K	L	M	ΦN	P
AW1000	M5*0.8	25	109.5	47	25	-	25	25.5	25	4.5	6.5	40	2.0	21.5	25
AW2000	PT1/8,PT1/4	40	165	73.5	40	48.5	30.5	31	48	5.5	15.5	55	2.0	33.5	40
AW3000	PT1/4,PT3/8	54	209	88.5	53	52.5	41	40	46	6.5	8.0	53	2.5	42.5	55
AW4000	PT3/8,PT1/2	70	258.5	108.5	70	68	50.5	46.5	54	8.5	10.5	70.5	2.5	52.5	71.5
AW4000-06	G3/4	75.5	264	111	70	69	50.5	46	57	8.5	10.5	70.5	2.5	52.5	72.5
AW5000	G3/4,G1	90	342	117.5	90	74.5	50.5	47.5	62.5	8.5	10.5	70.5	2.5	52.5	84.5