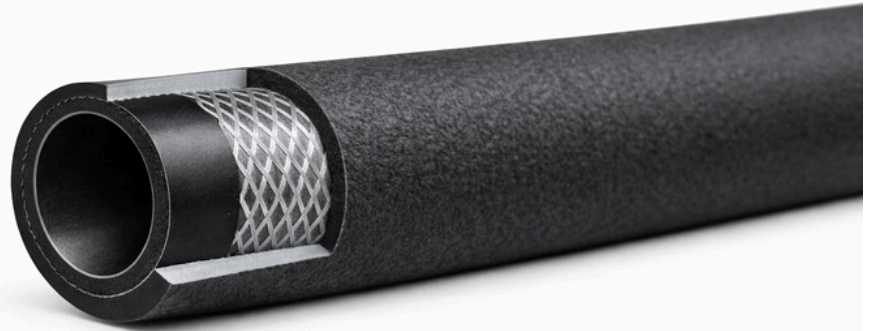


## MULTIPURPOSE BLACK HOSE



**TUBE** : Special synthetic rubber.  
**REINFORCEMENT** : High tensile synthetic textile.  
**COVER** : Abrasion, heat, ozone and weather resistant smooth special synthetic rubber.  
**APPLICATION** : To convey air, oil, cold / hot water.




**SEELE** : Spezieller synthetischer Gummi.  
**EINLAGE** : Hochzugfeste Textileinlage.  
**DECKE** : Abrieb-, ozon- und witterungsbeständiger synthetischer Gummi, glatt.  
**ANWENDUNG** : Zur Beförderung von Luft, Öl, Heiss- und Kaltwasser.









**SOTTOSTRATO** : Gomma speciale sintetica.  
**RINFORZO** : Inserzioni tessili ad alta tenacità.  
**COPERTURA** : Liscia in gomma speciale sintetica resistente all' abrasione, al calore, all'ozono ed agli agenti atmosferici.  
**IMPIEGO** : Per passaggio d'aria, olio, acqua calda / fredda.



**TUBE** : Caoutchouc synthétique spécial.  
**REINFORCEMENT** : Insertion textile haute ténacité.  
**REVÊTEMENT** : Caoutchouc synthétique spécial, lisse résistant à l'abrasion, à l'ozone, la chaleur et aux agents atmosphériques.  
**APPLICATION** : Pour transfert d'air, d'huile, d'eau froide / chaude.

 <b>MULTIPURPOSE RED HOSE</b>	
<b>TUBE:</b>	Black NBR blend compound with oil and non-aggressive chemical resistance.
<b>REINFORCEMENT:</b>	High tensile synthetic yarn for strength and pressure stability.
<b>COVER:</b>	Red EPDM blend compound resistant to oil, abrasion, and weather.
<b>APPLICATION:</b>	Softwall hose for compressed air, water, fuel, and oil delivery in general industrial applications.
<b>SURFACE:</b>	Smooth finish.
<b>TEMPERATURE:</b>	-20°C to +80°C

 ID		 OD	 WP		 BP		 W	 L
<i>inch</i>	<i>mm</i>	<i>mm</i>	<i>bar</i>	<i>psi</i>	<i>bar</i>	<i>psi</i>	<i>g/m</i>	<i>m</i>
1/4"	6	13	20	290	60	870	125	100
5/16"	8	15	20	290	60	870	150	100
3/8"	10	18	20	290	60	870	210	100
1/2"	13	22	20	290	60	870	295	100
5/8"	16	25	20	290	60	870	345	100
3/4"	19	29	20	290	60	870	445	100
1"	25	37	20	290	60	870	690	100



-40°C / +70°C  
-40°F / +158°F

MARKING / BESCHRIFTUNG / MARCATURA / MARQUAGE: **EMBOSSED OR INK JET**

**LONG MULTIPURPOSE HOSE (..”) W.P.. BAR (LOT)**

NORMS  
NORMEN  
NORME  
NORMES

ISO 1307

COLOUR  
FARBEN  
COLORI  
COULEUR

