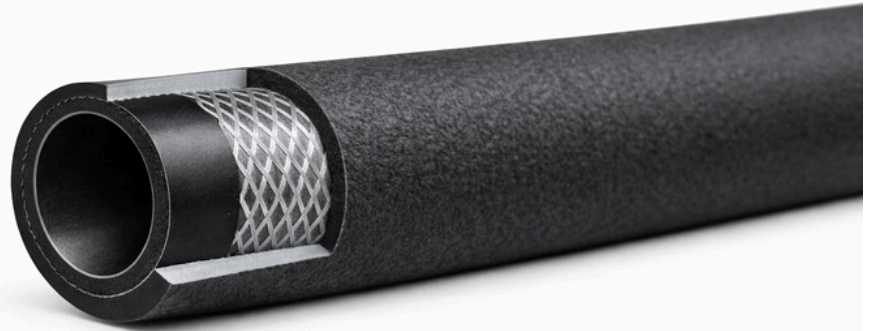


MULTIPURPOSE BLACK HOSE



TUBE : Special synthetic rubber.
REINFORCEMENT : High tensile synthetic textile.
COVER : Abrasion, heat, ozone and weather resistant smooth special synthetic rubber.
APPLICATION : To convey air, oil, cold / hot water.



SEELE : Spezieller synthetischer Gummi.
EINLAGE : Hochzugfeste Textileinlage.
DECKE : Abrieb-, ozon- und witterungsbeständiger synthetischer Gummi, glatt.
ANWENDUNG : Zur Beförderung von Luft, Öl, Heiss- und Kaltwasser.



SOTTOSTRATO : Gomma speciale sintetica.
RINFORZO : Inserzioni tessili ad alta tenacità.
COPERTURA : Liscia in gomma speciale sintetica resistente all'abrasione, al calore, all'ozono ed agli agenti atmosferici.
IMPIEGO : Per passaggio d'aria, olio, acqua calda / fredda.




TUBE : Caoutchouc synthétique spécial.
REINFORCEMENT : Insertion textile haute ténacité.
REVÊTEMENT : Caoutchouc synthétique spécial, lisse résistant à l'abrasion, à l'ozone, la chaleur et aux agents atmosphériques.
APPLICATION : Pour transfert d'air, d'huile, d'eau froide / chaude.



MULTIPURPOSE BLACK HOSE

TUBE:	Special synthetic rubber suitable for air, oil, and water applications.
REINFORCEMENT:	High tensile synthetic textile reinforcement for strength and pressure stability.
COVER:	Smooth special synthetic rubber cover resistant to abrasion, heat, ozone, and weather.
APPLICATION:	Designed to convey air, oil, cold water, and hot water
SURFACE:	Smooth finish.
TEMPERATURE:	-40°C / +70°C -40°F / +158°F

PART.NO	ID 		OD 	WP 		BP 		L 
	<i>inch</i>	<i>mm</i>	<i>mm</i>	<i>bar</i>	<i>psi</i>	<i>bar</i>	<i>psi</i>	<i>m</i>
11-HOS-BMP-20-006	1/4	6.4	14	20	300	60	900	100
11-HOS-BMP-20-008	5/16	8	15	20	300	60	900	100
11-HOS-BMP-20-010	3/8	9.5	17	20	300	60	900	100
11-HOS-BMP-20-013	1/2	12.7	21	20	300	60	900	100
11-HOS-BMP-20-016	5/8	16	25	20	300	60	900	100
11-HOS-BMP-20-019	3/4	19	29	20	300	60	900	100
11-HOS-BMP-20-022	7/8	22	32	20	300	60	900	100
11-HOS-BMP-20-025	1	25.4	36	20	300	60	900	100
01-HOS-BMP-20-028	1-1/8	28.5	42	20	300	60	900	100
01-HOS-BMP-20-032	1-1/4	31.8	45	20	300	60	900	100
01-HOS-BMP-20-038	1-1/2	38.1	52	20	300	60	900	100
01-HOS-BMP-20-050	2	50.8	66	20	300	60	900	100
01-HOS-BMP-20-065	2-1/2	63.5	81	20	300	60	900	100
01-HOS-BMP-20-075	3	76.2	94	20	300	60	900	100
01-HOS-BMP-20-100	4	101.6	120	20	300	60	900	100



-40°C / +70°C
-40°F / +158°F

MARKING / BESCHRIFTUNG / MARCATURA / MARQUAGE: **EMBOSSED OR INK JET**

LONG MULTIPURPOSE HOSE (..”) W.P.. BAR (LOT)

NORMS
 NORMEN
 NORME
 NORMES

ISO 1307

COLOUR
 FARBEN
 COLORI
 COULEUR

