

QUIZCURA

CURAVEVERSE

June 2026

Fourth Issue



Medical Luminaries

Frontline Medicine

QuizSphere

PYQs

Dr. P. Vijay Anand Reddy

Check Now



This Month in **CURAVVERSE**

4

Medical Luminaries

Honoring the minds shaping
future of medicine

5

QUIZSPHERE

QUIZCURA events

09

PYQs

NEET PG INI-CET

13

Frontline Medicine

Recent Medical Affairs



CURAVVERSE

Magazine

Editor-in-Chief
Shweta Sawant

Editorial Director
Priyanshu Dutta

Content Director
Preetam Pal

Social Media Head
Avishkar Lawate

Founder
Loknath Agasti

MEET OUR EDITORIAL CREW

Shweta Sawant

"Falling in love with medicine
one quiz at a time"



Priyanshu Dutta

"Elevating medical quizzing to a new
standard."



Preetam Pal

"I'm the one who keeps the code bug-
free and the transitions frame-perfect,
ensuring our quizzes look as sharp as
the people taking them."



Avishkar Lawate

"A techie soul in a doctor's coat"



strongly to
moment yo
ter at last
men

HEALING LIVES

Inspiring Generations

Dr. P. Vijay Anand Reddy is one of India's most renowned cancer specialists and a leading figure in the field of radiation oncology. With a career spanning more than three decades, he has dedicated his life to improving cancer care, advancing treatment technologies, and bringing hope to thousands of patients and their families. As the Director and Senior Consultant Radiation Oncologist at Apollo Cancer Centre, Hyderabad, Dr. Reddy has played a pivotal role in establishing the institution as one of the country's premier centers for cancer treatment. His expertise covers a wide range of cancers, including breast cancer, head and neck cancers, and ocular tumors, and he is widely respected for his patient-centered approach to care.

Throughout his career, Dr. Reddy has been committed not only to clinical excellence but also to innovation and research. He has introduced advanced radiation therapy techniques that enable more precise and effective treatment while minimizing side effects for patients. His contributions have helped improve survival rates and quality of life for countless individuals battling cancer. In addition, he has actively participated in national and international medical conferences, sharing knowledge and collaborating with experts from around the world to advance oncology practices.

Beyond his medical achievements, Dr. Reddy is a passionate advocate for cancer awareness and early detection. He regularly educates the public about cancer prevention, screening, and the importance of timely treatment. Through charitable initiatives and the CURE Foundation, he has worked tirelessly to ensure that financially disadvantaged patients have access to quality cancer care. His humanitarian efforts reflect his belief that every patient deserves compassionate treatment regardless of economic status.

Recognized with numerous awards and honors, including the prestigious Padma Shri, Dr. P. Vijay Anand Reddy stands as a symbol of excellence, compassion, and innovation in healthcare. His unwavering dedication to fighting cancer continues to inspire both medical professionals and patients, making him one of the most influential oncologists in India today.

His journey reminds us that medicine is not merely a profession but a lifelong commitment to service, empathy, and discovery. For future medical minds, his legacy serves as a powerful message: **“Let your knowledge heal, your compassion comfort, and your determination transform lives—because the future of healthcare begins with the passion you bring to it today.”**



QUIZSPHERE

QUIZCURA events



The mind is not a vessel to be filled,
but a fire to be kindled."

– Plutarch



QUIZCURA'S ORDER OF MERIT SERIES



200 Curated MCQs every week
(50 Questions for each academic year)



NEET-PG , INICET & PROF. (High-Yield Prep)
(Cross batch participation allowed.)



Syllabus for the entire year shall be given.
(Separate syllabus and questions for each academic year)



Monthly Rewards & Recognition
(Cash , Subscriptions or free entry to our monthly quizzes)



Performance Tracking & Leaderboard everyweek.



Certificate of Participation & Certificate of Appreciation

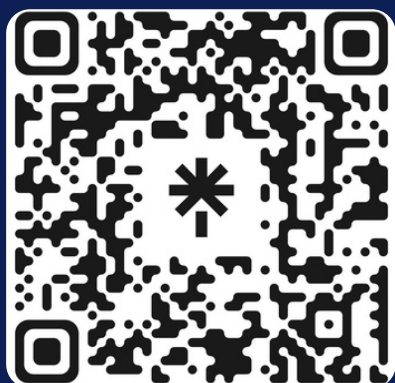


**JOIN YOUR QUIZCURA COLLEGE WHATSAPP GROUP
@ZERO FEES NOW !!! & ADD YOUR FRIENDS TOO .**

Begins from 15th March, 2026.

Link for the test will be shared in the Quizcure WhatsApp group of your college.

[JOIN NOW](#)



QUIZCURA

FOR ALL OF US

AN MSME (UDYAM) REGISTERED PLATFORM UNDER THE GOVERNMENT OF INDIA

presents

INI-CET / NEET-PG FOCUSED YEARLY QUIZ SUBSCRIPTION

ELIGIBILITY : MBBS BATCH 2021 TO 2025

ALL INDIA RANK & PERCENTILE WITH

3.12 LAKHS POOL

@ 34% OFF ON OUR MONTHLY QUIZ FEES

WHY SHOULD YOU PURCHASE?

• 12 PREMIUM QUIZZES • REAL EXAM ASSESSMENT • PAN INDIA COMPETITION • 34 % OFF

SOLO REGISTRATION: RS.1500/-

DUO REGISTRATION : RS.2300/-

[REGISTER NOW](#)

ABOUT US



9827788958



QUIZCURA



QUIZCURA

FOR ALL OF US

AN MSME (UDYAM) REGISTERED PLATFORM UNDER THE GOVERNMENT OF INDIA



presents

INI-CET / NEET-PG FOCUSED

FORENSIC MEDICINE & TOXICOLOGY

ELIGIBILITY : MBBS BATCH 2021 TO 2025

ALL INDIA RANK & PERCENTILE WITH

4500/- CASH PRIZES

WITH CERTIFICATE OF MERIT AND PARTICIPATION

28TH JUNE 2026

WHY SHOULD YOU PARTICIPATE ?

• PREMIUM QUIZ • REAL EXAM ASSESSMENT • PAN INDIA COMPETITION • KNOW WHERE YOU STAND

EARLY BIRD EXTENDED TILL 25TH JUNE

DUO : 199/- & SOLO : 149/-

REGISTRATION FEES AFTER JUNE 15TH

DUO: 249/- , SOLO : 199/-

REGISTER



9827788958



QUIZCURA

ABOUT US



PREVIOUS YEAR QUESTIONS

NEET PG

Which of the following statements correctly describes an ideal candidate for a renal graft transplant in a patient with diabetic nephropathy?

1. The survival rate of graft is 95% in the first year
2. The transplantation is cost effective after the second transplant year
3. The life expectancy is doubled in a diabetic patient with renal transplant
4. The treatment of chronic rejection has improved over the last 10 years

Which of the following is false about *Mycoplasma pneumoniae*?

1. Responds well to amoxiclav
2. Antibodies are useful in diagnosis
3. Chest X-ray shows bilateral infiltrates
4. Can be cultured in a cell-free medium

An elderly patient develops gradual cognitive decline along with bradykinesia, rigidity, and postural instability. Which pathology most likely explains this combination?

- A. Normal pressure hydrocephalus
- B. Vitamin B12 deficiency
- C. Lewy body deposition
- D. Hypothyroidism

Which of the following is NOT routinely included in the screening evaluation of a patient diagnosed with Turner syndrome?

- A. Cardiac evaluation by echocardiography
- B. Hearing assessment
- C. Blood glucose monitoring
- D. Antinuclear antibody testing

A defect in CD40-CD40L interaction in B lymphocytes leads to which immunological pattern?

- A. Reduced NK cell numbers
- B. Impaired cytotoxic T-cell function
- C. Elevated IgM with reduced IgG
- D. Neutrophil dysfunction

PREVIOUS YEAR QUESTIONS

NEET PG

A patient with type 2 diabetes has persistently elevated fasting glucose levels. Which dietary recommendation is most appropriate?

- A. Daily sodium intake above 6 g
- B. Fat contributing less than one-third of total calories
- C. Cholesterol intake below 50 mg/day
- D. Fiber intake exceeding 90 g/day

A chronic smoker undergoes spirometry. His FEV1/FVC ratio is markedly reduced and shows significant improvement after bronchodilator administration.

What is the most appropriate interpretation?

- A. Restrictive lung disease with reversibility
- B. Obstructive lung disease with reversibility
- C. Restrictive lung disease without reversibility
- D. Vascular pathology affecting lungs

Which of the following drugs is NOT considered a first-line disease-modifying agent in rheumatoid arthritis?

- A. Methotrexate
- B. Hydroxychloroquine
- C. Sulfasalazine
- D. Azathioprine

Regarding inflammatory bowel disease, which statement is correct?

- A. Crohn's disease involves only mucosa
- B. Ulcerative colitis shows transmural inflammation
- C. Skip lesions are characteristic of Crohn's disease
- D. Surgery cures Crohn's disease permanently

A patient with prolonged fever tests negative for malaria and dengue, but shows positivity for rK39 antigen. What is the most appropriate treatment?

- A. Dapsone
- B. Amphotericin B
- C. Hydroxychloroquine
- D. Griseofulvin



PREVIOUS YEAR QUESTIONS

INI-CET

A 40-year-old man presents with daytime sleepiness and impaired concentration and memory. On examination, his BMI is 41 kg/m², and his BP is 160/100 mm Hg. His awake ABG analysis is given: PaO₂ = 66 mm Hg, PaCO₂ = 50 mm Hg, and HCO₃ = 28 mEq/L. What is the most likely diagnosis?

1. Obstructive sleep apnea
2. Narcolepsy
3. Obesity hypo-ventilation syndrome
4. Central sleep apnea

An elderly patient was brought to the OPD with complaints of tremors, stoop posture and slow movements. His son also gives a history of forgetting day-to-day activities. What is the possible cause of this condition?

1. NPH
2. Hypothyroidism
3. Lewy body
4. Vitamin B12 deficiency

What is the antibody linked to the condition in which a 35-year-old woman experiences skin thickening, muscle weakness, pale peripheries upon cold exposure, increased creatine kinase with positive ANA, and biopsy revealing scl-70 positivity and perifascicular infiltration?

1. Anti PM scl antibody
2. Anti Jo1 antibody
3. Anti centromere antibody
4. Antinuclear antibody

All of the following are tests done for screening in patients with Turner's syndrome, except?

1. ANA
2. Audiometry
3. Echocardiography
4. Fasting blood glucose

What immunological abnormality is observed due to the absence of CD40 in B cells?

1. Total lack of NK cells
2. Lack of CD8-mediated cytotoxicity
3. Decreased IgG and increase in IgM
4. Inability of neutrophil to act against infections

PREVIOUS YEAR QUESTIONS

INI-CET

What recommendations would you give to a diabetic patient with a fasting blood glucose level of 160 mg/dL in terms of non-pharmacological management?

1. At least 80 mg of dietary fibre
2. <5 g sodium intake every day
3. <30% of the calories should come from fat
4. Cholesterol <100 mg

Which of the following is not a first-line drug for the management of a patient with rheumatoid arthritis?

1. Sulfasalazine
2. Hydroxychloroquine
3. Methotrexate
4. Azathioprine



Mark the correct statement regarding inflammatory bowel disease.

1. Skip lesions are present in Crohn's disease
2. Mucosal layers are involved in Crohn's, while transmural involvement seen in ulcerative colitis
3. Inflammatory bowel disease doesn't have a genetic predisposition
4. Crohn's is curable through surgical resection of the affected segment

A patient arrives at the hospital with symptoms of fever and chills. A fever profile test is conducted, which rules out malaria and dengue as the cause. However, the rK39 test comes back positive. What is the preferred treatment for this condition?

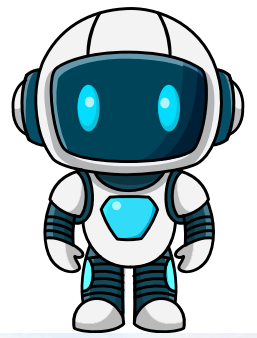
1. Amphotericin B
2. Griseofulvin
3. Dapsone
4. Hydroxychloroquine

Which of the following statements correctly describes an ideal candidate for a renal graft transplant in a patient with diabetic nephropathy?

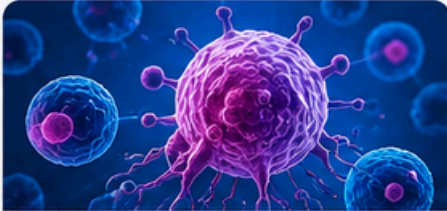
1. The survival rate of graft is 95% in the first year
2. The transplantation is cost effective after the second transplant year
3. The life expectancy is doubled in a diabetic patient with renal transplant
4. The treatment of chronic rejection has improved over the last 10 years

FRONTLINE

Medicine



Advances in Science. Hope for Humanity.



1 Breakthrough in Cancer Immunotherapy

Scientists report a promising boost in survival rates using next-generation immunotherapy combinations in advanced cancers.



2 RSV Vaccine Approved for Older Adults

Regulators approve the first RSV vaccine for older adults, offering new protection against a leading respiratory threat.



3 AI Tool Detects Early Signs of Alzheimer's

A new AI model identifies signs of Alzheimer's disease years earlier, opening doors for timely interventions.



4 CRISPR Therapy Shows Promise for Rare Disease

New CRISPR-based treatment delivers lasting results in patients with a rare genetic disorder.



5 Wearable Tech Gets Smarter About Heart Health

New sensors and AI algorithms in smartwatches can now detect irregular heart rhythms more accurately.



6 Dengue Vaccine Approved in Several Countries

A new dengue vaccine gets approval in multiple countries, a major step toward controlling the global burden of dengue.

OTHER KEY UPDATES



New Antibiotic Effective Against Drug-Resistant Bacteria

A new class of antibiotics shows success in clinical trials.



Universal Blood Test for Multiple Cancers

A simple blood test that can detect multiple cancers is closer to reality.



Mental Health Gets Global Attention

New WHO initiatives aim to improve mental health access worldwide.



Plant-Based Drug Shows Promise

A plant-derived compound shows potential in treating inflammatory diseases.

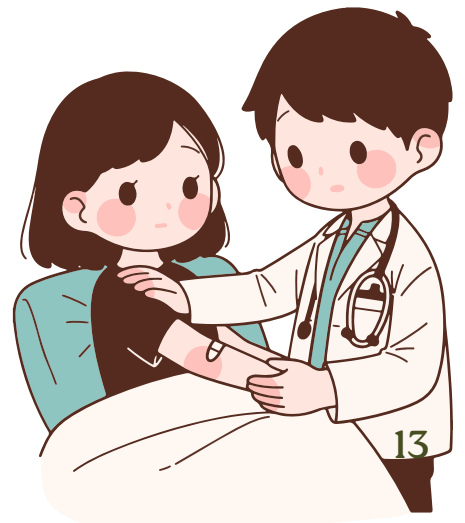


Global Health Collaboration Strengthens

Countries unite for better pandemic preparedness and equitable healthcare.

INNOVATING TODAY, HEALING TOMORROW.

Medical breakthroughs are shaping
a healthier future



SUBSCRIBE TO QuizCura



Never miss an issue!
Follow us on Instagram



QuizCura is India's largest monthly
Quizzing Platform connected with 300+
medical colleges in 20+ states.

CuraVerse is the monthly magazine
which is circulated among these colleges
through our network.

For collaboration with us,
WhatsApp: 9827788958

SUBMIT YOUR ARTICLES

for our Next Edition



www.quizcura.org

Catch the freshest features
Updated monthly
Read anytime, anywhere

[Submit here](#)

