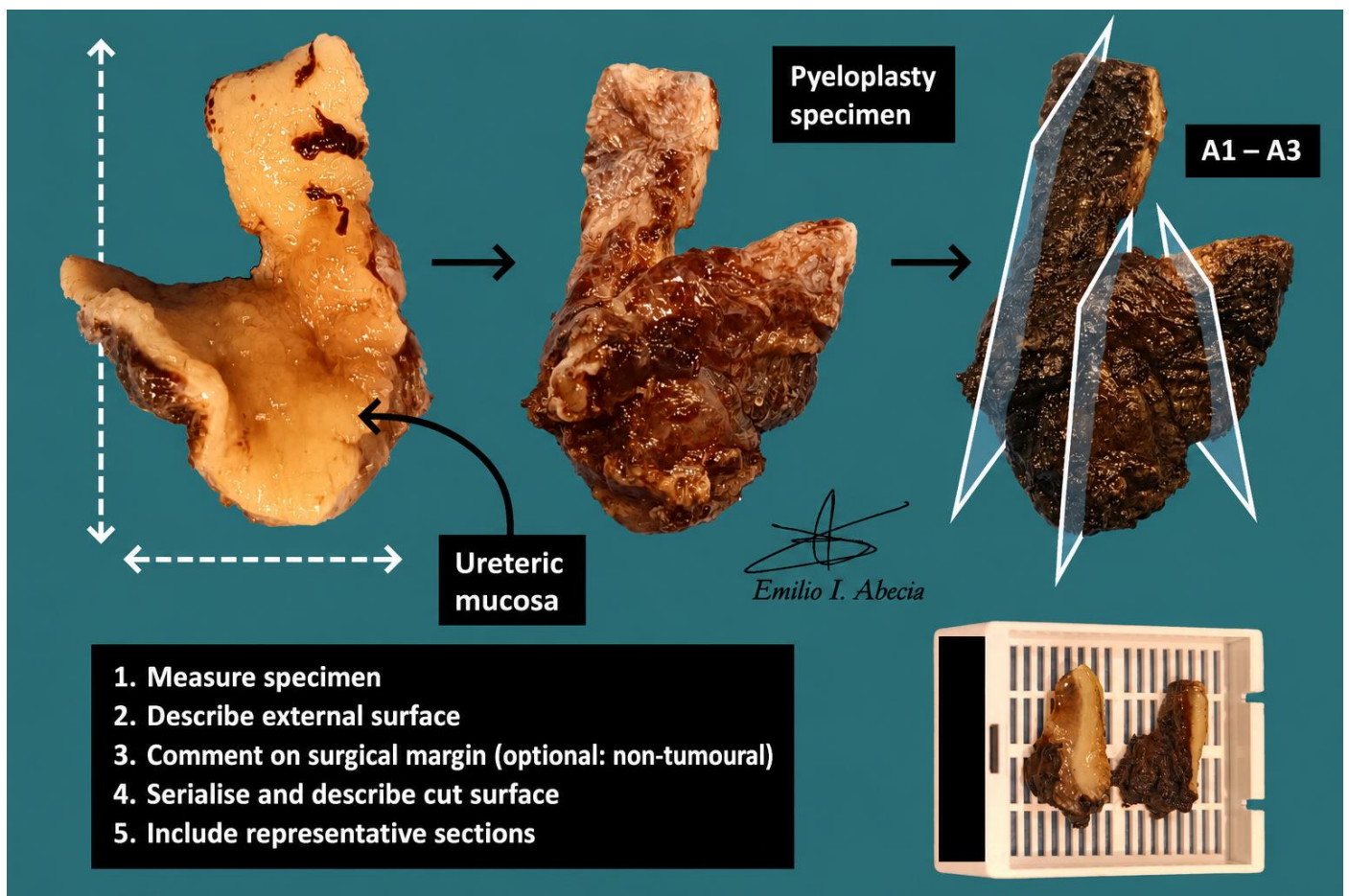


PYELOPLASTY

1. A specimen designated as X, consisting of a pyeloplasty specimen measuring XXX cm, is received.
2. Externally, no remarkable features are identified // the specimen shows a brownish / whitish / irregular surface, consistent with pelviureteric mucosa.
3. The surgical margin is inked (optional: non-neoplastic).
4. On serial sectioning, no remarkable features are identified // the specimen shows a thickness of XXX cm, with a brownish / whitish / homogeneous / etc. appearance.
5. The specimen is entirely submitted in X blocks.

POINTS TO CONSIDER

- Localised resections of the pelviureteric junction performed for obstructive pathology of the urinary tract. These procedures are therapeutic in intent and generally of limited histological significance, except for possible incidental findings.
- Measure and describe the external surface.
- Consider inking the surgical margin (optional: non-neoplastic).
- Serially section and describe the cut surface.
- Submit a couple of representative sections.



BIBLIOGRAPHY

- Cipriani N., Rose S. (2019). *Nephrectomy (Transplant Or Non-Neoplastic) (GU & Renal)*. Gross Pathology Manual (University Of Chicago). Recuperado el 13 de Mayo de 2024: <https://voices.uchicago.edu/grosspathology/gu-renal/nephrectomy-transplant-or-non-neoplastic/>
- Lemos, M. B., & Okoye, E. (2019). *Atlas of Surgical Pathology Grossing*. Springer Nature Switzerland AG. <https://link.springer.com/book/10.1007/978-3-030-20839-4>
- Susan C. Lester, French, C. A., & Curtis, S. G. (2010). *Manual of Surgical Pathology: Expert Consult* (ed. 3). Elsevier. <https://www.sciencedirect.com/book/9780323065160/manual-of-surgical-pathology>
- Shameem Shariff. (2019). *Fundamentals of Surgical Pathology* (ed.2). Jaypee Brothers Medical Publishers. <https://www.jaypeedigital.com/book/9789388958967>
- Westra, W. H., Ralph H. Hruban, Timothy H. Phelps, & Christina Iacson. (2003). *Surgical Pathology Dissection: An Illustrated Guide* (ed.2). Springer. <https://link.springer.com/book/10.1007/b97473>

DISCLAIMER

The image and text are provided for illustrative purposes only. The tissue sections submitted and the description provided will depend on the individual specimen characteristics, the clinical diagnostic suspicion, the experience of the dissector, and the institutional guidelines of the laboratory.

This document has been translated from the original Spanish version using AI-based tools. The text may contain typographical errors or inaccurate translations.

