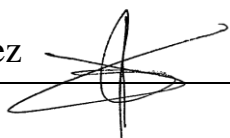
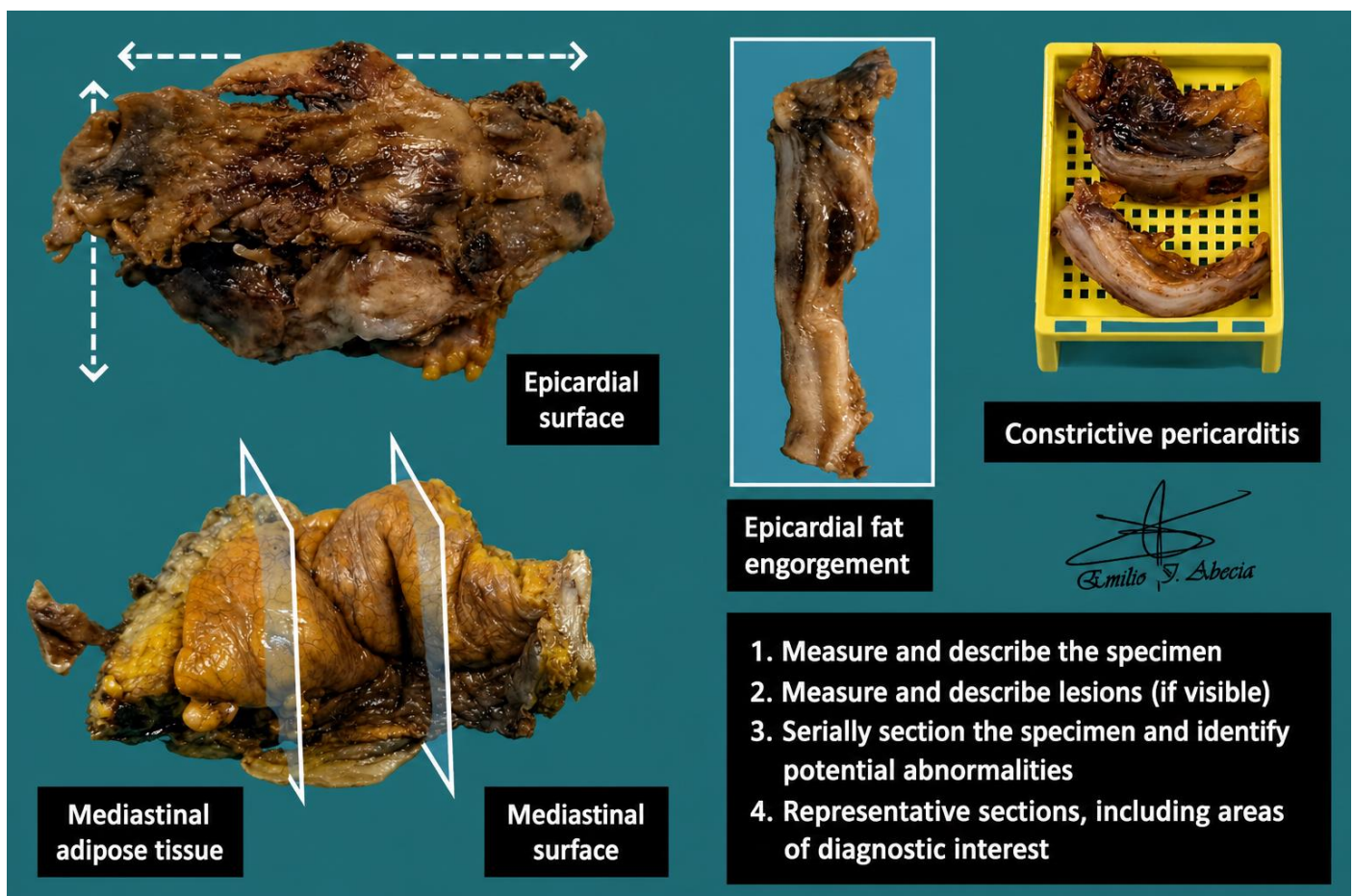


## PERICARDIECTOMY

1. Received labelled as X are one / several smooth / irregular fragments measuring XXX cm in aggregate.
2. Externally, no remarkable features are identified // the specimen shows a brownish / whitish / yellowish coloration, without grossly identifiable lesions // a lesion measuring XXX cm with X characteristics is identified.
3. On sectioning, no remarkable features are identified // a whitish / brownish fibrous-appearing wall is observed // indurated calcified areas are identified.
4. Representative sections are submitted in X blocks.

### POINTS TO CONSIDER

- Pericardial resections for non-neoplastic pathology, generally constrictive pericarditis related to autoimmune disease, infections, etc. Pericardiectomy for neoplastic disease is uncommon.
- Review the clinical history to determine the indication for the resection.
- Measure and describe the external surface of the specimen.
- Serially section and describe the cut surface.
- Submit a couple of representative sections.



## BIBLIOGRAPHY

- Cipriani N., Rose S. (2019). *Heart Biopsy (Thorax & Peritoneum)*. Gross Pathology Manual (University Of Chicago). Recuperado el 13 de Mayo de 2024: <https://voices.uchicago.edu/grosspathology/thoracic/heart-biopsy/>
- Lemos, M. B., & Okoye, E. (2019). *Atlas of Surgical Pathology Grossing*. Springer Nature Switzerland AG. <https://link.springer.com/book/10.1007/978-3-030-20839-4>
- Susan C. Lester, French, C. A., & Curtis, S. G. (2010). *Manual of Surgical Pathology: Expert Consult* (ed. 3). Elsevier. <https://www.sciencedirect.com/book/9780323065160/manual-of-surgical-pathology>
- Shameem Shariff. (2019). *Fundamentals of Surgical Pathology* (ed.2). Jaypee Brothers Medical Publishers. <https://www.jaypeedigital.com/book/9789388958967>
- Westra, W. H., Ralph H. Hruban, Timothy H. Phelps, & Christina Iacson. (2003). *Surgical Pathology Dissection: An Illustrated Guide* (ed.2). Springer. <https://link.springer.com/book/10.1007/b97473>

## DISCLAIMER

The image and text are provided for illustrative purposes only. The tissue sections submitted and the description provided will depend on the individual specimen characteristics, the clinical diagnostic suspicion, the experience of the dissector, and the institutional guidelines of the laboratory.

This document has been translated from the original Spanish version using AI-based tools. The text may contain typographical errors or inaccurate translations.

