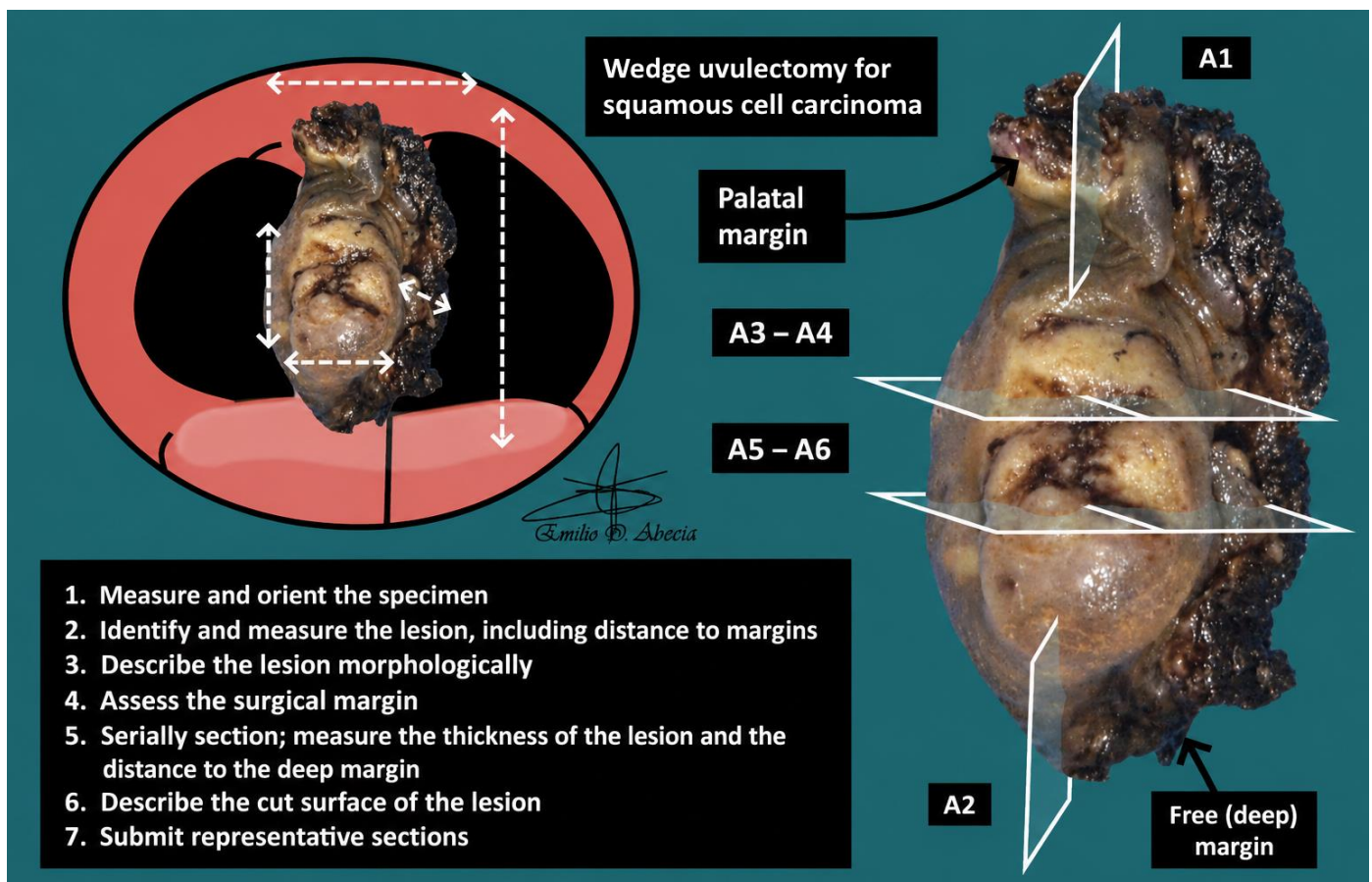


## UVULECTOMY

1. An uvulectomy specimen measuring XXX cm is received, oriented with X marking the X aspect // unoriented.
2. Externally, a lesion measuring XXX cm is identified, located X cm from the superior margin.
3. The lesion has a flat / ulcerated / exophytic morphology, with an indurated / soft-elastic consistency and a whitish / brownish coloration, etc.
4. The surgical margin is inked.
5. The lesion measures X cm in thickness and is located X cm from the deep margin.
6. The cut surface is homogeneous / heterogeneous, with well / poorly defined borders and a whitish / brownish coloration, etc.
7. Representative sections are submitted as follows:
  - A1: superior margin, en face.
  - A2: inferior margin (free edge), en face.
  - A3–A4: one complete section of the lesion.
  - A5–A6: second complete section of the lesion.

### TO CONSIDER

- Surgical resections of the uvula for neoplastic lesions (squamous cell carcinoma).
- Orient the specimen according to the surgical markers provided.
- Measure the specimen and the lesion, as well as the distance to the resection margins. Depending on the type of resection (partial or total), the specimen may include a deep and superior margin or only the latter.
- Ink the margins (the use of more than one colour or notches is recommended).
- Section the specimen along the short axis; measure lesion thickness and distance to margin.
- Submit representative sections:
  - Include the superior and deep margins. The remaining surface corresponds to the anatomical free edge.
  - Submit at least one section per centimetre of the greatest dimension of the lesion.



## BIBLIOGRAPHY

- Seethala R.R., Bishop J.A., Faquin W.C., Hui Huang S., Katabi N., Lydiatt W., O'Sullivan B., Patel S., Pettus J.R., Williams L. (September 2023). *Pharynx* (v4.3.0.0). College of American Pathologists (CAP). Recuperado el 13 de Mayo de 2024: [https://documents.cap.org/protocols/HN.Pharynx\\_4.3.0.0.REL\\_CAPCP.pdf?\\_gl=1\\*h2tafb\\*\\_ga\\*MTc4Nzk0MDczNC4xNzE0NDczNzAy\\*\\_ga\\_97ZFJSQQ0X\\*MTcxNDQ3MzcwMi4xLjEuMTcxNDQ3NDExMy4wLjAuMA](https://documents.cap.org/protocols/HN.Pharynx_4.3.0.0.REL_CAPCP.pdf?_gl=1*h2tafb*_ga*MTc4Nzk0MDczNC4xNzE0NDczNzAy*_ga_97ZFJSQQ0X*MTcxNDQ3MzcwMi4xLjEuMTcxNDQ3NDExMy4wLjAuMA)
- Cipriani N., Rose S. (2019). *Tongue / Mucosal Excision (Head & Neck)*. Gross Pathology Manual (University Of Chicago). Recuperado el 13 de Mayo de 2024: <https://voices.uchicago.edu/grosspathology/head-neck/tongue/>
- *Head & Neck Mucosal Biopsies (Head and Neck)*. Gross Manual. UCLA Health. Recuperado el 13 de Mayo de 2024: <https://www.uclahealth.org/sites/default/files/documents/HeadandNeckMucosalBiopsy060319.pdf>
- Cipriani N., Rose S. (2019). *Oral Biopsies (Head & Neck)*. Gross Pathology Manual (University Of Chicago). Recuperado el 13 de Mayo de 2024: <https://voices.uchicago.edu/grosspathology/head-neck/oral-biopsies/>
- WHO Classification of Tumours Editorial Board (2024). *Head and Neck Tumours* (5th ed., vol. 9). International Agency for Research on Cancer. <https://publications.iarc.fr/Book-And-Report-Series/Who-Classification-Of-Tumours/Head-And-Neck-Tumours-2024>
- Lemos, M. B., & Okoye, E. (2019). *Atlas of Surgical Pathology Grossing*. Springer Nature Switzerland AG. <https://link.springer.com/book/10.1007/978-3-030-20839-4>
- Susan C. Lester, French, C. A., & Curtis, S. G. (2010). *Manual of Surgical Pathology: Expert Consult* (ed. 3). Elsevier. <https://www.sciencedirect.com/book/9780323065160/manual-of-surgical-pathology>
- Shameem Shariff. (2019). *Fundamentals of Surgical Pathology* (ed.2). Jaypee Brothers Medical Publishers. <https://www.jaypeedigital.com/book/9789388958967>
- Westra, W. H., Ralph H. Hruban, Timothy H. Phelps, & Christina Iacson. (2003). *Surgical Pathology Dissection: An Illustrated Guide* (ed.2). Springer. <https://link.springer.com/book/10.1007/b97473>

## DISCLAIMER

The image and text are provided for illustrative purposes only. The tissue sections submitted and the description provided will depend on the individual specimen characteristics, the clinical diagnostic suspicion, the experience of the dissector, and the institutional guidelines of the laboratory.

This document has been translated from the original Spanish version using AI-based tools. The text may contain typographical errors or inaccurate translations.

